

Date / Time	LWD Run No.	Measured Depth (ft.)	Mud Type	Density (sg)	Viscosity (cp)	pH	Fluid Loss (cc)	Oil / Water	Source	Total Chlorides (ppm)	K+ (%)
08/Sep/2013 06:18	1	5480	Water Based - Fresh	8.3	26	0.0	0.0	0 / 99	Active Mud Pit	900	0.0

Mnemonics

Curve	Description	Units
GRAX	Gamma Ray Apparent, 0.5 ft. Avg.	API
ROPA	Rate of Penetration, 3.0 ft. Avg.	ft/hr
TCDX	Downhole Temperature	degF
WOBA	Surface Weight on Bit, 1.0 ft. Avg.	klbf

Equipment and Service Data

LWD Run No.	Tool	Serial Number	Measurement	Bit Offset (m.)	Max O.D. (in.)	Min I.D. (in.)
1	DIR	10508935	Directional	55.29	6.750	0.000
1	SRIG	12131373	Gamma	51.91	6.750	0.000
2	CS	10568748	-	73.95	5.070	1.750
2	BCPM	11634094	Telemetry	62.90	5.070	1.750
2	STAB	11781608	-	59.64	0.000	1.750
2	OTK	10510217	Directional	55.36	5.250	2.569
2	OTK	10570217	Resistivity	49.39	5.250	2.569
2	APR	10510217	Resistivity	49.39	0.000	0.000
2	OTK	10510217	Gamma	42.20	5.250	2.569
2	OTK	10510217	Pressure	44.83	5.250	2.569
2	CS	12072964	-	37.62	5.070	1.750

Service and Tool Mnemonics

Mnemonic	Name	Description
APR	Resistivity	Azimuthal propagation resistivity, azimuthal propagation resistivity image
BCPM	BCPM	Mud pulse telemetry and downhole tool power module
DIR	Directional	Wellbore directional survey
OTK	OnTrak	Propagation resistivity, propagation conductivity, gamma ray, directional, annular pressure, system memory and VSS
SRIG	Inclination and Gamma	Probe based gamma ray and inclination module
STAB	Stabilizer	Stabilizer assembly
CS	Closure Sub	BHA power ring isolator allowing insertion of inert sub into electrically powered BHA

Comments

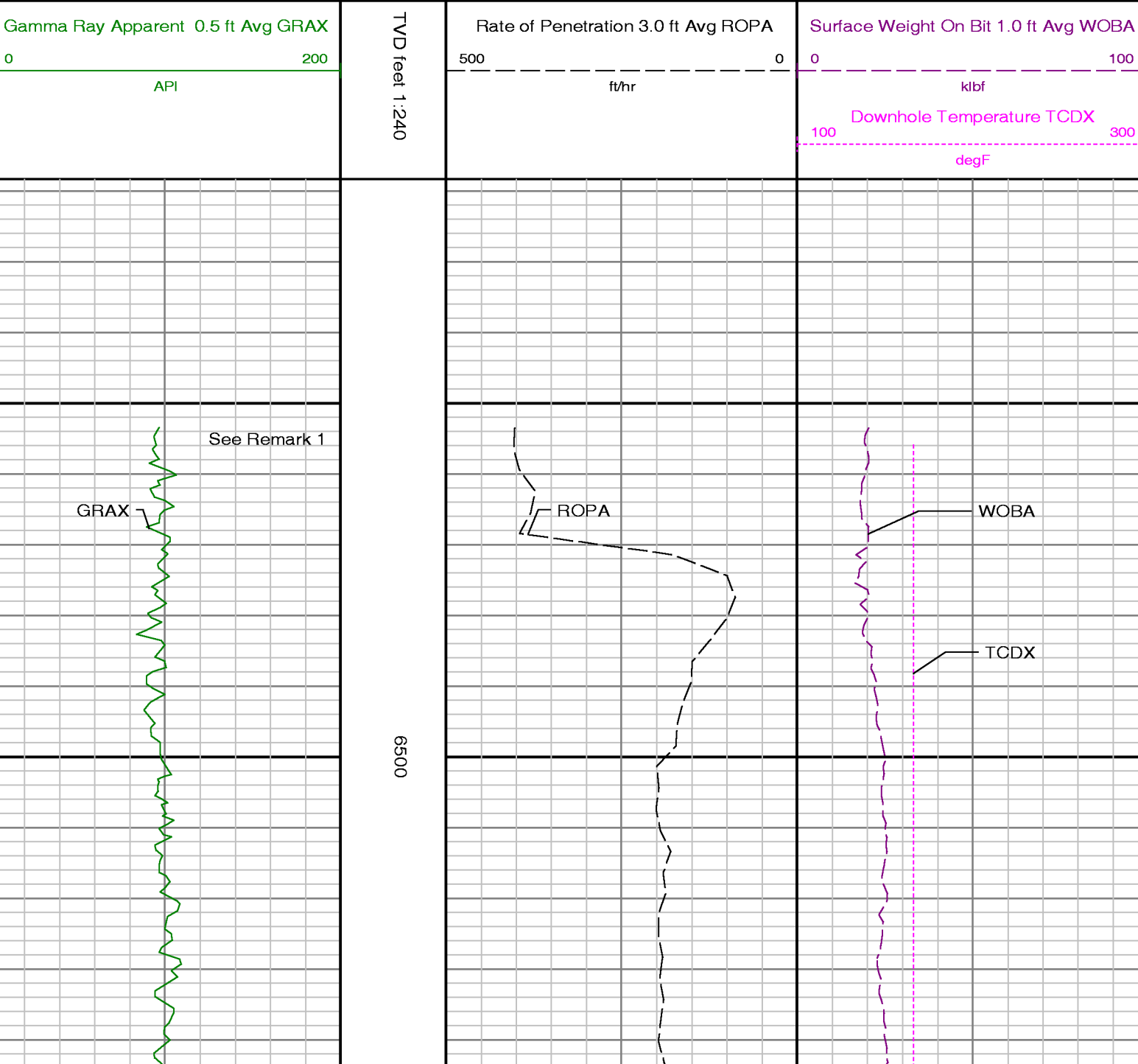
<p>1.) Depth measurements obtained from a depth control system not supplied or operated by Baker Hughes. Due to the lack of control by Baker Hughes logging engineers, depth calibrations and measurements could not be independently verified.</p> <p>2.) Baker Hughes run 1 utilized 6 3/4 inch NaviGamma services (Gamma Ray and Directional) behind an 8 3/4 inch bit and steerable assembly from 916 to 7500 feet MD (916 to 7088 feet TVD).</p> <p>3.) The interval from 916 to 6502 feet MD (916 to 6469 feet TVD) was not logged due to directional only services being provided through the straight-hole and nudge section for Baker Hughes run 1.</p>
--

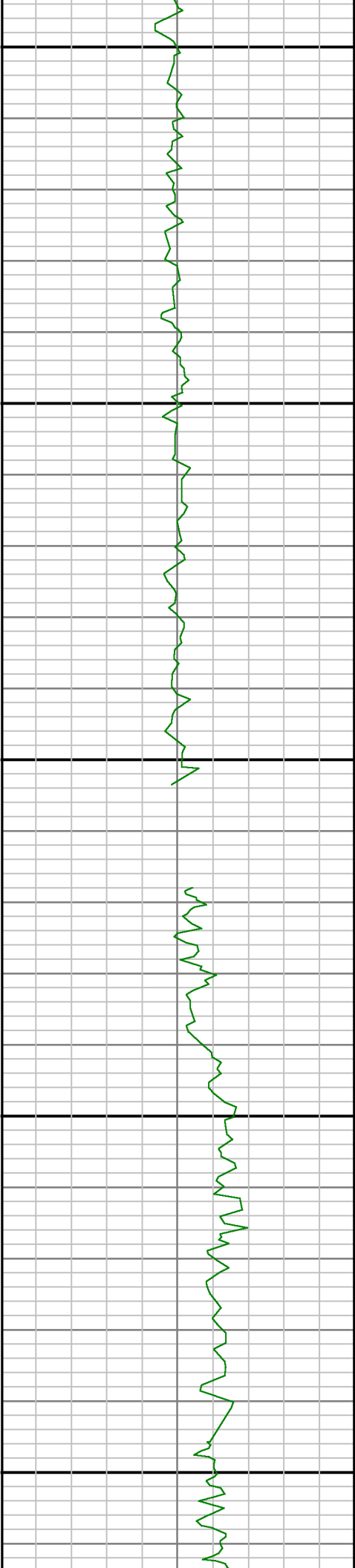
Remarks

Number	Measured Depth (ft.)	Hole Section (in.)	LWD Run No.	Remark
1	6502	8.750	1	Begin logging due to directional only services being provided thru vertical section.



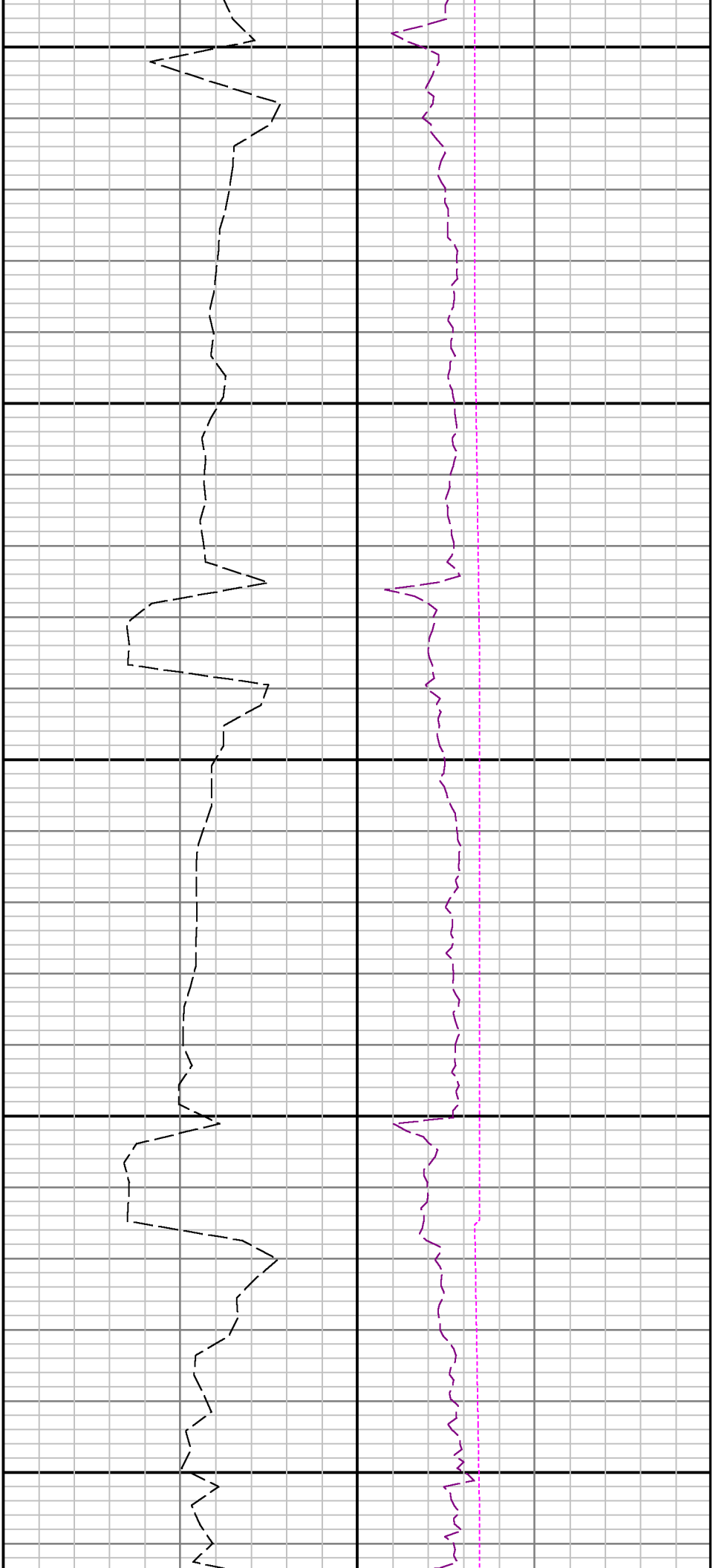
Company : Kerr McGee oil & Gas onshore LP
Well : Henrickson Federal 14N-18HZ
Interval : 6418.34 - 7600.00 feet
Created : 13/Sep/2013 5:22:00 AM

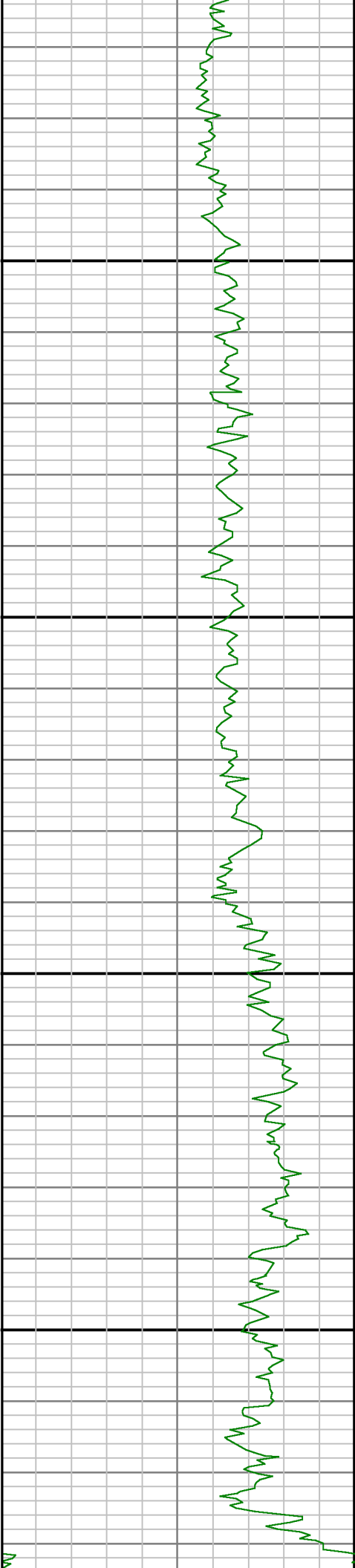




6600

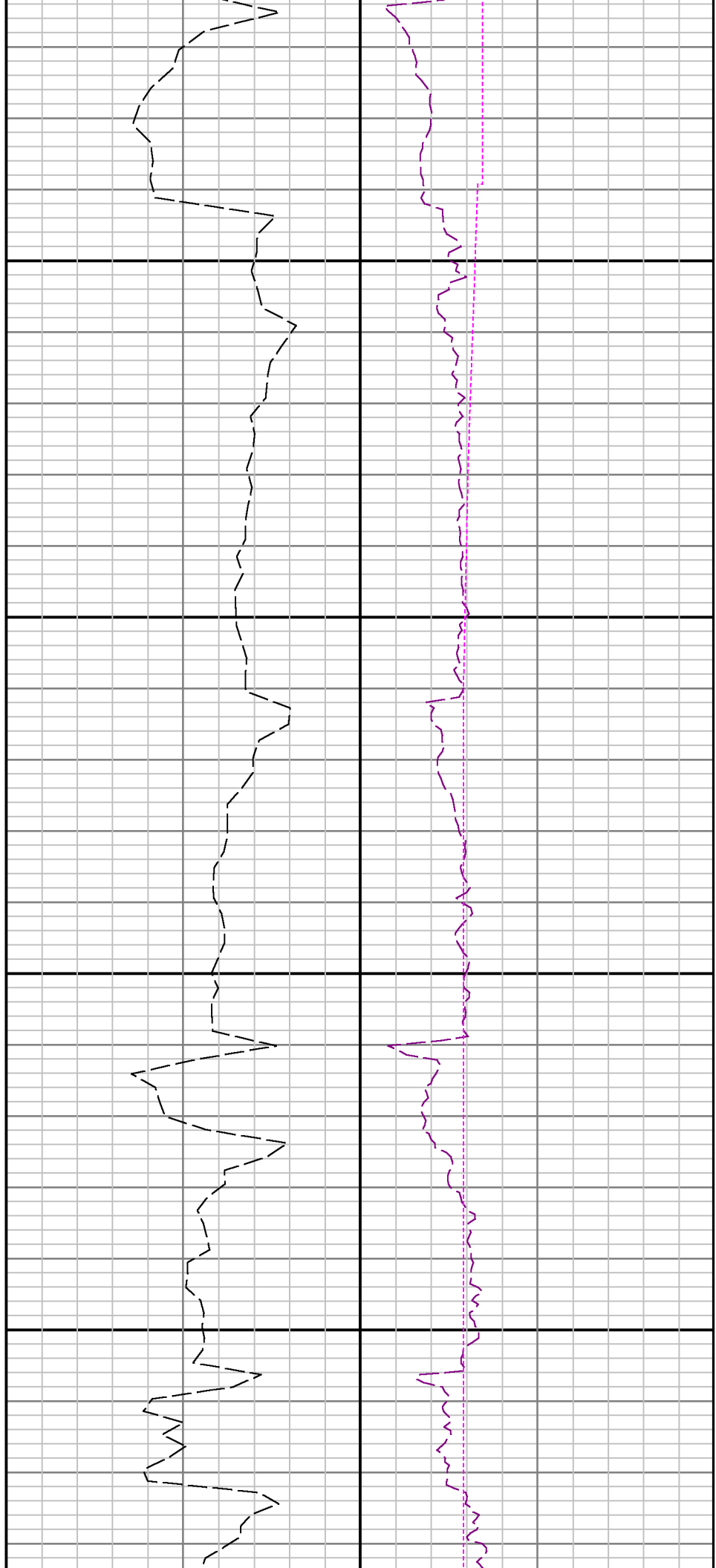
6700





0069

0089

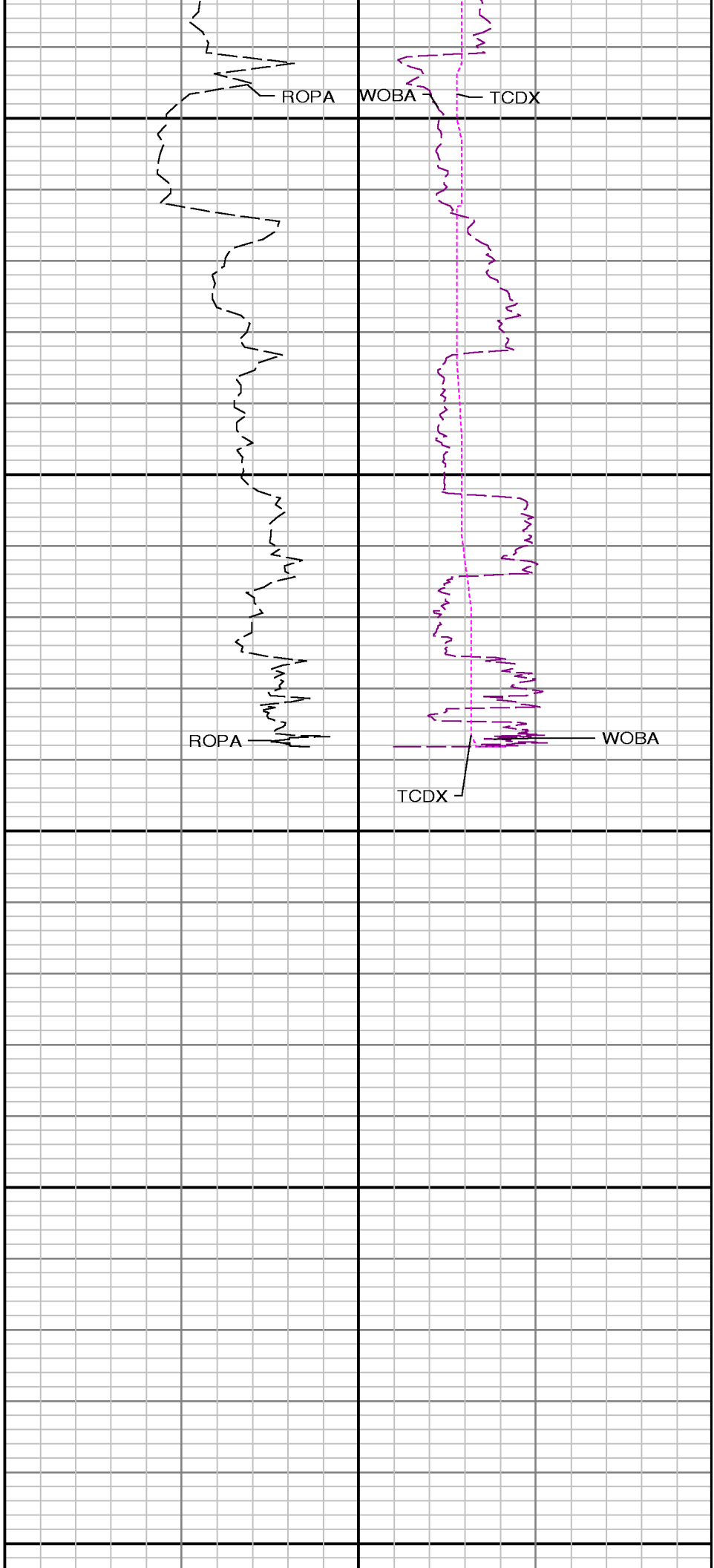




7000

7100

7200



Operator : Kerr McGee oil & Gas onshore LPField : Weld County (Kerr McGee)						API No : 051233767100						
Well :Henrickson Federal 14N-18HZRig : Xtreme 20						Job :5759252						
Wellbore : Henrickson Federal 14N-18HZ Orig Hole												
Well Origin												
Latitude		40.2369 deg					Longitude		-104.8224 deg			
North Reference		True					Drill Depth Zero		NULL			
Vertical Datum is		Ground Level					Vertical Datum to DDZ		13.00 ft			
Vertical Section North		0.00 ft					Vertical Section East		0.00 ft			
Vertical Section Azimuth		179.9800 deg					Vertical Section Depth		0.00ft			
Grid Convergence		0.0000 deg					Magnetic Declination		8.5300 deg			
Total Correction		8.5300 deg					TVD Calculation Method		Minimal Curvature			
D-Raw Calculation		Magecorr1					Local Magnetic Field		52664 nT			
Local Magnetic Dip Angle		66.9300 deg					Local Gravity Field		9.798 m/s^2			
Tie	MD ft	Incl deg	Azim deg	North ft	East ft	TVD ft	VS ft	Incr VS ft	Crs Len ft	DLS deg/100ft	Build deg/100ft	Turn deg/100ft
U	0.00	0.0000	0.0000	0.00	0.00	0.00	0.00	0.00				
	916.00	0.3300	101.7400	-0.66	1.09	916.00	0.66		916.00			
	1086.00	0.3316	265.1688	-0.80	1.08	1086.00	0.80	0.14	170.00	0.39	0.00	96.13
	1180.00	0.3173	287.8677	-0.74	0.56	1180.00	0.74	0.66	94.00	0.14	-0.02	24.15
	1274.00	1.3168	9.6927	0.40	0.49	1273.99	-0.40	1.81	94.00	1.39	1.06	87.05
	1368.00	3.0955	14.4073	3.92	1.31	1367.92	-3.92	5.43	94.00	1.90	1.89	5.02
	1462.00	5.0071	10.4061	10.42	2.68	1461.68	-10.42	12.06	94.00	2.05	2.03	-4.26
	1557.00	4.8232	3.3677	18.48	3.66	1556.33	-18.48	20.19	95.00	0.66	-0.19	-7.41
	1647.00	4.5159	0.6900	25.80	3.93	1646.03	-25.80	27.51	90.00	0.42	-0.34	-2.98
	1739.00	4.3541	357.9044	32.91	3.84	1737.75	-32.91	34.62	92.00	0.29	-0.18	-3.03
	1830.00	4.1414	351.0975	39.61	3.21	1828.50	-39.61	41.35	91.00	0.60	-0.23	-7.48
	1922.00	3.4109	2.8119	45.63	2.83	1920.31	-45.63	47.38	92.00	1.15	-0.79	12.73
	2013.00	3.1129	28.4569	50.50	4.14	2011.16	-50.50	52.43	91.00	1.62	-0.33	28.18
	2104.00	3.1731	29.5978	54.87	6.56	2102.03	-54.86	57.42	91.00	0.10	0.07	1.25
	2196.00	2.9016	24.3147	59.20	8.78	2193.90	-59.20	62.29	92.00	0.42	-0.30	-5.74
	2288.00	3.7665	22.5923	64.11	10.90	2285.74	-64.11	67.64	92.00	0.95	0.94	-1.87
	2379.00	4.1355	27.4284	69.79	13.56	2376.52	-69.78	73.90	91.00	0.55	0.41	5.31
	2471.00	3.5555	25.1136	75.31	16.30	2468.32	-75.31	80.07	92.00	0.65	-0.63	-2.52
	2563.00	4.4290	20.8871	81.22	18.77	2560.09	-81.21	86.47	92.00	1.00	0.95	-4.59
	2655.00	4.6600	18.9000	88.07	21.25	2651.80	-88.06	93.76	92.00	0.30	0.25	-2.16
	2747.00	4.7000	17.8800	95.19	23.62	2743.50	-95.18	101.27	92.00	0.10	0.04	-1.11
	2838.00	4.6000	16.8000	102.23	25.82	2834.20	-102.23	108.64	91.00	0.15	-0.11	-1.19
	2930.00	4.5000	16.1800	109.23	27.89	2925.91	-109.22	115.94	92.00	0.12	-0.11	-0.67
	3020.00	4.2400	13.0500	115.86	29.62	3015.65	-115.85	122.80	90.00	0.39	-0.29	-3.48
	3113.00	4.9700	5.4000	123.22	30.78	3108.35	-123.21	130.25	93.00	1.02	0.78	-8.23
	3204.00	5.9800	9.4500	131.82	31.93	3198.93	-131.81	138.92	91.00	1.19	1.11	4.45
	3296.00	6.9700	7.3100	142.09	33.43	3290.34	-142.08	149.30	92.00	1.11	1.08	-2.33
	3381.00	8.7400	9.6600	153.57	35.17	3374.54	-153.56	160.91	85.00	2.12	2.08	2.76
	3466.00	10.3200	9.4000	167.45	37.49	3458.36	-167.44	174.98	85.00	1.86	1.86	-0.31
	3551.00	11.2300	9.2200	183.13	40.06	3541.87	-183.12	190.87	85.00	1.07	1.07	-0.21
	3636.00	11.3800	8.5300	199.59	42.63	3625.22	-199.58	207.54	85.00	0.24	0.18	-0.81
	3721.00	11.6600	10.8500	216.32	45.49	3708.50	-216.31	224.51	85.00	0.64	0.33	2.73
	3806.00	12.6000	12.7100	233.80	49.15	3791.61	-233.79	242.37	85.00	1.20	1.11	2.19
	3891.00	14.3700	12.1400	253.16	53.41	3874.26	-253.14	262.19	85.00	2.09	2.08	-0.67
	3977.00	14.2000	11.7600	273.92	57.80	3957.60	-273.90	283.41	86.00	0.23	-0.20	-0.44
	4062.00	13.5900	11.5400	293.91	61.93	4040.11	-293.89	303.82	85.00	0.72	-0.72	-0.26
	4147.00	12.5100	11.4400	312.72	65.75	4122.92	-312.70	323.01	85.00	1.27	-1.27	-0.12
	4232.00	10.8300	10.6700	329.59	69.05	4206.16	-329.57	340.20	85.00	1.98	-1.98	-0.91
	4317.00	9.8500	8.4300	344.63	71.60	4289.77	-344.61	355.46	85.00	1.25	-1.15	-2.64
	4402.00	9.3800	6.0700	358.71	73.40	4373.58	-358.69	369.65	85.00	0.72	-0.55	-2.78
	4487.00	8.5500	5.1200	371.89	74.69	4457.54	-371.87	382.90	85.00	0.99	-0.98	-1.12
	4573.00	8.4900	5.5400	384.58	75.88	4542.59	-384.55	395.64	86.00	0.10	-0.07	0.49
	4658.00	7.4800	9.4900	396.28	77.40	4626.77	-396.26	407.44	85.00	1.35	-1.19	4.65
	4743.00	6.2400	12.2400	406.25	79.29	4711.16	-406.23	417.59	85.00	1.51	-1.46	3.24
	4828.00	4.5200	17.7500	413.96	81.29	4795.78	-413.93	425.55	85.00	2.11	-2.02	6.48

	4913.00	2.8400	14.8600	419.19	82.85	4880.60	-419.16	431.00	85.00	1.99	-1.98	-3.40
	4998.00	1.0200	10.3300	421.96	83.52	4965.55	-421.94	433.86	85.00	2.15	-2.14	-5.33
	5083.00	0.4900	229.7200	422.47	83.38	5050.55	-422.45	434.39	85.00	1.69	-0.62	-165.42
	5168.00	0.8500	246.1900	421.98	82.53	5135.54	-421.96	435.38	85.00	0.48	0.42	19.38
	5253.00	0.9100	266.5700	421.69	81.28	5220.53	-421.66	436.66	85.00	0.37	0.07	23.98
Tie	MD ft	Incl deg	Azim deg	North ft	East ft	TVD ft	VS ft	Incr VS ft	Crs Len ft	DLS deg/100ft	Build deg/100ft	Turn deg/100ft
	5338.00	1.0300	263.7200	421.57	79.85	5305.52	-421.54	438.10	85.00	0.15	0.14	-3.35
	5423.00	0.4300	351.7500	421.80	79.04	5390.51	-421.77	438.94	85.00	1.30	-0.71	103.56
	5508.00	0.5200	348.9100	422.49	78.92	5475.51	-422.46	439.64	85.00	0.11	0.11	-3.34
	5593.00	0.5800	321.0900	423.21	78.58	5560.51	-423.18	440.43	85.00	0.32	0.07	-32.73
	5679.00	0.8500	50.1100	423.95	78.79	5646.50	-423.93	441.21	86.00	1.19	0.31	103.51
	5764.00	0.8100	36.6600	424.84	79.63	5731.49	-424.81	442.44	85.00	0.23	-0.05	-15.82
	5849.00	0.6400	32.8900	425.72	80.25	5816.49	-425.69	443.51	85.00	0.21	-0.20	-4.44
	5935.00	0.0900	58.9500	426.16	80.57	5902.48	-426.13	444.05	86.00	0.65	-0.64	30.30
	6020.00	0.1200	200.1400	426.11	80.60	5987.48	-426.08	444.11	85.00	0.23	0.04	166.11
	6105.00	0.4000	218.9100	425.79	80.38	6072.48	-425.77	444.49	85.00	0.34	0.33	22.08
	6190.00	0.3500	214.4900	425.35	80.05	6157.48	-425.32	445.05	85.00	0.07	-0.06	-5.20
	6275.00	0.5200	223.4100	424.86	79.63	6242.48	-424.83	445.69	85.00	0.21	0.20	10.49
	6361.00	0.3000	243.4400	424.47	79.16	6328.48	-424.44	446.30	86.00	0.30	-0.26	23.29
	6446.00	0.3000	244.8400	424.28	78.76	6413.48	-424.25	446.74	85.00	0.01	0.00	1.65
	6531.00	3.2100	180.1200	421.80	78.56	6498.43	-421.77	449.23	85.00	3.64	3.42	-76.14
	6574.00	8.0900	180.2900	417.57	78.54	6541.21	-417.54	453.46	43.00	11.35	11.35	0.40
	6616.00	11.8900	181.3500	410.29	78.42	6582.56	-410.26	460.74	42.00	9.06	9.05	2.52
	6659.00	16.3300	183.0100	399.82	78.00	6624.26	-399.79	471.22	43.00	10.37	10.33	3.86
	6701.00	20.2300	181.2700	386.65	77.53	6664.13	-386.63	484.39	42.00	9.38	9.29	-4.14
	6744.00	24.4300	181.1500	370.32	77.19	6703.90	-370.30	500.72	43.00	9.77	9.77	-0.28
	6786.00	28.1700	179.3900	351.72	77.12	6741.54	-351.69	519.33	42.00	9.10	8.90	-4.19
	6829.00	30.0000	178.5300	330.82	77.50	6779.12	-330.80	540.23	43.00	4.37	4.26	-2.00
	6872.00	32.1700	180.3600	308.63	77.70	6815.94	-308.60	562.43	43.00	5.50	5.05	4.26
	6915.00	37.9600	180.3000	283.93	77.56	6851.12	-283.91	587.12	43.00	13.47	13.47	-0.14
	6957.00	43.3900	180.5800	256.57	77.35	6882.96	-256.54	614.48	42.00	12.94	12.93	0.67
	7000.00	48.5600	180.4900	225.66	77.06	6912.84	-225.64	645.39	43.00	12.02	12.02	-0.21
	7042.00	53.0000	180.4200	193.13	76.80	6939.39	-193.11	677.92	42.00	10.57	10.57	-0.17
	7085.00	56.4600	180.6200	158.03	76.48	6964.21	-158.01	713.02	43.00	8.06	8.05	0.47
	7127.00	60.8200	180.4000	122.18	76.17	6986.07	-122.15	748.88	42.00	10.39	10.38	-0.52
	7170.00	62.3600	180.6400	84.36	75.82	7006.52	-84.34	786.70	43.00	3.61	3.58	0.56
	7212.00	67.4100	180.4500	46.35	75.46	7024.34	-46.32	824.72	42.00	12.03	12.02	-0.45
	7255.00	70.0800	179.6100	6.28	75.44	7039.93	-6.25	864.79	43.00	6.47	6.21	-1.95
	7297.00	71.7600	179.3400	-33.41	75.81	7053.66	33.44	904.48	42.00	4.05	4.00	-0.64
	7340.00	75.8700	179.4000	-74.70	76.26	7065.64	74.72	945.77	43.00	9.56	9.56	0.14
	7382.00	77.4800	179.0100	-115.56	76.83	7075.32	115.59	986.63	42.00	3.94	3.83	-0.93
	7425.00	82.5600	178.7800	-157.89	77.65	7082.77	157.92	1028.97	43.00	11.83	11.81	-0.53
	7446.00	84.0100	178.8800	-178.74	78.07	7085.23	178.77	1049.82	21.00	6.92	6.90	0.48
	7508.00	90.4900	181.2300	-240.63	78.01	7088.20	240.66	1111.72	62.00	11.12	10.45	3.79
	7599.00	91.2500	181.5900	-331.59	75.77	7086.82	331.62	1202.70	91.00	0.92	0.84	0.40
	7691.00	90.5200	180.6800	-423.56	73.95	7085.40	423.59	1294.69	92.00	1.27	-0.79	-0.99
	7782.00	89.5300	178.9600	-514.56	74.23	7085.36	514.58	1385.69	91.00	2.18	-1.09	-1.89
	7874.00	89.7800	178.3900	-606.53	76.36	7085.91	606.56	1477.69	92.00	0.68	0.27	-0.62
	7965.00	89.6600	178.9300	-697.50	78.49	7086.36	697.53	1568.68	91.00	0.61	-0.13	0.59
	8057.00	89.7800	178.7200	-789.48	80.38	7086.81	789.51	1660.68	92.00	0.26	0.13	-0.23
	8148.00	90.0300	179.3600	-880.47	81.90	7086.96	880.50	1751.68	91.00	0.76	0.27	0.70
	8240.00	90.1500	178.3500	-972.45	83.74	7086.81	972.48	1843.68	92.00	1.11	0.13	-1.10
	8332.00	90.3600	177.2100	-1064.38	87.30	7086.40	1064.41	1935.68	92.00	1.26	0.23	-1.24
	8424.00	88.3800	179.4200	-1156.32	90.01	7087.42	1156.35	2027.66	92.00	3.23	-2.15	2.40
	8516.00	88.4300	179.8600	-1248.29	90.59	7089.98	1248.32	2119.63	92.00	0.48	0.05	0.48
	8607.00	88.4200	179.8900	-1339.25	90.78	7092.48	1339.28	2210.59	91.00	0.03	-0.01	0.03
Tie	MD ft	Incl deg	Azim deg	North ft	East ft	TVD ft	VS ft	Incr VS ft	Crs Len ft	DLS deg/100ft	Build deg/100ft	Turn deg/100ft
	8699.00	88.7900	180.4900	-1431.22	90.48	7094.72	1431.25	2302.56	92.00	0.77	0.40	0.65
	8790.00	88.0300	180.1400	-1522.19	89.98	7097.24	1522.22	2393.53	91.00	0.92	-0.84	-0.38
	8882.00	89.8100	180.5000	-1614.16	89.47	7098.98	1614.20	2485.51	92.00	1.97	1.93	0.39

	8974.00	90.4600	179.9800	-1706.16	89.08	7098.76	1706.19	2577.51	92.00	0.90	0.71	-0.57
	9065.00	90.0300	179.1500	-1797.16	89.77	7098.37	1797.19	2668.51	91.00	1.03	-0.47	-0.91
	9156.00	89.5600	179.2000	-1888.15	91.08	7098.70	1888.18	2759.50	91.00	0.52	-0.52	0.05
	9248.00	89.4100	179.9000	-1980.14	91.80	7099.52	1980.17	2851.50	92.00	0.78	-0.16	0.76
	9339.00	90.5500	179.7400	-2071.14	92.09	7099.56	2071.17	2942.50	91.00	1.27	1.25	-0.18
	9431.00	92.7700	180.9200	-2163.09	91.56	7096.89	2163.12	3034.45	92.00	2.73	2.41	1.28
	9523.00	91.9700	179.8300	-2255.01	90.96	7093.09	2255.04	3126.37	92.00	1.47	-0.87	-1.18
	9614.00	92.5800	180.8600	-2345.93	90.41	7089.47	2345.96	3217.30	91.00	1.31	0.67	1.13
	9706.00	91.6300	179.4700	-2437.87	90.15	7086.09	2437.90	3309.23	92.00	1.83	-1.03	-1.51
	9797.00	90.5800	180.5900	-2528.85	90.10	7084.34	2528.88	3400.21	91.00	1.69	-1.15	1.23
	9888.00	89.9000	179.2800	-2619.84	90.20	7083.96	2619.88	3491.21	91.00	1.62	-0.75	-1.44
	9974.00	90.5500	179.4700	-2705.84	91.14	7083.62	2705.87	3577.21	86.00	0.79	0.76	0.22
	10059.00	89.0400	178.5700	-2790.82	92.59	7083.92	2790.85	3662.20	85.00	2.07	-1.78	-1.06
	10144.00	89.8700	179.0800	-2875.80	94.34	7084.73	2875.83	3747.20	85.00	1.15	0.98	0.60
	10229.00	90.4600	179.6300	-2960.79	95.29	7084.49	2960.83	3832.20	85.00	0.95	0.69	0.65
	10314.00	90.7400	178.9900	-3045.78	96.32	7083.60	3045.81	3917.19	85.00	0.82	0.33	-0.75
	10399.00	90.1200	179.8900	-3130.77	97.15	7082.96	3130.81	4002.19	85.00	1.29	-0.73	1.06
	10484.00	89.3500	180.1900	-3215.77	97.09	7083.35	3215.81	4087.19	85.00	0.97	-0.91	0.35
	10570.00	89.0700	180.2700	-3301.76	96.74	7084.54	3301.80	4173.18	86.00	0.34	-0.33	0.09
	10655.00	88.9500	180.2400	-3386.75	96.37	7086.01	3386.78	4258.17	85.00	0.15	-0.14	-0.04
	10740.00	88.9200	180.5500	-3471.73	95.78	7087.59	3471.77	4343.15	85.00	0.37	-0.04	0.36
	10825.00	88.7300	180.5800	-3556.71	94.94	7089.33	3556.74	4428.13	85.00	0.23	-0.22	0.04
	10910.00	88.7000	180.3600	-3641.69	94.25	7091.24	3641.72	4513.11	85.00	0.26	-0.04	-0.26
	10995.00	89.6600	181.0500	-3726.67	93.20	7092.45	3726.70	4598.10	85.00	1.39	1.13	0.81
	11080.00	89.5000	180.6400	-3811.66	91.95	7093.08	3811.69	4683.10	85.00	0.52	-0.19	-0.48
	11166.00	89.7500	181.2100	-3897.64	90.56	7093.64	3897.68	4769.10	86.00	0.72	0.29	0.66
	11251.00	89.5300	180.5600	-3982.63	89.24	7094.17	3982.66	4854.10	85.00	0.81	-0.26	-0.76
	11336.00	91.2900	181.3400	-4067.61	87.84	7093.56	4067.64	4939.09	85.00	2.26	2.07	0.92
	11421.00	91.1100	180.6000	-4152.58	86.40	7091.78	4152.61	5024.07	85.00	0.90	-0.21	-0.87
	11506.00	91.7800	182.0300	-4237.53	84.45	7089.64	4237.56	5109.04	85.00	1.86	0.79	1.68
	11591.00	91.6600	181.3800	-4322.45	81.92	7087.09	4322.48	5194.00	85.00	0.78	-0.14	-0.76
	11676.00	89.9300	180.2600	-4407.43	80.70	7085.91	4407.46	5278.99	85.00	2.42	-2.04	-1.32
	11761.00	89.2000	179.9400	-4492.43	80.55	7086.56	4492.46	5363.99	85.00	0.94	-0.86	-0.38
	11846.00	88.7600	179.1900	-4577.41	81.20	7088.07	4577.44	5448.97	85.00	1.02	-0.52	-0.88
	11932.00	88.9500	180.4100	-4663.39	81.50	7089.79	4663.42	5534.95	86.00	1.44	0.22	1.42
	12017.00	89.2800	179.8900	-4748.38	81.28	7091.10	4748.41	5619.94	85.00	0.72	0.39	-0.61
	12102.00	90.2400	180.4100	-4833.38	81.05	7091.46	4833.41	5704.94	85.00	1.28	1.13	0.61
	12187.00	90.1500	180.3400	-4918.38	80.50	7091.17	4918.41	5789.94	85.00	0.13	-0.11	-0.08
	12272.00	89.9300	181.1400	-5003.37	79.40	7091.11	5003.40	5874.94	85.00	0.98	-0.26	0.94
	12358.00	91.3200	179.0600	-5089.36	79.25	7090.17	5089.39	5960.93	86.00	2.91	1.62	-2.42
	12443.00	91.7400	180.0000	-5174.32	79.95	7087.90	5174.35	6045.90	85.00	1.21	0.49	1.11
	12528.00	90.4500	180.0400	-5259.31	79.92	7086.28	5259.33	6130.88	85.00	1.52	-1.52	0.05
	12613.00	91.1000	179.4500	-5344.30	80.30	7085.13	5344.32	6215.87	85.00	1.03	0.76	-0.69
	12698.00	89.5300	177.9000	-5429.27	82.26	7084.66	5429.30	6300.86	85.00	2.60	-1.85	-1.82
	12783.00	90.0300	177.1400	-5514.19	85.94	7084.98	5514.22	6385.86	85.00	1.07	0.59	-0.89
	12868.00	90.0000	178.1300	-5599.11	89.45	7084.96	5599.14	6470.86	85.00	1.17	-0.04	1.16
	12953.00	90.2400	178.0800	-5684.07	92.26	7084.78	5684.10	6555.86	85.00	0.29	0.28	-0.06
Tie	MD ft	Incl deg	Azim deg	North ft	East ft	TVD ft	VS ft	Incr VS ft	Crs Len ft	DLS deg/100ft	Build deg/100ft	Turn deg/100ft
	13038.00	90.7300	177.6000	-5769.00	95.46	7084.07	5769.04	6640.86	85.00	0.81	0.58	-0.56
	13124.00	89.1300	177.5800	-5854.92	99.08	7084.17	5854.96	6726.85	86.00	1.86	-1.86	-0.02
	13209.00	87.6200	179.7100	-5939.86	101.09	7086.58	5939.89	6811.81	85.00	3.07	-1.78	2.51
	13294.00	87.8400	181.3700	-6024.78	100.29	7089.95	6024.82	6896.74	85.00	1.97	0.26	1.95
	13379.00	88.6700	181.2800	-6109.72	98.32	7092.54	6109.76	6981.70	85.00	0.98	0.98	-0.11
	13465.00	88.3300	182.1200	-6195.65	95.77	7094.79	6195.69	7067.67	86.00	1.05	-0.40	0.98
	13550.00	90.4300	182.7100	-6280.57	92.19	7095.71	6280.60	7152.66	85.00	2.57	2.47	0.69
	13635.00	90.5800	180.8600	-6365.52	89.54	7094.96	6365.55	7237.66	85.00	2.18	0.18	-2.18
	13720.00	90.5200	182.1800	-6450.48	87.29	7094.14	6450.51	7322.65	85.00	1.55	-0.07	1.55
	13806.00	90.4900	182.2600	-6536.42	83.96	7093.38	6536.44	7408.65	86.00	0.10	-0.03	0.09
	13867.00	90.4000	181.9700	-6597.37	81.71	7092.91	6597.40	7469.64	61.00	0.50	-0.15	-0.48
	Projection to TD:											
	13923.00	90.4000	181.9700	-6653.34	79.78	7092.52	6653.37	7525.64	56.00	0.00	0.00	0.00

