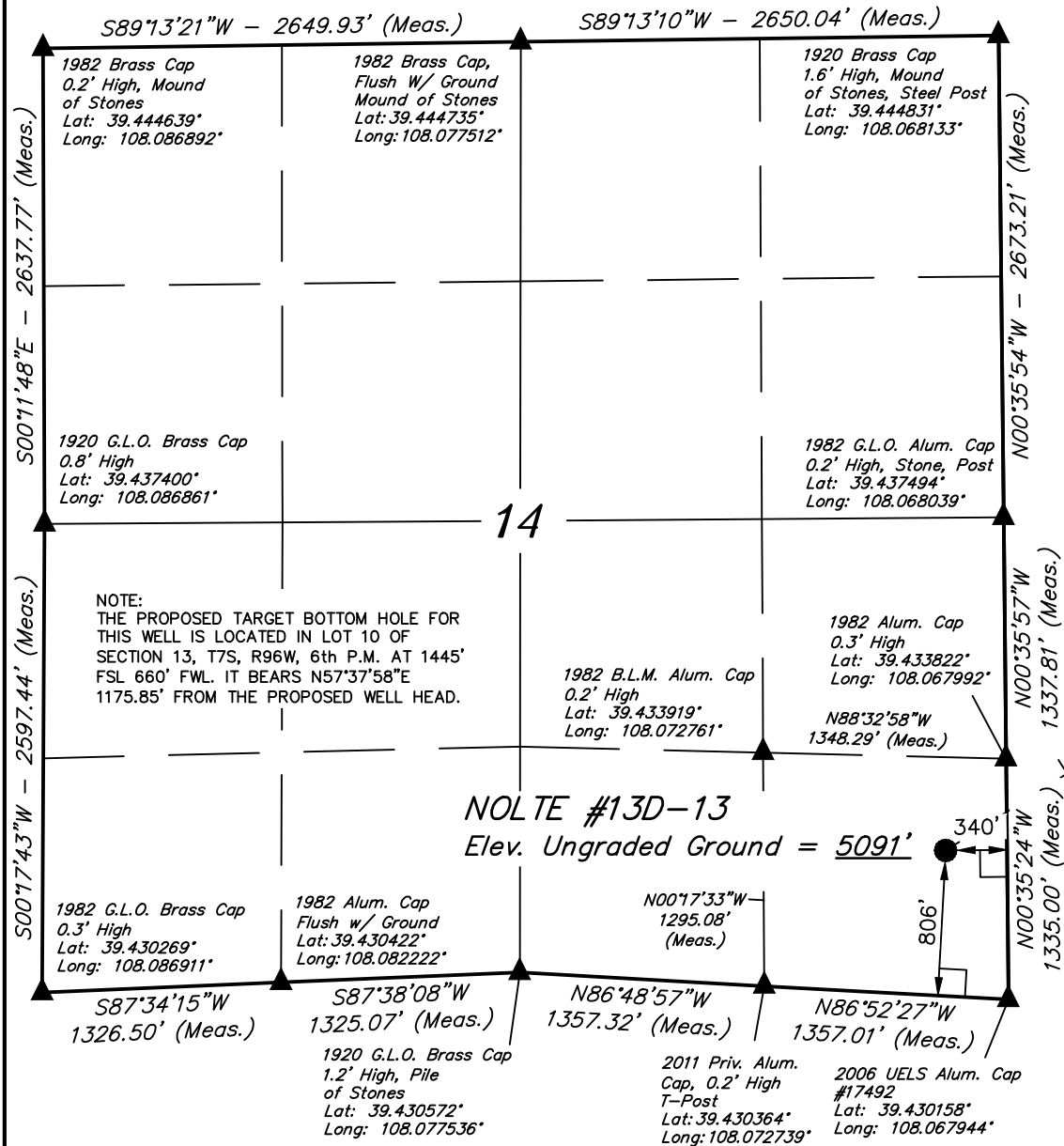


T7S, R96W, 6th P.M.



Caerus Piceance LLC

Well location, NOLTE #13D-13 (SURFACE LOCATION), located as shown in the SE 1/4 SE 1/4 of Section 14, T7S, R96W, 6th P.M., Garfield County, Colorado.

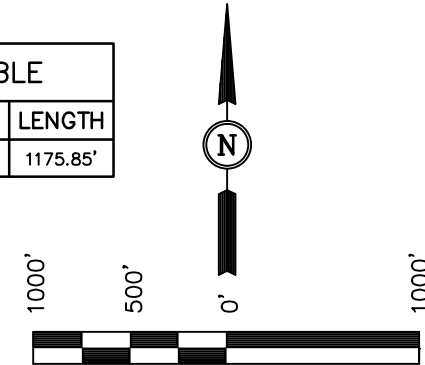
BASIS OF ELEVATION

SPOT ELEVATION AT THE NORTHWEST CORNER OF SECTION 30, T5S, R95W, 6th P.M., TAKEN FROM THE FORKED GULCH QUADRANGLE, GARFIELD COUNTY, COLORADO, 7.5 MINUTE QUAD. (TOPOGRAPHIC MAP) PUBLISHED BY THE UNITED STATES DEPARTMENT OF THE INTERIOR, GEOLOGICAL SURVEY. SAID ELEVATION IS MARKED AS BEING 5966 FEET.

BASIS OF BEARINGS

BASIS OF BEARINGS IS A G.P.S. OBSERVATION.

LINE TABLE		
LINE	DIRECTION	LENGTH
L1	N57°37'58"E	1175.85'



SCALE
CERTIFICATE

THIS IS TO CERTIFY THAT THE ABOVE PLAT WAS PREPARED FROM FIELD NOTES OF ACTUAL SURVEYS MADE BY ME OR UNDER MY SUPERVISION AND THAT THE SAME ARE TRUE AND CORRECT TO THE BEST OF MY KNOWLEDGE AND BELIEF.

REGISTERED LAND SURVEYOR
REGISTRATION NO. 17492
STATE OF COLORADO
09-04-13

UINTAH ENGINEERING & LAND SURVEYING
85 SOUTH 200 EAST - VERNAL, UTAH 84078
(435) 789-1017

LEGEND:

- └─┘ = 90° SYMBOL
- = PROPOSED WELL HEAD.
- ▲ = SECTION CORNERS LOCATED.

PDOP = 2.1

NAD 83 (SURFACE LOCATION)	
LATITUDE	= 39°25'56.74" (39.432428)
LONGITUDE	= 108°04'09.03" (108.069175)
NAD 27 (SURFACE LOCATION)	
LATITUDE	= 39°25'56.82" (39.432450)
LONGITUDE	= 108°04'06.76" (108.068544)

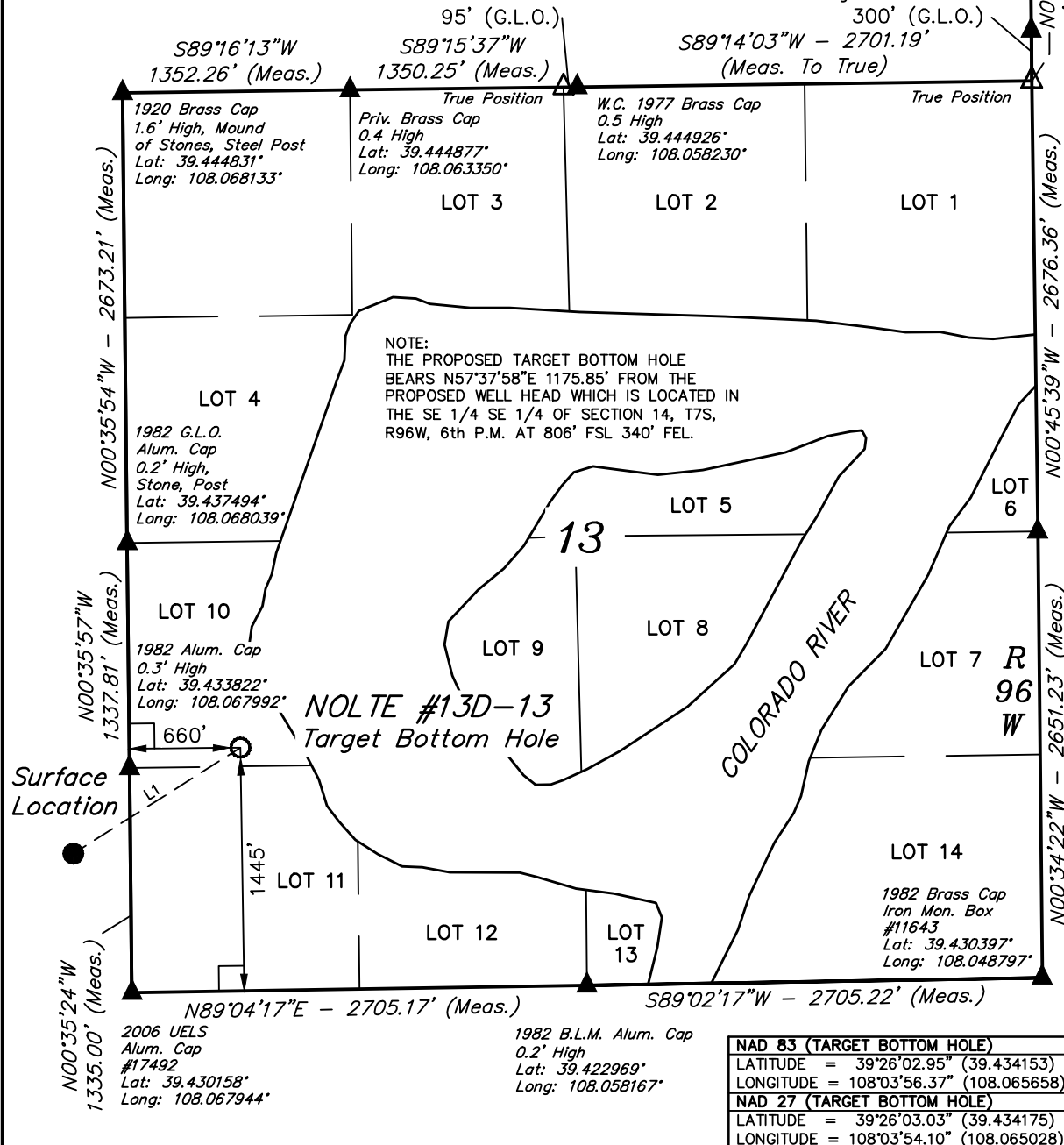
SCALE 1" = 1000'	DATE SURVEYED: 06-13-13	DATE DRAWN: 08-29-13
PARTY B.J. B.B. T.B.	REFERENCES G.L.O. PLAT	
WEATHER WARM	FILE Caerus Piceance LLC	

T7S, R96W, 6th P.M.

E 1/4 Cor. Sec. 12
1973 Brass Cap
0.1' High, Steel Post
Lat: 39.452428°
Long: 108.049101°

W.C. 1984 Priv. Brass Cap
Flush w/Ground, #18480
Lat: 39.445840°
Long: 108.049016°

LINE TABLE		
LINE	DIRECTION	LENGTH
L1	N57°37'58"E	1175.85'



Caerus Piceance LLC

Well location, NOLTE #13D-13 (TARGET BOTTOM HOLE), located as shown in LOT 10 of Section 13, T7S, R96W, 6th P.M., Garfield County, Colorado.

BASIS OF ELEVATION

SPOT ELEVATION AT THE NORTHWEST CORNER OF SECTION 30, T5S, R95W, 6th P.M., TAKEN FROM THE FORKED GULCH QUADRANGLE, GARFIELD COUNTY, COLORADO, 7.5 MINUTE QUAD. (TOPOGRAPHIC MAP) PUBLISHED BY THE UNITED STATES DEPARTMENT OF THE INTERIOR, GEOLOGICAL SURVEY. SAID ELEVATION IS MARKED AS BEING 5966 FEET.

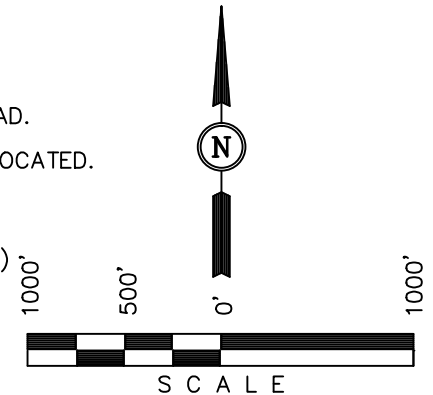
BASIS OF BEARINGS

BASIS OF BEARINGS IS A G.P.S. OBSERVATION.

LEGEND:

- └ = 90° SYMBOL
- = PROPOSED WELL HEAD.
- ▲ = SECTION CORNERS LOCATED.
- △ = SECTION CORNERS RE-ESTABLISHED. (Not Set on Ground.)

B.O.R. Brass Cap
1.4' High
Lat: 39.437672°
Long: 108.048886°



CERTIFICATE

THIS IS TO CERTIFY THAT THE ABOVE PLAT WAS PREPARED FROM FIELD NOTES OF ACTUAL SURVEYS MADE BY ME OR UNDER MY SUPERVISION AND THAT THE SAME ARE TRUE AND CORRECT TO THE BEST OF MY KNOWLEDGE AND BELIEF.

REGISTERED LAND SURVEYOR
REGISTRATION NO. 17492
STATE OF COLORADO
09-04-13

UINTAH ENGINEERING & LAND SURVEYING
85 SOUTH 200 EAST - VERNAL, UTAH 84078
(435) 789-1017

SCALE 1" = 1000'	DATE SURVEYED: 06-13-13	DATE DRAWN: 08-29-13
PARTY B.J. B.B. T.B.	REFERENCES G.L.O. PLAT	
WEATHER WARM	FILE Caerus Piceance LLC	

NAD 83 (TARGET BOTTOM HOLE)	
LATITUDE = 39°26'02.95" (39.434153)	LONGITUDE = 108°03'56.37" (108.065658)
NAD 27 (TARGET BOTTOM HOLE)	
LATITUDE = 39°26'03.03" (39.434175)	LONGITUDE = 108°03'54.10" (108.065028)