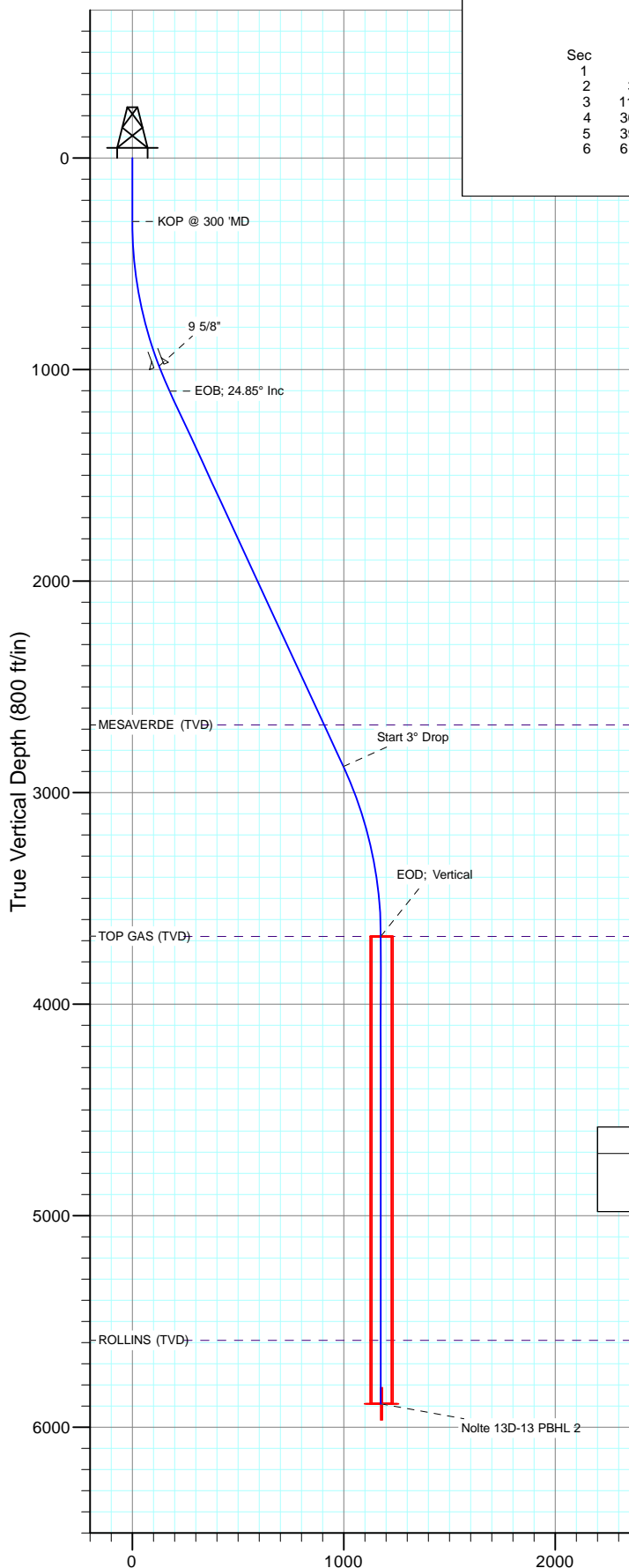
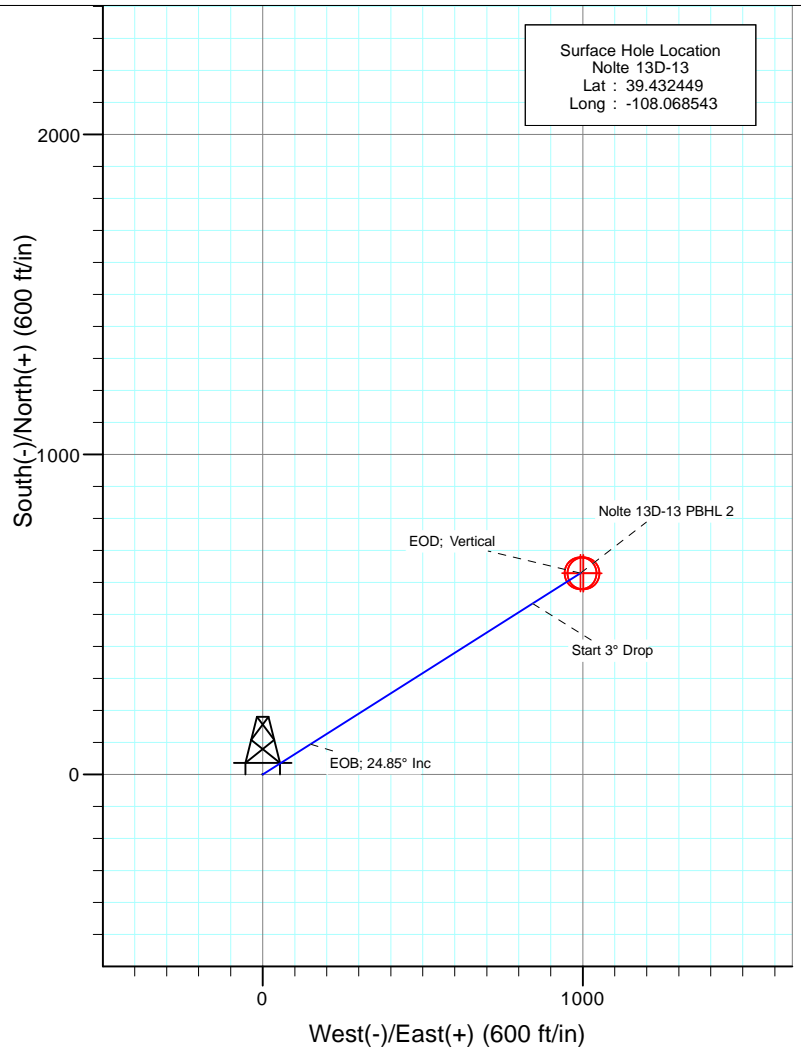




Project: Garfield County, CO
 Site: S14-T7S-R96W
 Well: Nolte 13D-13
 Wellbore: DD
 Design: Plan #3



SECTION DETAILS										
Sec	MD	Inc	Azi	TVD	+N/-S	+E/-W	Dleg	TFace	Vsect	Target
1	0.0	0.00	0.00	0.0	0.0	0.0	0.00	0.00	0.0	
2	300.0	0.00	0.00	300.0	0.0	0.0	0.00	0.00	0.0	
3	1128.2	24.85	57.66	1102.5	94.6	149.4	3.00	57.66	176.8	
4	3084.3	24.85	57.66	2877.5	534.3	843.8	0.00	0.00	998.7	
5	3912.5	0.00	0.00	3680.0	628.9	993.1	3.00	180.00	1175.5	
6	6122.5	0.00	0.00	5890.0	628.9	993.1	0.00	0.00	1175.5	Nolte 13D-13 PBHL 2



DESIGN TARGET DETAILS						
Name	+N/-S	+E/-W	Northing	Easting	Latitude	Longitude
Nolte 13D-13 PBHL	628.5	1002.3	593244.27	1275601.45	39.434174	-108.064995
Nolte 13D-13 PBHL 2	628.9	993.1	593244.87	1275592.29	39.434175	-108.065027

FORMATION TOP DETAILS		
TVDPath	MDPath	Formation
2680.0	2866.6	MESAVERDE (TVD)
3680.0	3912.5	TOP GAS (TVD)
5590.0	5822.5	ROLLINS (TVD)

Plan #3
 Nolte 13D-13
 WELL @ 5117.8ft (Original Well Elev)
 Ground Elevation @ 5090.5
 NAD 1927 (NADCON CONUS)
 Well Nolte 13D-13, True North

M Azimuths to True North
 Magnetic North: 10.11°
 Magnetic Field
 Strength: 52003.0snT
 Dip Angle: 65.62°
 Date: 7/15/2013
 Model: IGRF2010

Vertical Section at 57.91° (800 ft/in)

Cathedral Energy Services

Planning Report

Database:	USA EDM 5000 Multi Users DB	Local Co-ordinate Reference:	Well Nolte 13D-13
Company:	Caerus Oil & Gas (NAD 27)	TVD Reference:	WELL @ 5117.8ft (Original Well Elev)
Project:	Garfield County, CO	MD Reference:	WELL @ 5117.8ft (Original Well Elev)
Site:	S14-T7S-R96W	North Reference:	True
Well:	Nolte 13D-13	Survey Calculation Method:	Minimum Curvature
Wellbore:	DD		
Design:	Plan #3		

Project	Garfield County, CO		
Map System:	US State Plane 1927 (Exact solution)	System Datum:	Mean Sea Level
Geo Datum:	NAD 1927 (NADCON CONUS)		
Map Zone:	Colorado Central 502		

Site		S14-T7S-R96W			
Site Position:		Northing:	592,603.28 ft	Latitude:	39.432320
From:	Lat/Long	Easting:	1,274,372.48 ft	Longitude:	-108.069280
Position Uncertainty:	0.0 ft	Slot Radius:	13.200 in	Grid Convergence:	-1.62 °

Well	Nolte 13D-13					
Well Position	+N/-S	0.0 ft	Northing:	592,644.35 ft	Latitude:	39.432449
	+E/-W	0.0 ft	Easting:	1,274,581.79 ft	Longitude:	-108.068543
Position Uncertainty		0.0 ft	Wellhead Elevation:	ft	Ground Level:	5,090.5 ft

Wellbore	DD				
Magnetics	Model Name	Sample Date	Declination	Dip Angle	Field Strength
			(°)	(°)	(nT)
	IGRF2010	7/15/2013	10.11	65.62	52,003

Design	Plan #3				
Audit Notes:					
Version:	Phase:	PLAN	Tie On Depth:	0.0	
Vertical Section:	Depth From (TVD)	+N/-S	+E/-W	Direction	
	(ft)	(ft)	(ft)	(°)	
	0.0	0.0	0.0	57.91	

Plan Sections										
Measured Depth	Inclination	Azimuth	Vertical Depth	+N/-S	+E/-W	Dogleg Rate	Build Rate	Turn Rate	TFO	Target
(ft)	(°)	(°)	(ft)	(ft)	(ft)	(°/100ft)	(°/100ft)	(°/100ft)	(°)	
0.0	0.00	0.00	0.0	0.0	0.0	0.00	0.00	0.00	0.00	
300.0	0.00	0.00	300.0	0.0	0.0	0.00	0.00	0.00	0.00	
1,128.2	24.85	57.66	1,102.5	94.6	149.4	3.00	3.00	0.00	57.66	
3,084.3	24.85	57.66	2,877.5	534.3	843.8	0.00	0.00	0.00	0.00	
3,912.5	0.00	0.00	3,680.0	628.9	993.1	3.00	-3.00	0.00	180.00	
6,122.5	0.00	0.00	5,890.0	628.9	993.1	0.00	0.00	0.00	0.00	Nolte 13D-13 PBHL 2

Cathedral Energy Services

Planning Report

Database:	USA EDM 5000 Multi Users DB	Local Co-ordinate Reference:	Well Nolte 13D-13
Company:	Caerus Oil & Gas (NAD 27)	TVD Reference:	WELL @ 5117.8ft (Original Well Elev)
Project:	Garfield County, CO	MD Reference:	WELL @ 5117.8ft (Original Well Elev)
Site:	S14-T7S-R96W	North Reference:	True
Well:	Nolte 13D-13	Survey Calculation Method:	Minimum Curvature
Wellbore:	DD		
Design:	Plan #3		

Planned Survey

Measured Depth (ft)	Inclination (°)	Azimuth (°)	Vertical Depth (ft)	+N/-S (ft)	+E/-W (ft)	Vertical Section (ft)	Dogleg Rate (°/100ft)	Build Rate (°/100ft)	Comments / Formations
0.0	0.00	0.00	0.0	0.0	0.0	0.0	0.00	0.00	
100.0	0.00	0.00	100.0	0.0	0.0	0.0	0.00	0.00	
200.0	0.00	0.00	200.0	0.0	0.0	0.0	0.00	0.00	
300.0	0.00	0.00	300.0	0.0	0.0	0.0	0.00	0.00	KOP @ 300 'MD
400.0	3.00	57.66	400.0	1.4	2.2	2.6	3.00	3.00	
500.0	6.00	57.66	499.6	5.6	8.8	10.5	3.00	3.00	
600.0	9.00	57.66	598.8	12.6	19.9	23.5	3.00	3.00	
700.0	12.00	57.66	697.1	22.3	35.3	41.7	3.00	3.00	
800.0	15.00	57.66	794.3	34.8	55.0	65.1	3.00	3.00	
900.0	18.00	57.66	890.2	50.0	79.0	93.5	3.00	3.00	
1,000.0	21.00	57.66	984.4	67.9	107.2	126.9	3.00	3.00	9 5/8"
1,100.0	24.00	57.66	1,076.8	88.3	139.5	165.1	3.00	3.00	
1,128.2	24.85	57.66	1,102.5	94.6	149.4	176.8	3.00	3.00	EOB; 24.85° Inc
1,200.0	24.85	57.66	1,167.6	110.7	174.8	206.9	0.00	0.00	
1,300.0	24.85	57.66	1,258.4	133.2	210.3	249.0	0.00	0.00	
1,400.0	24.85	57.66	1,349.1	155.7	245.8	291.0	0.00	0.00	
1,500.0	24.85	57.66	1,439.9	178.1	281.3	333.0	0.00	0.00	
1,600.0	24.85	57.66	1,530.6	200.6	316.8	375.0	0.00	0.00	
1,700.0	24.85	57.66	1,621.4	223.1	352.3	417.0	0.00	0.00	
1,800.0	24.85	57.66	1,712.1	245.6	387.8	459.1	0.00	0.00	
1,900.0	24.85	57.66	1,802.8	268.1	423.3	501.1	0.00	0.00	
2,000.0	24.85	57.66	1,893.6	290.5	458.8	543.1	0.00	0.00	
2,100.0	24.85	57.66	1,984.3	313.0	494.3	585.1	0.00	0.00	
2,200.0	24.85	57.66	2,075.1	335.5	529.8	627.1	0.00	0.00	
2,300.0	24.85	57.66	2,165.8	358.0	565.3	669.1	0.00	0.00	
2,400.0	24.85	57.66	2,256.6	380.5	600.8	711.2	0.00	0.00	
2,500.0	24.85	57.66	2,347.3	402.9	636.3	753.2	0.00	0.00	
2,600.0	24.85	57.66	2,438.1	425.4	671.8	795.2	0.00	0.00	
2,700.0	24.85	57.66	2,528.8	447.9	707.3	837.2	0.00	0.00	
2,800.0	24.85	57.66	2,619.5	470.4	742.8	879.2	0.00	0.00	
2,866.6	24.85	57.66	2,680.0	485.4	766.5	907.2	0.00	0.00	MESAVERDE (TVD)
2,900.0	24.85	57.66	2,710.3	492.9	778.3	921.3	0.00	0.00	
3,000.0	24.85	57.66	2,801.0	515.3	813.8	963.3	0.00	0.00	
3,084.3	24.85	57.66	2,877.5	534.3	843.8	998.7	0.00	0.00	Start 3° Drop
3,100.0	24.37	57.66	2,891.8	537.8	849.3	1,005.2	3.00	-3.00	
3,200.0	21.37	57.66	2,983.9	558.6	882.1	1,044.1	3.00	-3.00	
3,300.0	18.37	57.66	3,078.0	576.8	910.8	1,078.1	3.00	-3.00	
3,400.0	15.37	57.66	3,173.6	592.3	935.4	1,107.1	3.00	-3.00	
3,500.0	12.37	57.66	3,270.7	605.1	955.6	1,131.1	3.00	-3.00	
3,600.0	9.37	57.66	3,368.9	615.2	971.6	1,150.0	3.00	-3.00	
3,700.0	6.37	57.66	3,468.0	622.5	983.1	1,163.7	3.00	-3.00	
3,800.0	3.37	57.66	3,567.6	627.1	990.3	1,172.1	3.00	-3.00	
3,900.0	0.37	57.66	3,667.5	628.8	993.1	1,175.4	3.00	-3.00	
3,912.5	0.00	0.00	3,680.0	628.9	993.1	1,175.5	3.00	-3.00	EOD; Vertical - TOP GAS (TVD)
4,000.0	0.00	0.00	3,767.5	628.9	993.1	1,175.5	0.00	0.00	
4,100.0	0.00	0.00	3,867.5	628.9	993.1	1,175.5	0.00	0.00	
4,200.0	0.00	0.00	3,967.5	628.9	993.1	1,175.5	0.00	0.00	
4,300.0	0.00	0.00	4,067.5	628.9	993.1	1,175.5	0.00	0.00	
4,400.0	0.00	0.00	4,167.5	628.9	993.1	1,175.5	0.00	0.00	
4,500.0	0.00	0.00	4,267.5	628.9	993.1	1,175.5	0.00	0.00	
4,600.0	0.00	0.00	4,367.5	628.9	993.1	1,175.5	0.00	0.00	
4,700.0	0.00	0.00	4,467.5	628.9	993.1	1,175.5	0.00	0.00	

Cathedral Energy Services

Planning Report

Database:	USA EDM 5000 Multi Users DB	Local Co-ordinate Reference:	Well Nolte 13D-13
Company:	Caerus Oil & Gas (NAD 27)	TVD Reference:	WELL @ 5117.8ft (Original Well Elev)
Project:	Garfield County, CO	MD Reference:	WELL @ 5117.8ft (Original Well Elev)
Site:	S14-T7S-R96W	North Reference:	True
Well:	Nolte 13D-13	Survey Calculation Method:	Minimum Curvature
Wellbore:	DD		
Design:	Plan #3		

Planned Survey

Measured Depth (ft)	Inclination (°)	Azimuth (°)	Vertical Depth (ft)	+N/-S (ft)	+E/-W (ft)	Vertical Section (ft)	Dogleg Rate (°/100ft)	Build Rate (°/100ft)	Comments / Formations
4,800.0	0.00	0.00	4,567.5	628.9	993.1	1,175.5	0.00	0.00	
4,900.0	0.00	0.00	4,667.5	628.9	993.1	1,175.5	0.00	0.00	
5,000.0	0.00	0.00	4,767.5	628.9	993.1	1,175.5	0.00	0.00	
5,100.0	0.00	0.00	4,867.5	628.9	993.1	1,175.5	0.00	0.00	
5,200.0	0.00	0.00	4,967.5	628.9	993.1	1,175.5	0.00	0.00	
5,300.0	0.00	0.00	5,067.5	628.9	993.1	1,175.5	0.00	0.00	
5,400.0	0.00	0.00	5,167.5	628.9	993.1	1,175.5	0.00	0.00	
5,500.0	0.00	0.00	5,267.5	628.9	993.1	1,175.5	0.00	0.00	
5,600.0	0.00	0.00	5,367.5	628.9	993.1	1,175.5	0.00	0.00	
5,700.0	0.00	0.00	5,467.5	628.9	993.1	1,175.5	0.00	0.00	
5,800.0	0.00	0.00	5,567.5	628.9	993.1	1,175.5	0.00	0.00	
5,822.5	0.00	0.00	5,590.0	628.9	993.1	1,175.5	0.00	0.00	ROLLINS (TVD)
5,900.0	0.00	0.00	5,667.5	628.9	993.1	1,175.5	0.00	0.00	
6,000.0	0.00	0.00	5,767.5	628.9	993.1	1,175.5	0.00	0.00	
6,100.0	0.00	0.00	5,867.5	628.9	993.1	1,175.5	0.00	0.00	
6,122.5	0.00	0.00	5,890.0	628.9	993.1	1,175.5	0.00	0.00	PBHL @ 6,122' MD

Targets

Target Name	Dip Angle (°)	Dip Dir. (°)	TVD (ft)	+N/-S (ft)	+E/-W (ft)	Northing (ft)	Easting (ft)	Latitude	Longitude
- hit/miss target									
- Shape									
Nolte 13D-13 PBHL	0.00	0.00	5,890.0	628.5	1,002.3	593,244.27	1,275,601.45	39.434174	-108.064995
- plan misses target center by 9.2ft at 6122.5ft MD (5890.0 TVD, 628.9 N, 993.1 E)									
- Circle (radius 50.0)									
Nolte 13D-13 PBHL 2	0.00	0.00	5,890.0	628.9	993.1	593,244.87	1,275,592.29	39.434175	-108.065027
- plan hits target center									
- Circle (radius 50.0)									

Casing Points

Measured Depth (ft)	Vertical Depth (ft)	Name	Casing Diameter (in)	Hole Diameter (in)
1,000.0	984.4	9 5/8"	9.625	12.250

Formations

Measured Depth (ft)	Vertical Depth (ft)	Name	Lithology	Dip (°)	Dip Direction (°)
2,866.6	2,680.0	MESAVERDE (TVD)		0.00	
3,912.5	3,680.0	TOP GAS (TVD)		0.00	
5,822.5	5,590.0	ROLLINS (TVD)		0.00	

Cathedral Energy Services

Planning Report

Database:	USA EDM 5000 Multi Users DB	Local Co-ordinate Reference:	Well Nolte 13D-13
Company:	Caerus Oil & Gas (NAD 27)	TVD Reference:	WELL @ 5117.8ft (Original Well Elev)
Project:	Garfield County, CO	MD Reference:	WELL @ 5117.8ft (Original Well Elev)
Site:	S14-T7S-R96W	North Reference:	True
Well:	Nolte 13D-13	Survey Calculation Method:	Minimum Curvature
Wellbore:	DD		
Design:	Plan #3		

Plan Annotations

Measured Depth (ft)	Vertical Depth (ft)	Local Coordinates		Comment
		+N/-S (ft)	+E/-W (ft)	
300.0	300.0	0.0	0.0	KOP @ 300 'MD
1,128.2	1,102.5	94.6	149.4	EOB; 24.85° Inc
3,084.3	2,877.5	534.3	843.8	Start 3° Drop
3,912.5	3,680.0	628.9	993.1	EOD; Vertical
6,122.5	5,890.0	628.9	993.1	PBHL @ 6,122' MD

Caerus Oil & Gas (NAD 27)

Garfield County, CO

S14-T7S-R96W

Nolte 13D-13

DD

Plan #3

Anticollision Report

09 September, 2013

Cathedral Energy Services

Anticollision Report

Company:	Caerus Oil & Gas (NAD 27)	Local Co-ordinate Reference:	Well Nolte 13D-13
Project:	Garfield County, CO	TVD Reference:	WELL @ 5117.8ft (Original Well Elev)
Reference Site:	S14-T7S-R96W	MD Reference:	WELL @ 5117.8ft (Original Well Elev)
Site Error:	0.0ft	North Reference:	True
Reference Well:	Nolte 13D-13	Survey Calculation Method:	Minimum Curvature
Well Error:	0.0ft	Output errors are at	2.00 sigma
Reference Wellbore	DD	Database:	USA EDM 5000 Multi Users DB
Reference Design:	Plan #3	Offset TVD Reference:	Offset Datum

Reference	Plan #3		
Filter type:	NO GLOBAL FILTER: Using user defined selection & filtering criteria		
Interpolation Method:	MD Interval 100.0ft	Error Model:	ISCWSA
Depth Range:	Unlimited	Scan Method:	Closest Approach 3D
Results Limited by:	Maximum center-center distance of 1,356.1ft	Error Surface:	Elliptical Conic
Warning Levels Evaluated at:	2.00 Sigma		

Survey Tool Program	Date	8/29/2013		
From (ft)	To (ft)	Survey (Wellbore)	Tool Name	Description
0.0	6,122.5	Plan #3 (DD)	MWD	Geolink MWD

Summary						
Site Name	Reference Measured Depth (ft)	Offset Measured Depth (ft)	Distance Between Centres (ft)	Distance Between Ellipses (ft)	Separation Factor	Warning
Offset Well - Wellbore - Design						
S14-T7S-R96W						
Nolte 11A-24 - DD - Plan #3	300.0	300.0	40.0	39.0	41.979	CC, ES
Nolte 11A-24 - DD - Plan #3	500.0	498.0	52.1	50.4	30.703	SF
Nolte 11B-24 - DD - Plan #3	200.0	200.0	48.0	47.4	79.489	CC, ES
Nolte 11B-24 - DD - Plan #3	500.0	494.5	68.1	66.3	38.625	SF
Nolte 11C-24 - DD - Plan #3	244.4	234.7	56.0	55.2	73.772	CC, ES
Nolte 11C-24 - DD - Plan #3	600.0	581.1	91.5	89.4	42.444	SF
Nolte 13A-13 - DD - Plan #3	200.0	200.0	12.8	12.2	21.221	CC, ES
Nolte 13A-13 - DD - Plan #3	1,200.0	1,173.4	125.2	116.5	14.322	SF
Nolte 13B-13 - DD - Plan #3	312.1	312.2	9.9	8.9	9.915	CC, ES
Nolte 13B-13 - DD - Plan #3	500.0	499.7	14.2	12.4	8.020	SF
Nolte 13C-13 - DD - Plan #3	200.0	199.8	8.0	7.4	13.272	CC, ES
Nolte 13C-13 - DD - Plan #3	6,122.5	6,198.2	329.9	287.6	7.805	SF
Nolte 14A-13 - DD - Plan #3	300.0	300.0	8.0	7.0	8.403	CC, ES
Nolte 14A-13 - DD - Plan #3	6,100.0	6,057.5	329.9	287.5	7.781	SF
Nolte 14B-13 - DD - Plan #3	300.0	300.0	16.0	15.0	16.799	CC, ES
Nolte 14B-13 - DD - Plan #3	400.0	400.0	18.3	17.0	14.066	SF
Nolte 14C-13 - DD - Plan #3	300.0	300.0	23.5	22.6	24.683	CC, ES
Nolte 14C-13 - DD - Plan #3	400.0	400.0	25.8	24.5	19.830	SF
Nolte 14D-13 - DD - Plan #3	300.0	300.0	32.0	31.0	33.580	CC, ES
Nolte 14D-13 - DD - Plan #3	500.0	499.6	41.4	39.7	24.918	SF
Nolte 43A-14 - DD - Plan #3	300.0	300.0	12.8	11.9	13.447	CC, ES
Nolte 43A-14 - DD - Plan #3	400.0	399.9	15.3	14.0	11.723	SF
Nolte 43B-14 - DD - Plan #3	300.0	300.0	18.9	17.9	19.805	CC, ES
Nolte 43B-14 - DD - Plan #3	400.0	400.1	21.3	20.0	16.366	SF
Nolte 43C-14 - DD - Plan #3	300.0	300.0	26.0	25.0	27.262	CC, ES
Nolte 43C-14 - DD - Plan #3	500.0	500.1	35.7	34.0	21.606	SF
Nolte 44A-14 - DD - Plan #3	300.0	300.0	33.5	32.6	35.152	CC, ES
Nolte 44A-14 - DD - Plan #3	500.0	499.8	43.7	42.0	26.513	SF
Nolte 44B-14 - DD - Plan #3	300.0	300.0	41.2	40.3	43.233	CC, ES
Nolte 44B-14 - DD - Plan #3	500.0	499.6	51.3	49.7	31.152	SF
Nolte 44C-14 - DD - Plan #3	300.0	300.0	49.0	48.1	51.404	CC, ES
Nolte 44C-14 - DD - Plan #3	500.0	497.2	61.1	59.4	37.095	SF
Nolte SWD 1-14 - DD - Plan #3	300.0	300.0	56.9	55.9	59.627	CC, ES
Nolte SWD 1-14 - DD - Plan #3	600.0	598.8	79.4	77.4	39.765	SF

CC - Min centre to center distance or convergent point, SF - min separation factor, ES - min ellipse separation

Cathedral Energy Services

Anticollision Report

Company:	Caerus Oil & Gas (NAD 27)	Local Co-ordinate Reference:	Well Nolte 13D-13
Project:	Garfield County, CO	TVD Reference:	WELL @ 5117.8ft (Original Well Elev)
Reference Site:	S14-T7S-R96W	MD Reference:	WELL @ 5117.8ft (Original Well Elev)
Site Error:	0.0ft	North Reference:	True
Reference Well:	Nolte 13D-13	Survey Calculation Method:	Minimum Curvature
Well Error:	0.0ft	Output errors are at	2.00 sigma
Reference Wellbore	DD	Database:	USA EDM 5000 Multi Users DB
Reference Design:	Plan #3	Offset TVD Reference:	Offset Datum

Offset Design S14-T7S-R96W - Nolte 11A-24 - DD - Plan #3													Offset Site Error:	0.0 ft
Survey Program: 0-MWD													Offset Well Error:	0.0 ft
Reference		Offset		Semi Major Axis			Distance						Warning	
Measured Depth (ft)	Vertical Depth (ft)	Measured Depth (ft)	Vertical Depth (ft)	Reference (ft)	Offset (ft)	Highside Toolface (°)	Offset Wellbore Centre +N/-S (ft)	+E/-W (ft)	Between Centres (ft)	Between Ellipses (ft)	Total Uncertainty Axis	Separation Factor		
0.0	0.0	0.0	0.0	0.0	0.0	-152.49	-35.5	-18.5	40.0					
100.0	100.0	100.0	100.0	0.1	0.1	-152.49	-35.5	-18.5	40.0	39.7	0.25	157.148		
200.0	200.0	200.0	200.0	0.3	0.3	-152.49	-35.5	-18.5	40.0	39.4	0.60	66.258		
300.0	300.0	300.0	300.0	0.5	0.5	-152.49	-35.5	-18.5	40.0	39.0	0.95	41.979 CC, ES		
400.0	400.0	399.3	399.3	0.7	0.7	148.24	-37.2	-16.6	43.0	41.7	1.31	32.881		
500.0	499.6	498.0	497.7	0.9	0.9	144.50	-42.5	-11.0	52.1	50.4	1.70	30.703 SF		
600.0	598.8	595.6	594.4	1.1	1.1	140.48	-51.2	-1.9	67.5	65.3	2.15	31.336		
700.0	697.1	691.4	688.6	1.5	1.5	137.10	-62.9	10.5	89.2	86.5	2.70	32.983		
800.0	794.3	784.9	779.7	1.9	1.9	134.46	-77.6	26.0	117.0	113.6	3.36	34.816		
900.0	890.2	875.8	867.1	2.5	2.3	132.39	-94.7	44.1	150.6	146.5	4.13	36.516		
1,000.0	984.4	963.7	950.4	3.1	2.9	130.67	-114.0	64.4	189.9	184.9	5.00	37.998		
1,100.0	1,076.8	1,048.2	1,029.2	3.8	3.4	129.17	-135.0	86.6	234.4	228.4	5.97	39.270		
1,200.0	1,167.6	1,129.7	1,103.8	4.6	4.0	128.51	-157.5	110.3	283.1	276.1	7.02	40.350		
1,300.0	1,258.4	1,208.8	1,174.9	5.4	4.7	127.77	-181.4	135.6	333.9	325.8	8.12	41.141		
1,400.0	1,349.1	1,285.5	1,242.4	6.1	5.4	126.77	-206.5	162.1	386.7	377.5	9.26	41.763		
1,500.0	1,439.9	1,359.7	1,306.2	6.9	6.1	125.64	-232.5	189.6	441.5	431.1	10.43	42.321		
1,600.0	1,530.6	1,433.7	1,368.3	7.7	6.9	124.42	-260.1	218.7	498.2	486.6	11.62	42.878		
1,700.0	1,621.4	1,515.1	1,436.2	8.5	7.7	123.25	-290.9	251.3	555.6	542.8	12.86	43.192		
1,800.0	1,712.1	1,596.4	1,504.1	9.3	8.6	122.29	-321.8	283.8	613.2	599.1	14.11	43.465		
1,900.0	1,802.8	1,677.8	1,572.0	10.1	9.4	121.50	-352.7	316.4	670.8	655.5	15.35	43.702		
2,000.0	1,893.6	1,759.2	1,639.9	10.9	10.2	120.83	-383.5	349.0	728.6	712.0	16.59	43.912		
2,100.0	1,984.3	1,840.6	1,707.8	11.7	11.1	120.26	-414.4	381.6	786.3	768.5	17.83	44.098		
2,200.0	2,075.1	1,922.0	1,775.7	12.5	11.9	119.77	-445.3	414.2	844.2	825.1	19.07	44.264		
2,300.0	2,165.8	2,003.4	1,843.6	13.3	12.8	119.34	-476.1	446.8	902.0	881.7	20.31	44.413		
2,400.0	2,256.6	2,084.8	1,911.5	14.1	13.6	118.96	-507.0	479.4	959.9	938.4	21.55	44.547		
2,500.0	2,347.3	2,166.2	1,979.4	14.9	14.5	118.62	-537.8	511.9	1,017.8	995.0	22.79	44.668		
2,600.0	2,438.1	2,247.6	2,047.3	15.6	15.3	118.33	-568.7	544.5	1,075.7	1,051.7	24.02	44.778		
2,700.0	2,528.8	2,328.9	2,115.2	16.4	16.2	118.06	-599.6	577.1	1,133.7	1,108.4	25.26	44.879		
2,800.0	2,619.5	2,410.3	2,183.0	17.2	17.0	117.81	-630.4	609.7	1,191.7	1,165.2	26.50	44.971		
2,900.0	2,710.3	2,491.7	2,250.9	18.0	17.9	117.59	-661.3	642.3	1,249.6	1,221.9	27.74	45.056		
3,000.0	2,801.0	2,573.1	2,318.8	18.8	18.7	117.39	-692.2	674.9	1,307.6	1,278.6	28.97	45.134		

Cathedral Energy Services

Anticollision Report

Company:	Caerus Oil & Gas (NAD 27)	Local Co-ordinate Reference:	Well Nolte 13D-13
Project:	Garfield County, CO	TVD Reference:	WELL @ 5117.8ft (Original Well Elev)
Reference Site:	S14-T7S-R96W	MD Reference:	WELL @ 5117.8ft (Original Well Elev)
Site Error:	0.0ft	North Reference:	True
Reference Well:	Nolte 13D-13	Survey Calculation Method:	Minimum Curvature
Well Error:	0.0ft	Output errors are at	2.00 sigma
Reference Wellbore	DD	Database:	USA EDM 5000 Multi Users DB
Reference Design:	Plan #3	Offset TVD Reference:	Offset Datum

Offset Design S14-T7S-R96W - Nolte 11B-24 - DD - Plan #3													Offset Site Error:	0.0 ft
Survey Program: 0-MWD													Offset Well Error:	0.0 ft
Reference		Offset		Semi Major Axis		Distance		Total		Separation		Warning		
Measured Depth (ft)	Vertical Depth (ft)	Measured Depth (ft)	Vertical Depth (ft)	Reference (ft)	Offset (ft)	Highside Toolface (°)	Offset Wellbore Centre +N/-S (ft)	+E/-W (ft)	Between Centres (ft)	Between Ellipses (ft)	Uncertainty Axis	Factor		
0.0	0.0	0.0	0.0	0.0	0.0	-152.48	-42.6	-22.2	48.0					
100.0	100.0	100.0	100.0	0.1	0.1	-152.48	-42.6	-22.2	48.0	47.7	0.25	188.452		
200.0	200.0	200.0	200.0	0.3	0.3	-152.48	-42.6	-22.2	48.0	47.4	0.60	79.489 CC, ES		
300.0	300.0	298.9	298.9	0.5	0.5	-155.23	-44.5	-20.6	49.1	48.1	0.95	51.596		
400.0	400.0	397.3	397.0	0.7	0.7	141.30	-50.5	-15.7	55.0	53.6	1.34	41.070		
500.0	499.6	494.5	493.4	0.9	1.0	136.06	-60.1	-7.9	68.1	66.3	1.76	38.625 SF		
600.0	598.8	589.9	587.2	1.1	1.3	132.30	-73.3	2.9	88.3	86.1	2.25	39.183		
700.0	697.1	682.9	677.8	1.5	1.7	129.82	-89.6	16.2	115.2	112.4	2.83	40.749		
800.0	794.3	773.0	764.4	1.9	2.2	128.14	-108.7	31.7	148.4	144.9	3.49	42.502		
900.0	890.2	859.8	846.7	2.5	2.7	126.90	-130.0	49.1	187.6	183.4	4.25	44.152		
1,000.0	984.4	942.9	924.3	3.1	3.3	125.86	-153.2	67.9	232.4	227.3	5.09	45.626		
1,100.0	1,076.8	1,022.2	997.1	3.8	3.9	124.88	-177.7	87.9	282.5	276.4	6.02	46.926		
1,200.0	1,167.6	1,100.0	1,067.1	4.6	4.5	124.86	-204.0	109.3	336.8	329.8	7.03	47.942		
1,300.0	1,258.4	1,171.0	1,129.7	5.4	5.2	124.80	-229.8	130.4	393.4	385.3	8.06	48.830		
1,400.0	1,349.1	1,241.4	1,190.6	6.1	5.8	124.46	-257.3	152.7	452.1	442.9	9.11	49.613		
1,500.0	1,439.9	1,309.2	1,247.9	6.9	6.5	123.94	-285.3	175.6	512.7	502.5	10.17	50.396		
1,600.0	1,530.6	1,374.3	1,301.7	7.7	7.2	123.31	-313.7	198.7	575.3	564.0	11.25	51.138		
1,700.0	1,621.4	1,436.7	1,352.1	8.5	7.9	122.64	-342.3	222.0	639.7	627.4	12.33	51.897		
1,800.0	1,712.1	1,500.0	1,401.9	9.3	8.7	121.90	-372.6	246.6	705.9	692.5	13.42	52.603		
1,900.0	1,802.8	1,556.7	1,445.5	10.1	9.4	121.20	-400.7	269.6	773.7	759.2	14.48	53.437		
2,000.0	1,893.6	1,629.2	1,500.8	10.9	10.2	120.41	-437.1	299.1	842.2	826.5	15.64	53.841		
2,100.0	1,984.3	1,701.6	1,556.0	11.7	11.1	119.72	-473.4	328.7	910.7	893.9	16.80	54.203		
2,200.0	2,075.1	1,774.1	1,611.3	12.5	12.0	119.14	-509.7	358.3	979.2	961.3	17.96	54.525		
2,300.0	2,165.8	1,846.5	1,666.5	13.3	12.9	118.63	-546.0	387.9	1,047.9	1,028.8	19.12	54.815		
2,400.0	2,256.6	1,918.9	1,721.8	14.1	13.8	118.18	-582.3	417.5	1,116.5	1,096.3	20.27	55.077		
2,500.0	2,347.3	1,991.4	1,777.0	14.9	14.7	117.78	-618.7	447.1	1,185.2	1,163.8	21.43	55.315		
2,600.0	2,438.1	2,063.8	1,832.3	15.6	15.5	117.43	-655.0	476.7	1,253.9	1,231.4	22.58	55.532		
2,700.0	2,528.8	2,136.3	1,887.5	16.4	16.4	117.12	-691.3	506.2	1,322.7	1,299.0	23.73	55.730		

Cathedral Energy Services

Anticollision Report

Company:	Caerus Oil & Gas (NAD 27)	Local Co-ordinate Reference:	Well Nolte 13D-13
Project:	Garfield County, CO	TVD Reference:	WELL @ 5117.8ft (Original Well Elev)
Reference Site:	S14-T7S-R96W	MD Reference:	WELL @ 5117.8ft (Original Well Elev)
Site Error:	0.0ft	North Reference:	True
Reference Well:	Nolte 13D-13	Survey Calculation Method:	Minimum Curvature
Well Error:	0.0ft	Output errors are at	2.00 sigma
Reference Wellbore	DD	Database:	USA EDM 5000 Multi Users DB
Reference Design:	Plan #3	Offset TVD Reference:	Offset Datum

Offset Design S14-T7S-R96W - Nolte 11C-24 - DD - Plan #3												Offset Site Error:	0.0 ft
Survey Program: 0-MWD												Offset Well Error:	0.0 ft
Reference		Offset		Semi Major Axis			Distance						Warning
Measured Depth (ft)	Vertical Depth (ft)	Measured Depth (ft)	Vertical Depth (ft)	Reference (ft)	Offset (ft)	Highside Toolface (°)	Offset Wellbore Centre +N/-S (ft)	+E/-W (ft)	Between Centres (ft)	Between Ellipses (ft)	Total Uncertainty Axis	Separation Factor	
0.0	0.0	0.0	0.0	0.0	0.0	-152.47	-49.6	-25.9	56.8				
100.0	100.0	90.3	90.3	0.1	0.1	-152.47	-49.6	-25.9	56.0	55.7	0.26	217.228	
200.0	200.0	190.3	190.3	0.3	0.3	-152.47	-49.6	-25.9	56.0	55.4	0.60	92.698	
244.4	244.4	234.7	234.7	0.4	0.4	-152.47	-49.6	-25.9	56.0	55.2	0.76	73.772	CC, ES
300.0	300.0	289.7	289.7	0.5	0.5	-152.84	-50.0	-25.6	56.2	55.2	0.95	59.014	
400.0	400.0	388.1	388.0	0.7	0.7	146.88	-53.8	-23.1	60.8	59.4	1.31	46.348	
500.0	499.6	485.4	484.8	0.9	0.9	143.55	-61.7	-17.8	72.6	70.8	1.71	42.550	
600.0	598.8	581.1	579.4	1.1	1.2	140.51	-73.4	-10.0	91.5	89.4	2.16	42.444	SF
700.0	697.1	674.4	670.9	1.5	1.5	138.09	-88.7	0.2	117.6	114.9	2.68	43.822	
800.0	794.3	764.8	758.6	1.9	1.9	136.21	-107.0	12.5	150.3	147.0	3.29	45.664	
900.0	890.2	851.7	841.8	2.5	2.4	134.69	-127.8	26.4	189.4	185.4	3.98	47.537	
1,000.0	984.4	934.9	920.3	3.1	2.9	133.37	-150.6	41.7	234.5	229.8	4.76	49.283	
1,100.0	1,076.8	1,013.9	993.7	3.8	3.5	132.14	-175.0	57.9	285.2	279.6	5.61	50.859	
1,200.0	1,167.6	1,089.2	1,062.4	4.6	4.0	131.83	-200.5	75.0	340.5	333.9	6.53	52.174	
1,300.0	1,258.4	1,161.8	1,127.5	5.4	4.6	131.55	-227.1	92.8	397.9	390.4	7.49	53.149	
1,400.0	1,349.1	1,231.7	1,189.0	6.1	5.3	131.04	-254.8	111.3	457.4	448.9	8.47	54.026	
1,500.0	1,439.9	1,300.0	1,247.9	6.9	5.9	130.38	-283.6	130.6	518.8	509.3	9.46	54.822	
1,600.0	1,530.6	1,363.4	1,301.4	7.7	6.6	129.67	-311.8	149.5	582.1	571.6	10.47	55.602	
1,700.0	1,621.4	1,425.2	1,352.4	8.5	7.2	128.93	-340.8	168.8	647.2	635.8	11.48	56.375	
1,800.0	1,712.1	1,484.3	1,400.2	9.3	7.9	128.17	-369.8	188.2	714.1	701.6	12.49	57.153	
1,900.0	1,802.8	1,540.9	1,444.8	10.1	8.5	127.43	-398.7	207.5	782.6	769.1	13.51	57.924	
2,000.0	1,893.6	1,600.0	1,490.4	10.9	9.2	126.63	-430.0	228.5	852.7	838.2	14.55	58.605	
2,100.0	1,984.3	1,646.7	1,525.5	11.7	9.8	126.00	-455.6	245.6	924.3	908.8	15.53	59.531	
2,200.0	2,075.1	1,700.0	1,564.7	12.5	10.5	125.27	-485.6	265.7	997.4	980.8	16.55	60.269	
2,300.0	2,165.8	1,743.0	1,595.5	13.3	11.1	124.69	-510.6	282.3	1,071.8	1,054.3	17.52	61.186	
2,400.0	2,256.6	1,800.0	1,635.4	14.1	11.9	123.91	-544.4	305.0	1,147.6	1,129.0	18.58	61.760	
2,500.0	2,347.3	1,830.8	1,656.4	14.9	12.3	123.49	-563.1	317.5	1,224.3	1,204.9	19.47	62.872	
2,600.0	2,438.1	1,871.7	1,683.8	15.6	12.9	122.94	-588.4	334.4	1,302.4	1,281.9	20.44	63.719	

Cathedral Energy Services

Anticollision Report

Company:	Caerus Oil & Gas (NAD 27)	Local Co-ordinate Reference:	Well Nolte 13D-13
Project:	Garfield County, CO	TVD Reference:	WELL @ 5117.8ft (Original Well Elev)
Reference Site:	S14-T7S-R96W	MD Reference:	WELL @ 5117.8ft (Original Well Elev)
Site Error:	0.0ft	North Reference:	True
Reference Well:	Nolte 13D-13	Survey Calculation Method:	Minimum Curvature
Well Error:	0.0ft	Output errors are at	2.00 sigma
Reference Wellbore	DD	Database:	USA EDM 5000 Multi Users DB
Reference Design:	Plan #3	Offset TVD Reference:	Offset Datum

Offset Design S14-T7S-R96W - Nolte 13A-13 - DD - Plan #3														Offset Site Error:	0.0 ft
Survey Program: 0-MWD														Offset Well Error:	0.0 ft
Reference		Offset		Semi Major Axis			Distance				Total		Warning		
Measured Depth (ft)	Vertical Depth (ft)	Measured Depth (ft)	Vertical Depth (ft)	Reference (ft)	Offset (ft)	Highside Toolface (°)	Offset Wellbore Centre +N/-S (ft)	+E/-W (ft)	Between Centres (ft)	Between Ellipses (ft)	Uncertainty Axis	Separation Factor			
0.0	0.0	0.0	0.0	0.0	0.0	-23.80	11.7	-5.2	12.8						
100.0	100.0	100.0	100.0	0.1	0.1	-23.80	11.7	-5.2	12.8	12.6	0.25	50.331			
200.0	200.0	200.0	200.0	0.3	0.3	-23.80	11.7	-5.2	12.8	12.2	0.60	21.221 CC, ES			
300.0	300.0	299.5	299.5	0.5	0.5	-15.30	13.9	-3.8	14.4	13.5	0.96	15.052			
400.0	400.0	398.7	398.4	0.7	0.7	-63.35	20.5	0.2	19.3	18.0	1.33	14.551			
500.0	499.6	497.5	496.3	0.9	1.0	-61.30	31.4	6.9	26.1	24.4	1.74	15.015			
600.0	598.8	595.9	593.1	1.1	1.3	-62.68	46.5	16.3	34.6	32.4	2.24	15.448			
700.0	697.1	693.8	688.3	1.5	1.8	-65.31	65.8	28.1	44.9	42.0	2.88	15.579			
800.0	794.3	791.1	781.7	1.9	2.3	-68.23	89.0	42.4	57.1	53.4	3.70	15.434			
900.0	890.2	887.7	872.9	2.5	2.9	-71.01	116.0	59.0	71.1	66.4	4.70	15.139			
1,000.0	984.4	983.7	961.9	3.1	3.6	-73.49	146.8	77.9	87.1	81.2	5.89	14.796			
1,100.0	1,076.8	1,078.9	1,048.2	3.8	4.3	-75.64	181.0	98.9	105.1	97.8	7.26	14.465			
1,200.0	1,167.6	1,173.4	1,131.8	4.6	5.2	-77.31	218.5	122.0	125.2	116.5	8.75	14.322 SF			
1,300.0	1,258.4	1,266.8	1,212.2	5.4	6.0	-77.20	259.0	146.9	148.2	138.0	10.20	14.534			
1,400.0	1,349.1	1,358.7	1,288.9	6.1	7.0	-75.89	302.0	173.4	174.1	162.4	11.60	15.002			
1,500.0	1,439.9	1,448.8	1,361.7	6.9	8.0	-73.93	347.2	201.2	202.8	189.9	12.94	15.676			
1,600.0	1,530.6	1,536.6	1,430.1	7.7	9.0	-71.66	394.1	230.0	234.6	220.5	14.19	16.531			
1,700.0	1,621.4	1,622.0	1,494.2	8.5	10.1	-69.30	442.2	259.6	269.7	254.4	15.36	17.558			
1,800.0	1,712.1	1,711.4	1,559.3	9.3	11.2	-66.95	494.4	291.7	307.4	290.9	16.48	18.648			
1,900.0	1,802.8	1,803.3	1,626.1	10.1	12.4	-65.03	548.2	324.8	345.6	328.0	17.61	19.625			
2,000.0	1,893.6	1,895.2	1,692.8	10.9	13.6	-63.49	601.9	357.9	384.0	365.3	18.73	20.500			
2,100.0	1,984.3	1,987.1	1,759.6	11.7	14.7	-62.23	655.7	391.0	422.7	402.8	19.86	21.284			
2,200.0	2,075.1	2,078.9	1,826.3	12.5	15.9	-61.18	709.5	424.0	461.4	440.4	20.98	21.990			
2,300.0	2,165.8	2,170.8	1,893.1	13.3	17.1	-60.30	763.2	457.1	500.3	478.2	22.11	22.627			
2,400.0	2,256.6	2,262.7	1,959.8	14.1	18.3	-59.54	817.0	490.2	539.3	516.1	23.24	23.205			
2,500.0	2,347.3	2,354.5	2,026.6	14.9	19.4	-58.88	870.7	523.2	578.4	554.0	24.37	23.731			
2,600.0	2,438.1	2,446.4	2,093.3	15.6	20.6	-58.30	924.5	556.3	617.5	592.0	25.50	24.211			
2,700.0	2,528.8	2,538.3	2,160.1	16.4	21.8	-57.80	978.3	589.4	656.6	630.0	26.64	24.650			
2,800.0	2,619.5	2,630.1	2,226.9	17.2	23.0	-57.35	1,032.0	622.4	695.8	668.0	27.77	25.055			
2,900.0	2,710.3	2,722.0	2,293.6	18.0	24.2	-56.95	1,085.8	655.5	735.0	706.1	28.91	25.427			
3,000.0	2,801.0	2,813.9	2,360.4	18.8	25.3	-56.58	1,139.6	688.6	774.3	744.2	30.04	25.772			
3,100.0	2,891.8	2,924.0	2,440.9	19.6	26.7	-56.38	1,203.6	728.0	813.2	781.9	31.33	25.954			
3,200.0	2,983.9	3,070.2	2,553.4	20.3	28.4	-56.94	1,283.0	776.8	849.3	816.3	33.00	25.736			
3,300.0	3,078.0	3,222.2	2,677.6	20.9	29.9	-57.41	1,357.6	822.7	881.9	847.4	34.50	25.562			
3,400.0	3,173.6	3,379.8	2,813.3	21.4	31.3	-57.77	1,425.7	864.6	910.8	875.0	35.82	25.428			
3,500.0	3,270.7	3,542.7	2,960.0	21.8	32.6	-58.04	1,486.0	901.7	935.6	898.7	36.93	25.333			
3,600.0	3,368.9	3,710.4	3,116.7	22.1	33.6	-58.22	1,536.6	932.8	956.1	918.2	37.84	25.268			
3,700.0	3,468.0	3,882.2	3,282.1	22.4	34.4	-58.32	1,576.1	957.1	971.9	933.4	38.51	25.238			
3,800.0	3,567.6	4,057.2	3,454.1	22.5	34.9	-58.34	1,603.2	973.8	982.9	943.9	38.95	25.236			
3,900.0	3,667.5	4,234.4	3,630.5	22.6	35.1	-58.28	1,616.9	982.2	988.8	949.7	39.15	25.258			
4,000.0	3,767.5	4,371.4	3,767.5	22.6	35.2	-0.57	1,618.5	983.2	989.7	950.4	39.27	25.200			
4,100.0	3,867.5	4,471.4	3,867.5	22.7	35.2	-0.57	1,618.5	983.2	989.7	950.3	39.40	25.117			
4,200.0	3,967.5	4,571.4	3,967.5	22.7	35.3	-0.57	1,618.5	983.2	989.7	950.1	39.54	25.032			
4,300.0	4,067.5	4,671.4	4,067.5	22.8	35.3	-0.57	1,618.5	983.2	989.7	950.0	39.67	24.947			
4,400.0	4,167.5	4,771.4	4,167.5	22.9	35.3	-0.57	1,618.5	983.2	989.7	949.9	39.81	24.860			
4,500.0	4,267.5	4,871.4	4,267.5	22.9	35.4	-0.57	1,618.5	983.2	989.7	949.7	39.95	24.773			
4,600.0	4,367.5	4,971.4	4,367.5	23.0	35.4	-0.57	1,618.5	983.2	989.7	949.6	40.09	24.684			
4,700.0	4,467.5	5,071.4	4,467.5	23.0	35.5	-0.57	1,618.5	983.2	989.7	949.4	40.24	24.595			
4,800.0	4,567.5	5,171.4	4,567.5	23.1	35.5	-0.57	1,618.5	983.2	989.7	949.3	40.39	24.504			
4,900.0	4,667.5	5,271.4	4,667.5	23.2	35.6	-0.57	1,618.5	983.2	989.7	949.1	40.54	24.413			
5,000.0	4,767.5	5,371.4	4,767.5	23.2	35.6	-0.57	1,618.5	983.2	989.7	949.0	40.69	24.321			
5,100.0	4,867.5	5,471.4	4,867.5	23.3	35.6	-0.57	1,618.5	983.2	989.7	948.8	40.85	24.229			

CC - Min centre to center distance or convergent point, SF - min separation factor, ES - min ellipse separation

Cathedral Energy Services

Anticollision Report

Company:	Caerus Oil & Gas (NAD 27)	Local Co-ordinate Reference:	Well Nolte 13D-13
Project:	Garfield County, CO	TVD Reference:	WELL @ 5117.8ft (Original Well Elev)
Reference Site:	S14-T7S-R96W	MD Reference:	WELL @ 5117.8ft (Original Well Elev)
Site Error:	0.0ft	North Reference:	True
Reference Well:	Nolte 13D-13	Survey Calculation Method:	Minimum Curvature
Well Error:	0.0ft	Output errors are at	2.00 sigma
Reference Wellbore	DD	Database:	USA EDM 5000 Multi Users DB
Reference Design:	Plan #3	Offset TVD Reference:	Offset Datum

Offset Design S14-T7S-R96W - Nolte 13A-13 - DD - Plan #3													Offset Site Error:	0.0 ft
Survey Program: 0-MWD													Offset Well Error:	0.0 ft
Reference		Offset		Semi Major Axis			Distance						Warning	
Measured Depth (ft)	Vertical Depth (ft)	Measured Depth (ft)	Vertical Depth (ft)	Reference (ft)	Offset (ft)	Highside Toolface (°)	Offset Wellbore Centre +N/-S (ft)	+E/-W (ft)	Between Centres (ft)	Between Ellipses (ft)	Total Uncertainty Axis	Separation Factor		
5,200.0	4,967.5	5,571.4	4,967.5	23.4	35.7	-0.57	1,618.5	983.2	989.7	948.7	41.01	24.135		
5,300.0	5,067.5	5,671.4	5,067.5	23.4	35.7	-0.57	1,618.5	983.2	989.7	948.5	41.17	24.041		
5,400.0	5,167.5	5,771.4	5,167.5	23.5	35.8	-0.57	1,618.5	983.2	989.7	948.4	41.33	23.946		
5,500.0	5,267.5	5,871.4	5,267.5	23.6	35.8	-0.57	1,618.5	983.2	989.7	948.2	41.49	23.851		
5,600.0	5,367.5	5,971.4	5,367.5	23.6	35.9	-0.57	1,618.5	983.2	989.7	948.0	41.66	23.755		
5,700.0	5,467.5	6,071.4	5,467.5	23.7	35.9	-0.57	1,618.5	983.2	989.7	947.9	41.83	23.659		
5,800.0	5,567.5	6,171.4	5,567.5	23.8	36.0	-0.57	1,618.5	983.2	989.7	947.7	42.00	23.562		
5,900.0	5,667.5	6,271.4	5,667.5	23.9	36.0	-0.57	1,618.5	983.2	989.7	947.5	42.18	23.465		
6,000.0	5,767.5	6,371.4	5,767.5	23.9	36.1	-0.57	1,618.5	983.2	989.7	947.3	42.35	23.368		
6,100.0	5,867.5	6,471.4	5,867.5	24.0	36.1	-0.57	1,618.5	983.2	989.7	947.2	42.53	23.270		
6,122.5	5,890.0	6,493.9	5,890.0	24.0	36.2	-0.57	1,618.5	983.2	989.7	947.1	42.57	23.248		

Cathedral Energy Services

Anticollision Report

Company:	Caerus Oil & Gas (NAD 27)	Local Co-ordinate Reference:	Well Nolte 13D-13
Project:	Garfield County, CO	TVD Reference:	WELL @ 5117.8ft (Original Well Elev)
Reference Site:	S14-T7S-R96W	MD Reference:	WELL @ 5117.8ft (Original Well Elev)
Site Error:	0.0ft	North Reference:	True
Reference Well:	Nolte 13D-13	Survey Calculation Method:	Minimum Curvature
Well Error:	0.0ft	Output errors are at	2.00 sigma
Reference Wellbore	DD	Database:	USA EDM 5000 Multi Users DB
Reference Design:	Plan #3	Offset TVD Reference:	Offset Datum

Offset Design S14-T7S-R96W - Nolte 13B-13 - DD - Plan #3													Offset Site Error:	0.0 ft
Survey Program: 0-MWD													Offset Well Error:	0.0 ft
Reference		Offset		Semi Major Axis			Distance				Total Uncertainty Axis	Separation Factor	Warning	
Measured Depth (ft)	Vertical Depth (ft)	Measured Depth (ft)	Vertical Depth (ft)	Reference (ft)	Offset (ft)	Highside Toolface (°)	Offset Wellbore Centre +N/-S (ft)	+E/-W (ft)	Between Centres (ft)	Between Ellipses (ft)				
0.0	0.0	0.0	0.0	0.0	0.0	-62.45	4.6	-8.9	10.0					
100.0	100.0	100.0	100.0	0.1	0.1	-62.45	4.6	-8.9	10.0	9.7	0.25	39.338		
200.0	200.0	200.0	200.0	0.3	0.3	-62.45	4.6	-8.9	10.0	9.4	0.60	16.580		
300.0	300.0	300.0	300.0	0.5	0.5	-58.72	5.1	-8.5	9.9	9.0	0.95	10.401		
312.1	312.1	312.2	312.2	0.5	0.5	-114.52	5.4	-8.2	9.9	8.9	1.00	9.915 CC, ES		
400.0	400.0	400.0	399.8	0.7	0.7	-101.10	9.3	-5.3	10.9	9.5	1.33	8.187		
500.0	499.6	499.7	499.0	0.9	0.9	-90.33	17.5	1.1	14.2	12.4	1.77	8.020 SF		
600.0	598.8	599.2	597.3	1.1	1.2	-85.23	29.8	10.6	19.6	17.3	2.33	8.416		
700.0	697.1	698.5	694.4	1.5	1.6	-83.43	46.0	23.2	26.7	23.7	3.03	8.835		
800.0	794.3	797.4	789.9	1.9	2.1	-83.18	66.2	38.9	35.6	31.7	3.89	9.135		
900.0	890.2	895.9	883.7	2.5	2.7	-83.59	90.1	57.4	46.0	41.1	4.94	9.317		
1,000.0	984.4	994.1	975.4	3.1	3.3	-84.24	117.7	78.8	58.1	51.9	6.17	9.415		
1,100.0	1,076.8	1,091.8	1,064.8	3.8	4.1	-84.93	148.9	103.0	71.7	64.2	7.58	9.459		
1,200.0	1,167.6	1,189.0	1,151.7	4.6	4.9	-85.03	183.4	129.7	87.0	77.9	9.10	9.566		
1,300.0	1,258.4	1,285.5	1,235.5	5.4	5.8	-82.78	221.1	158.9	104.4	93.8	10.60	9.849		
1,400.0	1,349.1	1,380.7	1,315.8	6.1	6.8	-79.17	261.5	190.3	124.1	112.1	12.02	10.322		
1,500.0	1,439.9	1,474.5	1,392.3	6.9	7.8	-74.98	304.4	223.5	146.8	133.4	13.32	11.016		
1,600.0	1,530.6	1,570.9	1,469.8	7.7	8.8	-71.26	349.7	258.6	171.2	156.6	14.55	11.767		
1,700.0	1,621.4	1,667.4	1,547.3	8.5	9.9	-68.47	395.0	293.8	196.1	180.4	15.75	12.450		
1,800.0	1,712.1	1,763.8	1,624.9	9.3	11.0	-66.30	440.4	328.9	221.4	204.5	16.95	13.063		
1,900.0	1,802.8	1,860.3	1,702.4	10.1	12.0	-64.58	485.7	364.1	246.9	228.8	18.14	13.612		
2,000.0	1,893.6	1,956.7	1,779.9	10.9	13.1	-63.19	531.1	399.2	272.6	253.3	19.33	14.103		
2,100.0	1,984.3	2,053.2	1,857.5	11.7	14.2	-62.03	576.4	434.4	298.4	277.9	20.52	14.544		
2,200.0	2,075.1	2,149.6	1,935.0	12.5	15.3	-61.05	621.8	469.5	324.3	302.6	21.71	14.941		
2,300.0	2,165.8	2,246.1	2,012.5	13.3	16.3	-60.22	667.1	504.7	350.3	327.4	22.90	15.299		
2,400.0	2,256.6	2,342.5	2,090.1	14.1	17.4	-59.51	712.4	539.9	376.4	352.3	24.09	15.624		
2,500.0	2,347.3	2,439.0	2,167.6	14.9	18.5	-58.89	757.8	575.0	402.5	377.2	25.28	15.920		
2,600.0	2,438.1	2,535.4	2,245.1	15.6	19.6	-58.34	803.1	610.2	428.6	402.1	26.47	16.190		
2,700.0	2,528.8	2,631.8	2,322.6	16.4	20.6	-57.85	848.5	645.3	454.8	427.1	27.67	16.438		
2,800.0	2,619.5	2,728.3	2,400.2	17.2	21.7	-57.42	893.8	680.5	481.0	452.1	28.86	16.665		
2,900.0	2,710.3	2,824.7	2,477.7	18.0	22.8	-57.04	939.2	715.6	507.2	477.1	30.05	16.875		
3,000.0	2,801.0	2,921.2	2,555.2	18.8	23.9	-56.69	984.5	750.8	533.4	502.2	31.25	17.070		
3,100.0	2,891.8	3,014.0	2,653.1	19.6	25.1	-56.57	1,039.0	793.0	558.0	525.4	32.63	17.101		
3,200.0	2,983.9	3,168.1	2,761.4	20.3	26.3	-57.06	1,091.5	833.7	579.6	545.4	34.11	16.989		
3,300.0	3,078.0	3,297.2	2,875.7	20.9	27.3	-57.47	1,138.9	870.5	598.8	563.3	35.42	16.904		
3,400.0	3,173.6	3,428.2	2,995.6	21.4	28.3	-57.79	1,180.6	902.8	615.5	579.0	36.54	16.848		
3,500.0	3,270.7	3,560.9	3,120.4	21.8	29.0	-58.03	1,216.2	930.3	629.8	592.3	37.46	16.811		
3,600.0	3,368.9	3,695.0	3,249.5	22.1	29.6	-58.20	1,245.0	952.7	641.3	603.1	38.20	16.789		
3,700.0	3,468.0	3,830.4	3,382.0	22.4	30.1	-58.29	1,266.9	969.7	650.2	611.4	38.73	16.787		
3,800.0	3,567.6	3,966.7	3,517.0	22.5	30.4	-58.31	1,281.3	980.8	656.2	617.1	39.07	16.796		
3,900.0	3,667.5	4,103.6	3,653.6	22.6	30.5	-58.26	1,288.1	986.1	659.4	620.2	39.22	16.813		
4,000.0	3,767.5	4,217.5	3,767.5	22.6	30.6	-0.57	1,288.6	986.5	659.8	620.5	39.34	16.774		
4,100.0	3,867.5	4,317.5	3,867.5	22.7	30.6	-0.57	1,288.6	986.5	659.8	620.3	39.46	16.719		
4,200.0	3,967.5	4,417.5	3,967.5	22.7	30.7	-0.57	1,288.6	986.5	659.8	620.2	39.59	16.664		
4,300.0	4,067.5	4,517.5	4,067.5	22.8	30.7	-0.57	1,288.6	986.5	659.8	620.1	39.73	16.608		
4,400.0	4,167.5	4,617.5	4,167.5	22.9	30.8	-0.57	1,288.6	986.5	659.8	619.9	39.86	16.552		
4,500.0	4,267.5	4,717.5	4,267.5	22.9	30.8	-0.57	1,288.6	986.5	659.8	619.8	40.00	16.495		
4,600.0	4,367.5	4,817.5	4,367.5	23.0	30.8	-0.57	1,288.6	986.5	659.8	619.6	40.14	16.437		
4,700.0	4,467.5	4,917.5	4,467.5	23.0	30.9	-0.57	1,288.6	986.5	659.8	619.5	40.28	16.378		
4,800.0	4,567.5	5,017.5	4,567.5	23.1	30.9	-0.57	1,288.6	986.5	659.8	619.4	40.43	16.319		
4,900.0	4,667.5	5,117.5	4,667.5	23.2	31.0	-0.57	1,288.6	986.5	659.8	619.2	40.58	16.260		
5,000.0	4,767.5	5,217.5	4,767.5	23.2	31.0	-0.57	1,288.6	986.5	659.8	619.1	40.73	16.199		

CC - Min centre to center distance or convergent point, SF - min separation factor, ES - min ellipse separation

Cathedral Energy Services

Anticollision Report

Company:	Caerus Oil & Gas (NAD 27)	Local Co-ordinate Reference:	Well Nolte 13D-13
Project:	Garfield County, CO	TVD Reference:	WELL @ 5117.8ft (Original Well Elev)
Reference Site:	S14-T7S-R96W	MD Reference:	WELL @ 5117.8ft (Original Well Elev)
Site Error:	0.0ft	North Reference:	True
Reference Well:	Nolte 13D-13	Survey Calculation Method:	Minimum Curvature
Well Error:	0.0ft	Output errors are at	2.00 sigma
Reference Wellbore	DD	Database:	USA EDM 5000 Multi Users DB
Reference Design:	Plan #3	Offset TVD Reference:	Offset Datum

Offset Design S14-T7S-R96W - Nolte 13B-13 - DD - Plan #3													Offset Site Error:	0.0 ft
Survey Program: 0-MWD													Offset Well Error:	0.0 ft
Reference		Offset		Semi Major Axis			Distance						Warning	
Measured Depth (ft)	Vertical Depth (ft)	Measured Depth (ft)	Vertical Depth (ft)	Reference (ft)	Offset (ft)	Highside Toolface (°)	Offset Wellbore Centre +N/-S (ft)	+E/-W (ft)	Between Centres (ft)	Between Ellipses (ft)	Total Uncertainty Axis	Separation Factor		
5,100.0	4,867.5	5,317.5	4,867.5	23.3	31.1	-0.57	1,288.6	986.5	659.8	618.9	40.88	16.139		
5,200.0	4,967.5	5,417.5	4,967.5	23.4	31.1	-0.57	1,288.6	986.5	659.8	618.8	41.04	16.077		
5,300.0	5,067.5	5,517.5	5,067.5	23.4	31.2	-0.57	1,288.6	986.5	659.8	618.6	41.20	16.016		
5,400.0	5,167.5	5,617.5	5,167.5	23.5	31.3	-0.57	1,288.6	986.5	659.8	618.4	41.36	15.954		
5,500.0	5,267.5	5,717.5	5,267.5	23.6	31.3	-0.57	1,288.6	986.5	659.8	618.3	41.52	15.891		
5,600.0	5,367.5	5,817.5	5,367.5	23.6	31.4	-0.57	1,288.6	986.5	659.8	618.1	41.68	15.828		
5,700.0	5,467.5	5,917.5	5,467.5	23.7	31.4	-0.57	1,288.6	986.5	659.8	617.9	41.85	15.765		
5,800.0	5,567.5	6,017.5	5,567.5	23.8	31.5	-0.57	1,288.6	986.5	659.8	617.8	42.02	15.702		
5,900.0	5,667.5	6,117.5	5,667.5	23.9	31.5	-0.57	1,288.6	986.5	659.8	617.6	42.19	15.638		
6,000.0	5,767.5	6,217.5	5,767.5	23.9	31.6	-0.57	1,288.6	986.5	659.8	617.4	42.37	15.573		
6,100.0	5,867.5	6,317.5	5,867.5	24.0	31.7	-0.57	1,288.6	986.5	659.8	617.2	42.54	15.509		
6,122.5	5,890.0	6,340.0	5,890.0	24.0	31.7	-0.57	1,288.6	986.5	659.8	617.2	42.58	15.495		

Cathedral Energy Services

Anticollision Report

Company:	Caerus Oil & Gas (NAD 27)	Local Co-ordinate Reference:	Well Nolte 13D-13
Project:	Garfield County, CO	TVD Reference:	WELL @ 5117.8ft (Original Well Elev)
Reference Site:	S14-T7S-R96W	MD Reference:	WELL @ 5117.8ft (Original Well Elev)
Site Error:	0.0ft	North Reference:	True
Reference Well:	Nolte 13D-13	Survey Calculation Method:	Minimum Curvature
Well Error:	0.0ft	Output errors are at	2.00 sigma
Reference Wellbore	DD	Database:	USA EDM 5000 Multi Users DB
Reference Design:	Plan #3	Offset TVD Reference:	Offset Datum

Offset Design S14-T7S-R96W - Nolte 13C-13 - DD - Plan #3														Offset Site Error:	0.0 ft
Survey Program: 0-MWD														Offset Well Error:	0.0 ft
Reference		Offset		Semi Major Axis			Distance				Total		Warning		
Measured Depth (ft)	Vertical Depth (ft)	Measured Depth (ft)	Vertical Depth (ft)	Reference (ft)	Offset (ft)	Highside Toolface (°)	Offset Wellbore Centre +N/-S (ft)	+E/-W (ft)	Between Centres (ft)	Between Ellipses (ft)	Uncertainty Axis	Separation Factor			
0.0	0.0	0.0	0.0	0.0	0.0	27.56	7.1	3.7	8.0						
100.0	100.0	99.8	99.8	0.1	0.1	27.56	7.1	3.7	8.0	7.7	0.25	31.530			
200.0	200.0	199.8	199.8	0.3	0.3	27.56	7.1	3.7	8.0	7.4	0.60	13.272 CC, ES			
300.0	300.0	299.3	299.3	0.5	0.5	32.03	8.9	5.6	10.5	9.5	0.96	10.945			
400.0	400.0	398.5	398.2	0.7	0.7	-22.84	14.2	11.1	15.7	14.4	1.30	12.076			
500.0	499.6	497.4	496.2	0.9	1.0	-24.17	23.1	20.3	21.2	19.6	1.66	12.781			
600.0	598.8	596.0	593.2	1.1	1.3	-27.04	35.5	33.1	27.0	25.0	2.05	13.199			
700.0	697.1	694.4	688.9	1.5	1.8	-30.53	51.3	49.5	33.2	30.7	2.50	13.287			
800.0	794.3	792.4	782.9	1.9	2.3	-34.21	70.4	69.3	39.9	36.9	3.07	13.008			
900.0	890.2	890.0	875.1	2.5	2.9	-37.88	92.7	92.4	47.2	43.4	3.80	12.415			
1,000.0	984.4	987.4	965.3	3.1	3.6	-41.41	118.2	118.8	55.1	50.3	4.73	11.635			
1,100.0	1,076.8	1,084.4	1,053.1	3.8	4.4	-44.74	146.8	148.4	63.6	57.7	5.89	10.805			
1,200.0	1,167.6	1,181.9	1,139.4	4.6	5.3	-47.34	178.4	181.2	73.6	66.4	7.17	10.267			
1,300.0	1,258.4	1,281.3	1,226.6	5.4	6.1	-48.99	211.4	215.4	84.5	76.0	8.46	9.980			
1,400.0	1,349.1	1,380.7	1,313.9	6.1	7.0	-50.26	244.4	249.6	95.5	85.7	9.79	9.754			
1,500.0	1,439.9	1,480.1	1,401.2	6.9	7.9	-51.27	277.4	283.8	106.5	95.3	11.12	9.571			
1,600.0	1,530.6	1,579.4	1,488.5	7.7	8.8	-52.09	310.4	318.0	117.5	105.0	12.47	9.423			
1,700.0	1,621.4	1,678.8	1,575.8	8.5	9.7	-52.76	343.4	352.1	128.5	114.7	13.82	9.300			
1,800.0	1,712.1	1,778.2	1,663.1	9.3	10.6	-53.34	376.4	386.3	139.6	124.4	15.18	9.197			
1,900.0	1,802.8	1,877.6	1,750.4	10.1	11.4	-53.82	409.3	420.5	150.7	134.1	16.54	9.109			
2,000.0	1,893.6	1,976.9	1,837.6	10.9	12.3	-54.24	442.3	454.7	161.8	143.9	17.91	9.033			
2,100.0	1,984.3	2,076.3	1,924.9	11.7	13.2	-54.61	475.3	488.9	172.9	153.6	19.27	8.968			
2,200.0	2,075.1	2,175.7	2,012.2	12.5	14.1	-54.93	508.3	523.1	183.9	163.3	20.64	8.911			
2,300.0	2,165.8	2,275.1	2,099.5	13.3	15.0	-55.22	541.3	557.3	195.1	173.0	22.01	8.860			
2,400.0	2,256.6	2,374.5	2,186.8	14.1	15.9	-55.47	574.3	591.4	206.2	182.8	23.39	8.815			
2,500.0	2,347.3	2,473.8	2,274.1	14.9	16.8	-55.70	607.3	625.6	217.3	192.5	24.76	8.775			
2,600.0	2,438.1	2,573.2	2,361.4	15.6	17.7	-55.91	640.3	659.8	228.4	202.3	26.13	8.739			
2,700.0	2,528.8	2,672.6	2,448.6	16.4	18.6	-56.09	673.3	694.0	239.5	212.0	27.51	8.706			
2,800.0	2,619.5	2,772.0	2,535.9	17.2	19.5	-56.27	706.3	728.2	250.6	221.7	28.88	8.677			
2,900.0	2,710.3	2,871.3	2,623.2	18.0	20.4	-56.42	739.2	762.4	261.7	231.5	30.26	8.650			
3,000.0	2,801.0	2,970.7	2,710.5	18.8	21.3	-56.56	772.2	796.6	272.9	241.2	31.64	8.625			
3,100.0	2,891.8	3,072.8	2,800.2	19.6	22.2	-56.76	806.0	831.6	283.9	250.9	33.04	8.594			
3,200.0	2,983.9	3,183.9	2,900.0	20.3	23.0	-57.19	839.9	866.7	294.0	259.6	34.40	8.546			
3,300.0	3,078.0	3,295.5	3,002.9	20.9	23.8	-57.55	869.9	897.8	302.9	267.3	35.58	8.512			
3,400.0	3,173.6	3,407.6	3,108.6	21.4	24.4	-57.83	895.8	924.6	310.5	274.0	36.58	8.489			
3,500.0	3,270.7	3,520.0	3,216.6	21.8	25.0	-58.04	917.4	946.9	317.0	279.6	37.40	8.475			
3,600.0	3,368.9	3,632.8	3,326.7	22.1	25.4	-58.18	934.5	964.7	322.1	284.1	38.04	8.468			
3,700.0	3,468.0	3,745.9	3,438.3	22.4	25.7	-58.26	947.2	977.8	326.0	287.5	38.51	8.466			
3,800.0	3,567.6	3,859.2	3,551.0	22.5	25.9	-58.29	955.2	986.2	328.6	289.8	38.80	8.469			
3,900.0	3,667.5	3,972.6	3,664.3	22.6	25.9	-58.25	958.6	989.7	329.8	290.9	38.92	8.474			
4,000.0	3,767.5	4,075.7	3,767.3	22.6	26.0	-0.58	958.7	989.8	329.9	290.9	39.04	8.451			
4,100.0	3,867.5	4,175.7	3,867.3	22.7	26.0	-0.58	958.7	989.8	329.9	290.7	39.16	8.423			
4,200.0	3,967.5	4,275.7	3,967.3	22.7	26.1	-0.58	958.7	989.8	329.9	290.6	39.29	8.396			
4,300.0	4,067.5	4,375.7	4,067.3	22.8	26.1	-0.58	958.7	989.8	329.9	290.5	39.43	8.367			
4,400.0	4,167.5	4,475.7	4,167.3	22.9	26.2	-0.58	958.7	989.8	329.9	290.3	39.56	8.339			
4,500.0	4,267.5	4,575.7	4,267.3	22.9	26.2	-0.58	958.7	989.8	329.9	290.2	39.70	8.310			
4,600.0	4,367.5	4,675.7	4,367.3	23.0	26.3	-0.58	958.7	989.8	329.9	290.1	39.84	8.281			
4,700.0	4,467.5	4,775.7	4,467.3	23.0	26.4	-0.58	958.7	989.8	329.9	289.9	39.98	8.252			
4,800.0	4,567.5	4,875.7	4,567.3	23.1	26.4	-0.58	958.7	989.8	329.9	289.8	40.12	8.222			
4,900.0	4,667.5	4,975.7	4,667.3	23.2	26.5	-0.58	958.7	989.8	329.9	289.6	40.27	8.192			
5,000.0	4,767.5	5,075.7	4,767.3	23.2	26.5	-0.58	958.7	989.8	329.9	289.5	40.42	8.161			
5,100.0	4,867.5	5,175.7	4,867.3	23.3	26.6	-0.58	958.7	989.8	329.9	289.3	40.57	8.131			

CC - Min centre to center distance or convergent point, SF - min separation factor, ES - min ellipse separation

Cathedral Energy Services

Anticollision Report

Company:	Caerus Oil & Gas (NAD 27)	Local Co-ordinate Reference:	Well Nolte 13D-13
Project:	Garfield County, CO	TVD Reference:	WELL @ 5117.8ft (Original Well Elev)
Reference Site:	S14-T7S-R96W	MD Reference:	WELL @ 5117.8ft (Original Well Elev)
Site Error:	0.0ft	North Reference:	True
Reference Well:	Nolte 13D-13	Survey Calculation Method:	Minimum Curvature
Well Error:	0.0ft	Output errors are at	2.00 sigma
Reference Wellbore	DD	Database:	USA EDM 5000 Multi Users DB
Reference Design:	Plan #3	Offset TVD Reference:	Offset Datum

Offset Design S14-T7S-R96W - Nolte 13C-13 - DD - Plan #3													Offset Site Error:	0.0 ft
Survey Program: 0-MWD													Offset Well Error:	0.0 ft
Reference		Offset		Semi Major Axis			Distance						Warning	
Measured Depth (ft)	Vertical Depth (ft)	Measured Depth (ft)	Vertical Depth (ft)	Reference (ft)	Offset (ft)	Highside Toolface (°)	Offset Wellbore Centre +N/-S (ft)	+E/-W (ft)	Between Centres (ft)	Between Ellipses (ft)	Total Uncertainty Axis	Separation Factor		
5,200.0	4,967.5	5,275.7	4,967.3	23.4	26.6	-0.58	958.7	989.8	329.9	289.2	40.73	8.100		
5,300.0	5,067.5	5,375.7	5,067.3	23.4	26.7	-0.58	958.7	989.8	329.9	289.0	40.89	8.069		
5,400.0	5,167.5	5,475.7	5,167.3	23.5	26.8	-0.58	958.7	989.8	329.9	288.9	41.05	8.037		
5,500.0	5,267.5	5,575.7	5,267.3	23.6	26.8	-0.58	958.7	989.8	329.9	288.7	41.21	8.006		
5,600.0	5,367.5	5,675.7	5,367.3	23.6	26.9	-0.58	958.7	989.8	329.9	288.5	41.37	7.974		
5,700.0	5,467.5	5,775.7	5,467.3	23.7	27.0	-0.58	958.7	989.8	329.9	288.4	41.54	7.942		
5,800.0	5,567.5	5,875.7	5,567.3	23.8	27.0	-0.58	958.7	989.8	329.9	288.2	41.71	7.910		
5,900.0	5,667.5	5,975.7	5,667.3	23.9	27.1	-0.58	958.7	989.8	329.9	288.0	41.88	7.878		
6,000.0	5,767.5	6,075.7	5,767.3	23.9	27.2	-0.58	958.7	989.8	329.9	287.8	42.05	7.845		
6,100.0	5,867.5	6,175.7	5,867.3	24.0	27.2	-0.58	958.7	989.8	329.9	287.7	42.23	7.813		
6,122.5	5,890.0	6,198.2	5,889.8	24.0	27.2	-0.58	958.7	989.8	329.9	287.6	42.27	7.805 SF		

Cathedral Energy Services

Anticollision Report

Company:	Caerus Oil & Gas (NAD 27)	Local Co-ordinate Reference:	Well Nolte 13D-13
Project:	Garfield County, CO	TVD Reference:	WELL @ 5117.8ft (Original Well Elev)
Reference Site:	S14-T7S-R96W	MD Reference:	WELL @ 5117.8ft (Original Well Elev)
Site Error:	0.0ft	North Reference:	True
Reference Well:	Nolte 13D-13	Survey Calculation Method:	Minimum Curvature
Well Error:	0.0ft	Output errors are at	2.00 sigma
Reference Wellbore	DD	Database:	USA EDM 5000 Multi Users DB
Reference Design:	Plan #3	Offset TVD Reference:	Offset Datum

Offset Design S14-T7S-R96W - Nolte 14A-13 - DD - Plan #3													Offset Site Error:	0.0 ft
Survey Program: 0-MWD													Offset Well Error:	0.0 ft
Reference		Offset		Semi Major Axis			Distance				Total Uncertainty Axis	Separation Factor	Warning	
Measured Depth (ft)	Vertical Depth (ft)	Measured Depth (ft)	Vertical Depth (ft)	Reference (ft)	Offset (ft)	Highside Toolface (°)	Offset Wellbore Centre +N/-S (ft)	+E/-W (ft)	Between Centres (ft)	Between Ellipses (ft)				
0.0	0.0	0.0	0.0	0.0	0.0	-152.44	-7.1	-3.7	8.0					
100.0	100.0	100.0	100.0	0.1	0.1	-152.44	-7.1	-3.7	8.0	7.7	0.25	31.520		
200.0	200.0	200.0	200.0	0.3	0.3	-152.44	-7.1	-3.7	8.0	7.4	0.60	13.269		
300.0	300.0	300.0	300.0	0.5	0.5	-152.44	-7.1	-3.7	8.0	7.0	0.95	8.403 CC, ES		
400.0	400.0	400.0	400.0	0.7	0.7	157.16	-7.1	-3.7	10.3	9.0	1.30	7.953		
500.0	499.6	500.4	500.3	0.9	0.8	162.38	-6.3	-1.2	15.6	13.9	1.65	9.433		
600.0	598.8	601.0	600.6	1.1	1.0	161.45	-4.0	6.4	21.4	19.4	2.02	10.624		
700.0	697.1	701.9	700.6	1.5	1.3	158.28	-0.1	19.1	27.9	25.5	2.43	11.494		
800.0	794.3	802.9	799.9	1.9	1.6	154.28	5.3	36.8	35.1	32.2	2.93	11.977		
900.0	890.2	904.0	898.2	2.5	2.1	150.06	12.3	59.5	43.2	39.6	3.59	12.039		
1,000.0	984.4	1,005.3	995.2	3.1	2.6	145.93	20.7	87.3	52.3	47.8	4.45	11.754		
1,100.0	1,076.8	1,106.6	1,090.6	3.8	3.3	142.03	30.7	119.9	62.4	56.9	5.54	11.270		
1,200.0	1,167.6	1,207.0	1,183.5	4.6	3.9	138.33	41.9	156.4	73.0	66.2	6.82	10.700		
1,300.0	1,258.4	1,306.4	1,275.1	5.4	4.6	135.37	53.1	193.1	83.6	75.4	8.18	10.224		
1,400.0	1,349.1	1,405.7	1,366.8	6.1	5.4	133.07	64.4	229.8	94.4	84.8	9.56	9.870		
1,500.0	1,439.9	1,505.1	1,458.4	6.9	6.1	131.24	75.6	266.5	105.3	94.3	10.96	9.601		
1,600.0	1,530.6	1,604.4	1,550.0	7.7	6.8	129.76	86.8	303.1	116.3	103.9	12.38	9.393		
1,700.0	1,621.4	1,703.8	1,641.7	8.5	7.5	128.54	98.0	339.8	127.3	113.5	13.80	9.226		
1,800.0	1,712.1	1,803.1	1,733.3	9.3	8.2	127.51	109.3	376.5	138.4	123.2	15.22	9.092		
1,900.0	1,802.8	1,902.5	1,825.0	10.1	9.0	126.63	120.5	413.2	149.5	132.9	16.65	8.981		
2,000.0	1,893.6	2,001.9	1,916.6	10.9	9.7	125.88	131.7	449.9	160.7	142.6	18.08	8.888		
2,100.0	1,984.3	2,101.2	2,008.3	11.7	10.4	125.22	143.0	486.6	171.9	152.4	19.51	8.809		
2,200.0	2,075.1	2,200.6	2,099.9	12.5	11.2	124.65	154.2	523.3	183.1	162.2	20.95	8.741		
2,300.0	2,165.8	2,299.9	2,191.5	13.3	11.9	124.14	165.4	560.0	194.3	171.9	22.38	8.683		
2,400.0	2,256.6	2,399.3	2,283.2	14.1	12.6	123.68	176.7	596.7	205.6	181.8	23.82	8.631		
2,500.0	2,347.3	2,498.6	2,374.8	14.9	13.4	123.27	187.9	633.4	216.8	191.6	25.25	8.586		
2,600.0	2,438.1	2,598.0	2,466.5	15.6	14.1	122.91	199.1	670.1	228.1	201.4	26.69	8.546		
2,700.0	2,528.8	2,697.3	2,558.1	16.4	14.8	122.58	210.4	706.8	239.3	211.2	28.12	8.511		
2,800.0	2,619.5	2,796.7	2,649.8	17.2	15.6	122.27	221.6	743.5	250.6	221.1	29.56	8.478		
2,900.0	2,710.3	2,896.0	2,741.4	18.0	16.3	122.00	232.8	780.2	261.9	230.9	31.00	8.449		
3,000.0	2,801.0	2,995.4	2,833.0	18.8	17.0	121.74	244.0	816.9	273.2	240.8	32.43	8.423		
3,100.0	2,891.8	3,094.8	2,924.7	19.6	17.7	121.54	255.3	853.6	284.4	250.6	33.87	8.399		
3,200.0	2,983.9	3,190.1	3,013.4	20.3	18.4	121.47	265.4	886.8	294.6	259.5	35.12	8.390		
3,300.0	3,078.0	3,285.3	3,103.7	20.9	18.9	121.43	274.3	915.7	303.6	267.4	36.19	8.388		
3,400.0	3,173.6	3,380.6	3,195.5	21.4	19.3	121.43	281.8	940.3	311.3	274.2	37.10	8.391		
3,500.0	3,270.7	3,475.9	3,288.4	21.8	19.7	121.45	288.0	960.5	317.6	279.8	37.83	8.396		
3,600.0	3,368.9	3,571.3	3,382.4	22.1	20.0	121.50	292.8	976.3	322.7	284.3	38.40	8.404		
3,700.0	3,468.0	3,666.7	3,477.0	22.4	20.2	121.57	296.3	987.5	326.4	287.6	38.80	8.413		
3,800.0	3,567.6	3,762.0	3,572.1	22.5	20.3	121.66	298.3	994.2	328.8	289.8	39.04	8.423		
3,900.0	3,667.5	3,857.5	3,667.5	22.6	20.4	121.77	299.0	996.4	329.9	290.7	39.15	8.427		
4,000.0	3,767.5	3,957.5	3,767.5	22.6	20.4	179.43	299.0	996.4	329.9	290.6	39.26	8.402		
4,100.0	3,867.5	4,057.5	3,867.5	22.7	20.5	179.43	299.0	996.4	329.9	290.5	39.39	8.375		
4,200.0	3,967.5	4,157.5	3,967.5	22.7	20.6	179.43	299.0	996.4	329.9	290.4	39.52	8.348		
4,300.0	4,067.5	4,257.5	4,067.5	22.8	20.6	179.43	299.0	996.4	329.9	290.2	39.64	8.321		
4,400.0	4,167.5	4,357.5	4,167.5	22.9	20.7	179.43	299.0	996.4	329.9	290.1	39.78	8.294		
4,500.0	4,267.5	4,457.5	4,267.5	22.9	20.7	179.43	299.0	996.4	329.9	290.0	39.91	8.266		
4,600.0	4,367.5	4,557.5	4,367.5	23.0	20.8	179.43	299.0	996.4	329.9	289.8	40.05	8.237		
4,700.0	4,467.5	4,657.5	4,467.5	23.0	20.9	179.43	299.0	996.4	329.9	289.7	40.19	8.209		
4,800.0	4,567.5	4,757.5	4,567.5	23.1	20.9	179.43	299.0	996.4	329.9	289.6	40.33	8.180		
4,900.0	4,667.5	4,857.5	4,667.5	23.2	21.0	179.43	299.0	996.4	329.9	289.4	40.48	8.150		
5,000.0	4,767.5	4,957.5	4,767.5	23.2	21.1	179.43	299.0	996.4	329.9	289.3	40.62	8.121		
5,100.0	4,867.5	5,057.5	4,867.5	23.3	21.2	179.43	299.0	996.4	329.9	289.1	40.77	8.091		

CC - Min centre to center distance or convergent point, SF - min separation factor, ES - min ellipse separation

Cathedral Energy Services

Anticollision Report

Company:	Caerus Oil & Gas (NAD 27)	Local Co-ordinate Reference:	Well Nolte 13D-13
Project:	Garfield County, CO	TVD Reference:	WELL @ 5117.8ft (Original Well Elev)
Reference Site:	S14-T7S-R96W	MD Reference:	WELL @ 5117.8ft (Original Well Elev)
Site Error:	0.0ft	North Reference:	True
Reference Well:	Nolte 13D-13	Survey Calculation Method:	Minimum Curvature
Well Error:	0.0ft	Output errors are at	2.00 sigma
Reference Wellbore	DD	Database:	USA EDM 5000 Multi Users DB
Reference Design:	Plan #3	Offset TVD Reference:	Offset Datum

Offset Design													S14-T7S-R96W - Nolte 14A-13 - DD - Plan #3		Offset Site Error:		0.0 ft
Survey Program: 0-MWD															Offset Well Error:		0.0 ft
Reference		Offset		Semi Major Axis			Distance							Warning			
Measured Depth (ft)	Vertical Depth (ft)	Measured Depth (ft)	Vertical Depth (ft)	Reference (ft)	Offset (ft)	Highside Toolface (°)	Offset Wellbore Centre +N/-S (ft)	+E/-W (ft)	Between Centres (ft)	Between Ellipses (ft)	Total Uncertainty Axis	Separation Factor					
5,200.0	4,967.5	5,157.5	4,967.5	23.4	21.2	179.43	299.0	996.4	329.9	289.0	40.92	8.061					
5,300.0	5,067.5	5,257.5	5,067.5	23.4	21.3	179.43	299.0	996.4	329.9	288.8	41.08	8.031					
5,400.0	5,167.5	5,357.5	5,167.5	23.5	21.4	179.43	299.0	996.4	329.9	288.7	41.24	8.000					
5,500.0	5,267.5	5,457.5	5,267.5	23.6	21.5	179.43	299.0	996.4	329.9	288.5	41.40	7.969					
5,600.0	5,367.5	5,557.5	5,367.5	23.6	21.5	179.43	299.0	996.4	329.9	288.3	41.56	7.938					
5,700.0	5,467.5	5,657.5	5,467.5	23.7	21.6	179.43	299.0	996.4	329.9	288.2	41.72	7.907					
5,800.0	5,567.5	5,757.5	5,567.5	23.8	21.7	179.43	299.0	996.4	329.9	288.0	41.89	7.876					
5,900.0	5,667.5	5,857.5	5,667.5	23.9	21.8	179.43	299.0	996.4	329.9	287.8	42.06	7.844					
6,000.0	5,767.5	5,957.5	5,767.5	23.9	21.9	179.43	299.0	996.4	329.9	287.7	42.23	7.813					
6,100.0	5,867.5	6,057.5	5,867.5	24.0	21.9	179.43	299.0	996.4	329.9	287.5	42.40	7.781 SF					
6,122.5	5,890.0	6,060.0	5,870.0	24.0	21.9	179.43	299.0	996.4	330.5	288.1	42.42	7.791					

Cathedral Energy Services

Anticollision Report

Company:	Caerus Oil & Gas (NAD 27)	Local Co-ordinate Reference:	Well Nolte 13D-13
Project:	Garfield County, CO	TVD Reference:	WELL @ 5117.8ft (Original Well Elev)
Reference Site:	S14-T7S-R96W	MD Reference:	WELL @ 5117.8ft (Original Well Elev)
Site Error:	0.0ft	North Reference:	True
Reference Well:	Nolte 13D-13	Survey Calculation Method:	Minimum Curvature
Well Error:	0.0ft	Output errors are at	2.00 sigma
Reference Wellbore	DD	Database:	USA EDM 5000 Multi Users DB
Reference Design:	Plan #3	Offset TVD Reference:	Offset Datum

Offset Design S14-T7S-R96W - Nolte 14B-13 - DD - Plan #3													Offset Site Error: 0.0 ft	
Survey Program: 0-MWD													Offset Well Error: 0.0 ft	
Reference		Offset		Semi Major Axis			Distance						Warning	
Measured Depth (ft)	Vertical Depth (ft)	Measured Depth (ft)	Vertical Depth (ft)	Reference (ft)	Offset (ft)	Highside Toolface (°)	Offset Wellbore Centre +N/-S (ft)	+E/-W (ft)	Between Centres (ft)	Between Ellipses (ft)	Total Uncertainty Axis	Separation Factor		
0.0	0.0	0.0	0.0	0.0	0.0	-152.44	-14.2	-7.4	16.0					
100.0	100.0	100.0	100.0	0.1	0.1	-152.44	-14.2	-7.4	16.0	15.7	0.25	62.980		
200.0	200.0	200.0	200.0	0.3	0.3	-152.44	-14.2	-7.4	16.0	15.4	0.60	26.523		
300.0	300.0	300.0	300.0	0.5	0.5	-152.44	-14.2	-7.4	16.0	15.0	0.95	16.799 CC, ES		
400.0	400.0	400.0	400.0	0.7	0.7	153.99	-14.2	-7.4	18.3	17.0	1.30	14.066 SF		
500.0	499.6	499.6	499.6	0.9	0.8	161.64	-14.2	-7.4	25.6	23.9	1.65	15.513		
600.0	598.8	599.5	599.4	1.1	1.0	167.07	-14.2	-6.8	37.8	35.8	1.99	18.939		
700.0	697.1	700.1	699.9	1.5	1.2	167.35	-14.3	-1.5	52.0	49.6	2.35	22.133		
800.0	794.3	801.0	800.3	1.9	1.4	165.18	-14.5	9.1	67.6	64.9	2.74	24.704		
900.0	890.2	902.0	900.0	2.5	1.7	162.01	-14.7	24.9	84.9	81.7	3.20	26.495		
1,000.0	984.4	1,003.1	998.9	3.1	2.1	158.47	-15.1	46.1	104.0	100.2	3.80	27.359		
1,100.0	1,076.8	1,104.1	1,096.3	3.8	2.5	154.87	-15.5	72.4	125.2	120.6	4.58	27.337		
1,200.0	1,167.6	1,205.0	1,192.2	4.6	3.1	151.33	-16.0	103.8	147.4	141.8	5.58	26.412		
1,300.0	1,258.4	1,306.2	1,286.6	5.4	3.7	147.19	-16.6	140.3	167.8	160.9	6.84	24.525		
1,400.0	1,349.1	1,404.6	1,376.9	6.1	4.5	142.92	-17.3	179.6	187.3	179.0	8.27	22.648		
1,500.0	1,439.9	1,501.9	1,465.9	6.9	5.2	139.43	-17.9	218.6	207.5	197.8	9.74	21.310		
1,600.0	1,530.6	1,599.1	1,555.0	7.7	5.9	136.57	-18.6	257.5	228.4	217.2	11.23	20.335		
1,700.0	1,621.4	1,696.3	1,644.0	8.5	6.6	134.18	-19.2	296.5	249.7	237.0	12.74	19.607		
1,800.0	1,712.1	1,793.5	1,733.1	9.3	7.4	132.17	-19.9	335.5	271.4	257.1	14.24	19.053		
1,900.0	1,802.8	1,890.7	1,822.1	10.1	8.1	130.46	-20.5	374.5	293.3	277.6	15.75	18.620		
2,000.0	1,893.6	1,987.9	1,911.2	10.9	8.8	128.99	-21.2	413.5	315.5	298.2	17.26	18.277		
2,100.0	1,984.3	2,085.1	2,000.2	11.7	9.6	127.70	-21.8	452.4	337.8	319.1	18.77	18.000		
2,200.0	2,075.1	2,182.3	2,089.3	12.5	10.3	126.58	-22.5	491.4	360.3	340.0	20.27	17.772		
2,300.0	2,165.8	2,279.6	2,178.3	13.3	11.1	125.59	-23.1	530.4	382.9	361.1	21.78	17.584		
2,400.0	2,256.6	2,376.8	2,267.4	14.1	11.8	124.71	-23.8	569.4	405.6	382.3	23.28	17.425		
2,500.0	2,347.3	2,474.0	2,356.4	14.9	12.6	123.92	-24.4	608.4	428.4	403.6	24.77	17.290		
2,600.0	2,438.1	2,571.2	2,445.5	15.6	13.3	123.21	-25.1	647.4	451.2	424.9	26.27	17.175		
2,700.0	2,528.8	2,668.4	2,534.5	16.4	14.0	122.57	-25.7	686.3	474.1	446.3	27.77	17.075		
2,800.0	2,619.5	2,765.6	2,623.6	17.2	14.8	121.99	-26.3	725.3	497.0	467.8	29.26	16.988		
2,900.0	2,710.3	2,862.8	2,712.6	18.0	15.5	121.46	-27.0	764.3	520.0	489.3	30.75	16.912		
3,000.0	2,801.0	2,960.0	2,801.7	18.8	16.3	120.97	-27.6	803.3	543.1	510.8	32.24	16.844		
3,100.0	2,891.8	3,057.3	2,890.8	19.6	17.0	120.62	-28.3	842.3	566.1	532.4	33.73	16.786		
3,200.0	2,983.9	3,155.1	2,981.5	20.3	17.7	120.76	-28.9	878.8	587.5	552.4	35.04	16.767		
3,300.0	3,078.0	3,253.7	3,074.7	20.9	18.3	120.91	-29.4	911.0	606.2	570.0	36.18	16.757		
3,400.0	3,173.6	3,353.0	3,170.2	21.4	18.7	121.06	-29.9	938.4	622.2	585.1	37.14	16.754		
3,500.0	3,270.7	3,452.9	3,267.5	21.8	19.1	121.21	-30.3	960.9	635.4	597.5	37.92	16.756		
3,600.0	3,368.9	3,553.3	3,366.3	22.1	19.4	121.36	-30.5	978.4	645.8	607.3	38.53	16.761		
3,700.0	3,468.0	3,653.9	3,466.2	22.4	19.6	121.50	-30.8	990.8	653.3	614.4	38.96	16.768		
3,800.0	3,567.6	3,754.8	3,566.8	22.5	19.8	121.64	-30.9	997.8	658.0	618.8	39.22	16.776		
3,900.0	3,667.5	3,855.6	3,667.5	22.6	19.8	121.77	-30.9	999.6	659.8	620.4	39.34	16.769		
4,000.0	3,767.5	3,955.6	3,767.5	22.6	19.9	179.43	-30.9	999.6	659.8	620.3	39.46	16.719		
4,100.0	3,867.5	4,055.6	3,867.5	22.7	20.0	179.43	-30.9	999.6	659.8	620.2	39.59	16.667		
4,200.0	3,967.5	4,155.6	3,967.5	22.7	20.0	179.43	-30.9	999.6	659.8	620.1	39.71	16.614		
4,300.0	4,067.5	4,255.6	4,067.5	22.8	20.1	179.43	-30.9	999.6	659.8	619.9	39.84	16.560		
4,400.0	4,167.5	4,355.6	4,167.5	22.9	20.2	179.43	-30.9	999.6	659.8	619.8	39.97	16.506		
4,500.0	4,267.5	4,455.6	4,267.5	22.9	20.2	179.43	-30.9	999.6	659.8	619.7	40.11	16.451		
4,600.0	4,367.5	4,555.6	4,367.5	23.0	20.3	179.43	-30.9	999.6	659.8	619.5	40.24	16.395		
4,700.0	4,467.5	4,655.6	4,467.5	23.0	20.4	179.43	-30.9	999.6	659.8	619.4	40.38	16.339		
4,800.0	4,567.5	4,755.6	4,567.5	23.1	20.4	179.43	-30.9	999.6	659.8	619.3	40.52	16.282		
4,900.0	4,667.5	4,855.6	4,667.5	23.2	20.5	179.43	-30.9	999.6	659.8	619.1	40.67	16.224		
5,000.0	4,767.5	4,955.6	4,767.5	23.2	20.6	179.43	-30.9	999.6	659.8	619.0	40.81	16.166		
5,100.0	4,867.5	5,055.6	4,867.5	23.3	20.6	179.43	-30.9	999.6	659.8	618.8	40.96	16.107		

CC - Min centre to center distance or convergent point, SF - min separation factor, ES - min ellipse separation

Cathedral Energy Services

Anticollision Report

Company:	Caerus Oil & Gas (NAD 27)	Local Co-ordinate Reference:	Well Nolte 13D-13
Project:	Garfield County, CO	TVD Reference:	WELL @ 5117.8ft (Original Well Elev)
Reference Site:	S14-T7S-R96W	MD Reference:	WELL @ 5117.8ft (Original Well Elev)
Site Error:	0.0ft	North Reference:	True
Reference Well:	Nolte 13D-13	Survey Calculation Method:	Minimum Curvature
Well Error:	0.0ft	Output errors are at	2.00 sigma
Reference Wellbore	DD	Database:	USA EDM 5000 Multi Users DB
Reference Design:	Plan #3	Offset TVD Reference:	Offset Datum

Offset Design S14-T7S-R96W - Nolte 14B-13 - DD - Plan #3													Offset Site Error:	0.0 ft
Survey Program: 0-MWD													Offset Well Error:	0.0 ft
Reference		Offset		Semi Major Axis			Distance						Warning	
Measured Depth (ft)	Vertical Depth (ft)	Measured Depth (ft)	Vertical Depth (ft)	Reference (ft)	Offset (ft)	Highside Toolface (°)	Offset Wellbore Centre +N/-S (ft)	+E/-W (ft)	Between Centres (ft)	Between Ellipses (ft)	Total Uncertainty Axis	Separation Factor		
5,200.0	4,967.5	5,155.6	4,967.5	23.4	20.7	179.43	-30.9	999.6	659.8	618.7	41.11	16.047		
5,300.0	5,067.5	5,255.6	5,067.5	23.4	20.8	179.43	-30.9	999.6	659.8	618.5	41.27	15.988		
5,400.0	5,167.5	5,355.6	5,167.5	23.5	20.9	179.43	-30.9	999.6	659.8	618.4	41.42	15.927		
5,500.0	5,267.5	5,455.6	5,267.5	23.6	20.9	179.43	-30.9	999.6	659.8	618.2	41.58	15.867		
5,600.0	5,367.5	5,555.6	5,367.5	23.6	21.0	179.43	-30.9	999.6	659.8	618.0	41.74	15.805		
5,700.0	5,467.5	5,655.6	5,467.5	23.7	21.1	179.43	-30.9	999.6	659.8	617.9	41.91	15.744		
5,800.0	5,567.5	5,755.6	5,567.5	23.8	21.2	179.43	-30.9	999.6	659.8	617.7	42.07	15.682		
5,900.0	5,667.5	5,855.6	5,667.5	23.9	21.3	179.43	-30.9	999.6	659.8	617.5	42.24	15.620		
6,000.0	5,767.5	5,955.6	5,767.5	23.9	21.4	179.43	-30.9	999.6	659.8	617.4	42.41	15.557		
6,064.0	5,831.5	6,019.5	5,831.5	24.0	21.4	179.43	-30.9	999.6	659.8	617.3	42.52	15.517		
6,100.0	5,867.5	6,048.1	5,860.0	24.0	21.4	179.43	-30.9	999.6	659.8	617.3	42.58	15.498		
6,122.5	5,890.0	6,048.1	5,860.0	24.0	21.4	179.43	-30.9	999.6	660.5	617.9	42.60	15.506		

Cathedral Energy Services

Anticollision Report

Company:	Caerus Oil & Gas (NAD 27)	Local Co-ordinate Reference:	Well Nolte 13D-13
Project:	Garfield County, CO	TVD Reference:	WELL @ 5117.8ft (Original Well Elev)
Reference Site:	S14-T7S-R96W	MD Reference:	WELL @ 5117.8ft (Original Well Elev)
Site Error:	0.0ft	North Reference:	True
Reference Well:	Nolte 13D-13	Survey Calculation Method:	Minimum Curvature
Well Error:	0.0ft	Output errors are at	2.00 sigma
Reference Wellbore	DD	Database:	USA EDM 5000 Multi Users DB
Reference Design:	Plan #3	Offset TVD Reference:	Offset Datum

Offset Design S14-T7S-R96W - Nolte 14C-13 - DD - Plan #3													Offset Site Error:	0.0 ft
Survey Program:		0-MWD											Offset Well Error:	0.0 ft
Reference		Offset		Semi Major Axis			Distance							Warning
Measured Depth (ft)	Vertical Depth (ft)	Measured Depth (ft)	Vertical Depth (ft)	Reference (ft)	Offset (ft)	Highside Toolface (°)	Offset Wellbore Centre +N/-S (ft)	+E/-W (ft)	Between Centres (ft)	Between Ellipses (ft)	Total Uncertainty Axis	Separation Factor		
0.0	0.0	0.0	0.0	0.0	0.0	-151.97	-20.7	-11.0	23.5					
100.0	100.0	100.0	100.0	0.1	0.1	-151.97	-20.7	-11.0	23.5	23.3	0.25	92.493		
200.0	200.0	200.0	200.0	0.3	0.3	-151.97	-20.7	-11.0	23.5	22.9	0.60	38.967		
300.0	300.0	300.0	300.0	0.5	0.5	-151.97	-20.7	-11.0	23.5	22.6	0.95	24.683	CC, ES	
400.0	400.0	400.0	400.0	0.7	0.7	153.21	-20.7	-11.0	25.8	24.5	1.30	19.830	SF	
500.0	499.6	499.6	499.6	0.9	0.8	159.28	-20.7	-11.0	33.0	31.4	1.65	19.991		
600.0	598.8	599.6	599.6	1.1	1.0	161.97	-21.6	-8.6	44.5	42.5	2.01	22.180		
700.0	697.1	699.5	699.1	1.5	1.2	160.20	-24.1	-1.2	59.1	56.7	2.39	24.690		
800.0	794.3	798.8	797.6	1.9	1.5	156.72	-28.4	11.0	77.0	74.2	2.86	26.909		
900.0	890.2	897.4	894.6	2.5	1.8	152.79	-34.2	27.9	98.6	95.1	3.46	28.473		
1,000.0	984.4	995.0	989.5	3.1	2.2	148.96	-41.6	49.3	123.9	119.7	4.23	29.321		
1,100.0	1,076.8	1,091.3	1,081.9	3.8	2.7	145.42	-50.4	74.8	153.1	148.0	5.17	29.624		
1,200.0	1,167.6	1,186.4	1,171.7	4.6	3.2	142.41	-60.6	104.3	185.3	179.0	6.29	29.473		
1,300.0	1,258.4	1,280.7	1,259.1	5.4	3.9	139.16	-72.1	137.7	217.8	210.2	7.58	28.746		
1,400.0	1,349.1	1,374.0	1,344.0	6.1	4.6	135.74	-84.8	174.5	250.9	241.9	8.97	27.957		
1,500.0	1,439.9	1,467.3	1,428.4	6.9	5.3	132.93	-97.7	212.0	284.7	274.3	10.40	27.380		
1,600.0	1,530.6	1,560.6	1,512.8	7.7	6.1	130.71	-110.7	249.5	319.0	307.2	11.82	26.984		
1,700.0	1,621.4	1,653.9	1,597.2	8.5	6.8	128.92	-123.6	287.0	353.7	340.4	13.24	26.705		
1,800.0	1,712.1	1,747.1	1,681.6	9.3	7.5	127.44	-136.6	324.5	388.6	373.9	14.66	26.502		
1,900.0	1,802.8	1,840.4	1,766.0	10.1	8.3	126.21	-149.5	362.0	423.7	407.6	16.08	26.351		
2,000.0	1,893.6	1,933.7	1,850.5	10.9	9.0	125.16	-162.5	399.5	458.9	441.4	17.49	26.237		
2,100.0	1,984.3	2,027.0	1,934.9	11.7	9.8	124.27	-175.4	437.0	494.3	475.4	18.90	26.150		
2,200.0	2,075.1	2,120.2	2,019.3	12.5	10.6	123.49	-188.4	474.5	529.7	509.4	20.31	26.081		
2,300.0	2,165.8	2,213.5	2,103.7	13.3	11.3	122.81	-201.3	512.1	565.3	543.5	21.72	26.027		
2,400.0	2,256.6	2,306.8	2,188.1	14.1	12.1	122.21	-214.3	549.6	600.8	577.7	23.12	25.984		
2,500.0	2,347.3	2,400.1	2,272.5	14.9	12.8	121.68	-227.2	587.1	636.5	612.0	24.53	25.950		
2,600.0	2,438.1	2,493.4	2,357.0	15.6	13.6	121.20	-240.2	624.6	672.2	646.2	25.93	25.922		
2,700.0	2,528.8	2,586.6	2,441.4	16.4	14.3	120.77	-253.1	662.1	707.9	680.6	27.33	25.899		
2,800.0	2,619.5	2,679.9	2,525.8	17.2	15.1	120.38	-266.1	699.6	743.6	714.9	28.73	25.880		
2,900.0	2,710.3	2,773.2	2,610.2	18.0	15.9	120.03	-279.0	737.1	779.4	749.3	30.13	25.865		
3,000.0	2,801.0	2,866.5	2,694.6	18.8	16.6	119.71	-292.0	774.6	815.2	783.7	31.53	25.852		
3,100.0	2,891.8	2,959.8	2,779.0	19.6	17.4	119.57	-304.9	812.2	851.0	818.1	32.94	25.833		
3,200.0	2,983.9	3,061.4	2,871.3	20.3	18.2	120.04	-318.8	852.4	885.1	850.7	34.36	25.762		
3,300.0	3,078.0	3,173.5	2,975.4	20.9	18.9	120.39	-332.4	891.9	915.2	879.5	35.66	25.664		
3,400.0	3,173.6	3,288.3	3,084.2	21.4	19.6	120.69	-344.3	926.3	940.9	904.1	36.78	25.580		
3,500.0	3,270.7	3,405.2	3,197.1	21.8	20.1	120.97	-354.2	954.9	962.1	924.4	37.71	25.513		
3,600.0	3,368.9	3,524.0	3,313.6	22.1	20.5	121.21	-361.9	977.2	978.7	940.2	38.43	25.466		
3,700.0	3,468.0	3,644.2	3,432.5	22.4	20.8	121.43	-367.3	992.8	990.5	951.5	38.95	25.431		
3,800.0	3,567.6	3,765.2	3,553.2	22.5	20.9	121.62	-370.2	1,001.3	997.5	958.2	39.26	25.405		
3,900.0	3,667.5	3,879.5	3,667.5	22.6	21.0	121.77	-370.8	1,003.0	999.7	960.2	39.41	25.366		
4,000.0	3,767.5	3,979.5	3,767.5	22.6	21.1	179.43	-370.8	1,003.0	999.7	960.2	39.53	25.289		
4,100.0	3,867.5	4,079.5	3,867.5	22.7	21.1	179.43	-370.8	1,003.0	999.7	960.0	39.65	25.210		
4,200.0	3,967.5	4,179.5	3,967.5	22.7	21.2	179.43	-370.8	1,003.0	999.7	959.9	39.78	25.130		
4,300.0	4,067.5	4,279.5	4,067.5	22.8	21.2	179.43	-370.8	1,003.0	999.7	959.8	39.91	25.049		
4,400.0	4,167.5	4,379.5	4,167.5	22.9	21.3	179.43	-370.8	1,003.0	999.7	959.6	40.04	24.967		
4,500.0	4,267.5	4,479.5	4,267.5	22.9	21.4	179.43	-370.8	1,003.0	999.7	959.5	40.17	24.883		
4,600.0	4,367.5	4,579.5	4,367.5	23.0	21.4	179.43	-370.8	1,003.0	999.7	959.4	40.31	24.799		
4,700.0	4,467.5	4,679.5	4,467.5	23.0	21.5	179.43	-370.8	1,003.0	999.7	959.2	40.45	24.714		
4,800.0	4,567.5	4,779.5	4,567.5	23.1	21.5	179.43	-370.8	1,003.0	999.7	959.1	40.59	24.627		
4,900.0	4,667.5	4,879.5	4,667.5	23.2	21.6	179.43	-370.8	1,003.0	999.7	958.9	40.74	24.540		
5,000.0	4,767.5	4,979.5	4,767.5	23.2	21.7	179.43	-370.8	1,003.0	999.7	958.8	40.88	24.452		
5,100.0	4,867.5	5,079.5	4,867.5	23.3	21.8	179.43	-370.8	1,003.0	999.7	958.6	41.03	24.363		

CC - Min centre to center distance or convergent point, SF - min separation factor, ES - min ellipse separation

Cathedral Energy Services

Anticollision Report

Company:	Caerus Oil & Gas (NAD 27)	Local Co-ordinate Reference:	Well Nolte 13D-13
Project:	Garfield County, CO	TVD Reference:	WELL @ 5117.8ft (Original Well Elev)
Reference Site:	S14-T7S-R96W	MD Reference:	WELL @ 5117.8ft (Original Well Elev)
Site Error:	0.0ft	North Reference:	True
Reference Well:	Nolte 13D-13	Survey Calculation Method:	Minimum Curvature
Well Error:	0.0ft	Output errors are at	2.00 sigma
Reference Wellbore	DD	Database:	USA EDM 5000 Multi Users DB
Reference Design:	Plan #3	Offset TVD Reference:	Offset Datum

Offset Design												S14-T7S-R96W - Nolte 14C-13 - DD - Plan #3		Offset Site Error:		0.0 ft	
Survey Program:												0-MWD		Offset Well Error:		0.0 ft	
Reference		Offset		Semi Major Axis			Distance							Warning			
Measured Depth	Vertical Depth	Measured Depth	Vertical Depth	Reference	Offset	Highside Toolface	Offset Wellbore Centre		Between Centres	Between Ellipses	Total Uncertainty Axis	Separation Factor					
(ft)	(ft)	(ft)	(ft)	(ft)	(ft)	(°)	+N/-S (ft)	+E/-W (ft)	(ft)	(ft)							
5,200.0	4,967.5	5,179.5	4,967.5	23.4	21.8	179.43	-370.8	1,003.0	999.7	958.5	41.18	24.274					
5,300.0	5,067.5	5,279.5	5,067.5	23.4	21.9	179.43	-370.8	1,003.0	999.7	958.3	41.34	24.183					
5,400.0	5,167.5	5,379.5	5,167.5	23.5	22.0	179.43	-370.8	1,003.0	999.7	958.2	41.49	24.092					
5,500.0	5,267.5	5,479.5	5,267.5	23.6	22.0	179.43	-370.8	1,003.0	999.7	958.0	41.65	24.000					
5,600.0	5,367.5	5,579.5	5,367.5	23.6	22.1	179.43	-370.8	1,003.0	999.7	957.9	41.81	23.908					
5,700.0	5,467.5	5,679.5	5,467.5	23.7	22.2	179.43	-370.8	1,003.0	999.7	957.7	41.98	23.815					
5,800.0	5,567.5	5,779.5	5,567.5	23.8	22.3	179.43	-370.8	1,003.0	999.7	957.5	42.14	23.721					
5,900.0	5,667.5	5,879.5	5,667.5	23.9	22.4	179.43	-370.8	1,003.0	999.7	957.4	42.31	23.627					
6,000.0	5,767.5	5,979.5	5,767.5	23.9	22.4	179.43	-370.8	1,003.0	999.7	957.2	42.48	23.533					
6,054.0	5,821.5	6,033.6	5,821.5	24.0	22.5	179.43	-370.8	1,003.0	999.7	957.1	42.57	23.482					
6,100.0	5,867.5	6,052.0	5,840.0	24.0	22.5	179.43	-370.8	1,003.0	1,000.1	957.4	42.63	23.460					
6,122.5	5,890.0	6,052.0	5,840.0	24.0	22.5	179.43	-370.8	1,003.0	1,000.9	958.3	42.65	23.469					

Cathedral Energy Services

Anticollision Report

Company:	Caerus Oil & Gas (NAD 27)	Local Co-ordinate Reference:	Well Nolte 13D-13
Project:	Garfield County, CO	TVD Reference:	WELL @ 5117.8ft (Original Well Elev)
Reference Site:	S14-T7S-R96W	MD Reference:	WELL @ 5117.8ft (Original Well Elev)
Site Error:	0.0ft	North Reference:	True
Reference Well:	Nolte 13D-13	Survey Calculation Method:	Minimum Curvature
Well Error:	0.0ft	Output errors are at	2.00 sigma
Reference Wellbore	DD	Database:	USA EDM 5000 Multi Users DB
Reference Design:	Plan #3	Offset TVD Reference:	Offset Datum

Offset Design S14-T7S-R96W - Nolte 14D-13 - DD - Plan #3													Offset Site Error: 0.0 ft	
Survey Program: 0-MWD													Offset Well Error: 0.0 ft	
Reference		Offset		Semi Major Axis			Distance							Warning
Measured Depth (ft)	Vertical Depth (ft)	Measured Depth (ft)	Vertical Depth (ft)	Reference (ft)	Offset (ft)	Highside Toolface (°)	Offset Wellbore Centre +N/-S (ft)	+E/-W (ft)	Between Centres (ft)	Between Ellipses (ft)	Total Uncertainty Axis	Separation Factor		
0.0	0.0	0.0	0.0	0.0	0.0	-152.49	-28.4	-14.8	32.0					
100.0	100.0	100.0	100.0	0.1	0.1	-152.49	-28.4	-14.8	32.0	31.7	0.25	125.769		
200.0	200.0	200.0	200.0	0.3	0.3	-152.49	-28.4	-14.8	32.0	31.4	0.60	53.007		
300.0	300.0	300.0	300.0	0.5	0.5	-152.49	-28.4	-14.8	32.0	31.0	0.95	33.580	CC, ES	
400.0	400.0	400.0	400.0	0.7	0.7	152.02	-28.4	-14.8	34.3	33.0	1.30	26.322		
500.0	499.6	499.6	499.6	0.9	0.8	153.42	-29.8	-12.6	41.4	39.7	1.66	24.918	SF	
600.0	598.8	598.8	598.4	1.1	1.0	151.16	-34.0	-6.1	53.3	51.3	2.06	25.909		
700.0	697.1	696.9	695.7	1.5	1.3	147.55	-40.9	4.6	70.3	67.8	2.54	27.691		
800.0	794.3	793.7	790.9	1.9	1.6	143.89	-50.4	19.1	92.5	89.3	3.14	29.480		
900.0	890.2	888.6	883.3	2.5	2.0	140.62	-62.2	37.4	119.9	116.0	3.87	30.974		
1,000.0	984.4	981.5	972.5	3.1	2.5	137.80	-76.2	58.9	152.4	147.6	4.74	32.141		
1,100.0	1,076.8	1,071.8	1,058.1	3.8	3.0	135.36	-92.0	83.3	189.8	184.1	5.74	33.044		
1,200.0	1,167.6	1,159.9	1,140.0	4.6	3.6	133.67	-109.6	110.4	231.2	224.3	6.85	33.723		
1,300.0	1,258.4	1,246.2	1,218.8	5.4	4.3	131.85	-128.7	139.9	274.1	266.0	8.06	34.014		
1,400.0	1,349.1	1,330.5	1,294.2	6.1	5.0	129.83	-149.3	171.7	318.7	309.3	9.32	34.195		
1,500.0	1,439.9	1,418.0	1,371.2	6.9	5.8	127.83	-171.9	206.4	364.5	353.8	10.64	34.255		
1,600.0	1,530.6	1,506.3	1,449.0	7.7	6.5	126.26	-194.6	241.5	410.6	398.6	11.96	34.316		
1,700.0	1,621.4	1,594.5	1,526.7	8.5	7.3	125.00	-217.3	276.5	456.8	443.6	13.29	34.383		
1,800.0	1,712.1	1,682.7	1,604.4	9.3	8.1	123.97	-240.1	311.6	503.3	488.7	14.61	34.450		
1,900.0	1,802.8	1,771.0	1,682.1	10.1	8.9	123.12	-262.8	346.6	549.8	533.9	15.93	34.516		
2,000.0	1,893.6	1,859.2	1,759.8	10.9	9.7	122.39	-285.6	381.7	596.4	579.2	17.25	34.579		
2,100.0	1,984.3	1,947.4	1,837.5	11.7	10.5	121.77	-308.3	416.7	643.1	624.6	18.57	34.638		
2,200.0	2,075.1	2,035.7	1,915.2	12.5	11.3	121.24	-331.0	451.8	689.9	670.0	19.89	34.693		
2,300.0	2,165.8	2,123.9	1,992.9	13.3	12.1	120.77	-353.8	486.9	736.7	715.5	21.20	34.744		
2,400.0	2,256.6	2,212.1	2,070.6	14.1	12.8	120.36	-376.5	521.9	783.5	761.0	22.52	34.792		
2,500.0	2,347.3	2,300.4	2,148.4	14.9	13.6	119.99	-399.3	557.0	830.3	806.5	23.84	34.836		
2,600.0	2,438.1	2,388.6	2,226.1	15.6	14.4	119.67	-422.0	592.0	877.2	852.0	25.15	34.877		
2,700.0	2,528.8	2,476.8	2,303.8	16.4	15.2	119.37	-444.8	627.1	924.1	897.6	26.47	34.915		
2,800.0	2,619.5	2,565.1	2,381.5	17.2	16.0	119.11	-467.5	662.1	971.0	943.2	27.78	34.950		
2,900.0	2,710.3	2,653.3	2,459.2	18.0	16.8	118.87	-490.2	697.2	1,017.9	988.8	29.10	34.983		
3,000.0	2,801.0	2,741.5	2,536.9	18.8	17.6	118.65	-513.0	732.2	1,064.8	1,034.4	30.41	35.014		
3,100.0	2,891.8	2,829.8	2,614.6	19.6	18.4	118.66	-535.7	767.3	1,111.7	1,080.0	31.75	35.013		
3,200.0	2,983.9	2,918.6	2,692.9	20.3	19.2	119.65	-558.6	802.6	1,157.2	1,124.1	33.15	34.908		
3,300.0	3,078.0	3,037.9	2,798.8	20.9	20.2	120.20	-588.4	848.5	1,199.7	1,165.1	34.63	34.648		
3,400.0	3,173.6	3,179.2	2,928.4	21.4	21.2	120.57	-619.1	895.8	1,236.6	1,200.5	36.03	34.325		
3,500.0	3,270.7	3,327.2	3,068.1	21.8	22.1	120.89	-645.5	936.5	1,267.1	1,229.8	37.21	34.050		
3,600.0	3,368.9	3,480.8	3,216.7	22.1	22.7	121.15	-666.6	969.1	1,290.8	1,252.7	38.16	33.824		
3,700.0	3,468.0	3,638.7	3,372.2	22.4	23.2	121.39	-681.5	992.0	1,307.6	1,268.7	38.85	33.656		
3,800.0	3,567.6	3,799.3	3,532.1	22.5	23.4	121.61	-689.4	1,004.2	1,317.1	1,277.8	39.28	33.532		
3,900.0	3,667.5	3,934.8	3,667.5	22.6	23.5	121.78	-690.7	1,006.1	1,319.6	1,280.1	39.45	33.450		
4,000.0	3,767.5	4,034.8	3,767.5	22.6	23.6	179.43	-690.7	1,006.1	1,319.6	1,280.0	39.57	33.348		
4,100.0	3,867.5	4,134.8	3,867.5	22.7	23.6	179.43	-690.7	1,006.1	1,319.6	1,279.9	39.69	33.243		
4,200.0	3,967.5	4,234.8	3,967.5	22.7	23.7	179.43	-690.7	1,006.1	1,319.6	1,279.8	39.82	33.137		
4,300.0	4,067.5	4,334.8	4,067.5	22.8	23.7	179.43	-690.7	1,006.1	1,319.6	1,279.6	39.95	33.030		
4,400.0	4,167.5	4,434.8	4,167.5	22.9	23.8	179.43	-690.7	1,006.1	1,319.6	1,279.5	40.08	32.921		
4,500.0	4,267.5	4,534.8	4,267.5	22.9	23.8	179.43	-690.7	1,006.1	1,319.6	1,279.4	40.22	32.811		
4,600.0	4,367.5	4,634.8	4,367.5	23.0	23.9	179.43	-690.7	1,006.1	1,319.6	1,279.2	40.36	32.699		
4,700.0	4,467.5	4,734.8	4,467.5	23.0	24.0	179.43	-690.7	1,006.1	1,319.6	1,279.1	40.50	32.586		
4,800.0	4,567.5	4,834.8	4,567.5	23.1	24.0	179.43	-690.7	1,006.1	1,319.6	1,278.9	40.64	32.472		
4,900.0	4,667.5	4,934.8	4,667.5	23.2	24.1	179.43	-690.7	1,006.1	1,319.6	1,278.8	40.78	32.356		
5,000.0	4,767.5	5,034.8	4,767.5	23.2	24.1	179.43	-690.7	1,006.1	1,319.6	1,278.6	40.93	32.240		
5,100.0	4,867.5	5,134.8	4,867.5	23.3	24.2	179.43	-690.7	1,006.1	1,319.6	1,278.5	41.08	32.122		

CC - Min centre to center distance or convergent point, SF - min separation factor, ES - min ellipse separation

Cathedral Energy Services

Anticollision Report

Company:	Caerus Oil & Gas (NAD 27)	Local Co-ordinate Reference:	Well Nolte 13D-13
Project:	Garfield County, CO	TVD Reference:	WELL @ 5117.8ft (Original Well Elev)
Reference Site:	S14-T7S-R96W	MD Reference:	WELL @ 5117.8ft (Original Well Elev)
Site Error:	0.0ft	North Reference:	True
Reference Well:	Nolte 13D-13	Survey Calculation Method:	Minimum Curvature
Well Error:	0.0ft	Output errors are at	2.00 sigma
Reference Wellbore	DD	Database:	USA EDM 5000 Multi Users DB
Reference Design:	Plan #3	Offset TVD Reference:	Offset Datum

Offset Design S14-T7S-R96W - Nolte 14D-13 - DD - Plan #3													Offset Site Error:	0.0 ft
Survey Program: 0-MWD													Offset Well Error:	0.0 ft
Reference		Offset		Semi Major Axis			Distance						Warning	
Measured Depth (ft)	Vertical Depth (ft)	Measured Depth (ft)	Vertical Depth (ft)	Reference (ft)	Offset (ft)	Highside Toolface (°)	Offset Wellbore Centre +N/-S (ft)	+E/-W (ft)	Between Centres (ft)	Between Ellipses (ft)	Total Uncertainty Axis	Separation Factor		
5,200.0	4,967.5	5,234.8	4,967.5	23.4	24.3	179.43	-690.7	1,006.1	1,319.6	1,278.3	41.23	32.004		
5,300.0	5,067.5	5,334.8	5,067.5	23.4	24.3	179.43	-690.7	1,006.1	1,319.6	1,278.2	41.39	31.884		
5,400.0	5,167.5	5,434.8	5,167.5	23.5	24.4	179.43	-690.7	1,006.1	1,319.6	1,278.0	41.54	31.764		
5,500.0	5,267.5	5,534.8	5,267.5	23.6	24.5	179.43	-690.7	1,006.1	1,319.6	1,277.9	41.70	31.643		
5,600.0	5,367.5	5,634.8	5,367.5	23.6	24.5	179.43	-690.7	1,006.1	1,319.6	1,277.7	41.86	31.520		
5,700.0	5,467.5	5,734.8	5,467.5	23.7	24.6	179.43	-690.7	1,006.1	1,319.6	1,277.5	42.03	31.398		
5,800.0	5,567.5	5,834.8	5,567.5	23.8	24.7	179.43	-690.7	1,006.1	1,319.6	1,277.4	42.19	31.274		
5,900.0	5,667.5	5,934.8	5,667.5	23.9	24.8	179.43	-690.7	1,006.1	1,319.6	1,277.2	42.36	31.150		
6,000.0	5,767.5	6,034.8	5,767.5	23.9	24.8	179.43	-690.7	1,006.1	1,319.6	1,277.0	42.53	31.025		
6,046.7	5,814.2	6,081.4	5,814.2	24.0	24.9	179.43	-690.7	1,006.1	1,319.6	1,277.0	42.61	30.966		
6,100.0	5,867.5	6,097.2	5,830.0	24.0	24.9	179.43	-690.7	1,006.1	1,320.1	1,277.4	42.67	30.935		
6,122.5	5,890.0	6,097.2	5,830.0	24.0	24.9	179.43	-690.7	1,006.1	1,320.9	1,278.2	42.69	30.940		

Cathedral Energy Services

Anticollision Report

Company:	Caerus Oil & Gas (NAD 27)	Local Co-ordinate Reference:	Well Nolte 13D-13
Project:	Garfield County, CO	TVD Reference:	WELL @ 5117.8ft (Original Well Elev)
Reference Site:	S14-T7S-R96W	MD Reference:	WELL @ 5117.8ft (Original Well Elev)
Site Error:	0.0ft	North Reference:	True
Reference Well:	Nolte 13D-13	Survey Calculation Method:	Minimum Curvature
Well Error:	0.0ft	Output errors are at	2.00 sigma
Reference Wellbore	DD	Database:	USA EDM 5000 Multi Users DB
Reference Design:	Plan #3	Offset TVD Reference:	Offset Datum

Offset Design S14-T7S-R96W - Nolte 43A-14 - DD - Plan #3													Offset Site Error:	0.0 ft
Survey Program: 0-MWD													Offset Well Error:	0.0 ft
Reference		Offset		Semi Major Axis			Distance				Total	Separation	Warning	
Measured Depth (ft)	Vertical Depth (ft)	Measured Depth (ft)	Vertical Depth (ft)	Reference (ft)	Offset (ft)	Highside Toolface (°)	Offset Wellbore Centre +N/-S (ft)	+E/-W (ft)	Between Centres (ft)	Between Ellipses (ft)	Uncertainty Axis	Factor		
0.0	0.0	0.0	0.0	0.0	0.0	-101.11	-2.5	-12.6	12.8					
100.0	100.0	100.0	100.0	0.1	0.1	-101.11	-2.5	-12.6	12.8	12.6	0.25	50.336		
200.0	200.0	200.0	200.0	0.3	0.3	-101.11	-2.5	-12.6	12.8	12.2	0.60	21.224		
300.0	300.0	300.0	300.0	0.5	0.5	-101.11	-2.5	-12.6	12.8	11.9	0.95	13.447 CC, ES		
400.0	400.0	399.9	399.9	0.7	0.7	-152.50	0.1	-13.1	15.3	14.0	1.31	11.723 SF		
500.0	499.6	499.3	498.9	0.9	0.9	-142.19	7.7	-14.6	23.5	21.8	1.70	13.799		
600.0	598.8	597.7	596.5	1.1	1.1	-135.16	20.3	-17.0	37.7	35.6	2.18	17.336		
700.0	697.1	694.6	691.8	1.5	1.5	-131.03	37.4	-20.3	57.9	55.1	2.75	21.019		
800.0	794.3	789.5	784.2	1.9	1.9	-128.47	58.8	-24.5	83.6	80.2	3.44	24.284		
900.0	890.2	882.1	873.2	2.5	2.3	-126.70	83.9	-29.4	114.9	110.6	4.25	26.993		
1,000.0	984.4	972.2	958.4	3.1	2.9	-125.31	112.4	-35.0	151.2	146.1	5.18	29.195		
1,100.0	1,076.8	1,059.3	1,039.5	3.8	3.5	-124.10	143.7	-41.1	192.6	186.3	6.21	30.986		
1,200.0	1,167.6	1,143.7	1,116.5	4.6	4.1	-123.63	177.5	-47.7	237.9	230.6	7.33	32.467		
1,300.0	1,258.4	1,225.9	1,190.1	5.4	4.8	-122.87	213.6	-54.7	285.3	276.8	8.49	33.589		
1,400.0	1,349.1	1,306.0	1,260.1	6.1	5.4	-121.75	251.6	-62.1	334.6	324.9	9.69	34.525		
1,500.0	1,439.9	1,383.5	1,326.3	6.9	6.2	-120.46	291.2	-69.9	386.0	375.1	10.92	35.342		
1,600.0	1,530.6	1,458.5	1,388.7	7.7	6.9	-119.09	331.9	-77.8	439.5	427.3	12.17	36.121		
1,700.0	1,621.4	1,530.8	1,447.4	8.5	7.7	-117.71	373.5	-85.9	494.9	481.5	13.41	36.909		
1,800.0	1,712.1	1,600.0	1,501.9	9.3	8.5	-116.36	415.3	-94.1	552.5	537.8	14.64	37.730		
1,900.0	1,802.8	1,670.3	1,555.8	10.1	9.3	-114.98	459.6	-102.7	611.9	596.1	15.89	38.507		
2,000.0	1,893.6	1,749.1	1,615.7	10.9	10.2	-113.63	509.9	-112.5	672.2	655.0	17.19	39.092		
2,100.0	1,984.3	1,828.0	1,675.6	11.7	11.1	-112.49	560.3	-122.4	732.6	714.2	18.49	39.625		
2,200.0	2,075.1	1,906.9	1,735.5	12.5	12.0	-111.52	610.6	-132.2	793.2	773.5	19.78	40.110		
2,300.0	2,165.8	1,985.8	1,795.4	13.3	12.9	-110.69	660.9	-142.0	854.0	832.9	21.06	40.550		
2,400.0	2,256.6	2,064.6	1,855.4	14.1	13.8	-109.97	711.2	-151.8	914.8	892.5	22.34	40.951		
2,500.0	2,347.3	2,143.5	1,915.3	14.9	14.7	-109.34	761.6	-161.6	975.7	952.1	23.61	41.319		
2,600.0	2,438.1	2,222.4	1,975.2	15.6	15.6	-108.78	811.9	-171.5	1,036.7	1,011.8	24.89	41.655		
2,700.0	2,528.8	2,301.2	2,035.1	16.4	16.5	-108.28	862.2	-181.3	1,097.7	1,071.6	26.16	41.965		
2,800.0	2,619.5	2,380.1	2,095.1	17.2	17.4	-107.84	912.6	-191.1	1,158.8	1,131.4	27.43	42.250		
2,900.0	2,710.3	2,459.0	2,155.0	18.0	18.3	-107.43	962.9	-200.9	1,220.0	1,191.3	28.70	42.514		
3,000.0	2,801.0	2,537.8	2,214.9	18.8	19.2	-107.07	1,013.2	-210.7	1,281.1	1,251.1	29.96	42.758		
3,100.0	2,891.8	2,616.7	2,274.8	19.6	20.1	-107.09	1,063.6	-220.6	1,342.3	1,311.0	31.29	42.899		

Cathedral Energy Services

Anticollision Report

Company:	Caerus Oil & Gas (NAD 27)	Local Co-ordinate Reference:	Well Nolte 13D-13
Project:	Garfield County, CO	TVD Reference:	WELL @ 5117.8ft (Original Well Elev)
Reference Site:	S14-T7S-R96W	MD Reference:	WELL @ 5117.8ft (Original Well Elev)
Site Error:	0.0ft	North Reference:	True
Reference Well:	Nolte 13D-13	Survey Calculation Method:	Minimum Curvature
Well Error:	0.0ft	Output errors are at	2.00 sigma
Reference Wellbore	DD	Database:	USA EDM 5000 Multi Users DB
Reference Design:	Plan #3	Offset TVD Reference:	Offset Datum

Offset Design S14-T7S-R96W - Nolte 43B-14 - DD - Plan #3													Offset Site Error:	0.0 ft
Survey Program: 0-MWD													Offset Well Error:	0.0 ft
Reference		Offset		Semi Major Axis			Distance					Total Uncertainty Axis	Separation Factor	Warning
Measured Depth (ft)	Vertical Depth (ft)	Measured Depth (ft)	Vertical Depth (ft)	Reference (ft)	Offset (ft)	Highside Toolface (°)	Offset Wellbore Centre +N/-S (ft)	+E/-W (ft)	Between Centres (ft)	Between Ellipses (ft)				
0.0	0.0	0.0	0.0	0.0	0.0	-120.43	-9.6	-16.3	18.9					
100.0	100.0	100.0	100.0	0.1	0.1	-120.43	-9.6	-16.3	18.9	18.6	0.25	74.109		
200.0	200.0	200.0	200.0	0.3	0.3	-120.43	-9.6	-16.3	18.9	18.3	0.60	31.257		
300.0	300.0	300.0	300.0	0.5	0.5	-120.43	-9.6	-16.3	18.9	17.9	0.95	19.805 CC, ES		
400.0	400.0	400.1	400.1	0.7	0.7	-176.63	-8.9	-16.4	21.3	20.0	1.30	16.366 SF		
500.0	499.6	500.0	499.9	0.9	0.8	-167.20	-3.8	-17.6	28.1	26.4	1.66	16.881		
600.0	598.8	599.1	598.4	1.1	1.1	-156.41	6.2	-20.0	40.3	38.3	2.08	19.377		
700.0	697.1	696.8	694.9	1.5	1.4	-148.14	21.0	-23.4	58.8	56.2	2.60	22.607		
800.0	794.3	792.6	788.6	1.9	1.7	-142.40	40.1	-27.9	83.3	80.0	3.23	25.743		
900.0	890.2	886.1	879.1	2.5	2.2	-138.35	63.2	-33.3	113.6	109.6	3.99	28.458		
1,000.0	984.4	977.0	965.8	3.1	2.6	-135.33	89.7	-39.6	149.5	144.7	4.87	30.708		
1,100.0	1,076.8	1,064.9	1,048.3	3.8	3.2	-132.94	119.2	-46.5	190.6	184.8	5.86	32.555		
1,200.0	1,167.6	1,150.0	1,126.8	4.6	3.8	-131.51	151.2	-54.0	235.9	229.0	6.93	34.053		
1,300.0	1,258.4	1,233.0	1,201.9	5.4	4.4	-130.02	185.7	-62.1	283.1	275.0	8.07	35.096		
1,400.0	1,349.1	1,313.8	1,273.4	6.1	5.1	-128.36	222.2	-70.6	332.1	322.9	9.25	35.910		
1,500.0	1,439.9	1,392.1	1,341.2	6.9	5.8	-126.63	260.5	-79.6	383.1	372.7	10.47	36.606		
1,600.0	1,530.6	1,474.7	1,411.4	7.7	6.6	-124.90	302.8	-89.5	435.6	423.9	11.72	37.155		
1,700.0	1,621.4	1,559.1	1,483.1	8.5	7.4	-123.49	346.1	-99.7	488.4	475.4	12.99	37.594		
1,800.0	1,712.1	1,643.5	1,554.8	9.3	8.1	-122.36	389.4	-109.8	541.4	527.1	14.25	37.977		
1,900.0	1,802.8	1,727.9	1,626.5	10.1	8.9	-121.42	432.7	-120.0	594.4	578.9	15.52	38.314		
2,000.0	1,893.6	1,812.2	1,698.2	10.9	9.7	-120.64	476.0	-130.1	647.6	630.9	16.77	38.610		
2,100.0	1,984.3	1,896.6	1,769.9	11.7	10.5	-119.98	519.3	-140.3	700.9	682.9	18.03	38.872		
2,200.0	2,075.1	1,981.0	1,841.7	12.5	11.3	-119.41	562.6	-150.4	754.2	734.9	19.29	39.105		
2,300.0	2,165.8	2,065.4	1,913.4	13.3	12.1	-118.91	605.9	-160.6	807.6	787.0	20.54	39.314		
2,400.0	2,256.6	2,149.8	1,985.1	14.1	12.9	-118.48	649.1	-170.7	861.0	839.2	21.80	39.502		
2,500.0	2,347.3	2,234.1	2,056.8	14.9	13.7	-118.09	692.4	-180.9	914.4	891.3	23.05	39.672		
2,600.0	2,438.1	2,318.5	2,128.5	15.6	14.4	-117.75	735.7	-191.0	967.8	943.5	24.30	39.827		
2,700.0	2,528.8	2,402.9	2,200.2	16.4	15.2	-117.44	779.0	-201.2	1,021.3	995.8	25.55	39.968		
2,800.0	2,619.5	2,487.3	2,271.9	17.2	16.0	-117.17	822.3	-211.4	1,074.8	1,048.0	26.81	40.097		
2,900.0	2,710.3	2,571.7	2,343.6	18.0	16.8	-116.92	865.6	-221.5	1,128.3	1,100.3	28.06	40.215		
3,000.0	2,801.0	2,656.0	2,415.3	18.8	17.6	-116.69	908.9	-231.7	1,181.9	1,152.5	29.31	40.324		
3,100.0	2,891.8	2,740.4	2,487.0	19.6	18.4	-116.75	952.2	-241.8	1,235.4	1,204.8	30.59	40.379		
3,200.0	2,983.9	2,825.4	2,559.3	20.3	19.2	-118.03	995.9	-252.0	1,287.6	1,255.6	31.98	40.263		
3,300.0	3,078.0	2,911.2	2,632.2	20.9	20.0	-119.01	1,039.9	-262.4	1,337.8	1,304.5	33.28	40.197		

Cathedral Energy Services

Anticollision Report

Company:	Caerus Oil & Gas (NAD 27)	Local Co-ordinate Reference:	Well Nolte 13D-13
Project:	Garfield County, CO	TVD Reference:	WELL @ 5117.8ft (Original Well Elev)
Reference Site:	S14-T7S-R96W	MD Reference:	WELL @ 5117.8ft (Original Well Elev)
Site Error:	0.0ft	North Reference:	True
Reference Well:	Nolte 13D-13	Survey Calculation Method:	Minimum Curvature
Well Error:	0.0ft	Output errors are at	2.00 sigma
Reference Wellbore	DD	Database:	USA EDM 5000 Multi Users DB
Reference Design:	Plan #3	Offset TVD Reference:	Offset Datum

Offset Design S14-T7S-R96W - Nolte 43C-14 - DD - Plan #3													Offset Site Error:	0.0 ft
Survey Program:		0-MWD											Offset Well Error:	0.0 ft
Reference		Offset		Semi Major Axis			Distance						Warning	
Measured Depth (ft)	Vertical Depth (ft)	Measured Depth (ft)	Vertical Depth (ft)	Reference (ft)	Offset (ft)	Highside Toolface (°)	Offset Wellbore Centre +N/-S (ft)	+E/-W (ft)	Between Centres (ft)	Between Ellipses (ft)	Total Uncertainty Axis	Separation Factor		
0.0	0.0	0.0	0.0	0.0	0.0	-129.86	-16.6	-19.9	26.0					
100.0	100.0	100.0	100.0	0.1	0.1	-129.86	-16.6	-19.9	26.0	25.7	0.25	101.966		
200.0	200.0	200.0	200.0	0.3	0.3	-129.86	-16.6	-19.9	26.0	25.4	0.60	43.021		
300.0	300.0	300.0	300.0	0.5	0.5	-129.86	-16.6	-19.9	26.0	25.0	0.95	27.262 CC, ES		
400.0	400.0	400.0	400.0	0.7	0.7	173.16	-16.6	-19.9	28.6	27.3	1.30	21.965		
500.0	499.6	500.1	500.1	0.9	0.8	178.66	-14.2	-20.8	35.7	34.0	1.65	21.606 SF		
600.0	598.8	599.5	599.1	1.1	1.0	-171.72	-6.9	-23.5	47.5	45.5	2.03	23.468		
700.0	697.1	697.4	696.2	1.5	1.3	-162.55	5.1	-27.9	65.5	63.0	2.47	26.522		
800.0	794.3	793.4	790.6	1.9	1.6	-155.33	21.3	-33.8	89.9	86.9	3.01	29.825		
900.0	890.2	886.8	881.6	2.5	2.0	-149.92	41.3	-41.1	120.7	117.0	3.68	32.835		
1,000.0	984.4	977.3	968.6	3.1	2.4	-145.82	64.7	-49.7	157.7	153.2	4.45	35.389		
1,100.0	1,076.8	1,065.8	1,052.5	3.8	2.9	-142.63	91.0	-59.3	200.3	194.9	5.32	37.638		
1,200.0	1,167.6	1,154.5	1,136.4	4.6	3.4	-141.22	118.2	-69.2	246.1	239.9	6.24	39.441		
1,300.0	1,258.4	1,243.2	1,220.3	5.4	3.9	-140.46	145.3	-79.1	292.2	285.0	7.18	40.683		
1,400.0	1,349.1	1,331.9	1,304.1	6.1	4.4	-139.91	172.4	-89.0	338.3	330.1	8.14	41.581		
1,500.0	1,439.9	1,420.7	1,388.0	6.9	5.0	-139.49	199.6	-98.9	384.4	375.3	9.10	42.257		
1,600.0	1,530.6	1,509.4	1,471.9	7.7	5.5	-139.16	226.7	-108.8	430.5	420.4	10.06	42.781		
1,700.0	1,621.4	1,598.1	1,555.7	8.5	6.0	-138.90	253.9	-118.8	476.6	465.6	11.03	43.197		
1,800.0	1,712.1	1,686.8	1,639.6	9.3	6.5	-138.68	281.0	-128.7	522.8	510.8	12.01	43.535		
1,900.0	1,802.8	1,775.5	1,723.5	10.1	7.0	-138.49	308.1	-138.6	568.9	555.9	12.98	43.815		
2,000.0	1,893.6	1,864.2	1,807.3	10.9	7.6	-138.34	335.3	-148.5	615.1	601.1	13.96	44.050		
2,100.0	1,984.3	1,952.9	1,891.2	11.7	8.1	-138.20	362.4	-158.4	661.2	646.3	14.94	44.249		
2,200.0	2,075.1	2,041.6	1,975.1	12.5	8.6	-138.09	389.6	-168.3	707.4	691.4	15.92	44.421		
2,300.0	2,165.8	2,130.3	2,058.9	13.3	9.1	-137.99	416.7	-178.2	753.5	736.6	16.91	44.571		
2,400.0	2,256.6	2,219.0	2,142.8	14.1	9.7	-137.89	443.8	-188.1	799.7	781.8	17.89	44.701		
2,500.0	2,347.3	2,307.7	2,226.7	14.9	10.2	-137.81	471.0	-198.1	845.8	826.9	18.87	44.817		
2,600.0	2,438.1	2,396.4	2,310.5	15.6	10.7	-137.74	498.1	-208.0	892.0	872.1	19.86	44.920		
2,700.0	2,528.8	2,485.1	2,394.4	16.4	11.3	-137.68	525.3	-217.9	938.1	917.3	20.84	45.011		
2,800.0	2,619.5	2,573.8	2,478.3	17.2	11.8	-137.62	552.4	-227.8	984.3	962.5	21.83	45.094		
2,900.0	2,710.3	2,662.5	2,562.1	18.0	12.3	-137.56	579.5	-237.7	1,030.4	1,007.6	22.81	45.169		
3,000.0	2,801.0	2,751.2	2,646.0	18.8	12.8	-137.51	606.7	-247.6	1,076.6	1,052.8	23.80	45.237		
3,100.0	2,891.8	2,840.0	2,729.9	19.6	13.4	-137.63	633.8	-257.5	1,122.7	1,097.9	24.79	45.282		
3,200.0	2,983.9	2,929.8	2,814.8	20.3	13.9	-138.44	661.3	-267.6	1,166.6	1,140.8	25.79	45.230		
3,300.0	3,078.0	3,021.0	2,901.1	20.9	14.4	-138.98	689.2	-277.8	1,207.0	1,180.2	26.76	45.096		
3,400.0	3,173.6	3,113.5	2,988.5	21.4	15.0	-139.27	717.5	-288.1	1,243.7	1,216.0	27.70	44.893		
3,500.0	3,270.7	3,230.3	3,099.4	21.8	15.6	-139.23	751.9	-300.7	1,276.4	1,247.7	28.70	44.475		
3,600.0	3,368.9	3,370.8	3,235.4	22.1	16.3	-139.10	785.3	-312.9	1,302.5	1,272.9	29.60	43.997		
3,700.0	3,468.0	3,516.2	3,378.3	22.4	16.7	-139.03	809.9	-321.8	1,321.4	1,291.1	30.29	43.620		
3,800.0	3,567.6	3,664.9	3,526.2	22.5	17.0	-139.02	824.3	-327.1	1,332.8	1,302.0	30.74	43.363		
3,900.0	3,667.5	3,806.3	3,667.5	22.6	17.1	-139.08	828.1	-328.5	1,336.5	1,305.6	30.95	43.186		
4,000.0	3,767.5	3,906.3	3,767.5	22.6	17.2	-81.43	828.1	-328.5	1,336.5	1,305.4	31.10	42.978		
4,100.0	3,867.5	4,006.3	3,867.5	22.7	17.2	-81.43	828.1	-328.5	1,336.5	1,305.3	31.25	42.764		
4,200.0	3,967.5	4,106.3	3,967.5	22.7	17.3	-81.43	828.1	-328.5	1,336.5	1,305.1	31.41	42.548		
4,300.0	4,067.5	4,206.3	4,067.5	22.8	17.4	-81.43	828.1	-328.5	1,336.5	1,305.0	31.57	42.330		
4,400.0	4,167.5	4,306.3	4,167.5	22.9	17.5	-81.43	828.1	-328.5	1,336.5	1,304.8	31.74	42.111		
4,500.0	4,267.5	4,406.3	4,267.5	22.9	17.5	-81.43	828.1	-328.5	1,336.5	1,304.6	31.91	41.890		
4,600.0	4,367.5	4,506.3	4,367.5	23.0	17.6	-81.43	828.1	-328.5	1,336.5	1,304.5	32.08	41.667		
4,700.0	4,467.5	4,606.3	4,467.5	23.0	17.7	-81.43	828.1	-328.5	1,336.5	1,304.3	32.25	41.443		
4,800.0	4,567.5	4,706.3	4,567.5	23.1	17.8	-81.43	828.1	-328.5	1,336.5	1,304.1	32.43	41.218		
4,900.0	4,667.5	4,806.3	4,667.5	23.2	17.9	-81.43	828.1	-328.5	1,336.5	1,303.9	32.61	40.992		
5,000.0	4,767.5	4,906.3	4,767.5	23.2	17.9	-81.43	828.1	-328.5	1,336.5	1,303.8	32.79	40.764		
5,100.0	4,867.5	5,006.3	4,867.5	23.3	18.0	-81.43	828.1	-328.5	1,336.5	1,303.6	32.97	40.536		

CC - Min centre to center distance or convergent point, SF - min separation factor, ES - min ellipse separation

Cathedral Energy Services

Anticollision Report

Company:	Caerus Oil & Gas (NAD 27)	Local Co-ordinate Reference:	Well Nolte 13D-13
Project:	Garfield County, CO	TVD Reference:	WELL @ 5117.8ft (Original Well Elev)
Reference Site:	S14-T7S-R96W	MD Reference:	WELL @ 5117.8ft (Original Well Elev)
Site Error:	0.0ft	North Reference:	True
Reference Well:	Nolte 13D-13	Survey Calculation Method:	Minimum Curvature
Well Error:	0.0ft	Output errors are at	2.00 sigma
Reference Wellbore	DD	Database:	USA EDM 5000 Multi Users DB
Reference Design:	Plan #3	Offset TVD Reference:	Offset Datum

Offset Design S14-T7S-R96W - Nolte 43C-14 - DD - Plan #3													Offset Site Error:	0.0 ft
Survey Program: 0-MWD													Offset Well Error:	0.0 ft
Reference		Offset		Semi Major Axis			Distance						Warning	
Measured Depth (ft)	Vertical Depth (ft)	Measured Depth (ft)	Vertical Depth (ft)	Reference (ft)	Offset (ft)	Highside Toolface (°)	Offset Wellbore Centre +N/-S (ft)	+E/-W (ft)	Between Centres (ft)	Between Ellipses (ft)	Total Uncertainty Axis	Separation Factor		
5,200.0	4,967.5	5,106.3	4,967.5	23.4	18.1	-81.43	828.1	-328.5	1,336.5	1,303.4	33.16	40.308		
5,300.0	5,067.5	5,206.3	5,067.5	23.4	18.2	-81.43	828.1	-328.5	1,336.5	1,303.2	33.35	40.079		
5,400.0	5,167.5	5,306.3	5,167.5	23.5	18.3	-81.43	828.1	-328.5	1,336.5	1,303.0	33.54	39.849		
5,500.0	5,267.5	5,406.3	5,267.5	23.6	18.4	-81.43	828.1	-328.5	1,336.5	1,302.8	33.74	39.619		
5,600.0	5,367.5	5,506.3	5,367.5	23.6	18.5	-81.43	828.1	-328.5	1,336.5	1,302.6	33.93	39.389		
5,700.0	5,467.5	5,606.3	5,467.5	23.7	18.5	-81.43	828.1	-328.5	1,336.5	1,302.4	34.13	39.158		
5,800.0	5,567.5	5,706.3	5,567.5	23.8	18.6	-81.43	828.1	-328.5	1,336.5	1,302.2	34.33	38.928		
5,900.0	5,667.5	5,806.3	5,667.5	23.9	18.7	-81.43	828.1	-328.5	1,336.5	1,302.0	34.54	38.697		
6,000.0	5,767.5	5,906.3	5,767.5	23.9	18.8	-81.43	828.1	-328.5	1,336.5	1,301.8	34.75	38.467		
6,059.6	5,827.1	5,965.9	5,827.1	24.0	18.9	-81.43	828.1	-328.5	1,336.5	1,301.7	34.87	38.330		
6,100.0	5,867.5	5,988.8	5,850.0	24.0	18.9	-81.43	828.1	-328.5	1,336.7	1,301.7	34.94	38.261		
6,122.5	5,890.0	5,988.8	5,850.0	24.0	18.9	-81.43	828.1	-328.5	1,337.1	1,302.2	34.96	38.249		

Cathedral Energy Services

Anticollision Report

Company:	Caerus Oil & Gas (NAD 27)	Local Co-ordinate Reference:	Well Nolte 13D-13
Project:	Garfield County, CO	TVD Reference:	WELL @ 5117.8ft (Original Well Elev)
Reference Site:	S14-T7S-R96W	MD Reference:	WELL @ 5117.8ft (Original Well Elev)
Site Error:	0.0ft	North Reference:	True
Reference Well:	Nolte 13D-13	Survey Calculation Method:	Minimum Curvature
Well Error:	0.0ft	Output errors are at	2.00 sigma
Reference Wellbore	DD	Database:	USA EDM 5000 Multi Users DB
Reference Design:	Plan #3	Offset TVD Reference:	Offset Datum

Offset Design S14-T7S-R96W - Nolte 44A-14 - DD - Plan #3													Offset Site Error:	0.0 ft
Survey Program: 0-MWD													Offset Well Error:	0.0 ft
Reference		Offset		Semi Major Axis			Distance					Total Uncertainty Axis	Separation Factor	Warning
Measured Depth (ft)	Vertical Depth (ft)	Measured Depth (ft)	Vertical Depth (ft)	Reference (ft)	Offset (ft)	Highside Toolface (°)	Offset Wellbore Centre +N/-S (ft)	+E/-W (ft)	Between Centres (ft)	Between Ellipses (ft)				
0.0	0.0	0.0	0.0	0.0	0.0	-135.12	-23.7	-23.6	33.5					
100.0	100.0	100.0	100.0	0.1	0.1	-135.12	-23.7	-23.6	33.5	33.2	0.25	131.391		
200.0	200.0	200.0	200.0	0.3	0.3	-135.12	-23.7	-23.6	33.5	32.9	0.60	55.465		
300.0	300.0	300.0	300.0	0.5	0.5	-135.12	-23.7	-23.6	33.5	32.6	0.95	35.152 CC, ES		
400.0	400.0	400.0	400.0	0.7	0.7	168.13	-23.7	-23.6	36.1	34.8	1.30	27.711		
500.0	499.6	499.8	499.8	0.9	0.8	170.76	-23.4	-23.9	43.7	42.0	1.65	26.513 SF		
600.0	598.8	599.2	599.1	1.1	1.0	176.35	-20.4	-25.5	56.1	54.1	1.99	28.158		
700.0	697.1	697.4	697.1	1.5	1.2	-177.42	-14.4	-28.9	73.9	71.6	2.35	31.497		
800.0	794.3	794.2	793.3	1.9	1.4	-171.93	-5.7	-33.8	97.6	94.8	2.73	35.720		
900.0	890.2	888.9	887.2	2.5	1.7	-167.46	5.5	-40.1	127.1	124.0	3.17	40.156		
1,000.0	984.4	981.2	978.2	3.1	2.0	-163.90	19.1	-47.7	162.5	158.8	3.66	44.353		
1,100.0	1,076.8	1,070.8	1,066.0	3.8	2.3	-161.03	34.7	-56.5	203.5	199.2	4.23	48.079		
1,200.0	1,167.6	1,157.9	1,150.7	4.6	2.6	-158.92	52.1	-66.3	248.7	243.8	4.89	50.855		
1,300.0	1,258.4	1,243.7	1,233.6	5.4	3.0	-157.03	71.5	-77.2	295.1	289.5	5.63	52.436		
1,400.0	1,349.1	1,328.3	1,314.6	6.1	3.5	-155.21	92.7	-89.1	342.5	336.1	6.43	53.290		
1,500.0	1,439.9	1,412.1	1,394.2	6.9	3.9	-153.45	115.8	-102.0	391.1	383.8	7.28	53.696		
1,600.0	1,530.6	1,498.7	1,476.1	7.7	4.4	-151.92	140.2	-115.8	440.2	432.0	8.17	53.853		
1,700.0	1,621.4	1,585.3	1,558.0	8.5	4.9	-150.69	164.7	-129.5	489.5	480.4	9.07	53.952		
1,800.0	1,712.1	1,671.8	1,639.8	9.3	5.4	-149.68	189.1	-143.3	539.0	529.0	9.98	54.024		
1,900.0	1,802.8	1,758.4	1,721.7	10.1	5.9	-148.84	213.6	-157.0	588.5	577.6	10.88	54.078		
2,000.0	1,893.6	1,845.0	1,803.6	10.9	6.4	-148.13	238.0	-170.7	638.1	626.3	11.79	54.119		
2,100.0	1,984.3	1,931.5	1,885.5	11.7	6.9	-147.52	262.5	-184.5	687.8	675.1	12.70	54.152		
2,200.0	2,075.1	2,018.1	1,967.4	12.5	7.4	-147.00	286.9	-198.2	737.6	724.0	13.61	54.180		
2,300.0	2,165.8	2,104.6	2,049.3	13.3	7.9	-146.54	311.4	-212.0	787.4	772.8	14.53	54.203		
2,400.0	2,256.6	2,191.2	2,131.2	14.1	8.4	-146.13	335.8	-225.7	837.2	821.7	15.44	54.222		
2,500.0	2,347.3	2,277.8	2,213.1	14.9	8.9	-145.77	360.3	-239.4	887.0	870.7	16.35	54.238		
2,600.0	2,438.1	2,368.8	2,299.3	15.6	9.5	-145.44	385.9	-253.8	936.8	919.6	17.28	54.204		
2,700.0	2,528.8	2,472.6	2,398.3	16.4	10.0	-145.27	412.8	-268.9	985.6	967.4	18.21	54.127		
2,800.0	2,619.5	2,578.3	2,500.4	17.2	10.5	-145.33	436.9	-282.5	1,032.8	1,013.7	19.07	54.166		
2,900.0	2,710.3	2,685.9	2,605.2	18.0	10.9	-145.59	458.1	-294.4	1,078.4	1,058.6	19.85	54.318		
3,000.0	2,801.0	2,795.0	2,712.3	18.8	11.3	-146.04	476.1	-304.5	1,122.6	1,102.0	20.57	54.584		
3,100.0	2,891.8	2,905.4	2,821.4	19.6	11.6	-146.77	490.6	-312.7	1,165.1	1,143.9	21.20	54.948		
3,200.0	2,983.9	3,018.3	2,933.6	20.3	11.9	-148.09	501.7	-318.9	1,203.4	1,181.7	21.78	55.252		
3,300.0	3,078.0	3,134.2	3,049.2	20.9	12.1	-149.28	509.1	-323.1	1,236.1	1,213.8	22.25	55.553		
3,400.0	3,173.6	3,252.5	3,167.4	21.4	12.2	-150.36	512.4	-324.9	1,262.8	1,240.2	22.61	55.862		
3,500.0	3,270.7	3,355.8	3,270.7	21.8	12.3	-151.23	512.6	-325.0	1,284.0	1,261.1	22.89	56.098		
3,600.0	3,368.9	3,454.0	3,368.9	22.1	12.4	-151.87	512.6	-325.0	1,300.6	1,277.5	23.14	56.207		
3,700.0	3,468.0	3,553.0	3,468.0	22.4	12.5	-152.32	512.6	-325.0	1,312.8	1,289.4	23.36	56.188		
3,800.0	3,567.6	3,652.7	3,567.6	22.5	12.5	-152.59	512.6	-325.0	1,320.3	1,296.7	23.56	56.040		
3,900.0	3,667.5	3,752.6	3,667.5	22.6	12.6	-152.70	512.6	-325.0	1,323.2	1,299.5	23.73	55.760		
4,000.0	3,767.5	3,852.6	3,767.5	22.6	12.7	-95.04	512.6	-325.0	1,323.2	1,299.3	23.92	55.310		
4,100.0	3,867.5	3,952.6	3,867.5	22.7	12.8	-95.04	512.6	-325.0	1,323.2	1,299.1	24.12	54.851		
4,200.0	3,967.5	4,052.6	3,967.5	22.7	12.9	-95.04	512.6	-325.0	1,323.2	1,298.9	24.33	54.391		
4,300.0	4,067.5	4,152.6	4,067.5	22.8	13.0	-95.04	512.6	-325.0	1,323.2	1,298.7	24.53	53.933		
4,400.0	4,167.5	4,252.6	4,167.5	22.9	13.1	-95.04	512.6	-325.0	1,323.2	1,298.5	24.75	53.475		
4,500.0	4,267.5	4,352.6	4,267.5	22.9	13.2	-95.04	512.6	-325.0	1,323.2	1,298.3	24.96	53.018		
4,600.0	4,367.5	4,452.6	4,367.5	23.0	13.3	-95.04	512.6	-325.0	1,323.2	1,298.1	25.17	52.562		
4,700.0	4,467.5	4,552.6	4,467.5	23.0	13.4	-95.04	512.6	-325.0	1,323.2	1,297.8	25.39	52.109		
4,800.0	4,567.5	4,652.6	4,567.5	23.1	13.5	-95.04	512.6	-325.0	1,323.2	1,297.6	25.62	51.657		
4,900.0	4,667.5	4,752.6	4,667.5	23.2	13.6	-95.04	512.6	-325.0	1,323.2	1,297.4	25.84	51.207		
5,000.0	4,767.5	4,852.6	4,767.5	23.2	13.7	-95.04	512.6	-325.0	1,323.2	1,297.2	26.07	50.760		
5,100.0	4,867.5	4,952.6	4,867.5	23.3	13.8	-95.04	512.6	-325.0	1,323.2	1,296.9	26.30	50.315		

CC - Min centre to center distance or convergent point, SF - min separation factor, ES - min ellipse separation

Cathedral Energy Services

Anticollision Report

Company:	Caerus Oil & Gas (NAD 27)	Local Co-ordinate Reference:	Well Nolte 13D-13
Project:	Garfield County, CO	TVD Reference:	WELL @ 5117.8ft (Original Well Elev)
Reference Site:	S14-T7S-R96W	MD Reference:	WELL @ 5117.8ft (Original Well Elev)
Site Error:	0.0ft	North Reference:	True
Reference Well:	Nolte 13D-13	Survey Calculation Method:	Minimum Curvature
Well Error:	0.0ft	Output errors are at	2.00 sigma
Reference Wellbore	DD	Database:	USA EDM 5000 Multi Users DB
Reference Design:	Plan #3	Offset TVD Reference:	Offset Datum

Offset Design S14-T7S-R96W - Nolte 44A-14 - DD - Plan #3													Offset Site Error:	0.0 ft
Survey Program: 0-MWD													Offset Well Error:	0.0 ft
Reference		Offset		Semi Major Axis			Distance						Warning	
Measured Depth (ft)	Vertical Depth (ft)	Measured Depth (ft)	Vertical Depth (ft)	Reference (ft)	Offset (ft)	Highside Toolface (°)	Offset Wellbore Centre +N/-S (ft)	+E/-W (ft)	Between Centres (ft)	Between Ellipses (ft)	Total Uncertainty Axis	Separation Factor		
5,200.0	4,967.5	5,052.6	4,967.5	23.4	13.9	-95.04	512.6	-325.0	1,323.2	1,296.7	26.53	49.874		
5,300.0	5,067.5	5,152.6	5,067.5	23.4	14.0	-95.04	512.6	-325.0	1,323.2	1,296.5	26.77	49.435		
5,400.0	5,167.5	5,252.6	5,167.5	23.5	14.2	-95.04	512.6	-325.0	1,323.2	1,296.2	27.00	49.000		
5,500.0	5,267.5	5,352.6	5,267.5	23.6	14.3	-95.04	512.6	-325.0	1,323.2	1,296.0	27.25	48.568		
5,600.0	5,367.5	5,452.6	5,367.5	23.6	14.4	-95.04	512.6	-325.0	1,323.2	1,295.7	27.49	48.139		
5,700.0	5,467.5	5,552.6	5,467.5	23.7	14.5	-95.04	512.6	-325.0	1,323.2	1,295.5	27.73	47.714		
5,800.0	5,567.5	5,652.6	5,567.5	23.8	14.6	-95.04	512.6	-325.0	1,323.2	1,295.3	27.98	47.292		
5,900.0	5,667.5	5,752.6	5,667.5	23.9	14.7	-95.04	512.6	-325.0	1,323.2	1,295.0	28.23	46.875		
6,000.0	5,767.5	5,852.6	5,767.5	23.9	14.9	-95.04	512.6	-325.0	1,323.2	1,294.8	28.48	46.461		
6,054.0	5,821.5	5,906.6	5,821.5	24.0	14.9	-95.04	512.6	-325.0	1,323.2	1,294.6	28.62	46.239		
6,100.0	5,867.5	5,925.1	5,840.0	24.0	14.9	-95.04	512.6	-325.0	1,323.5	1,294.8	28.70	46.117		
6,122.5	5,890.0	5,925.1	5,840.0	24.0	14.9	-95.04	512.6	-325.0	1,324.2	1,295.4	28.73	46.094		

Cathedral Energy Services

Anticollision Report

Company:	Caerus Oil & Gas (NAD 27)	Local Co-ordinate Reference:	Well Nolte 13D-13
Project:	Garfield County, CO	TVD Reference:	WELL @ 5117.8ft (Original Well Elev)
Reference Site:	S14-T7S-R96W	MD Reference:	WELL @ 5117.8ft (Original Well Elev)
Site Error:	0.0ft	North Reference:	True
Reference Well:	Nolte 13D-13	Survey Calculation Method:	Minimum Curvature
Well Error:	0.0ft	Output errors are at	2.00 sigma
Reference Wellbore	DD	Database:	USA EDM 5000 Multi Users DB
Reference Design:	Plan #3	Offset TVD Reference:	Offset Datum

Offset Design S14-T7S-R96W - Nolte 44B-14 - DD - Plan #3													Offset Site Error: 0.0 ft	
Survey Program: 0-MWD													Offset Well Error: 0.0 ft	
Reference		Offset		Semi Major Axis			Distance							Warning
Measured Depth (ft)	Vertical Depth (ft)	Measured Depth (ft)	Vertical Depth (ft)	Reference (ft)	Offset (ft)	Highside Toolface (°)	Offset Wellbore Centre +N/-S (ft)	+E/-W (ft)	Between Centres (ft)	Between Ellipses (ft)	Total Uncertainty Axis	Separation Factor		
0.0	0.0	0.0	0.0	0.0	0.0	-138.44	-30.8	-27.3	41.2					
100.0	100.0	100.0	100.0	0.1	0.1	-138.44	-30.8	-27.3	41.2	41.0	0.26	161.532		
200.0	200.0	200.0	200.0	0.3	0.3	-138.44	-30.8	-27.3	41.2	40.6	0.60	68.210		
300.0	300.0	300.0	300.0	0.5	0.5	-138.44	-30.8	-27.3	41.2	40.3	0.95	43.233	CC, ES	
400.0	400.0	400.0	400.0	0.7	0.7	164.84	-30.8	-27.3	43.7	42.4	1.30	33.598		
500.0	499.6	499.6	499.6	0.9	0.8	167.08	-30.8	-27.3	51.3	49.7	1.65	31.152	SF	
600.0	598.8	597.7	597.6	1.1	1.0	171.72	-29.6	-29.5	64.9	63.0	1.99	32.631		
700.0	697.1	693.6	693.2	1.5	1.2	178.10	-26.0	-35.9	86.1	83.7	2.34	36.844		
800.0	794.3	788.3	787.4	1.9	1.4	-176.45	-20.6	-45.2	114.7	112.0	2.69	42.693		
900.0	890.2	882.0	880.4	2.5	1.6	-173.23	-15.3	-54.6	149.0	146.0	3.05	48.944		
1,000.0	984.4	973.8	971.6	3.1	1.9	-171.35	-10.0	-63.9	188.4	185.0	3.40	55.332		
1,100.0	1,076.8	1,063.5	1,060.7	3.8	2.1	-170.24	-4.9	-72.9	232.5	228.8	3.76	61.771		
1,200.0	1,167.6	1,151.4	1,148.0	4.6	2.3	-169.72	0.2	-81.8	280.1	275.9	4.15	67.419		
1,300.0	1,258.4	1,239.3	1,235.3	5.4	2.5	-169.42	5.2	-90.6	327.9	323.3	4.56	71.864		
1,400.0	1,349.1	1,327.1	1,322.5	6.1	2.7	-169.19	10.3	-99.5	375.6	370.6	4.97	75.522		
1,500.0	1,439.9	1,414.9	1,409.8	6.9	3.0	-169.01	15.3	-108.3	423.4	418.0	5.39	78.578		
1,600.0	1,530.6	1,502.8	1,497.0	7.7	3.2	-168.87	20.4	-117.2	471.2	465.3	5.80	81.165		
1,700.0	1,621.4	1,590.6	1,584.3	8.5	3.4	-168.76	25.4	-126.0	518.9	512.7	6.22	83.380		
1,800.0	1,712.1	1,678.5	1,671.5	9.3	3.7	-168.66	30.4	-134.9	566.7	560.0	6.64	85.296		
1,900.0	1,802.8	1,766.3	1,758.8	10.1	3.9	-168.58	35.5	-143.7	614.5	607.4	7.07	86.969		
2,000.0	1,893.6	1,854.2	1,846.1	10.9	4.1	-168.51	40.5	-152.5	662.2	654.8	7.49	88.442		
2,100.0	1,984.3	1,942.0	1,933.3	11.7	4.4	-168.45	45.6	-161.4	710.0	702.1	7.91	89.747		
2,200.0	2,075.1	2,029.9	2,020.6	12.5	4.6	-168.40	50.6	-170.2	757.8	749.5	8.34	90.912		
2,300.0	2,165.8	2,117.7	2,107.8	13.3	4.8	-168.36	55.7	-179.1	805.6	796.8	8.76	91.958		
2,400.0	2,256.6	2,205.6	2,195.1	14.1	5.1	-168.32	60.7	-187.9	853.3	844.2	9.19	92.902		
2,500.0	2,347.3	2,293.4	2,282.3	14.9	5.3	-168.28	65.7	-196.8	901.1	891.5	9.61	93.757		
2,600.0	2,438.1	2,381.3	2,369.6	15.6	5.5	-168.25	70.8	-205.6	948.9	938.9	10.04	94.536		
2,700.0	2,528.8	2,469.1	2,456.8	16.4	5.8	-168.22	75.8	-214.5	996.7	986.2	10.46	95.249		
2,800.0	2,619.5	2,557.0	2,544.1	17.2	6.0	-168.19	80.9	-223.3	1,044.4	1,033.6	10.89	95.903		
2,900.0	2,710.3	2,644.8	2,631.4	18.0	6.2	-168.17	85.9	-232.2	1,092.2	1,080.9	11.32	96.505		
3,000.0	2,801.0	2,732.7	2,718.6	18.8	6.5	-168.14	91.0	-241.0	1,140.0	1,128.3	11.75	97.061		
3,100.0	2,891.8	2,820.5	2,805.9	19.6	6.7	-168.17	96.0	-249.9	1,187.7	1,175.5	12.18	97.484		
3,200.0	2,983.9	2,909.9	2,894.7	20.3	6.9	-168.42	101.1	-258.9	1,232.5	1,219.8	12.67	97.248		
3,300.0	3,078.0	3,001.5	2,985.6	20.9	7.2	-168.58	106.4	-268.1	1,272.7	1,259.5	13.16	96.724		
3,400.0	3,173.6	3,094.9	3,078.4	21.4	7.4	-168.66	111.7	-277.5	1,308.1	1,294.4	13.63	95.954		
3,500.0	3,270.7	3,190.1	3,172.9	21.8	7.7	-168.66	117.2	-287.1	1,338.6	1,324.5	14.10	94.971		

Cathedral Energy Services

Anticollision Report

Company:	Caerus Oil & Gas (NAD 27)	Local Co-ordinate Reference:	Well Nolte 13D-13
Project:	Garfield County, CO	TVD Reference:	WELL @ 5117.8ft (Original Well Elev)
Reference Site:	S14-T7S-R96W	MD Reference:	WELL @ 5117.8ft (Original Well Elev)
Site Error:	0.0ft	North Reference:	True
Reference Well:	Nolte 13D-13	Survey Calculation Method:	Minimum Curvature
Well Error:	0.0ft	Output errors are at	2.00 sigma
Reference Wellbore	DD	Database:	USA EDM 5000 Multi Users DB
Reference Design:	Plan #3	Offset TVD Reference:	Offset Datum

Offset Design S14-T7S-R96W - Nolte 44C-14 - DD - Plan #3													Offset Site Error: 0.0 ft	
Survey Program: 0-MWD													Offset Well Error: 0.0 ft	
Reference		Offset		Semi Major Axis			Distance							Warning
Measured Depth (ft)	Vertical Depth (ft)	Measured Depth (ft)	Vertical Depth (ft)	Reference (ft)	Offset (ft)	Highside Toolface (°)	Offset Wellbore Centre +N/-S (ft)	+E/-W (ft)	Between Centres (ft)	Between Ellipses (ft)	Total Uncertainty Axis	Separation Factor		
0.0	0.0	0.0	0.0	0.0	0.0	-140.70	-37.9	-31.0	49.0					
100.0	100.0	100.0	100.0	0.1	0.1	-140.70	-37.9	-31.0	49.0	48.8	0.26	191.957		
200.0	200.0	200.0	200.0	0.3	0.3	-140.70	-37.9	-31.0	49.0	48.4	0.60	81.092		
300.0	300.0	300.0	300.0	0.5	0.5	-140.70	-37.9	-31.0	49.0	48.1	0.95	51.404	CC, ES	
400.0	400.0	400.0	400.0	0.7	0.7	162.54	-37.9	-31.0	51.5	50.2	1.30	39.555		
500.0	499.6	497.2	497.1	0.9	0.8	166.12	-38.4	-33.5	61.1	59.4	1.65	37.095	SF	
600.0	598.8	592.3	591.9	1.1	1.0	171.16	-39.7	-40.4	80.1	78.1	1.98	40.387		
700.0	697.1	685.2	684.3	1.5	1.2	173.58	-44.6	-49.0	108.3	106.0	2.31	46.976		
800.0	794.3	779.0	777.5	1.9	1.4	174.69	-51.2	-57.8	142.8	140.2	2.62	54.473		
900.0	890.2	870.8	868.7	2.5	1.7	175.47	-57.6	-66.6	182.3	179.3	2.93	62.260		
1,000.0	984.4	960.5	957.7	3.1	1.9	176.04	-63.9	-75.1	226.4	223.2	3.22	70.308		
1,100.0	1,076.8	1,047.7	1,044.3	3.8	2.1	176.47	-70.0	-83.3	275.3	271.8	3.50	78.615		
1,200.0	1,167.6	1,133.0	1,129.0	4.6	2.3	176.85	-76.0	-91.4	327.5	323.7	3.81	86.058		
1,300.0	1,258.4	1,218.2	1,213.6	5.4	2.6	177.16	-82.0	-99.5	379.9	375.7	4.12	92.178		
1,400.0	1,349.1	1,303.3	1,298.2	6.1	2.8	177.39	-88.0	-107.5	432.2	427.8	4.44	97.437		
1,500.0	1,439.9	1,388.5	1,382.8	6.9	3.0	177.57	-93.9	-115.6	484.6	479.9	4.75	102.002		
1,600.0	1,530.6	1,473.7	1,467.3	7.7	3.2	177.71	-99.9	-123.7	537.0	532.0	5.07	106.005		
1,700.0	1,621.4	1,558.8	1,551.9	8.5	3.5	177.83	-105.9	-131.8	589.4	584.0	5.38	109.543		
1,800.0	1,712.1	1,644.0	1,636.5	9.3	3.7	177.93	-111.9	-139.8	641.8	636.1	5.70	112.694		
1,900.0	1,802.8	1,729.2	1,721.0	10.1	3.9	178.02	-117.9	-147.9	694.2	688.2	6.01	115.518		
2,000.0	1,893.6	1,814.3	1,805.6	10.9	4.2	178.09	-123.8	-156.0	746.6	740.3	6.32	118.063		
2,100.0	1,984.3	1,899.5	1,890.2	11.7	4.4	178.16	-129.8	-164.1	799.0	792.4	6.64	120.368		
2,200.0	2,075.1	1,984.7	1,974.8	12.5	4.6	178.21	-135.8	-172.1	851.4	844.5	6.95	122.466		
2,300.0	2,165.8	2,069.8	2,059.3	13.3	4.8	178.26	-141.8	-180.2	903.8	896.6	7.27	124.384		
2,400.0	2,256.6	2,155.0	2,143.9	14.1	5.1	178.30	-147.7	-188.3	956.2	948.7	7.58	126.144		
2,500.0	2,347.3	2,240.2	2,228.5	14.9	5.3	178.34	-153.7	-196.3	1,008.6	1,000.7	7.89	127.764		
2,600.0	2,438.1	2,325.3	2,313.1	15.6	5.5	178.38	-159.7	-204.4	1,061.0	1,052.8	8.21	129.262		
2,700.0	2,528.8	2,410.5	2,397.6	16.4	5.8	178.41	-165.7	-212.5	1,113.4	1,104.9	8.52	130.649		
2,800.0	2,619.5	2,495.7	2,482.2	17.2	6.0	178.44	-171.7	-220.6	1,165.8	1,157.0	8.84	131.939		
2,900.0	2,710.3	2,580.9	2,566.8	18.0	6.2	178.47	-177.6	-228.6	1,218.3	1,209.1	9.15	133.140		
3,000.0	2,801.0	2,666.0	2,651.4	18.8	6.4	178.49	-183.6	-236.7	1,270.7	1,261.2	9.46	134.262		
3,100.0	2,891.8	2,751.2	2,736.0	19.6	6.7	178.52	-189.6	-244.8	1,323.0	1,313.2	9.79	135.098		

Cathedral Energy Services

Anticollision Report

Company:	Caerus Oil & Gas (NAD 27)	Local Co-ordinate Reference:	Well Nolte 13D-13
Project:	Garfield County, CO	TVD Reference:	WELL @ 5117.8ft (Original Well Elev)
Reference Site:	S14-T7S-R96W	MD Reference:	WELL @ 5117.8ft (Original Well Elev)
Site Error:	0.0ft	North Reference:	True
Reference Well:	Nolte 13D-13	Survey Calculation Method:	Minimum Curvature
Well Error:	0.0ft	Output errors are at	2.00 sigma
Reference Wellbore	DD	Database:	USA EDM 5000 Multi Users DB
Reference Design:	Plan #3	Offset TVD Reference:	Offset Datum

Offset Design S14-T7S-R96W - Nolte SWD 1-14 - DD - Plan #3													Offset Site Error:	0.0 ft
Survey Program: 0-MWD													Offset Well Error:	0.0 ft
Reference		Offset		Semi Major Axis			Distance				Total	Separation	Warning	
Measured Depth (ft)	Vertical Depth (ft)	Measured Depth (ft)	Vertical Depth (ft)	Reference (ft)	Offset (ft)	Highside Toolface (°)	Offset Wellbore Centre +N/-S (ft)	+E/-W (ft)	Between Centres (ft)	Between Ellipses (ft)	Uncertainty Axis	Factor		
0.0	0.0	0.0	0.0	0.0	0.0	-142.34	-45.0	-34.7	56.9					
100.0	100.0	100.0	100.0	0.1	0.1	-142.34	-45.0	-34.7	56.9	56.6	0.26	222.554		
200.0	200.0	200.0	200.0	0.3	0.3	-142.34	-45.0	-34.7	56.9	56.3	0.60	94.055		
300.0	300.0	300.0	300.0	0.5	0.5	-142.34	-45.0	-34.7	56.9	55.9	0.95	59.627 CC, ES		
400.0	400.0	400.0	400.0	0.7	0.7	160.84	-45.0	-34.7	59.3	58.0	1.30	45.556		
500.0	499.6	499.6	499.6	0.9	0.8	162.99	-45.0	-34.7	66.8	65.1	1.65	40.468		
600.0	598.8	598.8	598.8	1.1	1.0	165.65	-45.0	-34.7	79.4	77.4	2.00	39.765 SF		
700.0	697.1	697.1	697.1	1.5	1.2	168.20	-45.0	-34.7	97.1	94.8	2.34	41.594		
800.0	794.3	794.3	794.3	1.9	1.3	170.36	-45.0	-34.7	120.1	117.4	2.67	45.047		
900.0	890.2	890.2	890.2	2.5	1.5	172.08	-45.0	-34.7	148.2	145.2	2.99	49.622		
1,000.0	984.4	984.4	984.4	3.1	1.7	173.41	-45.0	-34.7	181.3	178.0	3.30	55.026		
1,100.0	1,076.8	1,076.8	1,076.8	3.8	1.8	174.44	-45.0	-34.7	219.4	215.8	3.59	61.079		
1,200.0	1,167.6	1,167.6	1,167.6	4.6	2.0	175.30	-45.0	-34.7	261.1	257.2	3.91	66.782		
1,300.0	1,258.4	1,258.4	1,258.4	5.4	2.2	175.95	-45.0	-34.7	303.0	298.8	4.24	71.497		
1,400.0	1,349.1	1,349.1	1,349.1	6.1	2.3	176.44	-45.0	-34.7	345.0	340.4	4.57	75.547		
1,500.0	1,439.9	1,439.9	1,439.9	6.9	2.5	176.83	-45.0	-34.7	386.9	382.0	4.89	79.061		
1,600.0	1,530.6	1,530.6	1,530.6	7.7	2.6	177.14	-45.0	-34.7	428.9	423.7	5.22	82.140		
1,700.0	1,621.4	1,621.4	1,621.4	8.5	2.8	177.39	-45.0	-34.7	470.9	465.3	5.55	84.859		
1,800.0	1,712.1	1,712.1	1,712.1	9.3	2.9	177.61	-45.0	-34.7	512.9	507.0	5.88	87.277		
1,900.0	1,802.8	1,802.8	1,802.8	10.1	3.1	177.79	-45.0	-34.7	554.9	548.6	6.20	89.442		
2,000.0	1,893.6	1,893.6	1,893.6	10.9	3.3	177.94	-45.0	-34.7	596.8	590.3	6.53	91.391		
2,100.0	1,984.3	1,984.3	1,984.3	11.7	3.4	178.08	-45.0	-34.7	638.8	632.0	6.86	93.156		
2,200.0	2,075.1	2,075.1	2,075.1	12.5	3.6	178.20	-45.0	-34.7	680.8	673.7	7.18	94.760		
2,300.0	2,165.8	2,165.8	2,165.8	13.3	3.7	178.30	-45.0	-34.7	722.8	715.3	7.51	96.225		
2,400.0	2,256.6	2,256.6	2,256.6	14.1	3.9	178.39	-45.0	-34.7	764.9	757.0	7.84	97.569		
2,500.0	2,347.3	2,347.3	2,347.3	14.9	4.1	178.48	-45.0	-34.7	806.9	798.7	8.17	98.805		
2,600.0	2,438.1	2,438.1	2,438.1	15.6	4.2	178.55	-45.0	-34.7	848.9	840.4	8.49	99.946		
2,700.0	2,528.8	2,528.8	2,528.8	16.4	4.4	178.62	-45.0	-34.7	890.9	882.1	8.82	101.003		
2,800.0	2,619.5	2,619.5	2,619.5	17.2	4.5	178.68	-45.0	-34.7	932.9	923.7	9.15	101.984		
2,900.0	2,710.3	2,710.3	2,710.3	18.0	4.7	178.74	-45.0	-34.7	974.9	965.4	9.47	102.898		
3,000.0	2,801.0	2,801.0	2,801.0	18.8	4.8	178.79	-45.0	-34.7	1,016.9	1,007.1	9.80	103.751		
3,100.0	2,891.8	2,891.8	2,891.8	19.6	5.0	178.84	-45.0	-34.7	1,058.9	1,048.7	10.14	104.401		
3,200.0	2,983.9	2,983.9	2,983.9	20.3	5.2	178.91	-45.0	-34.7	1,097.7	1,087.2	10.55	104.045		
3,300.0	3,078.0	3,078.0	3,078.0	20.9	5.3	178.96	-45.0	-34.7	1,131.7	1,120.8	10.95	103.385		
3,400.0	3,173.6	3,173.6	3,173.6	21.4	5.5	179.00	-45.0	-34.7	1,160.7	1,149.4	11.33	102.455		
3,500.0	3,270.7	3,270.7	3,270.7	21.8	5.7	179.04	-45.0	-34.7	1,184.7	1,173.0	11.70	101.286		
3,600.0	3,368.9	3,368.9	3,368.9	22.1	5.8	179.06	-45.0	-34.7	1,203.6	1,191.5	12.05	99.901		
3,700.0	3,468.0	3,468.0	3,468.0	22.4	6.0	179.08	-45.0	-34.7	1,217.3	1,204.9	12.38	98.320		
3,800.0	3,567.6	3,567.6	3,567.6	22.5	6.2	179.09	-45.0	-34.7	1,225.7	1,213.1	12.69	96.560		
3,900.0	3,667.5	3,667.5	3,667.5	22.6	6.4	179.09	-45.0	-34.7	1,229.0	1,216.0	12.99	94.633		
4,000.0	3,767.5	3,767.5	3,767.5	22.6	6.5	-123.25	-45.0	-34.7	1,229.1	1,215.7	13.33	92.196		
4,100.0	3,867.5	3,867.5	3,867.5	22.7	6.7	-123.25	-45.0	-34.7	1,229.1	1,215.4	13.68	89.822		
4,200.0	3,967.5	3,967.5	3,967.5	22.7	6.9	-123.25	-45.0	-34.7	1,229.1	1,215.0	14.04	87.568		
4,300.0	4,067.5	4,067.5	4,067.5	22.8	7.1	-123.25	-45.0	-34.7	1,229.1	1,214.7	14.39	85.425		
4,400.0	4,167.5	4,167.5	4,167.5	22.9	7.2	-123.25	-45.0	-34.7	1,229.1	1,214.3	14.74	83.385		
4,500.0	4,267.5	4,267.5	4,267.5	22.9	7.4	-123.25	-45.0	-34.7	1,229.1	1,214.0	15.09	81.441		
4,600.0	4,367.5	4,367.5	4,367.5	23.0	7.6	-123.25	-45.0	-34.7	1,229.1	1,213.6	15.44	79.587		
4,700.0	4,467.5	4,467.5	4,467.5	23.0	7.8	-123.25	-45.0	-34.7	1,229.1	1,213.3	15.79	77.815		
4,800.0	4,567.5	4,567.5	4,567.5	23.1	7.9	-123.25	-45.0	-34.7	1,229.1	1,212.9	16.15	76.122		
4,900.0	4,667.5	4,667.5	4,667.5	23.2	8.1	-123.25	-45.0	-34.7	1,229.1	1,212.6	16.50	74.500		
5,000.0	4,767.5	4,767.5	4,767.5	23.2	8.3	-123.25	-45.0	-34.7	1,229.1	1,212.2	16.85	72.947		
5,100.0	4,867.5	4,867.5	4,867.5	23.3	8.4	-123.25	-45.0	-34.7	1,229.1	1,211.9	17.20	71.458		

CC - Min centre to center distance or convergent point, SF - min separation factor, ES - min ellipse separation

Cathedral Energy Services

Anticollision Report

Company:	Caerus Oil & Gas (NAD 27)	Local Co-ordinate Reference:	Well Nolte 13D-13
Project:	Garfield County, CO	TVD Reference:	WELL @ 5117.8ft (Original Well Elev)
Reference Site:	S14-T7S-R96W	MD Reference:	WELL @ 5117.8ft (Original Well Elev)
Site Error:	0.0ft	North Reference:	True
Reference Well:	Nolte 13D-13	Survey Calculation Method:	Minimum Curvature
Well Error:	0.0ft	Output errors are at	2.00 sigma
Reference Wellbore	DD	Database:	USA EDM 5000 Multi Users DB
Reference Design:	Plan #3	Offset TVD Reference:	Offset Datum

Offset Design													S14-T7S-R96W - Nolte SWD 1-14 - DD - Plan #3		Offset Site Error:		0.0 ft
Survey Program: 0-MWD															Offset Well Error:		0.0 ft
Reference		Offset		Semi Major Axis			Distance										
Measured Depth (ft)	Vertical Depth (ft)	Measured Depth (ft)	Vertical Depth (ft)	Reference (ft)	Offset (ft)	Highside Toolface (°)	Offset Wellbore Centre +N/-S (ft)	+E/-W (ft)	Between Centres (ft)	Between Ellipses (ft)	Total Uncertainty Axis	Separation Factor	Warning				
5,200.0	4,967.5	4,967.5	4,967.5	23.4	8.6	-123.25	-45.0	-34.7	1,229.1	1,211.5	17.55	70.029					
5,300.0	5,067.5	5,067.5	5,067.5	23.4	8.8	-123.25	-45.0	-34.7	1,229.1	1,211.2	17.90	68.655					
5,400.0	5,167.5	5,167.5	5,167.5	23.5	9.0	-123.25	-45.0	-34.7	1,229.1	1,210.8	18.25	67.335					
5,500.0	5,267.5	5,267.5	5,267.5	23.6	9.1	-123.25	-45.0	-34.7	1,229.1	1,210.5	18.60	66.066					
5,600.0	5,367.5	5,367.5	5,367.5	23.6	9.3	-123.25	-45.0	-34.7	1,229.1	1,210.1	18.95	64.843					
5,700.0	5,467.5	5,467.5	5,467.5	23.7	9.5	-123.25	-45.0	-34.7	1,229.1	1,209.8	19.31	63.665					
5,800.0	5,567.5	5,567.5	5,567.5	23.8	9.7	-123.25	-45.0	-34.7	1,229.1	1,209.4	19.66	62.529					
5,900.0	5,667.5	5,667.5	5,667.5	23.9	9.8	-123.25	-45.0	-34.7	1,229.1	1,209.1	20.01	61.433					
6,000.0	5,767.5	5,767.5	5,767.5	23.9	10.0	-123.25	-45.0	-34.7	1,229.1	1,208.7	20.36	60.375					
6,100.0	5,867.5	5,867.5	5,867.5	24.0	10.2	-123.25	-45.0	-34.7	1,229.1	1,208.4	20.71	59.353					
6,122.5	5,890.0	5,890.0	5,890.0	24.0	10.2	-123.25	-45.0	-34.7	1,229.1	1,208.3	20.79	59.128					

Cathedral Energy Services

Anticollision Report

Company:	Caerus Oil & Gas (NAD 27)	Local Co-ordinate Reference:	Well Nolte 13D-13
Project:	Garfield County, CO	TVD Reference:	WELL @ 5117.8ft (Original Well Elev)
Reference Site:	S14-T7S-R96W	MD Reference:	WELL @ 5117.8ft (Original Well Elev)
Site Error:	0.0ft	North Reference:	True
Reference Well:	Nolte 13D-13	Survey Calculation Method:	Minimum Curvature
Well Error:	0.0ft	Output errors are at	2.00 sigma
Reference Wellbore	DD	Database:	USA EDM 5000 Multi Users DB
Reference Design:	Plan #3	Offset TVD Reference:	Offset Datum

Reference Depths are relative to WELL @ 5117.8ft (Original Well Elev)
 Offset Depths are relative to Offset Datum
 Central Meridian is -105.500000 °

Coordinates are relative to: Nolte 13D-13
 Coordinate System is US State Plane 1927 (Exact solution), Colorado Central 502
 Grid Convergence at Surface is: -1.62°

