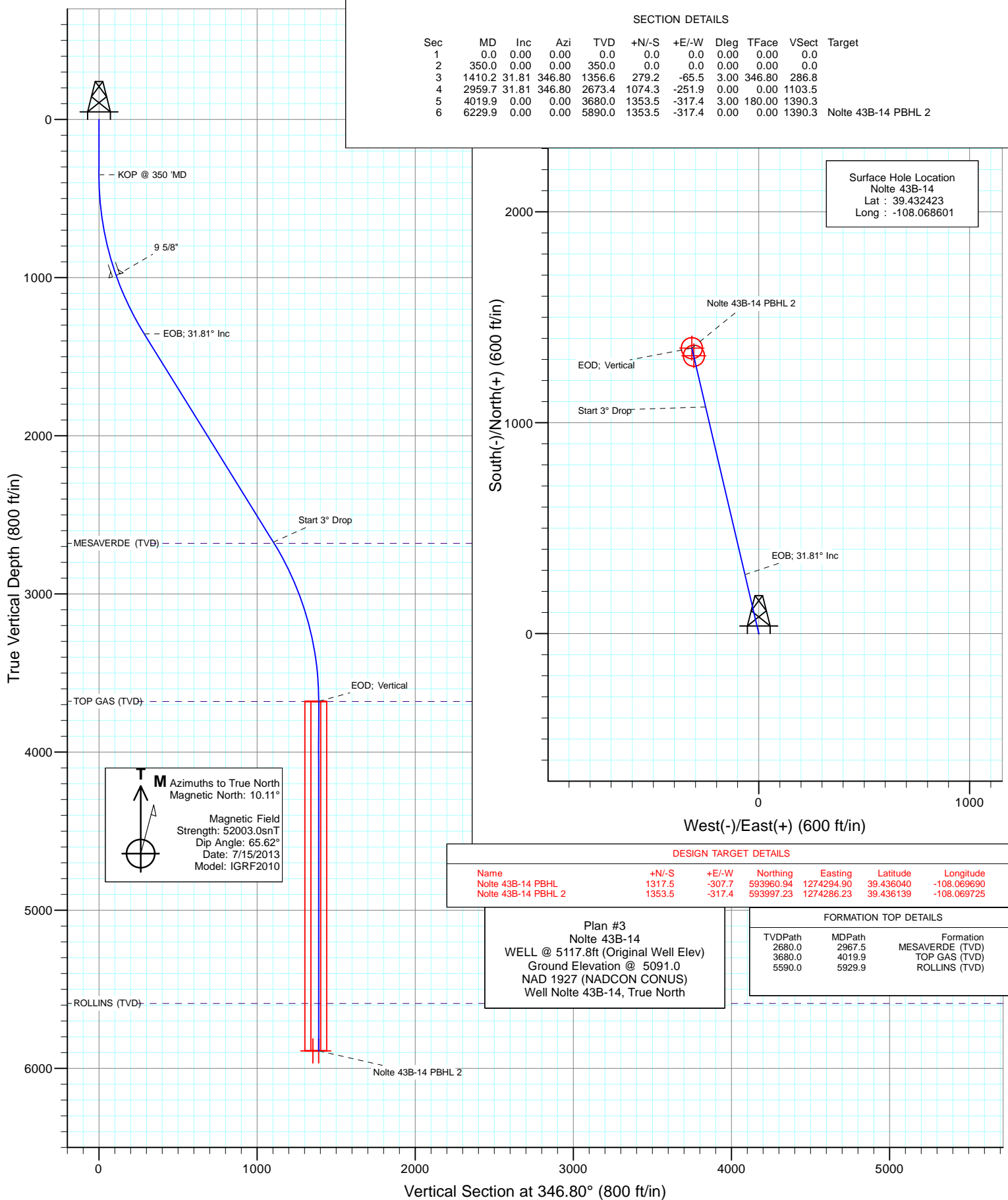




Project: Garfield County, CO
 Site: S14-T7S-R96W
 Well: Nolte 43B-14
 Wellbore: DD
 Design: Plan #3



Cathedral Energy Services

Planning Report

Database:	USA EDM 5000 Multi Users DB	Local Co-ordinate Reference:	Well Nolte 43B-14
Company:	Caerus Oil & Gas (NAD 27)	TVD Reference:	WELL @ 5117.8ft (Original Well Elev)
Project:	Garfield County, CO	MD Reference:	WELL @ 5117.8ft (Original Well Elev)
Site:	S14-T7S-R96W	North Reference:	True
Well:	Nolte 43B-14	Survey Calculation Method:	Minimum Curvature
Wellbore:	DD		
Design:	Plan #3		

Project	Garfield County, CO		
Map System:	US State Plane 1927 (Exact solution)	System Datum:	Mean Sea Level
Geo Datum:	NAD 1927 (NADCON CONUS)		
Map Zone:	Colorado Central 502		

Site		S14-T7S-R96W			
Site Position:		Northing:	592,603.28 ft	Latitude:	39.432320
From:	Lat/Long	Easting:	1,274,372.48 ft	Longitude:	-108.069280
Position Uncertainty:	0.0 ft	Slot Radius:	13.200 in	Grid Convergence:	-1.62 °

Well	Nolte 43B-14					
Well Position	+N/-S	0.0 ft	Northing:	592,635.25 ft	Latitude:	39.432423
	+E/-W	0.0 ft	Easting:	1,274,565.26 ft	Longitude:	-108.068601
Position Uncertainty		0.0 ft	Wellhead Elevation:	ft	Ground Level:	5,091.0 ft

Wellbore	DD				
Magnetics	Model Name	Sample Date	Declination (°)	Dip Angle (°)	Field Strength (nT)
	IGRF2010	7/15/2013	10.11	65.62	52,003

Design	Plan #3				
Audit Notes:					
Version:	Phase:	PLAN	Tie On Depth:	0.0	
Vertical Section:	Depth From (TVD) (ft)	+N/-S (ft)	+E/-W (ft)	Direction (°)	
	0.0	0.0	0.0	346.80	

Plan Sections										
Measured Depth (ft)	Inclination (°)	Azimuth (°)	Vertical Depth (ft)	+N/-S (ft)	+E/-W (ft)	Dogleg Rate (°/100ft)	Build Rate (°/100ft)	Turn Rate (°/100ft)	TFO (°)	Target
0.0	0.00	0.00	0.0	0.0	0.0	0.00	0.00	0.00	0.00	
350.0	0.00	0.00	350.0	0.0	0.0	0.00	0.00	0.00	0.00	
1,410.2	31.81	346.80	1,356.6	279.2	-65.5	3.00	3.00	0.00	346.80	
2,959.7	31.81	346.80	2,673.4	1,074.3	-251.9	0.00	0.00	0.00	0.00	
4,019.9	0.00	0.00	3,680.0	1,353.5	-317.4	3.00	-3.00	0.00	180.00	
6,229.9	0.00	0.00	5,890.0	1,353.5	-317.4	0.00	0.00	0.00	0.00	Nolte 43B-14 PBHL 2

Cathedral Energy Services

Planning Report

Database:	USA EDM 5000 Multi Users DB	Local Co-ordinate Reference:	Well Nolte 43B-14
Company:	Caerus Oil & Gas (NAD 27)	TVD Reference:	WELL @ 5117.8ft (Original Well Elev)
Project:	Garfield County, CO	MD Reference:	WELL @ 5117.8ft (Original Well Elev)
Site:	S14-T7S-R96W	North Reference:	True
Well:	Nolte 43B-14	Survey Calculation Method:	Minimum Curvature
Wellbore:	DD		
Design:	Plan #3		

Planned Survey

Measured Depth (ft)	Inclination (°)	Azimuth (°)	Vertical Depth (ft)	+N/-S (ft)	+E/-W (ft)	Vertical Section (ft)	Dogleg Rate (°/100ft)	Build Rate (°/100ft)	Comments / Formations
0.0	0.00	0.00	0.0	0.0	0.0	0.0	0.00	0.00	
100.0	0.00	0.00	100.0	0.0	0.0	0.0	0.00	0.00	
200.0	0.00	0.00	200.0	0.0	0.0	0.0	0.00	0.00	
300.0	0.00	0.00	300.0	0.0	0.0	0.0	0.00	0.00	
350.0	0.00	0.00	350.0	0.0	0.0	0.0	0.00	0.00	KOP @ 350 'MD
400.0	1.50	346.80	400.0	0.6	-0.1	0.7	3.00	3.00	
500.0	4.50	346.80	499.8	5.7	-1.3	5.9	3.00	3.00	
600.0	7.50	346.80	599.3	15.9	-3.7	16.3	3.00	3.00	
700.0	10.50	346.80	698.0	31.1	-7.3	32.0	3.00	3.00	
800.0	13.50	346.80	795.8	51.4	-12.0	52.8	3.00	3.00	
900.0	16.50	346.80	892.4	76.6	-18.0	78.6	3.00	3.00	
1,000.0	19.50	346.80	987.5	106.7	-25.0	109.5	3.00	3.00	9 5/8"
1,100.0	22.50	346.80	1,080.9	141.5	-33.2	145.4	3.00	3.00	
1,200.0	25.50	346.80	1,172.2	181.1	-42.5	186.0	3.00	3.00	
1,300.0	28.50	346.80	1,261.3	225.3	-52.8	231.4	3.00	3.00	
1,400.0	31.50	346.80	1,347.9	274.0	-64.3	281.4	3.00	3.00	
1,410.2	31.81	346.80	1,356.6	279.2	-65.5	286.8	3.00	3.00	EOB; 31.81° Inc
1,500.0	31.81	346.80	1,432.9	325.3	-76.3	334.1	0.00	0.00	
1,600.0	31.81	346.80	1,517.9	376.6	-88.3	386.8	0.00	0.00	
1,700.0	31.81	346.80	1,602.9	427.9	-100.4	439.5	0.00	0.00	
1,800.0	31.81	346.80	1,687.8	479.2	-112.4	492.2	0.00	0.00	
1,900.0	31.81	346.80	1,772.8	530.5	-124.4	544.9	0.00	0.00	
2,000.0	31.81	346.80	1,857.8	581.9	-136.5	597.6	0.00	0.00	
2,100.0	31.81	346.80	1,942.8	633.2	-148.5	650.4	0.00	0.00	
2,200.0	31.81	346.80	2,027.8	684.5	-160.5	703.1	0.00	0.00	
2,300.0	31.81	346.80	2,112.8	735.8	-172.6	755.8	0.00	0.00	
2,400.0	31.81	346.80	2,197.7	787.1	-184.6	808.5	0.00	0.00	
2,500.0	31.81	346.80	2,282.7	838.4	-196.6	861.2	0.00	0.00	
2,600.0	31.81	346.80	2,367.7	889.7	-208.7	913.9	0.00	0.00	
2,700.0	31.81	346.80	2,452.7	941.1	-220.7	966.6	0.00	0.00	
2,800.0	31.81	346.80	2,537.7	992.4	-232.7	1,019.3	0.00	0.00	
2,900.0	31.81	346.80	2,622.7	1,043.7	-244.8	1,072.0	0.00	0.00	
2,959.7	31.81	346.80	2,673.4	1,074.3	-251.9	1,103.5	0.00	0.00	Start 3° Drop
2,967.5	31.57	346.80	2,680.0	1,078.3	-252.9	1,107.5	3.00	-3.00	MESAVERDE (TVD)
3,000.0	30.60	346.80	2,707.9	1,094.6	-256.7	1,124.3	3.00	-3.00	
3,100.0	27.60	346.80	2,795.2	1,142.0	-267.8	1,173.0	3.00	-3.00	
3,200.0	24.60	346.80	2,885.0	1,184.8	-277.8	1,217.0	3.00	-3.00	
3,300.0	21.60	346.80	2,977.0	1,223.0	-286.8	1,256.2	3.00	-3.00	
3,400.0	18.60	346.80	3,070.9	1,256.5	-294.6	1,290.5	3.00	-3.00	
3,500.0	15.60	346.80	3,166.5	1,285.1	-301.4	1,319.9	3.00	-3.00	
3,600.0	12.60	346.80	3,263.4	1,308.8	-306.9	1,344.3	3.00	-3.00	
3,700.0	9.60	346.80	3,361.6	1,327.5	-311.3	1,363.5	3.00	-3.00	
3,800.0	6.60	346.80	3,460.6	1,341.2	-314.5	1,377.6	3.00	-3.00	
3,900.0	3.60	346.80	3,560.1	1,349.9	-316.6	1,386.5	3.00	-3.00	
4,000.0	0.60	346.80	3,660.1	1,353.4	-317.4	1,390.2	3.00	-3.00	
4,019.9	0.00	0.00	3,680.0	1,353.5	-317.4	1,390.3	3.00	-3.00	EOD; Vertical - TOP GAS (TVD)
4,100.0	0.00	0.00	3,760.1	1,353.5	-317.4	1,390.3	0.00	0.00	
4,200.0	0.00	0.00	3,860.1	1,353.5	-317.4	1,390.3	0.00	0.00	
4,300.0	0.00	0.00	3,960.1	1,353.5	-317.4	1,390.3	0.00	0.00	
4,400.0	0.00	0.00	4,060.1	1,353.5	-317.4	1,390.3	0.00	0.00	
4,500.0	0.00	0.00	4,160.1	1,353.5	-317.4	1,390.3	0.00	0.00	
4,600.0	0.00	0.00	4,260.1	1,353.5	-317.4	1,390.3	0.00	0.00	

Cathedral Energy Services

Planning Report

Database:	USA EDM 5000 Multi Users DB	Local Co-ordinate Reference:	Well Nolte 43B-14
Company:	Caerus Oil & Gas (NAD 27)	TVD Reference:	WELL @ 5117.8ft (Original Well Elev)
Project:	Garfield County, CO	MD Reference:	WELL @ 5117.8ft (Original Well Elev)
Site:	S14-T7S-R96W	North Reference:	True
Well:	Nolte 43B-14	Survey Calculation Method:	Minimum Curvature
Wellbore:	DD		
Design:	Plan #3		

Planned Survey

Measured Depth (ft)	Inclination (°)	Azimuth (°)	Vertical Depth (ft)	+N/-S (ft)	+E/-W (ft)	Vertical Section (ft)	Dogleg Rate (°/100ft)	Build Rate (°/100ft)	Comments / Formations
4,700.0	0.00	0.00	4,360.1	1,353.5	-317.4	1,390.3	0.00	0.00	
4,800.0	0.00	0.00	4,460.1	1,353.5	-317.4	1,390.3	0.00	0.00	
4,900.0	0.00	0.00	4,560.1	1,353.5	-317.4	1,390.3	0.00	0.00	
5,000.0	0.00	0.00	4,660.1	1,353.5	-317.4	1,390.3	0.00	0.00	
5,100.0	0.00	0.00	4,760.1	1,353.5	-317.4	1,390.3	0.00	0.00	
5,200.0	0.00	0.00	4,860.1	1,353.5	-317.4	1,390.3	0.00	0.00	
5,300.0	0.00	0.00	4,960.1	1,353.5	-317.4	1,390.3	0.00	0.00	
5,400.0	0.00	0.00	5,060.1	1,353.5	-317.4	1,390.3	0.00	0.00	
5,500.0	0.00	0.00	5,160.1	1,353.5	-317.4	1,390.3	0.00	0.00	
5,600.0	0.00	0.00	5,260.1	1,353.5	-317.4	1,390.3	0.00	0.00	
5,700.0	0.00	0.00	5,360.1	1,353.5	-317.4	1,390.3	0.00	0.00	
5,800.0	0.00	0.00	5,460.1	1,353.5	-317.4	1,390.3	0.00	0.00	
5,900.0	0.00	0.00	5,560.1	1,353.5	-317.4	1,390.3	0.00	0.00	
5,929.9	0.00	0.00	5,590.0	1,353.5	-317.4	1,390.3	0.00	0.00	ROLLINS (TVD)
6,000.0	0.00	0.00	5,660.1	1,353.5	-317.4	1,390.3	0.00	0.00	
6,100.0	0.00	0.00	5,760.1	1,353.5	-317.4	1,390.3	0.00	0.00	
6,200.0	0.00	0.00	5,860.1	1,353.5	-317.4	1,390.3	0.00	0.00	
6,229.9	0.00	0.00	5,890.0	1,353.5	-317.4	1,390.3	0.00	0.00	PBHL @ 6,229' MD

Targets

Target Name	Dip Angle (°)	Dip Dir. (°)	TVD (ft)	+N/-S (ft)	+E/-W (ft)	Northing (ft)	Easting (ft)	Latitude	Longitude
Nolte 43B-14 PBHL	0.00	0.00	5,890.0	1,317.5	-307.7	593,960.94	1,274,294.90	39.436040	-108.069690
- hit/miss target									
- Shape									
- plan misses target center by 37.3ft at 6229.9ft MD (5890.0 TVD, 1353.5 N, -317.4 E)									
- Circle (radius 50.0)									
Nolte 43B-14 PBHL 2	0.00	0.00	5,890.0	1,353.5	-317.4	593,997.23	1,274,286.23	39.436139	-108.069725
- plan hits target center									
- Circle (radius 50.0)									

Casing Points

Measured Depth (ft)	Vertical Depth (ft)	Name	Casing Diameter (in)	Hole Diameter (in)
1,000.0	987.5	9 5/8"	9.625	12.250

Formations

Measured Depth (ft)	Vertical Depth (ft)	Name	Lithology	Dip (°)	Dip Direction (°)
2,967.5	2,680.0	MESAVERDE (TVD)		0.00	
4,019.9	3,680.0	TOP GAS (TVD)		0.00	
5,929.9	5,590.0	ROLLINS (TVD)		0.00	

Cathedral Energy Services

Planning Report

Database:	USA EDM 5000 Multi Users DB	Local Co-ordinate Reference:	Well Nolte 43B-14
Company:	Caerus Oil & Gas (NAD 27)	TVD Reference:	WELL @ 5117.8ft (Original Well Elev)
Project:	Garfield County, CO	MD Reference:	WELL @ 5117.8ft (Original Well Elev)
Site:	S14-T7S-R96W	North Reference:	True
Well:	Nolte 43B-14	Survey Calculation Method:	Minimum Curvature
Wellbore:	DD		
Design:	Plan #3		

Plan Annotations

Measured Depth (ft)	Vertical Depth (ft)	Local Coordinates		Comment
		+N/-S (ft)	+E/-W (ft)	
350.0	350.0	0.0	0.0	KOP @ 350 'MD
1,410.2	1,356.6	279.2	-65.5	EOB; 31.81° Inc
2,959.7	2,673.4	1,074.3	-251.9	Start 3° Drop
4,019.9	3,680.0	1,353.5	-317.4	EOD; Vertical
6,229.9	5,890.0	1,353.5	-317.4	PBHL @ 6,229' MD

Caerus Oil & Gas (NAD 27)

Garfield County, CO

S14-T7S-R96W

Nolte 43B-14

DD

Plan #3

Anticollision Report

09 September, 2013

Cathedral Energy Services

Anticollision Report

Company:	Caerus Oil & Gas (NAD 27)	Local Co-ordinate Reference:	Well Nolte 43B-14
Project:	Garfield County, CO	TVD Reference:	WELL @ 5117.8ft (Original Well Elev)
Reference Site:	S14-T7S-R96W	MD Reference:	WELL @ 5117.8ft (Original Well Elev)
Site Error:	0.0ft	North Reference:	True
Reference Well:	Nolte 43B-14	Survey Calculation Method:	Minimum Curvature
Well Error:	0.0ft	Output errors are at	2.00 sigma
Reference Wellbore	DD	Database:	USA EDM 5000 Multi Users DB
Reference Design:	Plan #3	Offset TVD Reference:	Offset Datum

Reference	Plan #3		
Filter type:	NO GLOBAL FILTER: Using user defined selection & filtering criteria		
Interpolation Method:	MD Interval 100.0ft	Error Model:	ISCWSA
Depth Range:	Unlimited	Scan Method:	Closest Approach 3D
Results Limited by:	Maximum center-center distance of 1,356.1ft	Error Surface:	Elliptical Conic
Warning Levels Evaluated at:	2.00 Sigma		

Survey Tool Program	Date	8/29/2013		
From (ft)	To (ft)	Survey (Wellbore)	Tool Name	Description
0.0	6,229.9	Plan #3 (DD)	MWD	Geolink MWD

Cathedral Energy Services

Anticollision Report

Company:	Caerus Oil & Gas (NAD 27)	Local Co-ordinate Reference:	Well Nolte 43B-14
Project:	Garfield County, CO	TVD Reference:	WELL @ 5117.8ft (Original Well Elev)
Reference Site:	S14-T7S-R96W	MD Reference:	WELL @ 5117.8ft (Original Well Elev)
Site Error:	0.0ft	North Reference:	True
Reference Well:	Nolte 43B-14	Survey Calculation Method:	Minimum Curvature
Well Error:	0.0ft	Output errors are at	2.00 sigma
Reference Wellbore	DD	Database:	USA EDM 5000 Multi Users DB
Reference Design:	Plan #3	Offset TVD Reference:	Offset Datum

Summary						
Site Name	Reference Measured Depth (ft)	Offset Measured Depth (ft)	Distance Between Centres (ft)	Distance Between Ellipses (ft)	Separation Factor	Warning
S14-T7S-R96W						
Nolte 11A-24 - DD - Plan #3	300.0	300.0	26.0	25.1	27.274	CC, ES
Nolte 11A-24 - DD - Plan #3	400.0	399.0	28.3	27.0	21.727	SF
Nolte 11B-24 - DD - Plan #3	200.0	200.0	33.5	32.9	55.456	CC, ES
Nolte 11B-24 - DD - Plan #3	400.0	397.0	41.6	40.3	31.595	SF
Nolte 11C-24 - DD - Plan #3	244.3	234.6	41.2	40.5	54.278	CC, ES
Nolte 11C-24 - DD - Plan #3	400.0	388.0	45.4	44.1	34.780	SF
Nolte 13A-13 - DD - Plan #3	200.0	200.0	24.0	23.4	39.705	CC, ES
Nolte 13A-13 - DD - Plan #3	1,500.0	1,400.0	299.6	287.4	24.559	SF
Nolte 13B-13 - DD - Plan #3	233.4	233.4	16.0	15.3	22.198	CC, ES
Nolte 13B-13 - DD - Plan #3	400.0	398.5	21.3	20.0	16.378	SF
Nolte 13C-13 - DD - Plan #3	200.0	199.8	26.0	25.4	43.081	CC, ES
Nolte 13C-13 - DD - Plan #3	400.0	396.5	36.0	34.7	27.735	SF
Nolte 13D-13 - DD - Plan #3	300.0	300.0	18.9	17.9	19.805	CC, ES
Nolte 13D-13 - DD - Plan #3	400.0	398.9	21.3	20.0	16.358	SF
Nolte 14A-13 - DD - Plan #3	300.0	300.0	12.8	11.9	13.444	CC
Nolte 14A-13 - DD - Plan #3	400.0	400.0	12.8	11.5	9.868	ES, SF
Nolte 14B-13 - DD - Plan #3	300.0	300.0	10.0	9.0	10.496	CC
Nolte 14B-13 - DD - Plan #3	329.4	329.4	10.1	9.0	9.544	ES
Nolte 14B-13 - DD - Plan #3	400.0	400.0	10.4	9.1	8.018	SF
Nolte 14C-13 - DD - Plan #3	300.0	300.0	12.4	11.4	12.960	CC, ES
Nolte 14C-13 - DD - Plan #3	400.0	400.0	13.0	11.7	9.980	SF
Nolte 14D-13 - DD - Plan #3	300.0	300.0	18.9	17.9	19.794	CC, ES
Nolte 14D-13 - DD - Plan #3	400.0	400.0	19.5	18.2	14.989	SF
Nolte 43A-14 - DD - Plan #3	300.0	300.0	8.0	7.0	8.385	CC, ES
Nolte 43A-14 - DD - Plan #3	1,500.0	1,486.8	40.2	32.4	5.191	SF
Nolte 43C-14 - DD - Plan #3	300.0	300.0	8.0	7.0	8.373	CC
Nolte 43C-14 - DD - Plan #3	329.1	329.1	8.1	7.0	7.648	ES
Nolte 43C-14 - DD - Plan #3	400.0	400.0	8.5	7.2	6.520	SF
Nolte 44A-14 - DD - Plan #3	300.0	300.0	16.0	15.0	16.756	CC
Nolte 44A-14 - DD - Plan #3	328.5	328.5	16.1	15.0	15.251	ES
Nolte 44A-14 - DD - Plan #3	500.0	500.1	20.5	18.9	12.397	SF
Nolte 44B-14 - DD - Plan #3	300.0	300.0	24.0	23.0	25.141	CC
Nolte 44B-14 - DD - Plan #3	328.3	328.3	24.1	23.0	22.860	ES
Nolte 44B-14 - DD - Plan #3	500.0	499.8	28.7	27.1	17.353	SF
Nolte 44C-14 - DD - Plan #3	300.0	300.0	32.0	31.0	33.518	CC
Nolte 44C-14 - DD - Plan #3	328.1	328.1	32.1	31.0	30.463	ES
Nolte 44C-14 - DD - Plan #3	500.0	498.8	38.1	36.4	22.963	SF
Nolte SWD 1-14 - DD - Plan #3	300.0	300.0	40.0	39.0	41.888	CC
Nolte SWD 1-14 - DD - Plan #3	328.1	328.1	40.1	39.0	38.061	ES
Nolte SWD 1-14 - DD - Plan #3	600.0	599.3	53.4	51.4	26.569	SF

Cathedral Energy Services

Anticollision Report

Company:	Caerus Oil & Gas (NAD 27)	Local Co-ordinate Reference:	Well Nolte 43B-14
Project:	Garfield County, CO	TVD Reference:	WELL @ 5117.8ft (Original Well Elev)
Reference Site:	S14-T7S-R96W	MD Reference:	WELL @ 5117.8ft (Original Well Elev)
Site Error:	0.0ft	North Reference:	True
Reference Well:	Nolte 43B-14	Survey Calculation Method:	Minimum Curvature
Well Error:	0.0ft	Output errors are at	2.00 sigma
Reference Wellbore	DD	Database:	USA EDM 5000 Multi Users DB
Reference Design:	Plan #3	Offset TVD Reference:	Offset Datum

Offset Design S14-T7S-R96W - Nolte 11A-24 - DD - Plan #3													Offset Site Error:	0.0 ft
Survey Program: 0-MWD													Offset Well Error:	0.0 ft
Reference		Offset		Semi Major Axis			Distance					Separation Factor	Warning	
Measured Depth (ft)	Vertical Depth (ft)	Measured Depth (ft)	Vertical Depth (ft)	Reference (ft)	Offset (ft)	Highside Toolface (°)	Offset Wellbore Centre +N/-S (ft)	+E/-W (ft)	Between Centres (ft)	Between Ellipses (ft)	Total Uncertainty Axis			
0.0	0.0	0.0	0.0	0.0	0.0	-175.14	-25.9	-2.2	26.0					
100.0	100.0	100.0	100.0	0.1	0.1	-175.14	-25.9	-2.2	26.0	25.7	0.26	101.853		
200.0	200.0	200.0	200.0	0.3	0.3	-175.14	-25.9	-2.2	26.0	25.4	0.60	43.026		
300.0	300.0	300.0	300.0	0.5	0.5	-175.14	-25.9	-2.2	26.0	25.1	0.95	27.274 CC, ES		
400.0	400.0	399.0	399.0	0.7	0.7	-166.40	-27.7	-0.3	28.3	27.0	1.30	21.727 SF		
500.0	499.8	497.0	496.6	0.8	0.9	-176.33	-32.9	5.2	39.3	37.6	1.66	23.691		
600.0	599.3	592.4	591.2	1.1	1.1	175.85	-41.3	14.0	60.4	58.4	2.01	30.063		
700.0	698.0	684.0	681.4	1.4	1.4	171.17	-52.4	25.7	91.3	89.0	2.35	38.788		
800.0	795.8	770.9	766.1	1.7	1.8	168.39	-65.6	39.7	131.4	128.7	2.70	48.726		
900.0	892.4	852.2	844.5	2.2	2.2	166.59	-80.4	55.3	179.8	176.7	3.03	59.266		
1,000.0	987.5	927.2	916.0	2.8	2.6	165.29	-96.1	71.9	235.8	232.5	3.37	70.057		
1,100.0	1,080.9	1,000.0	984.4	3.4	3.1	164.21	-113.1	89.9	298.9	295.1	3.70	80.670		
1,200.0	1,172.2	1,057.8	1,038.1	4.2	3.5	163.25	-128.0	105.5	368.0	364.0	4.03	91.220		
1,300.0	1,261.3	1,113.3	1,088.9	5.0	3.9	162.27	-143.2	121.6	442.7	438.3	4.38	101.159		
1,400.0	1,347.9	1,162.3	1,133.3	5.9	4.3	161.19	-157.5	136.7	522.2	517.4	4.74	110.138		
1,500.0	1,432.9	1,200.0	1,167.1	6.8	4.6	161.20	-169.1	148.9	604.8	599.7	5.13	117.966		
1,600.0	1,517.9	1,247.8	1,209.4	7.7	5.1	161.31	-184.3	165.1	688.5	683.0	5.54	124.185		
1,700.0	1,602.9	1,300.0	1,254.9	8.7	5.5	161.34	-201.9	183.6	773.5	767.5	5.97	129.524		
1,800.0	1,687.8	1,323.4	1,275.1	9.6	5.8	161.33	-210.0	192.2	859.1	852.8	6.35	135.191		
1,900.0	1,772.8	1,357.9	1,304.6	10.5	6.1	161.30	-222.3	205.1	945.8	939.1	6.76	139.856		
2,000.0	1,857.8	1,400.0	1,340.2	11.5	6.5	161.23	-237.8	221.5	1,033.4	1,026.2	7.19	143.757		
2,100.0	1,942.8	1,424.3	1,360.5	12.4	6.8	161.18	-247.0	231.2	1,121.6	1,114.0	7.58	147.914		
2,200.0	2,027.8	1,470.9	1,399.4	13.3	7.3	161.09	-264.6	249.9	1,210.0	1,202.0	8.03	150.748		
2,300.0	2,112.8	1,517.5	1,438.3	14.3	7.7	161.01	-282.3	268.5	1,298.5	1,290.0	8.47	153.275		

Cathedral Energy Services

Anticollision Report

Company:	Caerus Oil & Gas (NAD 27)	Local Co-ordinate Reference:	Well Nolte 43B-14
Project:	Garfield County, CO	TVD Reference:	WELL @ 5117.8ft (Original Well Elev)
Reference Site:	S14-T7S-R96W	MD Reference:	WELL @ 5117.8ft (Original Well Elev)
Site Error:	0.0ft	North Reference:	True
Reference Well:	Nolte 43B-14	Survey Calculation Method:	Minimum Curvature
Well Error:	0.0ft	Output errors are at	2.00 sigma
Reference Wellbore	DD	Database:	USA EDM 5000 Multi Users DB
Reference Design:	Plan #3	Offset TVD Reference:	Offset Datum

Offset Design S14-T7S-R96W - Nolte 11B-24 - DD - Plan #3													Offset Site Error:	0.0 ft
Survey Program: 0-MWD													Offset Well Error:	0.0 ft
Reference		Offset		Semi Major Axis			Distance				Total	Separation	Warning	
Measured Depth (ft)	Vertical Depth (ft)	Measured Depth (ft)	Vertical Depth (ft)	Reference (ft)	Offset (ft)	Highside Toolface (°)	Offset Wellbore Centre +N/-S (ft)	+E/-W (ft)	Between Centres (ft)	Between Ellipses (ft)	Uncertainty Axis	Factor		
0.0	0.0	0.0	0.0	0.0	0.0	-169.86	-33.0	-5.9	33.5					
100.0	100.0	100.0	100.0	0.1	0.1	-169.86	-33.0	-5.9	33.5	33.3	0.26	131.226		
200.0	200.0	200.0	200.0	0.3	0.3	-169.86	-33.0	-5.9	33.5	32.9	0.60	55.456 CC, ES		
300.0	300.0	298.8	298.7	0.5	0.5	-173.01	-35.0	-4.3	35.3	34.3	0.96	36.820		
400.0	400.0	397.0	396.6	0.7	0.7	-167.68	-40.9	0.5	41.6	40.3	1.32	31.595 SF		
500.0	499.8	493.3	492.2	0.8	1.0	-176.49	-50.4	8.3	57.5	55.8	1.68	34.291		
600.0	599.3	586.4	583.8	1.1	1.3	177.28	-63.2	18.7	83.7	81.7	2.02	41.398		
700.0	698.0	675.1	670.2	1.4	1.7	173.46	-78.6	31.2	119.6	117.2	2.35	50.816		
800.0	795.8	758.5	750.6	1.7	2.1	171.08	-95.9	45.3	164.4	161.7	2.67	61.497		
900.0	892.4	835.8	824.2	2.2	2.6	169.49	-114.3	60.3	217.3	214.3	2.98	72.906		
1,000.0	987.5	906.7	890.7	2.8	3.0	168.32	-133.2	75.7	277.6	274.3	3.28	84.733		
1,100.0	1,080.9	970.9	950.2	3.4	3.5	167.35	-152.0	91.0	344.5	340.9	3.57	96.587		
1,200.0	1,172.2	1,028.4	1,002.7	4.2	3.9	166.45	-170.1	105.8	417.3	413.4	3.85	108.353		
1,300.0	1,261.3	1,079.4	1,048.6	5.0	4.3	165.54	-187.2	119.7	495.2	491.0	4.14	119.688		
1,400.0	1,347.9	1,123.9	1,088.3	5.9	4.7	164.52	-202.9	132.5	577.5	573.1	4.44	130.120		
1,500.0	1,432.9	1,163.8	1,123.4	6.8	5.1	164.54	-217.6	144.4	662.7	658.0	4.78	138.567		
1,600.0	1,517.9	1,200.0	1,154.9	7.7	5.4	164.62	-231.4	155.7	749.0	743.8	5.13	146.089		
1,700.0	1,602.9	1,236.2	1,186.1	8.7	5.8	164.67	-245.7	167.3	836.1	830.6	5.48	152.639		
1,800.0	1,687.8	1,269.1	1,214.1	9.6	6.1	164.68	-259.0	178.2	924.0	918.2	5.82	158.653		
1,900.0	1,772.8	1,300.0	1,240.2	10.5	6.4	164.68	-271.9	188.7	1,012.8	1,006.6	6.17	164.166		
2,000.0	1,857.8	1,329.3	1,264.6	11.5	6.7	164.66	-284.4	198.9	1,102.2	1,095.6	6.52	169.117		
2,100.0	1,942.8	1,356.8	1,287.4	12.4	7.0	164.63	-296.5	208.7	1,192.2	1,185.3	6.86	173.705		
2,200.0	2,027.8	1,400.0	1,322.6	13.3	7.5	164.58	-315.8	224.4	1,283.0	1,275.8	7.24	177.254		

Cathedral Energy Services

Anticollision Report

Company:	Caerus Oil & Gas (NAD 27)	Local Co-ordinate Reference:	Well Nolte 43B-14
Project:	Garfield County, CO	TVD Reference:	WELL @ 5117.8ft (Original Well Elev)
Reference Site:	S14-T7S-R96W	MD Reference:	WELL @ 5117.8ft (Original Well Elev)
Site Error:	0.0ft	North Reference:	True
Reference Well:	Nolte 43B-14	Survey Calculation Method:	Minimum Curvature
Well Error:	0.0ft	Output errors are at	2.00 sigma
Reference Wellbore	DD	Database:	USA EDM 5000 Multi Users DB
Reference Design:	Plan #3	Offset TVD Reference:	Offset Datum

Offset Design S14-T7S-R96W - Nolte 11C-24 - DD - Plan #3													Offset Site Error:	0.0 ft
Survey Program: 0-MWD													Offset Well Error:	0.0 ft
Reference		Offset		Semi Major Axis			Distance				Total	Separation	Warning	
Measured Depth (ft)	Vertical Depth (ft)	Measured Depth (ft)	Vertical Depth (ft)	Reference (ft)	Offset (ft)	Highside Toolface (°)	Offset Wellbore Centre +N/-S (ft)	+E/-W (ft)	Between Centres (ft)	Between Ellipses (ft)	Uncertainty Axis	Factor		
0.0	0.0	0.0	0.0	0.0	0.0	-166.53	-40.1	-9.6	42.3					
100.0	100.0	90.3	90.3	0.1	0.1	-166.53	-40.1	-9.6	41.2	41.0	0.26	159.432		
200.0	200.0	190.3	190.3	0.3	0.3	-166.53	-40.1	-9.6	41.2	40.6	0.60	68.161		
244.3	244.3	234.6	234.6	0.4	0.4	-166.53	-40.1	-9.6	41.2	40.5	0.76	54.278 CC, ES		
300.0	300.0	289.7	289.7	0.5	0.5	-166.95	-40.4	-9.4	41.5	40.6	0.95	43.549		
400.0	400.0	388.0	387.9	0.7	0.7	-158.29	-44.2	-6.8	45.4	44.1	1.31	34.780 SF		
500.0	499.8	484.8	484.2	0.8	0.9	-166.41	-52.1	-1.6	58.1	56.4	1.66	34.919		
600.0	599.3	578.8	577.2	1.1	1.2	-173.66	-63.6	6.1	81.0	79.0	2.01	40.268		
700.0	698.0	668.6	665.3	1.4	1.5	-178.67	-78.1	15.8	114.0	111.6	2.34	48.644		
800.0	795.8	753.3	747.5	1.7	1.9	178.07	-94.9	27.0	156.3	153.6	2.66	58.815		
900.0	892.4	832.0	823.1	2.2	2.3	175.89	-113.2	39.3	207.0	204.1	2.95	70.118		
1,000.0	987.5	900.0	887.5	2.8	2.7	174.42	-131.1	51.3	265.6	262.3	3.22	82.422		
1,100.0	1,080.9	970.0	953.1	3.4	3.2	173.17	-151.6	65.0	330.9	327.4	3.50	94.632		
1,200.0	1,172.2	1,028.9	1,007.5	4.2	3.6	172.20	-170.3	77.5	402.4	398.7	3.75	107.390		
1,300.0	1,261.3	1,081.1	1,055.1	5.0	4.0	171.32	-188.0	89.3	479.3	475.3	3.99	120.212		
1,400.0	1,347.9	1,126.8	1,096.3	5.9	4.3	170.44	-204.5	100.3	560.8	556.6	4.22	132.767		
1,500.0	1,432.9	1,167.7	1,132.8	6.8	4.7	170.24	-219.9	110.6	645.3	640.8	4.52	142.882		
1,600.0	1,517.9	1,200.0	1,161.3	7.7	5.0	170.14	-232.5	119.0	731.0	726.2	4.80	152.209		
1,700.0	1,602.9	1,241.9	1,197.9	8.7	5.4	170.00	-249.4	130.4	817.5	812.4	5.11	159.921		
1,800.0	1,687.8	1,275.6	1,227.0	9.6	5.7	169.88	-263.6	139.8	904.9	899.5	5.41	167.338		
1,900.0	1,772.8	1,300.0	1,247.9	10.5	5.9	169.80	-274.0	146.8	993.2	987.5	5.69	174.593		
2,000.0	1,857.8	1,337.2	1,279.4	11.5	6.3	169.67	-290.4	157.8	1,082.1	1,076.1	6.00	180.392		
2,100.0	1,942.8	1,365.3	1,303.0	12.4	6.6	169.57	-303.2	166.3	1,171.7	1,165.4	6.29	186.203		
2,200.0	2,027.8	1,400.0	1,331.8	13.3	6.9	169.45	-319.3	177.1	1,262.0	1,255.4	6.60	191.212		
2,300.0	2,112.8	1,400.0	1,331.8	14.3	6.9	169.45	-319.3	177.1	1,352.9	1,346.1	6.84	197.670		

Cathedral Energy Services

Anticollision Report

Company:	Caerus Oil & Gas (NAD 27)	Local Co-ordinate Reference:	Well Nolte 43B-14
Project:	Garfield County, CO	TVD Reference:	WELL @ 5117.8ft (Original Well Elev)
Reference Site:	S14-T7S-R96W	MD Reference:	WELL @ 5117.8ft (Original Well Elev)
Site Error:	0.0ft	North Reference:	True
Reference Well:	Nolte 43B-14	Survey Calculation Method:	Minimum Curvature
Well Error:	0.0ft	Output errors are at	2.00 sigma
Reference Wellbore	DD	Database:	USA EDM 5000 Multi Users DB
Reference Design:	Plan #3	Offset TVD Reference:	Offset Datum

Offset Design S14-T7S-R96W - Nolte 13A-13 - DD - Plan #3													Offset Site Error:	0.0 ft
Survey Program: 0-MWD													Offset Well Error:	0.0 ft
Reference		Offset		Semi Major Axis		Highside Toolface (°)	Distance		Total Uncertainty Axis	Separation Factor	Warning			
Measured Depth (ft)	Vertical Depth (ft)	Measured Depth (ft)	Vertical Depth (ft)	Reference (ft)	Offset (ft)		Offset Wellbore Centre +N/-S (ft)	+E/-W (ft)						
0.0	0.0	0.0	0.0	0.0	0.0	27.56	21.3	11.1	24.0					
100.0	100.0	100.0	100.0	0.1	0.1	27.56	21.3	11.1	24.0	23.7	0.26	93.991		
200.0	200.0	200.0	200.0	0.3	0.3	27.56	21.3	11.1	24.0	23.4	0.60	39.705 CC, ES		
300.0	300.0	298.7	298.6	0.5	0.5	27.94	23.4	12.4	26.6	25.6	0.95	27.931		
400.0	400.0	396.9	396.5	0.7	0.7	42.60	29.9	16.4	33.8	32.5	1.30	26.058		
500.0	499.8	494.4	493.3	0.8	1.0	47.68	40.6	23.0	43.0	41.3	1.65	26.038		
600.0	599.3	591.2	588.4	1.1	1.3	54.42	55.3	32.0	54.3	52.2	2.05	26.530		
700.0	698.0	686.9	681.6	1.4	1.7	61.22	73.9	43.4	68.3	65.8	2.54	26.887		
800.0	795.8	781.4	772.5	1.7	2.2	67.31	96.1	57.1	85.6	82.4	3.19	26.803		
900.0	892.4	874.6	860.7	2.2	2.8	72.43	121.7	72.9	106.3	102.3	4.03	26.392		
1,000.0	987.5	966.4	946.0	2.8	3.4	76.59	150.5	90.6	130.4	125.4	5.04	25.882		
1,100.0	1,080.9	1,056.5	1,028.1	3.4	4.1	79.90	182.1	110.1	158.0	151.8	6.21	25.418		
1,200.0	1,172.2	1,145.0	1,106.9	4.2	4.9	82.50	216.4	131.1	188.8	181.3	7.53	25.055		
1,300.0	1,261.3	1,231.8	1,182.3	5.0	5.7	84.52	252.9	153.6	222.8	213.8	8.98	24.795		
1,400.0	1,347.9	1,316.8	1,254.2	5.9	6.5	86.06	291.5	177.4	259.7	249.2	10.55	24.625		
1,500.0	1,432.9	1,400.0	1,322.6	6.8	7.4	87.98	332.0	202.2	299.6	287.4	12.20	24.559 SF		
1,600.0	1,517.9	1,481.9	1,387.8	7.7	8.4	89.05	374.2	228.2	342.2	328.3	13.86	24.694		
1,700.0	1,602.9	1,561.9	1,449.4	8.7	9.3	89.42	417.7	254.9	387.1	371.6	15.50	24.983		
1,800.0	1,687.8	1,639.9	1,507.3	9.6	10.3	89.34	462.1	282.3	434.3	417.2	17.10	25.394		
1,900.0	1,772.8	1,726.5	1,570.2	10.5	11.4	89.03	512.8	313.4	482.8	464.0	18.78	25.713		
2,000.0	1,857.8	1,813.9	1,633.8	11.5	12.5	88.78	563.9	344.9	531.2	510.8	20.46	25.967		
2,100.0	1,942.8	1,901.4	1,697.3	12.4	13.6	88.58	615.1	376.4	579.7	557.6	22.14	26.179		
2,200.0	2,027.8	1,988.8	1,760.9	13.3	14.8	88.40	666.3	407.9	628.2	604.4	23.83	26.359		
2,300.0	2,112.8	2,076.3	1,824.4	14.3	15.9	88.25	717.5	439.3	676.7	651.2	25.52	26.514		
2,400.0	2,197.7	2,163.7	1,887.9	15.2	17.0	88.12	768.6	470.8	725.2	698.0	27.21	26.648		
2,500.0	2,282.7	2,251.2	1,951.5	16.2	18.1	88.00	819.8	502.3	773.7	744.8	28.91	26.765		
2,600.0	2,367.7	2,338.6	2,015.0	17.1	19.2	87.90	871.0	533.8	822.2	791.6	30.60	26.869		
2,700.0	2,452.7	2,426.1	2,078.6	18.0	20.4	87.81	922.2	565.3	870.6	838.4	32.29	26.962		
2,800.0	2,537.7	2,513.5	2,142.1	19.0	21.5	87.73	973.3	596.7	919.1	885.2	33.99	27.044		
2,900.0	2,622.7	2,601.0	2,205.6	19.9	22.6	87.66	1,024.5	628.2	967.6	932.0	35.68	27.119		
3,000.0	2,707.9	2,688.4	2,269.2	20.8	23.7	88.24	1,075.7	659.7	1,016.2	978.6	37.52	27.081		
3,100.0	2,795.2	2,775.6	2,332.5	21.7	24.8	89.56	1,126.7	691.1	1,064.8	1,025.3	39.47	26.976		
3,200.0	2,885.0	2,862.3	2,395.5	22.4	26.0	90.61	1,177.4	722.3	1,113.5	1,072.2	41.29	26.965		
3,300.0	2,977.0	2,997.7	2,496.7	23.1	27.6	91.07	1,254.1	769.4	1,160.7	1,117.4	43.28	26.821		
3,400.0	3,070.9	3,147.8	2,615.9	23.7	29.2	91.36	1,331.7	817.2	1,203.7	1,158.5	45.13	26.668		
3,500.0	3,166.5	3,306.7	2,749.5	24.2	30.7	91.55	1,404.9	862.2	1,241.8	1,195.0	46.82	26.522		
3,600.0	3,263.4	3,474.2	2,897.5	24.6	32.1	91.66	1,471.5	903.2	1,274.6	1,226.3	48.28	26.400		
3,700.0	3,361.6	3,649.7	3,059.4	24.9	33.2	91.70	1,529.2	938.7	1,301.7	1,252.2	49.49	26.301		
3,800.0	3,460.6	3,832.4	3,233.7	25.1	34.2	91.67	1,575.5	967.2	1,322.5	1,272.1	50.42	26.230		
3,900.0	3,560.1	4,020.6	3,417.9	25.3	34.8	91.60	1,608.2	987.3	1,336.8	1,285.7	51.04	26.189		
4,000.0	3,660.1	4,212.6	3,608.8	25.4	35.1	91.49	1,625.5	997.9	1,344.1	1,292.8	51.34	26.181		
4,100.0	3,760.1	4,364.0	3,760.1	25.4	35.2	78.23	1,628.0	999.5	1,345.2	1,293.7	51.45	26.146		
4,200.0	3,860.1	4,464.0	3,860.1	25.5	35.2	78.23	1,628.0	999.5	1,345.2	1,293.6	51.55	26.095		
4,300.0	3,960.1	4,564.0	3,960.1	25.5	35.3	78.23	1,628.0	999.5	1,345.2	1,293.5	51.65	26.043		
4,400.0	4,060.1	4,664.0	4,060.1	25.6	35.3	78.23	1,628.0	999.5	1,345.2	1,293.4	51.76	25.990		
4,500.0	4,160.1	4,764.0	4,160.1	25.6	35.3	78.23	1,628.0	999.5	1,345.2	1,293.3	51.86	25.936		
4,600.0	4,260.1	4,864.0	4,260.1	25.7	35.4	78.23	1,628.0	999.5	1,345.2	1,293.2	51.97	25.882		
4,700.0	4,360.1	4,964.0	4,360.1	25.7	35.4	78.23	1,628.0	999.5	1,345.2	1,293.1	52.09	25.826		
4,800.0	4,460.1	5,064.0	4,460.1	25.8	35.5	78.23	1,628.0	999.5	1,345.2	1,293.0	52.20	25.770		
4,900.0	4,560.1	5,164.0	4,560.1	25.8	35.5	78.23	1,628.0	999.5	1,345.2	1,292.9	52.31	25.713		
5,000.0	4,660.1	5,264.0	4,660.1	25.9	35.6	78.23	1,628.0	999.5	1,345.2	1,292.7	52.43	25.656		
5,100.0	4,760.1	5,364.0	4,760.1	26.0	35.6	78.23	1,628.0	999.5	1,345.2	1,292.6	52.55	25.597		

CC - Min centre to center distance or convergent point, SF - min separation factor, ES - min ellipse separation

Cathedral Energy Services

Anticollision Report

Company:	Caerus Oil & Gas (NAD 27)	Local Co-ordinate Reference:	Well Nolte 43B-14
Project:	Garfield County, CO	TVD Reference:	WELL @ 5117.8ft (Original Well Elev)
Reference Site:	S14-T7S-R96W	MD Reference:	WELL @ 5117.8ft (Original Well Elev)
Site Error:	0.0ft	North Reference:	True
Reference Well:	Nolte 43B-14	Survey Calculation Method:	Minimum Curvature
Well Error:	0.0ft	Output errors are at	2.00 sigma
Reference Wellbore	DD	Database:	USA EDM 5000 Multi Users DB
Reference Design:	Plan #3	Offset TVD Reference:	Offset Datum

Offset Design S14-T7S-R96W - Nolte 13A-13 - DD - Plan #3													Offset Site Error:	0.0 ft
Survey Program: 0-MWD													Offset Well Error:	0.0 ft
Reference		Offset		Semi Major Axis			Distance						Warning	
Measured Depth (ft)	Vertical Depth (ft)	Measured Depth (ft)	Vertical Depth (ft)	Reference (ft)	Offset (ft)	Highside Toolface (°)	Offset Wellbore Centre +N/-S (ft)	+E/-W (ft)	Between Centres (ft)	Between Ellipses (ft)	Total Uncertainty Axis	Separation Factor		
5,200.0	4,860.1	5,464.0	4,860.1	26.0	35.6	78.23	1,628.0	999.5	1,345.2	1,292.5	52.67	25.538		
5,300.0	4,960.1	5,564.0	4,960.1	26.1	35.7	78.23	1,628.0	999.5	1,345.2	1,292.4	52.80	25.478		
5,400.0	5,060.1	5,664.0	5,060.1	26.1	35.7	78.23	1,628.0	999.5	1,345.2	1,292.3	52.92	25.418		
5,500.0	5,160.1	5,764.0	5,160.1	26.2	35.8	78.23	1,628.0	999.5	1,345.2	1,292.1	53.05	25.357		
5,600.0	5,260.1	5,864.0	5,260.1	26.3	35.8	78.23	1,628.0	999.5	1,345.2	1,292.0	53.18	25.295		
5,700.0	5,360.1	5,964.0	5,360.1	26.3	35.9	78.23	1,628.0	999.5	1,345.2	1,291.9	53.31	25.232		
5,800.0	5,460.1	6,064.0	5,460.1	26.4	35.9	78.23	1,628.0	999.5	1,345.2	1,291.7	53.45	25.169		
5,900.0	5,560.1	6,164.0	5,560.1	26.5	36.0	78.23	1,628.0	999.5	1,345.2	1,291.6	53.58	25.106		
6,000.0	5,660.1	6,264.0	5,660.1	26.5	36.0	78.23	1,628.0	999.5	1,345.2	1,291.5	53.72	25.041		
6,100.0	5,760.1	6,364.0	5,760.1	26.6	36.1	78.23	1,628.0	999.5	1,345.2	1,291.3	53.86	24.976		
6,200.0	5,860.1	6,464.0	5,860.1	26.7	36.1	78.23	1,628.0	999.5	1,345.2	1,291.2	54.00	24.911		
6,229.9	5,890.0	6,493.9	5,890.0	26.7	36.2	78.23	1,628.0	999.5	1,345.2	1,291.1	54.04	24.891		

Cathedral Energy Services

Anticollision Report

Company:	Caerus Oil & Gas (NAD 27)	Local Co-ordinate Reference:	Well Nolte 43B-14
Project:	Garfield County, CO	TVD Reference:	WELL @ 5117.8ft (Original Well Elev)
Reference Site:	S14-T7S-R96W	MD Reference:	WELL @ 5117.8ft (Original Well Elev)
Site Error:	0.0ft	North Reference:	True
Reference Well:	Nolte 43B-14	Survey Calculation Method:	Minimum Curvature
Well Error:	0.0ft	Output errors are at	2.00 sigma
Reference Wellbore	DD	Database:	USA EDM 5000 Multi Users DB
Reference Design:	Plan #3	Offset TVD Reference:	Offset Datum

Offset Design S14-T7S-R96W - Nolte 13B-13 - DD - Plan #3													Offset Site Error: 0.0 ft	
Survey Program: 0-MWD													Offset Well Error: 0.0 ft	
Reference		Offset		Semi Major Axis			Distance						Warning	
Measured Depth (ft)	Vertical Depth (ft)	Measured Depth (ft)	Vertical Depth (ft)	Reference (ft)	Offset (ft)	Highside Toolface (°)	Offset Wellbore Centre +N/-S (ft)	+E/-W (ft)	Between Centres (ft)	Between Ellipses (ft)	Total Uncertainty Axis	Separation Factor		
0.0	0.0	0.0	0.0	0.0	0.0	27.56	14.2	7.4	16.0					
100.0	100.0	100.0	100.0	0.1	0.1	27.56	14.2	7.4	16.0	15.7	0.26	62.703		
200.0	200.0	200.0	200.0	0.3	0.3	27.56	14.2	7.4	16.0	15.4	0.60	26.478		
233.4	233.4	233.4	233.4	0.4	0.4	27.56	14.2	7.4	16.0	15.3	0.72	22.198	CC, ES	
300.0	300.0	299.6	299.6	0.5	0.5	27.95	14.7	7.8	16.6	15.7	0.95	17.466		
400.0	400.0	398.5	398.4	0.7	0.7	44.60	18.7	10.9	21.3	20.0	1.30	16.378	SF	
500.0	499.8	496.9	496.2	0.8	0.9	54.14	26.8	17.2	28.3	26.6	1.66	17.063		
600.0	599.3	594.5	592.6	1.1	1.2	65.10	38.7	26.4	38.3	36.3	2.07	18.555		
700.0	698.0	691.1	687.2	1.4	1.6	74.48	54.3	38.5	52.4	49.8	2.60	20.183		
800.0	795.8	786.3	779.3	1.7	2.0	81.59	73.3	53.2	70.8	67.5	3.29	21.529		
900.0	892.4	880.1	868.7	2.2	2.6	86.76	95.6	70.5	93.5	89.4	4.15	22.551		
1,000.0	987.5	972.2	955.1	2.8	3.2	90.47	120.8	90.1	120.4	115.2	5.16	23.337		
1,100.0	1,080.9	1,062.4	1,038.1	3.4	3.8	93.11	148.7	111.7	151.2	144.9	6.31	23.969		
1,200.0	1,172.2	1,150.6	1,117.6	4.2	4.6	94.98	178.9	135.1	185.8	178.2	7.58	24.503		
1,300.0	1,261.3	1,236.8	1,193.5	5.0	5.3	96.27	211.2	160.2	224.0	215.0	8.97	24.971		
1,400.0	1,347.9	1,320.9	1,265.6	5.9	6.1	97.12	245.3	186.6	265.5	255.1	10.46	25.392		
1,500.0	1,432.9	1,403.0	1,334.3	6.8	7.0	98.55	281.0	214.3	310.0	298.0	12.03	25.770		
1,600.0	1,517.9	1,485.3	1,401.0	7.7	7.9	99.25	319.0	243.7	356.7	343.1	13.62	26.180		
1,700.0	1,602.9	1,573.4	1,471.8	8.7	8.9	99.67	360.4	275.8	404.0	388.7	15.27	26.464		
1,800.0	1,687.8	1,661.4	1,542.6	9.6	9.8	100.00	401.8	307.9	451.4	434.5	16.92	26.684		
1,900.0	1,772.8	1,749.5	1,613.4	10.5	10.8	100.27	443.2	340.0	498.7	480.2	18.57	26.859		
2,000.0	1,857.8	1,837.5	1,684.1	11.5	11.8	100.50	484.6	372.1	546.1	525.9	20.22	27.002		
2,100.0	1,942.8	1,925.6	1,754.9	12.4	12.8	100.68	526.0	404.2	593.5	571.6	21.88	27.119		
2,200.0	2,027.8	2,013.6	1,825.7	13.3	13.7	100.84	567.4	436.3	640.9	617.3	23.54	27.218		
2,300.0	2,112.8	2,101.7	1,896.5	14.3	14.7	100.98	608.8	468.3	688.2	663.0	25.21	27.303		
2,400.0	2,197.7	2,189.7	1,967.2	15.2	15.7	101.10	650.2	500.4	735.6	708.7	26.87	27.375		
2,500.0	2,282.7	2,277.8	2,038.0	16.2	16.7	101.21	691.6	532.5	783.0	754.5	28.54	27.438		
2,600.0	2,367.7	2,365.8	2,108.8	17.1	17.7	101.30	733.0	564.6	830.4	800.2	30.20	27.493		
2,700.0	2,452.7	2,453.9	2,179.6	18.0	18.6	101.38	774.4	596.7	877.8	845.9	31.87	27.542		
2,800.0	2,537.7	2,541.9	2,250.4	19.0	19.6	101.46	815.8	628.8	925.2	891.6	33.54	27.585		
2,900.0	2,622.7	2,630.0	2,321.1	19.9	20.6	101.53	857.2	660.9	972.6	937.4	35.21	27.624		
3,000.0	2,707.9	2,718.1	2,391.9	20.8	21.6	102.19	898.6	693.0	1,019.9	982.9	36.97	27.587		
3,100.0	2,795.2	2,806.5	2,463.0	21.7	22.6	103.51	940.1	725.2	1,066.4	1,027.6	38.78	27.499		
3,200.0	2,885.0	2,895.2	2,534.3	22.4	23.6	104.50	981.8	757.5	1,111.9	1,071.4	40.49	27.459		
3,300.0	2,977.0	3,005.9	2,624.0	23.1	24.8	105.05	1,033.1	797.3	1,155.8	1,113.6	42.25	27.357		
3,400.0	3,070.9	3,142.5	2,739.3	23.7	26.1	105.32	1,091.0	842.2	1,195.7	1,151.7	43.99	27.184		
3,500.0	3,166.5	3,285.8	2,865.5	24.2	27.3	105.52	1,144.5	883.7	1,230.7	1,185.2	45.55	27.019		
3,600.0	3,263.4	3,435.3	3,002.3	24.6	28.3	105.65	1,192.3	920.7	1,260.5	1,213.6	46.90	26.878		
3,700.0	3,361.6	3,590.5	3,148.7	24.9	29.2	105.71	1,232.7	952.0	1,284.7	1,236.7	48.01	26.758		
3,800.0	3,460.6	3,750.5	3,303.5	25.1	29.8	105.73	1,264.4	976.6	1,302.9	1,254.1	48.85	26.672		
3,900.0	3,560.1	3,914.1	3,464.8	25.3	30.3	105.70	1,286.2	993.5	1,315.1	1,265.6	49.42	26.610		
4,000.0	3,660.1	4,080.0	3,630.1	25.4	30.5	105.63	1,297.0	1,001.9	1,320.8	1,271.1	49.69	26.582		
4,100.0	3,760.1	4,210.0	3,760.1	25.4	30.6	92.40	1,298.2	1,002.8	1,321.4	1,271.5	49.81	26.530		
4,200.0	3,860.1	4,310.0	3,860.1	25.5	30.6	92.40	1,298.2	1,002.8	1,321.4	1,271.4	49.91	26.476		
4,300.0	3,960.1	4,410.0	3,960.1	25.5	30.7	92.40	1,298.2	1,002.8	1,321.4	1,271.3	50.01	26.421		
4,400.0	4,060.1	4,510.0	4,060.1	25.6	30.7	92.40	1,298.2	1,002.8	1,321.4	1,271.2	50.12	26.365		
4,500.0	4,160.1	4,610.0	4,160.1	25.6	30.8	92.40	1,298.2	1,002.8	1,321.4	1,271.1	50.23	26.307		
4,600.0	4,260.1	4,710.0	4,260.1	25.7	30.8	92.40	1,298.2	1,002.8	1,321.4	1,271.0	50.34	26.249		
4,700.0	4,360.1	4,810.0	4,360.1	25.7	30.8	92.40	1,298.2	1,002.8	1,321.4	1,270.9	50.45	26.191		
4,800.0	4,460.1	4,910.0	4,460.1	25.8	30.9	92.40	1,298.2	1,002.8	1,321.4	1,270.8	50.57	26.131		
4,900.0	4,560.1	5,010.0	4,560.1	25.8	30.9	92.40	1,298.2	1,002.8	1,321.4	1,270.7	50.68	26.070		
5,000.0	4,660.1	5,110.0	4,660.1	25.9	31.0	92.40	1,298.2	1,002.8	1,321.4	1,270.6	50.80	26.009		

CC - Min centre to center distance or convergent point, SF - min separation factor, ES - min ellipse separation

Cathedral Energy Services

Anticollision Report

Company:	Caerus Oil & Gas (NAD 27)	Local Co-ordinate Reference:	Well Nolte 43B-14
Project:	Garfield County, CO	TVD Reference:	WELL @ 5117.8ft (Original Well Elev)
Reference Site:	S14-T7S-R96W	MD Reference:	WELL @ 5117.8ft (Original Well Elev)
Site Error:	0.0ft	North Reference:	True
Reference Well:	Nolte 43B-14	Survey Calculation Method:	Minimum Curvature
Well Error:	0.0ft	Output errors are at	2.00 sigma
Reference Wellbore	DD	Database:	USA EDM 5000 Multi Users DB
Reference Design:	Plan #3	Offset TVD Reference:	Offset Datum

Offset Design S14-T7S-R96W - Nolte 13B-13 - DD - Plan #3												Offset Site Error:	0.0 ft
Survey Program: 0-MWD												Offset Well Error:	0.0 ft
Reference		Offset		Semi Major Axis			Distance						Warning
Measured Depth (ft)	Vertical Depth (ft)	Measured Depth (ft)	Vertical Depth (ft)	Reference (ft)	Offset (ft)	Highside Toolface (°)	Offset Wellbore Centre +N/-S (ft)	+E/-W (ft)	Between Centres (ft)	Between Ellipses (ft)	Total Uncertainty Axis	Separation Factor	
5,100.0	4,760.1	5,210.0	4,760.1	26.0	31.0	92.40	1,298.2	1,002.8	1,321.4	1,270.4	50.93	25.947	
5,200.0	4,860.1	5,310.0	4,860.1	26.0	31.1	92.40	1,298.2	1,002.8	1,321.4	1,270.3	51.05	25.884	
5,300.0	4,960.1	5,410.0	4,960.1	26.1	31.1	92.40	1,298.2	1,002.8	1,321.4	1,270.2	51.17	25.820	
5,400.0	5,060.1	5,510.0	5,060.1	26.1	31.2	92.40	1,298.2	1,002.8	1,321.4	1,270.1	51.30	25.756	
5,500.0	5,160.1	5,610.0	5,160.1	26.2	31.3	92.40	1,298.2	1,002.8	1,321.4	1,269.9	51.43	25.691	
5,600.0	5,260.1	5,710.0	5,260.1	26.3	31.3	92.40	1,298.2	1,002.8	1,321.4	1,269.8	51.56	25.625	
5,700.0	5,360.1	5,810.0	5,360.1	26.3	31.4	92.40	1,298.2	1,002.8	1,321.4	1,269.7	51.70	25.559	
5,800.0	5,460.1	5,910.0	5,460.1	26.4	31.4	92.40	1,298.2	1,002.8	1,321.4	1,269.5	51.83	25.492	
5,900.0	5,560.1	6,010.0	5,560.1	26.5	31.5	92.40	1,298.2	1,002.8	1,321.4	1,269.4	51.97	25.424	
6,000.0	5,660.1	6,110.0	5,660.1	26.5	31.5	92.40	1,298.2	1,002.8	1,321.4	1,269.2	52.11	25.356	
6,100.0	5,760.1	6,210.0	5,760.1	26.6	31.6	92.40	1,298.2	1,002.8	1,321.4	1,269.1	52.25	25.287	
6,200.0	5,860.1	6,310.0	5,860.1	26.7	31.7	92.40	1,298.2	1,002.8	1,321.4	1,269.0	52.40	25.217	
6,229.9	5,890.0	6,340.0	5,890.0	26.7	31.7	92.40	1,298.2	1,002.8	1,321.4	1,268.9	52.44	25.197	

Cathedral Energy Services

Anticollision Report

Company:	Caerus Oil & Gas (NAD 27)	Local Co-ordinate Reference:	Well Nolte 43B-14
Project:	Garfield County, CO	TVD Reference:	WELL @ 5117.8ft (Original Well Elev)
Reference Site:	S14-T7S-R96W	MD Reference:	WELL @ 5117.8ft (Original Well Elev)
Site Error:	0.0ft	North Reference:	True
Reference Well:	Nolte 43B-14	Survey Calculation Method:	Minimum Curvature
Well Error:	0.0ft	Output errors are at	2.00 sigma
Reference Wellbore	DD	Database:	USA EDM 5000 Multi Users DB
Reference Design:	Plan #3	Offset TVD Reference:	Offset Datum

Offset Design S14-T7S-R96W - Nolte 13C-13 - DD - Plan #3													Offset Site Error:	0.0 ft
Survey Program: 0-MWD													Offset Well Error:	0.0 ft
Reference		Offset		Semi Major Axis		Highside Toolface (°)	Distance		Total Uncertainty Axis	Separation Factor	Warning			
Measured Depth (ft)	Vertical Depth (ft)	Measured Depth (ft)	Vertical Depth (ft)	Reference (ft)	Offset (ft)		Offset Wellbore Centre +N/-S (ft)	+E/-W (ft)						
0.0	0.0	0.0	0.0	0.0	0.0	50.18	16.6	20.0	26.0					
100.0	100.0	99.8	99.8	0.1	0.1	50.18	16.6	20.0	26.0	25.7	102.146			
200.0	200.0	199.8	199.8	0.3	0.3	50.18	16.6	20.0	26.0	25.4	43.081 CC, ES			
300.0	300.0	298.4	298.3	0.5	0.5	49.81	18.4	21.8	28.6	27.6	30.039			
400.0	400.0	396.5	396.1	0.7	0.7	63.01	23.7	27.2	36.0	34.7	27.735 SF			
500.0	499.8	493.8	492.6	0.8	1.0	67.33	32.3	36.2	46.5	44.9	28.072			
600.0	599.3	589.9	587.2	1.1	1.3	73.46	44.2	48.5	60.6	58.5	29.202			
700.0	698.0	684.7	679.5	1.4	1.7	79.44	59.1	64.0	78.8	76.2	30.284			
800.0	795.8	777.7	768.9	1.7	2.2	84.50	76.9	82.4	101.4	98.1	31.005			
900.0	892.4	868.7	855.1	2.2	2.8	88.53	97.1	103.4	128.5	124.4	31.424			
1,000.0	987.5	957.5	937.8	2.8	3.4	91.61	119.6	126.7	160.1	155.0	31.690			
1,100.0	1,080.9	1,044.0	1,016.8	3.4	4.1	93.91	144.1	152.0	195.9	189.8	31.904			
1,200.0	1,172.2	1,128.0	1,091.9	4.2	4.8	95.57	170.1	179.0	235.8	228.5	32.148			
1,300.0	1,261.3	1,215.2	1,168.5	5.0	5.5	97.07	199.0	208.9	278.9	270.2	32.213			
1,400.0	1,347.9	1,303.5	1,246.1	5.9	6.3	98.76	228.3	239.3	323.3	313.3	32.053			
1,500.0	1,432.9	1,391.0	1,323.0	6.8	7.1	101.52	257.4	269.4	369.0	357.4	31.799			
1,600.0	1,517.9	1,478.5	1,399.9	7.7	7.9	103.81	286.4	299.5	415.2	402.1	31.655			
1,700.0	1,602.9	1,566.1	1,476.8	8.7	8.7	105.65	315.5	329.6	461.9	447.3	31.591			
1,800.0	1,687.8	1,653.6	1,553.6	9.6	9.4	107.16	344.6	359.7	508.9	492.8	31.572			
1,900.0	1,772.8	1,741.1	1,630.5	10.5	10.2	108.41	373.6	389.9	556.1	538.5	31.581			
2,000.0	1,857.8	1,828.7	1,707.4	11.5	11.0	109.47	402.7	420.0	603.5	584.5	31.606			
2,100.0	1,942.8	1,916.2	1,784.3	12.4	11.8	110.38	431.7	450.1	651.1	630.5	31.640			
2,200.0	2,027.8	2,003.8	1,861.2	13.3	12.6	111.16	460.8	480.2	698.7	676.7	31.680			
2,300.0	2,112.8	2,091.3	1,938.1	14.3	13.4	111.85	489.9	510.3	746.5	722.9	31.722			
2,400.0	2,197.7	2,178.8	2,015.0	15.2	14.1	112.45	518.9	540.4	794.3	769.3	31.765			
2,500.0	2,282.7	2,266.4	2,091.9	16.2	14.9	112.98	548.0	570.5	842.2	815.7	31.807			
2,600.0	2,367.7	2,353.9	2,168.7	17.1	15.7	113.46	577.0	600.6	890.1	862.1	31.849			
2,700.0	2,452.7	2,441.5	2,245.6	18.0	16.5	113.89	606.1	630.8	938.1	908.6	31.890			
2,800.0	2,537.7	2,529.0	2,322.5	19.0	17.3	114.28	635.2	660.9	986.1	955.2	31.930			
2,900.0	2,622.7	2,616.5	2,399.4	19.9	18.1	114.63	664.2	691.0	1,034.1	1,001.7	31.968			
3,000.0	2,707.9	2,704.2	2,476.4	20.8	18.9	115.52	693.3	721.1	1,082.0	1,048.1	31.945			
3,100.0	2,795.2	2,792.8	2,554.2	21.7	19.7	116.98	722.7	751.6	1,128.3	1,092.9	31.859			
3,200.0	2,885.0	2,882.4	2,633.0	22.4	20.5	118.08	752.5	782.5	1,172.4	1,135.5	31.775			
3,300.0	2,977.0	2,972.8	2,712.3	23.1	21.3	118.86	782.5	813.5	1,214.4	1,176.1	31.691			
3,400.0	3,070.9	3,071.3	2,798.9	23.7	22.1	119.31	815.1	847.3	1,254.1	1,214.4	31.572			
3,500.0	3,166.5	3,206.0	2,920.2	24.2	23.2	119.41	855.8	889.5	1,289.6	1,248.4	31.303			
3,600.0	3,263.4	3,346.6	3,050.8	24.6	24.1	119.46	891.8	926.8	1,319.5	1,277.0	31.076			
3,700.0	3,361.6	3,492.4	3,189.9	24.9	24.8	119.48	922.0	958.1	1,343.6	1,300.1	30.878			

Cathedral Energy Services

Anticollision Report

Company:	Caerus Oil & Gas (NAD 27)	Local Co-ordinate Reference:	Well Nolte 43B-14
Project:	Garfield County, CO	TVD Reference:	WELL @ 5117.8ft (Original Well Elev)
Reference Site:	S14-T7S-R96W	MD Reference:	WELL @ 5117.8ft (Original Well Elev)
Site Error:	0.0ft	North Reference:	True
Reference Well:	Nolte 43B-14	Survey Calculation Method:	Minimum Curvature
Well Error:	0.0ft	Output errors are at	2.00 sigma
Reference Wellbore	DD	Database:	USA EDM 5000 Multi Users DB
Reference Design:	Plan #3	Offset TVD Reference:	Offset Datum

Offset Design S14-T7S-R96W - Nolte 13D-13 - DD - Plan #3													Offset Site Error:	0.0 ft
Survey Program: 0-MWD													Offset Well Error:	0.0 ft
Reference		Offset		Semi Major Axis			Distance				Total	Separation	Warning	
Measured Depth (ft)	Vertical Depth (ft)	Measured Depth (ft)	Vertical Depth (ft)	Reference (ft)	Offset (ft)	Highside Toolface (°)	Offset Wellbore Centre +N/-S (ft)	+E/-W (ft)	Between Centres (ft)	Between Ellipses (ft)	Uncertainty Axis	Factor		
0.0	0.0	0.0	0.0	0.0	0.0	59.57	9.6	16.3	18.9					
100.0	100.0	100.0	100.0	0.1	0.1	59.57	9.6	16.3	18.9	18.6	0.25	74.109		
200.0	200.0	200.0	200.0	0.3	0.3	59.57	9.6	16.3	18.9	18.3	0.60	31.257		
300.0	300.0	300.0	300.0	0.5	0.5	59.57	9.6	16.3	18.9	17.9	0.95	19.805 CC, ES		
400.0	400.0	398.9	398.9	0.7	0.7	74.16	10.9	18.4	21.3	20.0	1.30	16.358 SF		
500.0	499.8	497.4	497.0	0.8	0.9	83.29	15.0	24.9	28.0	26.3	1.66	16.805		
600.0	599.3	594.8	593.7	1.1	1.1	93.68	21.7	35.5	40.0	37.9	2.08	19.194		
700.0	698.0	690.8	688.0	1.4	1.5	101.46	30.9	49.9	58.1	55.5	2.60	22.317		
800.0	795.8	784.8	779.6	1.7	1.9	106.57	42.3	68.0	82.2	78.9	3.24	25.376		
900.0	892.4	876.4	867.7	2.2	2.3	109.82	55.7	89.2	111.9	107.9	3.99	28.050		
1,000.0	987.5	965.4	952.0	2.8	2.9	111.84	70.9	113.2	147.1	142.3	4.86	30.295		
1,100.0	1,080.9	1,051.5	1,032.2	3.4	3.5	113.04	87.6	139.6	187.4	181.6	5.83	32.170		
1,200.0	1,172.2	1,134.9	1,108.6	4.2	4.1	113.68	105.6	168.0	232.5	225.6	6.88	33.805		
1,300.0	1,261.3	1,222.0	1,187.6	5.0	4.8	114.44	125.2	198.9	280.8	272.8	8.03	34.972		
1,400.0	1,347.9	1,307.5	1,265.2	5.9	5.4	115.37	144.4	229.3	331.3	322.1	9.23	35.880		
1,500.0	1,432.9	1,391.9	1,341.7	6.8	6.1	117.53	163.4	259.2	383.5	373.0	10.49	36.566		
1,600.0	1,517.9	1,476.2	1,418.3	7.7	6.7	119.32	182.4	289.2	436.1	424.3	11.74	37.132		
1,700.0	1,602.9	1,560.6	1,494.9	8.7	7.4	120.72	201.3	319.1	488.8	475.8	13.00	37.618		
1,800.0	1,687.8	1,645.0	1,571.5	9.6	8.1	121.86	220.3	349.1	541.8	527.6	14.24	38.036		
1,900.0	1,772.8	1,729.4	1,648.0	10.5	8.7	122.79	239.3	379.0	594.9	579.4	15.49	38.401		
2,000.0	1,857.8	1,813.8	1,724.6	11.5	9.4	123.57	258.2	409.0	648.1	631.3	16.74	38.720		
2,100.0	1,942.8	1,898.1	1,801.2	12.4	10.1	124.23	277.2	439.0	701.3	683.3	17.98	39.001		
2,200.0	2,027.8	1,982.5	1,877.7	13.3	10.7	124.80	296.2	468.9	754.6	735.4	19.23	39.251		
2,300.0	2,112.8	2,066.9	1,954.3	14.3	11.4	125.30	315.1	498.9	808.0	787.5	20.47	39.474		
2,400.0	2,197.7	2,151.3	2,030.9	15.2	12.1	125.73	334.1	528.8	861.4	839.7	21.71	39.674		
2,500.0	2,282.7	2,235.7	2,107.4	16.2	12.8	126.12	353.1	558.8	914.8	891.9	22.95	39.855		
2,600.0	2,367.7	2,320.0	2,184.0	17.1	13.4	126.46	372.0	588.7	968.3	944.1	24.20	40.018		
2,700.0	2,452.7	2,404.4	2,260.6	18.0	14.1	126.76	391.0	618.7	1,021.8	996.3	25.44	40.168		
2,800.0	2,537.7	2,488.8	2,337.1	19.0	14.8	127.04	410.0	648.6	1,075.3	1,048.6	26.68	40.304		
2,900.0	2,622.7	2,573.2	2,413.7	19.9	15.4	127.29	428.9	678.6	1,128.8	1,100.8	27.92	40.430		
3,000.0	2,707.9	2,657.7	2,490.4	20.8	16.1	128.09	447.9	708.6	1,182.1	1,152.9	29.19	40.489		
3,100.0	2,795.2	2,743.7	2,568.4	21.7	16.8	129.49	467.3	739.1	1,233.1	1,202.6	30.49	40.449		
3,200.0	2,885.0	2,831.2	2,647.9	22.4	17.5	130.55	487.0	770.2	1,281.3	1,249.5	31.75	40.357		
3,300.0	2,977.0	2,920.1	2,728.5	23.1	18.2	131.31	506.9	801.7	1,326.4	1,293.5	32.98	40.218		

Cathedral Energy Services

Anticollision Report

Company:	Caerus Oil & Gas (NAD 27)	Local Co-ordinate Reference:	Well Nolte 43B-14
Project:	Garfield County, CO	TVD Reference:	WELL @ 5117.8ft (Original Well Elev)
Reference Site:	S14-T7S-R96W	MD Reference:	WELL @ 5117.8ft (Original Well Elev)
Site Error:	0.0ft	North Reference:	True
Reference Well:	Nolte 43B-14	Survey Calculation Method:	Minimum Curvature
Well Error:	0.0ft	Output errors are at	2.00 sigma
Reference Wellbore	DD	Database:	USA EDM 5000 Multi Users DB
Reference Design:	Plan #3	Offset TVD Reference:	Offset Datum

Offset Design S14-T7S-R96W - Nolte 14A-13 - DD - Plan #3														Offset Site Error:	0.0 ft
Survey Program: 0-MWD														Offset Well Error:	0.0 ft
Reference		Offset		Semi Major Axis		Distance									
Measured Depth (ft)	Vertical Depth (ft)	Measured Depth (ft)	Vertical Depth (ft)	Reference (ft)	Offset (ft)	Highside Toolface (°)	Offset Wellbore Centre +N/-S (ft)	+E/-W (ft)	Between Centres (ft)	Between Ellipses (ft)	Total Uncertainty Axis	Separation Factor	Warning		
0.0	0.0	0.0	0.0	0.0	0.0	78.91	2.5	12.6	12.8						
100.0	100.0	100.0	100.0	0.1	0.1	78.91	2.5	12.6	12.8	12.6	0.25	50.309			
200.0	200.0	200.0	200.0	0.3	0.3	78.91	2.5	12.6	12.8	12.2	0.60	21.218			
300.0	300.0	300.0	300.0	0.5	0.5	78.91	2.5	12.6	12.8	11.9	0.95	13.444 CC			
342.8	342.8	342.8	342.8	0.6	0.6	93.17	2.5	12.6	12.8	11.7	1.10	11.632			
400.0	400.0	400.0	400.0	0.7	0.7	95.02	2.5	12.6	12.8	11.5	1.30	9.868 ES, SF			
500.0	499.8	499.1	499.1	0.8	0.8	111.67	3.2	15.0	16.6	14.9	1.66	9.971			
600.0	599.3	597.4	597.0	1.1	1.0	124.35	5.4	22.3	28.2	26.1	2.06	13.697			
700.0	698.0	694.1	692.9	1.4	1.3	129.84	9.1	34.2	47.3	44.8	2.50	18.876			
800.0	795.8	788.5	785.8	1.7	1.6	131.99	14.0	50.2	73.3	70.3	3.03	24.213			
900.0	892.4	880.1	875.1	2.2	2.0	132.71	20.0	70.0	106.0	102.3	3.64	29.110			
1,000.0	987.5	968.5	960.1	2.8	2.4	132.75	27.0	92.9	144.9	140.5	4.34	33.365			
1,100.0	1,080.9	1,053.1	1,040.4	3.4	2.9	132.41	34.8	118.3	189.7	184.5	5.13	36.985			
1,200.0	1,172.2	1,133.7	1,115.8	4.2	3.4	131.81	43.2	145.7	240.0	234.0	5.98	40.107			
1,300.0	1,261.3	1,215.2	1,191.0	5.0	4.0	131.22	52.4	175.6	295.1	288.1	6.92	42.664			
1,400.0	1,347.9	1,296.3	1,265.9	5.9	4.6	130.97	61.5	205.6	353.1	345.2	7.89	44.752			
1,500.0	1,432.9	1,376.1	1,339.4	6.8	5.1	132.17	70.6	235.1	413.0	404.1	8.89	46.446			
1,600.0	1,517.9	1,455.8	1,413.0	7.7	5.7	133.20	79.6	264.5	473.0	463.1	9.90	47.767			
1,700.0	1,602.9	1,535.6	1,486.5	8.7	6.3	134.00	88.6	294.0	533.1	522.2	10.92	48.830			
1,800.0	1,687.8	1,615.3	1,560.1	9.6	6.9	134.64	97.6	323.4	593.2	581.3	11.94	49.703			
1,900.0	1,772.8	1,695.1	1,633.6	10.5	7.5	135.16	106.6	352.9	653.4	640.4	12.96	50.431			
2,000.0	1,857.8	1,774.8	1,707.2	11.5	8.0	135.60	115.6	382.4	713.6	699.6	13.98	51.047			
2,100.0	1,942.8	1,854.6	1,780.8	12.4	8.6	135.96	124.6	411.8	773.8	758.8	15.00	51.576			
2,200.0	2,027.8	1,934.3	1,854.3	13.3	9.2	136.28	133.7	441.3	834.0	818.0	16.03	52.034			
2,300.0	2,112.8	2,014.0	1,927.9	14.3	9.8	136.55	142.7	470.7	894.3	877.2	17.06	52.434			
2,400.0	2,197.7	2,093.8	2,001.4	15.2	10.4	136.78	151.7	500.2	954.6	936.5	18.08	52.787			
2,500.0	2,282.7	2,173.5	2,075.0	16.2	11.0	136.99	160.7	529.6	1,014.8	995.7	19.11	53.100			
2,600.0	2,367.7	2,253.3	2,148.5	17.1	11.6	137.18	169.7	559.1	1,075.1	1,055.0	20.14	53.380			
2,700.0	2,452.7	2,333.0	2,222.1	18.0	12.1	137.34	178.7	588.5	1,135.4	1,114.2	21.17	53.632			
2,800.0	2,537.7	2,412.8	2,295.6	19.0	12.7	137.49	187.7	618.0	1,195.7	1,173.5	22.20	53.860			
2,900.0	2,622.7	2,492.5	2,369.2	19.9	13.3	137.63	196.8	647.4	1,256.0	1,232.8	23.23	54.067			
3,000.0	2,707.9	2,572.4	2,442.9	20.8	13.9	138.34	205.8	677.0	1,316.0	1,291.8	24.28	54.196			

Cathedral Energy Services

Anticollision Report

Company:	Caerus Oil & Gas (NAD 27)	Local Co-ordinate Reference:	Well Nolte 43B-14
Project:	Garfield County, CO	TVD Reference:	WELL @ 5117.8ft (Original Well Elev)
Reference Site:	S14-T7S-R96W	MD Reference:	WELL @ 5117.8ft (Original Well Elev)
Site Error:	0.0ft	North Reference:	True
Reference Well:	Nolte 43B-14	Survey Calculation Method:	Minimum Curvature
Well Error:	0.0ft	Output errors are at	2.00 sigma
Reference Wellbore	DD	Database:	USA EDM 5000 Multi Users DB
Reference Design:	Plan #3	Offset TVD Reference:	Offset Datum

Offset Design S14-T7S-R96W - Nolte 14B-13 - DD - Plan #3												Offset Site Error:	0.0 ft
Survey Program: 0-MWD												Offset Well Error:	0.0 ft
Reference		Offset		Semi Major Axis			Distance					Warning	
Measured Depth (ft)	Vertical Depth (ft)	Measured Depth (ft)	Vertical Depth (ft)	Reference (ft)	Offset (ft)	Highside Toolface (°)	Offset Wellbore Centre +N/-S (ft)	+E/-W (ft)	Between Centres (ft)	Between Ellipses (ft)	Total Uncertainty Axis		Separation Factor
0.0	0.0	0.0	0.0	0.0	0.0	117.53	-4.6	8.9	10.0				
100.0	100.0	100.0	100.0	0.1	0.1	117.53	-4.6	8.9	10.0	9.7	0.25	39.255	
200.0	200.0	200.0	200.0	0.3	0.3	117.53	-4.6	8.9	10.0	9.4	0.60	16.563	
300.0	300.0	300.0	300.0	0.5	0.5	117.53	-4.6	8.9	10.0	9.0	0.95	10.496 CC	
329.4	329.4	329.4	329.4	0.5	0.5	131.21	-4.6	8.9	10.1	9.0	1.06	9.544 ES	
400.0	400.0	400.0	400.0	0.7	0.7	133.44	-4.6	8.9	10.4	9.1	1.30	8.018 SF	
500.0	499.8	499.8	499.8	0.8	0.8	148.51	-4.6	8.9	14.5	12.9	1.65	8.799	
600.0	599.3	598.9	598.9	1.1	1.0	160.23	-4.6	9.5	24.4	22.4	2.00	12.224	
700.0	698.0	696.5	696.3	1.4	1.2	161.49	-4.7	14.5	42.0	39.6	2.35	17.845	
800.0	795.8	791.8	791.1	1.7	1.4	159.59	-4.9	24.1	67.1	64.3	2.74	24.487	
900.0	892.4	884.0	882.3	2.2	1.6	157.29	-5.1	38.0	99.5	96.3	3.17	31.362	
1,000.0	987.5	972.5	969.0	2.8	1.9	155.18	-5.4	55.4	139.1	135.5	3.67	37.948	
1,100.0	1,080.9	1,056.6	1,050.6	3.4	2.3	153.30	-5.7	75.6	185.6	181.4	4.22	43.969	
1,200.0	1,172.2	1,135.9	1,126.7	4.2	2.7	151.60	-6.1	98.0	238.5	233.6	4.83	49.332	
1,300.0	1,261.3	1,210.1	1,197.0	5.0	3.1	149.99	-6.5	121.8	297.3	291.8	5.50	54.046	
1,400.0	1,347.9	1,279.1	1,261.5	5.9	3.6	148.40	-6.9	146.3	361.6	355.3	6.23	58.059	
1,500.0	1,432.9	1,344.6	1,321.9	6.8	4.0	147.99	-7.3	171.8	429.5	422.5	6.99	61.465	
1,600.0	1,517.9	1,417.3	1,388.5	7.7	4.5	147.65	-7.8	200.9	498.2	490.4	7.80	63.835	
1,700.0	1,602.9	1,490.0	1,455.1	8.7	5.1	147.39	-8.3	230.1	566.8	558.2	8.63	65.687	
1,800.0	1,687.8	1,562.7	1,521.6	9.6	5.6	147.19	-8.8	259.2	635.5	626.0	9.46	67.159	
1,900.0	1,772.8	1,635.3	1,588.2	10.5	6.2	147.02	-9.3	288.4	704.2	693.9	10.30	68.359	
2,000.0	1,857.8	1,708.0	1,654.8	11.5	6.7	146.89	-9.7	317.5	772.8	761.7	11.14	69.350	
2,100.0	1,942.8	1,780.7	1,721.4	12.4	7.3	146.78	-10.2	346.6	841.5	829.5	11.99	70.180	
2,200.0	2,027.8	1,853.4	1,788.0	13.3	7.8	146.68	-10.7	375.8	910.2	897.4	12.84	70.885	
2,300.0	2,112.8	1,926.1	1,854.5	14.3	8.4	146.60	-11.2	404.9	978.9	965.2	13.69	71.491	
2,400.0	2,197.7	1,998.8	1,921.1	15.2	8.9	146.53	-11.7	434.1	1,047.5	1,033.0	14.55	72.016	
2,500.0	2,282.7	2,071.4	1,987.7	16.2	9.5	146.47	-12.2	463.2	1,116.2	1,100.8	15.40	72.474	
2,600.0	2,367.7	2,144.1	2,054.3	17.1	10.0	146.41	-12.7	492.4	1,184.9	1,168.6	16.26	72.879	
2,700.0	2,452.7	2,216.8	2,120.9	18.0	10.6	146.36	-13.1	521.5	1,253.6	1,236.5	17.12	73.238	
2,800.0	2,537.7	2,289.5	2,187.4	19.0	11.1	146.32	-13.6	550.7	1,322.3	1,304.3	17.98	73.558	

Cathedral Energy Services

Anticollision Report

Company:	Caerus Oil & Gas (NAD 27)	Local Co-ordinate Reference:	Well Nolte 43B-14
Project:	Garfield County, CO	TVD Reference:	WELL @ 5117.8ft (Original Well Elev)
Reference Site:	S14-T7S-R96W	MD Reference:	WELL @ 5117.8ft (Original Well Elev)
Site Error:	0.0ft	North Reference:	True
Reference Well:	Nolte 43B-14	Survey Calculation Method:	Minimum Curvature
Well Error:	0.0ft	Output errors are at	2.00 sigma
Reference Wellbore	DD	Database:	USA EDM 5000 Multi Users DB
Reference Design:	Plan #3	Offset TVD Reference:	Offset Datum

Offset Design S14-T7S-R96W - Nolte 14C-13 - DD - Plan #3												Offset Site Error: 0.0 ft	
Survey Program: 0-MWD												Offset Well Error: 0.0 ft	
Reference		Offset		Semi Major Axis			Distance						Warning
Measured Depth (ft)	Vertical Depth (ft)	Measured Depth (ft)	Vertical Depth (ft)	Reference (ft)	Offset (ft)	Highside Toolface (°)	Offset Wellbore Centre +N/-S (ft)	+E/-W (ft)	Between Centres (ft)	Between Ellipses (ft)	Total Uncertainty Axis	Separation Factor	
0.0	0.0	0.0	0.0	0.0	0.0	154.97	-11.2	5.2	12.4				
100.0	100.0	100.0	100.0	0.1	0.1	154.97	-11.2	5.2	12.4	12.1	0.25	48.445	
200.0	200.0	200.0	200.0	0.3	0.3	154.97	-11.2	5.2	12.4	11.7	0.60	20.449	
300.0	300.0	300.0	300.0	0.5	0.5	154.97	-11.2	5.2	12.4	11.4	0.95	12.960 CC, ES	
327.9	327.9	327.9	327.9	0.5	0.5	168.26	-11.2	5.2	12.5	11.4	1.05	11.854	
400.0	400.0	400.0	400.0	0.7	0.7	168.76	-11.2	5.2	13.0	11.7	1.30	9.980 SF	
500.0	499.8	499.8	499.8	0.8	0.8	171.96	-11.2	5.2	18.2	16.5	1.65	11.014	
600.0	599.3	598.3	598.3	1.1	1.0	170.97	-12.0	7.6	30.2	28.2	1.99	15.139	
700.0	698.0	694.7	694.4	1.4	1.2	167.15	-14.4	14.6	50.7	48.3	2.35	21.614	
800.0	795.8	788.1	787.0	1.7	1.4	163.89	-18.3	25.7	79.7	77.0	2.72	29.329	
900.0	892.4	877.3	874.9	2.2	1.7	161.42	-23.3	40.3	117.0	113.9	3.12	37.515	
1,000.0	987.5	961.8	957.3	2.8	2.0	159.51	-29.3	57.7	162.0	158.5	3.55	45.666	
1,100.0	1,080.9	1,040.9	1,033.7	3.4	2.4	157.93	-36.0	77.1	214.3	210.3	4.01	53.483	
1,200.0	1,172.2	1,114.2	1,103.7	4.2	2.8	156.52	-43.1	97.8	273.3	268.8	4.49	60.803	
1,300.0	1,261.3	1,181.6	1,167.2	5.0	3.2	155.18	-50.5	119.0	338.3	333.3	5.02	67.426	
1,400.0	1,347.9	1,242.9	1,224.3	5.9	3.6	153.82	-57.8	140.1	408.8	403.2	5.58	73.293	
1,500.0	1,432.9	1,300.0	1,276.8	6.8	4.0	153.63	-65.1	161.3	482.9	476.7	6.17	78.328	
1,600.0	1,517.9	1,356.5	1,328.1	7.7	4.5	153.45	-72.8	183.7	558.5	551.8	6.78	82.399	
1,700.0	1,602.9	1,421.4	1,386.9	8.7	5.0	153.24	-81.8	209.8	634.6	627.1	7.43	85.416	
1,800.0	1,687.8	1,486.4	1,445.6	9.6	5.5	153.09	-90.8	235.9	710.6	702.5	8.09	87.887	
1,900.0	1,772.8	1,551.3	1,504.4	10.5	6.0	152.96	-99.8	262.0	786.6	777.9	8.75	89.929	
2,000.0	1,857.8	1,616.3	1,563.2	11.5	6.5	152.85	-108.9	288.1	862.6	853.2	9.41	91.654	
2,100.0	1,942.8	1,681.2	1,622.0	12.4	7.0	152.76	-117.9	314.3	938.7	928.6	10.08	93.116	
2,200.0	2,027.8	1,746.1	1,680.7	13.3	7.5	152.69	-126.9	340.4	1,014.7	1,004.0	10.75	94.372	
2,300.0	2,112.8	1,811.1	1,739.5	14.3	8.1	152.62	-135.9	366.5	1,090.8	1,079.3	11.43	95.466	
2,400.0	2,197.7	1,876.0	1,798.3	15.2	8.6	152.57	-144.9	392.6	1,166.8	1,154.7	12.10	96.420	
2,500.0	2,282.7	1,941.0	1,857.1	16.2	9.1	152.52	-153.9	418.7	1,242.8	1,230.0	12.78	97.262	
2,600.0	2,367.7	2,005.9	1,915.8	17.1	9.6	152.47	-162.9	444.8	1,318.9	1,305.4	13.46	98.011	

Cathedral Energy Services

Anticollision Report

Company:	Caerus Oil & Gas (NAD 27)	Local Co-ordinate Reference:	Well Nolte 43B-14
Project:	Garfield County, CO	TVD Reference:	WELL @ 5117.8ft (Original Well Elev)
Reference Site:	S14-T7S-R96W	MD Reference:	WELL @ 5117.8ft (Original Well Elev)
Site Error:	0.0ft	North Reference:	True
Reference Well:	Nolte 43B-14	Survey Calculation Method:	Minimum Curvature
Well Error:	0.0ft	Output errors are at	2.00 sigma
Reference Wellbore	DD	Database:	USA EDM 5000 Multi Users DB
Reference Design:	Plan #3	Offset TVD Reference:	Offset Datum

Offset Design S14-T7S-R96W - Nolte 14D-13 - DD - Plan #3												Offset Site Error:	0.0 ft
Survey Program: 0-MWD												Offset Well Error:	0.0 ft
Reference		Offset		Semi Major Axis			Distance						Warning
Measured Depth (ft)	Vertical Depth (ft)	Measured Depth (ft)	Vertical Depth (ft)	Reference (ft)	Offset (ft)	Highside Toolface (°)	Offset Wellbore Centre +N/-S (ft)	+E/-W (ft)	Between Centres (ft)	Between Ellipses (ft)	Total Uncertainty Axis	Separation Factor	
0.0	0.0	0.0	0.0	0.0	0.0	175.45	-18.8	1.5	18.9				
100.0	100.0	100.0	100.0	0.1	0.1	175.45	-18.8	1.5	18.9	18.6	0.26	73.958	
200.0	200.0	200.0	200.0	0.3	0.3	175.45	-18.8	1.5	18.9	18.3	0.60	31.230	
300.0	300.0	300.0	300.0	0.5	0.5	175.45	-18.8	1.5	18.9	17.9	0.95	19.794 CC, ES	
327.8	327.8	327.8	327.8	0.5	0.5	-171.40	-18.8	1.5	19.0	17.9	1.05	18.060	
400.0	400.0	400.0	400.0	0.7	0.7	-171.64	-18.8	1.5	19.5	18.2	1.30	14.989 SF	
500.0	499.8	498.9	498.9	0.8	0.8	-177.68	-20.2	3.6	26.4	24.8	1.65	16.026	
600.0	599.3	596.2	595.8	1.1	1.0	174.30	-24.3	9.9	42.6	40.6	2.00	21.319	
700.0	698.0	690.5	689.4	1.4	1.3	168.98	-30.8	20.0	68.2	65.9	2.35	29.015	
800.0	795.8	780.7	778.2	1.7	1.6	165.74	-39.4	33.2	103.0	100.2	2.71	37.934	
900.0	892.4	866.0	861.4	2.2	1.9	163.62	-49.6	48.9	146.1	143.1	3.09	47.367	
1,000.0	987.5	945.6	938.2	2.8	2.3	162.08	-60.9	66.4	197.2	193.7	3.47	56.893	
1,100.0	1,080.9	1,019.1	1,008.3	3.4	2.7	160.84	-72.9	85.0	255.4	251.5	3.85	66.252	
1,200.0	1,172.2	1,086.3	1,071.6	4.2	3.1	159.72	-85.2	103.8	320.1	315.8	4.26	75.173	
1,300.0	1,261.3	1,147.1	1,128.2	5.0	3.5	158.60	-97.3	122.5	390.6	385.9	4.68	83.426	
1,400.0	1,347.9	1,200.0	1,176.8	5.9	3.9	157.41	-108.7	140.0	466.3	461.2	5.12	91.024	
1,500.0	1,432.9	1,251.1	1,223.2	6.8	4.3	157.41	-120.3	158.0	545.4	539.8	5.61	97.221	
1,600.0	1,517.9	1,300.0	1,267.1	7.7	4.7	157.43	-132.1	176.1	625.8	619.7	6.10	102.610	
1,700.0	1,602.9	1,342.2	1,304.5	8.7	5.1	157.38	-142.8	192.6	707.5	700.9	6.59	107.424	
1,800.0	1,687.8	1,398.4	1,354.0	9.6	5.6	157.29	-157.2	214.9	789.7	782.6	7.11	111.021	
1,900.0	1,772.8	1,455.3	1,404.0	10.5	6.1	157.22	-171.9	237.5	872.0	864.4	7.65	114.021	
2,000.0	1,857.8	1,512.1	1,454.1	11.5	6.6	157.16	-186.5	260.1	954.3	946.1	8.18	116.618	
2,100.0	1,942.8	1,568.9	1,504.2	12.4	7.1	157.10	-201.2	282.6	1,036.6	1,027.8	8.72	118.842	
2,200.0	2,027.8	1,625.8	1,554.2	13.3	7.6	157.06	-215.8	305.2	1,118.8	1,109.6	9.26	120.789	
2,300.0	2,112.8	1,682.6	1,604.3	14.3	8.1	157.02	-230.5	327.8	1,201.1	1,191.3	9.81	122.497	
2,400.0	2,197.7	1,739.5	1,654.3	15.2	8.6	156.99	-245.1	350.4	1,283.4	1,273.0	10.35	124.004	

Cathedral Energy Services

Anticollision Report

Company:	Caerus Oil & Gas (NAD 27)	Local Co-ordinate Reference:	Well Nolte 43B-14
Project:	Garfield County, CO	TVD Reference:	WELL @ 5117.8ft (Original Well Elev)
Reference Site:	S14-T7S-R96W	MD Reference:	WELL @ 5117.8ft (Original Well Elev)
Site Error:	0.0ft	North Reference:	True
Reference Well:	Nolte 43B-14	Survey Calculation Method:	Minimum Curvature
Well Error:	0.0ft	Output errors are at	2.00 sigma
Reference Wellbore	DD	Database:	USA EDM 5000 Multi Users DB
Reference Design:	Plan #3	Offset TVD Reference:	Offset Datum

Offset Design S14-T7S-R96W - Nolte 43A-14 - DD - Plan #3													Offset Site Error:	0.0 ft
Survey Program: 0-MWD													Offset Well Error:	0.0 ft
Reference		Offset		Semi Major Axis		Highside Toolface (°)	Distance		Total Uncertainty Axis	Separation Factor	Warning			
Measured Depth (ft)	Vertical Depth (ft)	Measured Depth (ft)	Vertical Depth (ft)	Reference (ft)	Offset (ft)		Offset Wellbore Centre +N/-S (ft)	+E/-W (ft)						
0.0	0.0	0.0	0.0	0.0	0.0	27.57	7.1	3.7	8.0					
100.0	100.0	100.0	100.0	0.1	0.1	27.57	7.1	3.7	8.0	7.7	0.26	31.312		
200.0	200.0	200.0	200.0	0.3	0.3	27.57	7.1	3.7	8.0	7.4	0.60	13.228		
300.0	300.0	300.0	300.0	0.5	0.5	27.57	7.1	3.7	8.0	7.0	0.95	8.385 CC, ES		
400.0	400.0	399.6	399.6	0.7	0.7	33.60	9.6	3.2	9.6	8.3	1.30	7.374		
500.0	499.8	499.1	498.7	0.8	0.9	27.93	17.3	1.7	12.0	10.3	1.66	7.217		
600.0	599.3	598.4	597.2	1.1	1.1	24.91	29.9	-0.8	14.5	12.5	2.03	7.139		
700.0	698.0	697.6	694.8	1.4	1.5	23.43	47.6	-4.2	17.0	14.6	2.41	7.061		
800.0	795.8	796.7	791.1	1.7	1.9	22.90	70.1	-8.6	19.6	16.8	2.83	6.950		
900.0	892.4	895.7	886.0	2.2	2.4	22.98	97.5	-13.9	22.3	19.0	3.28	6.787		
1,000.0	987.5	994.5	979.3	2.8	3.0	23.49	129.7	-20.2	24.9	21.1	3.79	6.564		
1,100.0	1,080.9	1,093.2	1,070.6	3.4	3.7	24.29	166.4	-27.4	27.6	23.2	4.39	6.282		
1,200.0	1,172.2	1,191.8	1,159.7	4.2	4.5	25.31	207.7	-35.5	30.2	25.1	5.08	5.949		
1,300.0	1,261.3	1,290.3	1,246.5	5.0	5.3	26.48	253.5	-44.4	32.9	27.0	5.90	5.581		
1,400.0	1,347.9	1,388.6	1,330.6	5.9	6.2	27.77	303.4	-54.1	35.6	28.8	6.85	5.196		
1,500.0	1,432.9	1,486.8	1,411.9	6.8	7.2	27.75	357.5	-64.7	40.2	32.4	7.74	5.191 SF		
1,600.0	1,517.9	1,584.3	1,489.6	7.7	8.3	25.19	415.2	-75.9	49.4	41.2	8.20	6.024		
1,700.0	1,602.9	1,681.5	1,564.3	8.7	9.4	21.84	476.3	-87.8	63.1	54.8	8.37	7.543		
1,800.0	1,687.8	1,780.3	1,639.3	9.6	10.5	19.37	539.4	-100.2	78.2	69.6	8.59	9.103		
1,900.0	1,772.8	1,879.1	1,714.4	10.5	11.7	17.70	602.4	-112.5	93.4	84.5	8.90	10.497		
2,000.0	1,857.8	1,977.9	1,789.5	11.5	12.8	16.49	665.5	-124.8	108.6	99.4	9.25	11.745		
2,100.0	1,942.8	2,076.7	1,864.6	12.4	13.9	15.59	728.5	-137.1	123.9	114.2	9.63	12.866		
2,200.0	2,027.8	2,175.5	1,939.6	13.3	15.1	14.88	791.6	-149.4	139.2	129.1	10.03	13.877		
2,300.0	2,112.8	2,274.4	2,014.7	14.3	16.2	14.31	854.7	-161.7	154.5	144.0	10.44	14.793		
2,400.0	2,197.7	2,373.2	2,089.8	15.2	17.3	13.85	917.7	-174.0	169.8	158.9	10.86	15.626		
2,500.0	2,282.7	2,472.0	2,164.9	16.2	18.5	13.46	980.8	-186.3	185.1	173.8	11.29	16.388		
2,600.0	2,367.7	2,570.8	2,239.9	17.1	19.6	13.13	1,043.8	-198.6	200.4	188.7	11.73	17.086		
2,700.0	2,452.7	2,669.6	2,315.0	18.0	20.8	12.85	1,106.9	-210.9	215.8	203.6	12.17	17.728		
2,800.0	2,537.7	2,768.4	2,390.1	19.0	21.9	12.60	1,169.9	-223.2	231.1	218.5	12.61	18.321		
2,900.0	2,622.7	2,870.5	2,467.7	19.9	23.1	12.39	1,234.9	-235.9	246.3	233.2	13.07	18.847		
3,000.0	2,707.9	2,984.6	2,557.6	20.8	24.3	12.37	1,304.0	-249.3	257.8	244.2	13.63	18.916		
3,100.0	2,795.2	3,099.7	2,652.2	21.7	25.4	12.44	1,368.2	-261.9	267.7	253.5	14.21	18.845		
3,200.0	2,885.0	3,215.5	2,751.3	22.4	26.4	12.50	1,427.1	-273.4	276.7	262.0	14.74	18.778		
3,300.0	2,977.0	3,332.0	2,854.5	23.1	27.3	12.55	1,480.2	-283.7	284.9	269.7	15.23	18.712		
3,400.0	3,070.9	3,449.2	2,961.3	23.7	28.2	12.59	1,527.3	-292.9	292.2	276.5	15.67	18.645		
3,500.0	3,166.5	3,566.9	3,071.4	24.2	28.9	12.62	1,568.0	-300.9	298.5	282.4	16.07	18.575		
3,600.0	3,263.4	3,685.1	3,184.3	24.6	29.4	12.64	1,602.2	-307.5	303.9	287.5	16.43	18.501		
3,700.0	3,361.6	3,803.6	3,299.6	24.9	29.9	12.65	1,629.5	-312.9	308.3	291.6	16.74	18.421		
3,800.0	3,460.6	3,922.6	3,416.7	25.1	30.3	12.65	1,649.8	-316.8	311.7	294.7	17.00	18.334		
3,900.0	3,560.1	4,041.7	3,535.1	25.3	30.5	12.64	1,662.9	-319.4	314.0	296.8	17.22	18.238		
4,000.0	3,660.1	4,161.1	3,654.3	25.4	30.6	12.63	1,668.8	-320.5	315.4	298.0	17.40	18.129		
4,100.0	3,760.1	4,266.9	3,760.1	25.4	30.6	-0.57	1,669.1	-320.6	315.6	297.9	17.66	17.869		
4,200.0	3,860.1	4,366.9	3,860.1	25.5	30.7	-0.57	1,669.1	-320.6	315.6	297.6	17.95	17.583		
4,300.0	3,960.1	4,466.9	3,960.1	25.5	30.7	-0.57	1,669.1	-320.6	315.6	297.3	18.24	17.303		
4,400.0	4,060.1	4,566.9	4,060.1	25.6	30.7	-0.57	1,669.1	-320.6	315.6	297.0	18.53	17.030		
4,500.0	4,160.1	4,666.9	4,160.1	25.6	30.8	-0.57	1,669.1	-320.6	315.6	296.7	18.82	16.764		
4,600.0	4,260.1	4,766.9	4,260.1	25.7	30.8	-0.57	1,669.1	-320.6	315.6	296.4	19.12	16.505		
4,700.0	4,360.1	4,866.9	4,360.1	25.7	30.9	-0.57	1,669.1	-320.6	315.6	296.1	19.42	16.252		
4,800.0	4,460.1	4,966.9	4,460.1	25.8	30.9	-0.57	1,669.1	-320.6	315.6	295.8	19.72	16.005		
4,900.0	4,560.1	5,066.9	4,560.1	25.8	31.0	-0.57	1,669.1	-320.6	315.6	295.5	20.02	15.765		
5,000.0	4,660.1	5,166.9	4,660.1	25.9	31.0	-0.57	1,669.1	-320.6	315.6	295.2	20.32	15.530		
5,100.0	4,760.1	5,266.9	4,760.1	26.0	31.1	-0.57	1,669.1	-320.6	315.6	294.9	20.62	15.301		

CC - Min centre to center distance or convergent point, SF - min separation factor, ES - min ellipse separation

Cathedral Energy Services

Anticollision Report

Company:	Caerus Oil & Gas (NAD 27)	Local Co-ordinate Reference:	Well Nolte 43B-14
Project:	Garfield County, CO	TVD Reference:	WELL @ 5117.8ft (Original Well Elev)
Reference Site:	S14-T7S-R96W	MD Reference:	WELL @ 5117.8ft (Original Well Elev)
Site Error:	0.0ft	North Reference:	True
Reference Well:	Nolte 43B-14	Survey Calculation Method:	Minimum Curvature
Well Error:	0.0ft	Output errors are at	2.00 sigma
Reference Wellbore	DD	Database:	USA EDM 5000 Multi Users DB
Reference Design:	Plan #3	Offset TVD Reference:	Offset Datum

Offset Design S14-T7S-R96W - Nolte 43A-14 - DD - Plan #3													Offset Site Error:	0.0 ft
Survey Program: 0-MWD													Offset Well Error:	0.0 ft
Reference		Offset		Semi Major Axis			Distance						Warning	
Measured Depth (ft)	Vertical Depth (ft)	Measured Depth (ft)	Vertical Depth (ft)	Reference (ft)	Offset (ft)	Highside Toolface (°)	Offset Wellbore Centre +N/-S (ft)	+E/-W (ft)	Between Centres (ft)	Between Ellipses (ft)	Total Uncertainty Axis	Separation Factor		
5,200.0	4,860.1	5,366.9	4,860.1	26.0	31.1	-0.57	1,669.1	-320.6	315.6	294.6	20.93	15.078		
5,300.0	4,960.1	5,466.9	4,960.1	26.1	31.2	-0.57	1,669.1	-320.6	315.6	294.3	21.24	14.860		
5,400.0	5,060.1	5,566.9	5,060.1	26.1	31.2	-0.57	1,669.1	-320.6	315.6	294.0	21.54	14.648		
5,500.0	5,160.1	5,666.9	5,160.1	26.2	31.3	-0.57	1,669.1	-320.6	315.6	293.7	21.85	14.441		
5,600.0	5,260.1	5,766.9	5,260.1	26.3	31.4	-0.57	1,669.1	-320.6	315.6	293.4	22.16	14.238		
5,700.0	5,360.1	5,866.9	5,360.1	26.3	31.4	-0.57	1,669.1	-320.6	315.6	293.1	22.47	14.041		
5,800.0	5,460.1	5,966.9	5,460.1	26.4	31.5	-0.57	1,669.1	-320.6	315.6	292.8	22.79	13.848		
5,900.0	5,560.1	6,066.9	5,560.1	26.5	31.5	-0.57	1,669.1	-320.6	315.6	292.5	23.10	13.660		
6,000.0	5,660.1	6,166.9	5,660.1	26.5	31.6	-0.57	1,669.1	-320.6	315.6	292.1	23.42	13.477		
6,100.0	5,760.1	6,266.9	5,760.1	26.6	31.6	-0.57	1,669.1	-320.6	315.6	291.8	23.73	13.297		
6,200.0	5,860.1	6,366.9	5,860.1	26.7	31.7	-0.57	1,669.1	-320.6	315.6	291.5	24.05	13.122		
6,229.9	5,890.0	6,396.8	5,890.0	26.7	31.7	-0.57	1,669.1	-320.6	315.6	291.4	24.14	13.071		

Cathedral Energy Services

Anticollision Report

Company:	Caerus Oil & Gas (NAD 27)	Local Co-ordinate Reference:	Well Nolte 43B-14
Project:	Garfield County, CO	TVD Reference:	WELL @ 5117.8ft (Original Well Elev)
Reference Site:	S14-T7S-R96W	MD Reference:	WELL @ 5117.8ft (Original Well Elev)
Site Error:	0.0ft	North Reference:	True
Reference Well:	Nolte 43B-14	Survey Calculation Method:	Minimum Curvature
Well Error:	0.0ft	Output errors are at	2.00 sigma
Reference Wellbore	DD	Database:	USA EDM 5000 Multi Users DB
Reference Design:	Plan #3	Offset TVD Reference:	Offset Datum

Offset Design S14-T7S-R96W - Nolte 43C-14 - DD - Plan #3													Offset Site Error:	0.0 ft
Survey Program: 0-MWD													Offset Well Error:	0.0 ft
Reference		Offset		Semi Major Axis			Distance				Total Uncertainty Axis	Separation Factor	Warning	
Measured Depth (ft)	Vertical Depth (ft)	Measured Depth (ft)	Vertical Depth (ft)	Reference (ft)	Offset (ft)	Highside Toolface (°)	Offset Wellbore Centre +N/-S (ft)	+E/-W (ft)	Between Centres (ft)	Between Ellipses (ft)				
0.0	0.0	0.0	0.0	0.0	0.0	-152.62	-7.1	-3.7	8.0					
100.0	100.0	100.0	100.0	0.1	0.1	-152.62	-7.1	-3.7	8.0	7.7	0.26	31.243		
200.0	200.0	200.0	200.0	0.3	0.3	-152.62	-7.1	-3.7	8.0	7.4	0.60	13.207		
300.0	300.0	300.0	300.0	0.5	0.5	-152.62	-7.1	-3.7	8.0	7.0	0.95	8.373 CC		
329.1	329.1	329.1	329.1	0.5	0.5	-139.94	-7.1	-3.7	8.1	7.0	1.06	7.648 ES		
400.0	400.0	400.0	400.0	0.7	0.7	-142.29	-7.1	-3.7	8.5	7.2	1.30	6.520 SF		
500.0	499.8	500.3	500.3	0.8	0.8	-149.47	-4.6	-4.6	10.9	9.2	1.66	6.551		
600.0	599.3	600.8	600.5	1.1	1.0	-151.69	2.8	-7.3	13.6	11.6	2.03	6.723		
700.0	698.0	701.4	700.2	1.4	1.3	-151.22	15.2	-11.8	16.7	14.3	2.43	6.866		
800.0	795.8	802.1	799.2	1.7	1.6	-149.33	32.5	-18.1	20.1	17.2	2.91	6.904		
900.0	892.4	903.0	897.2	2.2	2.1	-146.70	54.8	-26.3	23.8	20.3	3.50	6.800		
1,000.0	987.5	1,003.9	993.9	2.8	2.6	-143.71	81.8	-36.2	27.9	23.7	4.26	6.563		
1,100.0	1,080.9	1,104.1	1,088.7	3.4	3.1	-142.24	112.3	-47.3	33.4	28.3	5.09	6.562		
1,200.0	1,172.2	1,203.6	1,182.8	4.2	3.7	-145.27	142.7	-58.4	42.9	37.2	5.72	7.491		
1,300.0	1,261.3	1,302.5	1,276.3	5.0	4.3	-149.94	173.0	-69.5	56.9	50.8	6.16	9.242		
1,400.0	1,347.9	1,400.5	1,369.0	5.9	4.8	-154.45	203.0	-80.4	75.8	69.3	6.46	11.731		
1,500.0	1,432.9	1,497.9	1,461.1	6.8	5.4	-158.01	232.8	-91.3	97.9	91.1	6.76	14.473		
1,600.0	1,517.9	1,595.3	1,553.1	7.7	6.0	-160.27	262.6	-102.2	120.1	113.0	7.12	16.871		
1,700.0	1,602.9	1,692.7	1,645.2	8.7	6.5	-161.83	292.4	-113.1	142.6	135.1	7.52	18.969		
1,800.0	1,687.8	1,790.1	1,737.3	9.6	7.1	-162.97	322.2	-123.9	165.1	157.1	7.93	20.815		
1,900.0	1,772.8	1,887.5	1,829.4	10.5	7.7	-163.83	352.0	-134.8	187.6	179.2	8.36	22.448		
2,000.0	1,857.8	1,984.9	1,921.5	11.5	8.3	-164.50	381.8	-145.7	210.2	201.4	8.79	23.902		
2,100.0	1,942.8	2,082.3	2,013.5	12.4	8.9	-165.05	411.6	-156.6	232.8	223.5	9.23	25.205		
2,200.0	2,027.8	2,179.7	2,105.6	13.3	9.4	-165.50	441.4	-167.5	255.4	245.7	9.68	26.378		
2,300.0	2,112.8	2,277.1	2,197.7	14.3	10.0	-165.88	471.2	-178.4	278.0	267.9	10.13	27.440		
2,400.0	2,197.7	2,374.5	2,289.8	15.2	10.6	-166.20	501.0	-189.2	300.6	290.0	10.58	28.405		
2,500.0	2,282.7	2,471.9	2,381.9	16.2	11.2	-166.47	530.8	-200.1	323.3	312.2	11.04	29.287		
2,600.0	2,367.7	2,569.3	2,474.0	17.1	11.8	-166.71	560.6	-211.0	345.9	334.4	11.49	30.095		
2,700.0	2,452.7	2,666.7	2,566.0	18.0	12.3	-166.92	590.4	-221.9	368.6	356.6	11.95	30.838		
2,800.0	2,537.7	2,764.0	2,658.1	19.0	12.9	-167.10	620.2	-232.8	391.2	378.8	12.41	31.524		
2,900.0	2,622.7	2,861.4	2,750.2	19.9	13.5	-167.27	650.0	-243.7	413.9	401.0	12.87	32.159		
3,000.0	2,707.9	2,958.9	2,842.4	20.8	14.1	-167.46	679.8	-254.6	436.1	422.8	13.35	32.680		
3,100.0	2,795.2	3,057.2	2,935.3	21.7	14.7	-167.59	709.9	-265.5	454.3	440.4	13.87	32.750		
3,200.0	2,885.0	3,155.2	3,027.9	22.4	15.2	-167.54	739.8	-276.5	467.4	452.9	14.43	32.381		
3,300.0	2,977.0	3,236.8	3,105.6	23.1	15.7	-167.45	763.2	-285.0	477.4	462.5	14.93	31.981		
3,400.0	3,070.9	3,317.2	3,183.1	23.7	16.0	-167.39	783.2	-292.3	486.4	471.0	15.37	31.638		
3,500.0	3,166.5	3,400.0	3,263.9	24.2	16.4	-167.35	800.6	-298.7	494.2	478.4	15.77	31.329		
3,600.0	3,263.4	3,477.5	3,340.1	24.6	16.6	-167.32	813.9	-303.5	500.8	484.7	16.11	31.090		
3,700.0	3,361.6	3,557.5	3,419.2	24.9	16.8	-167.31	824.5	-307.4	506.3	489.9	16.40	30.872		
3,800.0	3,460.6	3,637.3	3,498.7	25.1	16.9	-167.32	832.0	-310.2	510.7	494.0	16.64	30.683		
3,900.0	3,560.1	3,717.1	3,578.3	25.3	17.0	-167.34	836.4	-311.8	513.8	497.0	16.84	30.518		
4,000.0	3,660.1	3,798.9	3,660.1	25.4	17.1	-167.38	837.7	-312.2	515.8	498.8	16.99	30.366		
4,100.0	3,760.1	3,898.9	3,760.1	25.4	17.2	179.42	837.7	-312.2	515.9	498.7	17.24	29.918		
4,200.0	3,860.1	3,998.9	3,860.1	25.5	17.2	179.42	837.7	-312.2	515.9	498.4	17.53	29.437		
4,300.0	3,960.1	4,098.9	3,960.1	25.5	17.3	179.42	837.7	-312.2	515.9	498.1	17.81	28.967		
4,400.0	4,060.1	4,198.9	4,060.1	25.6	17.4	179.42	837.7	-312.2	515.9	497.8	18.10	28.508		
4,500.0	4,160.1	4,298.9	4,160.1	25.6	17.5	179.42	837.7	-312.2	515.9	497.5	18.39	28.061		
4,600.0	4,260.1	4,398.9	4,260.1	25.7	17.5	179.42	837.7	-312.2	515.9	497.2	18.68	27.624		
4,700.0	4,360.1	4,498.9	4,360.1	25.7	17.6	179.42	837.7	-312.2	515.9	496.9	18.97	27.198		
4,800.0	4,460.1	4,598.9	4,460.1	25.8	17.7	179.42	837.7	-312.2	515.9	496.7	19.26	26.782		
4,900.0	4,560.1	4,698.9	4,560.1	25.8	17.8	179.42	837.7	-312.2	515.9	496.4	19.56	26.376		
5,000.0	4,660.1	4,798.9	4,660.1	25.9	17.8	179.42	837.7	-312.2	515.9	496.1	19.86	25.980		

CC - Min centre to center distance or convergent point, SF - min separation factor, ES - min ellipse separation

Cathedral Energy Services

Anticollision Report

Company:	Caerus Oil & Gas (NAD 27)	Local Co-ordinate Reference:	Well Nolte 43B-14
Project:	Garfield County, CO	TVD Reference:	WELL @ 5117.8ft (Original Well Elev)
Reference Site:	S14-T7S-R96W	MD Reference:	WELL @ 5117.8ft (Original Well Elev)
Site Error:	0.0ft	North Reference:	True
Reference Well:	Nolte 43B-14	Survey Calculation Method:	Minimum Curvature
Well Error:	0.0ft	Output errors are at	2.00 sigma
Reference Wellbore	DD	Database:	USA EDM 5000 Multi Users DB
Reference Design:	Plan #3	Offset TVD Reference:	Offset Datum

Offset Design S14-T7S-R96W - Nolte 43C-14 - DD - Plan #3													Offset Site Error: 0.0 ft	
Survey Program: 0-MWD													Offset Well Error: 0.0 ft	
Reference		Offset		Semi Major Axis			Distance							Warning
Measured Depth (ft)	Vertical Depth (ft)	Measured Depth (ft)	Vertical Depth (ft)	Reference (ft)	Offset (ft)	Highside Toolface (°)	Offset Wellbore Centre +N/-S (ft)	+E/-W (ft)	Between Centres (ft)	Between Ellipses (ft)	Total Uncertainty Axis	Separation Factor		
5,100.0	4,760.1	4,898.9	4,760.1	26.0	17.9	179.42	837.7	-312.2	515.9	495.8	20.16	25.594		
5,200.0	4,860.1	4,998.9	4,860.1	26.0	18.0	179.42	837.7	-312.2	515.9	495.5	20.46	25.217		
5,300.0	4,960.1	5,098.9	4,960.1	26.1	18.1	179.42	837.7	-312.2	515.9	495.2	20.76	24.849		
5,400.0	5,060.1	5,198.9	5,060.1	26.1	18.2	179.42	837.7	-312.2	515.9	494.9	21.07	24.490		
5,500.0	5,160.1	5,298.9	5,160.1	26.2	18.3	179.42	837.7	-312.2	515.9	494.5	21.37	24.140		
5,600.0	5,260.1	5,398.9	5,260.1	26.3	18.4	179.42	837.7	-312.2	515.9	494.2	21.68	23.798		
5,700.0	5,360.1	5,498.9	5,360.1	26.3	18.4	179.42	837.7	-312.2	515.9	493.9	21.99	23.464		
5,800.0	5,460.1	5,598.9	5,460.1	26.4	18.5	179.42	837.7	-312.2	515.9	493.6	22.30	23.139		
5,900.0	5,560.1	5,698.9	5,560.1	26.5	18.6	179.42	837.7	-312.2	515.9	493.3	22.61	22.821		
6,000.0	5,660.1	5,798.9	5,660.1	26.5	18.7	179.42	837.7	-312.2	515.9	493.0	22.92	22.511		
6,100.0	5,760.1	5,898.9	5,760.1	26.6	18.8	179.42	837.7	-312.2	515.9	492.7	23.23	22.208		
6,162.9	5,823.0	5,961.8	5,823.0	26.6	18.9	179.42	837.7	-312.2	515.9	492.5	23.43	22.021		
6,200.0	5,860.1	5,988.8	5,850.0	26.7	18.9	179.42	837.7	-312.2	516.0	492.5	23.53	21.931		
6,229.9	5,890.0	5,988.8	5,850.0	26.7	18.9	179.42	837.7	-312.2	517.5	493.9	23.58	21.948		

Cathedral Energy Services

Anticollision Report

Company:	Caerus Oil & Gas (NAD 27)	Local Co-ordinate Reference:	Well Nolte 43B-14
Project:	Garfield County, CO	TVD Reference:	WELL @ 5117.8ft (Original Well Elev)
Reference Site:	S14-T7S-R96W	MD Reference:	WELL @ 5117.8ft (Original Well Elev)
Site Error:	0.0ft	North Reference:	True
Reference Well:	Nolte 43B-14	Survey Calculation Method:	Minimum Curvature
Well Error:	0.0ft	Output errors are at	2.00 sigma
Reference Wellbore	DD	Database:	USA EDM 5000 Multi Users DB
Reference Design:	Plan #3	Offset TVD Reference:	Offset Datum

Offset Design S14-T7S-R96W - Nolte 44A-14 - DD - Plan #3													Offset Site Error: 0.0 ft	
Survey Program: 0-MWD													Offset Well Error: 0.0 ft	
Reference		Offset		Semi Major Axis			Distance							Warning
Measured Depth (ft)	Vertical Depth (ft)	Measured Depth (ft)	Vertical Depth (ft)	Reference (ft)	Offset (ft)	Highside Toolface (°)	Offset Wellbore Centre +N/-S (ft)	+E/-W (ft)	Between Centres (ft)	Between Ellipses (ft)	Total Uncertainty Axis	Separation Factor		
0.0	0.0	0.0	0.0	0.0	0.0	-152.53	-14.2	-7.4	16.0					
100.0	100.0	100.0	100.0	0.1	0.1	-152.53	-14.2	-7.4	16.0	15.7	0.26	62.481		
200.0	200.0	200.0	200.0	0.3	0.3	-152.53	-14.2	-7.4	16.0	15.4	0.60	26.425		
300.0	300.0	300.0	300.0	0.5	0.5	-152.53	-14.2	-7.4	16.0	15.0	0.95	16.756 CC		
328.5	328.5	328.5	328.5	0.5	0.5	-139.58	-14.2	-7.4	16.1	15.0	1.05	15.251 ES		
400.0	400.0	400.0	400.0	0.7	0.7	-140.81	-14.2	-7.4	16.5	15.2	1.30	12.653		
500.0	499.8	500.1	500.1	0.8	0.8	-149.03	-13.8	-7.6	20.5	18.9	1.65	12.397 SF		
600.0	599.3	600.4	600.4	1.1	1.0	-154.92	-10.7	-9.3	27.2	25.2	2.01	13.552		
700.0	698.0	700.9	700.5	1.4	1.2	-158.07	-4.6	-12.7	36.2	33.9	2.38	15.258		
800.0	795.8	801.4	800.5	1.7	1.4	-159.60	4.6	-17.9	47.4	44.6	2.76	17.189		
900.0	892.4	902.1	900.2	2.2	1.7	-160.22	16.8	-24.8	60.6	57.5	3.16	19.164		
1,000.0	987.5	1,002.8	999.4	2.8	2.0	-160.34	32.2	-33.4	75.9	72.3	3.60	21.061		
1,100.0	1,080.9	1,103.7	1,098.1	3.4	2.4	-160.19	50.6	-43.8	93.2	89.1	4.09	22.802		
1,200.0	1,172.2	1,204.8	1,196.1	4.2	2.8	-159.88	72.0	-55.8	112.5	107.9	4.62	24.338		
1,300.0	1,261.3	1,306.1	1,293.4	5.0	3.3	-159.49	96.5	-69.6	133.8	128.6	5.22	25.648		
1,400.0	1,347.9	1,407.0	1,389.3	5.9	3.9	-159.06	123.8	-84.9	157.1	151.2	5.87	26.759		
1,500.0	1,432.9	1,503.8	1,480.9	6.8	4.4	-159.02	151.2	-100.3	182.2	175.6	6.55	27.806		
1,600.0	1,517.9	1,600.6	1,572.4	7.7	5.0	-159.01	178.5	-115.7	207.3	200.0	7.24	28.609		
1,700.0	1,602.9	1,697.4	1,664.0	8.7	5.5	-159.01	205.9	-131.0	232.3	224.4	7.94	29.245		
1,800.0	1,687.8	1,794.2	1,755.6	9.6	6.1	-159.00	233.2	-146.4	257.4	248.8	8.65	29.759		
1,900.0	1,772.8	1,891.0	1,847.2	10.5	6.7	-159.00	260.6	-161.8	282.5	273.1	9.36	30.182		
2,000.0	1,857.8	1,987.8	1,938.8	11.5	7.2	-159.00	287.9	-177.1	307.6	297.5	10.07	30.535		
2,100.0	1,942.8	2,084.6	2,030.3	12.4	7.8	-158.99	315.3	-192.5	332.7	321.9	10.79	30.834		
2,200.0	2,027.8	2,181.4	2,121.9	13.3	8.4	-158.99	342.6	-207.9	357.7	346.2	11.51	31.090		
2,300.0	2,112.8	2,278.2	2,213.5	14.3	9.0	-158.99	370.0	-223.2	382.8	370.6	12.23	31.311		
2,400.0	2,197.7	2,371.3	2,301.7	15.2	9.5	-159.00	396.1	-237.9	408.1	395.1	12.92	31.571		
2,500.0	2,282.7	2,457.3	2,383.7	16.2	9.9	-159.18	418.6	-250.5	435.2	421.7	13.53	32.176		
2,600.0	2,367.7	2,542.0	2,465.2	17.1	10.3	-159.52	438.6	-261.8	464.6	450.6	14.04	33.087		
2,700.0	2,452.7	2,625.2	2,546.0	18.0	10.7	-160.00	456.2	-271.7	496.4	481.9	14.48	34.272		
2,800.0	2,537.7	2,707.0	2,625.8	19.0	11.0	-160.57	471.4	-280.2	530.5	515.6	14.86	35.705		
2,900.0	2,622.7	2,787.2	2,704.6	19.9	11.3	-161.20	484.5	-287.6	566.8	551.6	15.17	37.373		
3,000.0	2,707.9	2,865.8	2,782.2	20.8	11.5	-162.02	495.4	-293.7	605.0	589.6	15.41	39.265		
3,100.0	2,795.2	2,944.2	2,859.9	21.7	11.7	-162.97	504.4	-298.8	641.6	626.0	15.60	41.123		
3,200.0	2,885.0	3,022.6	2,937.8	22.4	11.9	-163.80	511.6	-302.8	675.7	659.9	15.78	42.820		
3,300.0	2,977.0	3,100.0	3,015.0	23.1	12.0	-164.53	516.9	-305.8	707.4	691.4	15.94	44.372		
3,400.0	3,070.9	3,179.4	3,094.3	23.7	12.1	-165.19	520.4	-307.8	736.5	720.5	16.08	45.813		
3,500.0	3,166.5	3,257.8	3,172.8	24.2	12.2	-165.78	522.0	-308.7	763.1	746.9	16.19	47.135		
3,600.0	3,263.4	3,348.5	3,263.4	24.6	12.3	-166.35	522.1	-308.7	786.7	770.4	16.29	48.288		
3,700.0	3,361.6	3,446.7	3,361.6	24.9	12.4	-166.81	522.1	-308.7	805.4	789.0	16.42	49.063		
3,800.0	3,460.6	3,545.6	3,460.6	25.1	12.5	-167.13	522.1	-308.7	819.1	802.6	16.56	49.456		
3,900.0	3,560.1	3,645.2	3,560.1	25.3	12.5	-167.32	522.1	-308.7	827.8	811.1	16.73	49.491		
4,000.0	3,660.1	3,745.2	3,660.1	25.4	12.6	-167.40	522.1	-308.7	831.4	814.5	16.90	49.188		
4,100.0	3,760.1	3,845.2	3,760.1	25.4	12.7	179.40	522.1	-308.7	831.5	814.3	17.16	48.447		
4,200.0	3,860.1	3,945.2	3,860.1	25.5	12.8	179.40	522.1	-308.7	831.5	814.0	17.44	47.666		
4,300.0	3,960.1	4,045.2	3,960.1	25.5	12.9	179.40	522.1	-308.7	831.5	813.8	17.73	46.903		
4,400.0	4,060.1	4,145.2	4,060.1	25.6	13.0	179.40	522.1	-308.7	831.5	813.5	18.01	46.158		
4,500.0	4,160.1	4,245.2	4,160.1	25.6	13.1	179.40	522.1	-308.7	831.5	813.2	18.30	45.431		
4,600.0	4,260.1	4,345.2	4,260.1	25.7	13.2	179.40	522.1	-308.7	831.5	812.9	18.59	44.722		
4,700.0	4,360.1	4,445.2	4,360.1	25.7	13.3	179.40	522.1	-308.7	831.5	812.6	18.88	44.030		
4,800.0	4,460.1	4,545.2	4,460.1	25.8	13.4	179.40	522.1	-308.7	831.5	812.3	19.18	43.354		
4,900.0	4,560.1	4,645.2	4,560.1	25.8	13.5	179.40	522.1	-308.7	831.5	812.0	19.47	42.695		
5,000.0	4,660.1	4,745.2	4,660.1	25.9	13.6	179.40	522.1	-308.7	831.5	811.7	19.77	42.052		

CC - Min centre to center distance or convergent point, SF - min separation factor, ES - min ellipse separation

Cathedral Energy Services

Anticollision Report

Company:	Caerus Oil & Gas (NAD 27)	Local Co-ordinate Reference:	Well Nolte 43B-14
Project:	Garfield County, CO	TVD Reference:	WELL @ 5117.8ft (Original Well Elev)
Reference Site:	S14-T7S-R96W	MD Reference:	WELL @ 5117.8ft (Original Well Elev)
Site Error:	0.0ft	North Reference:	True
Reference Well:	Nolte 43B-14	Survey Calculation Method:	Minimum Curvature
Well Error:	0.0ft	Output errors are at	2.00 sigma
Reference Wellbore	DD	Database:	USA EDM 5000 Multi Users DB
Reference Design:	Plan #3	Offset TVD Reference:	Offset Datum

Offset Design S14-T7S-R96W - Nolte 44A-14 - DD - Plan #3													Offset Site Error:	0.0 ft
Survey Program: 0-MWD													Offset Well Error:	0.0 ft
Reference		Offset		Semi Major Axis			Distance						Warning	
Measured Depth (ft)	Vertical Depth (ft)	Measured Depth (ft)	Vertical Depth (ft)	Reference (ft)	Offset (ft)	Highside Toolface (°)	Offset Wellbore Centre +N/-S (ft)	+E/-W (ft)	Between Centres (ft)	Between Ellipses (ft)	Total Uncertainty Axis	Separation Factor		
5,100.0	4,760.1	4,845.2	4,760.1	26.0	13.7	179.40	522.1	-308.7	831.5	811.4	20.07	41.425		
5,200.0	4,860.1	4,945.2	4,860.1	26.0	13.8	179.40	522.1	-308.7	831.5	811.1	20.37	40.813		
5,300.0	4,960.1	5,045.2	4,960.1	26.1	13.9	179.40	522.1	-308.7	831.5	810.8	20.68	40.216		
5,400.0	5,060.1	5,145.2	5,060.1	26.1	14.0	179.40	522.1	-308.7	831.5	810.5	20.98	39.633		
5,500.0	5,160.1	5,245.2	5,160.1	26.2	14.2	179.40	522.1	-308.7	831.5	810.2	21.28	39.065		
5,600.0	5,260.1	5,345.2	5,260.1	26.3	14.3	179.40	522.1	-308.7	831.5	809.9	21.59	38.510		
5,700.0	5,360.1	5,445.2	5,360.1	26.3	14.4	179.40	522.1	-308.7	831.5	809.6	21.90	37.969		
5,800.0	5,460.1	5,545.2	5,460.1	26.4	14.5	179.40	522.1	-308.7	831.5	809.3	22.21	37.440		
5,900.0	5,560.1	5,645.2	5,560.1	26.5	14.6	179.40	522.1	-308.7	831.5	809.0	22.52	36.924		
6,000.0	5,660.1	5,745.2	5,660.1	26.5	14.7	179.40	522.1	-308.7	831.5	808.7	22.83	36.421		
6,100.0	5,760.1	5,845.2	5,760.1	26.6	14.8	179.40	522.1	-308.7	831.5	808.3	23.14	35.929		
6,158.3	5,818.4	5,903.5	5,818.4	26.6	14.9	179.40	522.1	-308.7	831.5	808.2	23.33	35.647		
6,200.0	5,860.1	5,925.1	5,840.0	26.7	14.9	179.40	522.1	-308.7	831.7	808.3	23.42	35.506		
6,229.9	5,890.0	5,925.1	5,840.0	26.7	14.9	179.40	522.1	-308.7	833.0	809.5	23.47	35.488		

Cathedral Energy Services

Anticollision Report

Company:	Caerus Oil & Gas (NAD 27)	Local Co-ordinate Reference:	Well Nolte 43B-14
Project:	Garfield County, CO	TVD Reference:	WELL @ 5117.8ft (Original Well Elev)
Reference Site:	S14-T7S-R96W	MD Reference:	WELL @ 5117.8ft (Original Well Elev)
Site Error:	0.0ft	North Reference:	True
Reference Well:	Nolte 43B-14	Survey Calculation Method:	Minimum Curvature
Well Error:	0.0ft	Output errors are at	2.00 sigma
Reference Wellbore	DD	Database:	USA EDM 5000 Multi Users DB
Reference Design:	Plan #3	Offset TVD Reference:	Offset Datum

Offset Design S14-T7S-R96W - Nolte 44B-14 - DD - Plan #3													Offset Site Error: 0.0 ft	
Survey Program: 0-MWD													Offset Well Error: 0.0 ft	
Reference		Offset		Semi Major Axis			Distance							Warning
Measured Depth (ft)	Vertical Depth (ft)	Measured Depth (ft)	Vertical Depth (ft)	Reference (ft)	Offset (ft)	Highside Toolface (°)	Offset Wellbore Centre +N/-S (ft)	+E/-W (ft)	Between Centres (ft)	Between Ellipses (ft)	Total Uncertainty Axis	Separation Factor		
0.0	0.0	0.0	0.0	0.0	0.0	-152.51	-21.3	-11.1	24.0					
100.0	100.0	100.0	100.0	0.1	0.1	-152.51	-21.3	-11.1	24.0	23.7	0.26	93.712		
200.0	200.0	200.0	200.0	0.3	0.3	-152.51	-21.3	-11.1	24.0	23.4	0.61	39.646		
300.0	300.0	300.0	300.0	0.5	0.5	-152.51	-21.3	-11.1	24.0	23.0	0.95	25.141 CC		
328.3	328.3	328.3	328.3	0.5	0.5	-139.47	-21.3	-11.1	24.1	23.0	1.05	22.860 ES		
400.0	400.0	400.0	400.0	0.7	0.7	-140.30	-21.3	-11.1	24.5	23.2	1.30	18.791		
500.0	499.8	499.8	499.8	0.8	0.8	-146.91	-21.3	-11.1	28.7	27.1	1.65	17.353 SF		
600.0	599.3	599.8	599.8	1.1	1.0	-151.66	-20.0	-13.3	37.2	35.1	2.01	18.447		
700.0	698.0	699.7	699.3	1.4	1.2	-151.33	-16.1	-20.1	49.0	46.6	2.41	20.308		
800.0	795.8	798.6	797.6	1.7	1.4	-150.13	-10.5	-30.0	64.4	61.6	2.86	22.566		
900.0	892.4	896.6	894.9	2.2	1.7	-150.98	-4.9	-39.9	84.4	81.1	3.32	25.421		
1,000.0	987.5	993.5	991.2	2.8	1.9	-152.67	0.7	-49.6	108.8	105.1	3.78	28.758		
1,100.0	1,080.9	1,089.0	1,086.1	3.4	2.1	-154.56	6.2	-59.2	137.9	133.7	4.24	32.506		
1,200.0	1,172.2	1,183.0	1,179.4	4.2	2.4	-156.35	11.6	-68.7	171.7	167.0	4.69	36.610		
1,300.0	1,261.3	1,275.0	1,270.8	5.0	2.6	-157.95	16.8	-78.0	210.2	205.1	5.12	41.021		
1,400.0	1,347.9	1,365.0	1,360.2	5.9	2.8	-159.32	22.0	-87.0	253.3	247.8	5.54	45.694		
1,500.0	1,432.9	1,453.6	1,448.1	6.8	3.1	-160.84	27.1	-95.9	299.2	293.3	5.97	50.090		
1,600.0	1,517.9	1,542.1	1,536.1	7.7	3.3	-161.99	32.2	-104.9	345.3	338.9	6.41	53.877		
1,700.0	1,602.9	1,630.7	1,624.1	8.7	3.5	-162.87	37.3	-113.8	391.5	384.6	6.85	57.183		
1,800.0	1,687.8	1,719.3	1,712.0	9.6	3.8	-163.57	42.3	-122.7	437.7	430.4	7.28	60.092		
1,900.0	1,772.8	1,807.8	1,800.0	10.5	4.0	-164.13	47.4	-131.6	483.9	476.2	7.72	62.669		
2,000.0	1,857.8	1,896.4	1,888.0	11.5	4.2	-164.60	52.5	-140.5	530.2	522.1	8.16	64.969		
2,100.0	1,942.8	1,985.0	1,976.0	12.4	4.5	-164.99	57.6	-149.4	576.5	567.9	8.60	67.032		
2,200.0	2,027.8	2,073.5	2,063.9	13.3	4.7	-165.32	62.7	-158.4	622.9	613.8	9.04	68.894		
2,300.0	2,112.8	2,162.1	2,151.9	14.3	4.9	-165.61	67.8	-167.3	669.2	659.7	9.48	70.582		
2,400.0	2,197.7	2,250.7	2,239.9	15.2	5.2	-165.86	72.8	-176.2	715.6	705.6	9.92	72.120		
2,500.0	2,282.7	2,339.2	2,327.8	16.2	5.4	-166.08	77.9	-185.1	761.9	751.6	10.36	73.526		
2,600.0	2,367.7	2,427.8	2,415.8	17.1	5.6	-166.27	83.0	-194.0	808.3	797.5	10.80	74.817		
2,700.0	2,452.7	2,516.4	2,503.8	18.0	5.9	-166.44	88.1	-203.0	854.7	843.4	11.24	76.007		
2,800.0	2,537.7	2,604.9	2,591.7	19.0	6.1	-166.60	93.2	-211.9	901.1	889.4	11.69	77.106		
2,900.0	2,622.7	2,693.5	2,679.7	19.9	6.4	-166.74	98.3	-220.8	947.4	935.3	12.13	78.125		
3,000.0	2,707.9	2,782.3	2,767.9	20.8	6.6	-167.00	103.4	-229.7	993.5	980.9	12.59	78.934		
3,100.0	2,795.2	2,872.9	2,857.9	21.7	6.8	-167.36	108.6	-238.9	1,035.7	1,022.7	13.07	79.222		
3,200.0	2,885.0	2,965.5	2,949.9	22.4	7.1	-167.61	113.9	-248.2	1,073.3	1,059.7	13.57	79.102		
3,300.0	2,977.0	3,060.0	3,043.7	23.1	7.3	-167.75	119.3	-257.7	1,106.1	1,092.0	14.07	78.629		
3,400.0	3,070.9	3,156.0	3,139.1	23.7	7.6	-167.80	124.8	-267.4	1,134.0	1,119.5	14.57	77.848		
3,500.0	3,166.5	3,253.2	3,235.6	24.2	7.8	-167.76	130.4	-277.2	1,157.0	1,141.9	15.07	76.797		
3,600.0	3,263.4	3,351.5	3,333.2	24.6	8.1	-167.64	136.0	-287.0	1,175.0	1,159.4	15.56	75.508		
3,700.0	3,361.6	3,443.7	3,424.8	24.9	8.3	-167.47	141.3	-296.2	1,188.0	1,172.0	16.02	74.162		
3,800.0	3,460.6	3,519.2	3,500.1	25.1	8.5	-167.38	144.4	-301.8	1,197.5	1,181.2	16.35	73.239		
3,900.0	3,560.1	3,600.0	3,580.8	25.3	8.6	-167.35	146.2	-304.9	1,203.9	1,187.3	16.61	72.485		
4,000.0	3,660.1	3,679.3	3,660.1	25.4	8.7	-167.37	146.5	-305.4	1,207.0	1,190.2	16.80	71.866		
4,100.0	3,760.1	3,779.3	3,760.1	25.4	8.9	179.43	146.5	-305.4	1,207.1	1,190.1	17.06	70.761		
4,200.0	3,860.1	3,879.3	3,860.1	25.5	9.0	179.43	146.5	-305.4	1,207.1	1,189.8	17.34	69.616		
4,300.0	3,960.1	3,979.3	3,960.1	25.5	9.1	179.43	146.5	-305.4	1,207.1	1,189.5	17.62	68.498		
4,400.0	4,060.1	4,079.3	4,060.1	25.6	9.2	179.43	146.5	-305.4	1,207.1	1,189.2	17.91	67.406		
4,500.0	4,160.1	4,179.3	4,160.1	25.6	9.4	179.43	146.5	-305.4	1,207.1	1,188.9	18.20	66.340		
4,600.0	4,260.1	4,279.3	4,260.1	25.7	9.5	179.43	146.5	-305.4	1,207.1	1,188.7	18.49	65.301		
4,700.0	4,360.1	4,379.3	4,360.1	25.7	9.7	179.43	146.5	-305.4	1,207.1	1,188.4	18.78	64.286		
4,800.0	4,460.1	4,479.3	4,460.1	25.8	9.8	179.43	146.5	-305.4	1,207.1	1,188.1	19.07	63.296		
4,900.0	4,560.1	4,579.3	4,560.1	25.8	9.9	179.43	146.5	-305.4	1,207.1	1,187.8	19.37	62.330		
5,000.0	4,660.1	4,679.3	4,660.1	25.9	10.1	179.43	146.5	-305.4	1,207.1	1,187.5	19.66	61.388		

CC - Min centre to center distance or convergent point, SF - min separation factor, ES - min ellipse separation

Cathedral Energy Services

Anticollision Report

Company:	Caerus Oil & Gas (NAD 27)	Local Co-ordinate Reference:	Well Nolte 43B-14
Project:	Garfield County, CO	TVD Reference:	WELL @ 5117.8ft (Original Well Elev)
Reference Site:	S14-T7S-R96W	MD Reference:	WELL @ 5117.8ft (Original Well Elev)
Site Error:	0.0ft	North Reference:	True
Reference Well:	Nolte 43B-14	Survey Calculation Method:	Minimum Curvature
Well Error:	0.0ft	Output errors are at	2.00 sigma
Reference Wellbore	DD	Database:	USA EDM 5000 Multi Users DB
Reference Design:	Plan #3	Offset TVD Reference:	Offset Datum

Offset Design S14-T7S-R96W - Nolte 44B-14 - DD - Plan #3													Offset Site Error:	0.0 ft
Survey Program: 0-MWD													Offset Well Error:	0.0 ft
Reference		Offset		Semi Major Axis			Distance						Warning	
Measured Depth (ft)	Vertical Depth (ft)	Measured Depth (ft)	Vertical Depth (ft)	Reference (ft)	Offset (ft)	Highside Toolface (°)	Offset Wellbore Centre +N/-S (ft)	+E/-W (ft)	Between Centres (ft)	Between Ellipses (ft)	Total Uncertainty Axis	Separation Factor		
5,100.0	4,760.1	4,779.3	4,760.1	26.0	10.2	179.43	146.5	-305.4	1,207.1	1,187.2	19.96	60.468		
5,200.0	4,860.1	4,879.3	4,860.1	26.0	10.4	179.43	146.5	-305.4	1,207.1	1,186.9	20.26	59.571		
5,300.0	4,960.1	4,979.3	4,960.1	26.1	10.5	179.43	146.5	-305.4	1,207.1	1,186.6	20.57	58.696		
5,400.0	5,060.1	5,079.3	5,060.1	26.1	10.6	179.43	146.5	-305.4	1,207.1	1,186.3	20.87	57.842		
5,500.0	5,160.1	5,179.3	5,160.1	26.2	10.8	179.43	146.5	-305.4	1,207.1	1,186.0	21.17	57.009		
5,600.0	5,260.1	5,279.3	5,260.1	26.3	10.9	179.43	146.5	-305.4	1,207.1	1,185.7	21.48	56.196		
5,700.0	5,360.1	5,379.3	5,360.1	26.3	11.1	179.43	146.5	-305.4	1,207.1	1,185.3	21.79	55.403		
5,800.0	5,460.1	5,479.3	5,460.1	26.4	11.2	179.43	146.5	-305.4	1,207.1	1,185.0	22.10	54.628		
5,900.0	5,560.1	5,579.3	5,560.1	26.5	11.4	179.43	146.5	-305.4	1,207.1	1,184.7	22.41	53.872		
6,000.0	5,660.1	5,679.3	5,660.1	26.5	11.5	179.43	146.5	-305.4	1,207.1	1,184.4	22.72	53.135		
6,100.0	5,760.1	5,779.3	5,760.1	26.6	11.7	179.43	146.5	-305.4	1,207.1	1,184.1	23.03	52.414		
6,139.3	5,799.4	5,818.6	5,799.4	26.6	11.7	179.43	146.5	-305.4	1,207.1	1,184.0	23.15	52.136		
6,200.0	5,860.1	5,834.2	5,815.0	26.7	11.8	179.43	146.5	-305.4	1,208.0	1,184.7	23.27	51.903		
6,229.9	5,890.0	5,834.2	5,815.0	26.7	11.8	179.43	146.5	-305.4	1,209.5	1,186.1	23.32	51.861		

Cathedral Energy Services

Anticollision Report

Company:	Caerus Oil & Gas (NAD 27)	Local Co-ordinate Reference:	Well Nolte 43B-14
Project:	Garfield County, CO	TVD Reference:	WELL @ 5117.8ft (Original Well Elev)
Reference Site:	S14-T7S-R96W	MD Reference:	WELL @ 5117.8ft (Original Well Elev)
Site Error:	0.0ft	North Reference:	True
Reference Well:	Nolte 43B-14	Survey Calculation Method:	Minimum Curvature
Well Error:	0.0ft	Output errors are at	2.00 sigma
Reference Wellbore	DD	Database:	USA EDM 5000 Multi Users DB
Reference Design:	Plan #3	Offset TVD Reference:	Offset Datum

Offset Design S14-T7S-R96W - Nolte 44C-14 - DD - Plan #3													Offset Site Error:	0.0 ft
Survey Program: 0-MWD													Offset Well Error:	0.0 ft
Reference		Offset		Semi Major Axis		Highside Toolface (°)	Distance		Total Uncertainty Axis	Separation Factor	Warning			
Measured Depth (ft)	Vertical Depth (ft)	Measured Depth (ft)	Vertical Depth (ft)	Reference (ft)	Offset (ft)		Offset Wellbore Centre +N/-S (ft)	+E/-W (ft)						
0.0	0.0	0.0	0.0	0.0	0.0	-152.49	-28.4	-14.8	32.0					
100.0	100.0	100.0	100.0	0.1	0.1	-152.49	-28.4	-14.8	32.0	31.7	0.26	124.868		
200.0	200.0	200.0	200.0	0.3	0.3	-152.49	-28.4	-14.8	32.0	31.4	0.61	52.850		
300.0	300.0	300.0	300.0	0.5	0.5	-152.49	-28.4	-14.8	32.0	31.0	0.95	33.518 CC		
328.1	328.1	328.1	328.1	0.5	0.5	-139.42	-28.4	-14.8	32.1	31.0	1.05	30.463 ES		
400.0	400.0	400.0	400.0	0.7	0.7	-140.04	-28.4	-14.8	32.5	31.2	1.30	24.925		
500.0	499.8	498.8	498.7	0.8	0.8	-141.86	-28.8	-17.3	38.1	36.4	1.66	22.963 SF		
600.0	599.3	596.4	596.0	1.1	1.0	-142.05	-30.3	-24.5	50.8	48.7	2.04	24.950		
700.0	698.0	691.7	690.9	1.4	1.2	-144.40	-35.5	-33.3	71.9	69.4	2.43	29.597		
800.0	795.8	787.9	786.3	1.7	1.5	-147.40	-42.2	-42.4	98.9	96.0	2.84	34.809		
900.0	892.4	882.6	880.4	2.2	1.7	-150.08	-48.9	-51.4	130.4	127.1	3.26	39.970		
1,000.0	987.5	975.6	972.7	2.8	1.9	-152.38	-55.4	-60.2	166.5	162.8	3.69	45.140		
1,100.0	1,080.9	1,066.6	1,063.1	3.4	2.2	-154.30	-61.8	-68.8	207.2	203.1	4.11	50.352		
1,200.0	1,172.2	1,155.4	1,151.3	4.2	2.4	-155.89	-68.0	-77.3	252.4	247.9	4.54	55.621		
1,300.0	1,261.3	1,241.8	1,237.0	5.0	2.6	-157.19	-74.1	-85.4	302.2	297.2	4.96	60.947		
1,400.0	1,347.9	1,325.4	1,320.1	5.9	2.9	-158.25	-80.0	-93.4	356.2	350.9	5.37	66.314		
1,500.0	1,432.9	1,407.4	1,401.5	6.8	3.1	-159.68	-85.7	-101.1	412.9	407.1	5.80	71.188		
1,600.0	1,517.9	1,489.3	1,482.8	7.7	3.3	-160.82	-91.5	-108.9	469.8	463.6	6.23	75.405		
1,700.0	1,602.9	1,571.2	1,564.2	8.7	3.5	-161.72	-97.2	-116.7	526.8	520.1	6.66	79.109		
1,800.0	1,687.8	1,653.1	1,645.5	9.6	3.7	-162.44	-103.0	-124.4	583.9	576.8	7.09	82.386		
1,900.0	1,772.8	1,735.1	1,726.9	10.5	3.9	-163.03	-108.7	-132.2	641.0	633.4	7.51	85.307		
2,000.0	1,857.8	1,817.0	1,808.3	11.5	4.2	-163.53	-114.5	-140.0	698.1	690.2	7.94	87.924		
2,100.0	1,942.8	1,898.9	1,889.6	12.4	4.4	-163.95	-120.2	-147.7	755.3	746.9	8.37	90.283		
2,200.0	2,027.8	1,980.9	1,971.0	13.3	4.6	-164.32	-126.0	-155.5	812.5	803.7	8.79	92.420		
2,300.0	2,112.8	2,062.8	2,052.3	14.3	4.8	-164.63	-131.7	-163.3	869.7	860.5	9.22	94.364		
2,400.0	2,197.7	2,144.7	2,133.7	15.2	5.0	-164.91	-137.5	-171.0	926.9	917.3	9.64	96.140		
2,500.0	2,282.7	2,226.6	2,215.0	16.2	5.3	-165.15	-143.2	-178.8	984.1	974.1	10.07	97.770		
2,600.0	2,367.7	2,308.6	2,296.4	17.1	5.5	-165.37	-149.0	-186.6	1,041.4	1,030.9	10.49	99.270		
2,700.0	2,452.7	2,390.5	2,377.8	18.0	5.7	-165.57	-154.7	-194.3	1,098.6	1,087.7	10.91	100.655		
2,800.0	2,537.7	2,472.4	2,459.1	19.0	5.9	-165.74	-160.5	-202.1	1,155.9	1,144.6	11.34	101.938		
2,900.0	2,622.7	2,554.4	2,540.5	19.9	6.1	-165.90	-166.2	-209.8	1,213.2	1,201.4	11.76	103.130		
3,000.0	2,707.9	2,636.5	2,622.1	20.8	6.4	-166.24	-172.0	-217.6	1,270.1	1,257.9	12.21	104.063		
3,100.0	2,795.2	2,721.0	2,706.0	21.7	6.6	-166.76	-177.9	-225.6	1,323.6	1,310.9	12.67	104.426		

Cathedral Energy Services

Anticollision Report

Company:	Caerus Oil & Gas (NAD 27)	Local Co-ordinate Reference:	Well Nolte 43B-14
Project:	Garfield County, CO	TVD Reference:	WELL @ 5117.8ft (Original Well Elev)
Reference Site:	S14-T7S-R96W	MD Reference:	WELL @ 5117.8ft (Original Well Elev)
Site Error:	0.0ft	North Reference:	True
Reference Well:	Nolte 43B-14	Survey Calculation Method:	Minimum Curvature
Well Error:	0.0ft	Output errors are at	2.00 sigma
Reference Wellbore	DD	Database:	USA EDM 5000 Multi Users DB
Reference Design:	Plan #3	Offset TVD Reference:	Offset Datum

Offset Design S14-T7S-R96W - Nolte SWD 1-14 - DD - Plan #3												Offset Site Error: 0.0 ft	
Survey Program: 0-MWD												Offset Well Error: 0.0 ft	
Reference		Offset		Semi Major Axis			Distance					Warning	
Measured Depth	Vertical Depth	Measured Depth	Vertical Depth	Reference	Offset	Highside Toolface	Offset Wellbore Centre	Between Centres	Between Ellipses	Total Uncertainty Axis	Separation Factor		
(ft)	(ft)	(ft)	(ft)	(ft)	(ft)	(°)	+N/-S (ft)	+E/-W (ft)	(ft)	(ft)			
0.0	0.0	0.0	0.0	0.0	0.0	-152.48	-35.5	-18.5	40.0				
100.0	100.0	100.0	100.0	0.1	0.1	-152.48	-35.5	-18.5	40.0	39.7	0.26	155.971	
200.0	200.0	200.0	200.0	0.3	0.3	-152.48	-35.5	-18.5	40.0	39.4	0.61	66.041	
300.0	300.0	300.0	300.0	0.5	0.5	-152.48	-35.5	-18.5	40.0	39.0	0.95	41.888 CC	
328.1	328.1	328.1	328.1	0.5	0.5	-139.38	-35.5	-18.5	40.1	39.0	1.05	38.061 ES	
400.0	400.0	400.0	400.0	0.7	0.7	-139.88	-35.5	-18.5	40.5	39.2	1.30	31.054	
500.0	499.8	499.8	499.8	0.8	0.8	-144.14	-35.5	-18.5	44.6	43.0	1.66	26.943	
600.0	599.3	599.3	599.3	1.1	1.0	-150.58	-35.5	-18.5	53.4	51.4	2.01	26.569 SF	
700.0	698.0	698.0	698.0	1.4	1.2	-156.93	-35.5	-18.5	67.5	65.2	2.36	28.584	
800.0	795.8	795.8	795.8	1.7	1.3	-162.11	-35.5	-18.5	87.1	84.4	2.70	32.225	
900.0	892.4	892.4	892.4	2.2	1.5	-165.98	-35.5	-18.5	112.0	109.0	3.03	36.993	
1,000.0	987.5	987.5	987.5	2.8	1.7	-168.81	-35.5	-18.5	142.3	138.9	3.34	42.570	
1,100.0	1,080.9	1,080.9	1,080.9	3.4	1.8	-170.87	-35.5	-18.5	177.6	174.0	3.64	48.762	
1,200.0	1,172.2	1,172.2	1,172.2	4.2	2.0	-172.39	-35.5	-18.5	217.9	214.0	3.93	55.452	
1,300.0	1,261.3	1,261.3	1,261.3	5.0	2.2	-173.53	-35.5	-18.5	263.0	258.8	4.20	62.569	
1,400.0	1,347.9	1,347.9	1,347.9	5.9	2.3	-174.40	-35.5	-18.5	312.8	308.4	4.46	70.071	
1,500.0	1,432.9	1,432.9	1,432.9	6.8	2.5	-175.19	-35.5	-18.5	365.4	360.6	4.77	76.551	
1,600.0	1,517.9	1,517.9	1,517.9	7.7	2.6	-175.79	-35.5	-18.5	417.9	412.9	5.09	82.154	
1,700.0	1,602.9	1,602.9	1,602.9	8.7	2.8	-176.26	-35.5	-18.5	470.6	465.2	5.40	87.110	
1,800.0	1,687.8	1,687.8	1,687.8	9.6	2.9	-176.64	-35.5	-18.5	523.2	517.5	5.72	91.524	
1,900.0	1,772.8	1,772.8	1,772.8	10.5	3.0	-176.95	-35.5	-18.5	575.8	569.8	6.03	95.480	
2,000.0	1,857.8	1,857.8	1,857.8	11.5	3.2	-177.20	-35.5	-18.5	628.5	622.1	6.35	99.045	
2,100.0	1,942.8	1,942.8	1,942.8	12.4	3.3	-177.42	-35.5	-18.5	681.2	674.5	6.66	102.276	
2,200.0	2,027.8	2,027.8	2,027.8	13.3	3.5	-177.60	-35.5	-18.5	733.8	726.9	6.97	105.216	
2,300.0	2,112.8	2,112.8	2,112.8	14.3	3.6	-177.76	-35.5	-18.5	786.5	779.2	7.29	107.904	
2,400.0	2,197.7	2,197.7	2,197.7	15.2	3.8	-177.90	-35.5	-18.5	839.2	831.6	7.60	110.370	
2,500.0	2,282.7	2,282.7	2,282.7	16.2	3.9	-178.03	-35.5	-18.5	891.9	883.9	7.92	112.640	
2,600.0	2,367.7	2,367.7	2,367.7	17.1	4.1	-178.14	-35.5	-18.5	944.5	936.3	8.23	114.738	
2,700.0	2,452.7	2,452.7	2,452.7	18.0	4.2	-178.24	-35.5	-18.5	997.2	988.7	8.55	116.682	
2,800.0	2,537.7	2,537.7	2,537.7	19.0	4.4	-178.33	-35.5	-18.5	1,049.9	1,041.1	8.86	118.488	
2,900.0	2,622.7	2,622.7	2,622.7	19.9	4.5	-178.41	-35.5	-18.5	1,102.6	1,093.4	9.18	120.171	
3,000.0	2,707.9	2,707.9	2,707.9	20.8	4.7	-178.50	-35.5	-18.5	1,154.9	1,145.4	9.53	121.163	
3,100.0	2,795.2	2,795.2	2,795.2	21.7	4.8	-178.60	-35.5	-18.5	1,203.6	1,193.6	9.95	121.006	
3,200.0	2,885.0	2,885.0	2,885.0	22.4	5.0	-178.68	-35.5	-18.5	1,247.5	1,237.2	10.35	120.515	
3,300.0	2,977.0	2,977.0	2,977.0	23.1	5.1	-178.75	-35.5	-18.5	1,286.7	1,276.0	10.75	119.732	
3,400.0	3,070.9	3,070.9	3,070.9	23.7	5.3	-178.81	-35.5	-18.5	1,321.1	1,310.0	11.13	118.694	
3,500.0	3,166.5	3,166.5	3,166.5	24.2	5.5	-178.85	-35.5	-18.5	1,350.5	1,339.0	11.50	117.430	

Cathedral Energy Services

Anticollision Report

Company:	Caerus Oil & Gas (NAD 27)	Local Co-ordinate Reference:	Well Nolte 43B-14
Project:	Garfield County, CO	TVD Reference:	WELL @ 5117.8ft (Original Well Elev)
Reference Site:	S14-T7S-R96W	MD Reference:	WELL @ 5117.8ft (Original Well Elev)
Site Error:	0.0ft	North Reference:	True
Reference Well:	Nolte 43B-14	Survey Calculation Method:	Minimum Curvature
Well Error:	0.0ft	Output errors are at	2.00 sigma
Reference Wellbore	DD	Database:	USA EDM 5000 Multi Users DB
Reference Design:	Plan #3	Offset TVD Reference:	Offset Datum

Reference Depths are relative to WELL @ 5117.8ft (Original Well Elev)
Offset Depths are relative to Offset Datum
Central Meridian is -105.500000 °

Coordinates are relative to: Nolte 43B-14
Coordinate System is US State Plane 1927 (Exact solution), Colorado Central 502
Grid Convergence at Surface is: -1.62°

