

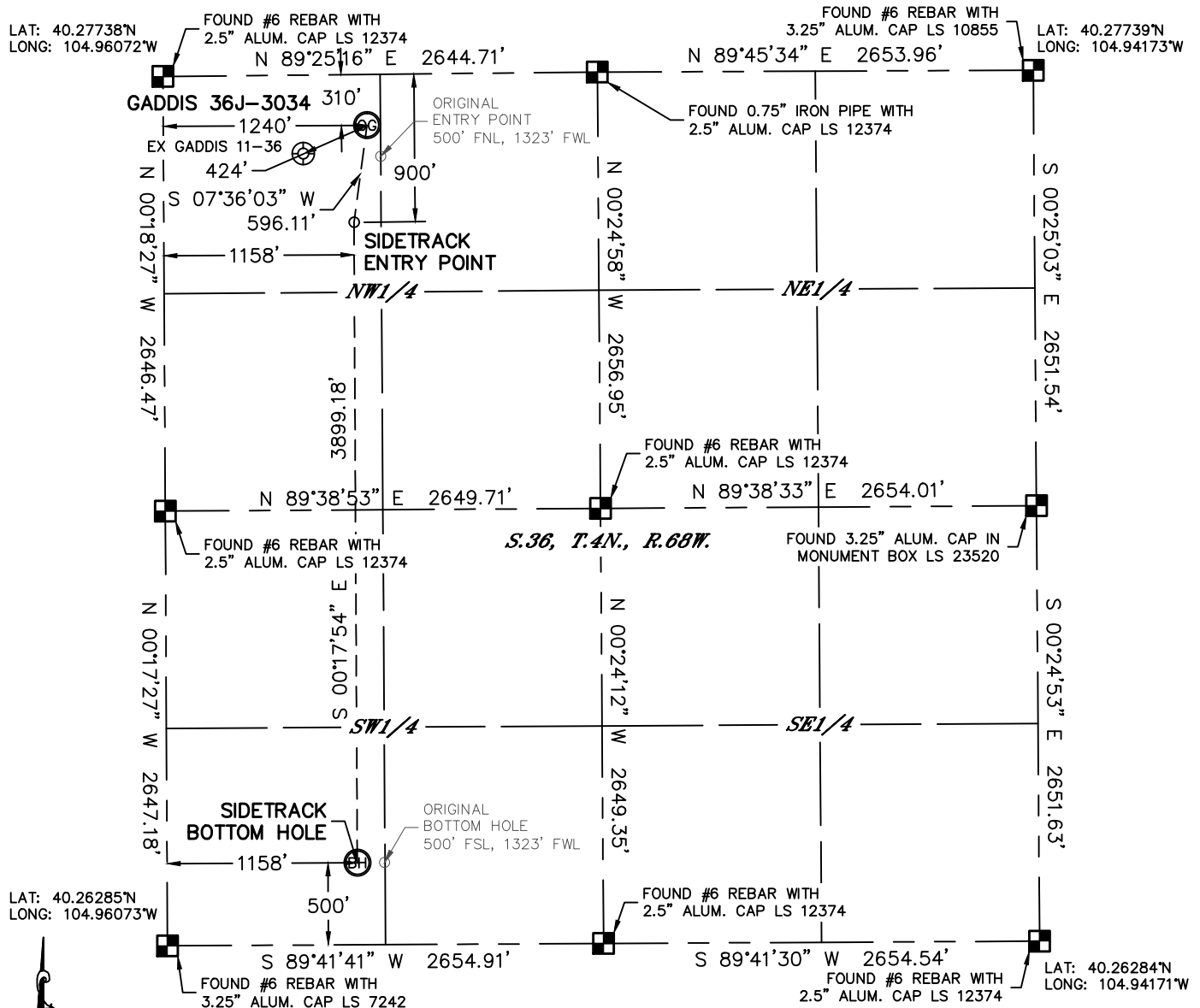


Lat40°, Inc. 1635 Foxtrail Drive, Suite 325 Loveland, CO 970-776-3321

# WELL LOCATION CERTIFICATE

THIS MAP DOES NOT REPRESENT A BOUNDARY SURVEY

SECTION: 36  
TOWNSHIP: 4N  
RANGE: 68W

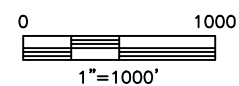


LAT: 40.26285°N  
LONG: 104.96073°W

LAT: 40.26284°N  
LONG: 104.94171°W

In accordance with a request from Liz Lindow with PDC ENERGY Lat40°, Inc. has determined the surface location of the GADDIS 36J-3034 to be 310' from the NORTH line and 1240' from the WEST line and the SIDETRACK bottom hole to be 500' from the SOUTH line and 1158' from the WEST line as measured at right angles from the section lines of Section 36, Township 4 North, Range 68 West of the Sixth Principal Meridian, County of Weld, State of Colorado.

I hereby state that this Well Location Certificate was prepared by me, or under my direct supervision, that the fieldwork was completed on 11/13/2012, for and on behalf of PDC ENERGY. That this is not a Land Survey Plat or an Improvement Survey Plat, and that it is not to be relied upon for establishment of fence, building, or other future improvement lines.



## NOTE:

- 1) Bearings shown are Grid Bearings of the Colorado State Plane Coordinate System, North Zone, North American Datum 1983/2007. The lineal dimensions as contained herein are based upon the "U.S. Survey Foot."
- 2) Ground elevations are based on an observed GPS elevation (NAVD 1988 DATUM).
- 3) NEAREST EXISTING WELL: GADDIS 11-36, 424'
- 4) IMPROVEMENTS: See LOCATION DRAWING for all visible improvements within 400' of disturbed area.
- 5) SURFACE USE: CROPLAND
- 6) INSTRUMENT OPERATOR: WYATT HALL

## SURFACE LOCATION

LAT: 40.27654°N  
LONG: 104.95627°W  
PDOP: 1.8  
ELEV: 5058'  
1/4, 1/4: NW1/4NW1/4  
NEAREST PROPERTY LINE: 310' NORTH

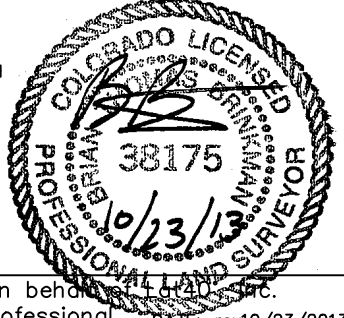
## SIDETRACK BOTTOM HOLE

LAT: 40.26422°N  
LONG: 104.95658°W

## SIDETRACK ENTRY POINT

LAT: 40.27492°N  
LONG: 104.95657°W

- LEGEND
- = ALIQUOT MONUMENT AS DESCRIBED
  - = CALCULATED POSITION



Brian T. Brinkman—On behalf of Lat40°, Inc.  
Colorado Licensed Professional  
Land Surveyor No. 38175  
DATE: rev10/23/2013  
PROJECT#: 2011351

NOTE  
According to Colorado law, you must commence any legal action based upon any defect in this W.L.C. within three years after you discover such defect. In no event, may any action based upon any defect in this survey be commenced more than ten years after the date of the certificate shown hereon. (13-80-105 C.R.S.)