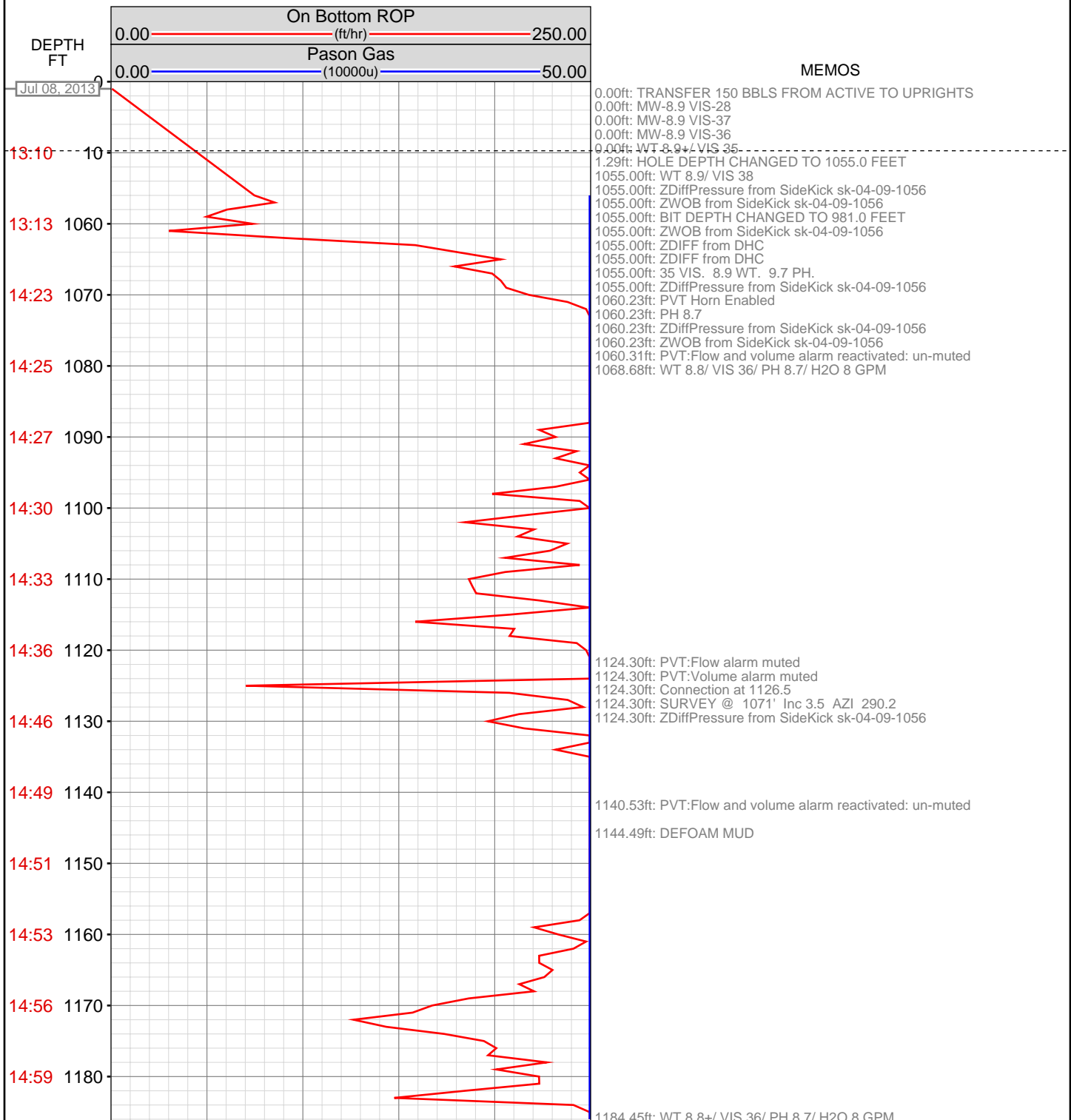


DataHub EDR Log

Wed Jul 17, 2013 15:56:09
Well Dossier 1373252799
Greg Veregin

OPERATOR: EnCana Oil & Gas (USA), Inc.
WELL: HAGEN 22-3B
FIELD:
LOCATION: NE NW SEC 22, T007S, R95W6
COUNTRY: USA
RIG: Pat-UTI 303

CONTRACTOR: Patterson-UTI Drilling Company
UNIQUE WELL ID: 05 045 22017
SPUD DATE: Jul 08, 2013 14:30
RELEASE DATE: Jul 14, 2013 19:00



1215.78ft: WT 8.8+ VIS 36/ PH 8.9/ H2O 6 GPM

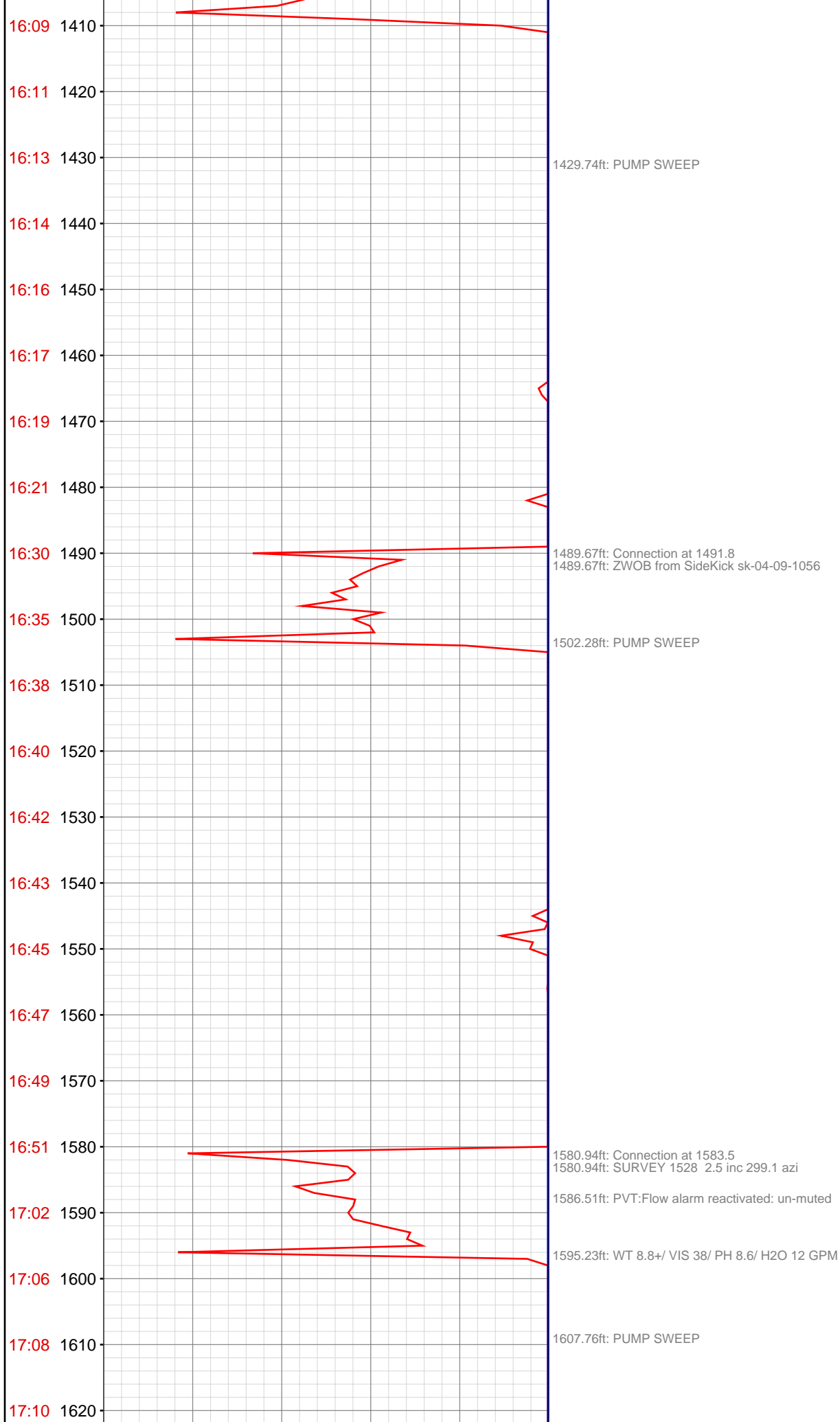
1215.78ft: PVT:Flow alarm muted
1215.78ft: Connection at 1218.0
1215.78ft: SURVEY @ 1162' Inc 3.3 Azi 294.1
1215.78ft: ZDiffPressure from SideKick sk-04-09-1056
1215.78ft: ZDiffPressure from SideKick sk-04-09-1056

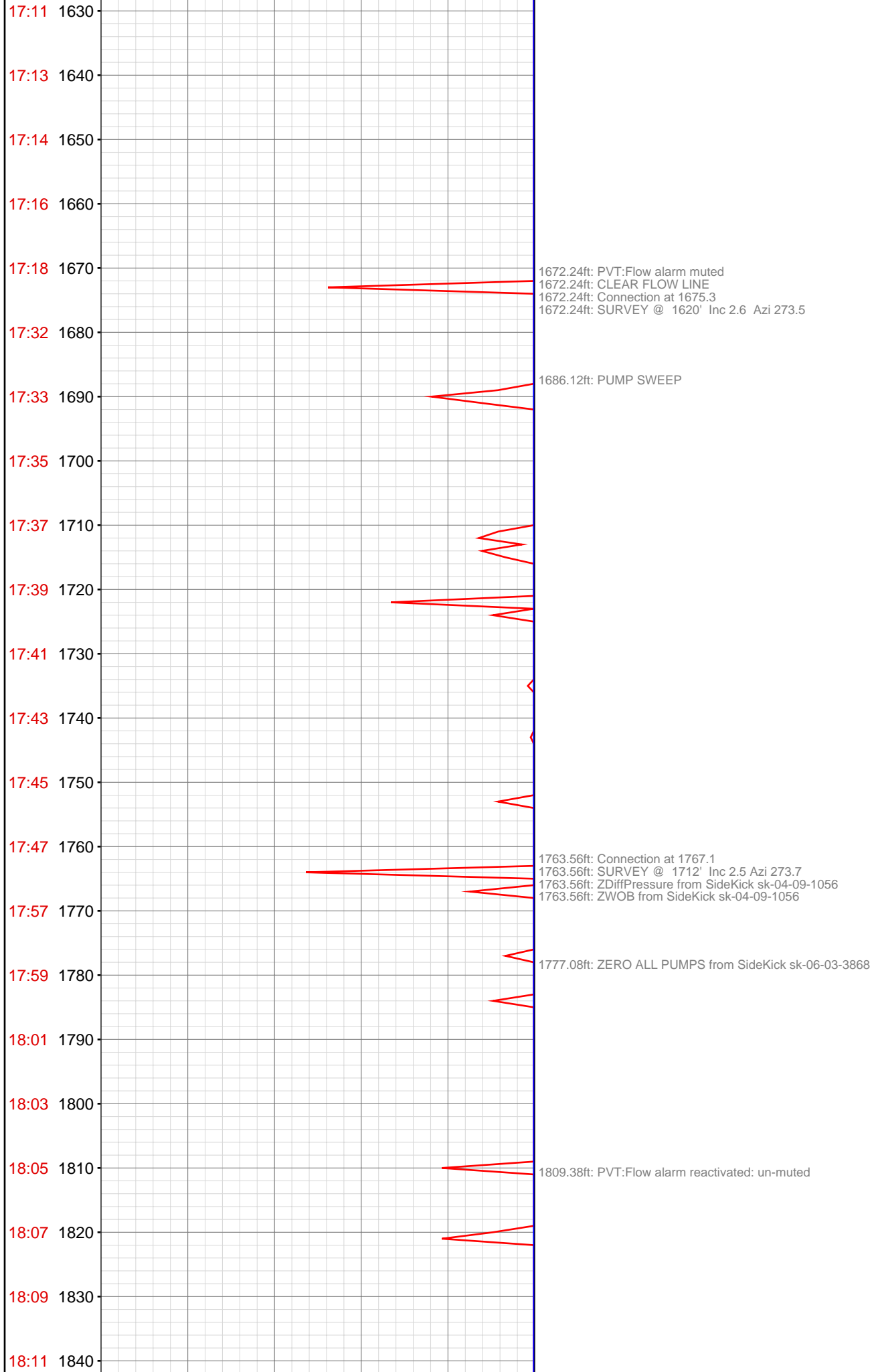
1307.13ft: Connection at 1309.2
1307.13ft: SURVEY @ 1254' Inc 3.3 AZI 293.2

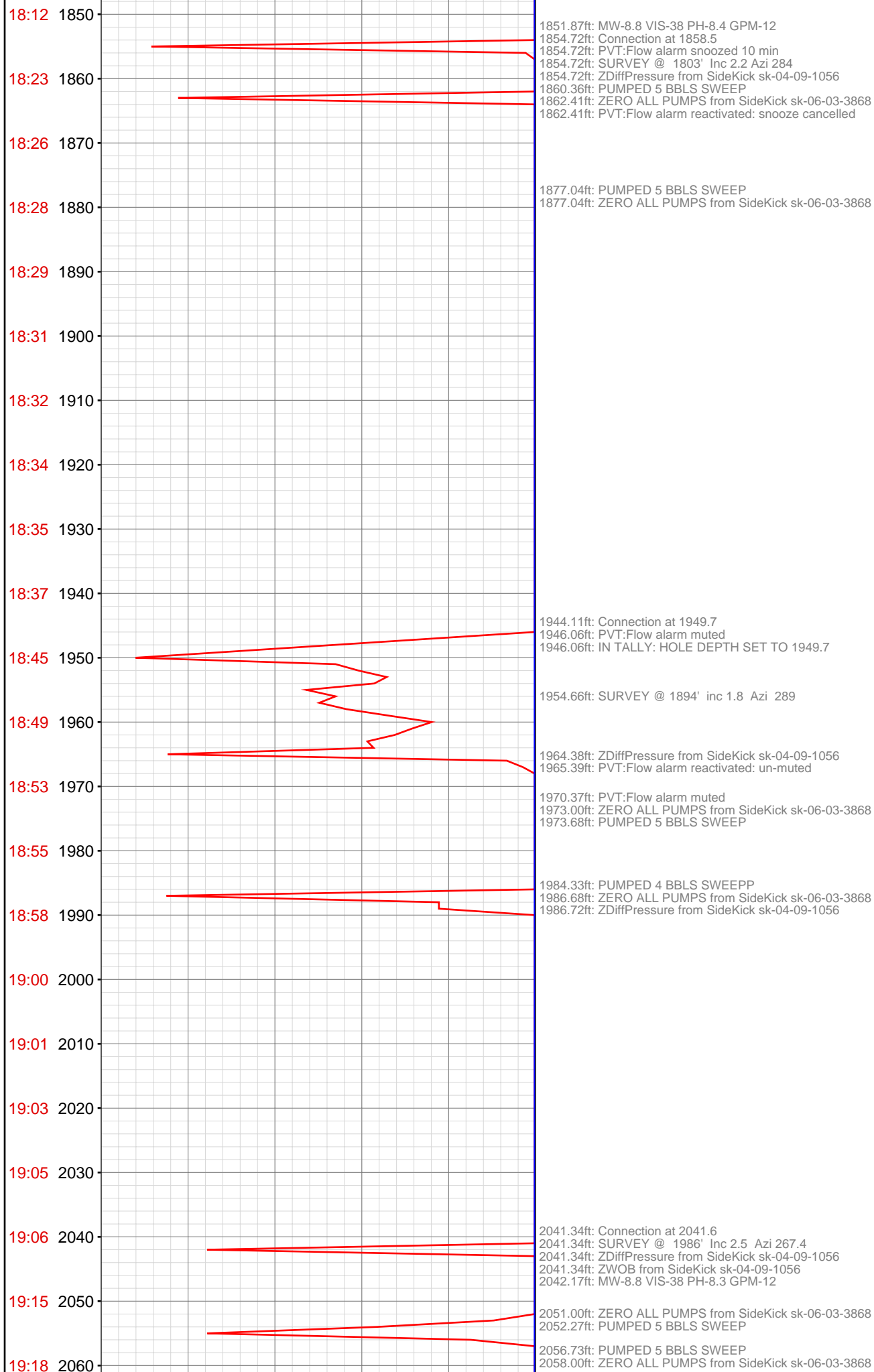
1325.00ft: PVT:Flow alarm reactivated: un-muted

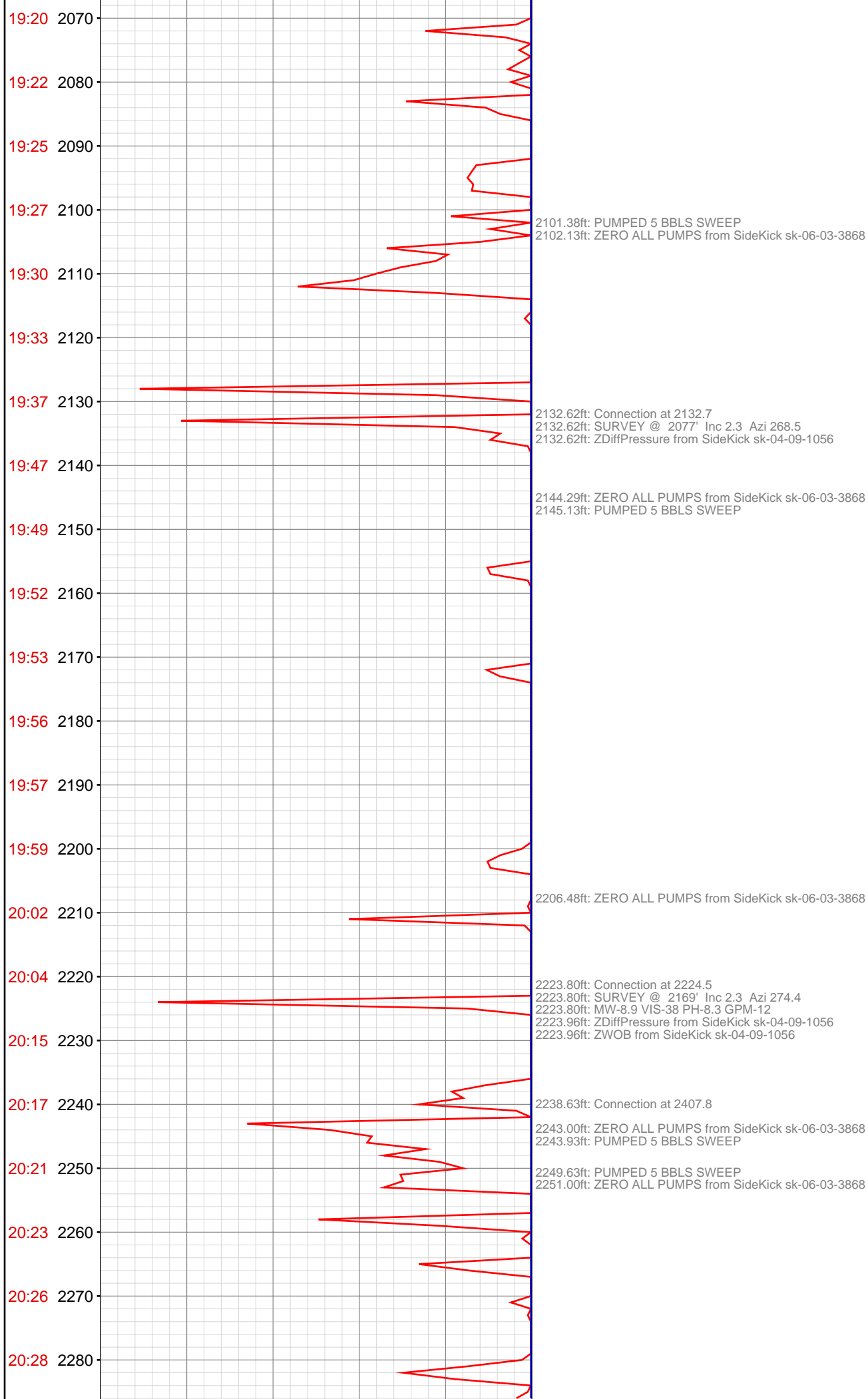
1348.19ft: PUMP SWEEP

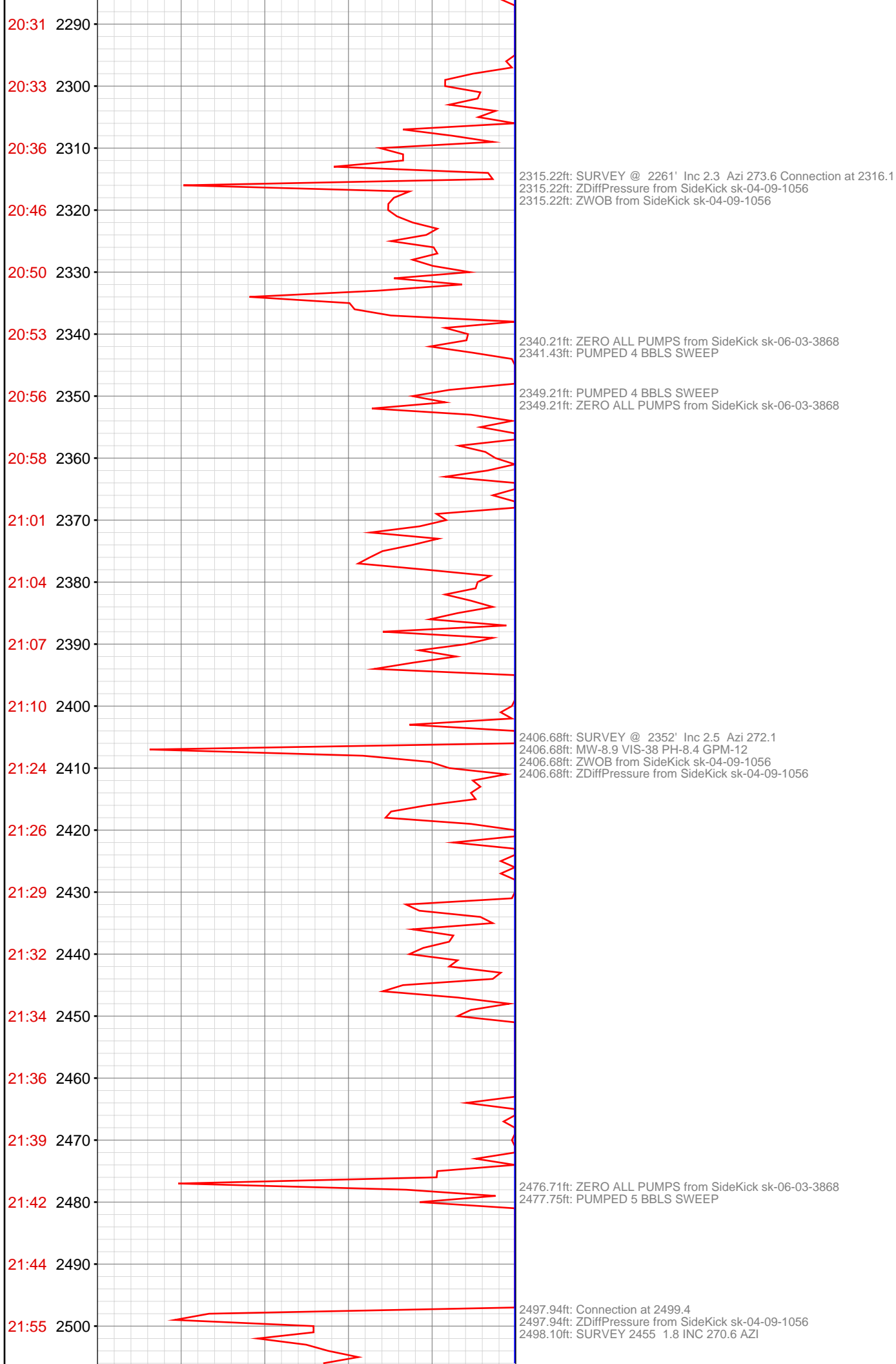
1398.18ft: Connection at 1400.5
1398.18ft: PVT:Flow alarm muted
1398.18ft: WT 8.8+ VIS 36/ PH 8.9/ H2O 12 GPM
1402.22ft: SURVEY @ 1345' Inc 3.1 Azi 304.9

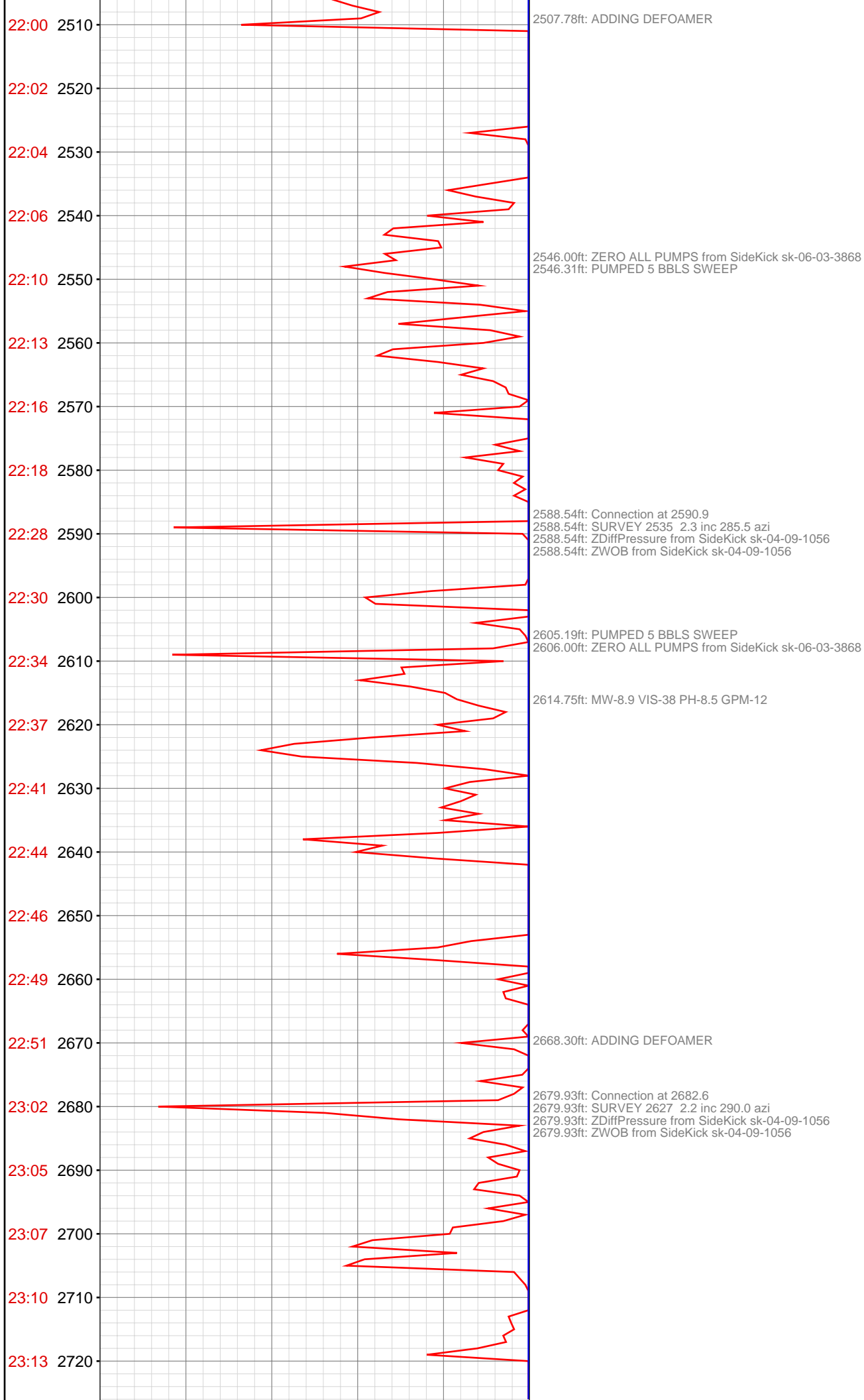


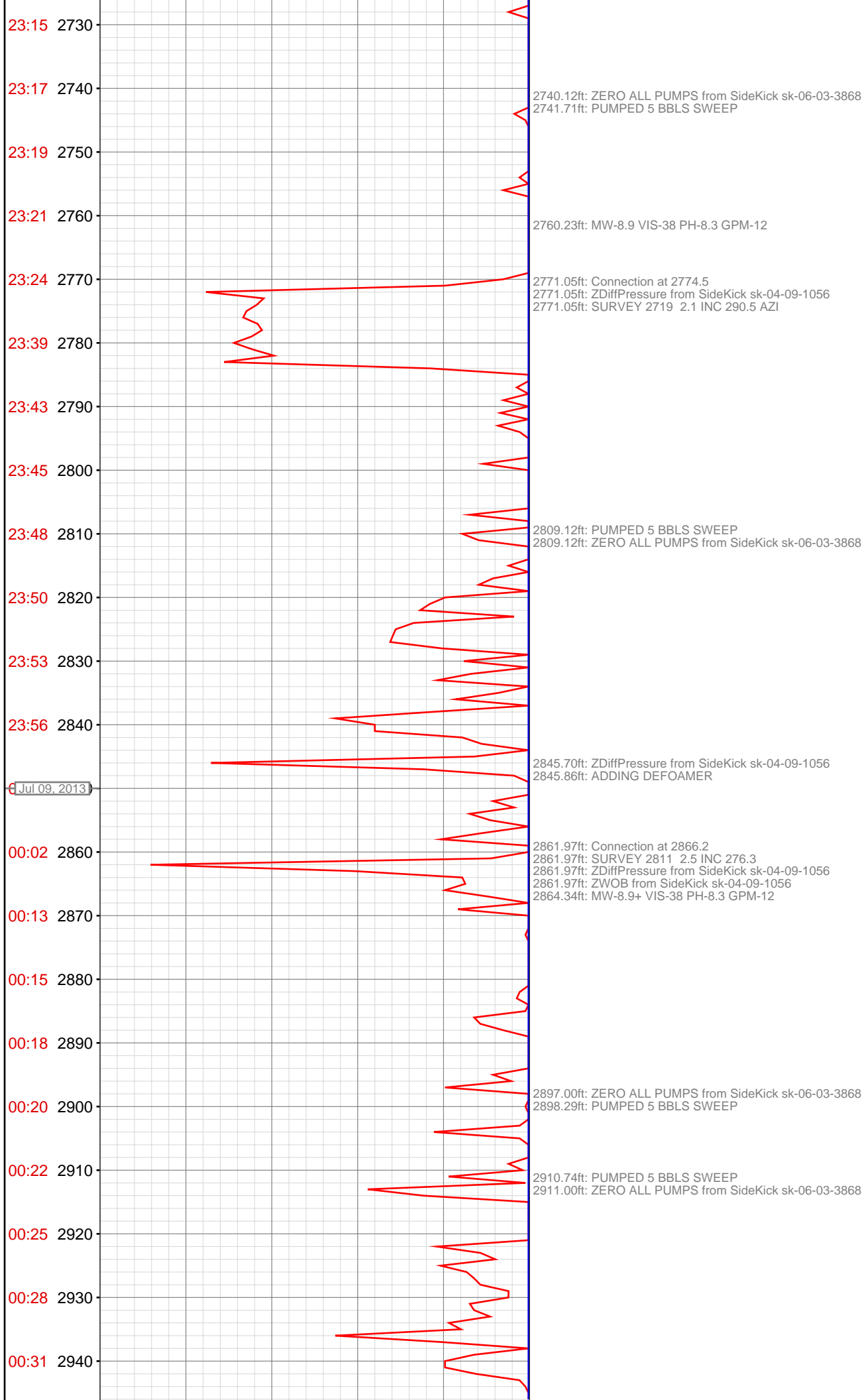


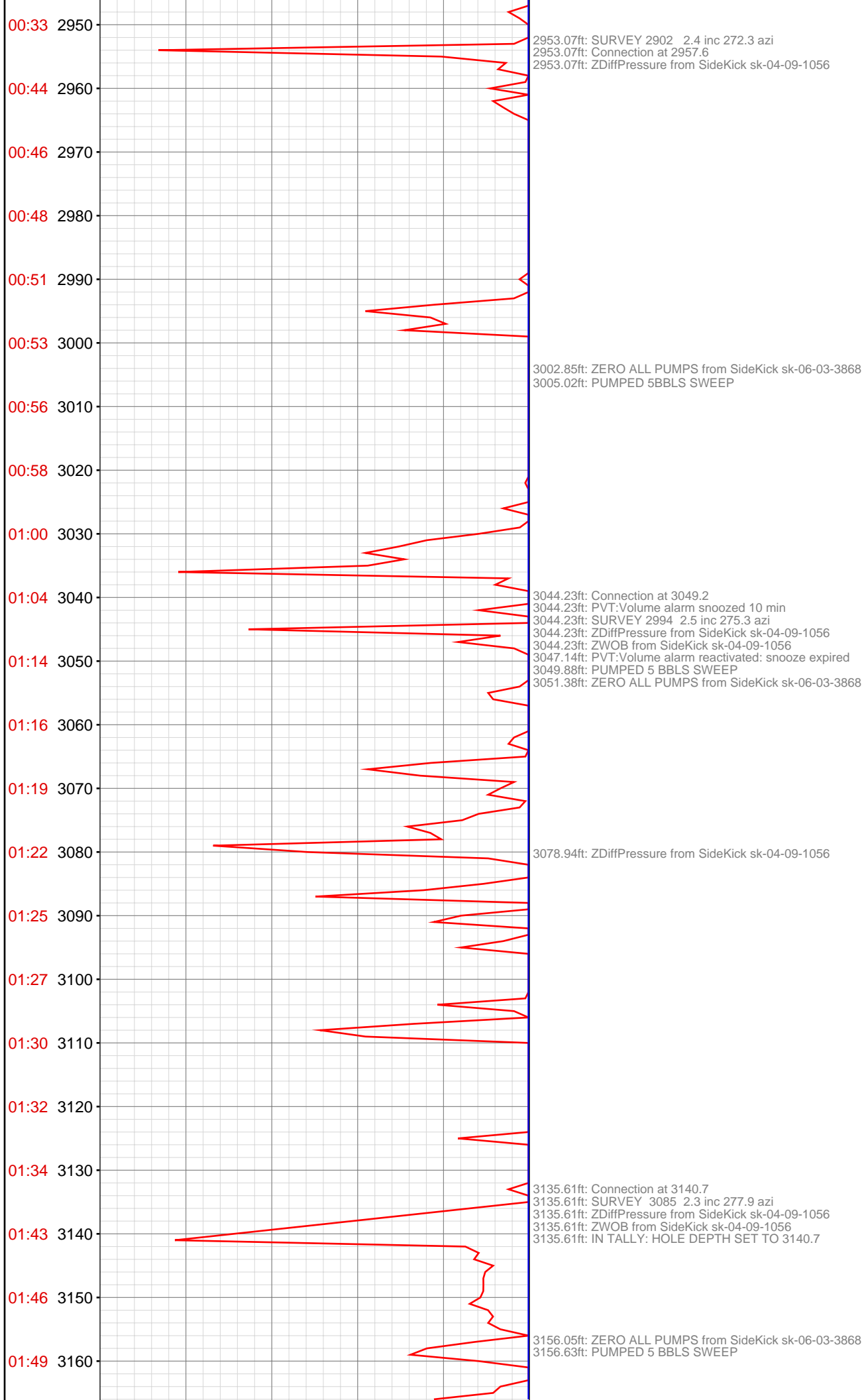


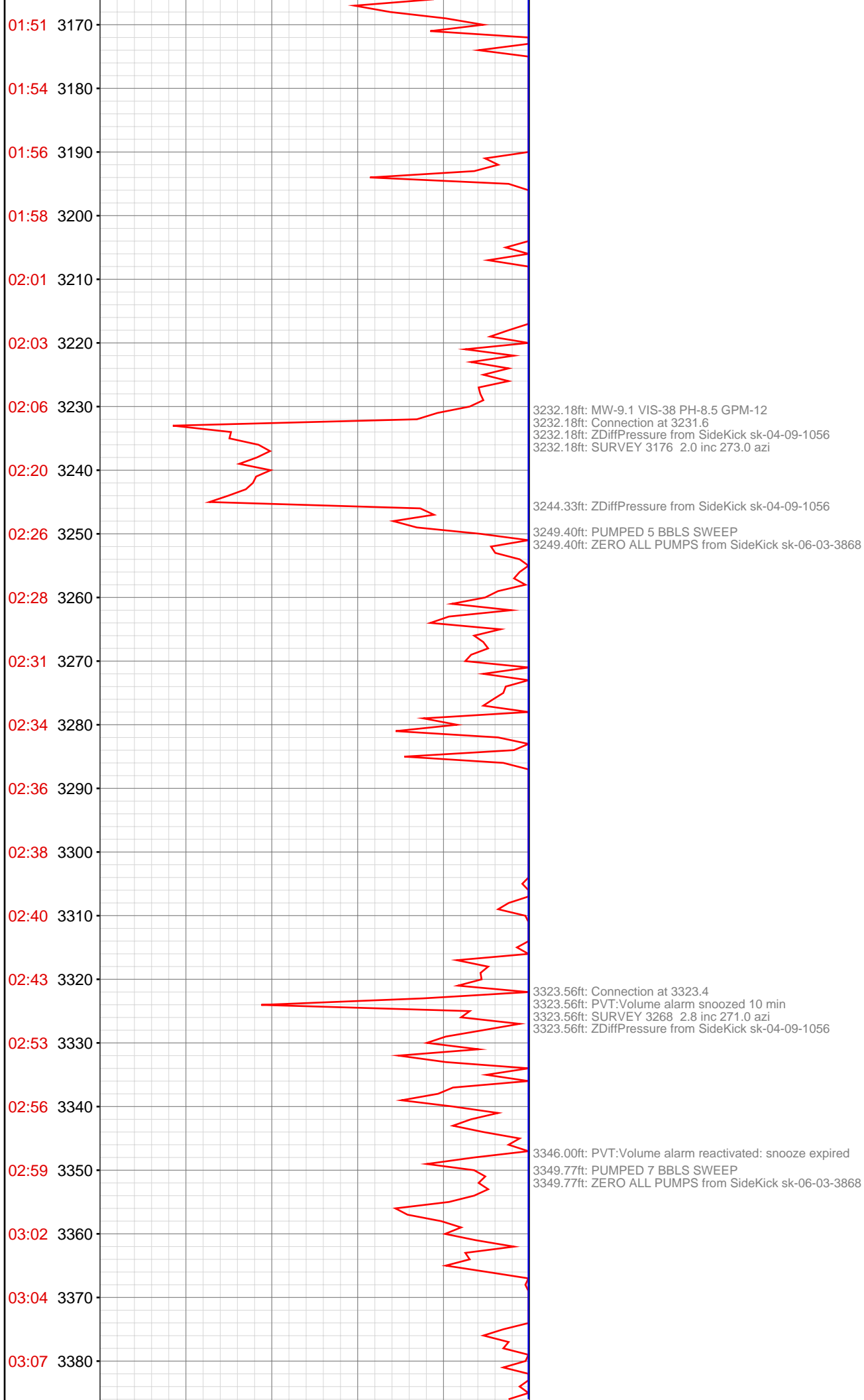


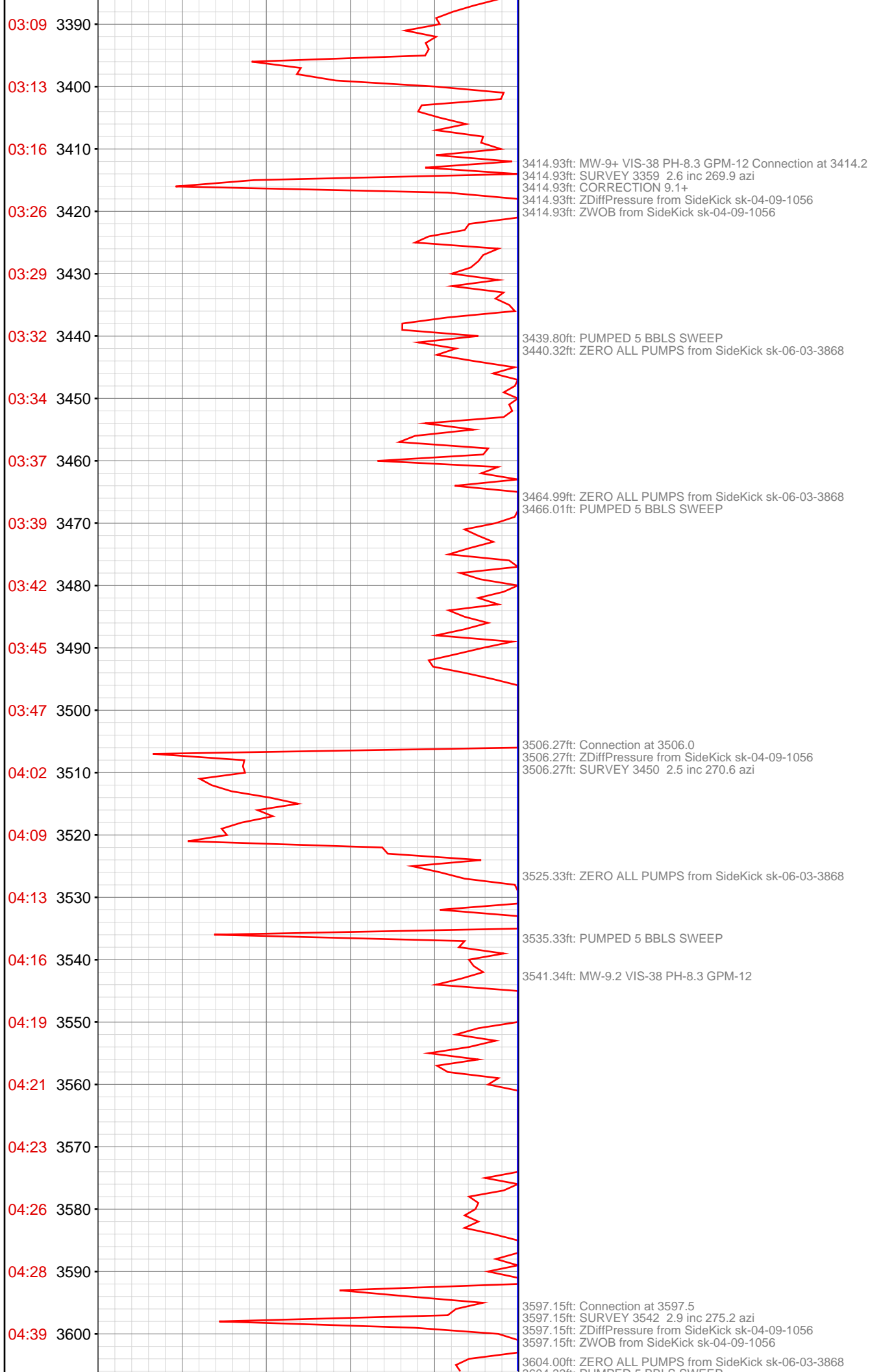


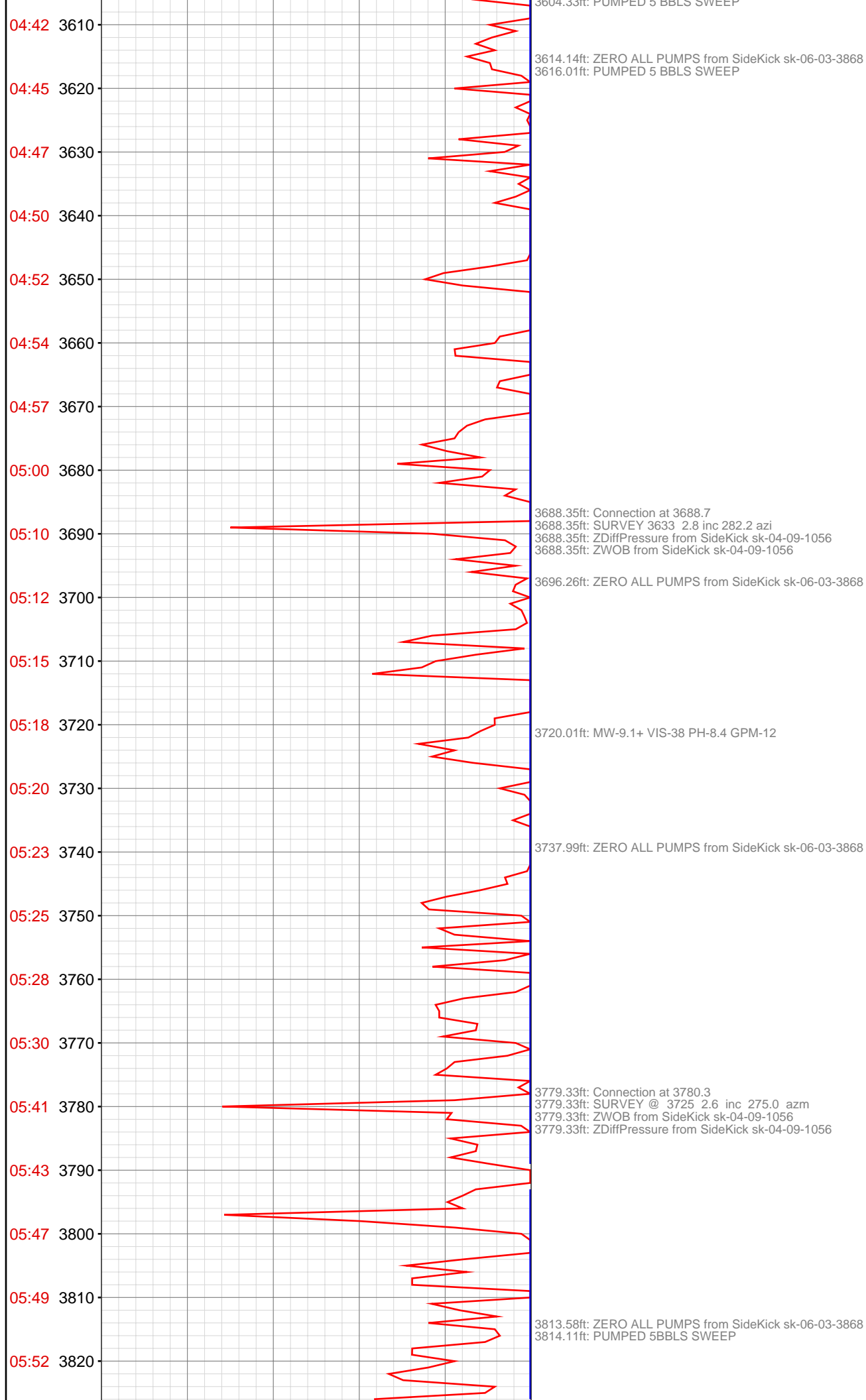


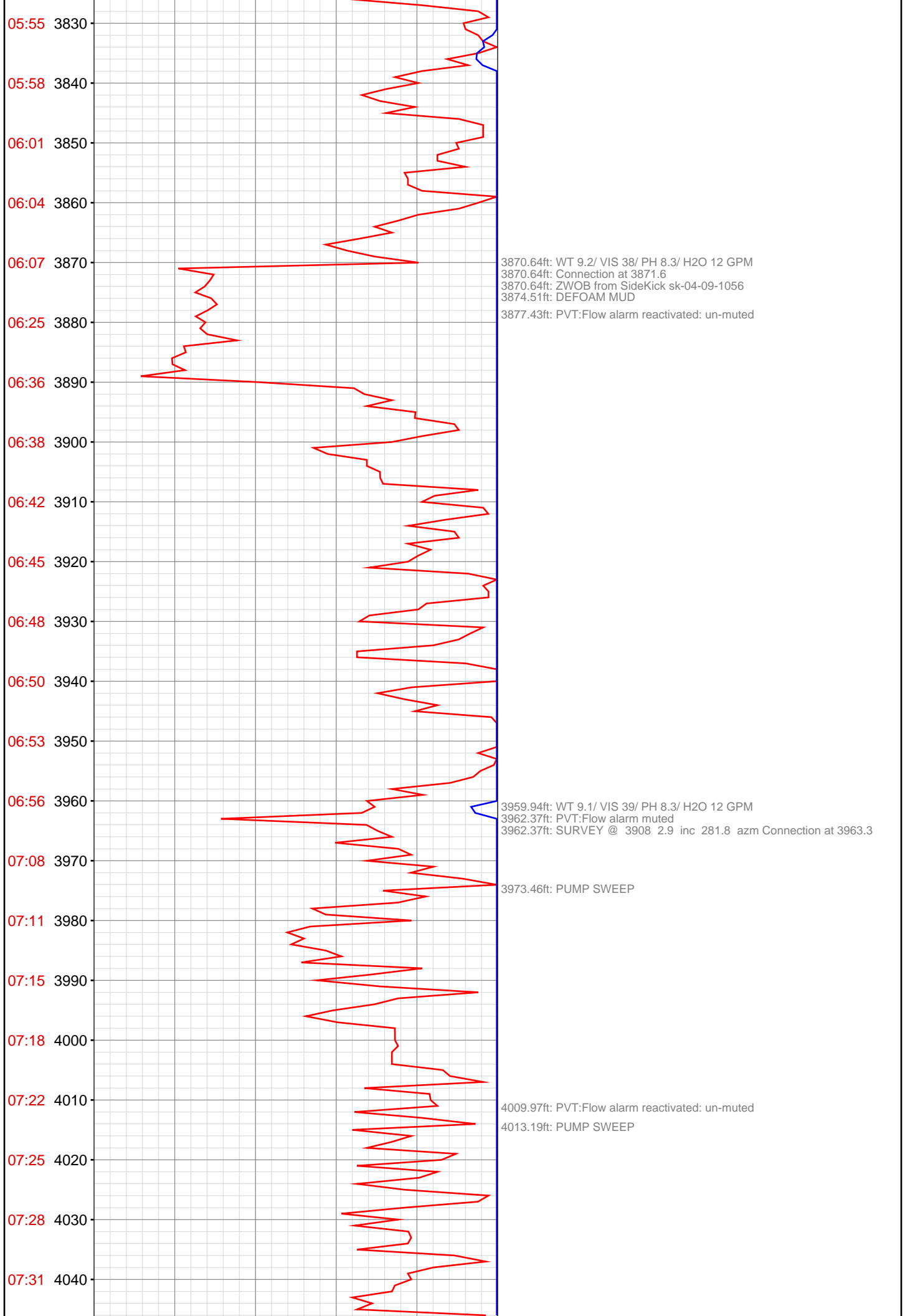


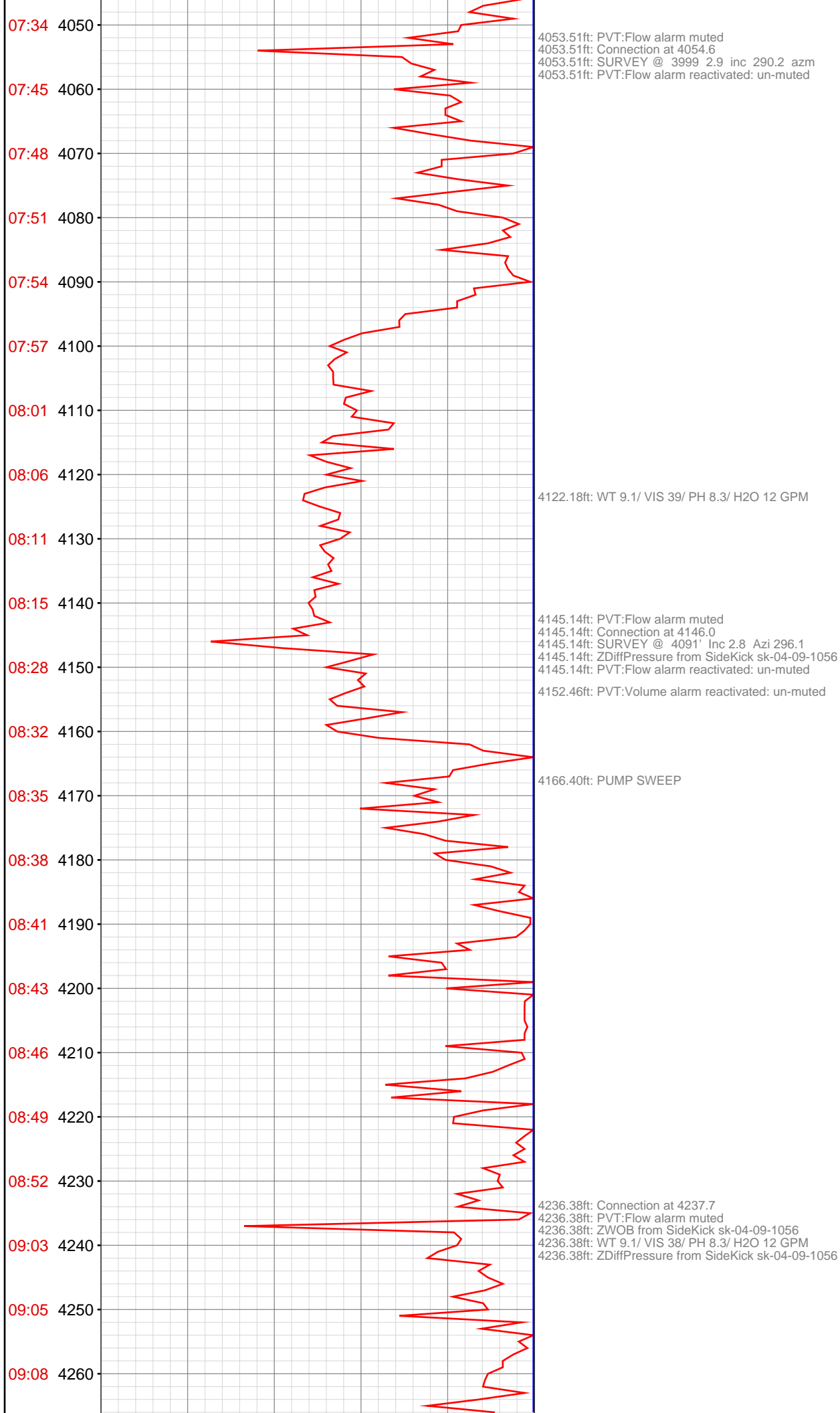


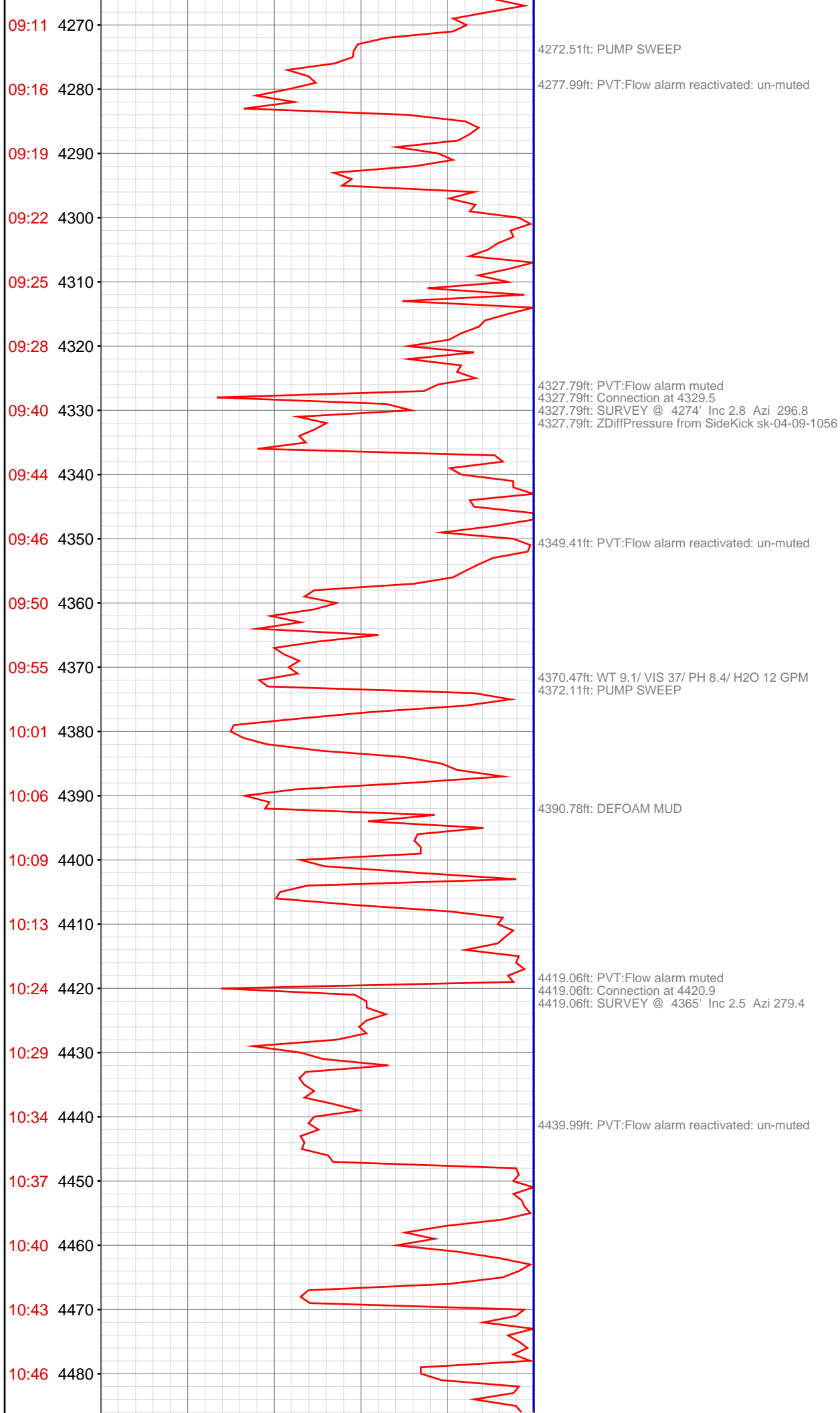


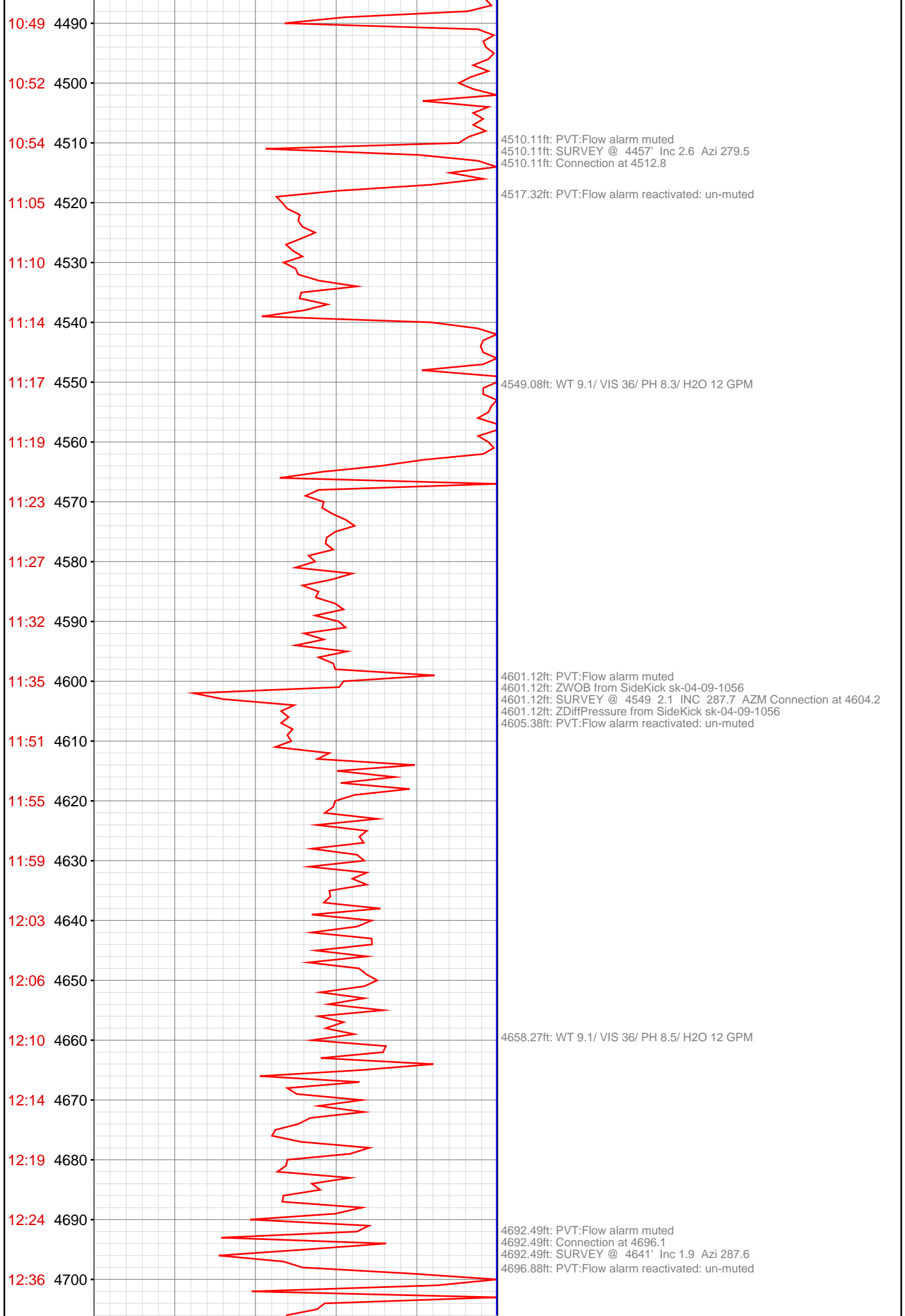


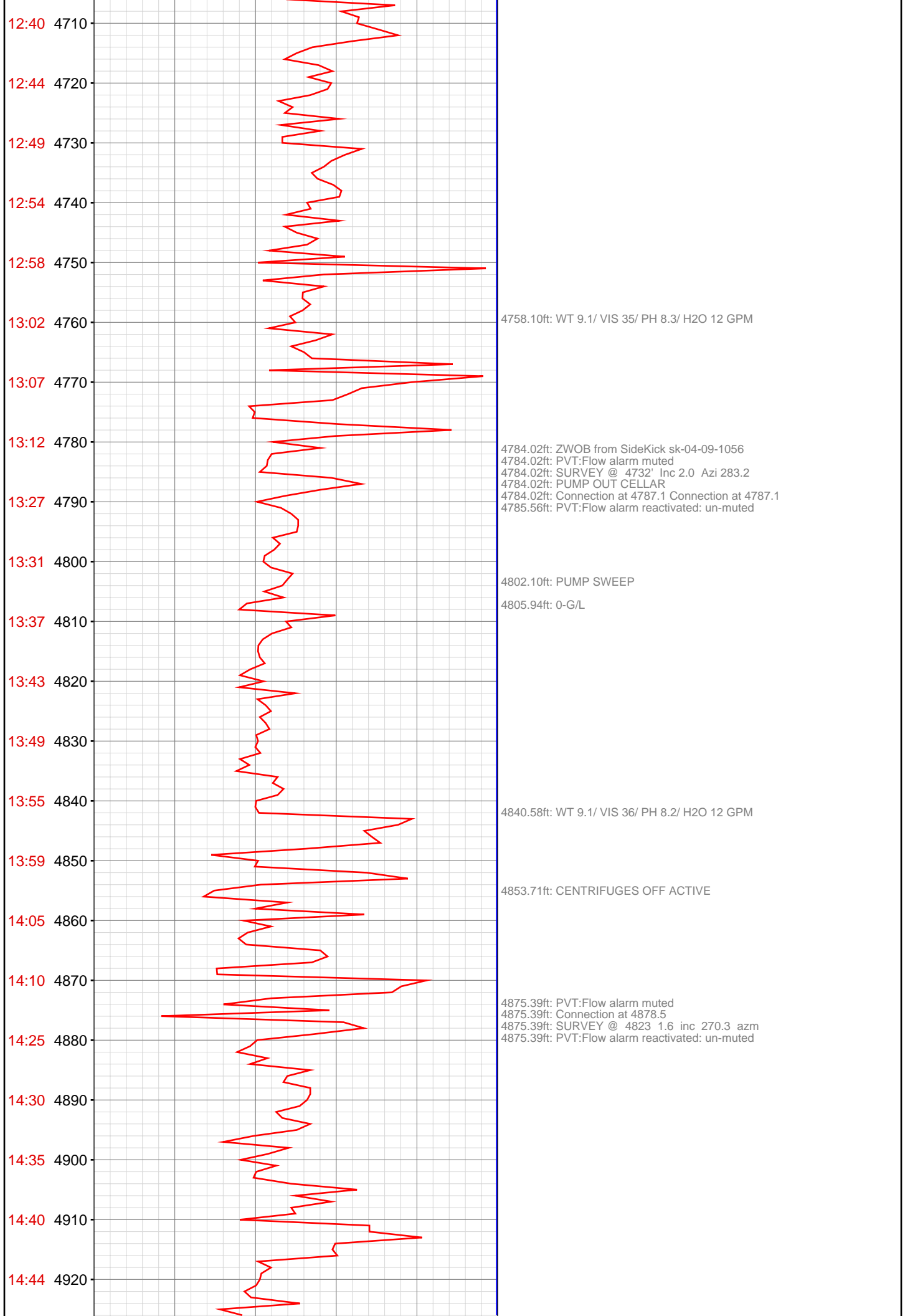












14:51 4930

14:57 4940

15:01 4950

15:06 4960

15:41 4970

15:45 4980

15:49 4990

15:53 5000

15:58 5010

16:03 5020

16:08 5030

16:13 5040

16:16 5050

16:30 5060

16:35 5070

16:39 5080

16:43 5090

16:48 5100

16:55 5110

17:01 5120

17:08 5130

17:13 5140

4938.09ft: WT 9.2/ VIS 36/ PH 8.3/ H2O 12 GPM

4966.50ft: PVT:Flow and volume alarm muted
4966.50ft: B-O-P DRILL
4966.50ft: S-P-R
4966.50ft: RIG SERVICE
4966.50ft: Connection at 4970.1
4966.50ft: SURVEY @ 4915' Inc 1.3 Azi 264.1

4977.00ft: PVT:Flow alarm reactivated: un-muted

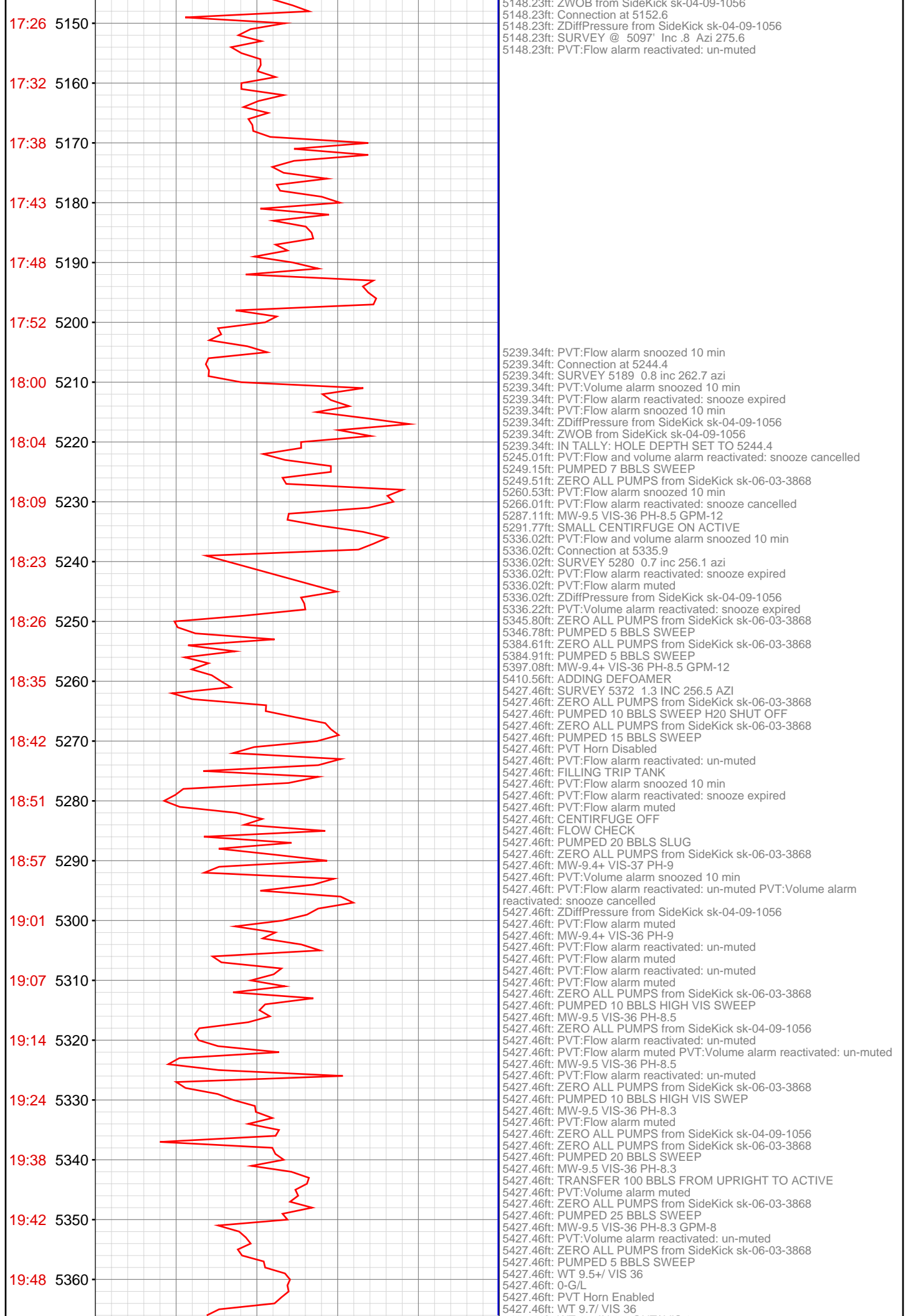
5000.69ft: WT 9.2/ VIS 36/ PH 8.7/ H2O 12 GPM

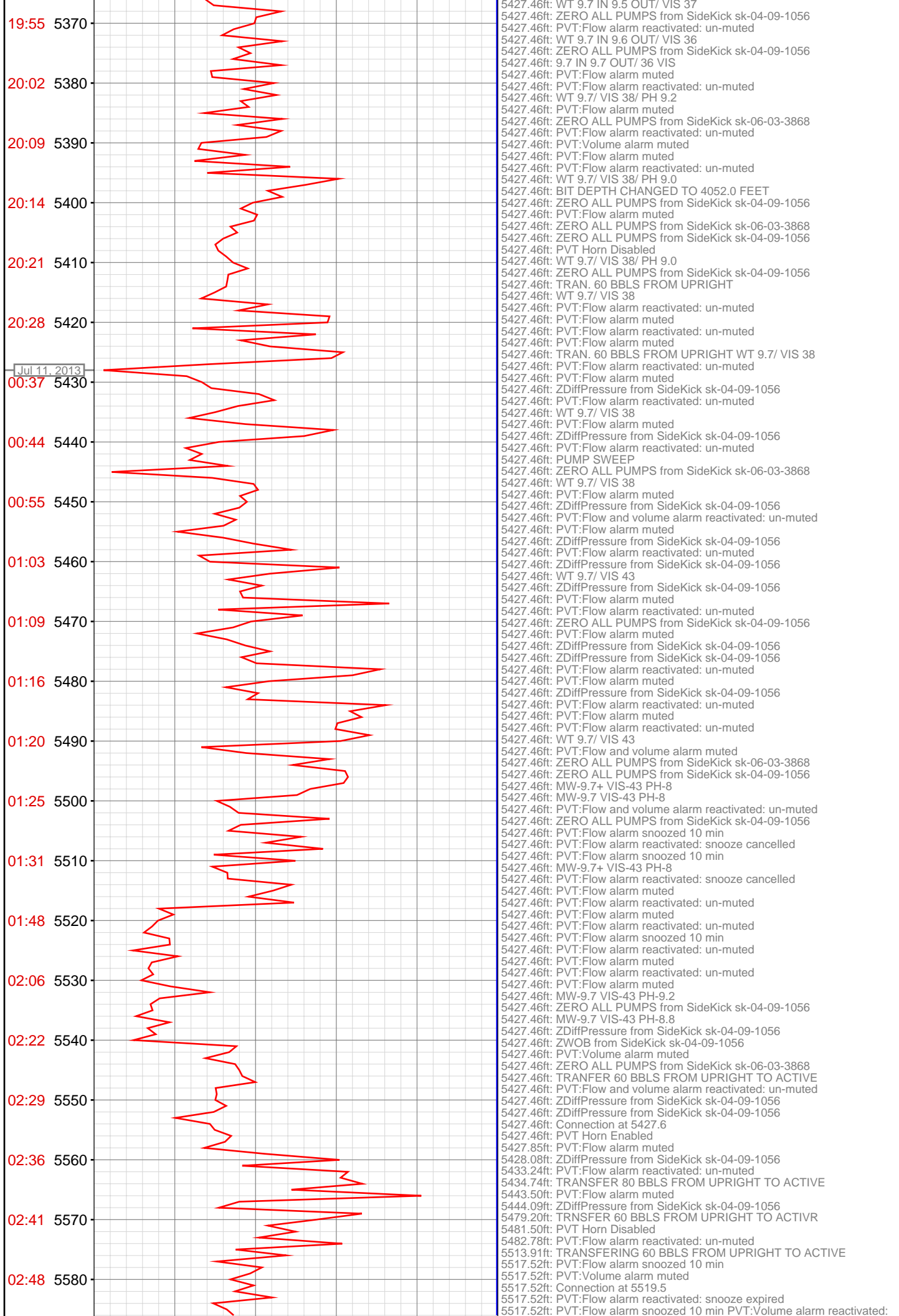
5057.38ft: ZWOB from SideKick sk-04-09-1056
5057.38ft: PVT:Flow alarm muted
5057.38ft: Connection at 5061.2
5057.38ft: SURVEY @ 5006' Inc .9 Azi 269.4
5057.38ft: PVT:Flow alarm reactivated: un-muted
5062.66ft: PVT:Volume alarm reactivated: un-muted

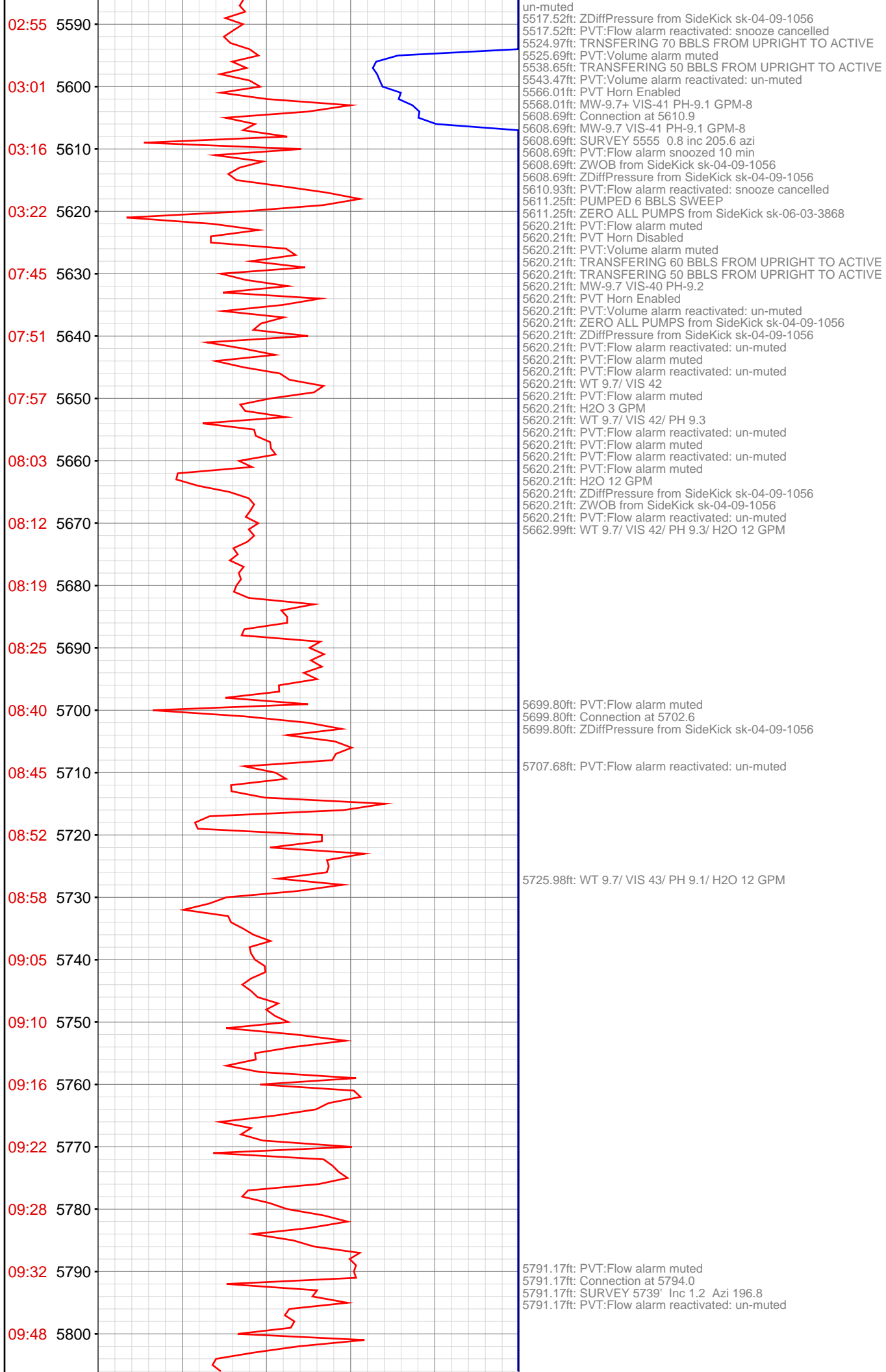
5069.00ft: PUMP SWEEP

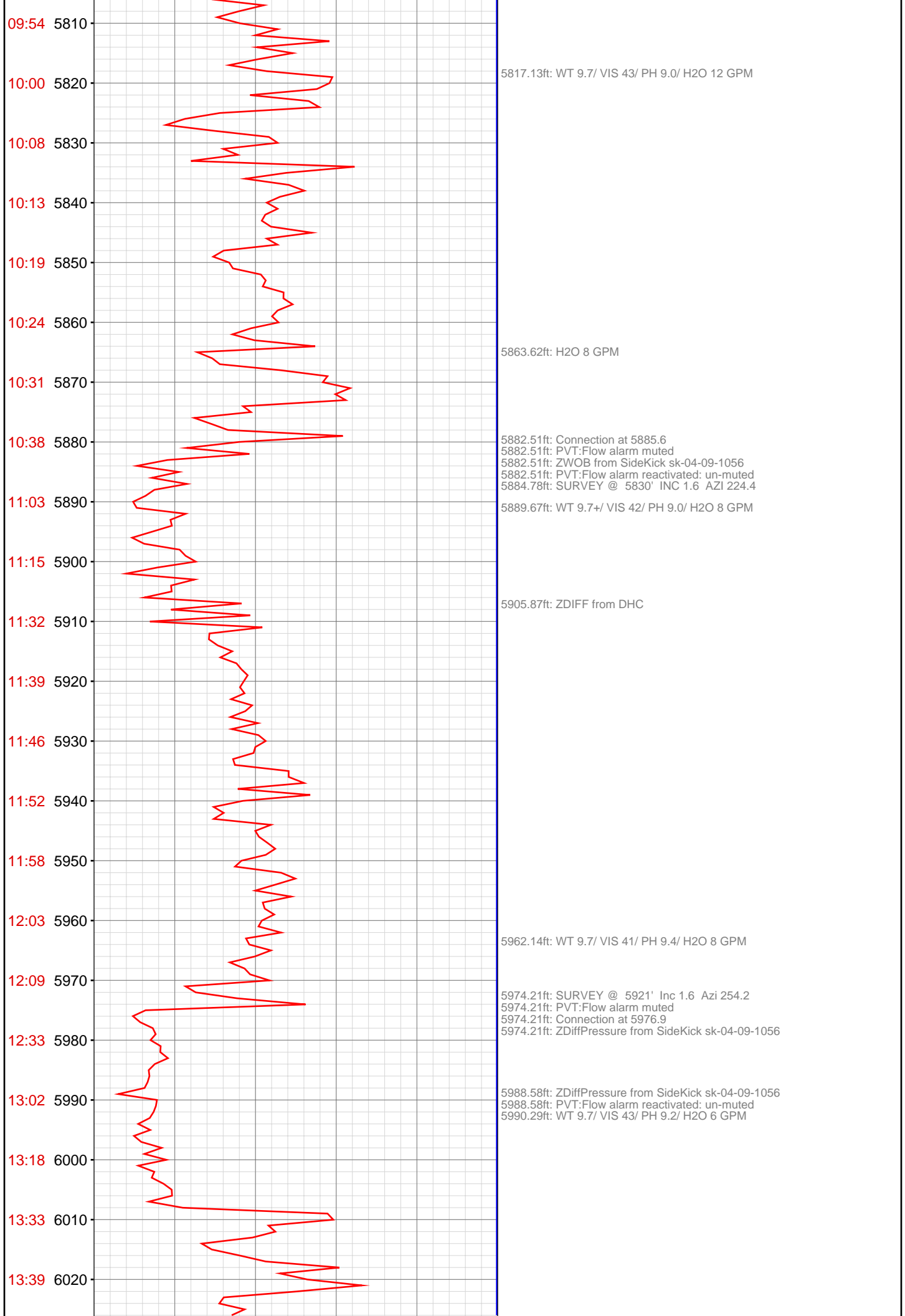
5122.51ft: WT 9.3/ VIS 36/ PH 8.4/ H2O 12 GPM

5148.23ft: PVT:Flow alarm muted









13:46 6030
13:52 6040
13:57 6050
14:04 6060
14:25 6070
14:44 6080
15:01 6090
15:21 6100
15:26 6110
15:33 6120
15:40 6130
15:47 6140
15:53 6150
16:30 6160
16:49 6170
17:33 6180
17:40 6190
17:48 6200
17:55 6210
18:03 6220
18:11 6230
18:17 6240

6065.85ft: WT 9.7/ VIS 43/ PH 9.1/ H2O 6 GPM
6065.85ft: Connection at 6068.3
6065.85ft: ZWOB from SideKick sk-04-09-1056
6065.85ft: PVT:Flow alarm muted
6065.85ft: SURVEY @ 6013 inc. 1.6 az. 287.4
6065.85ft: ZDiffPressure from SideKick sk-04-09-1056
6067.68ft: PVT:Flow alarm reactivated: un-muted

6092.59ft: WT 9.7/ VIS 42/ PH 9.2/ H2O 6 GPM

6144.72ft: MEDICAL EMERGENCY DRILL

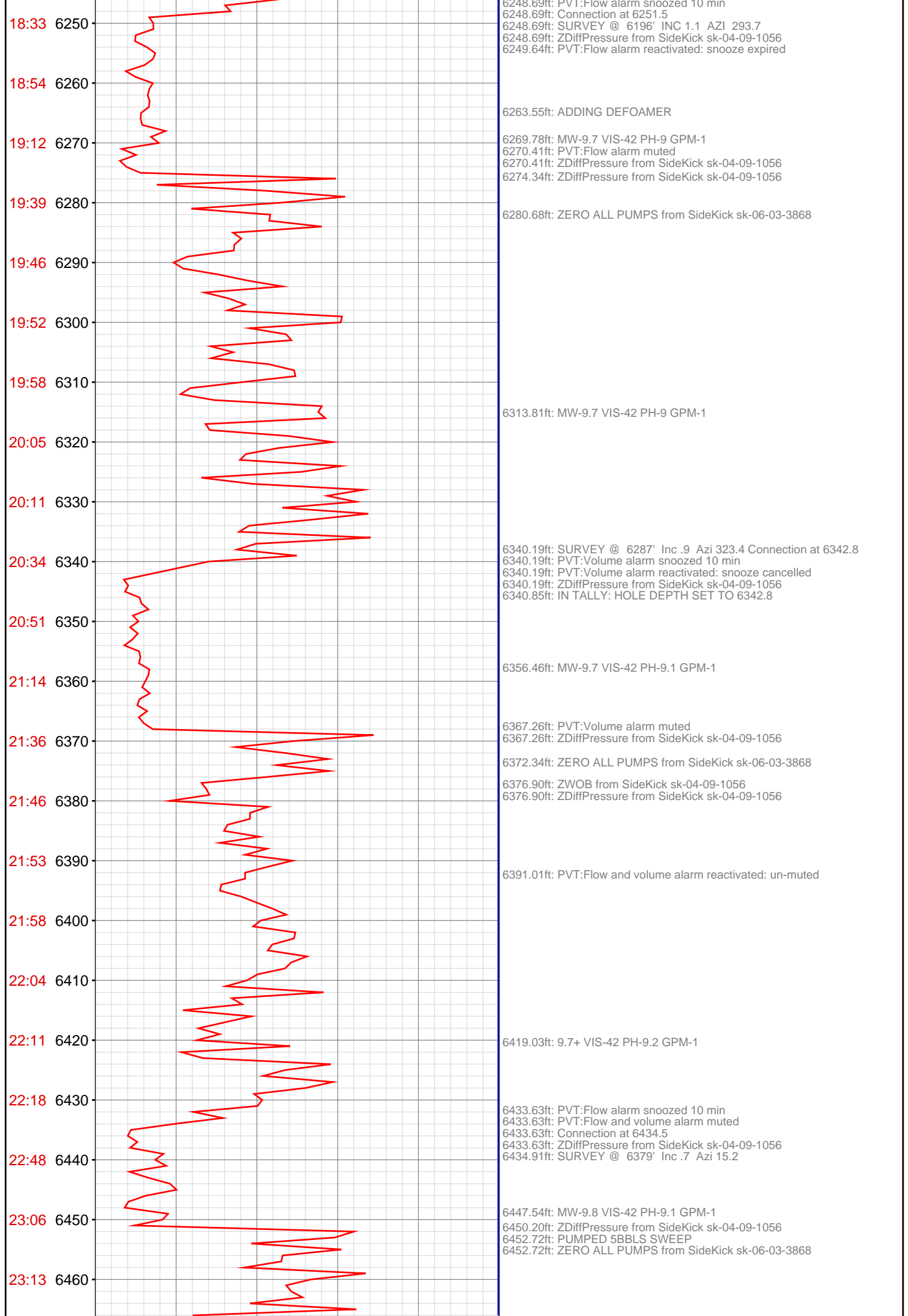
6157.68ft: PVT:Flow alarm muted
6157.68ft: PVT:Flow alarm reactivated: un-muted
6157.68ft: WT 9.7/ VIS 42/ PH 9.2/ H2O 6 GPM
6157.68ft: Connection at 6159.9
6157.68ft: PVT:Flow alarm muted
6157.68ft: ZDiffPressure from SideKick sk-04-09-1056
6160.79ft: PVT:Flow alarm reactivated: un-muted

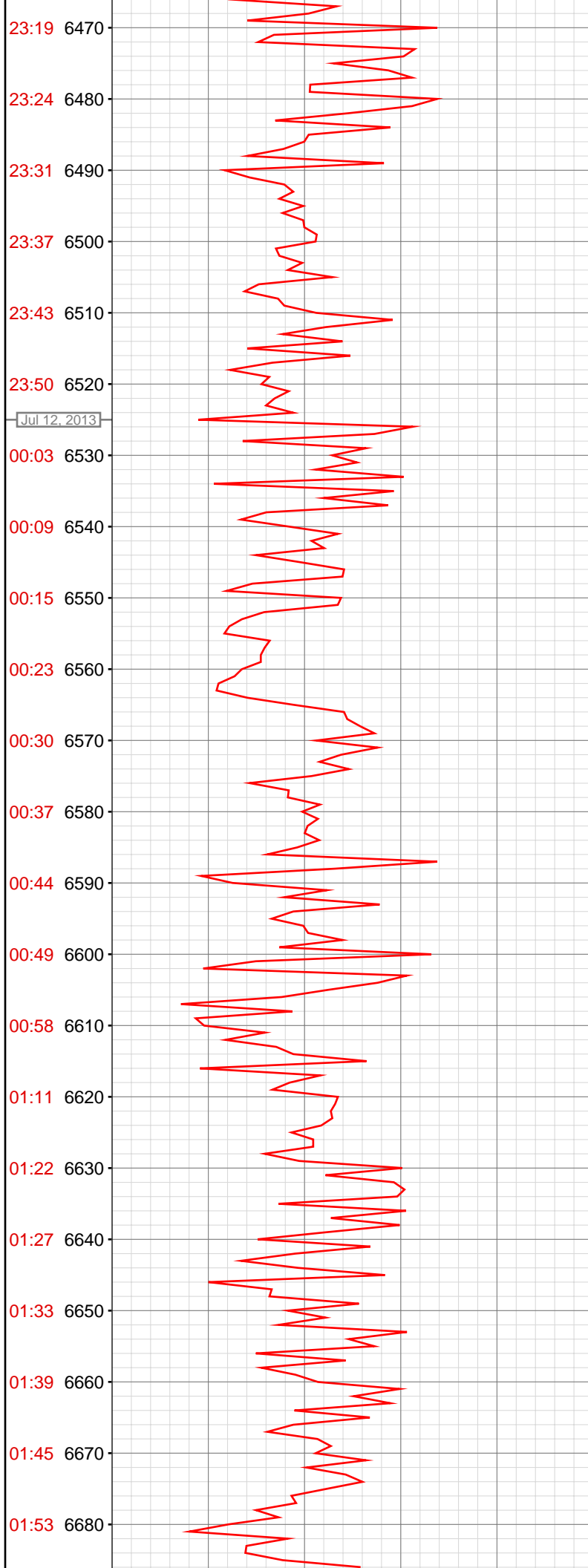
6168.90ft: SURVEY @ 6104 INC 1.1 AZM 297.8

6175.30ft: PVT:Flow alarm muted
6177.49ft: ZDiffPressure from SideKick sk-04-09-1056
6177.49ft: ZDiffPressure from SideKick sk-04-09-1056

6184.12ft: PVT:Flow alarm reactivated: un-muted

6233.40ft: MW-9.7 VIS-42 PH-9.1 GPM-1





6524.51ft: Connection at 6526.1
6524.51ft: ZDiffPressure from SideKick sk-04-09-1056
6524.51ft: ZWOB from SideKick sk-04-09-1056
6526.51ft: SURVEY @ 6471' Inc .7 Azi 26.7
6527.89ft: MW-9.8 VIS-42 PH-9.3 GPM-2
6529.86ft: PUMPED 6 BBLS SWEEP
6530.05ft: ZERO ALL PUMPS from SideKick sk-06-03-3868

6615.39ft: MW-9.8+ VIS-42 PH-9.2 GPM-1
6615.39ft: Connection at 6617.6
6615.39ft: ZDiffPressure from SideKick sk-04-09-1056
6615.39ft: ZWOB from SideKick sk-04-09-1056
6615.52ft: SURVEY @ 6562' Inc .6 Azi 349.6

