



Physical Address: 345 Comanche St.
Mail to: Box 384, Kiowa, CO 80117
Ph. 303-621-8672 - Fax 303-621-7749
www.highprairiesurvey.com

Job # 13118 APC-WAYNE #1-35

Inv # 2694

High Prairie Surveying of Kiowa, Colorado, in accordance with a request from **MULL DRILLING COMPANY**, has determined the location of **APC-WAYNE #1-35** to be **1686 feet FSL**, and **1056 feet FEL**, (90° off Section lines) of **SECTION 35**, Township **16s**, Range **45w** of the 6th Principal Meridian, **Cheyenne County**, Colorado.

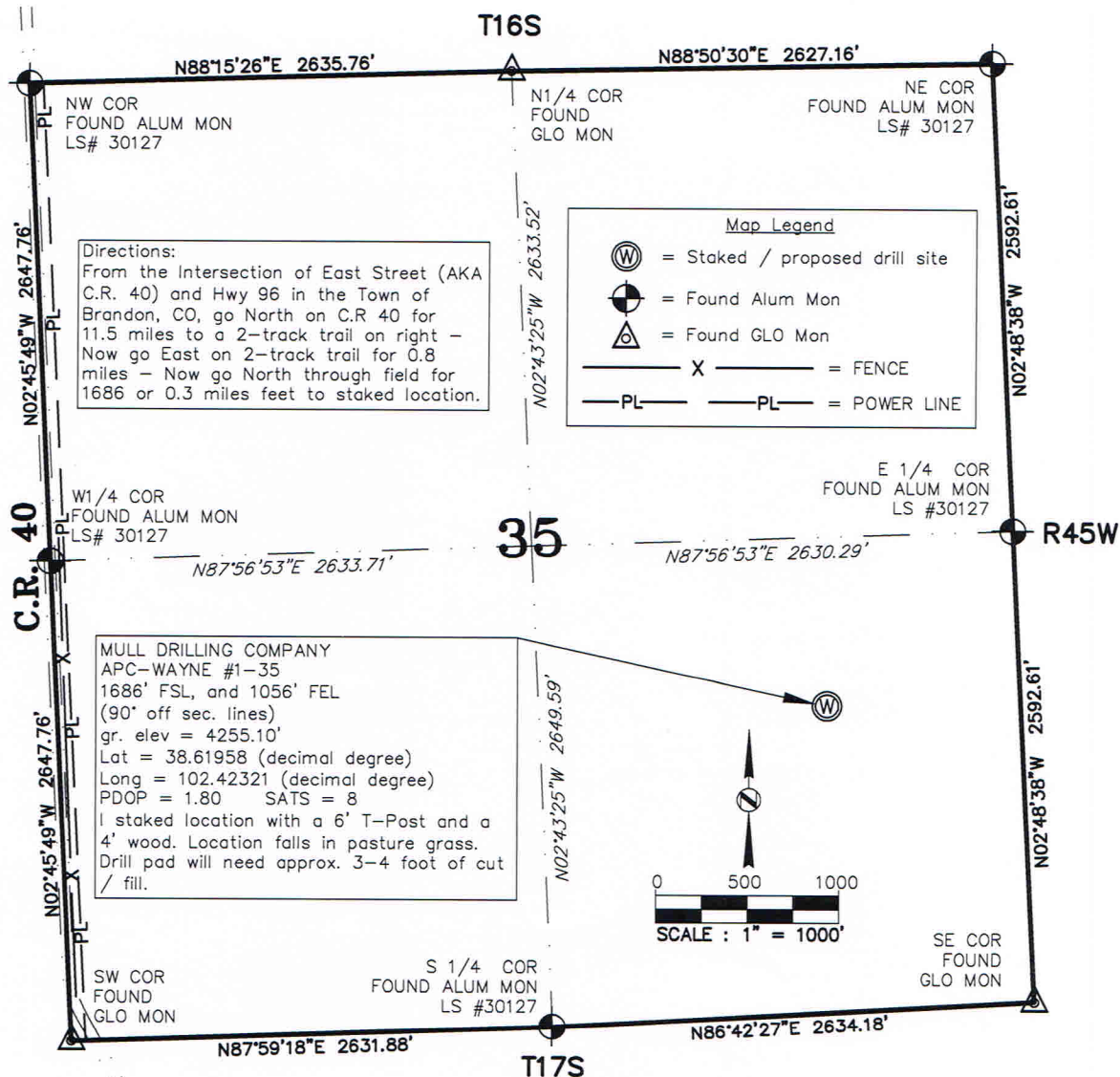
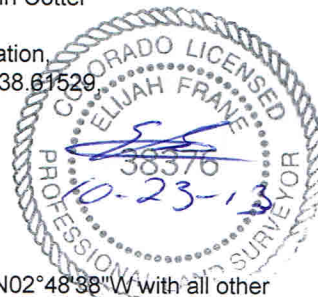
Date: Staked on 09/16/13 Drawn on 09/20/13.

Re: Staked by Elijah Frane
Drawn: Drawn by Dustin Cotter

Basis of Elevation Spot: USGS BM = MARSCHEL, PID = JJ0986, H-Order = GPS Observation,
V-Order = GPS Observation, Stability = A, P-DOP = 3.2, Sats = 8 US NAD 83 CO-C, Lat. = 38.61529
Long. = W102.32736, Elevation = 4195.00 gr. (us FT).

Notes: See Location Drawing for improvements within 500 feet of the proposed well pad.
The ground elevation at staked location = 4255.10' gr.
This drawing does not represent a monumented survey or Land Survey Plat.

Basis of Bearing: Bearings were determined based on the East line of Section 35 to bear N02°48'38"W with all other bearings contained herein relative thereto.





Physical Address: 345 Comanche St.
Mail to: Box 384, Kiowa, CO 80117
Ph. 303-621-8672 - Fax 303-621-7749
www.highprairiesurvey.com

Job # 13118 APC-WAYNE #1-35

Inv # 2694

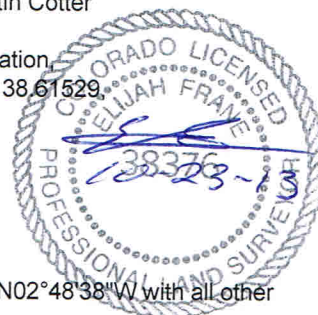
High Prairie Surveying of Kiowa, Colorado, in accordance with a request from **MULL DRILLING COMPANY**, has determined the location of **APC-WAYNE #1-35** to be **1686 feet FSL**, and **1056 feet FEL**, (90° off Section lines) of **SECTION 35**, Township **16s**, Range **45w** of the 6th Principal Meridian, **Cheyenne County**, Colorado.

Date: Staked on 09/16/13 Drawn on 09/20/13.

Re: Staked by Elijah Frane
Drawn: Drawn by Dustin Cotter

Basis of Elevation Spot: USGS BM = MARSCHEL, PID = JJ0986, H-Order = GPS Observation, V-Order = GPS Observation, Stability = A, P-DOP = 3.2, Sats = 8 US NAD 83 CO-C, Lat. = 38.61529, Long. = W102.32736, Elevation = 4195.00 gr. (us FT).

Notes: See Location Drawing for improvements within 500 feet of the proposed well pad.
The ground elevation at staked location = 4255.10' gr.
This drawing does not represent a monumented survey or Land Survey Plat.



Basis of Bearing: Bearings were determined based on the East line of Section 35 to bear N02°48'38"W with all other bearings contained herein relative thereto.

