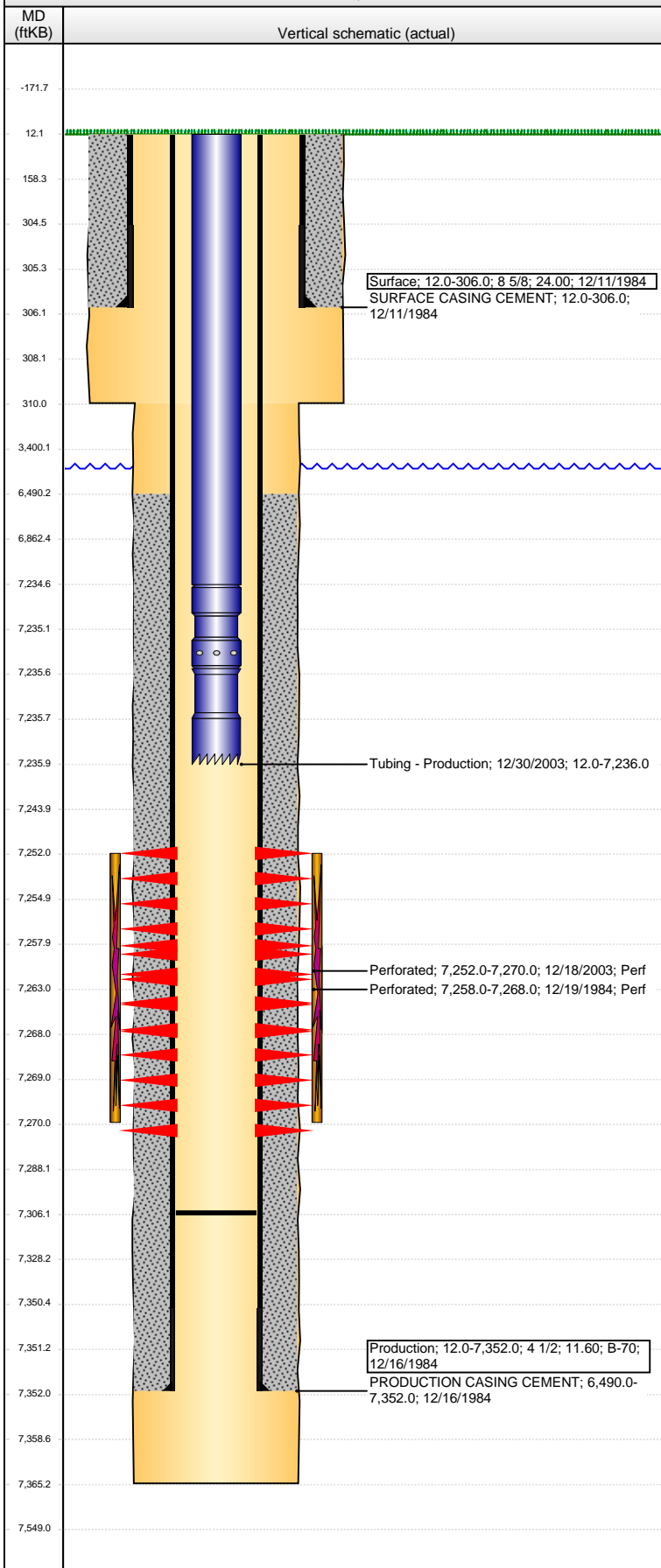


Well Name: JOHNSON 01

VERTICAL - ORIGINAL HOLE, 10/22/2013 2:47:00 PM



## Well Header

API	Business Unit	District	Well Config
05-123-12159	WATTENBERG	15	VERTICAL
Original KB Elevation (ft)	KB - GL / MSL (ftKB)	Spud Date	P & A Date
4,847.00	12.00	12/11/1984	

Comment  
batt 11-16G6 10/02

Directions To Well

## Congressional Location

Quarter 1	Quarter 2	Quarter 3	Quarter 4	Section	Township	Twnshp N...	Range	Rng E/W Dir
		SW	SE	11	6	N	66	W

## Bottom Hole Location

North-South Distance (ft)	From N or S Line	East-West Distance (ft)	From E or W Line

## Plug Back Total Depths

Date	Depth (ftKB)	Method	Com
12/16/1984	7,306.0	TAG	

## Wellbore Sections

Section Des	Size (in)	Act Top (ftKB)	Act Btm (ftKB)
SURFACE	12 1/4	12.0	310.0
PRODUCTION	7 7/8	310.0	7,365.0

## Zone Statuses

Zone Name	Status Date	Status	Job
CODELL	12/28/1984	PR	DRILLING/COMPLETION - ORIGINAL, 12/11/1984 00:00
CODELL	1/6/2004	PR	RE-FRAC, 12/15/2003 00:00

## Casing Strings

### Surface, 306.0ftKB

Casing Description	Run Date	OD (in)	Wt/Len (l...)	Grade	Top (ftKB)	MD (ftKB)
Surface	12/11/1984	8 5/8	24.00		12.0	306.0

### Production, 7,352.0ftKB

Casing Description	Run Date	OD (in)	Wt/Len (l...)	Grade	Top (ftKB)	MD (ftKB)
Production	12/16/1984	4 1/2	11.60	B-70	12.0	7,352.0

## Cement

Description	Top Depth (ftKB)	Bottom Depth (ftKB)
SURFACE CASING CEMENT	12.0	306.0
PRODUCTION CASING CEMENT	6,490.0	7,352.0

## Tubing Components

Item Des	OD (in)	Wt (lb/ft)	Grade	Jts	Len (ft)	Btm (ftKB)	Btm (TVD) (ftKB)
Tubing	2 3/8	4.70	J-55	213	7,222.50	7,234.5	
Pump Seating	2 3/8			1	1.00	7,235.5	
Nipple							
Notched collar	2 3/8			1	0.50	7,236.0	

## Perforation Data

Zone	Bnch/St g	Entered Shot Total	Top (ftKB)	Btm (ftKB)	Date
CODELL, ORIGINAL HOLE		72	7,252.00	7,270.00	12/18/2003
CODELL, ORIGINAL HOLE		30	7,258.00	7,268.00	12/19/1984

## Stimulations & Treatments

Date	Zone	Primary Job Type
12/21/1984	CODELL, ORIGINAL HOLE	DRILLING/COMPLETION - ORIGINAL
Technical Result	Tech Result Details	Tech Result Note

Comment

Date	Zone	Primary Job Type
10/23/2003	CODELL, ORIGINAL HOLE	RE-FRAC
Technical Result	Tech Result Details	Tech Result Note

Comment

## Other In Hole

Run Date	Des	OD (in)	Top (ftKB)	Btm (ftKB)

## Logs

Date	Type	Top (ftKB)	Btm (ftKB)
12/17/1984	COMPENSATED DENSITY	3,700.0	7,346.0
12/17/1984	INDUCTION	306.0	7,350.0

Well Name: JOHNSON 01

VERTICAL - ORIGINAL HOLE, 10/22/2013 2:47:02 PM

## Logs

Date	Type	Top (ftKB)	Btm (ftKB)
12/17/1984	RESERVOIR ANALYSIS	6,950.0	7,350.0
12/17/1984	SPECTAL GAMMA RAY	6,900.0	7,338.0
12/19/1984	CEMENT BOND	4,623.0	7,300.0

