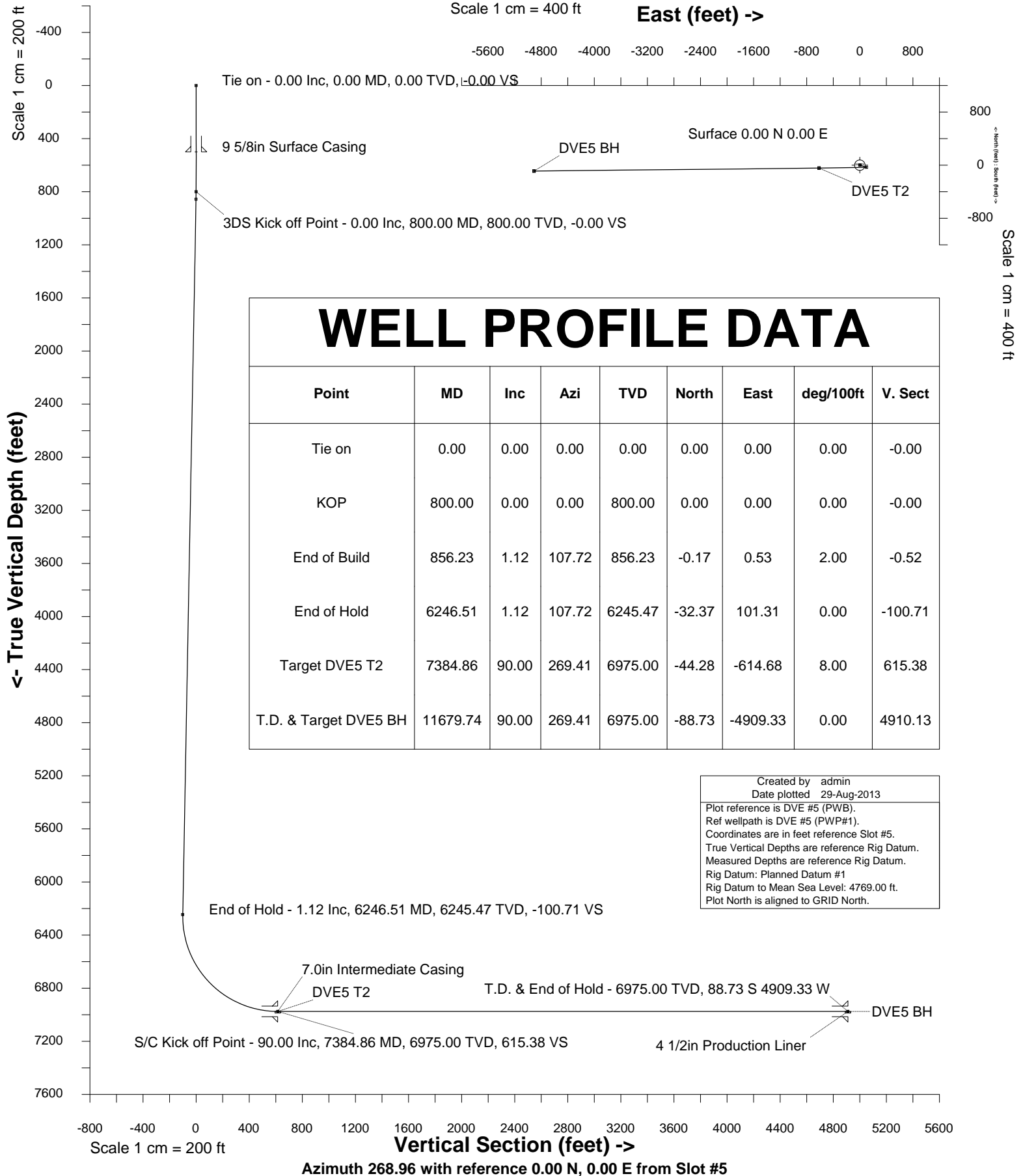


TEKTON WINDSOR, LLC

Location Windsor, CO, USA(Imported)
Field Windsor Project
Installation Diamond Valley East

Slot Slot #5
Well DVE #5
Wellbore DVE #5 (PWB)





INTEGRATED PETROLEUM TECHNOLOGIES, INC
SYSDRILL
Well Design Combined Report
Wellbore: DVE #5 (PWB)

Wellhead Details							
Name	Northing	Easting	Latitude	Longitude	North	East	Elevation Above Inst.
Slot #5	1413801.0000	3175339.0000	40.46757502	-104.86980646	64.00N	0.00E	-0.00

Declination			
Date	Source	Time	
28-Aug-2013	IGRF Model [1900.0-2015.0]	15:21	

Site Details				
Name	Northing	Easting	Coord System Name	North Alignment
Diamond Valley East	1413737.0000	3175339.0000	CO83-NF on NAD83 datum	Grid

Summary Wellpath									
MD[ft]	Inc[deg]	Azi[deg]	TVD[ft]	North[ft]	East[ft]	Dogleg [deg/100ft]	Vertical Section[ft]	Northing	Easting
0.00	0.00	0.000	0.00	0.00N	0.00E		0.00	1413801.00	3175339.00
800.00	0.00	0.000	800.00	0.00N	0.00E	==>	0.00	1413801.00	3175339.00
856.23	1.12	107.720	856.23	0.17S	0.53E	2.00	-0.52	1413800.83	3175339.53
6246.51	1.12	107.720	6245.47	32.37S	101.31E	==>	-100.71	1413768.63	3175440.30
7384.86	90.00	269.410	6975.00	44.28S	614.68W	8.00	615.38	1413756.72	3174724.34
11679.74	90.00	269.410	6975.00	88.73S	4909.33W	==>	4910.13	1413712.28	3170429.86

Interpolated Wellpath									
MD[ft]	Inc[deg]	Azi[deg]	TVD[ft]	North[ft]	East[ft]	Dogleg [deg/100ft]	Vertical Section[ft]	Northing	Easting
0.00	0.00	0.000	0.00	0.00N	0.00E		0.00	1413801.00	3175339.00
100.00	0.00	0.000	100.00	0.00N	0.00E	==>	0.00	1413801.00	3175339.00
200.00	0.00	0.000	200.00	0.00N	0.00E	==>	0.00	1413801.00	3175339.00
300.00	0.00	0.000	300.00	0.00N	0.00E	==>	0.00	1413801.00	3175339.00
400.00	0.00	0.000	400.00	0.00N	0.00E	==>	0.00	1413801.00	3175339.00
500.00	0.00	0.000	500.00	0.00N	0.00E	==>	0.00	1413801.00	3175339.00
600.00	0.00	0.000	600.00	0.00N	0.00E	==>	0.00	1413801.00	3175339.00
700.00	0.00	0.000	700.00	0.00N	0.00E	==>	0.00	1413801.00	3175339.00
800.00	0.00	0.000	800.00	0.00N	0.00E	==>	0.00	1413801.00	3175339.00
856.23	1.12	107.720	856.23	0.17S	0.53E	2.00	-0.52	1413800.83	3175339.53
900.00	1.12	107.720	899.99	0.43S	1.34E	==>	-1.34	1413800.57	3175340.34
1000.00	1.12	107.720	999.97	1.03S	3.21E	==>	-3.19	1413799.97	3175342.21
1100.00	1.12	107.720	1099.95	1.62S	5.08E	==>	-5.05	1413799.38	3175344.08
1200.00	1.12	107.720	1199.93	2.22S	6.95E	==>	-6.91	1413798.78	3175345.95
1300.00	1.12	107.720	1299.91	2.82S	8.82E	==>	-8.77	1413798.18	3175347.82
1400.00	1.12	107.720	1399.89	3.42S	10.69E	==>	-10.63	1413797.58	3175349.69
1500.00	1.12	107.720	1499.87	4.01S	12.56E	==>	-12.49	1413796.99	3175351.56
1600.00	1.12	107.720	1599.85	4.61S	14.43E	==>	-14.35	1413796.39	3175353.43
1700.00	1.12	107.720	1699.83	5.21S	16.30E	==>	-16.20	1413795.79	3175355.30
1800.00	1.12	107.720	1799.81	5.81S	18.17E	==>	-18.06	1413795.19	3175357.17
1900.00	1.12	107.720	1899.80	6.40S	20.04E	==>	-19.92	1413794.60	3175359.04
2000.00	1.12	107.720	1999.78	7.00S	21.91E	==>	-21.78	1413794.00	3175360.91
2100.00	1.12	107.720	2099.76	7.60S	23.78E	==>	-23.64	1413793.40	3175362.78
2200.00	1.12	107.720	2199.74	8.20S	25.65E	==>	-25.50	1413792.80	3175364.65
2300.00	1.12	107.720	2299.72	8.79S	27.52E	==>	-27.36	1413792.21	3175366.52
2400.00	1.12	107.720	2399.70	9.39S	29.39E	==>	-29.21	1413791.61	3175368.39
2500.00	1.12	107.720	2499.68	9.99S	31.26E	==>	-31.07	1413791.01	3175370.26
2600.00	1.12	107.720	2599.66	10.59S	33.13E	==>	-32.93	1413790.41	3175372.13
2700.00	1.12	107.720	2699.64	11.18S	35.00E	==>	-34.79	1413789.82	3175374.00
2800.00	1.12	107.720	2799.62	11.78S	36.87E	==>	-36.65	1413789.22	3175375.87
2900.00	1.12	107.720	2899.60	12.38S	38.74E	==>	-38.51	1413788.62	3175377.74
3000.00	1.12	107.720	2999.58	12.98S	40.61E	==>	-40.37	1413788.02	3175379.61
3100.00	1.12	107.720	3099.56	13.57S	42.48E	==>	-42.22	1413787.43	3175381.48
3200.00	1.12	107.720	3199.54	14.17S	44.35E	==>	-44.08	1413786.83	3175383.34
3300.00	1.12	107.720	3299.53	14.77S	46.22E	==>	-45.94	1413786.23	3175385.21
3400.00	1.12	107.720	3399.51	15.37S	48.09E	==>	-47.80	1413785.63	3175387.08
3500.00	1.12	107.720	3499.49	15.96S	49.96E	==>	-49.66	1413785.04	3175388.95
3600.00	1.12	107.720	3599.47	16.56S	51.83E	==>	-51.52	1413784.44	3175390.82
3700.00	1.12	107.720	3699.45	17.16S	53.69E	==>	-53.38	1413783.84	3175392.69

All data is in Feet unless otherwise stated
Coordinates are from Slot MD's are from Rig and TVD's are from Rig (Planned Datum #1 4769.0ft above Mean Sea Level)
Vertical Section is from 0.00N 0.00E on azimuth 268.960 degrees
Bottom hole distance is 4910.13 Feet on azimuth 268.96 degrees from Wellhead
Calculation method uses Minimum Curvature method
Prepared by Integrated Petroleum Technologies, Inc.
Date Printed: 29-Aug-2013



INTEGRATED PETROLEUM TECHNOLOGIES, INC
SYSDRILL
Well Design Combined Report
Wellbore: DVE #5 (PWB)

Interpolated Wellpath									
MD[ft]	Inc[deg]	Azi[deg]	TVD[ft]	North[ft]	East[ft]	Dogleg [deg/100ft]	Vertical Section[ft]	Northing	Easting
3800.00	1.12	107.720	3799.43	17.76S	55.56E	==>	-55.23	1413783.24	3175394.56
3900.00	1.12	107.720	3899.41	18.35S	57.43E	==>	-57.09	1413782.65	3175396.43
4000.00	1.12	107.720	3999.39	18.95S	59.30E	==>	-58.95	1413782.05	3175398.30
4100.00	1.12	107.720	4099.37	19.55S	61.17E	==>	-60.81	1413781.45	3175400.17
4200.00	1.12	107.720	4199.35	20.15S	63.04E	==>	-62.67	1413780.85	3175402.04
4300.00	1.12	107.720	4299.33	20.74S	64.91E	==>	-64.53	1413780.26	3175403.91
4400.00	1.12	107.720	4399.31	21.34S	66.78E	==>	-66.39	1413779.66	3175405.78
4500.00	1.12	107.720	4499.29	21.94S	68.65E	==>	-68.24	1413779.06	3175407.65
4600.00	1.12	107.720	4599.28	22.54S	70.52E	==>	-70.10	1413778.46	3175409.52
4700.00	1.12	107.720	4699.26	23.13S	72.39E	==>	-71.96	1413777.87	3175411.39
4800.00	1.12	107.720	4799.24	23.73S	74.26E	==>	-73.82	1413777.27	3175413.26
4900.00	1.12	107.720	4899.22	24.33S	76.13E	==>	-75.68	1413776.67	3175415.13
5000.00	1.12	107.720	4999.20	24.93S	78.00E	==>	-77.54	1413776.07	3175417.00
5100.00	1.12	107.720	5099.18	25.52S	79.87E	==>	-79.40	1413775.48	3175418.87
5200.00	1.12	107.720	5199.16	26.12S	81.74E	==>	-81.25	1413774.88	3175420.74
5300.00	1.12	107.720	5299.14	26.72S	83.61E	==>	-83.11	1413774.28	3175422.61
5400.00	1.12	107.720	5399.12	27.32S	85.48E	==>	-84.97	1413773.68	3175424.48
5500.00	1.12	107.720	5499.10	27.91S	87.35E	==>	-86.83	1413773.09	3175426.35
5600.00	1.12	107.720	5599.08	28.51S	89.22E	==>	-88.69	1413772.49	3175428.22
5700.00	1.12	107.720	5699.06	29.11S	91.09E	==>	-90.55	1413771.89	3175430.09
5800.00	1.12	107.720	5799.04	29.71S	92.96E	==>	-92.41	1413771.29	3175431.95
5900.00	1.12	107.720	5899.02	30.30S	94.83E	==>	-94.26	1413770.70	3175433.82
6000.00	1.12	107.720	5999.01	30.90S	96.70E	==>	-96.12	1413770.10	3175435.69
6100.00	1.12	107.720	6098.99	31.50S	98.57E	==>	-97.98	1413769.50	3175437.56
6200.00	1.12	107.720	6198.97	32.10S	100.44E	==>	-99.84	1413768.90	3175439.43
6246.51	1.12	107.720	6245.47	32.37S	101.31E	==>	-100.71	1413768.63	3175440.30
6300.00	3.23	263.130	6298.94	32.71S	100.31E	8.00	-99.70	1413768.29	3175439.31
6400.00	11.22	267.620	6398.06	33.46S	87.77E	8.00	-87.16	1413767.55	3175426.77
6500.00	19.21	268.390	6494.48	34.32S	61.57E	8.00	-60.94	1413766.68	3175400.56
6600.00	27.21	268.720	6586.31	35.30S	22.19E	8.00	-21.55	1413765.71	3175361.19
6700.00	35.21	268.910	6671.76	36.36S	29.58W	8.00	30.23	1413764.64	3175309.42
6800.00	43.21	269.030	6749.18	37.49S	92.73W	8.00	93.40	1413763.51	3175246.27
6900.00	51.21	269.120	6817.05	38.67S	166.05W	8.00	166.72	1413762.33	3175172.95
7000.00	59.21	269.200	6874.06	39.87S	248.10W	8.00	248.78	1413761.13	3175090.90
7100.00	67.21	269.260	6919.09	41.07S	337.29W	8.00	337.98	1413759.93	3175001.72
7200.00	75.21	269.310	6951.28	42.25S	431.88W	8.00	432.57	1413758.76	3174907.14
7300.00	83.21	269.370	6969.98	43.38S	530.03W	8.00	530.72	1413757.62	3174808.99
7384.86	90.00	269.410	6975.00	44.28S	614.68W	8.00	615.38	1413756.72	3174724.34
7400.00	90.00	269.410	6975.00	44.44S	629.82W	==>	630.52	1413756.56	3174709.20
7500.00	90.00	269.410	6975.00	45.48S	729.82W	==>	730.52	1413755.53	3174609.21
7600.00	90.00	269.410	6975.00	46.51S	829.81W	==>	830.52	1413754.49	3174509.22
7700.00	90.00	269.410	6975.00	47.55S	929.81W	==>	930.51	1413753.46	3174409.23
7800.00	90.00	269.410	6975.00	48.58S	1029.80W	==>	1030.51	1413752.42	3174309.24
7900.00	90.00	269.410	6975.00	49.62S	1129.79W	==>	1130.51	1413751.39	3174209.25
8000.00	90.00	269.410	6975.00	50.65S	1229.79W	==>	1230.50	1413750.35	3174109.26
8100.00	90.00	269.410	6975.00	51.68S	1329.78W	==>	1330.50	1413749.32	3174009.27
8200.00	90.00	269.410	6975.00	52.72S	1429.78W	==>	1430.50	1413748.28	3173909.28
8300.00	90.00	269.410	6975.00	53.75S	1529.77W	==>	1530.49	1413747.25	3173809.29
8400.00	90.00	269.410	6975.00	54.79S	1629.77W	==>	1630.49	1413746.21	3173709.29
8500.00	90.00	269.410	6975.00	55.82S	1729.76W	==>	1730.49	1413745.18	3173609.30
8600.00	90.00	269.410	6975.00	56.86S	1829.76W	==>	1830.49	1413744.14	3173509.31
8700.00	90.00	269.410	6975.00	57.89S	1929.75W	==>	1930.48	1413743.11	3173409.32
8800.00	90.00	269.410	6975.00	58.93S	2029.75W	==>	2030.48	1413742.07	3173309.33
8900.00	90.00	269.410	6975.00	59.96S	2129.74W	==>	2130.48	1413741.04	3173209.34
9000.00	90.00	269.410	6975.00	61.00S	2229.74W	==>	2230.47	1413740.00	3173109.35
9100.00	90.00	269.410	6975.00	62.03S	2329.73W	==>	2330.47	1413738.97	3173009.36
9200.00	90.00	269.410	6975.00	63.07S	2429.72W	==>	2430.47	1413737.93	3172909.37
9300.00	90.00	269.410	6975.00	64.10S	2529.72W	==>	2530.46	1413736.90	3172809.38
9400.00	90.00	269.410	6975.00	65.14S	2629.71W	==>	2630.46	1413735.87	3172709.39
9500.00	90.00	269.410	6975.00	66.17S	2729.71W	==>	2730.46	1413734.83	3172609.40
9600.00	90.00	269.410	6975.00	67.21S	2829.70W	==>	2830.46	1413733.80	3172509.40

All data is in Feet unless otherwise stated
Coordinates are from Slot MD's are from Rig and TVD's are from Rig (Planned Datum #1 4769.0ft above Mean Sea Level)
Vertical Section is from 0.00N 0.00E on azimuth 268.960 degrees
Bottom hole distance is 4910.13 Feet on azimuth 268.96 degrees from Wellhead
Calculation method uses Minimum Curvature method
Prepared by Integrated Petroleum Technologies, Inc.
Date Printed: 29-Aug-2013



INTEGRATED PETROLEUM TECHNOLOGIES, INC
SYSDRILL
Well Design Combined Report
Wellbore: DVE #5 (PWB)

Interpolated Wellpath									
MD[ft]	Inc[deg]	Azi[deg]	TVD[ft]	North[ft]	East[ft]	Dogleg [deg/100ft]	Vertical Section[ft]	Northing	Easting
9700.00	90.00	269.410	6975.00	68.24S	2929.70W	==>	2930.45	1413732.76	3172409.41
9800.00	90.00	269.410	6975.00	69.28S	3029.69W	==>	3030.45	1413731.73	3172309.42
9900.00	90.00	269.410	6975.00	70.31S	3129.69W	==>	3130.45	1413730.69	3172209.43
10000.00	90.00	269.410	6975.00	71.35S	3229.68W	==>	3230.44	1413729.66	3172109.44
10100.00	90.00	269.410	6975.00	72.38S	3329.68W	==>	3330.44	1413728.62	3172009.45
10200.00	90.00	269.410	6975.00	73.42S	3429.67W	==>	3430.44	1413727.59	3171909.46
10300.00	90.00	269.410	6975.00	74.45S	3529.67W	==>	3530.43	1413726.55	3171809.47
10400.00	90.00	269.410	6975.00	75.49S	3629.66W	==>	3630.43	1413725.52	3171709.48
10500.00	90.00	269.410	6975.00	76.52S	3729.66W	==>	3730.43	1413724.48	3171609.49
10600.00	90.00	269.410	6975.00	77.56S	3829.65W	==>	3830.43	1413723.45	3171509.50
10700.00	90.00	269.410	6975.00	78.59S	3929.64W	==>	3930.42	1413722.41	3171409.50
10800.00	90.00	269.410	6975.00	79.62S	4029.64W	==>	4030.42	1413721.38	3171309.51
10900.00	90.00	269.410	6975.00	80.66S	4129.63W	==>	4130.42	1413720.34	3171209.52
11000.00	90.00	269.410	6975.00	81.69S	4229.63W	==>	4230.41	1413719.31	3171109.53
11100.00	90.00	269.410	6975.00	82.73S	4329.62W	==>	4330.41	1413718.27	3171009.54
11200.00	90.00	269.410	6975.00	83.76S	4429.62W	==>	4430.41	1413717.24	3170909.55
11300.00	90.00	269.410	6975.00	84.80S	4529.61W	==>	4530.41	1413716.20	3170809.56
11400.00	90.00	269.410	6975.00	85.83S	4629.61W	==>	4630.40	1413715.17	3170709.57
11500.00	90.00	269.410	6975.00	86.87S	4729.60W	==>	4730.40	1413714.13	3170609.58
11600.00	90.00	269.410	6975.00	87.90S	4829.60W	==>	4830.40	1413713.10	3170509.59
11679.74	90.00	269.410	6975.00	88.73S	4909.33W	==>	4910.13	1413712.28	3170429.86

All data is in Feet unless otherwise stated
Coordinates are from Slot MD's are from Rig and TVD's are from Rig (Planned Datum #1 4769.0ft above Mean Sea Level)
Vertical Section is from 0.00N 0.00E on azimuth 268.960 degrees
Bottom hole distance is 4910.13 Feet on azimuth 268.96 degrees from Wellhead
Calculation method uses Minimum Curvature method
Prepared by Integrated Petroleum Technologies, Inc.
Date Printed: 29-Aug-2013



INTEGRATED PETROLEUM TECHNOLOGIES, INC
SYSDRILL
Well Design Combined Report
Wellbore: DVE #5 (PWB)

Hole Sections								
Diameter [in]	Start MD[ft]	Start TVD[ft]	Start North[ft]	Start East[ft]	End MD[ft]	End TVD[ft]	End North[ft]	End East[ft]
12 1/4	0.00	0.00	0.00N	0.00E	500.00	500.00	0.00N	0.00E
8 3/4	500.00	500.00	0.00N	0.00E	7384.00	6975.00	44.28S	613.82W
6 1/8	7384.00	6975.00	44.28S	613.82W	11679.74	6975.00	88.73S	4909.33W

Casings								
Name	Top MD[ft]	Top TVD[ft]	Top North[ft]	Top East[ft]	Shoe MD[ft]	Shoe TVD[ft]	Shoe North[ft]	Shoe East[ft]
9 5/8in Surface Casing	0.00	0.00	0.00N	0.00E	500.00	500.00	0.00N	0.00E
7.0in Intermediate Casing	0.00	0.00	0.00N	0.00E	7384.00	6975.00	44.28S	613.82W
4 1/2in Production Liner	6245.00	6243.96	32.37S	101.28E	11679.74	6975.00	88.73S	4909.33W

Targets								
Name	North[ft]	East[ft]	TVD[ft]	Latitude	Longitude	Northing	Easting	Last Revised
DVE5 BH	88.73S	4909.33W	6975.00	40.46742591	-104.88745226	1413712.28	3170429.86	8-Mar-2013
DVE5 T2	44.28S	614.68W	6975.00	40.46746544	-104.87201668	1413756.72	3174724.34	8-Mar-2013

Survey Tool Program						
Reference	Survey Name	MD[ft]	TVD[ft]	Survey Tool	Error Model	
61478	Planned	11679.74	6975.00	WdW Rate Gyro	Standard	

Notes

All data is in Feet unless otherwise stated
Coordinates are from Slot MD's are from Rig and TVD's are from Rig (Planned Datum #1 4769.0ft above Mean Sea Level)
Vertical Section is from 0.00N 0.00E on azimuth 268.960 degrees
Bottom hole distance is 4910.13 Feet on azimuth 268.96 degrees from Wellhead
Calculation method uses Minimum Curvature method
Prepared by Integrated Petroleum Technologies, Inc.
Date Printed: 29-Aug-2013



SYSDRILL
Closest Approach + Clearance Factor Summary Report
Wellbore: DVE #5 (PWB)

Ellipse separations are reported ONLY if BOTH wells have uncertainty data
Only Depth and Magnetic Reference Field error terms are correlated across tie points
Proximities beyond 2500.00ft with expansion rate of 0.00ft/1000ft are not reported
Scan limit is calculated on CENTRE to CENTRE distance

Summary data uses Closest Approach clearance calculation for all minima
Hole size/Casings ARE included
Hole size/Casings are NOT subtracted from Centre-Centre distance
Confidence limit of 95.00% / 2.80 SD.

Wellbore		
Name	Created	Last Revised
DVE #5 (PWB)	28-Aug-2013	29-Aug-2013

Well		
Name	Government ID	Last Revised
DVE #5		28-Aug-2013

Slot						
Name	Grid Northing	Grid Easting	Latitude	Longitude	North	East
Slot #5	1413801.0000	3175339.0000	40.46757502	-104.86980646	64.00N	0.00E

Installation				
Name	Easting	Northing	Coord System Name	North Alignment
Diamond Valley East	3175339.0000	1413737.0000	CO83-NF on NORTH AMERICAN DATUM 1983 datum	Grid

Field				
Name	Easting	Northing	Coord System Name	North Alignment
Windsor Project	3162710.0707	1407271.6545	CO83-NF on NORTH AMERICAN DATUM 1983 datum	Grid

Clearance Summary										
Offset WellName	Offset Wellbore	Offset Slot	Offset Structure	Separation [ft]	MD[ft]	Diverging From[ft]	Ellipse Separation [ft]	Ellipse MD[ft]	Clearance Factor	Clearance MD[ft]
DVE #4	DVE #4 (PWB)	Slot #4	Diamond Valley East	16.00	800.00	11679.74	14.06	800.00	3.44	11679.74
DVE #6	DVE #6 (PWB)	Slot #6	Diamond Valley East	16.00	800.00	11677.75	14.06	800.00	3.49	11679.74
DVE #3	DVE #3 (PWB)	Slot #3	Diamond Valley East	32.00	800.01	11679.74	30.06	800.01	3.71	11679.74
DVE #7	DVE #7 (PWB)	Slot #7	Diamond Valley East	32.00	800.00	800.00	30.06	800.00	6.13	11679.74
DVE #2	DVE #2 (PWB)	Slot #2	Diamond Valley East	48.00	800.01	800.01	46.06	800.01	7.43	11679.74
DVE #8	DVE #8 (PWB)	Slot #8	Diamond Valley East	48.00	800.00	800.00	46.06	800.00	7.43	11679.74
DVE #1	DVE #1 (PWB)	Slot #1	Diamond Valley East	64.00	800.01	800.01	62.06	800.01	9.62	11679.74
DVE #9	DVE #9 (PWB)	Slot #9	Diamond Valley East	64.00	800.00	800.00	62.06	800.00	11.14	11679.74
DIAMOND VALLEY SW #3	DIAMOND VALLEY SW #3 REV	Slot #3	Diamond Valley SW	73.33	11679.74	11679.74	52.05	11679.74	3.45	11679.74
DVE #10	DVE #10 (PWB)	Slot #10	Diamond Valley East	80.00	800.00	7384.86	78.06	800.00	13.24	11679.74
DVE #11	DVE #11 (PWB)	Slot #11	Diamond Valley East	96.00	800.00	800.00	94.06	800.00	14.84	11679.74
DVE #12	DVE #12 (PWB)	Slot #12	Diamond Valley East	112.00	800.00	800.00	110.06	800.00	18.54	11679.74

All data is in Feet unless otherwise stated
Coordinates are from Slot MD's are from Rig and TVD's are from Rig (Planned Datum #1 4769.0ft above Mean Sea Level)
Vertical Section is from 0.00N 0.00E on azimuth 268.960 degrees
Prepared by Integrated Petroleum Technologies, Inc.
Date Printed: 29-Aug-2013



SYSDRILL
Closest Approach + Clearance Factor Summary Report
Wellbore: DVE #5 (PWB)

Clearance Summary										
Offset WellName	Offset Wellbore	Offset Slot	Offset Structure	Separation [ft]	MD[ft]	Diverging From[ft]	Ellipse Separation [ft]	Ellipse MD[ft]	Clearance Factor	Clearance MD[ft]
DVE #13	DVE #13 (PWB)	Slot #13	Diamond Valley East	128.00	800.00	11668.12	126.06	800.00	20.48	11679.74
DIAMOND VALLEY SW #2	DIAMOND VALLEY SW #2 REV	Slot #2	Diamond Valley SW	166.63	11540.07	11540.07	108.25	11548.56	2.85	11548.56
Altergott #1	Altergott #1 (AWB)	Altergott #1	DVE Offset	196.19	8924.02	8924.02	169.58	8924.02	7.37	8940.29
DIAMOND VALLEY SW #4	DIAMOND VALLEY SW #4 REV	Slot #4	Diamond Valley SW	331.52	11679.74	11679.74	272.09	11679.74	5.58	11679.74
DIAMOND VALLEY SW #1	DIAMOND VALLEY SW #1 REV	Slot #1	Diamond Valley SW	336.17	11679.74	11679.74	276.28	11679.74	5.61	11679.74
DIAMOND VALLEY SW #5	DIAMOND VALLEY SW #5 REV	Slot #5	Diamond Valley SW	475.41	11475.50	11475.50	418.16	11499.34	8.19	11581.36
DIAMOND VALLEY SW #6	DIAMOND VALLEY SW #6 REV	Slot #6	Diamond Valley SW	628.28	11582.29	11582.29	569.98	11614.17	10.53	11679.74
Kodak #1	Kodak #1	Slot #1	Kodak	845.13	11679.74	11679.74	793.21	11679.74	16.28	11679.74
Kodak #2	Kodak #2	Slot #2	Kodak	955.30	11679.74	11679.74	901.21	11679.74	17.66	11679.74
DIAMOND VALLEY SW #7	DIAMOND VALLEY SW #7 REV	Slot #7	Diamond Valley SW	974.83	11534.69	11534.69	916.69	11581.36	16.19	11679.74
DIAMOND VALLEY SW #8	DIAMOND VALLEY SW #8 REV	Slot #8	Diamond Valley SW	1102.25	11348.18	11348.18	1047.51	11368.11	18.90	11679.74
Kodak #3	Kodak #3	Slot #3	Kodak	1127.51	11679.74	11679.74	1073.99	11679.74	21.07	11679.74
DIAMOND VALLEY SW #9	DIAMOND VALLEY SW #9 REV	Slot #9	Diamond Valley SW	1288.62	11417.32	11417.32	1232.85	11466.54	21.59	11679.74
Kodak #4	Kodak #4	Slot #4	Kodak	1425.22	11679.74	11679.74	1371.38	11679.74	26.47	11679.74
W Great Western #27-21	W Great Western #27-21 (AWB)	Great Western #27-21	Great Western 66N67W	1456.56	10212.33	10212.33	1424.70	10219.82	43.96	10515.09
W Great Western #27-11	W Great Western #27-11 (AWB)	Great Western #27-11	Great Western 66N67W	1484.27	11536.96	11536.96	1440.83	11548.56	33.53	11679.74
Kodak #5	Kodak #5	Slot #5	Kodak	1558.60	11679.74	11679.74	1504.45	11679.74	28.78	11679.74
Kodak #6	Kodak #6	Slot #6	Kodak	1730.40	11679.74	11679.74	1676.57	11679.74	32.15	11679.74
Kodak #7	Kodak #7	Slot #7	Kodak	2038.64	11679.74	11679.74	1984.99	11679.74	38.00	11679.74
W Great Western #27-52	W Great Western #27-52 (AWB)	Great Western #27-52	Great Western 66N67W	2149.58	10875.98	10875.98	2111.93	10892.39	53.84	11400.92
Kodak #8	Kodak #8	Slot #8	Kodak	2176.35	11679.74	11679.74	2122.77	11679.74	40.62	11679.74
Kodak #9	Kodak #9	Slot #9	Kodak	2348.61	11679.74	11679.74	2295.20	11679.74	43.97	11679.74

All data is in Feet unless otherwise stated
Coordinates are from Slot MD's are from Rig and TVD's are from Rig (Planned Datum #1 4769.0ft above Mean Sea Level)
Vertical Section is from 0.00N 0.00E on azimuth 268.960 degrees
Prepared by Integrated Petroleum Technologies, Inc.
Date Printed: 29-Aug-2013