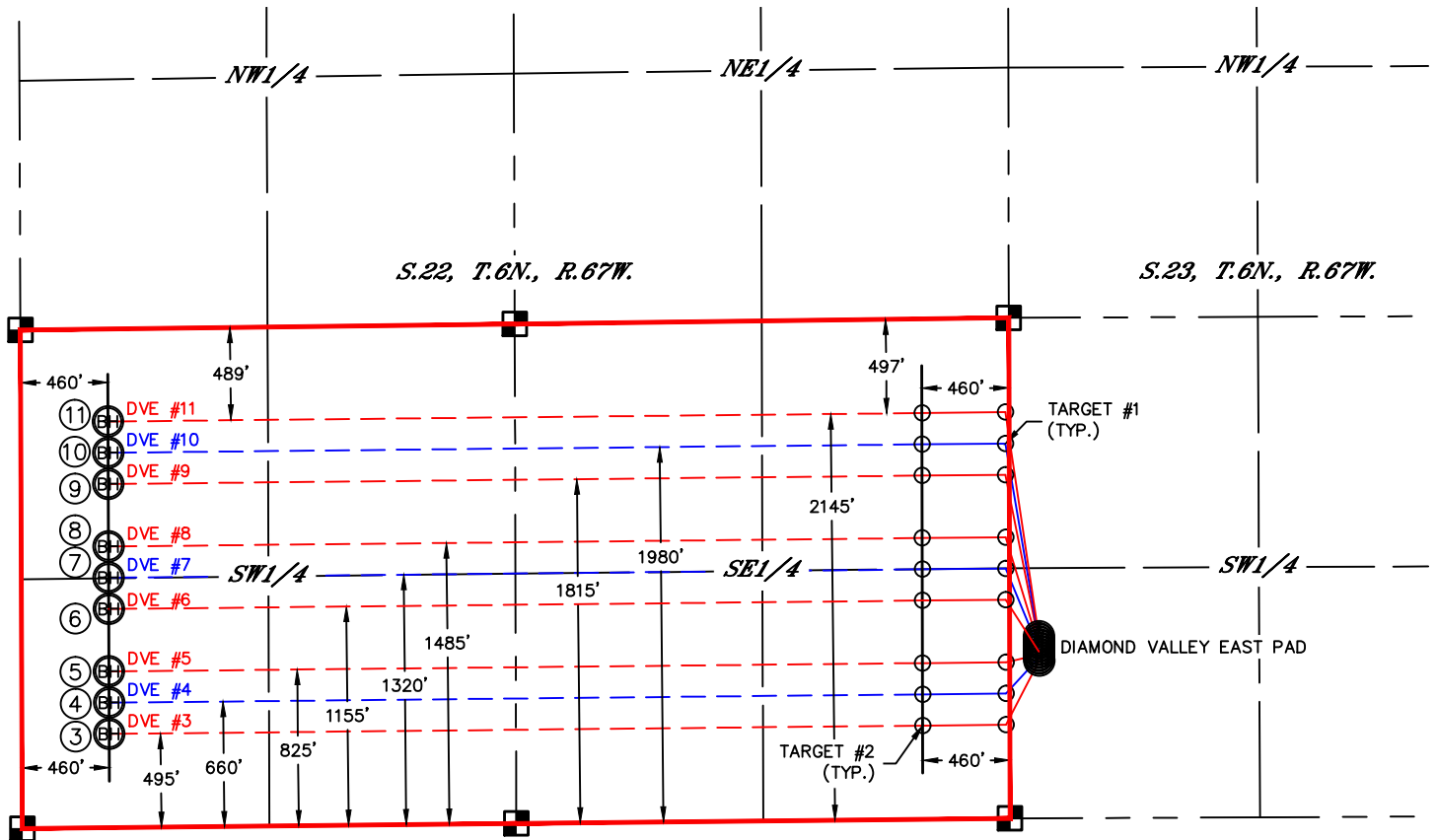


SPACING UNIT EXHIBIT

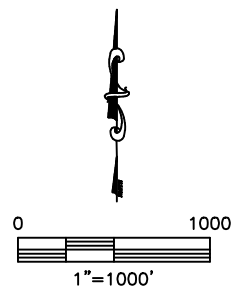
DIAMOND VALLEY EAST PAD

THIS MAP DOES NOT REPRESENT A BOUNDARY SURVEY

SECTION: 22
TOWNSHIP: 6N
RANGE: 67W



<p>③</p> <p>DIAMOND VALLEY EAST 3</p> <p>—BOTTOM HOLE S22— 495' FSL, 460' FWL</p> <p>—SURFACE HOLE S23— 832' FSL, 155' FWL</p>	<p>④</p> <p>DIAMOND VALLEY EAST 4</p> <p>—BOTTOM HOLE S22— 660' FSL, 460' FWL</p> <p>—SURFACE HOLE S23— 848' FSL, 155' FWL</p>	<p>⑤</p> <p>DIAMOND VALLEY EAST 5</p> <p>—BOTTOM HOLE S22— 825' FSL, 460' FWL</p> <p>—SURFACE HOLE S23— 864' FSL, 155' FWL</p>	<p>⑥</p> <p>DIAMOND VALLEY EAST 6</p> <p>—BOTTOM HOLE S22— 1155' FSL, 460' FWL</p> <p>—SURFACE HOLE S23— 880' FSL, 155' FWL</p>
<p>⑦</p> <p>DIAMOND VALLEY EAST 7</p> <p>—BOTTOM HOLE S22— 1320' FSL, 460' FWL</p> <p>—SURFACE HOLE S23— 896' FSL, 155' FWL</p>	<p>⑧</p> <p>DIAMOND VALLEY EAST 8</p> <p>—BOTTOM HOLE S22— 1485' FSL, 460' FWL</p> <p>—SURFACE HOLE S23— 912' FSL, 155' FWL</p>	<p>⑨</p> <p>DIAMOND VALLEY EAST 9</p> <p>—BOTTOM HOLE S22— 1815' FSL, 460' FWL</p> <p>—SURFACE HOLE S23— 928' FSL, 155' FWL</p>	<p>⑩</p> <p>DIAMOND VALLEY EAST 10</p> <p>—BOTTOM HOLE S22— 1980' FSL, 460' FWL</p> <p>—SURFACE HOLE S23— 944' FSL, 155' FWL</p>
<p>⑪</p> <p>DIAMOND VALLEY EAST 11</p> <p>—BOTTOM HOLE S22— 2145' FSL, 460' FWL</p> <p>—SURFACE HOLE S23— 960' FSL, 155' FWL</p>			



DATE: 9/03/2013
PROJECT#: 2013126



10/18/2013

VIA ELECTRONIC TRANSMITTAL

Colorado Oil and Gas Conservation Commission
Attn: Matt Lepore, Director
1120 Lincoln Street, Suite 801
Denver, CO 80203

RE: 30 Day Certification Letter

Diamond Valley East #3 Well: 832' FSL 155' FWL Sec. 23-T6N-R67W, Weld County, Colorado
Diamond Valley East #4 Well: 848' FSL 155' FWL Sec. 23-T6N-R67W, Weld County, Colorado
Diamond Valley East #5 Well: 864' FSL 155' FWL Sec. 23-T6N-R67W, Weld County, Colorado
Diamond Valley East #6 Well: 880' FSL 155' FWL Sec. 23-T6N-R67W, Weld County, Colorado
Diamond Valley East #7 Well: 896' FSL 155' FWL Sec. 23-T6N-R67W, Weld County, Colorado
Diamond Valley East #8 Well: 912' FSL 155' FWL Sec. 23-T6N-R67W, Weld County, Colorado
Diamond Valley East #9 Well: 928' FSL 155' FWL Sec. 23-T6N-R67W, Weld County, Colorado
Diamond Valley East #10 Well: 944' FSL 155' FWL Sec. 23-T6N-R67W, Weld County, Colorado
Diamond Valley East #11 Well: 960' FSL 155' FWL Sec. 23-T6N-R67W, Weld County, Colorado

Dear Mr. Lepore,

Tekton Windsor LLC (TW) hereby certifies that thirty (30) day notice has been given to all owners in the proposed wellbore spacing unit in accordance with Rule 318A.e(6). TW has received no objections to the subject well location, proposed spacing unit, or additional producing information from any owner as described in §34-60-103(7). The thirty (30) day objection period has expired. TW respectfully requests that the Director approve these wells.

Should you have any questions or concerns please contact the undersigned at 720-420-5700.

Sincerely,

Clayton L. Doke
Senior Engineer
Integrated Petroleum Technologies, Inc
Consultants to Tekton Windsor LLC