

Note:

The measurement for determining any Designated Setback Location shall be made from the center of the Well or Production Facility nearest any Building Unit to the nearest wall or corner of such Building Unit.

Building - 631'
 Building Unit - 631'
 HOBV - > 1 Mile
 DOAA - N/A
 Public Road - 815'
 Above Grnd Util. - 807'
 Railroad - > 1 Mile
 Property Line - 337'

Current Surface Land Use :
 Gas well pad

Surface: Valley Farms J3

190' FNL
 1313' FWL
 Gnd El= 5541.5
 Pad El= 5541.5

NAD83

Lat: 39.533840537°N
 Long: 107.620473273°W

NAD27

Lat: 39.533859939°N
 Long: 107.619859659°W

UTM 13 NORTH

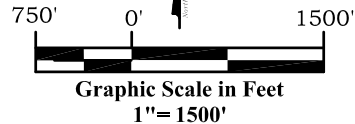
NAD 1983

NORTHING

14367752.274

EASTING

901535.380

**Legend**

- ◈ - Field Surveyed Section Corner
- ◈ - Field Surveyed Quarter Corner
- ◈ - Calculated Section Corner Location
- ◈ - Field Surveyed 1/6 Corner

Notes:

1. LATITUDE AND LONGITUDE COORDINATES ARE DIFFERENTIALLY CORRECTED AND BASED ON PUBLISHED NGS CONTROL STATION "WDP-5". SYSTEM: UTM ZONE: 13 NORTH DATUM: NAD 1983 (CONUS)
2. ELEVATIONS ARE BASED ON NAVD OF 1929.
3. ALL BOTTOM AND TOP HOLE LOCATIONS ARE MEASURED 90 DEGREES FROM SECTION LINE.
4. USGS QUADRANGLE MAP "SILT".
5. CURRENT SURFACE LAND USE: GAS WELL PAD.
6. PDOP AT THE TIME OF LOCATION OF SURFACE WELL = 2.4

Prepared For: Ursa Operating Company LLC

Proposed Valley Farms J3 Well Situate in The NE 1/4 NW 1/4 Section 13, Township 6 South, Range 92 West of the 6 th. Principal Meridian, County of Garfield, State of Colorado.

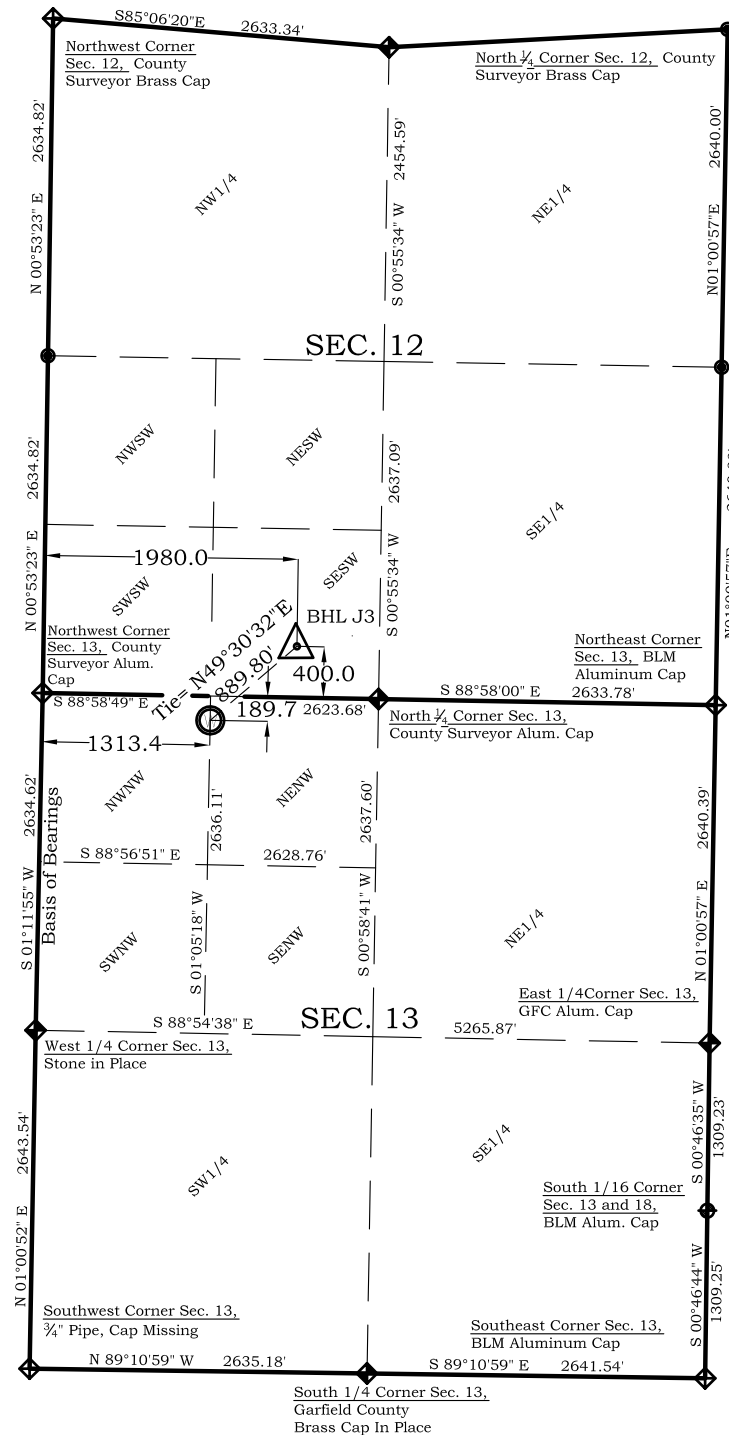


303.a Form 2

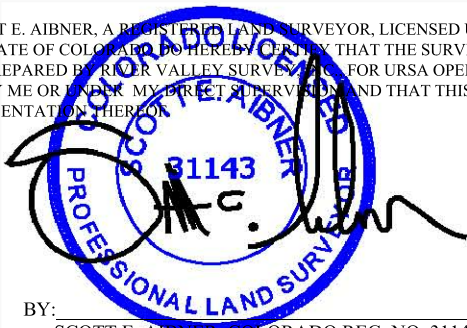
Valley Farms J Pad

Valley Farms J3 Location Plat

Section 13, Township 6 South, Range 92 West

**SURVEYOR'S CERTIFICATE**

I, SCOTT E. AIBNER, A REGISTERED LAND SURVEYOR, LICENSED UNDER THE LAWS OF THE STATE OF COLORADO DO HEREBY CERTIFY THAT THE SURVEY SHOWN HEREON WAS PREPARED BY RIVER VALLEY SURVEY, INC. FOR Ursa OPERATING COMPANY, LLC, BY ME OR UNDER MY DIRECT SUPERVISION AND THAT THIS PLAT IS A TRUE REPRESENTATION THEREOF.



BY:

SCOTT E. AIBNER, COLORADO REG. NO. 31143



River Valley Survey, Inc.
 110 East 3rd. Street, Suite 213
 Rifle, Colorado 81650
 Ph: 970-379-7846

Project: RVS 06001-36J

Field Date: 07-18-13

Scale: 1"= 1500'

Date: 08-23-13

Sheet: 1 of 1