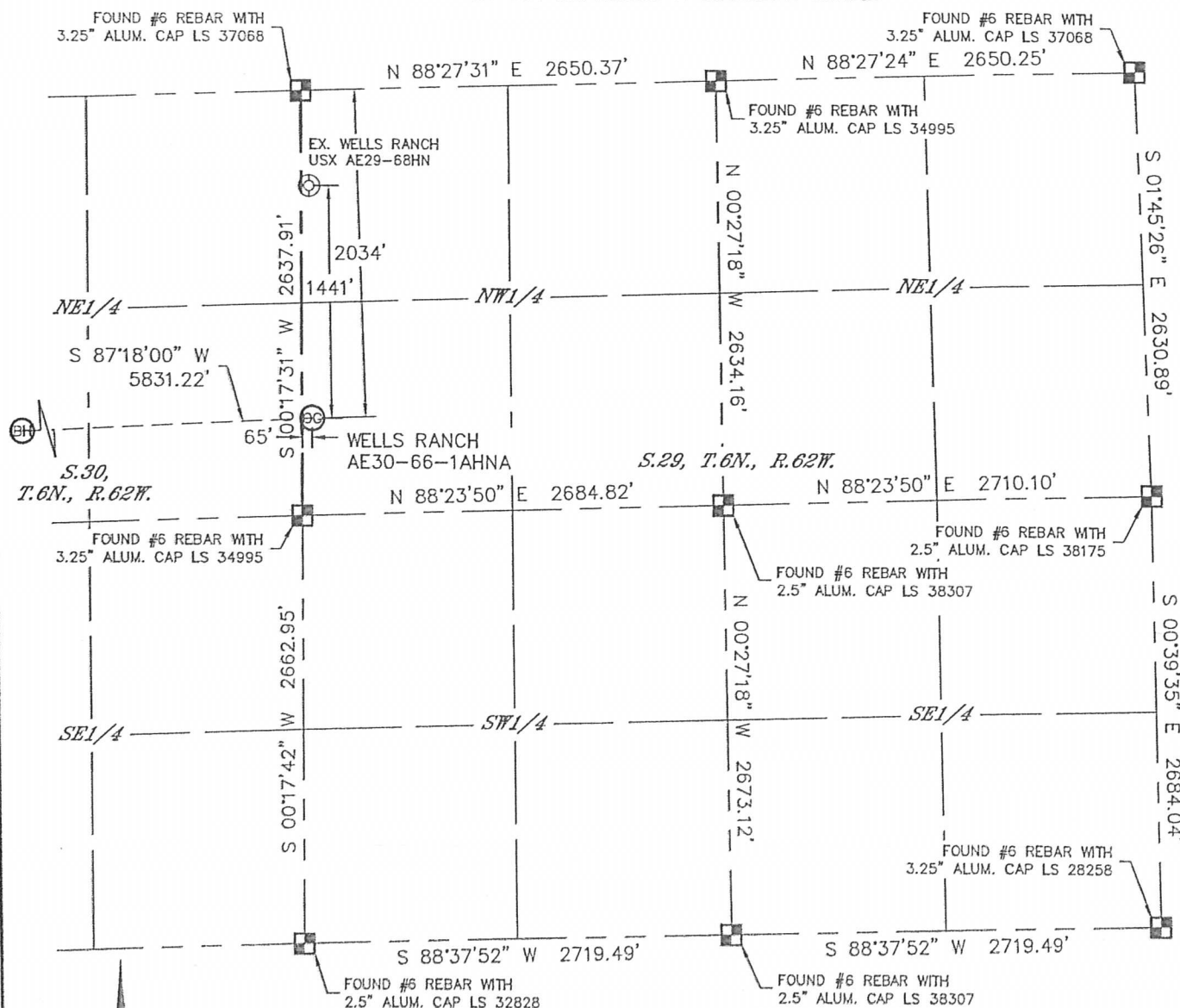


Lat40°, Inc. 1635 Foxtrail Drive, Suite 325 Loveland, CO 970-776-3321

WELL LOCATION CERTIFICATE

SECTION: 29
TOWNSHIP: 6N
RANGE: 62W



THIS MAP DOES NOT REPRESENT A BOUNDARY SURVEY



In accordance with a request from Preston Foster with Noble Energy Inc., Lat40^o, Inc. has determined the surface location of the WELLS RANCH AF30-66-1AHNA to be 2034' from the NORTH line and 65' from the WEST line as measured at right angles from the section lines of Section 29, Township 6 North, Range 62 West and the bottom hole to be 2145' from the NORTH line and 385' from the EAST line as measured at right angles from the section lines of Section 25, Township 6 North, Range 63 West of the Sixth Principal Meridian, County of Weld, State of Colorado.

I hereby state that this Well Location Certificate was prepared by me, or under my direct supervision, that the fieldwork was completed on 8/1/2013, for and on behalf of Noble Energy Inc.. That this is not a Land Survey Plat or an Improvement Survey Plat, and that it is not to be relied upon for establishment of fence, building, or other future improvement lines.

NOTE:

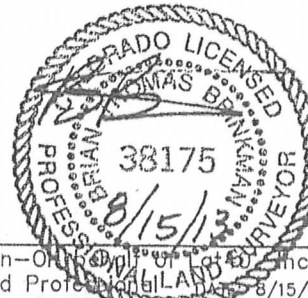
- 1) Bearings shown are Grid Bearings of the Colorado State Plane Coordinate System, North Zone, North American Datum 1983/2007. The lineal dimensions as contained herein are based upon the "U.S. Survey Foot."
- 2) Ground elevations are based on an observed GPS elevation (NAVD 1988 DATUM).
- 3) IMPROVEMENTS: See LOCATION DRAWING for all visible improvements within 500' of disturbed area.
- 4) SURFACE USE: RANGELAND
- 5) INSTRUMENT OPERATOR: ADAM KELLY
- 6) NEAREST EXISTING WELL: WELLS RANCH USX AE29-68HN, 1441'
- NEAREST CULTURAL ITEMS:
- BUILDING: 1307' N
- BUILDING UNIT: 5280'+
- HIGH OCCUPANCY BUILDING UNIT: 5280'+
- DESIGNATED OUTSIDE ACTIVITY AREA: 5280'+
- PUBLIC ROAD: 5280'+
- ABOVEGROUND UTILITY: 5280'+
- RAILROAD: 5280'+
- PROPERTY LINE: 65' W
- LEGEND
-  = ALIQUOT MONUMENT AS DEPICTED
-  = CALCULATED POSITION

SURFACE LOCATION

LAT: 40.45938°N
LONG: 104.35608°W
PDOP: 1.7
ELEV: 4764'
1/4,1/4: SW1/4NW1/4

BOTTOM HOLE

LAT: 40.45883N
LONG: 104.37702W



SHEET 1 OF 3

Brian T. Brinkman—Owner, Colorado Land Surveyor, Inc.
Colorado Licensed Professional Land Surveyor No. 38175
DATE: 8/15/2013
PROJECT#: 2013028

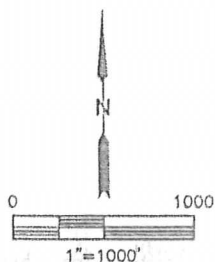
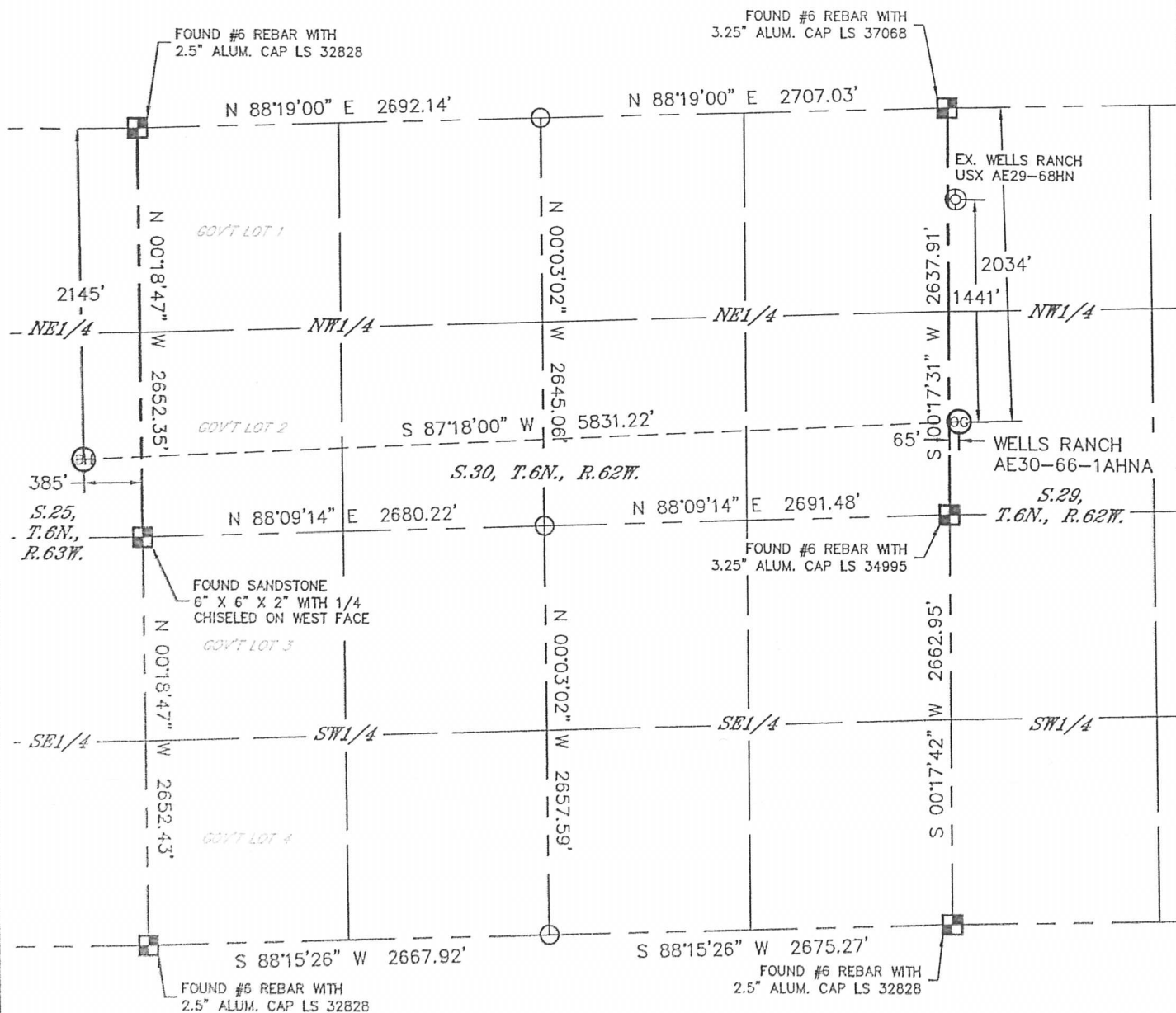


Lat40°, Inc. 1635 Foxtrail Drive, Suite 325 Loveland, CO 970-776-3321

WELL LOCATION CERTIFICATE

THIS MAP DOES NOT REPRESENT A BOUNDARY SURVEY

SECTION: 29
TOWNSHIP: 6N
RANGE: 62W

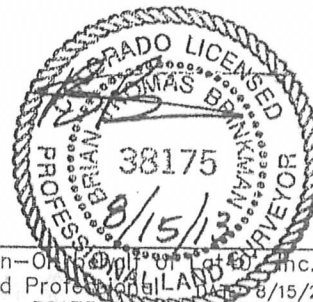


LEGEND

- = ALIQUOT MONUMENT AS DESCRIBED
- = CALCULATED POSITION

SHEET 2 OF 3

Brian T. Brinkman—Owner of Lat40, Inc.
Colorado Licensed Professional Land Surveyor No. 38175
DATE: 8/15/2013
PROJECT#: 2013028

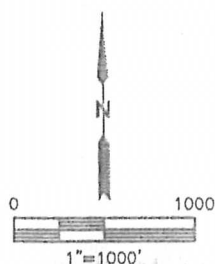
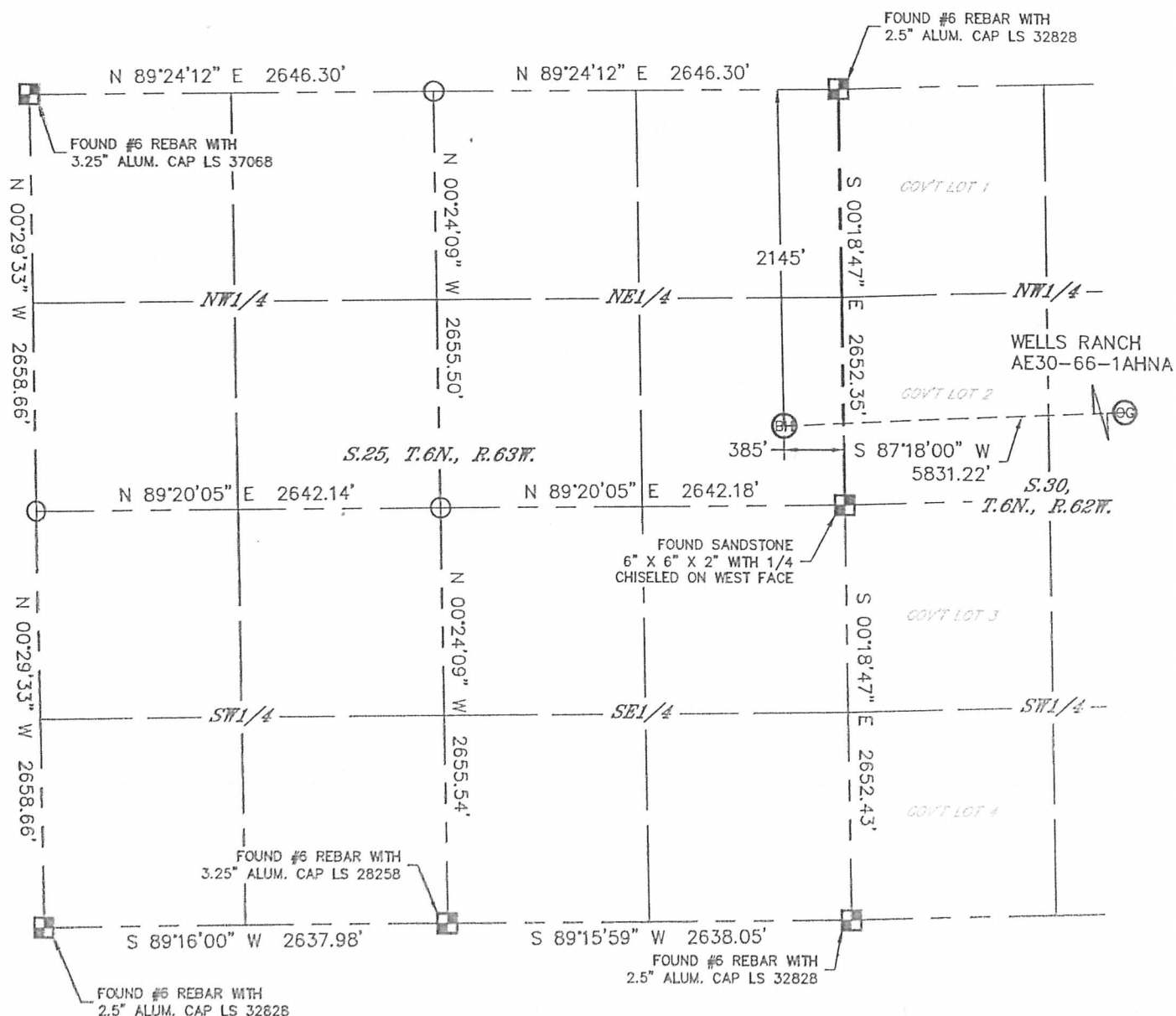


Lat40°, Inc. 1635 Foxtrail Drive, Suite 325 Loveland, CO 970-776-3321



WELL LOCATION CERTIFICATE

THIS MAP DOES NOT REPRESENT A BOUNDARY SURVEY

SECTION: 29
TOWNSHIP: 6N
RANGE: 62W

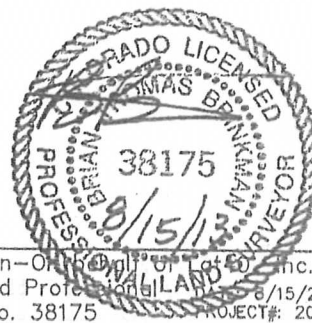


LEGEND

-  = ALIQUOT MONUMENT AS DESCRIBED
 = CALCULATED POSITION

SHEET 3 OF 3

Brian T. Brinkman—Owner of L&S, Inc.
Colorado Licensed Professional Surveyor No. 38175
Date: 8/15/2013
PROJECT#: 2013028



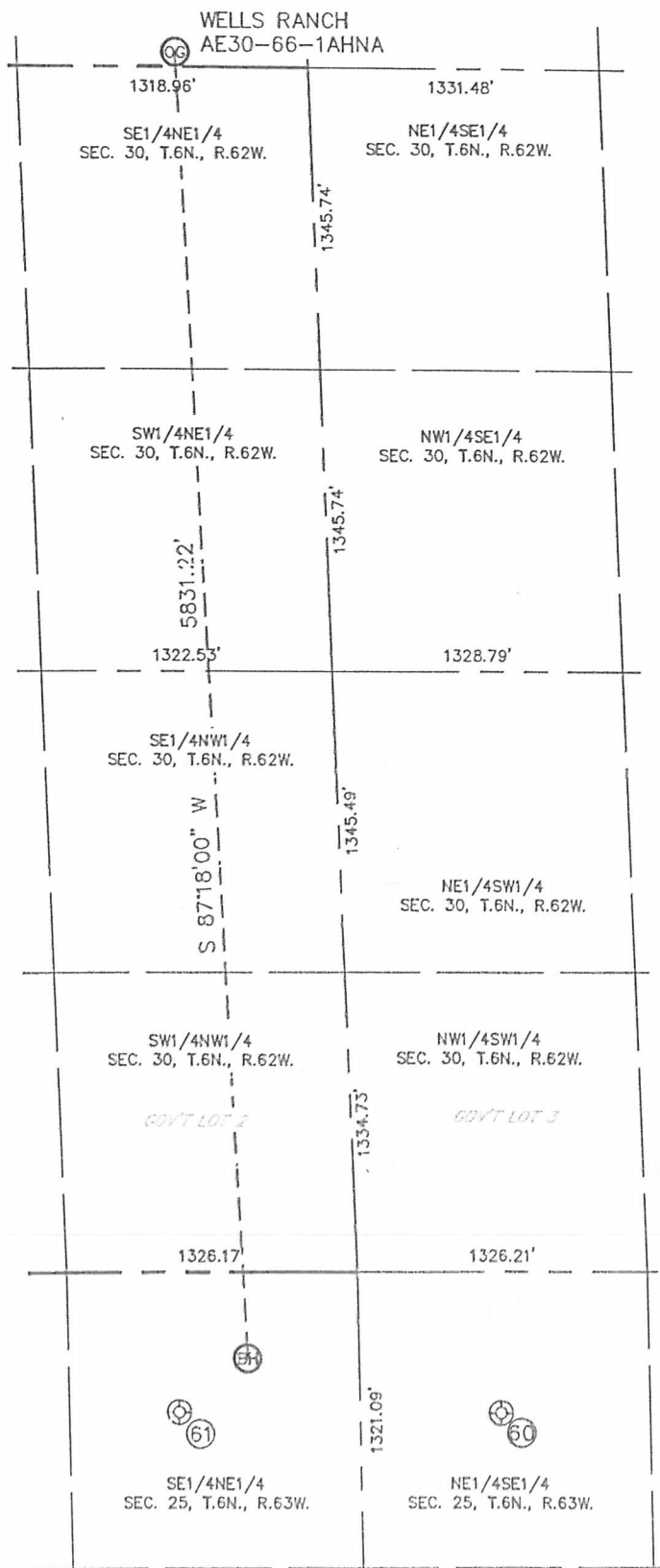


Lat40°, Inc. 1635 Foxtrail Drive, Suite 325 Loveland, CO 970-776-3321

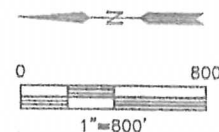
SITE SKETCH

WELLS RANCH AE30-66-1AHNA

SECTION: 29
TOWNSHIP: 6N
RANGE: 62W



WELL NO.	WELL NAME	SHL FOOTAGE				SHL LAT°	SHL LONG°	PDOP	ELEV (FT.)	1/4/1/4
		2012	FSL	631	FEL					
60	WELLS RANCH USX AA 25-09	1829	FNL	626	FEL	40.45567	-104.37793	2.0	4718	NESE
61	WELLS RANCH USX AA 25-8	1829	FNL	626	FEL	40.45969	-104.37788	2.1	4745	SENE



DATE: 8/14/2013
PROJECT#: 2013028