

Project: Wattenberg Field
Site: AE (Sec.29-T06N-R63W) Weld County, CO
Well: Wells Ranch AE30-66-1AHNA
Wellbore: Original Drilling
Design: APD - Rev 0

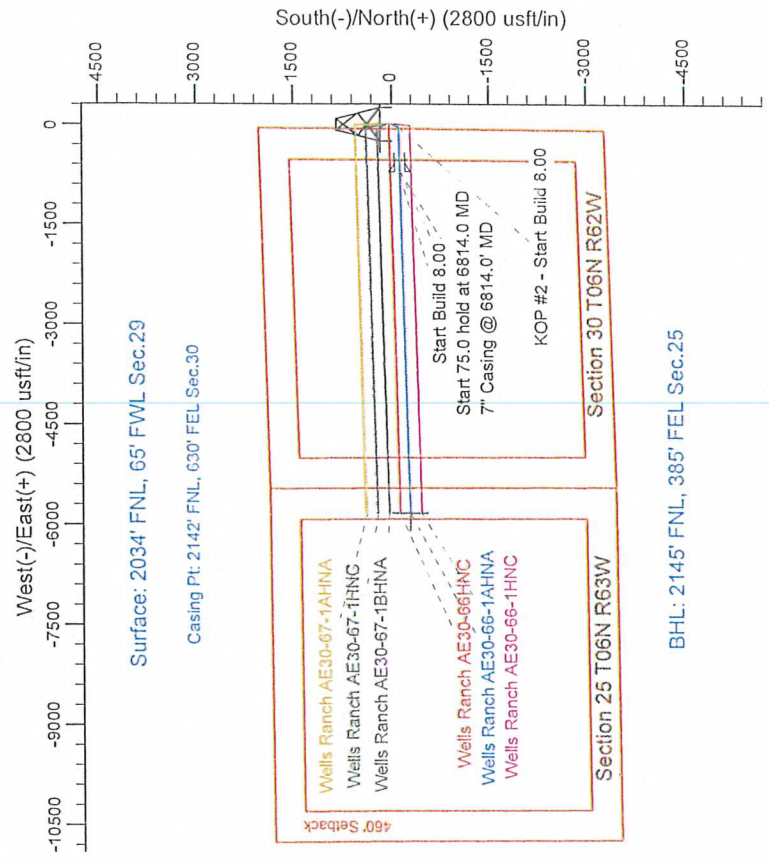
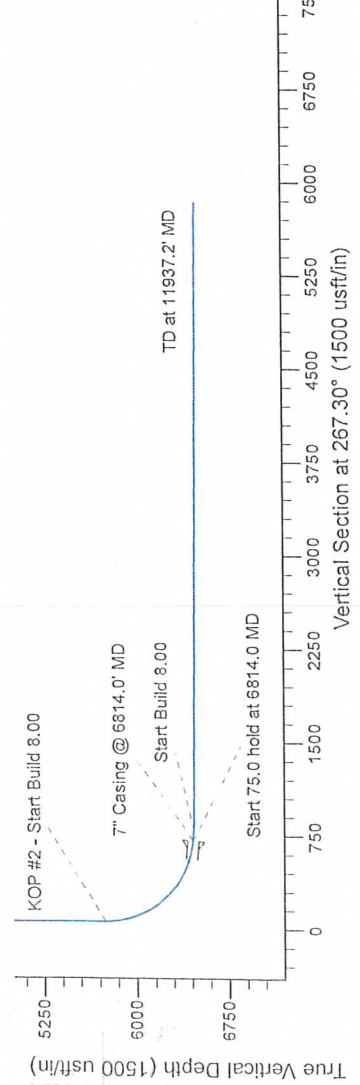
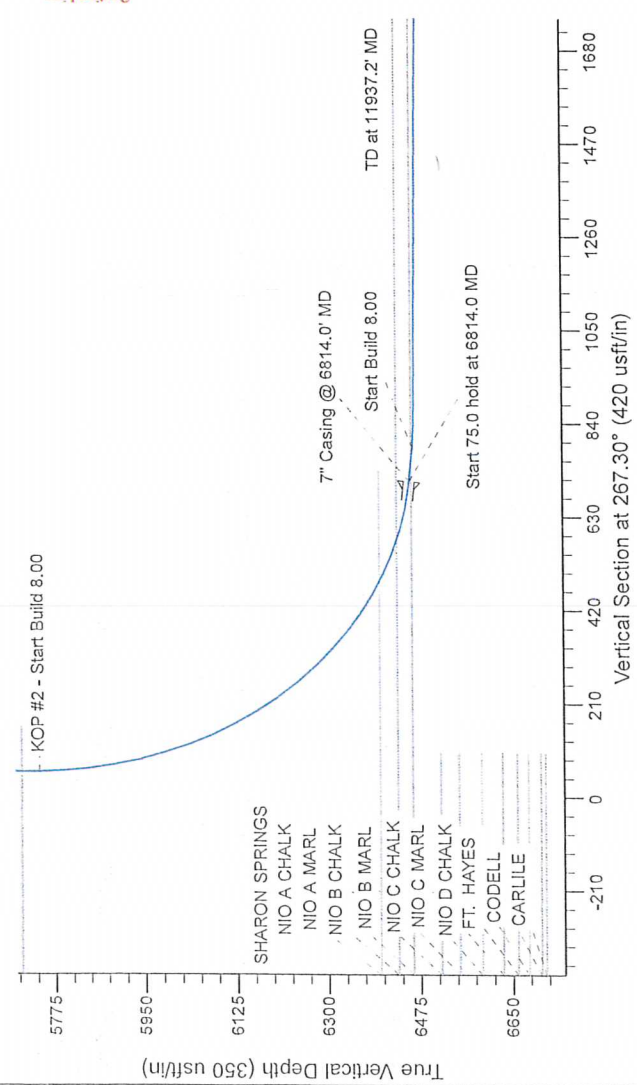
Northern Region Drilling - Working

Geodetic System: US State Plane 1983
Datum: North American Datum 1983
Ellipsoid: GRS 1980
Zone: Colorado Northern Zone
System Datum: Mean Sea Level

SECTION DETAILS

Sec	MD	Inc	Azi	TVD	+NLS	+ELW	Dleg	TFace	VSecl	Target
1	0.0	0.00	0.00	0.0	0.0	0.0	0.00	0.00	0.0	
2	1800.0	0.00	0.00	1800.0	0.0	0.0	0.00	0.00	0.0	
3	2381.9	11.64	204.25	2377.8	-53.7	-24.2	2.00	204.25	26.7	
4	2401.6	11.64	204.25	2397.2	-57.3	-25.8	0.00	0.00	28.5	
5	2983.4	0.00	0.00	2975.0	-111.0	-50.0	2.00	180.00	55.2	
6	5751.5	0.00	0.00	5743.1	-111.0	-50.0	0.00	0.00	55.2	
7	6814.0	85.00	268.37	6456.6	-129.5	-703.5	8.00	268.37	708.8	
8	6889.0	85.00	268.37	6463.2	-131.7	-778.2	0.00	0.00	783.5	
9	6946.5	89.60	268.37	6465.9	-133.3	-835.6	8.00	0.00	840.9	
10	11937.2	89.60	268.37	6500.7	-274.8	-824.1	0.00	0.00	5630.6	

Wells Ranch AE30-66-1AHNA BHL 2145'FNL, 385'FEL



T G M

Azimuths to Grid North
True North: -0.74°
Magnetic North: 7.55°

Magnetic Field
Strength: 52992.0snT
Dip Angle: 67.10°
Date: 9/20/2013
Model: IGRF200510

WELL DETAILS: Wells Ranch AE30-66-1AHNA		
0.0	0.0	0.0
North	East	Ground Level: 4784.0
1412245.61	3318305.68	Latitude
		Longitude
		-104.356080
Plan: APD - Rev 0 (Wells Ranch AE30-66-1AHNA/Original Drilling)		
Created By: Shalley Jewell		Date: 10/53, September 23 2013
Checked:		Date:
Reviewed:		Date:
Approved:		Date: