

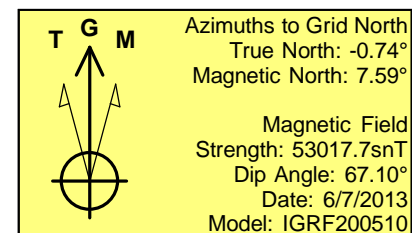
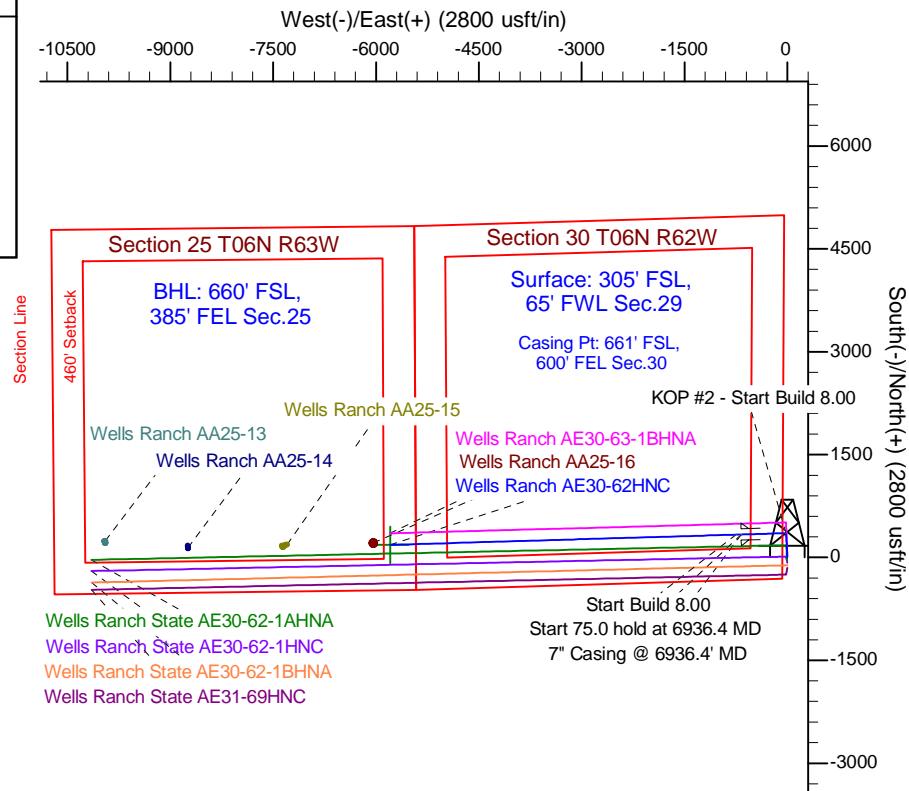
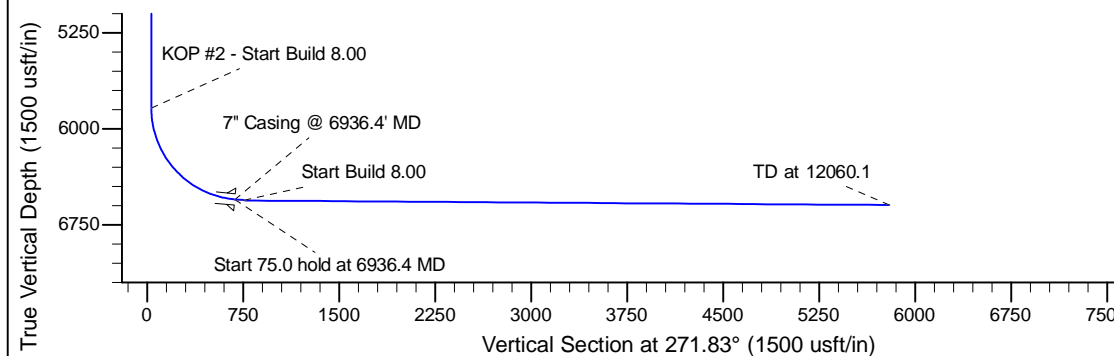
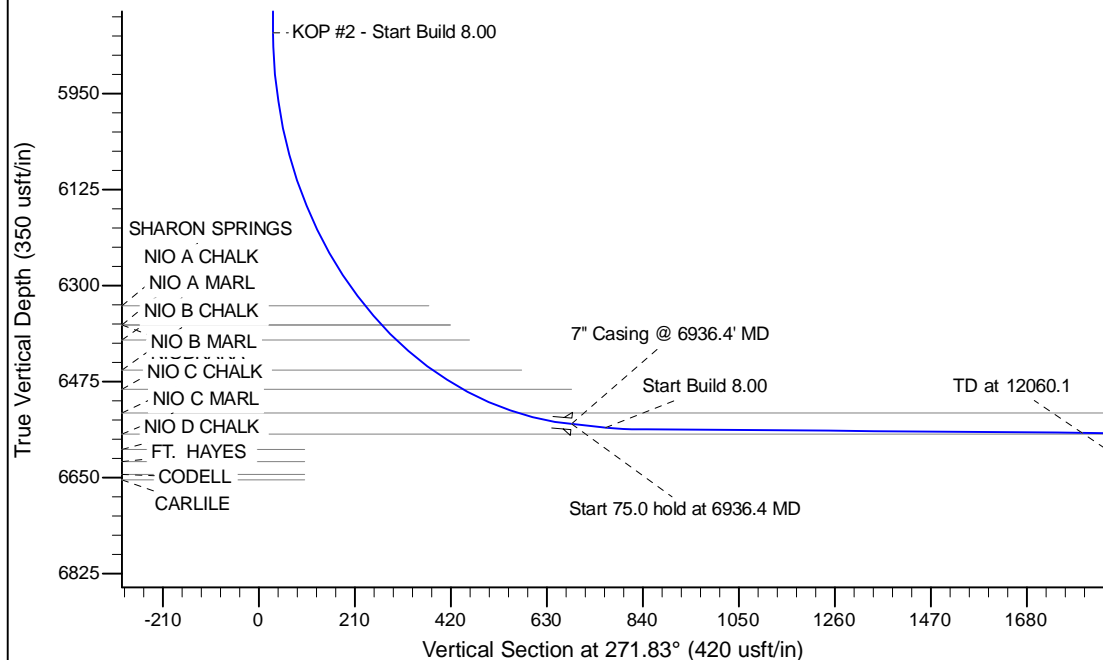
Project: Wattenberg Field
 Site: AE (Sec.29-T06N-R62W) Weld County, CO
 Well: Wells Ranch AE30-62HNC
 Wellbore: Original Drilling
 Design: APD - Rev 0

Northern Region Drilling - Working

Geodetic System: US State Plane 1983
 Datum: North American Datum 1983
 Ellipsoid: GRS 1980
 Zone: Colorado Northern Zone
 System Datum: Mean Sea Level

SECTION DETAILS

Sec	MD	Inc	Azi	TVD	+N/-S	+E/-W	Dleg	TFace	VSect	Target
1	0.0	0.00	0.00	0.0	0.0	0.0	0.00	0.00	0.0	
2	1200.0	0.00	0.00	1200.0	0.0	0.0	0.00	0.00	0.0	
3	1852.0	13.04	356.78	1846.4	73.8	-4.2	2.00	356.78	6.5	
4	2772.9	13.04	356.78	2743.6	281.2	-15.8	0.00	0.00	24.8	
5	3425.0	0.00	0.00	3390.0	355.0	-20.0	2.00	180.00	31.3	
6	5873.9	0.00	0.00	5838.9	355.0	-20.0	0.00	0.00	31.3	
7	6936.4	85.00	268.31	6552.4	335.7	-673.5	8.00	268.31	683.8	
8	7011.4	85.00	268.31	6558.9	333.5	-748.2	0.00	0.00	758.4	
9	7068.9	89.60	268.31	6561.7	331.8	-805.6	8.00	0.00	815.7	
10	12060.1	89.60	268.31	6596.5	184.6	-5794.4	0.00	0.00	5797.4	Wells Ranch AE30-62HNC BHL 660'FSL, 385'FEL



WELL DETAILS: Wells Ranch AE30-62HNC				
Ground Level: 4748.0				
0.0	0.0	1409283.40	3318291.01	40.451250
Longitude: -104.356270				
Plan: APD - Rev 0 (Wells Ranch AE30-62HNC/Original Drilling)				
Created By: Shailey Jewell		Date: 7:30, September 13 2013		
Checked: _____		Date: _____		
Reviewed: _____		Date: _____		
Approved: _____		Date: _____		