

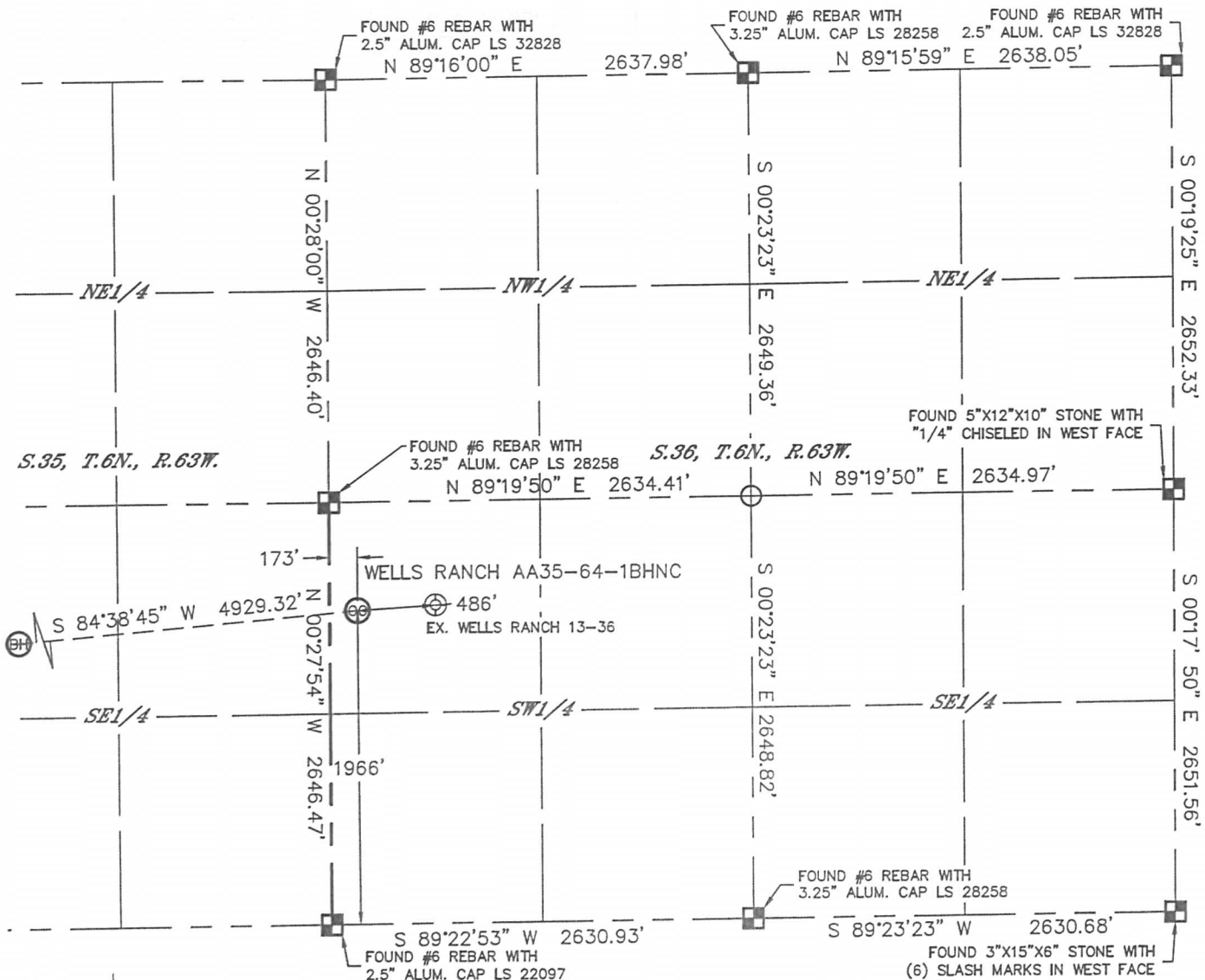


Lat40°, Inc. 1635 Foxtrail Drive, Suite 325 Loveland, CO 970-776-3321

WELL LOCATION CERTIFICATE

THIS MAP DOES NOT REPRESENT A BOUNDARY SURVEY

SECTION: 36
TOWNSHIP: 6N
RANGE: 63W



In accordance with a request from JACOB RICE with Noble Energy Inc. Lat40°, Inc. has determined the surface location of the WELLS RANCH AA35-64-1BHNC to be 1966' from the SOUTH line and 173' from the WEST line as measured at right angles from the section lines of Section 36, Township 6 North, Range 63 West and the bottom hole to be 1560' from the SOUTH line and 535' from the WEST line of Section 35, Township 6 North, Range 63 West of the Sixth Principal Meridian, County of Weld, State of Colorado.

I hereby state that this Well Location Certificate was prepared by me, or under my direct supervision, that the fieldwork was completed on 8/2/2013, for and on behalf of Noble Energy Inc. That this is not a Land Survey Plat or an Improvement Survey Plat, and that it is not to be relied upon for establishment of fence, building, or other future improvement lines.

NOTE: 1"=1000'

- Bearings shown are Grid Bearings of the Colorado State Plane Coordinate System, North Zone, North American Datum 1983/2007. The lineal dimensions as contained herein are based upon the "U.S. Survey Foot."
 - Ground elevations are based on an observed GPS elevation (NAVD 1988 DATUM).
 - IMPROVEMENTS: See LOCATION DRAWING for all visible improvements within 500' of disturbed area.
 - SURFACE USE: RANGELAND
 - INSTRUMENT OPERATOR: ADAM KELLY
 - NEAREST EXISTING WELL: WELLS RANCH 13-36, 486'
- NEAREST CULTURAL ITEMS:
BUILDING: 5280'+
BUILDING UNIT: 5280'+
HIGH OCCUPANCY BUILDING UNIT: 5280'+
DESIGNATED OUTSIDE ACTIVITY AREA: 5280'+
PUBLIC ROAD: 5280'+
ABOVEGROUND UTILITY: 5280'+
RAILROAD: 5280'+
PROPERTY LINE: 173' WEST

SURFACE LOCATION
LAT: 40.44102N
LONG: 104.39410W
PDOP: 1.6
ELEV: 4772'
1/4, 1/4: NW1/4SW1/4

BOTTOM HOLE
LAT: 40.43992N
LONG: 104.41175W

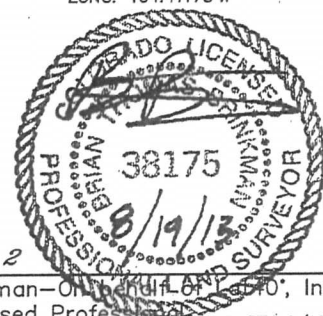
LEGEND

- = ALIQUOT MONUMENT AS DESCRIBED
○ = CALCULATED POSITION

SHEET 1 OF 2

Brian T. Brinkman—On behalf of Lat40°, Inc.
Colorado Licensed Professional
Land Surveyor No. 38175

DATE: 8/19/2013
PROJECT#: 2013028



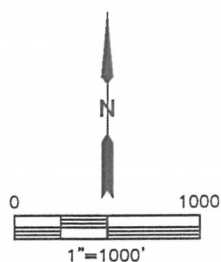
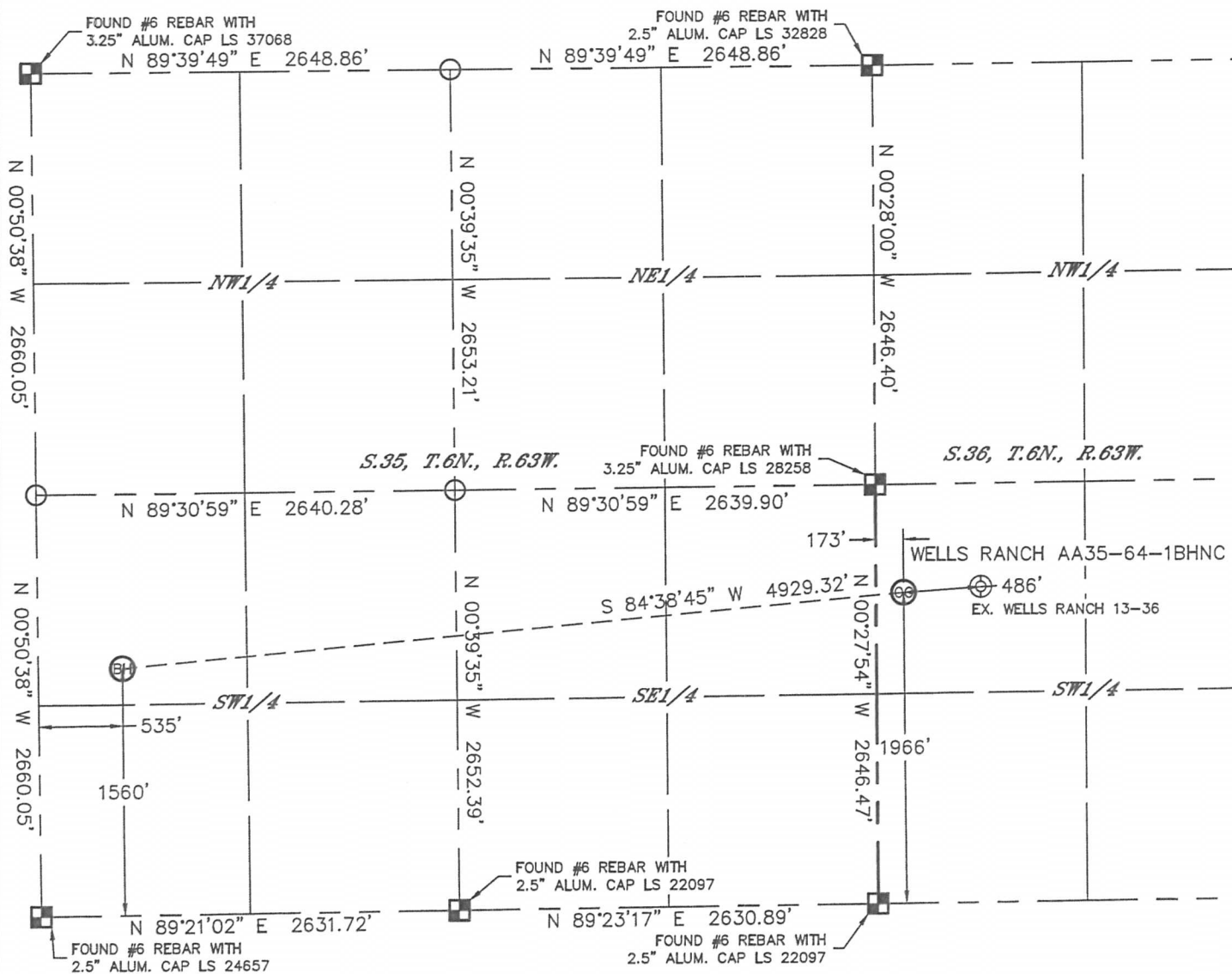


Lat40°, Inc. 1635 Foxtrail Drive, Suite 325 Loveland, CO 970-776-3321

WELL LOCATION CERTIFICATE

THIS MAP DOES NOT REPRESENT A BOUNDARY SURVEY

SECTION: 36
TOWNSHIP: 6N
RANGE: 63W



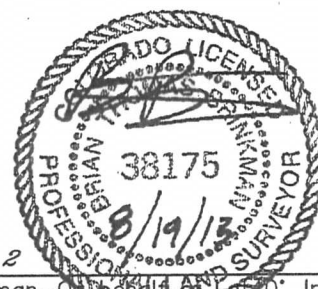
LEGEND

- = ALIQUOT MONUMENT AS DESCRIBED
- = CALCULATED POSITION

SHEET 2 OF 2

Brian T. Brinkman—Owner
Colorado Licensed Professional
Land Surveyor No. 38175

DATE: 8/19/2013
PROJECT#: 2013028



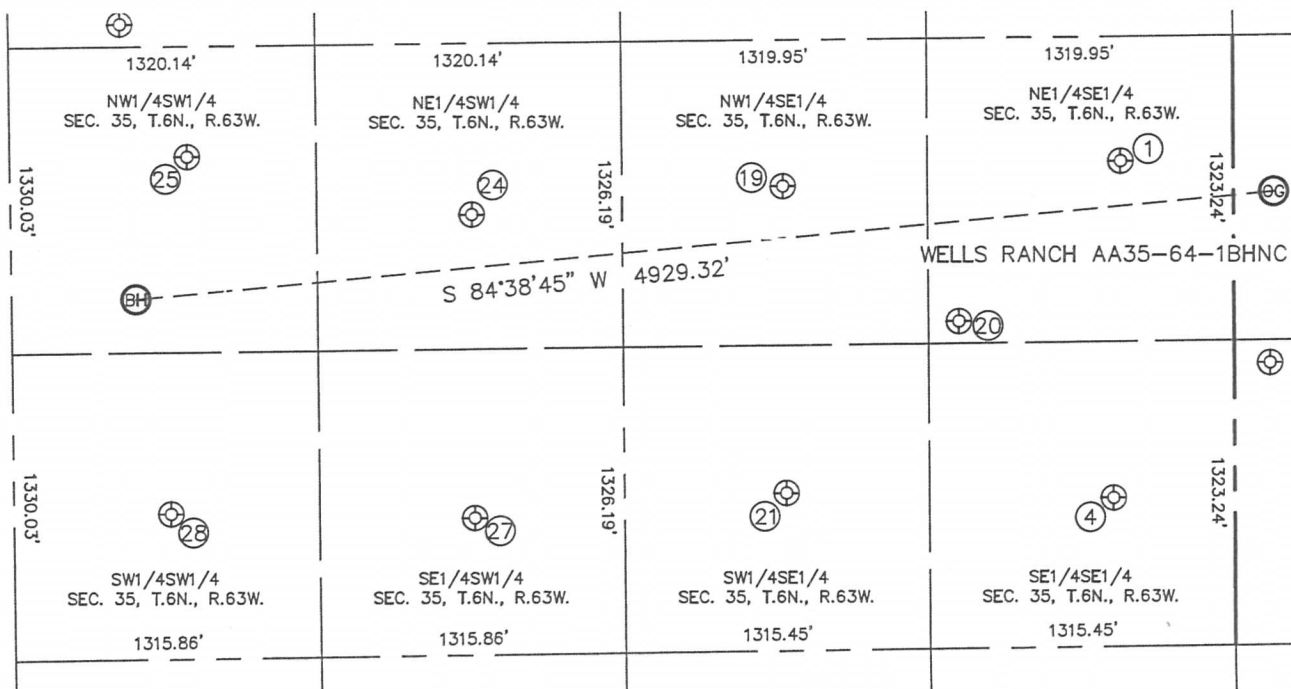


Lat40°, Inc. 1635 Foxtrail Drive, Suite 325 Loveland, CO 970-776-3321

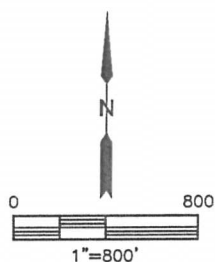
SITE SKETCH

WELLS RANCH AA35-64-1BHNC

SECTION: 36
TOWNSHIP: 6N
RANGE: 63W



| WELL NO. | WELL NAME | SHL FOOTAGE | | | | SHL LAT° | SHL LONG° | PDOP | ELEV (FT.) | 1/4/1/4 |
|----------|--------------------------|-------------|-----|------|-----|----------|------------|------|------------|---------|
| 1 | WELLS RANCH USX AA 35-9 | 2107 | FSL | 487 | FEL | 40.44141 | -104.39647 | 2.0 | 4754 | NESE |
| 4 | WELLS RANCH USX AA 35-16 | 646 | FSL | 524 | FEL | 40.43740 | -104.39663 | 1.5 | 4730 | SESE |
| 19 | WELLS RANCH-USX AA 35-10 | 2016 | FSL | 1943 | FEL | 40.44117 | -104.40170 | 1.6 | 4744 | NWSE |
| 20 | WELLS RANCH-USX AA 35-23 | 1420 | FSL | 1187 | FEL | 40.43953 | -104.39900 | 1.7 | 4756 | NESE |
| 21 | WELLS RANCH USX AA 35-15 | 686 | FSL | 1934 | FEL | 40.43752 | -104.40169 | 1.9 | 4718 | SWSE |
| 24 | WELLS RANCH USX AA 35-11 | 1910 | FSL | 1988 | FWL | 40.44088 | -104.40653 | 1.9 | 4770 | NESW |
| 25 | WELLS RANCH-USX AA 35-12 | 2178 | FSL | 763 | FWL | 40.44162 | -104.41093 | 1.7 | 4785 | NWSW |
| 27 | WELLS RANCH USX AA 35-14 | 595 | FSL | 1985 | FWL | 40.43727 | -104.40653 | 2.3 | 4758 | SESW |
| 28 | WELLS RANCH 14-35 | 629 | FSL | 676 | FWL | 40.43737 | -104.41123 | 1.7 | 4761 | SWSW |



DATE: 8/19/2013
PROJECT#: 2013028