

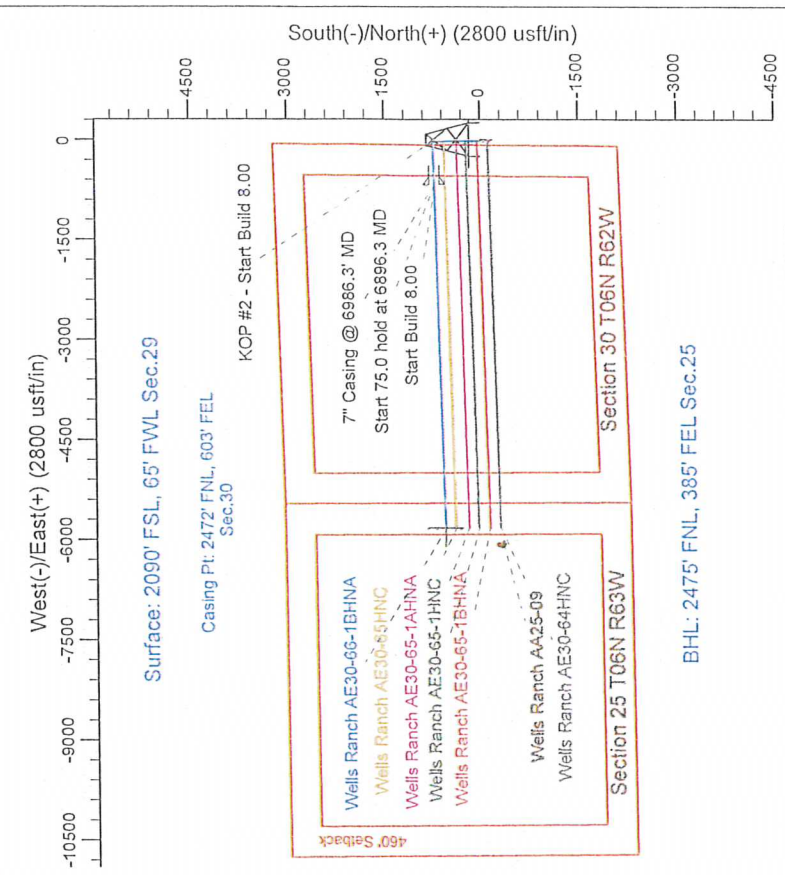
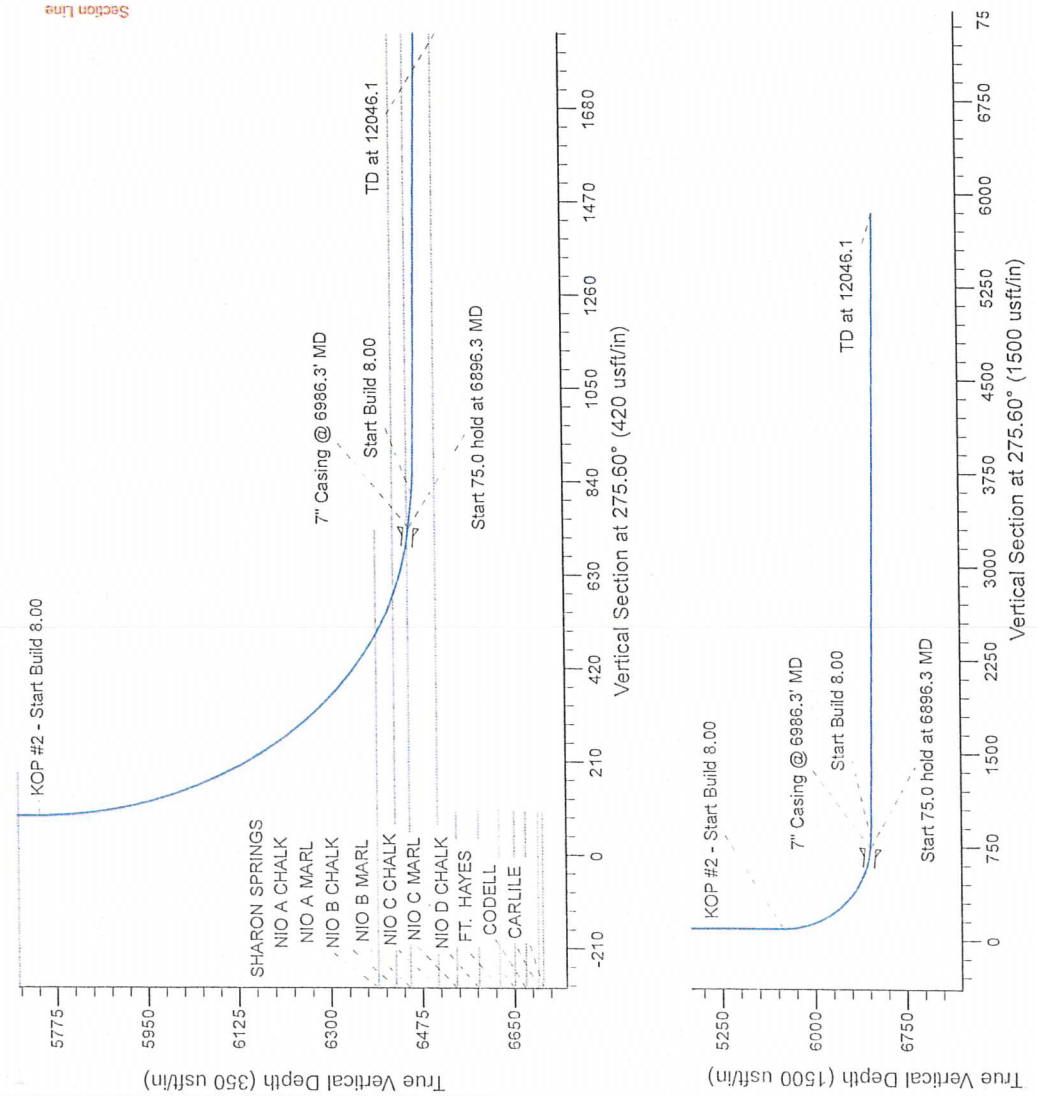
Project: Wattenberg Field  
Site: AE (Sec.25-T06N-R62W) Weld County, CO  
Well: Wells Ranch AE30-66-1BHNA  
Wellbore: Original Drilling  
Design: APD - Rev 0

Northern Region Drilling - Working

Geodetic System: US State Plane 1983  
Datum: North American Datum 1983  
Ellipsoid: GRS 1980  
Zone: Colorado Northern Zone  
System Datum: Mean Sea Level

SECTION DETAILS									
Sec	MD	Inc	Azi	TVD	+N/S	+E/W	Dleg	TFace	VSect
1	0.0	0.00	0.00	0.00	0.0	0.0	0.00	0.00	0.0
2	1000.0	16.00	358.93	1789.7	0.0	0.0	0.00	0.00	0.0
3	3890.0	16.00	358.93	3579.3	111.0	-2.3	2.00	358.83	13.1
4	4481.8	0.00	0.00	4369.0	624.0	-12.7	0.00	0.00	73.6
5	5893.8	0.00	0.00	5740.9	735.0	-15.0	0.00	0.00	86.7
6	6893.8	85.00	268.38	6454.4	716.5	-698.5	0.00	0.00	86.7
7	6971.3	85.00	268.38	6460.9	714.4	-743.2	0.00	0.00	735.3
8	7026.3	89.40	268.38	6463.6	712.8	-798.1	0.00	0.00	809.4
9	12046.1	89.40	268.38	6516.2	570.6	-5815.6	0.00	0.00	863.9
10									5843.5

Wells Ranch AE30-66-1BHNA BHL 2475FNL, 385FEL



T  
G  
M

Azimuths to Grid North  
True North: -0.74°  
Magnetic North: 7.59°

Magnetic Field  
Strength: 53020.2snT  
Dip Angle: 67.10°  
Date: 6/7/2013  
Model: IGRF200510

WELL DETAILS: Wells Ranch AE30-66-1BHNA

Ground Level	4759.0	Longitude	-104.356160
North	1411068.72	Latitude	40.456150

Plan: APD - Rev 0 (Wells Ranch AE30-66-1BHNA/Original Drilling)  
Created By: Shalley Jewell  
Checked: \_\_\_\_\_  
Reviewed: \_\_\_\_\_  
Approved: \_\_\_\_\_  
Date: 11:00, September 19, 2013