

Project: Wattenberg Field
Site: AE (Sec.29-T06N-R62W) Weld County, CO
Well: Wells Ranch AE30-65-1AHNA
Wellbore: Original Drilling
Design: APD - Rev 0

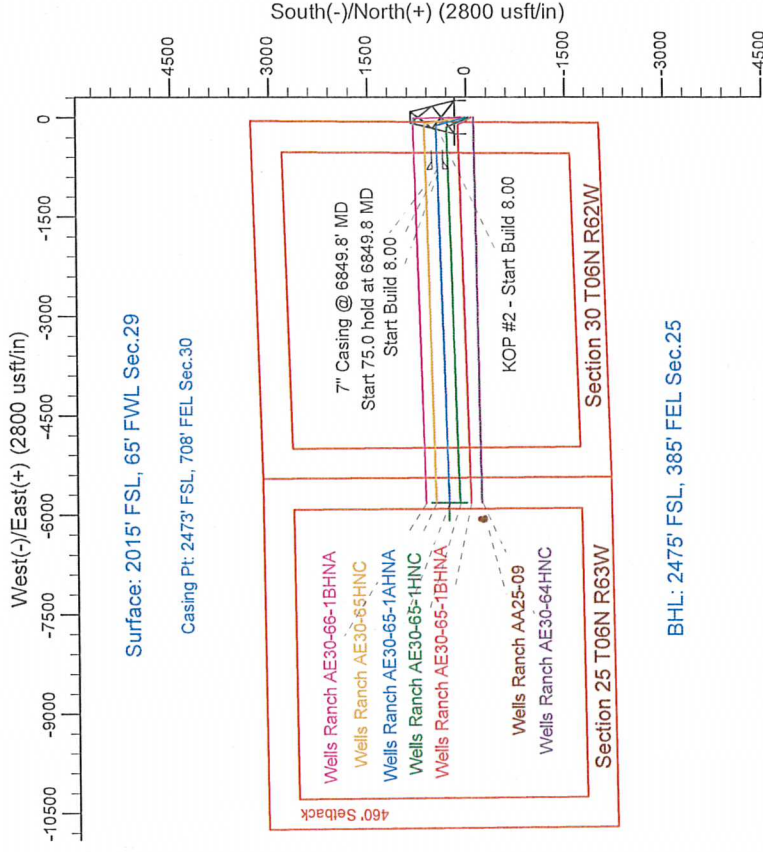
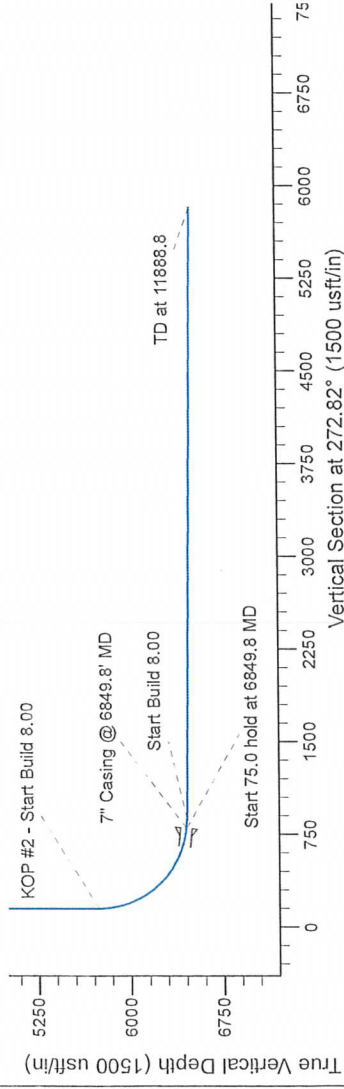
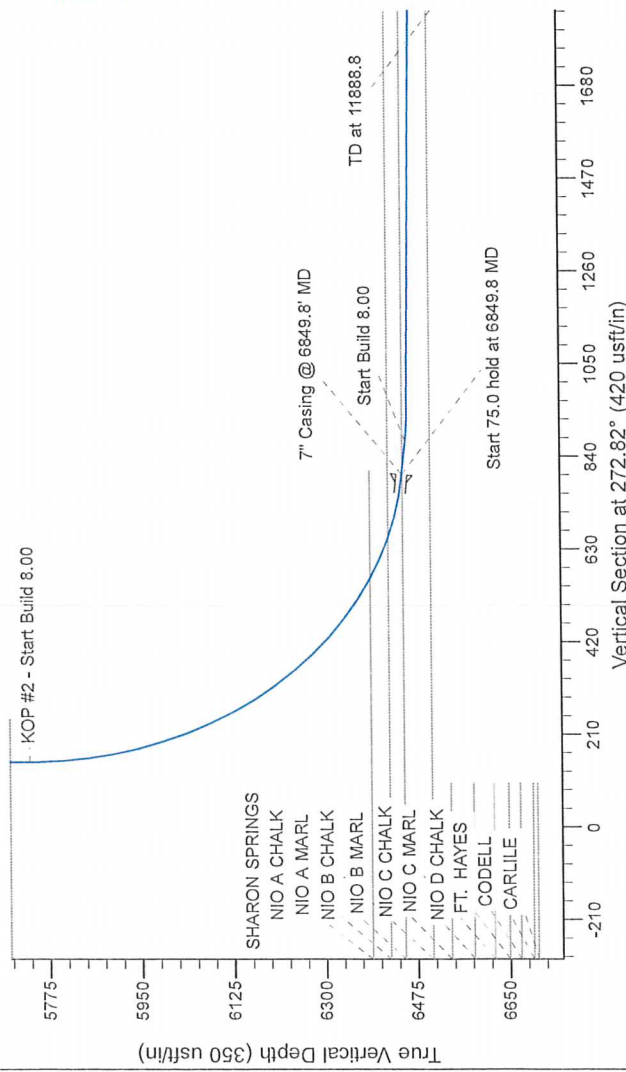
Northern Region Drilling - Working

Geodetic System: US State Plane 1983
Datum: North American Datum 1983
Ellipsoid: GRS 1980
Zone: Colorado Northern Zone
System Datum: Mean Sea Level

SECTION DETAILS

Sec	MD	Inc	Azi	TVD	+N/-S	+E/-W	Dleg	TFace	Vsect	Target
1	0.0	0.00	0.00	0.0	0.0	0.0	0.00	0.00	0.0	
2	1500.0	0.00	0.00	1500.0	0.0	0.0	0.00	0.00	0.0	
3	2201.0	14.02	344.48	2187.0	82.2	-218	2.00	344.48	26.9	
4	3424.4	14.02	344.48	3381.0	367.8	-102.2	0.00	0.00	120.1	
5	5725.4	0.00	0.00	4075.0	450.0	-125.0	0.00	0.00	147.0	
6	6849.8	0.00	0.00	5736.9	450.0	-125.0	0.00	0.00	147.0	
7	6849.8	83.00	268.35	6450.4	431.2	-778.5	8.00	268.35	798.8	
8	6879.8	89.40	268.35	6456.9	429.1	-853.2	8.00	0.00	873.3	
9	6879.8	89.40	268.35	6459.6	427.5	-908.1	8.00	0.00	928.0	
10	11368.8	89.40	268.35	6511.0	286.4	-5814.8	0.00	0.00	5821.9	

Wells Ranch AE30-65-1AHNA BHL 2475'FSL, 385'FEL



T G M

Azimuths to Grid North
True North: -0.74°
Magnetic North: 7.59°

Magnetic Field
Strength: 53020.1 nT
Dip Angle: 67.10°
Date: 6/7/2013
Model: IGRF200510

WELL DETAILS: Wells Ranch AE30-65-1AHNA

	North	East	Lat	Long
0.0	0.0	1410995.86	40.455950	-104.356160

Plan: APD - Rev 0 (Wells Ranch AE30-65-1AHNA/Original Drilling)

Created By: Shalley Jewell	Date: 11/59, September 20 2013
Checked:	Date:
Reviewed:	Date:
Approved:	Date: