

Project: Wattenberg Field
Site: AE (Sec.29-T06N-R62W) Weld County, CO
Well: Wells Ranch AE30-65-1HNC
Wellbore: Original/Drilling
Design: APD - Rev 0

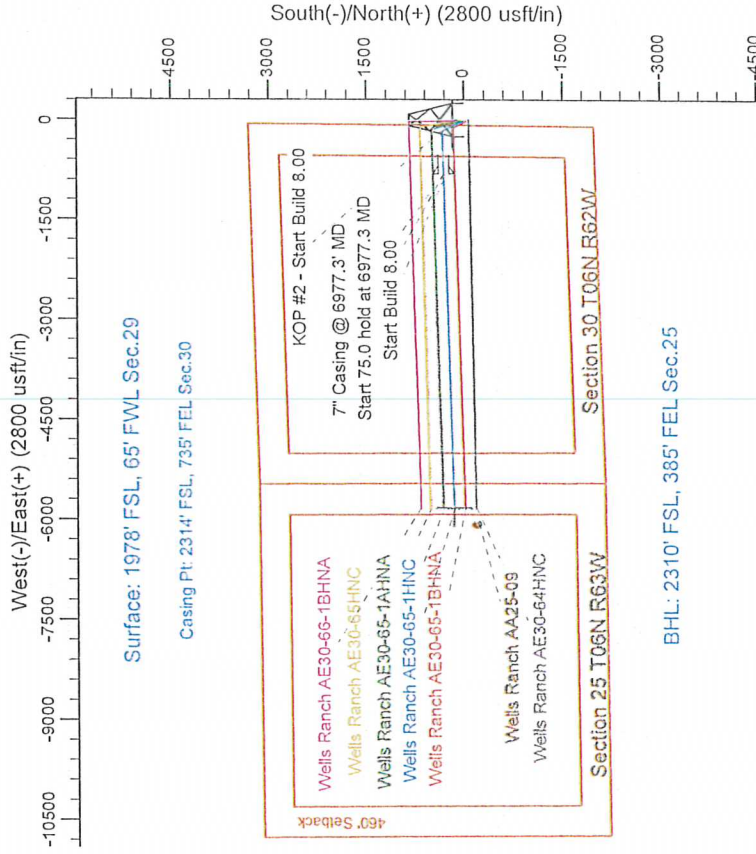
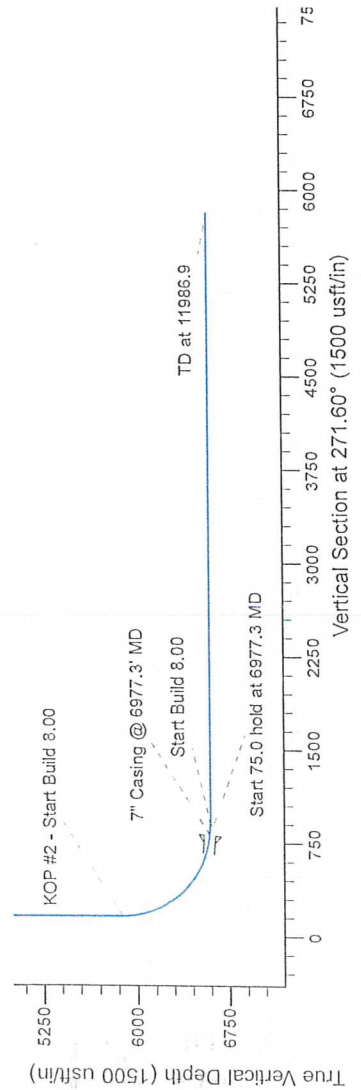
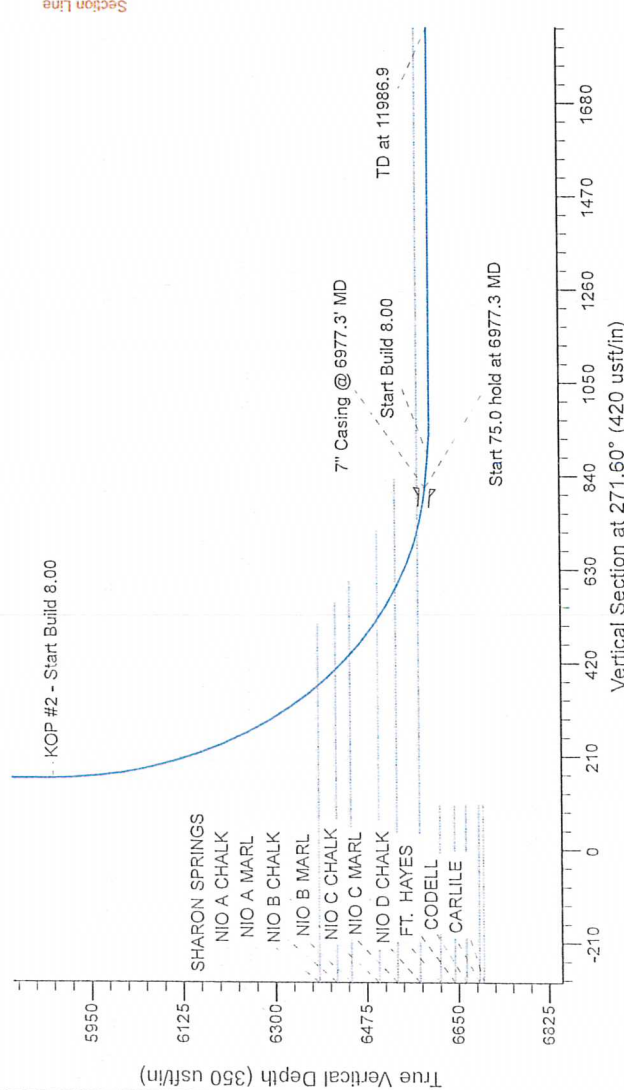
Northern Region Drilling - Working

Geodetic System: US State Plane 1983
Datum: North American Datum 1983
Ellipsoid: GRS 1980
Zone: Colorado Northern Zone
System Datum: Mean Sea Level

SECTION DETAILS

Sec	MD	Incl	Azi	TVD	+N/-S	+E/-W	Dleg	TFace	VSect	Target
1	0.0	0.00	0.00	0.0	0.0	0.0	0.00	0.00	0.0	
2	1800.0	0.00	0.00	1800.0	0.0	0.0	0.00	0.00	0.0	
3	2502.1	14.04	335.56	2495.1	77.9	-35.4	2.00	335.56	37.6	
4	3290.5	0.00	335.56	3259.9	252.1	-114.6	0.00	0.00	121.6	
5	3992.6	0.00	0.00	3955.0	330.0	-150.0	0.00	0.00	159.2	
6	5914.8	0.00	0.00	5877.3	330.0	-150.0	0.00	0.00	159.2	
7	6977.3	85.00	268.31	6590.7	310.7	-803.5	8.00	268.31	811.9	
8	7052.3	85.00	268.31	6597.3	308.5	-878.2	0.00	0.00	886.5	
9	7114.8	90.00	268.31	6600.0	306.6	-840.6	8.00	0.00	948.8	
10	11986.9	90.00	268.31	6600.0	162.6	-5810.5	0.00	0.00	5812.7	

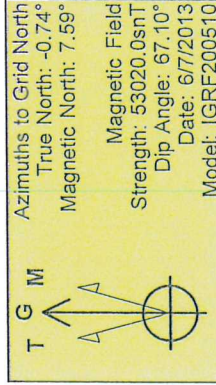
Wells Ranch AE30-65-1HNC BHL 2310'FSL, 385'FEL



Surface: 1978' FSL, 65' FWL Sec.29

Casing Pt: 2314' FSL, 735' FEL Sec.30

BHL: 2310' FSL, 385' FEL Sec.25



WELL DETAILS: Wells Ranch AE30-65-1HNC			
0.0	0.0	0.0	0.0
North	East	Ground Level	Longitude
1410955.76	3318297.27	4757.0	-104.356170
Plan: APD - Rev 0 (Wells Ranch AE30-65-1HNC/Original Drilling)			
Created By: Shalley Jewell	Date: 12/26, September 20 2013	Checked:	Date:
Reviewed:	Date:	Approved:	Date: