

*The Road to Excellence Starts with Safety*

Sold To #: 300721	Ship To #: 300721	Quote #:	Sales Order #: 900378468
Customer: WPX ENERGY ROCKY MOUNTAIN LLC-EBUS		Customer Rep: Wilson, W.C	
Well Name: RWF	Well #: 444-23	API/UWI #: 05-045-18249	
Field: RULSION	City (SAP): TULSA	County/Parish: Garfield	State: Colorado
Lat: N 39.507 deg. OR N 39 deg. 30 min. 26.647 secs.		Long: W 107.854 deg. OR W -108 deg. 8 min. 44.408 secs.	
Contractor: NABORS 577		Rig/Platform Name/Num: NABORS 577	
Job Purpose: Cement Surface Casing			
Well Type: Development Well		Job Type: Cement Surface Casing	
Sales Person: MAYO, MARK		Srvc Supervisor: ARNOLD, EDWARD	MBU ID Emp #: 439784

**Job Personnel**

HES Emp Name	Exp Hrs	Emp #	HES Emp Name	Exp Hrs	Emp #	HES Emp Name	Exp Hrs	Emp #
ARNOLD, EDWARD John	11	439784	LAULAINEN, ROGER Edward	11	524413	RIVET, MARK	11	542231
ROMKEE, DALE Alan	11	488215	SALAZAR, PAUL Omar	11	445614			

**Equipment**

HES Unit #	Distance-1 way	HES Unit #	Distance-1 way	HES Unit #	Distance-1 way	HES Unit #	Distance-1 way
	60 mile	10297346	60 mile	10784064	60 mile	11006314	60 mile
11071559	60 mile	11259882	60 mile	11808849	60 mile		

**Job Hours**

Date	On Location Hours	Operating Hours	Date	On Location Hours	Operating Hours	Date	On Location Hours	Operating Hours
4-21-2013	11	3						

**TOTAL** Total is the sum of each column separately

**Job**

**Job Times**

Formation Name	Formation Depth (MD)	Top	Bottom	Called Out	Date	Time	Time Zone
Form Type			BHST	On Location	20 - Apr - 2013	09:00	MST
Job depth MD	2085. ft		Job Depth TVD	21 - Apr - 2013	01:00		MST
Water Depth			Wk Ht Above Floor	21 - Apr - 2013	08:24		MST
Perforation Depth (MD)	From		To	Job Completed	21 - Apr - 2013	09:40	MST
				Departed Loc	21 - Apr - 2013	11:00	MST

**Well Data**

Description	New / Used	Max pressure psig	Size in	ID in	Weight lbm/ft	Thread	Grade	Top MD ft	Bottom MD ft	Top TVD ft	Bottom TVD ft
-------------	------------	-------------------	---------	-------	---------------	--------	-------	-----------	--------------	------------	---------------

**Tools and Accessories**

Type	Size	Qty	Make	Depth	Type	Size	Qty	Make	Depth	Type	Size	Qty	Make
Guide Shoe					Packer					Top Plug	9 5/8"	1	HES
Float Shoe					Bridge Plug					Bottom Plug			
Float Collar					Retainer					SSR plug set			
Insert Float										Plug Container	9 5/8"	1	HES
Stage Tool										Centralizers			

**Miscellaneous Materials**

Gelling Agt	Conc	Surfactant	Conc	Acid Type	Qty	Conc	%
Treatment Fld	Conc	Inhibitor	Conc	Sand Type	Size		Qty

**Fluid Data**

**Stage/Plug #: 1**

Fluid #	Stage Type	Fluid Name	Qty	Qty uom	Mixing Density lbm/gal	Yield ft3/sk	Mix Fluid Gal/sk	Rate bbl/min	Total Mix Fluid Gal/sk
---------	------------	------------	-----	---------	------------------------	--------------	------------------	--------------	------------------------

**Stage/Plug #: 1**

Fluid #	Stage Type	Fluid Name	Qty	Qty uom	Mixing Density uom	Yield uom	Mix Fluid uom	Rate uom	Total Mix Fluid uom
---------	------------	------------	-----	---------	--------------------	-----------	---------------	----------	---------------------

Stage/Plug #: 1									
Fluid #	Stage Type	Fluid Name	Qty	Qty uom	Mixing Density lbm/gal	Yield ft <sup>3</sup> /sk	Mix Fluid Gal/sk	Rate bbl/min	Total Mix Fluid Gal/sk
1	Fresh Water Spacer		20.00	bbl	.	.0	.0	4	
2	VersaCemGJ1 Lead Cement	VERSACEM (TM) SYSTEM (452010)	330.0	sacks	12.3	2.38	13.75	8	13.75
		13.75 Gal	FRESH WATER						
3	VersaCemGJ1 Tail Cement	VERSACEM (TM) SYSTEM (452010)	160.0	sacks	12.8	2.11	11.75	8	11.75
		11.75 Gal	FRESH WATER						
4	Fresh Water Displacement		159.00	bbl	.	.0	.0	10	
Calculated Values		Pressures		Volumes					
Displacement	159.6	Shut In: Instant		Lost Returns		Cement Slurry	199.9	Pad	
Top Of Cement	SURFACE	5 Min		Cement Returns	30	Actual Displacement	159.6	Treatment	
Frac Gradient		15 Min		Spacers	20	Load and Breakdown		Total Job	379.5
Rates									
Circulating	RIG	Mixing	8	Displacement	10	Avg. Job	9		
Cement Left In Pipe	Amount	43.7 FT	Reason	Shoe Joint					
Frac Ring # 1 @	ID	Frac ring # 2 @	ID	Frac Ring # 3 @	ID	Frac Ring # 4 @	ID		
The Information Stated Herein Is Correct				Customer Representative Signature					

*The Road to Excellence Starts with Safety*

Sold To #: 300721	Ship To #: 300721	Quote #:	Sales Order #: 900378468
Customer: WPX ENERGY ROCKY MOUNTAIN LLC-EBUS	Customer Rep: Wilson, W.C		
Well Name: RWF	Well #: 444-23	API/UWI #: 05-045-18249	
Field: RULSION	City (SAP): TULSA	County/Parish: Garfield	State: Colorado
Legal Description:			
Lat: N 39.507 deg. OR N 39 deg. 30 min. 26.647 secs.		Long: W 107.854 deg. OR W -108 deg. 8 min. 44.408 secs.	
Contractor: NABORS 577	Rig/Platform Name/Num: NABORS 577		
Job Purpose: Cement Surface Casing	Ticket Amount:		
Well Type: Development Well	Job Type: Cement Surface Casing		
Sales Person: MAYO, MARK	Srv Supervisor: ARNOLD, EDWARD	MBU ID Emp #: 439784	

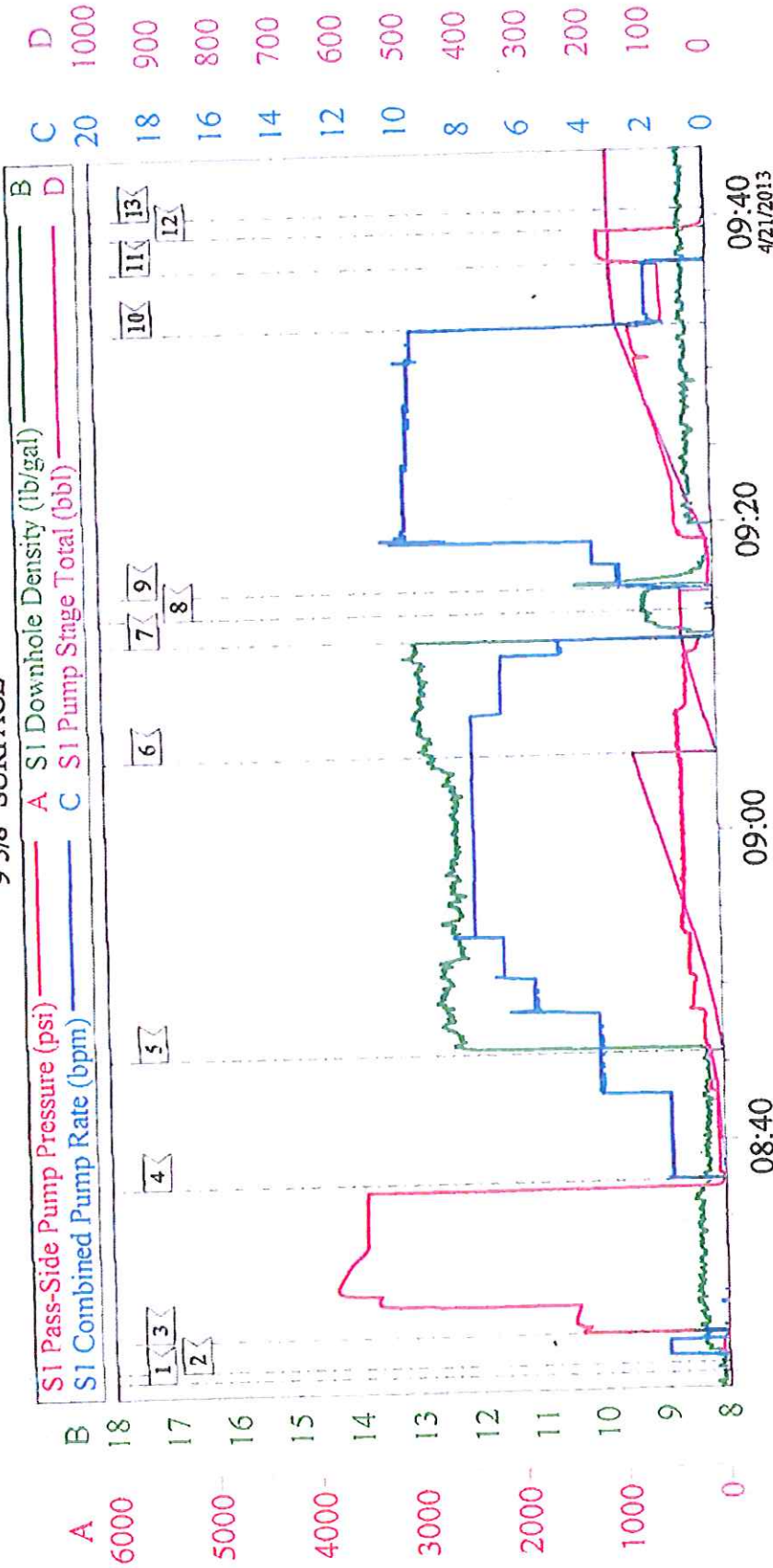
Activity Description	Date/Time	Cht #	Rate bbl/min	Volume bbl		Pressure psig		Comments
				Stage	Total	Tubing	Casing	
Call Out	04/20/2013 21:30							Crew called out.
Pre-Convoy Safety Meeting	04/20/2013 23:15							Including entire cement crew, discuss hazards, route, and safety.
Crew Leave Yard	04/20/2013 23:30							Leave yard for location.
Arrive At Loc	04/21/2013 01:00							
Assessment Of Location Safety Meeting	04/21/2013 07:00							Including entire cement crew, discussed hazards, and rig up.
Pre-Rig Up Safety Meeting	04/21/2013 07:05							
Rig-Up Equipment	04/21/2013 07:15							1 Elite # 9; 1 660 Bulk Truck; 1 hard line to rig floor; 1 line to rig tank; 1 line to upright; 1 9 5/8" compact head.
Rig-Up Completed	04/21/2013 08:00							
Pre-Job Safety Meeting	04/21/2013 08:10							Including everyone on location. Discussed hazards, emergency situations, and job procedure.
Start Job	04/21/2013 08:24							TD 2085; TP 2072; SJ 43.72; OH 13 1/2"; CASING 9 5/8" 32.3# H-40; MUD 10.5 PPG.
Pump Water	04/21/2013 08:25		2	2			58.0	Fresh water ahead to fill lines.
Test Lines	04/21/2013 08:27					3507.0		Test line to psi, Found no leaks, good test.
Pump Spacer 1	04/21/2013 08:37		4	20			138.0	20 BBL's fresh water.

## Cementing Job Log

Activity Description	Date/Time	Cht #	Rate bbl/min	Volume bbl		Pressure psig		Comments
				Stage	Total	Tubing	Casing	
Pump Lead Cement	04/21/2013 08:45		8	139.8			372.0	330 sks Lead cement, 12.3 ppg, 2.38 cf3, 13.75 gal/sk.
Pump Tail Cement	04/21/2013 09:05		8	60.1			380.0	160 sks Tail cement, 12.8 ppg, 2.11 cf3, 11.75 gal/sk.
Shutdown	04/21/2013 09:12							
Drop Plug	04/21/2013 09:14							Plug left Container.
Pump Displacement	04/21/2013 09:15		10	149.6			770.0	Fresh water displacement.
Slow Rate	04/21/2013 09:32		2	10			460.0	Slow rate last 10 BBL's of displacement prior to bumping the plug.
Bump Plug	04/21/2013 09:36				159.6		1005.0	Plug landed.
Check Floats	04/21/2013 09:39							Floats Held. 1 BBL's back. 30 BBL's of good cement to surface.
End Job	04/21/2013 09:40							
Pre-Rig Down Safety Meeting	04/21/2013 09:40							Including entire cement crew, discussed hazards and safety.
Rig-Down Equipment	04/21/2013 09:50							
Pre-Convoy Safety Meeting	04/21/2013 10:45							Including entire cement crew, discussed hazards, route, and safety.
Crew Leave Location	04/21/2013 11:00							
Other	04/21/2013 11:00							Thank You for using Halliburton, Ed Arnold and Crew.

# WPX - RWF 444-23

9 5/8" SURFACE



## Local Event Log

1	START JOB	08:24:59	2	FILL LINES	08:25:35	3	TEST LINES	08:27:34
4	H2O SPACER	08:37:25	5	LEAD CEMENT	08:45:41	6	TAIL CEMENT	09:05:03
7	SHUT DOWN	09:12:32	8	DROP PLUG	09:14:21	9	H2O DISPLACEMENT	09:15:47
10	SLOW RATE	09:32:55	11	BUMP PLUG	09:36:56	12	CHECK FLOATS	09:39:13
13	END JOB	09:40:29						

Customer: WPX	Job Date: 21-Apr-2013	Sales Order #: 900378468
Well Description: RWF 444-23	Job Type: SURFACE	ADC Used: YES
Company Rep: WC WILLSON	Cement Supervisor: ED ARNOLD	Elite #: PAUL SALAZAR

OptiCem v6.4.1  
21-Apr-13 10:1