

Project: Wattenberg Field
Site: AE (Sec.29-T06N-R63W) Weld County, CO
Well: Wells Ranch AE30-67-1BHNA
Wellbore: Original Drilling
Design: APD - Rev 0

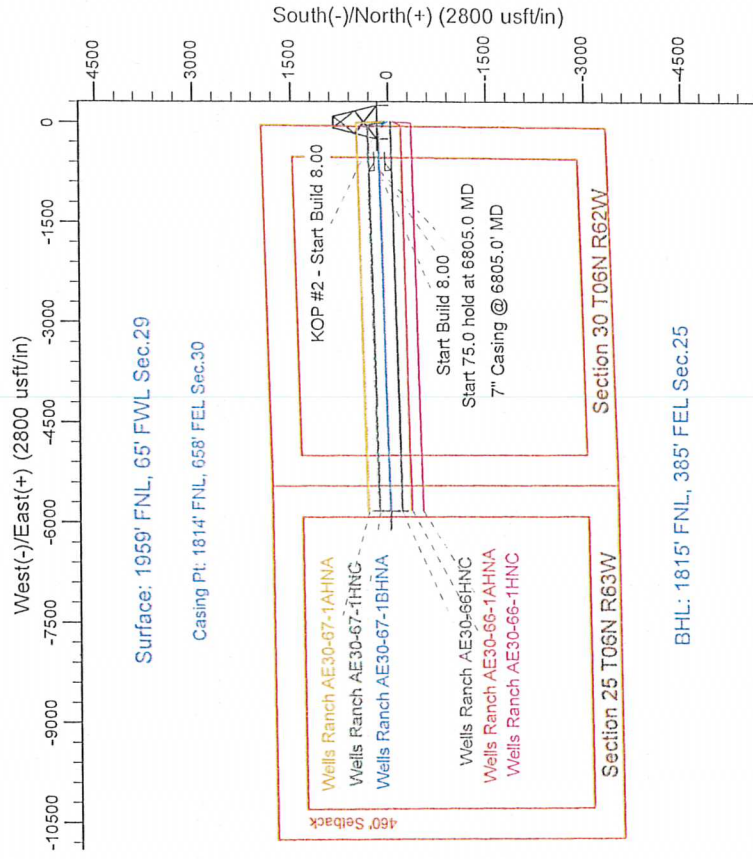
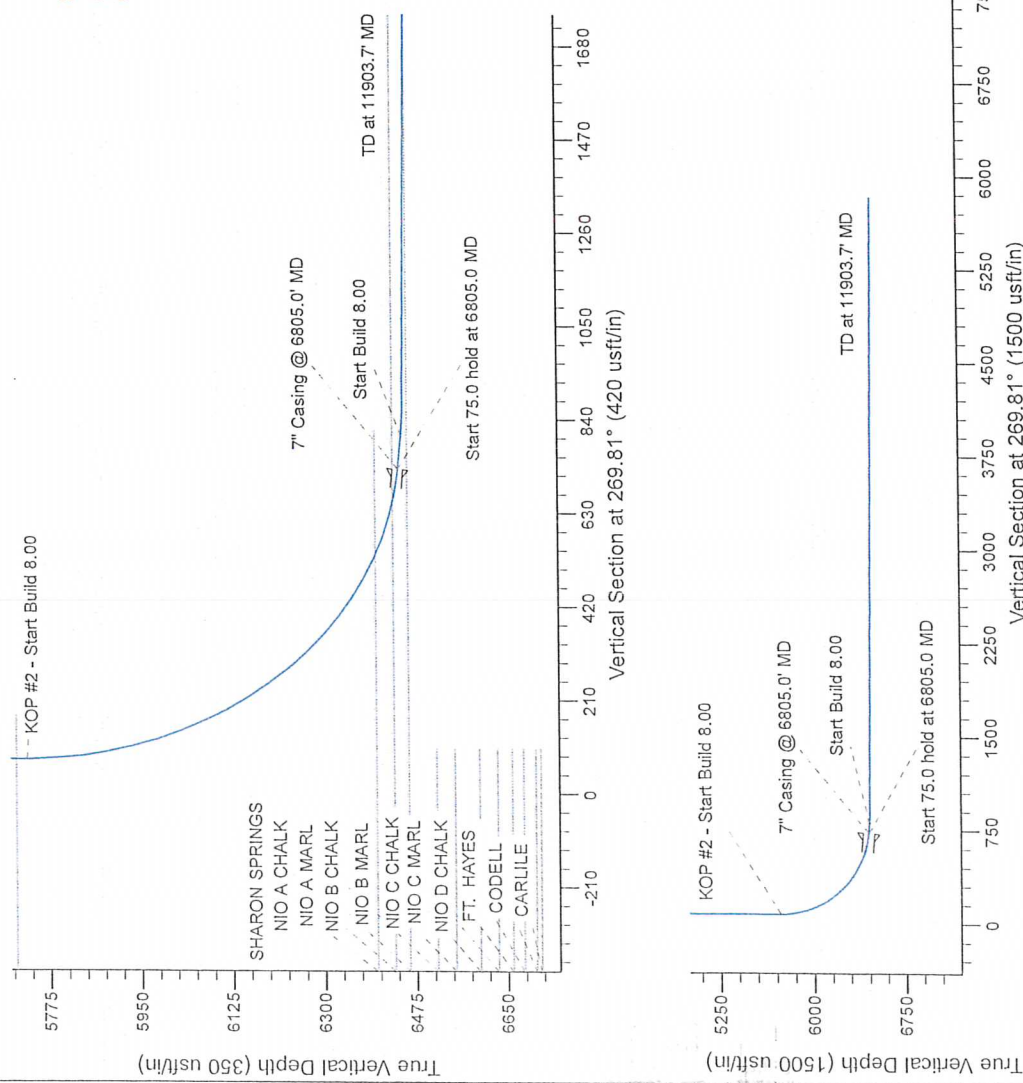
Northern Region Drilling - Working

Geodetic System: US State Plane 1983
Datum: North American Datum 1983
Ellipsoid: GRS 1980
Zone: Colorado Northern Zone
System Datum: Mean Sea Level

SECTION DETAILS

Sec	MD	Inc	Azi	TVD	+N/S	+E/W	Dleg	TFace	VSet	Target
1	0.0	0.00	0.00	1800.0	0.0	0.0	0.00	0.00	0.0	0.0
2	1800.0	0.07	332.49	2399.1	56.2	-29.3	2.00	332.49	29.1	0.0
3	2000.0	12.07	332.49	2565.9	87.8	-45.7	2.00	180.00	45.4	0.0
4	2573.9	12.07	332.49	2655.9	87.8	-45.7	2.00	180.00	45.4	0.0
5	3177.7	0.00	0.00	3165.0	144.0	-75.0	2.00	180.00	74.5	0.0
6	5742.5	0.00	0.00	5729.8	144.0	-75.0	2.00	180.00	74.5	0.0
7	6805.0	85.00	268.37	6443.3	125.4	-728.5	8.00	268.37	728.1	0.0
8	6880.0	85.00	268.37	6449.9	123.3	-803.2	8.00	268.37	802.8	0.0
9	6936.3	89.50	268.37	6452.6	121.7	-859.3	8.00	268.37	858.9	0.0
10	11903.7	89.50	268.37	6456.9	-19.8	-5824.5	0.00	0.00	5824.6	0.0

Wells Ranch AE30-67-1BHNA BHL 1815FNL, 385FEL



Wells Ranch AE30-67-1BHNA
Wells Ranch AE30-66-1AHNA
Wells Ranch AE30-66-1HNC
Wells Ranch AE30-66-1HNC

WELL DETAILS: Wells Ranch AE30-67-1BHNA

	North	East	Ground Level	Latitude	Longitude
0.0	1412318.46	3318304.74	4764.0	40.459580	-104.355080

Plan: APD - Rev 0 (Wells Ranch AE30-67-1BHNA/Original Drilling)

Created By: Shalley Jewell	Date: 11:16, September 23 2013
Checked:	Date:
Reviewed:	Date:
Approved:	Date: