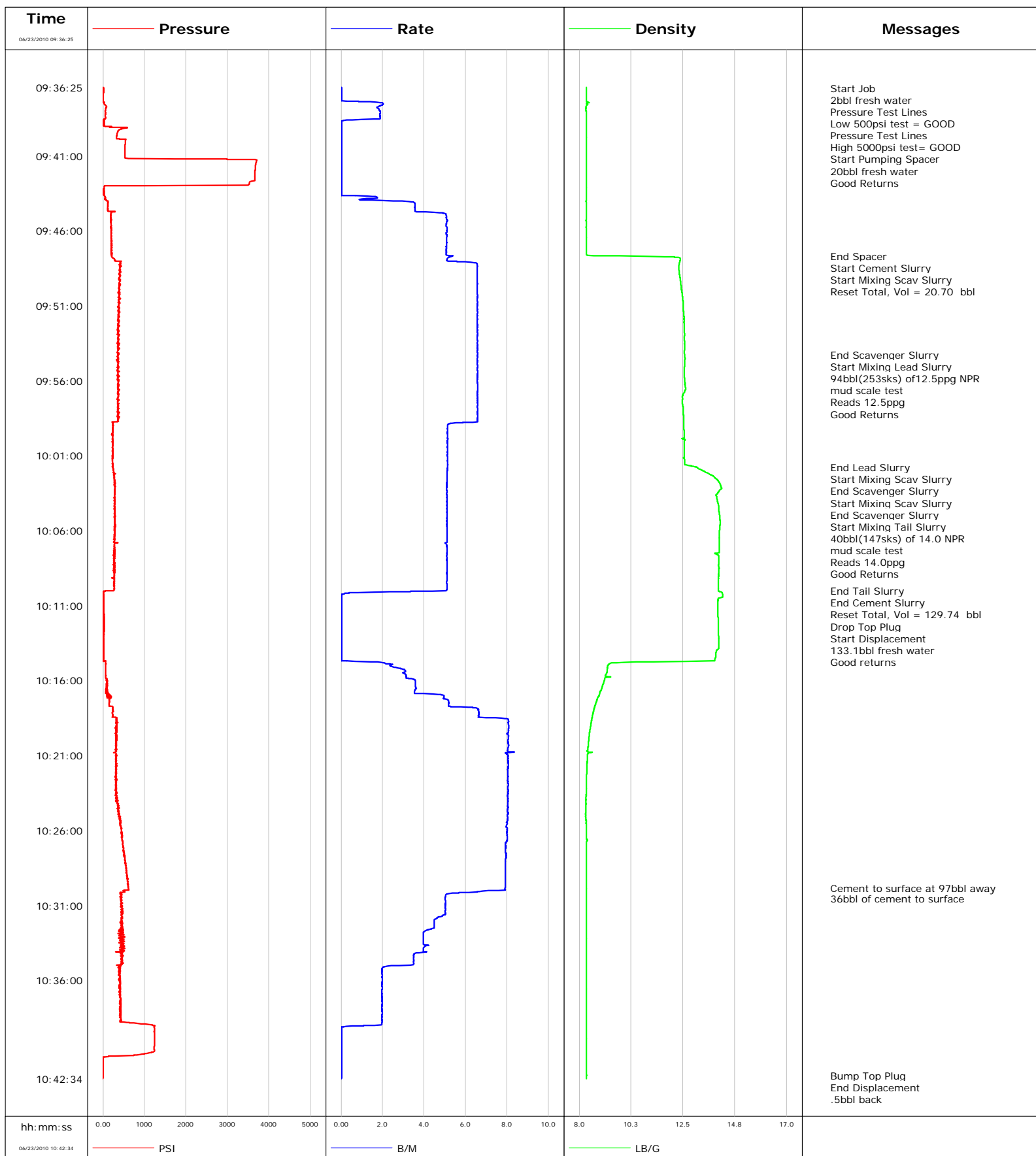


**Well** EF16A-28  
**Field** North Parachute  
**Engineer** Dustin C Krueger  
**Country** United States

**Client** Encana Oil Gas  
**SIR No.** 000347400  
**Job Type** 1765ft 9 5/8 Surface  
**Job Date** 06-23-2010





# Cementing Service Report

				Customer Encana Oil & Gas		Job Number 000347400		
Well EF16A-28 EF16A-28			Location (legal) C28 595		Schlumberger Location Grand Junctin		Job Start Jun/23/2010	
Field North Parachute		Formation Name/Type shale		Deviation 0 deg	Bit Size 12.3 in	Well MD 1765.0 ft		Well TVD 1765.0 ft
County Garfield		State/Province Colorado		BHP	BHST 110 degF	BHCT 89 degF	Pore Press. Gradient	
Well Master 0631190612		API/UWI						
Rig Name NABORS M-13	Drilled For Gas	Service Via Land	Casing/Liner					
			Depth, ft	Size, in	Weight, lb/ft	Grade	Thread	
Offshore Zone	Well Class New	Well Type Development	120.0	16.000	94.0	N/A	N/A	
			1765.0	9.630	36.0	K55	8RD	
Drilling Fluid Type Bentonite		Max. Density 9.40 lb/gal	Plastic Viscosity 47.000 cP	Tubing/Drill Pipe				
			Depth,	Size,	Weight,	Grade	Thread	
Service Line Cementing	Job Type 1765ft 9 5/8 Surface							
Max. Allowed Tub. Press 3500 psi	Max. Allowed Ann. Press 2200 psi	WH Connection Single Cement head	Perforations/Open Hole					
			Top,	Bottom,		No. of Shots	Total Interval	
							Diameter	
			Treat Down Casing	Displacement 133.1 bbl	Packer Type	Packer Depth		
			Tubing Vol. 0.0 bbl	Casing Vol. 136.5 bbl	Annular Vol. 108.0 bbl	Openhole Vol. 254.0 bbl		
Casing/Tubing Secured <input checked="" type="checkbox"/>		1 Hole Vol. Circulated prior to Cement <input checked="" type="checkbox"/>		Casing Tools		Squeeze Job		
Lift Pressure 863 psi				Shoe Type Guide		Squeeze Type		
Pipe Rotated <input type="checkbox"/>		Pipe Reciprocated <input type="checkbox"/>		Shoe Depth 1765.0 ft		Tool Type		
No. Centralizers 20		Top Plugs 1	Bottom Plugs	Stage Tool Type		Tool Depth		
Cement Head Type Single			Stage Tool Depth		Tail Pipe Size			
Job Scheduled For Jun/23/2010 06:30		Arrived on Location Jun/23/2010 06:15	Leave Location Jun/23/2010 12:30	Collar Type Float		Tail Pipe Depth		
				Collar Depth 1721.0 ft		Sqz. Total Vol.		
Date	Time 24-hr clock	Treating Pressure PSI	Flow Rate B/M	Density LB/G	Volume BBL	Message		
06/23/2010	09:33:38					Started Acquisition		
06/23/2010	09:35:53					PRE JOB SAFETY MEETING		
06/23/2010	09:36:25	-0	0.0	8.31	0.0			
06/23/2010	09:36:27					Start Job		
06/23/2010	09:36:27	0	0.0	8.31	0.0			
06/23/2010	09:37:02					2bbl fresh water		
06/23/2010	09:37:02	-3	0.0	8.31	0.0			
06/23/2010	09:37:19					Pressure Test Lines		
06/23/2010	09:37:19	-1	0.0	8.31	0.0			
06/23/2010	09:37:21					Low 500psi test = GOOD		
06/23/2010	09:37:21	-1	0.3	8.31	0.0			
06/23/2010	09:37:24					Pressure Test Lines		
06/23/2010	09:37:24	10	1.4	8.33	0.0			
06/23/2010	09:37:26					High 5000psi test= GOOD		
06/23/2010	09:37:26	17	1.7	8.40	0.1			
06/23/2010	09:37:31					Start Pumping Spacer		
06/23/2010	09:37:31	27	2.0	8.32	0.3			
06/23/2010	09:37:34					20bbl fresh water		
06/23/2010	09:37:34					Good Returns		
06/23/2010	09:37:34	33	2.0	8.37	0.4			
06/23/2010	09:38:38	21	0.1	8.31	2.3			

Well EF16A-28 EF16A-28			Field North Parachute	Job Start Jun/23/2010	Customer Encana Oil & Gas	Job Number 000347400
Date	Time 24-hr clock	Treating Pressure PSI	Flow Rate B/M	Density LB/G	Volume BBL	Message
06/23/2010	09:47:40					End Spacer
06/23/2010	09:47:40	206	5.2	8.62	20.2	
06/23/2010	09:47:43					Start Cement Slurry
06/23/2010	09:47:43					Start Mixing Scav Slurry
06/23/2010	09:47:43	208	5.3	10.83	20.4	
06/23/2010	09:47:46					Reset Total, Vol = 20.70 bbl
06/23/2010	09:47:46	215	5.2	12.13	20.7	
06/23/2010	09:48:38	387	6.6	12.33	25.9	
06/23/2010	09:53:38	388	6.6	12.57	58.8	
06/23/2010	09:54:15					End Scavenger Slurry
06/23/2010	09:54:15	367	6.6	12.57	62.8	
06/23/2010	09:54:16					Start Mixing Lead Slurry
06/23/2010	09:54:16	379	6.6	12.57	62.9	
06/23/2010	09:54:19					94bbl(253sks) of12.5ppg NPR
06/23/2010	09:54:19					mud scale test
06/23/2010	09:54:19	358	6.6	12.58	63.2	
06/23/2010	09:54:20					Reads 12.5ppg
06/23/2010	09:54:20					Good Returns
06/23/2010	09:54:20	358	6.6	12.58	63.4	
06/23/2010	09:58:38	358	6.6	12.53	91.6	
06/23/2010	10:01:47					End Lead Slurry
06/23/2010	10:01:47	246	5.1	13.11	108.0	
06/23/2010	10:01:48					Start Mixing Scav Slurry
06/23/2010	10:01:48	237	5.1	13.13	108.1	
06/23/2010	10:02:03					End Scavenger Slurry
06/23/2010	10:02:03	256	5.1	13.42	109.4	
06/23/2010	10:02:04					Start Mixing Scav Slurry
06/23/2010	10:02:04	253	5.1	13.42	109.5	
06/23/2010	10:02:58					End Scavenger Slurry
06/23/2010	10:02:58	294	5.1	14.13	114.1	
06/23/2010	10:02:59					Start Mixing Tail Slurry
06/23/2010	10:02:59	270	5.1	14.14	114.1	
06/23/2010	10:03:02					40bbl(147sks) of 14.0 NPR
06/23/2010	10:03:02	275	5.1	14.14	114.4	
06/23/2010	10:03:03					mud scale test
06/23/2010	10:03:03					Reads 14.0ppg
06/23/2010	10:03:03	300	5.1	14.15	114.5	
06/23/2010	10:03:04					Good Returns
06/23/2010	10:03:04	281	5.1	14.15	114.6	
06/23/2010	10:03:38	288	5.1	13.93	117.5	
06/23/2010	10:08:38	291	5.1	14.06	143.0	
06/23/2010	10:10:02					End Tail Slurry
06/23/2010	10:10:02	58	5.1	14.03	150.1	
06/23/2010	10:10:04					End Cement Slurry
06/23/2010	10:10:04	18	3.3	14.08	150.2	
06/23/2010	10:10:15					Reset Total, Vol = 129.74 bbl
06/23/2010	10:10:15	8	0.0	14.22	150.4	
06/23/2010	10:10:17					Drop Top Plug
06/23/2010	10:10:17	7	0.0	14.22	150.4	
06/23/2010	10:10:18					Start Displacement
06/23/2010	10:10:18	7	0.0	14.22	150.4	
06/23/2010	10:10:21					133.1bbl fresh water
06/23/2010	10:10:21					Good returns
06/23/2010	10:10:21	7	0.0	14.21	150.4	

Well			Field		Job Start	Customer		Job Number
EF16A-28 EF16A-28			North Parachute		Jun/23/2010	Encana Oil & Gas		000347400
Date	Time 24-hr clock	Treating Pressure PSI	Flow Rate B/M	Density LB/G	Volume BBL	Message		
06/23/2010	10:18:38	340	8.1	8.54	167.6			
06/23/2010	10:23:38	326	8.0	8.30	207.8			
06/23/2010	10:28:38	562	7.9	8.32	247.7			
06/23/2010	10:29:52					Cement to surface at 97bbl away		
06/23/2010	10:29:52	611	7.9	8.32	257.5			
06/23/2010	10:30:34					36bbl of cement to surface		
06/23/2010	10:30:34	440	5.0	8.32	261.7			
06/23/2010	10:33:38	432	4.0	8.32	275.6			
06/23/2010	10:38:38	427	2.0	8.32	287.9			
06/23/2010	10:42:22					Bump Top Plug		
06/23/2010	10:42:22	-7	0.0	8.32	288.7			
06/23/2010	10:42:23					End Displacement		
06/23/2010	10:42:23	-7	0.0	8.32	288.7			
06/23/2010	10:42:26					.5bbl back		
06/23/2010	10:42:26	-8	0.0	8.32	288.7			
06/23/2010	10:42:30					End Job		
06/23/2010	10:42:30	-7	0.0	8.32	288.7			

Post Job Summary

Average Pump Rates,					Volume of Fluid Injected, bbl					
Slurry	N2	Mud	Maximum Rate		Total Slurry 134.0	Mud 0.0	Spacer 20.0	N2		
Treating Pressure Summary, psi					Breakdown Fluid					
Maximum 300	Final 1200	Average 300	Bump Plug to 1200	Breakdown 275	Type FreshWater	Volume 335.0 bbl		Density 8.34 lb/gal		
Avg. N2 Percent		Designed Slurry Volume 134.0 bbl		Displacement 133.1 bbl		Mix Water Temp 70 degF		Cement Circulated to Surface? <input checked="" type="checkbox"/>		Volume 36.0 bbl
								Washed Thru Perfs <input type="checkbox"/>		
Customer or Authorized Representative Charlie Brown				Schlumberger Supervisor Dustin C Krueger				Circulation Lost <input type="checkbox"/>		Job Completed <input checked="" type="checkbox"/>
								-		-