



Oil & Gas Ltd.

Scale 1:240 (5"=100') Imperial
Measured Depth Log

Well Name: Snowmass 32-32
Location: SWSWNE Sec 32-T12S-R47W, Cheyenne County, Colorado
License Number: API: 05-017-07771
Spud Date: 09/24/13
Surface Coordinates: 2566' FNL & 2404' FEL
Lat: 38.96078, Long: -102.69490
Bottom Hole Coordinates: Same
Region: Wildcat
Drilling Completed: 10/03/13
Ground Elevation (ft): 4523'
Logged Interval (ft): 4300' To: 5754'
Formation: Morrow
Type of Drilling Fluid: LSND, Hydro Resources
K.B. Elevation (ft): 4539'
Total Depth (ft): 5762' LTD

Printed by STRIP.LOG from WellSight Systems 1-800-447-1534 www.WellSight.com

OPERATOR

Company: Vecta Oil & Gas Ltd
Address: 575 Union Blvd, Suite 208
Lakewood, CO 80228
Tel. (303) 945-2860

GEOLOGIST

Name: Phillip Willcox
Company: Goolsby Brothers and Associates
Address: 575 Union Blvd., Suite 208
Lakewood, CO 80228

DSTs

Four (4) test (See description column for details)

Comments

- 1) 8 5/8" csg set @ 433' KB.
- 2) Contractor: Wildcat Drilling Rig #1. Toolpusher: Josh Kliesen Company Man: Gary Doke
- 3) Trilobite Drill Stem Testing
- 4) P&A on October 06, 2013

ROCK TYPES

ss_fg+
Anhy
Bent
Brec
Cht
Clyst
Coal

Congl
Dol
Gyp
Igne
Lmst
Meta
Mrlst

Salt
Shale
Shcol
Shgy
Ss
Till
sltst

anhy1
chalk
Carb sh
Arg_ss

ACCESSORIES

MINERAL

Pyr
Anhy
Arggrn
Arg
Bent
Bit
Brecfrag
Calc
Carb
Chtdk
Chtlt
Dol
Feldspar
Ferrpel
Ferr
Glau
Gyp
Hvymin
Kaol

Marl
Minxl
Nodule
Phos
Pyr
Salt
Sandy
Silt
Sil
Sulphur
Tuff

FOSSIL

Algae
Amph
Belm
Bioclst
Brach
Bryozoa
Cephal

Coral
Crin
Echin
Fish
Foram
Fossil
Gastro
Oolite
Ostra
Pelec
Pellet
Pisolite
Plant
Strom

STRINGER

Anhy
Arg
Bent
Coal

Dol
Gyp
Ls
Mrst
Sltstrg
Ssstrg

TEXTURE

Boundst
Chalky
Cryxln
Earthy
Finexln
Grainst
Lithogr
Microxln
Mudst
Packst
Wackest

OTHER SYMBOLS

POROSITY TYPE

Earthy
Fenest
Fracture
Inter
Moldic
Organic
Pinpoint
Vuggy

Moderate
Poor

ROUNDING

Rounded
Subrnd
Subang
Angular

OIL SHOWS

Even
Spotted

near even
Ques
Dead
vspotty

INTERVALS

Core
Dst
casing

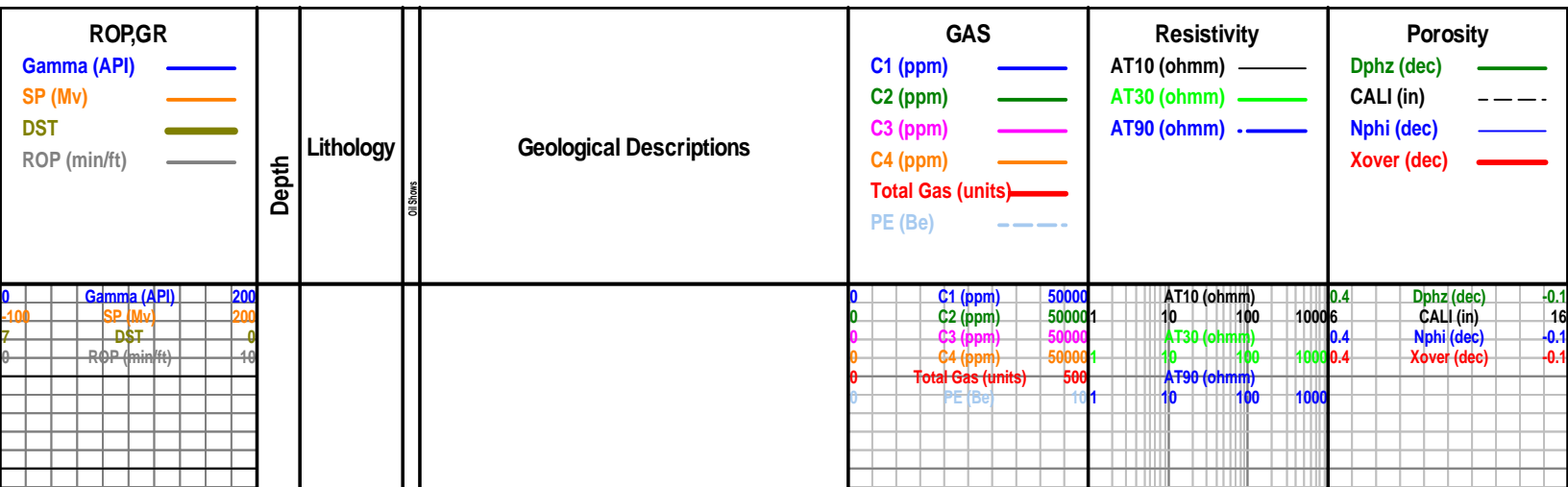
Sidewall
New bit
casingr
casing
Survey
Off bottom
conn
perfs
Survey(red)

SORTING

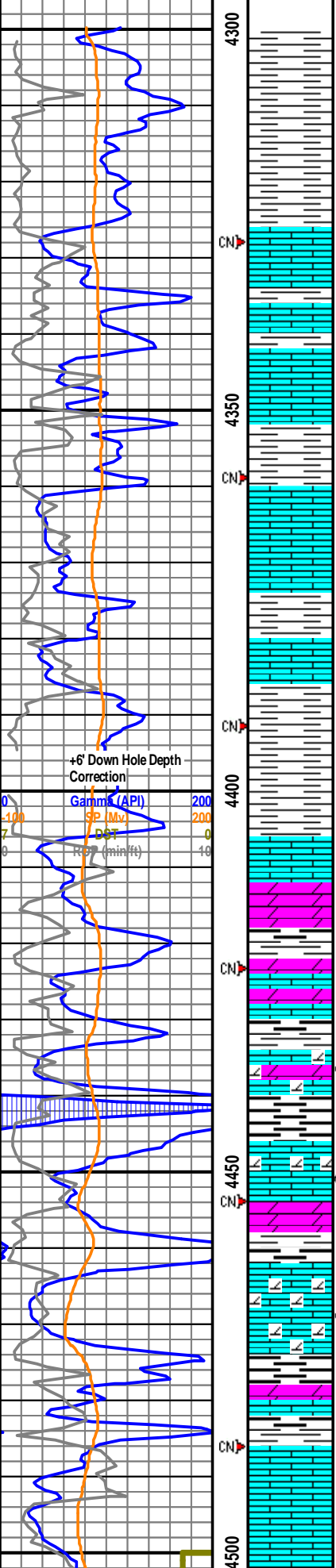
Well

EVENTS

Rft



1 man Wellsite Geologist
on location, 09/28/13



DRLG w/ Bit #2, 7 7/8", HTC, DP506F, 7130789,
PDC, 3X16's, in at 441

BUCKET SAMPLES - poor samples

SH: v p smpl w/ pred uphole rdbd cvgs, sme med
gy smth calc sh is representative of fm.

SH: v p smpl w/ pred uphole rdbd cvgs, A/A

LS: med lt - med gy, lt brngy, mic xln - amorph,
dns, chnky, hd, cln, no vis por, mnrl fluor ip

SH: med gy, vf smth txt, rthy lstr, sbply, frm, calc

LS: v lt gy, v lt yell brn, v lt gybrn, mic xln -
sbchlky - amorph, dns, tab-sbchnky, hd-brttl, no
vis por, mnrl flour ip

SH: med gy, vf -sl slty txt, rthy lstr, sbply, frm,
non calc

SH: med gy, vf smth txt, rthy lstr, sbply, frm, tr
unident v lt gy soapy cly, non - sl calc

LS: v lt gy, v lt yell brn, v lt gybrn, mic xln -
sbchlky - amorph, dns, tab-sbchnky, hd-brttl, no
vis por, mnrl flour

LS: v lt gy, v lt yell brn, v lt gybrn, mic xln -
sbchlky - amorph, dns, tab-sbchnky, hd-brttl, no
vis por, mnrl flour

SH: med gy, vf -sl slty txt, rthy lstr, sbply, frm,
non calc

LS: v lt gy, v lt yell brn, v lt gybrn, mic xln -
sbchlky - amorph, dns, tab-sbchnky, hd-brttl, no
vis por, 30% mod brt yell uni-ptchy fluor, mod fst
strmg cldy cut, fr res rng, mnrl fluor ip

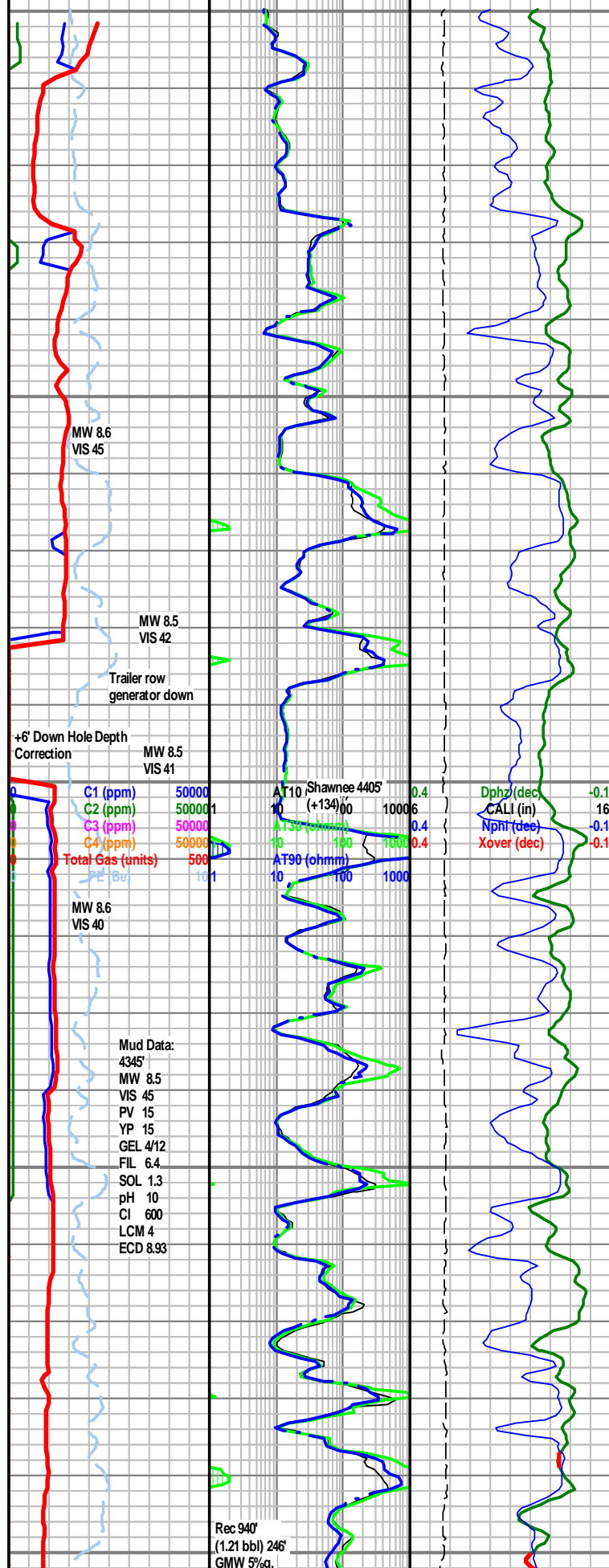
LS: v lt gy, v lt yell brn, v lt gybrn, mic xln -
sbchlky - amorph, dns, tab-sbchnky, hd-brttl, no
vis por, 20% mod brt yell uni-ptchy fluor, mod fst
strmg cldy cut, p res rng, mnrl fluor ip

DOLTC LS: v lt gy, v lt yell brn, v lt gybrn, mic xln
- sbchlky - amorph, dns, tab-sbchnky, hd-brttl, no
vis por, mnrl flour, no cut but p res rng

SH: med gy, tr dk gyblk, vf -sl slty txt, rthy lstr,
sbply, frm, tr carb, non calc

LS: v lt gy, v lt yell brn, v lt gybrn, mic xln -
sbchlky - amorph, dns, tab-sbchnky, hd-brit, no
vis por, mnrl flour

SH: med gy, tr dk gyblk, vf -sl slty txt, rthy lstr,



MW 8.6
VIS 45

MW 8.5
VIS 42

Trailer row
generator down

+6' Down Hole Depth
Correction

MW 8.5
VIS 41

C1 (ppm) 50000
C2 (ppm) 50000
C3 (ppm) 50000
C4 (ppm) 50000
Total Gas (units) 50000

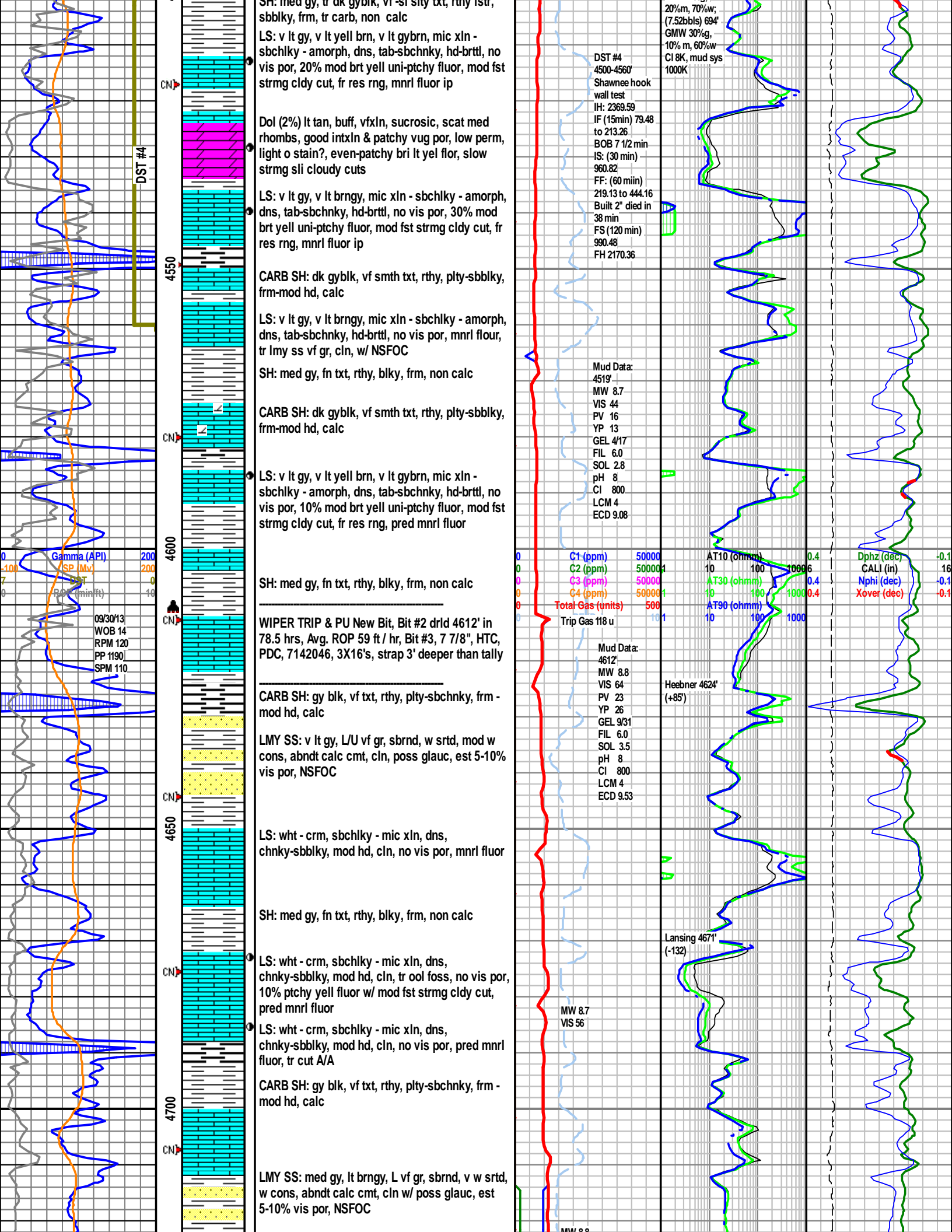
MW 8.6
VIS 40

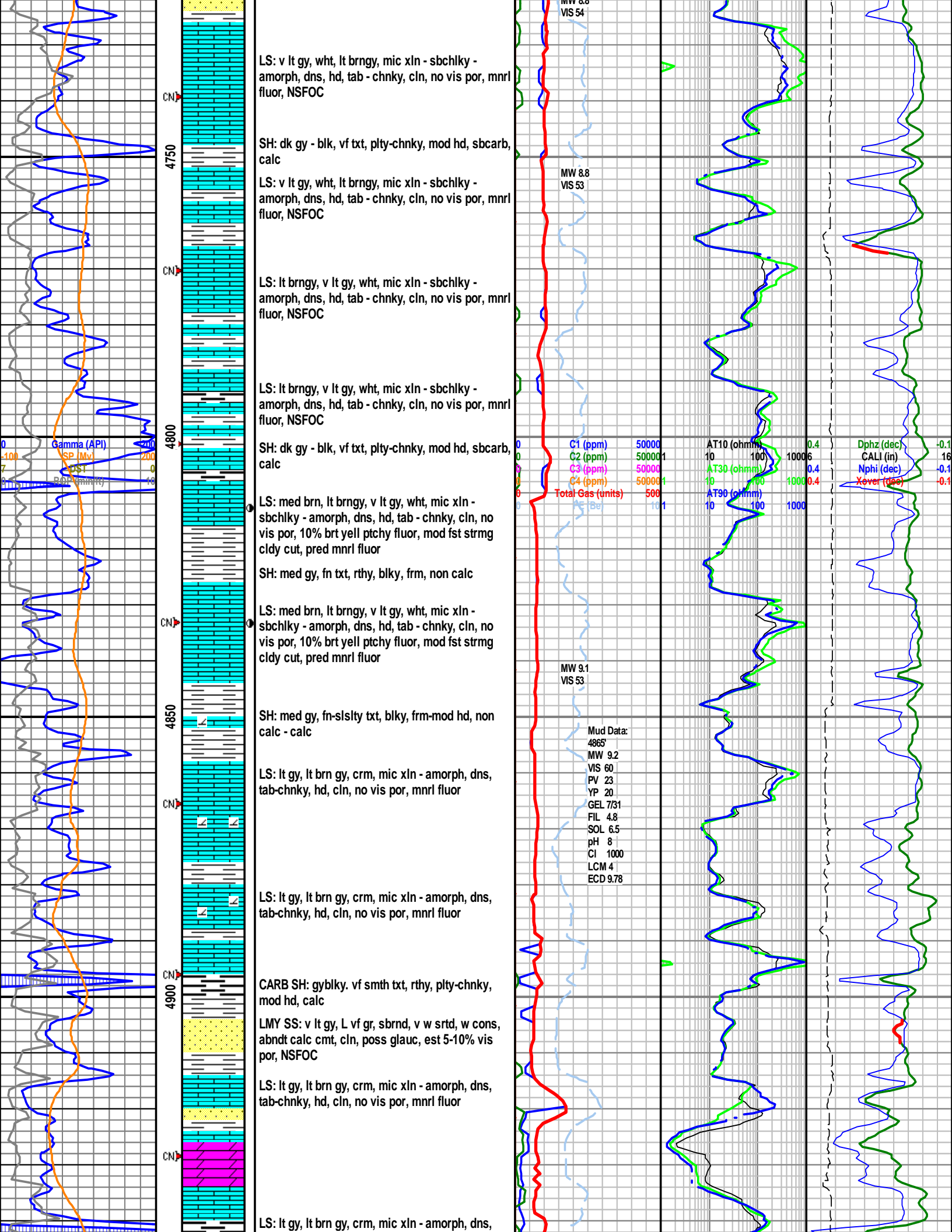
Mud Data:
4345'
MW 8.5
VIS 45
PV 15
YP 15
GEL 4/12
FIL 6.4
SOL 1.3
pH 10
CI 600
LCM 4
ECD 8.93

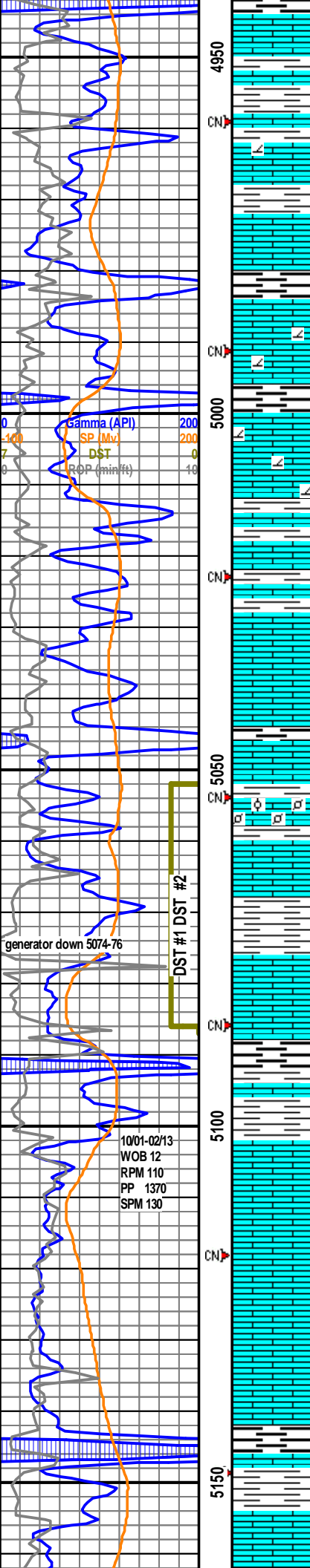
AT10 Shawnee 4405' 0.4
+134' 1000 6
AT30 (ohmm) 0.4
10 100 1000 0.4
AT90 (ohmm) 0.4
10 100 1000

Dphz(dec) -0.1
CALI (in) 16
Nphi(dec) -0.1
Xover(dec) -0.1

Rec 940'
(1.21 bbl) 246'
GMW 5%/a.







tab-chnky, hd, cln, no vis por, mnrl fluor

SH: med gy, fn-slsly txt, blk, frm-mod hd, non calc - calc

LS: mttld lt gy, lt brn gy, crm, mic xln - amorph, dns, tab-chnky, hd, cln, no vis por, mnrl fluor

LS: mttld med lt - lt brn gy, mic xln - amorph, dns, chnky-tab, hd, sl-mod arg ip, no vis por, mnrl fluor

CARB SH: gyblk, vf smth txt, rthy, pty-chnky, mod hd, calc

LS: mttld med lt - lt brn gy, mic xln - amorph, dns, chnky-tab, hd, sl-mod arg ip, no vis por, mnrl fluor

SH: med gy, vf smth txt, pty, frm, sl calc

LS: mttld med lt - lt brn gy, mic xln - amorph, dns, chnky-tab, hd, sl-mod arg ip, no vis por, mnrl fluor

LS: mttld lt - med gy - wht, mic xln - sbchky, dns, frm, v foss w/ pred pell - ool, mnrl fluor

LS: lt brngy, mic xln - chky, dns, hd, cln, tr clr calct rhombs, no vis por, 10% brt yell pchy fluor, g cut, g res rng

LS: lt brngy, mic xln - chky, dns, hd, cln, tr clr calct rhombs, tr intrxn por 10-15%, 30-40% brt yell uni fluor, g fst strmg cldy yell cut, g res rng, sl o odor

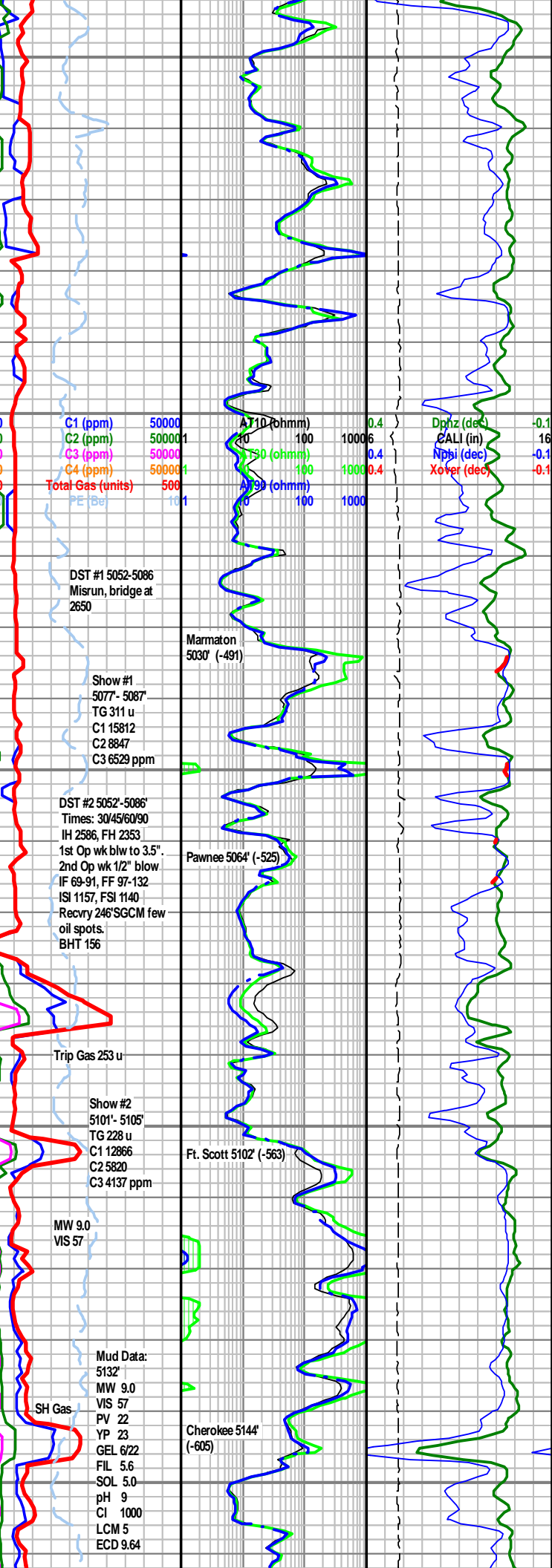
Trip for DST #1, 13 std wiper trip, bridge 2650', DST #1 misrun, LD DST tool, 2nd wiper trip, Trip for DST #2, RR Bit #3

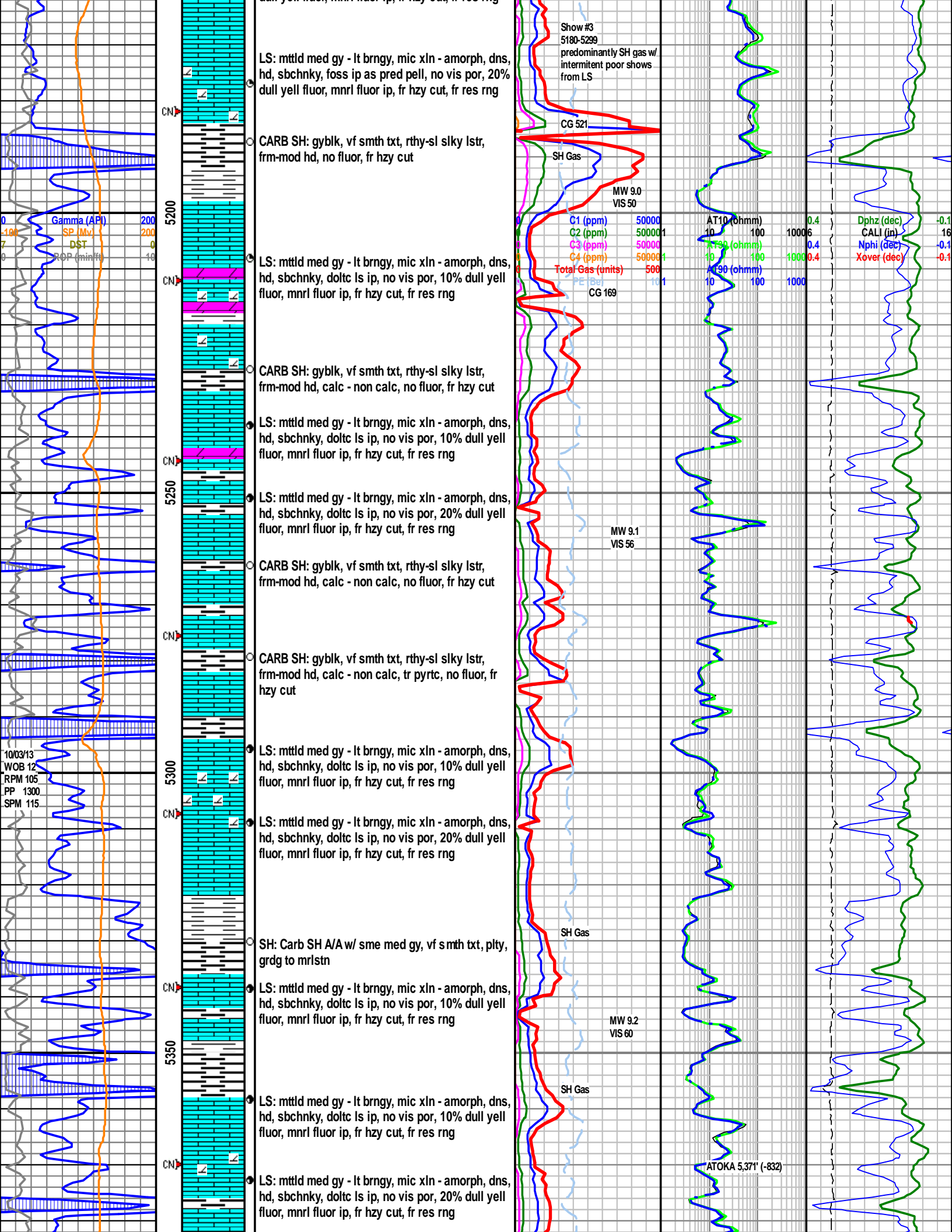
LS: v lt gy, crm, wht, mic xln - amorph - sbchky, dns, hd, sbchnky, no vis por, 10% mod yell pchy fluor, fr strmg hzy cut, fr res rng

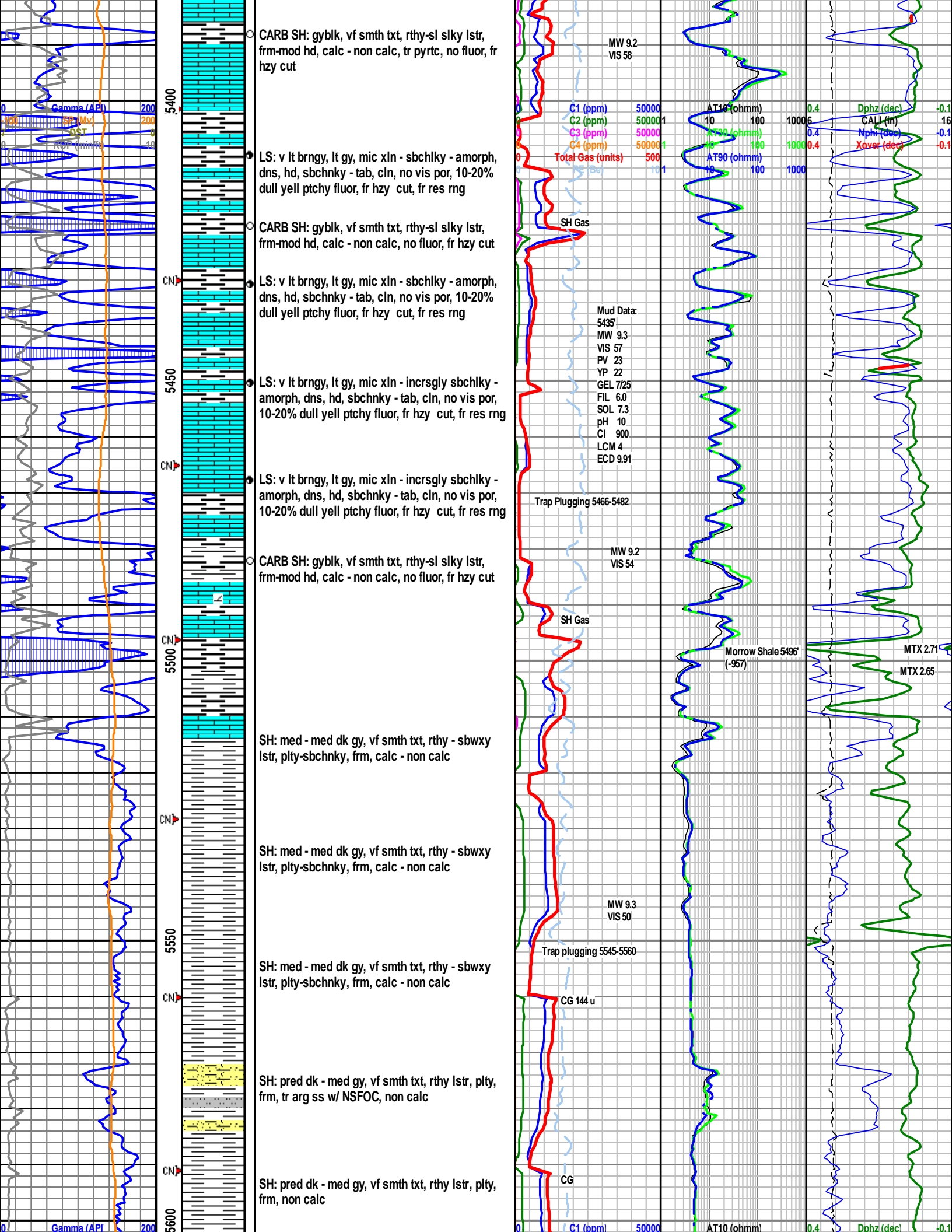
LS: med gy - lt brngy, mic xln - amorph, dns, hd, sbchnky, no vis por, NSFOC

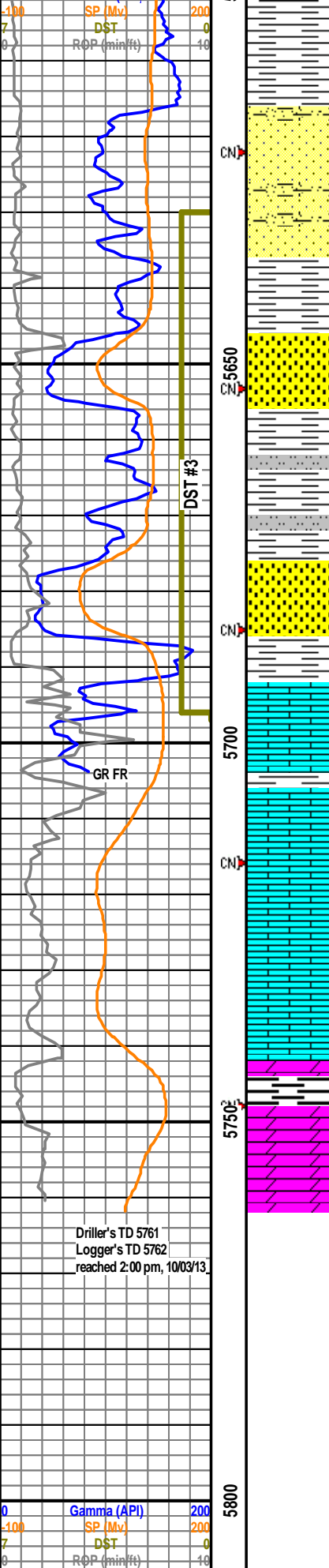
tr CARB SH: gyblk, vf smth txt, rthy, pty-sbchnky, carb, calc

LS: mttld med gy - lt brngy, mic xln - amorph, dns, hd, sbchnky, foss ip as pred pell, no vis por, 30% dull vell fluor, mnrl fluor ip, fr hzy cut, fr res rng









SS: mttld lt - med lt - med gy, L/U vf - L/U fn gr, sbrnd-sbang, mod srtld, sil cmt, w cons, arg - cln ip, 30-50% sft sh inclis - ptchy sh, est 5-10% vis por, NSFOC

SS: mttld lt - med lt - med gy, L/U vf - L/U fn gr - tr med gr, sbrnd-sbang, mod srtld, sil cmt, w cons, arg - cln ip, 30-50% sft sh inclis - ptchy sh, est 5-10% vis por, NSFOC

SS: A/A w/ tr clr sd, L/U med gr, sbang, p srtld, sil cmt, w cons, v cln, NSFOC

SLTST: med gy, rgh slty txt, blk, frm, non calc

SH: pred med - med dk gy, vf smth txt, rthy - sbwxy lstr, plty-sbchnky, frm, calc - non calc

SS: (P Smpl) mttld lt - med lt - med gy, L/U vf - L/U fn gr - tr med gr, sbrnd-sbang, mod srtld, sil cmt, w cons, arg - cln ip, NSFOC

LS: lt brn gy, brn, mic xln - amorph, dns, hd, sbchnky, no vis por, mnrl fluor ip, NSOC

SH: pred med - med dk gy, vf smth txt, rthy - sbwxy lstr, plty-sbchnky, frm, calc - non calc

LS: crm - wht, mic xln - sbchlky, dns, hd, sbchnky, no vis por, mnrl fluor, NSOC

LS: crm - wht, mic xln - sbchlky, dns, hd, sbchnky, cln, no vis por, mnrl fluor, NSOC

CARB SH: gyblk, vf smth txt, plty-chnky, frm, calc

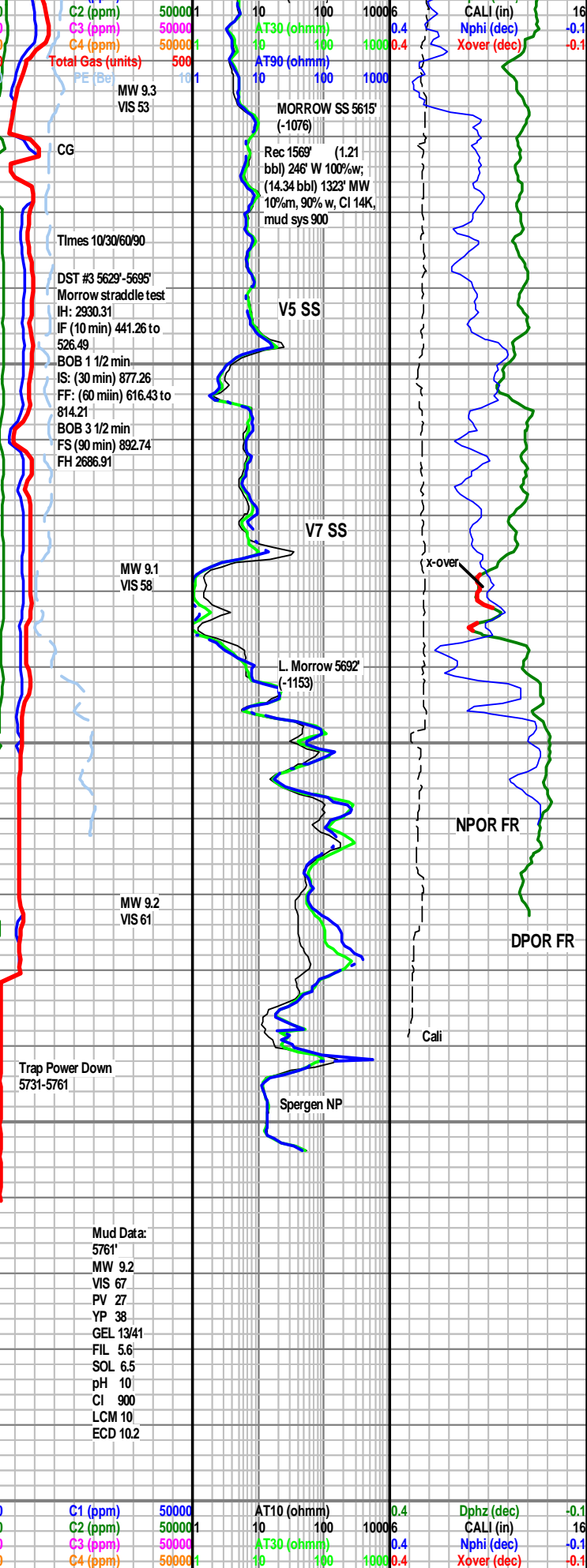
DOL: lt gybrn, mic xln - sucros, dns, hd, sbchnky, cln, no vis por, mnrl fluor ip, NSOC

Wiper Trip, TOH for E-Logs, Wiper Trip, Trip for DST Tools, Run DST #3, Run DST #4, Bit #3 drld 1149' in 30 hrs, Avg ROP 38 ft/hr

Drilling Surveys
441 0.21, 1012 1.79, 1265 0.55, 2307 0.79, 3317 1.27, 3822 0.42

Formation Tops

Shawnee	4405' (+134)
Heebner	4624' (+85')
Lansing	4671' (-132)
Marmaton	5030' (-491)
Pawnee mbr	5064' (-525)
Ft. Scott mbr	5102' (-563)
Cherokee	5144' (-605)
Atoka	5274' (-822)



SS: mttld lt - med lt - med gy, L/U vf - L/U fn gr, sbrnd-sbang, mod srtld, sil cmt, w cons, arg - cln ip, 30-50% sft sh inclis - ptchy sh, est 5-10% vis por, NSFOC

SS: A/A w/ tr clr sd, L/U med gr, sbang, p srtld, sil cmt, w cons, v cln, NSFOC

SS: (P Smpl) mttld lt - med lt - med gy, L/U vf - L/U fn gr - tr med gr, sbrnd-sbang, mod srtld, sil cmt, w cons, arg - cln ip, NSFOC

LS: lt brn gy, brn, mic xln - amorph, dns, hd, sbchnky, no vis por, mnrl fluor ip, NSOC

SH: pred med - med dk gy, vf smth txt, rthy - sbwxy lstr, plty-sbchnky, frm, calc - non calc

LS: crm - wht, mic xln - sbchlky, dns, hd, sbchnky, no vis por, mnrl fluor, NSOC

LS: crm - wht, mic xln - sbchlky, dns, hd, sbchnky, cln, no vis por, mnrl fluor, NSOC

CARB SH: gyblk, vf smth txt, plty-chnky, frm, calc

DOL: lt gybrn, mic xln - sucros, dns, hd, sbchnky, cln, no vis por, mnrl fluor ip, NSOC

Wiper Trip, TOH for E-Logs, Wiper Trip, Trip for DST Tools, Run DST #3, Run DST #4, Bit #3 drld 1149' in 30 hrs, Avg ROP 38 ft/hr

Drilling Surveys
441 0.21, 1012 1.79, 1265 0.55, 2307 0.79, 3317 1.27, 3822 0.42

Formation Tops

Shawnee	4405' (+134)
Heebner	4624' (+85')
Lansing	4671' (-132)
Marmaton	5030' (-491)
Pawnee mbr	5064' (-525)
Ft. Scott mbr	5102' (-563)
Cherokee	5144' (-605)
Atoka	5274' (-822)

SS: mttld lt - med lt - med gy, L/U vf - L/U fn gr, sbrnd-sbang, mod srtld, sil cmt, w cons, arg - cln ip, 30-50% sft sh inclis - ptchy sh, est 5-10% vis por, NSFOC

SS: A/A w/ tr clr sd, L/U med gr, sbang, p srtld, sil cmt, w cons, v cln, NSFOC

SS: (P Smpl) mttld lt - med lt - med gy, L/U vf - L/U fn gr - tr med gr, sbrnd-sbang, mod srtld, sil cmt, w cons, arg - cln ip, NSFOC

LS: lt brn gy, brn, mic xln - amorph, dns, hd, sbchnky, no vis por, mnrl fluor ip, NSOC

SH: pred med - med dk gy, vf smth txt, rthy - sbwxy lstr, plty-sbchnky, frm, calc - non calc

LS: crm - wht, mic xln - sbchlky, dns, hd, sbchnky, no vis por, mnrl fluor, NSOC

LS: crm - wht, mic xln - sbchlky, dns, hd, sbchnky, cln, no vis por, mnrl fluor, NSOC

CARB SH: gyblk, vf smth txt, plty-chnky, frm, calc

DOL: lt gybrn, mic xln - sucros, dns, hd, sbchnky, cln, no vis por, mnrl fluor ip, NSOC

Wiper Trip, TOH for E-Logs, Wiper Trip, Trip for DST Tools, Run DST #3, Run DST #4, Bit #3 drld 1149' in 30 hrs, Avg ROP 38 ft/hr

Drilling Surveys
441 0.21, 1012 1.79, 1265 0.55, 2307 0.79, 3317 1.27, 3822 0.42

Formation Tops

Shawnee	4405' (+134)
Heebner	4624' (+85')
Lansing	4671' (-132)
Marmaton	5030' (-491)
Pawnee mbr	5064' (-525)
Ft. Scott mbr	5102' (-563)
Cherokee	5144' (-605)
Atoka	5274' (-822)

SS: mttld lt - med lt - med gy, L/U vf - L/U fn gr, sbrnd-sbang, mod srtld, sil cmt, w cons, arg - cln ip, 30-50% sft sh inclis - ptchy sh, est 5-10% vis por, NSFOC

SS: A/A w/ tr clr sd, L/U med gr, sbang, p srtld, sil cmt, w cons, v cln, NSFOC

SS: (P Smpl) mttld lt - med lt - med gy, L/U vf - L/U fn gr - tr med gr, sbrnd-sbang, mod srtld, sil cmt, w cons, arg - cln ip, NSFOC

LS: lt brn gy, brn, mic xln - amorph, dns, hd, sbchnky, no vis por, mnrl fluor ip, NSOC

SH: pred med - med dk gy, vf smth txt, rthy - sbwxy lstr, plty-sbchnky, frm, calc - non calc

LS: crm - wht, mic xln - sbchlky, dns, hd, sbchnky, no vis por, mnrl fluor, NSOC

LS: crm - wht, mic xln - sbchlky, dns, hd, sbchnky, cln, no vis por, mnrl fluor, NSOC

CARB SH: gyblk, vf smth txt, plty-chnky, frm, calc

DOL: lt gybrn, mic xln - sucros, dns, hd, sbchnky, cln, no vis por, mnrl fluor ip, NSOC

Wiper Trip, TOH for E-Logs, Wiper Trip, Trip for DST Tools, Run DST #3, Run DST #4, Bit #3 drld 1149' in 30 hrs, Avg ROP 38 ft/hr

Drilling Surveys
441 0.21, 1012 1.79, 1265 0.55, 2307 0.79, 3317 1.27, 3822 0.42

Formation Tops

Shawnee	4405' (+134)
Heebner	4624' (+85')
Lansing	4671' (-132)
Marmaton	5030' (-491)
Pawnee mbr	5064' (-525)
Ft. Scott mbr	5102' (-563)
Cherokee	5144' (-605)
Atoka	5274' (-822)

[illegible][illegible]