

BILL BARRETT CORP

Weld County, CO

State of Colorado 1S-66-36 Pad

STATE OF COLORADO 1S-66-36 1724 CH

Wellbore #1

Plan: Design #1

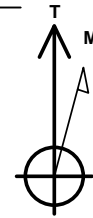
Standard Planning Report

15 October, 2013

BILL BARRETT CORP
STATE OF COLORADO 1S-66-36 1724 CH
Weld County, CO

Geodetic System: US State Plane 1983
Zone: Colorado Northern Zone
WELL @ 5200.0usft (Original Well Elev)
Ground Level: 5180.0
Latitude: 39° 55' 30.112 N
Longitude: 104° 43' 56.690 W

Magnetic North is 8.49° East of True North (Magnetic Declination)



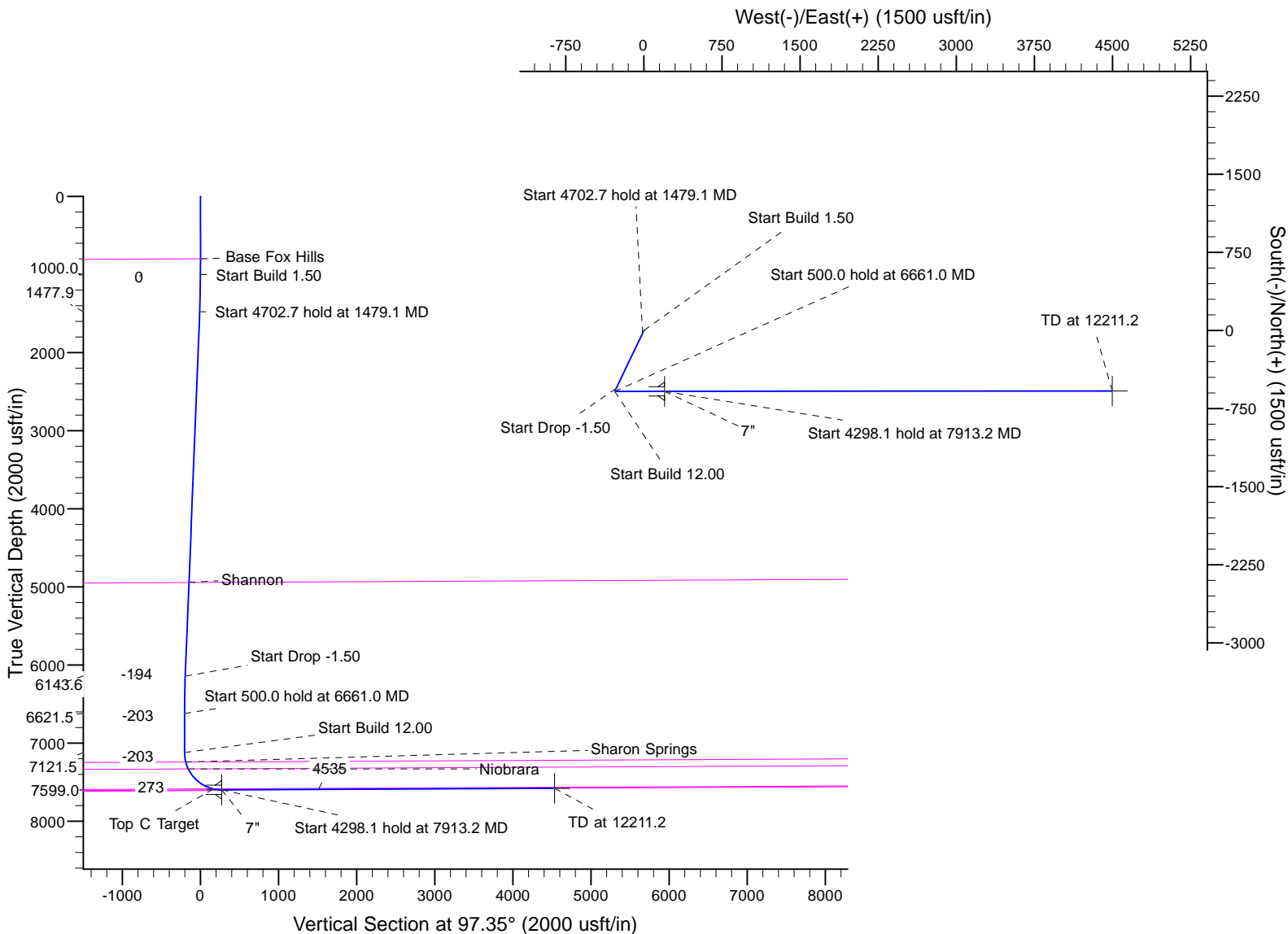
Azimuths to True North
Magnetic North: 8.49°

Magnetic Field
Strength: 52635.8nT
Dip Angle: 66.59°
Date: 10/15/2013
Model: IGRF2010

MD	Inc	Azi	TVD	+N/-S	+E/-W	Dleg	TFace	VSect
0.0	0.00	0.00	0.0	0.0	0.0	0.00	0.00	0.0
1000.0	0.00	0.00	1000.0	0.0	0.0	0.00	0.00	0.0
1479.1	7.19	205.60	1477.9	-27.1	-13.0	1.50	205.60	-9.4
6181.8	7.19	205.60	6143.6	-557.6	-267.2	0.00	0.00	-193.6
6661.0	0.00	0.00	6621.5	-584.7	-280.2	1.50	180.00	-203.0
7161.0	0.00	0.00	7121.5	-584.7	-280.2	0.00	0.00	-203.0
7913.2	90.27	89.95	7599.0	-584.3	199.5	12.00	89.95	272.6
12211.2	90.27	89.95	7579.0	-580.6	4497.5	0.00	0.00	4534.8

FORMATION TOP DETAILS

TVDPath	MDPath	Formation
800.0	800.0	Base Fox Hills
4944.0	4972.7	Shannon
7242.2	7283.0	Sharon Springs
7330.1	7376.8	Niobrara
7587.6	7806.4	Top C Target
7598.2	7883.9	Landing Point



Plan: Design #1 (STATE OF COLORADO 1S-66-36 1724 CH/Wellbore #

Created By: Mike Kirby Date: 15:41, October 15 2013
Checked: Date:
Reviewed: Date:
Approved: x Date: x

Planning Report

Database:	Rocky Mountain R5000 Database	Local Co-ordinate Reference:	Well STATE OF COLORADO 1S-66-36 1724 CH
Company:	BILL BARRETT CORP	TVD Reference:	WELL @ 5200.0usft (Original Well Elev)
Project:	Weld County, CO	MD Reference:	WELL @ 5200.0usft (Original Well Elev)
Site:	State of Colorado 1S-66-36 Pad	North Reference:	True
Well:	STATE OF COLORADO 1S-66-36 1724 CH	Survey Calculation Method:	Minimum Curvature
Wellbore:	Wellbore #1		
Design:	Design #1		

Project	Weld County, CO		
Map System:	US State Plane 1983	System Datum:	Mean Sea Level
Geo Datum:	North American Datum 1983		
Map Zone:	Colorado Northern Zone		

Site	State of Colorado 1S-66-36 Pad			
Site Position:		Northing:	1,216,469.41 usft	Latitude: 39° 55' 30.112 N
From:	Lat/Long	Easting:	3,215,275.68 usft	Longitude: 104° 43' 56.690 W
Position Uncertainty:	0.0 usft	Slot Radius:	13-3/16 "	Grid Convergence: 0.50 °

Well	STATE OF COLORADO 1S-66-36 1724 CH			
Well Position	+N/-S	44.9 usft	Northing:	1,216,514.30 usft
	+E/-W	0.2 usft	Easting:	3,215,275.50 usft
Position Uncertainty	0.0 usft		Wellhead Elevation:	Ground Level: 5,180.0 usft

Wellbore	Wellbore #1				
Magnetics	Model Name	Sample Date	Declination (°)	Dip Angle (°)	Field Strength (nT)
	IGRF2010	10/15/2013	8.49	66.59	52,636

Design	Design #1			
Audit Notes:				
Version:	Phase:	PROTOTYPE	Tie On Depth:	0.0
Vertical Section:	Depth From (TVD) (usft)	+N/-S (usft)	+E/-W (usft)	Direction (°)
	0.0	0.0	0.0	97.35

Plan Sections										
Measured Depth (usft)	Inclination (°)	Azimuth (°)	Vertical Depth (usft)	+N/-S (usft)	+E/-W (usft)	Dogleg Rate (°/100usft)	Build Rate (°/100usft)	Turn Rate (°/100usft)	TFO (°)	Target
0.0	0.00	0.00	0.0	0.0	0.0	0.00	0.00	0.00	0.00	
1,000.0	0.00	0.00	1,000.0	0.0	0.0	0.00	0.00	0.00	0.00	
1,479.1	7.19	205.60	1,477.9	-27.1	-13.0	1.50	1.50	0.00	205.60	
6,181.8	7.19	205.60	6,143.6	-557.6	-267.2	0.00	0.00	0.00	0.00	
6,661.0	0.00	0.00	6,621.5	-584.7	-280.2	1.50	-1.50	0.00	180.00	
7,161.0	0.00	0.00	7,121.5	-584.7	-280.2	0.00	0.00	0.00	0.00	
7,913.2	90.27	89.95	7,599.0	-584.3	199.5	12.00	12.00	0.00	89.95	
12,211.2	90.27	89.95	7,579.0	-580.6	4,497.5	0.00	0.00	0.00	0.00	SOC 1724CH PBHL

Planning Report

Database:	Rocky Mountain R5000 Database	Local Co-ordinate Reference:	Well STATE OF COLORADO 1S-66-36 1724 CH
Company:	BILL BARRETT CORP	TVD Reference:	WELL @ 5200.0usft (Original Well Elev)
Project:	Weld County, CO	MD Reference:	WELL @ 5200.0usft (Original Well Elev)
Site:	State of Colorado 1S-66-36 Pad	North Reference:	True
Well:	STATE OF COLORADO 1S-66-36 1724 CH	Survey Calculation Method:	Minimum Curvature
Wellbore:	Wellbore #1		
Design:	Design #1		

Planned Survey										
Measured Depth (usft)	Inclination (°)	Azimuth (°)	Vertical Depth (usft)	+N/-S (usft)	+E/-W (usft)	Vertical Section (usft)	Dogleg Rate (°/100usft)	Build Rate (°/100usft)	Turn Rate (°/100usft)	
0.0	0.00	0.00	0.0	0.0	0.0	0.0	0.00	0.00	0.00	
100.0	0.00	0.00	100.0	0.0	0.0	0.0	0.00	0.00	0.00	
200.0	0.00	0.00	200.0	0.0	0.0	0.0	0.00	0.00	0.00	
300.0	0.00	0.00	300.0	0.0	0.0	0.0	0.00	0.00	0.00	
400.0	0.00	0.00	400.0	0.0	0.0	0.0	0.00	0.00	0.00	
500.0	0.00	0.00	500.0	0.0	0.0	0.0	0.00	0.00	0.00	
600.0	0.00	0.00	600.0	0.0	0.0	0.0	0.00	0.00	0.00	
700.0	0.00	0.00	700.0	0.0	0.0	0.0	0.00	0.00	0.00	
800.0	0.00	0.00	800.0	0.0	0.0	0.0	0.00	0.00	0.00	
Base Fox Hills										
900.0	0.00	0.00	900.0	0.0	0.0	0.0	0.00	0.00	0.00	
1,000.0	0.00	0.00	1,000.0	0.0	0.0	0.0	0.00	0.00	0.00	
1,100.0	1.50	205.60	1,100.0	-1.2	-0.6	-0.4	1.50	1.50	0.00	
1,200.0	3.00	205.60	1,199.9	-4.7	-2.3	-1.6	1.50	1.50	0.00	
1,300.0	4.50	205.60	1,299.7	-10.6	-5.1	-3.7	1.50	1.50	0.00	
1,400.0	6.00	205.60	1,399.3	-18.9	-9.0	-6.6	1.50	1.50	0.00	
1,479.1	7.19	205.60	1,477.9	-27.1	-13.0	-9.4	1.50	1.50	0.00	
1,500.0	7.19	205.60	1,498.6	-29.4	-14.1	-10.2	0.00	0.00	0.00	
1,600.0	7.19	205.60	1,597.8	-40.7	-19.5	-14.1	0.00	0.00	0.00	
1,700.0	7.19	205.60	1,697.0	-52.0	-24.9	-18.1	0.00	0.00	0.00	
1,800.0	7.19	205.60	1,796.2	-63.3	-30.3	-22.0	0.00	0.00	0.00	
1,900.0	7.19	205.60	1,895.4	-74.5	-35.7	-25.9	0.00	0.00	0.00	
2,000.0	7.19	205.60	1,994.7	-85.8	-41.1	-29.8	0.00	0.00	0.00	
2,100.0	7.19	205.60	2,093.9	-97.1	-46.5	-33.7	0.00	0.00	0.00	
2,200.0	7.19	205.60	2,193.1	-108.4	-51.9	-37.6	0.00	0.00	0.00	
2,300.0	7.19	205.60	2,292.3	-119.7	-57.4	-41.6	0.00	0.00	0.00	
2,400.0	7.19	205.60	2,391.5	-131.0	-62.8	-45.5	0.00	0.00	0.00	
2,500.0	7.19	205.60	2,490.7	-142.2	-68.2	-49.4	0.00	0.00	0.00	
2,600.0	7.19	205.60	2,589.9	-153.5	-73.6	-53.3	0.00	0.00	0.00	
2,700.0	7.19	205.60	2,689.2	-164.8	-79.0	-57.2	0.00	0.00	0.00	
2,800.0	7.19	205.60	2,788.4	-176.1	-84.4	-61.1	0.00	0.00	0.00	
2,900.0	7.19	205.60	2,887.6	-187.4	-89.8	-65.1	0.00	0.00	0.00	
3,000.0	7.19	205.60	2,986.8	-198.7	-95.2	-69.0	0.00	0.00	0.00	
3,100.0	7.19	205.60	3,086.0	-209.9	-100.6	-72.9	0.00	0.00	0.00	
3,200.0	7.19	205.60	3,185.2	-221.2	-106.0	-76.8	0.00	0.00	0.00	
3,300.0	7.19	205.60	3,284.4	-232.5	-111.4	-80.7	0.00	0.00	0.00	
3,400.0	7.19	205.60	3,383.7	-243.8	-116.8	-84.7	0.00	0.00	0.00	
3,500.0	7.19	205.60	3,482.9	-255.1	-122.2	-88.6	0.00	0.00	0.00	
3,600.0	7.19	205.60	3,582.1	-266.3	-127.6	-92.5	0.00	0.00	0.00	
3,700.0	7.19	205.60	3,681.3	-277.6	-133.0	-96.4	0.00	0.00	0.00	
3,800.0	7.19	205.60	3,780.5	-288.9	-138.5	-100.3	0.00	0.00	0.00	
3,900.0	7.19	205.60	3,879.7	-300.2	-143.9	-104.2	0.00	0.00	0.00	
4,000.0	7.19	205.60	3,978.9	-311.5	-149.3	-108.2	0.00	0.00	0.00	
4,100.0	7.19	205.60	4,078.2	-322.8	-154.7	-112.1	0.00	0.00	0.00	
4,200.0	7.19	205.60	4,177.4	-334.0	-160.1	-116.0	0.00	0.00	0.00	
4,300.0	7.19	205.60	4,276.6	-345.3	-165.5	-119.9	0.00	0.00	0.00	
4,400.0	7.19	205.60	4,375.8	-356.6	-170.9	-123.8	0.00	0.00	0.00	
4,500.0	7.19	205.60	4,475.0	-367.9	-176.3	-127.8	0.00	0.00	0.00	
4,600.0	7.19	205.60	4,574.2	-379.2	-181.7	-131.7	0.00	0.00	0.00	
4,700.0	7.19	205.60	4,673.4	-390.5	-187.1	-135.6	0.00	0.00	0.00	
4,800.0	7.19	205.60	4,772.7	-401.7	-192.5	-139.5	0.00	0.00	0.00	
4,900.0	7.19	205.60	4,871.9	-413.0	-197.9	-143.4	0.00	0.00	0.00	
4,972.7	7.19	205.60	4,944.0	-421.2	-201.9	-146.3	0.00	0.00	0.00	

Planning Report

Database:	Rocky Mountain R5000 Database	Local Co-ordinate Reference:	Well STATE OF COLORADO 1S-66-36 1724 CH
Company:	BILL BARRETT CORP	TVD Reference:	WELL @ 5200.0usft (Original Well Elev)
Project:	Weld County, CO	MD Reference:	WELL @ 5200.0usft (Original Well Elev)
Site:	State of Colorado 1S-66-36 Pad	North Reference:	True
Well:	STATE OF COLORADO 1S-66-36 1724 CH	Survey Calculation Method:	Minimum Curvature
Wellbore:	Wellbore #1		
Design:	Design #1		

Planned Survey									
Measured Depth (usft)	Inclination (°)	Azimuth (°)	Vertical Depth (usft)	+N/-S (usft)	+E/-W (usft)	Vertical Section (usft)	Dogleg Rate (°/100usft)	Build Rate (°/100usft)	Turn Rate (°/100usft)
Shannon									
5,000.0	7.19	205.60	4,971.1	-424.3	-203.3	-147.3	0.00	0.00	0.00
5,100.0	7.19	205.60	5,070.3	-435.6	-208.7	-151.3	0.00	0.00	0.00
5,200.0	7.19	205.60	5,169.5	-446.9	-214.1	-155.2	0.00	0.00	0.00
5,300.0	7.19	205.60	5,268.7	-458.1	-219.6	-159.1	0.00	0.00	0.00
5,400.0	7.19	205.60	5,367.9	-469.4	-225.0	-163.0	0.00	0.00	0.00
5,500.0	7.19	205.60	5,467.2	-480.7	-230.4	-166.9	0.00	0.00	0.00
5,600.0	7.19	205.60	5,566.4	-492.0	-235.8	-170.9	0.00	0.00	0.00
5,700.0	7.19	205.60	5,665.6	-503.3	-241.2	-174.8	0.00	0.00	0.00
5,800.0	7.19	205.60	5,764.8	-514.6	-246.6	-178.7	0.00	0.00	0.00
5,900.0	7.19	205.60	5,864.0	-525.8	-252.0	-182.6	0.00	0.00	0.00
6,000.0	7.19	205.60	5,963.2	-537.1	-257.4	-186.5	0.00	0.00	0.00
6,100.0	7.19	205.60	6,062.4	-548.4	-262.8	-190.4	0.00	0.00	0.00
6,181.8	7.19	205.60	6,143.6	-557.6	-267.2	-193.6	0.00	0.00	0.00
6,200.0	6.91	205.60	6,161.7	-559.6	-268.2	-194.3	1.50	-1.50	0.00
6,300.0	5.41	205.60	6,261.1	-569.3	-272.8	-197.7	1.50	-1.50	0.00
6,400.0	3.91	205.60	6,360.7	-576.7	-276.3	-200.3	1.50	-1.50	0.00
6,500.0	2.41	205.60	6,460.6	-581.6	-278.7	-202.0	1.50	-1.50	0.00
6,600.0	0.91	205.60	6,560.5	-584.3	-280.0	-202.9	1.50	-1.50	0.00
6,661.0	0.00	0.00	6,621.5	-584.7	-280.2	-203.0	1.50	-1.50	0.00
6,700.0	0.00	0.00	6,660.5	-584.7	-280.2	-203.0	0.00	0.00	0.00
6,800.0	0.00	0.00	6,760.5	-584.7	-280.2	-203.0	0.00	0.00	0.00
6,900.0	0.00	0.00	6,860.5	-584.7	-280.2	-203.0	0.00	0.00	0.00
7,000.0	0.00	0.00	6,960.5	-584.7	-280.2	-203.0	0.00	0.00	0.00
7,100.0	0.00	0.00	7,060.5	-584.7	-280.2	-203.0	0.00	0.00	0.00
7,161.0	0.00	0.00	7,121.5	-584.7	-280.2	-203.0	0.00	0.00	0.00
7,200.0	4.68	89.95	7,160.5	-584.7	-278.6	-201.5	12.00	12.00	0.00
7,283.0	14.65	89.95	7,242.2	-584.7	-264.7	-187.7	12.00	12.00	0.00
Sharon Springs									
7,300.0	16.68	89.95	7,258.6	-584.7	-260.1	-183.1	12.00	12.00	0.00
7,376.8	25.91	89.95	7,330.1	-584.7	-232.2	-155.5	12.00	12.00	0.00
Niobrara									
7,400.0	28.68	89.95	7,350.7	-584.6	-221.6	-144.9	12.00	12.00	0.00
7,500.0	40.68	89.95	7,432.8	-584.6	-164.8	-88.6	12.00	12.00	0.00
7,600.0	52.68	89.95	7,501.2	-584.5	-92.2	-16.6	12.00	12.00	0.00
7,700.0	64.68	89.95	7,553.1	-584.5	-6.9	68.0	12.00	12.00	0.00
7,800.0	76.68	89.95	7,586.1	-584.4	87.3	161.4	12.00	12.00	0.00
7,806.4	77.45	89.95	7,587.6	-584.4	93.5	167.6	12.00	12.00	0.00
Top C Target									
7,883.9	86.76	89.95	7,598.2	-584.3	170.3	243.7	12.00	12.00	0.00
Landing Point									
7,900.0	88.68	89.95	7,598.8	-584.3	186.3	259.6	12.00	12.00	0.00
7,913.2	90.27	89.95	7,599.0	-584.3	199.5	272.7	11.98	11.98	0.00
7"									
8,000.0	90.27	89.95	7,598.6	-584.2	286.3	358.7	0.00	0.00	0.00
8,100.0	90.27	89.95	7,598.1	-584.1	386.3	457.9	0.00	0.00	0.00
8,200.0	90.27	89.95	7,597.6	-584.0	486.3	557.1	0.00	0.00	0.00
8,300.0	90.27	89.95	7,597.2	-584.0	586.3	656.2	0.00	0.00	0.00
8,400.0	90.27	89.95	7,596.7	-583.9	686.3	755.4	0.00	0.00	0.00
8,500.0	90.27	89.95	7,596.2	-583.8	786.3	854.6	0.00	0.00	0.00
8,600.0	90.27	89.95	7,595.8	-583.7	886.3	953.7	0.00	0.00	0.00
8,700.0	90.27	89.95	7,595.3	-583.6	986.3	1,052.9	0.00	0.00	0.00

Planning Report

Database:	Rocky Mountain R5000 Database	Local Co-ordinate Reference:	Well STATE OF COLORADO 1S-66-36 1724 CH
Company:	BILL BARRETT CORP	TVD Reference:	WELL @ 5200.0usft (Original Well Elev)
Project:	Weld County, CO	MD Reference:	WELL @ 5200.0usft (Original Well Elev)
Site:	State of Colorado 1S-66-36 Pad	North Reference:	True
Well:	STATE OF COLORADO 1S-66-36 1724 CH	Survey Calculation Method:	Minimum Curvature
Wellbore:	Wellbore #1		
Design:	Design #1		

Planned Survey										
Measured Depth (usft)	Inclination (°)	Azimuth (°)	Vertical Depth (usft)	+N/-S (usft)	+E/-W (usft)	Vertical Section (usft)	Dogleg Rate (°/100usft)	Build Rate (°/100usft)	Turn Rate (°/100usft)	
8,800.0	90.27	89.95	7,594.8	-583.5	1,086.3	1,152.1	0.00	0.00	0.00	
8,900.0	90.27	89.95	7,594.4	-583.4	1,186.3	1,251.2	0.00	0.00	0.00	
9,000.0	90.27	89.95	7,593.9	-583.4	1,286.3	1,350.4	0.00	0.00	0.00	
9,100.0	90.27	89.95	7,593.4	-583.3	1,386.3	1,449.6	0.00	0.00	0.00	
9,200.0	90.27	89.95	7,593.0	-583.2	1,486.3	1,548.7	0.00	0.00	0.00	
9,300.0	90.27	89.95	7,592.5	-583.1	1,586.3	1,647.9	0.00	0.00	0.00	
9,400.0	90.27	89.95	7,592.1	-583.0	1,686.3	1,747.0	0.00	0.00	0.00	
9,500.0	90.27	89.95	7,591.6	-582.9	1,786.3	1,846.2	0.00	0.00	0.00	
9,600.0	90.27	89.95	7,591.1	-582.8	1,886.3	1,945.4	0.00	0.00	0.00	
9,700.0	90.27	89.95	7,590.7	-582.8	1,986.3	2,044.5	0.00	0.00	0.00	
9,800.0	90.27	89.95	7,590.2	-582.7	2,086.3	2,143.7	0.00	0.00	0.00	
9,900.0	90.27	89.95	7,589.7	-582.6	2,186.3	2,242.9	0.00	0.00	0.00	
10,000.0	90.27	89.95	7,589.3	-582.5	2,286.3	2,342.0	0.00	0.00	0.00	
10,100.0	90.27	89.95	7,588.8	-582.4	2,386.3	2,441.2	0.00	0.00	0.00	
10,200.0	90.27	89.95	7,588.3	-582.3	2,486.3	2,540.4	0.00	0.00	0.00	
10,300.0	90.27	89.95	7,587.9	-582.2	2,586.3	2,639.5	0.00	0.00	0.00	
10,400.0	90.27	89.95	7,587.4	-582.2	2,686.3	2,738.7	0.00	0.00	0.00	
10,500.0	90.27	89.95	7,587.0	-582.1	2,786.3	2,837.9	0.00	0.00	0.00	
10,600.0	90.27	89.95	7,586.5	-582.0	2,886.3	2,937.0	0.00	0.00	0.00	
10,700.0	90.27	89.95	7,586.0	-581.9	2,986.3	3,036.2	0.00	0.00	0.00	
10,800.0	90.27	89.95	7,585.6	-581.8	3,086.3	3,135.4	0.00	0.00	0.00	
10,900.0	90.27	89.95	7,585.1	-581.7	3,186.3	3,234.5	0.00	0.00	0.00	
11,000.0	90.27	89.95	7,584.6	-581.6	3,286.3	3,333.7	0.00	0.00	0.00	
11,100.0	90.27	89.95	7,584.2	-581.6	3,386.3	3,432.9	0.00	0.00	0.00	
11,200.0	90.27	89.95	7,583.7	-581.5	3,486.3	3,532.0	0.00	0.00	0.00	
11,300.0	90.27	89.95	7,583.2	-581.4	3,586.3	3,631.2	0.00	0.00	0.00	
11,400.0	90.27	89.95	7,582.8	-581.3	3,686.3	3,730.4	0.00	0.00	0.00	
11,500.0	90.27	89.95	7,582.3	-581.2	3,786.3	3,829.5	0.00	0.00	0.00	
11,600.0	90.27	89.95	7,581.8	-581.1	3,886.3	3,928.7	0.00	0.00	0.00	
11,700.0	90.27	89.95	7,581.4	-581.1	3,986.3	4,027.8	0.00	0.00	0.00	
11,800.0	90.27	89.95	7,580.9	-581.0	4,086.3	4,127.0	0.00	0.00	0.00	
11,900.0	90.27	89.95	7,580.5	-580.9	4,186.3	4,226.2	0.00	0.00	0.00	
12,000.0	90.27	89.95	7,580.0	-580.8	4,286.3	4,325.3	0.00	0.00	0.00	
12,100.0	90.27	89.95	7,579.5	-580.7	4,386.3	4,424.5	0.00	0.00	0.00	
12,200.0	90.27	89.95	7,579.1	-580.6	4,486.3	4,523.7	0.00	0.00	0.00	
12,211.2	90.27	89.95	7,579.0	-580.6	4,497.5	4,534.8	0.00	0.00	0.00	

Design Targets									
Target Name	Dip Angle (°)	Dip Dir. (°)	TVD (usft)	+N/-S (usft)	+E/-W (usft)	Northing (usft)	Easting (usft)	Latitude	Longitude
SOC 1724CH PBHL	0.00	0.00	7,579.0	-580.6	4,497.5	1,215,972.69	3,219,777.86	39° 55' 24.814 N	104° 42' 58.959 W
- hit/miss target									
- plan misses target center by 0.1usft at 12211.2usft MD (7579.0 TVD, -580.6 N, 4497.5 E)									
- Point									
SOC 1724 CH LP	0.00	0.00	7,599.0	-584.3	199.5	1,215,931.70	3,215,480.10	39° 55' 24.780 N	104° 43' 54.126 W
- hit/miss target									
- plan misses target center by 0.1usft at 7913.2usft MD (7599.0 TVD, -584.3 N, 199.5 E)									
- Point									

Planning Report

Database:	Rocky Mountain R5000 Database	Local Co-ordinate Reference:	Well STATE OF COLORADO 1S-66-36 1724 CH
Company:	BILL BARRETT CORP	TVD Reference:	WELL @ 5200.0usft (Original Well Elev)
Project:	Weld County, CO	MD Reference:	WELL @ 5200.0usft (Original Well Elev)
Site:	State of Colorado 1S-66-36 Pad	North Reference:	True
Well:	STATE OF COLORADO 1S-66-36 1724 CH	Survey Calculation Method:	Minimum Curvature
Wellbore:	Wellbore #1		
Design:	Design #1		

Casing Points					
Measured Depth (usft)	Vertical Depth (usft)	Name	Casing Diameter (")	Hole Diameter (")	
7,913.2	7,599.0	7"	7	8-3/4	

Formations						
Measured Depth (usft)	Vertical Depth (usft)	Name	Lithology	Dip (°)	Dip Direction (°)	
800.0	800.0	Base Fox Hills		-0.27	89.95	
4,972.7	4,944.0	Shannon		-0.27	89.95	
7,283.0	7,242.2	Sharon Springs		-0.27	89.95	
7,376.8	7,330.1	Niobrara		-0.27	89.95	
7,806.4	7,587.6	Top C Target		-0.27	89.95	
7,883.9	7,598.2	Landing Point		-0.27	89.95	