

## WELLBORE DIAGRAM

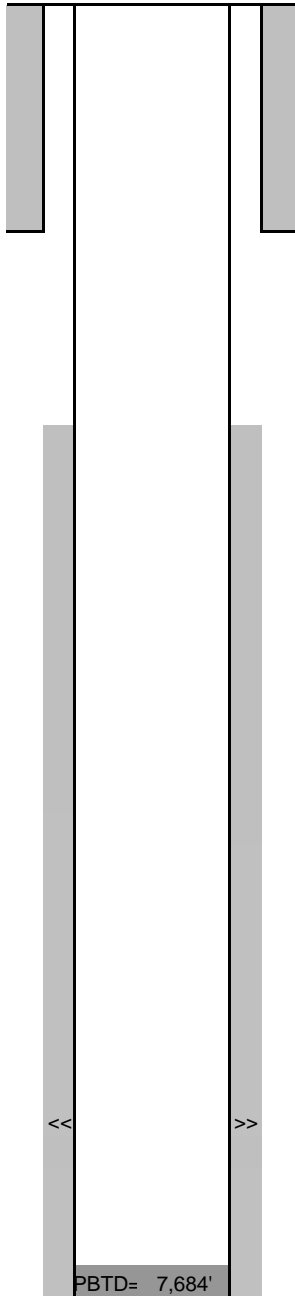
Directions: Hwy 392 & WCR 21, north 2.25, west into location

### Bayswater E&P Bower 10-3

NESE Sec 3-T6N-R67W  
SHL: 1980' FSL, 565' FEL  
BHL: 1950' FSL, 1938' FEL  
Weld County CO  
05-123-36735

Updated  
4/22/2013  
MMA

G.L.= 4942  
K.B.= 4958  
16



8-5/8" 24# set at 1138'  
Cmt'd w/ 425 sx to Surf.

TOC: 1,390'  
CBL

**Codell:** 7,576'-7,592', 4 SPF, 64 shots  
Frac on 4/22/2013 with 274,137 gals of slickwater and 181,920 lbs of 30/50.

4 1/2", 11.6# LTC 7737' (7-7/8" O.H.)  
Cmt'd w/ 930 sx

PBD= 7,684'  
TD MD= 7,737'  
TD VD= 7,569'