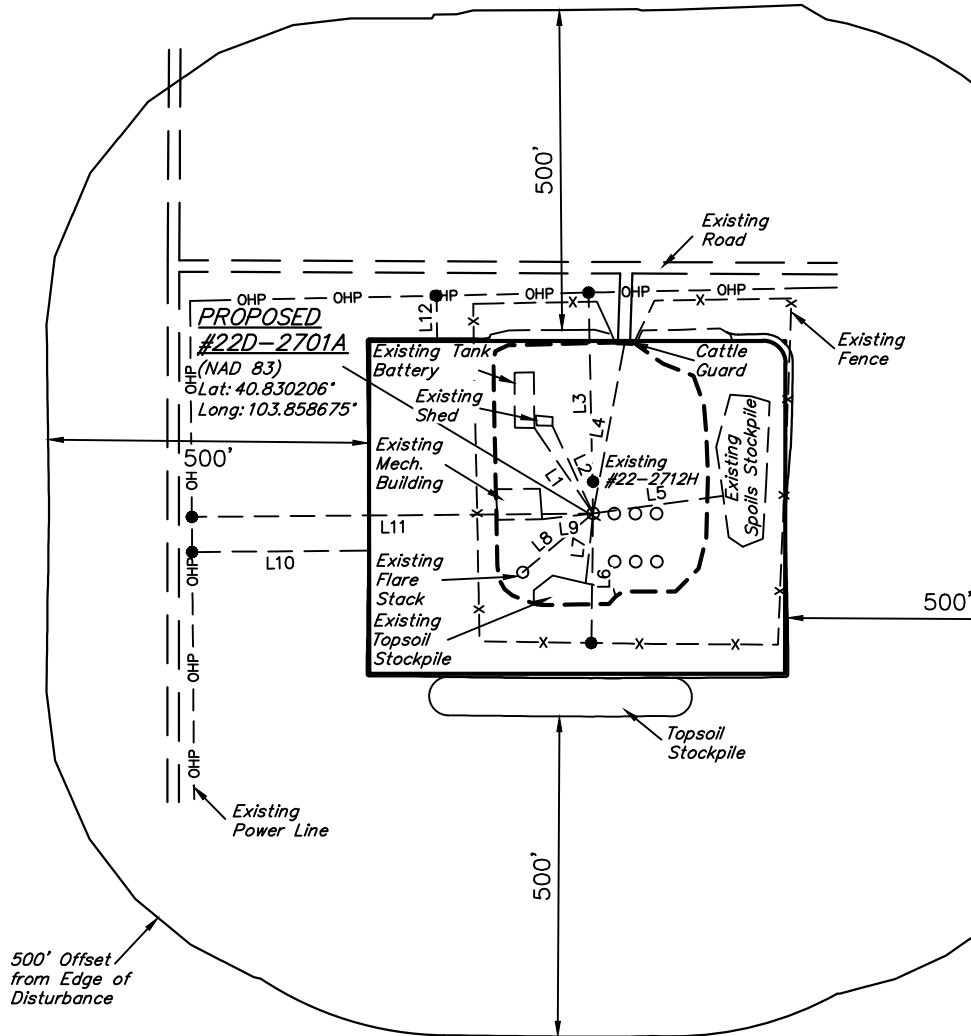


# WHITING OIL & GAS CORP.

## LOCATION DRAWING FOR

RAZOR #22D-2701A, #22D-2703A,  
#22D-2205A, #22D-2207A, #22D-2704B, #22D-2206B,  
#22D-2208B ON EXISTING RAZOR #22-2712H  
SECTION 22, T10N, R58W, 6th P.M.  
NW 1/4 NW 1/4

SCALE: 1" = 300'  
DATE: 04-18-13  
DRAWN BY: B.D.H.  
REVISED: 06-03-13  
REVISED: 09-18-13



| LINE TABLE |           |        |
|------------|-----------|--------|
| LINE       | DIRECTION | LENGTH |
| L1         | N34°W     | 162'   |
| L2         | N25°W     | 151'   |
| L3         | N01°W     | 345'   |
| L4         | N11°E     | 269'   |
| L5         | N82°E     | 205'   |
| L6         | S01°W     | 202'   |
| L7         | S06°W     | 109'   |
| L8         | S50°W     | 143'   |
| L9         | S84°W     | 80'    |
| L10        | WEST      | 275'   |
| L11        | WEST      | 627'   |
| L12        | N01°W     | 67'    |