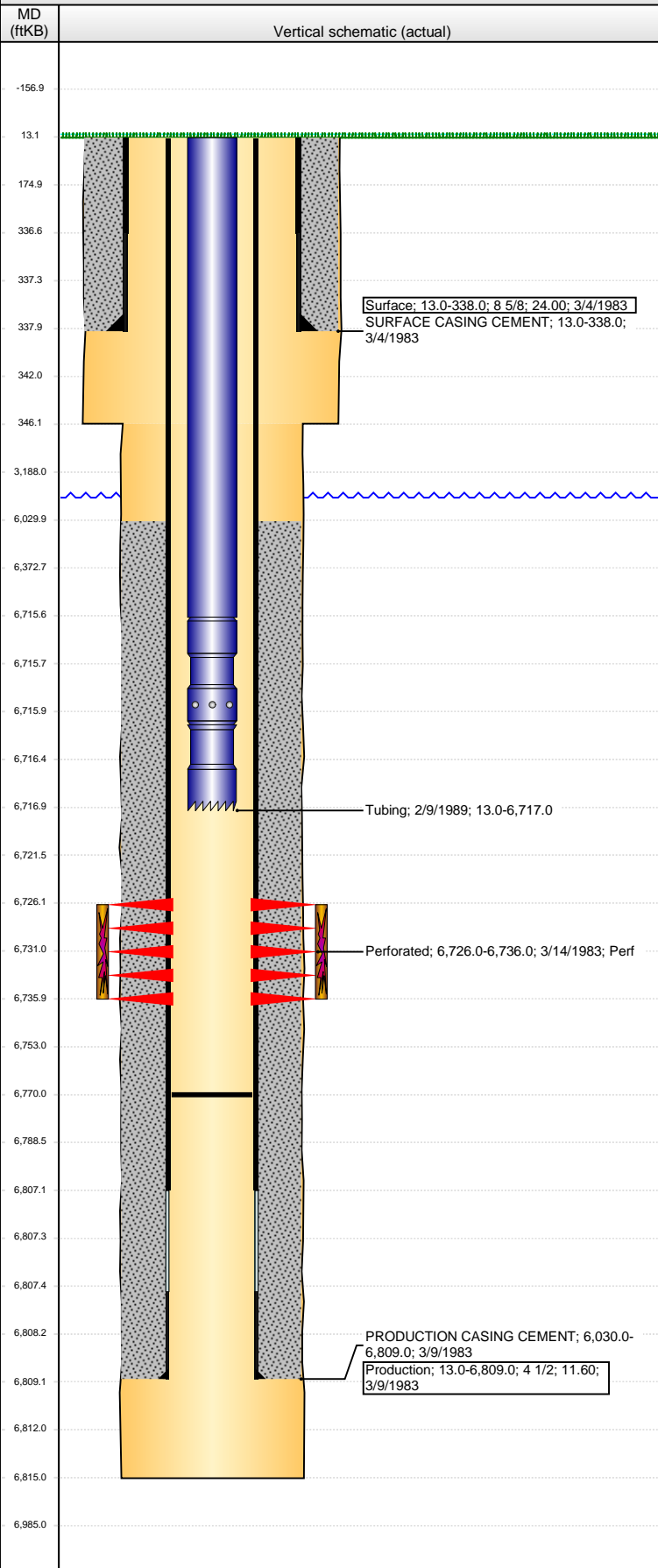


**Well Name: HOSHIKO 01**

VERTICAL - ORIGINAL HOLE, 10/17/2013 11:02:17 AM



## Well Header

API	Business Unit	District	Well Config
05-123-11071	WATTENBERG	15	VERTICAL
Original KB Elevation (ft)	KB - GL / MSL (ftKB)	Spud Date	P & A Date
4,626.00	13.00	3/4/1983	

Comment  
VERY LIMITED DATA IN WELL FILE. USED STATE REPORTS. PRODUCTION CASING CEMENT ESTIMATED.

## Directions To Well

## Congressional Location

Quarter 1	Quarter 2	Quarter 3	Quarter 4	Section	Township	Twnshp N...	Range	Rng E/W Dir
		NE	SE	35	5	N	64	W

## Bottom Hole Location

North-South Distance (ft)	From N or S Line	East-West Distance (ft)	From E or W Line

## Plug Back Total Depths

Date	Depth (ftKB)	Method	Com
3/9/1983	6,770.0	CASED HOLE LOG	

## Wellbore Sections

Section Des	Size (in)	Act Top (ftKB)	Act Btm (ftKB)
SURFACE	12 1/4	13.0	346.0
PRODUCTION	8 5/8	346.0	6,815.0

## Zone Statuses

Zone Name	Status Date	Status	Job
CODELL	3/29/1983	PR	DRILLING/COMPLETION - ORIGINAL, 3/4/1983 00:00

## Casing Strings

### Surface, 338.0ftKB

Casing Description	Run Date	OD (in)	Wt/Len (l...)	Grade	Top (ftKB)	MD (ftKB)
Surface	3/4/1983	8 5/8	24.00		13.0	338.0

### Production, 6,809.0ftKB

Casing Description	Run Date	OD (in)	Wt/Len (l...)	Grade	Top (ftKB)	MD (ftKB)
Production	3/9/1983	4 1/2	11.60		13.0	6,809.0

## Cement

Description	Top Depth (ftKB)	Bottom Depth (ftKB)
SURFACE CASING CEMENT	13.0	338.0
Description	Top Depth (ftKB)	Bottom Depth (ftKB)
PRODUCTION CASING CEMENT	6,030.0	6,809.0

## Tubing Components

Item Des	OD (in)	Wt (lb/ft)	Grade	Jts	Len (ft)	Btm (ftKB)	Btm (TVD) (ftKB)
Tubing	2 3/8	4.70	J-55	211	6,702.50	6,715.5	
Seating Nipple	2 3/8	1.10			0.50	6,716.0	
Notched collar	2 3/8				1.00	6,717.0	

## Perforation Data

Zone	Bnch/St g	Entered Shot Total	Top (ftKB)	Btm (ftKB)	Date
CODELL, ORIGINAL HOLE		30	6,726.00	6,736.00	3/14/1983

## Stimulations & Treatments

Date	Zone	Primary Job Type
3/18/1983	CODELL, ORIGINAL HOLE	DRILLING/COMPLETION - ORIGINAL
Technical Result	Tech Result Details	Tech Result Note

## Comment

## Other In Hole

Run Date	Des	OD (in)	Top (ftKB)	Btm (ftKB)

## Logs

Date	Type	Top (ftKB)	Btm (ftKB)