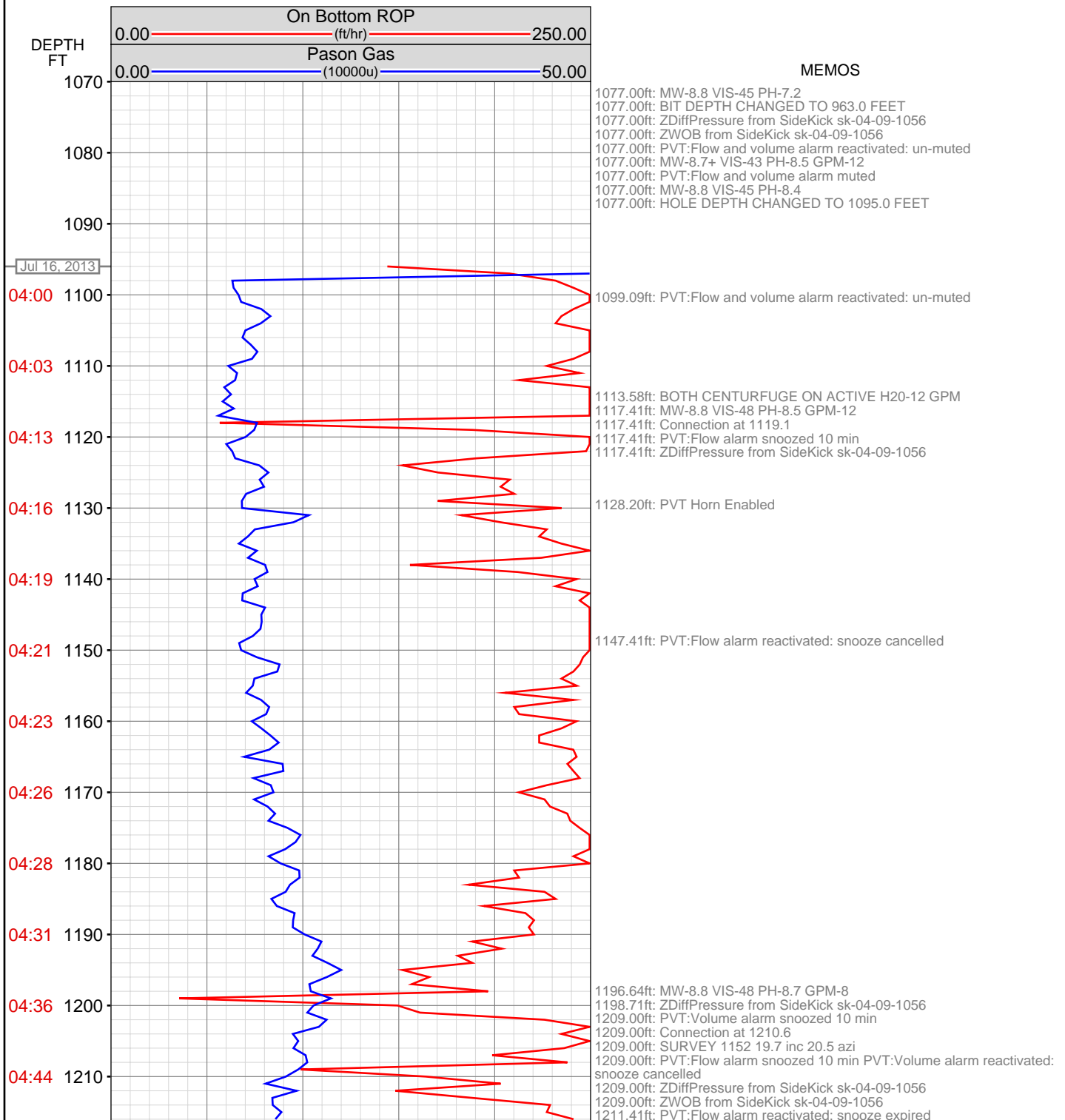


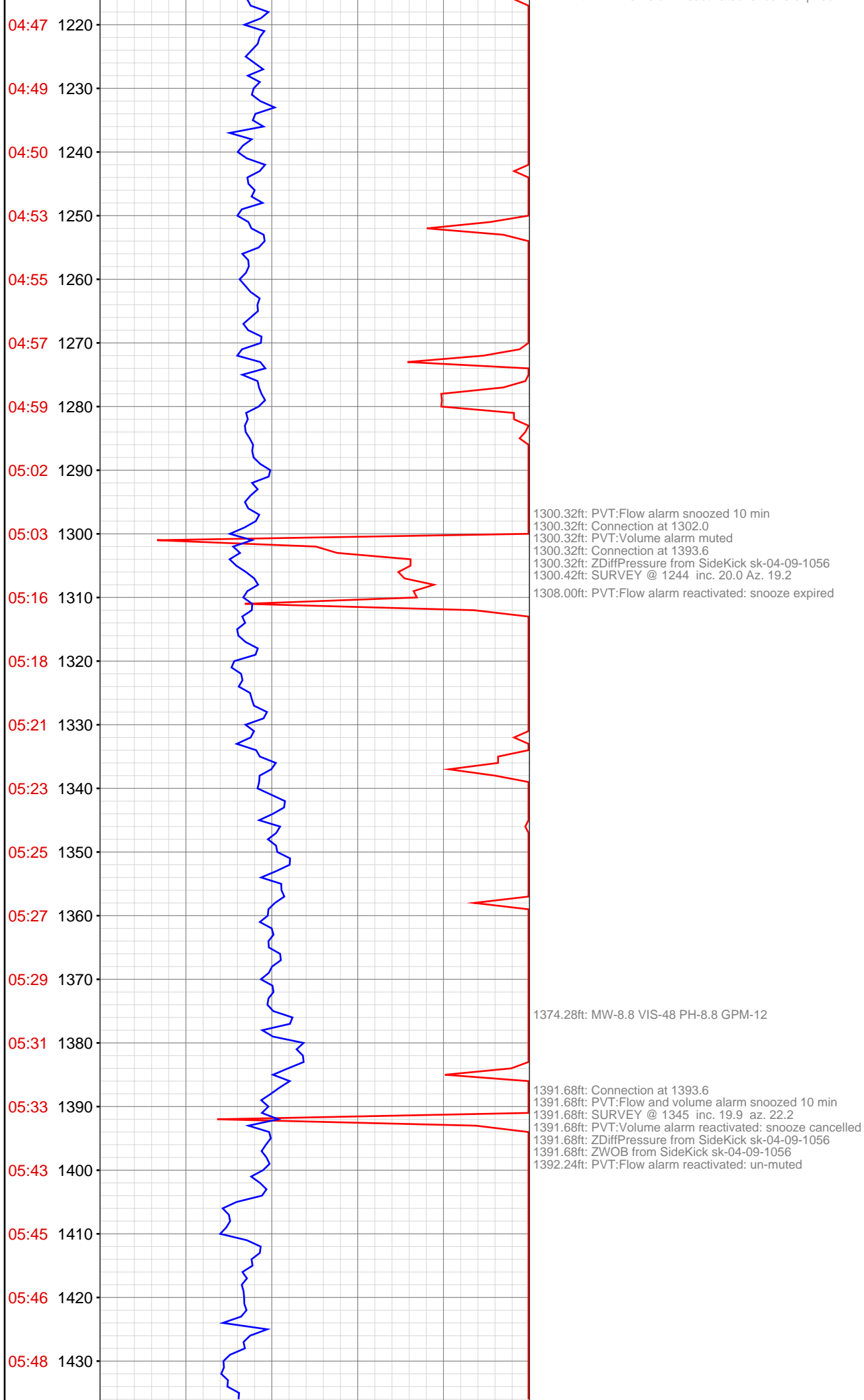
DataHub EDR Log

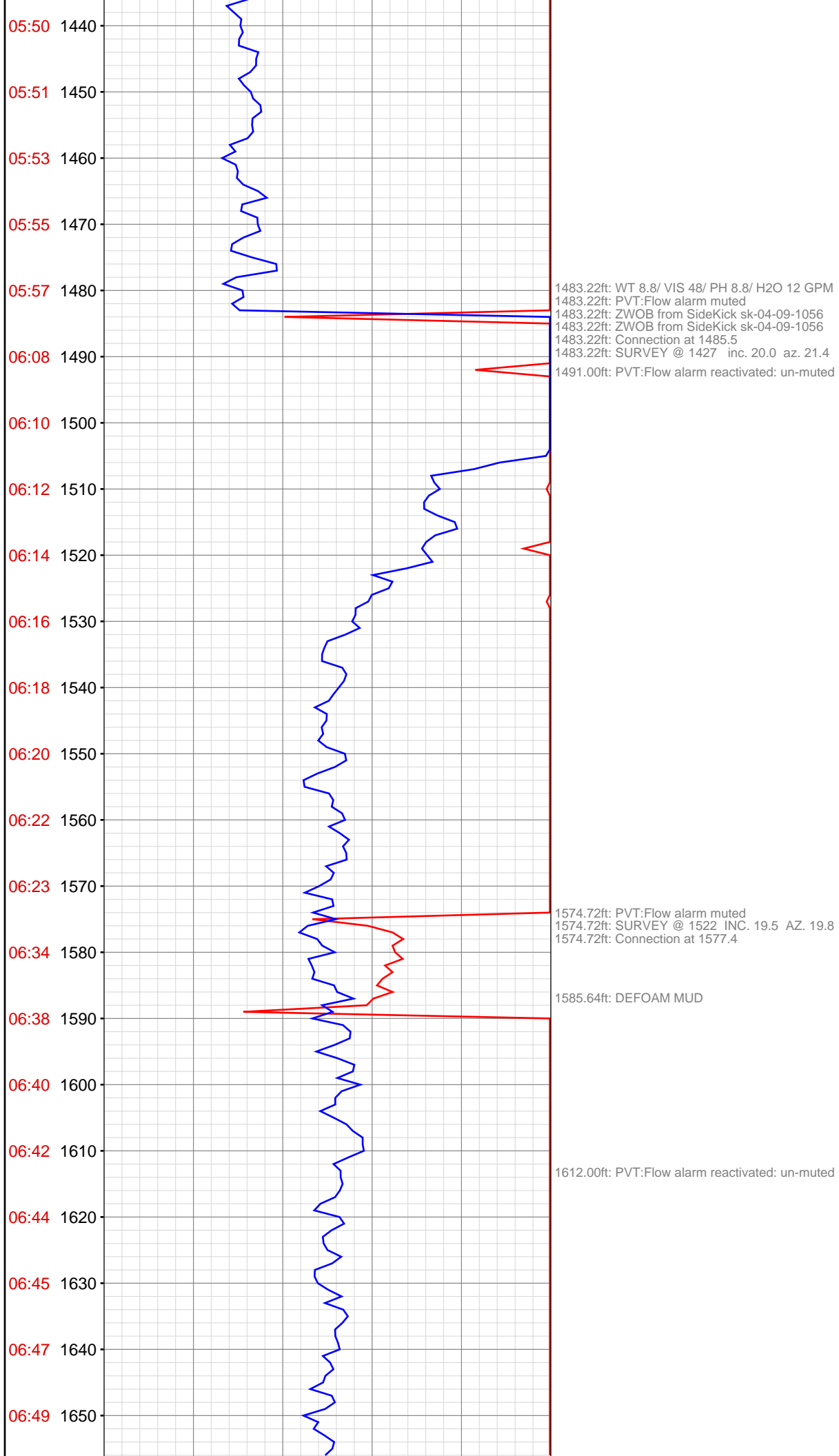
Mon Jul 22, 2013 10:41:08
Well Dossier 1373859386
Greg Veregin

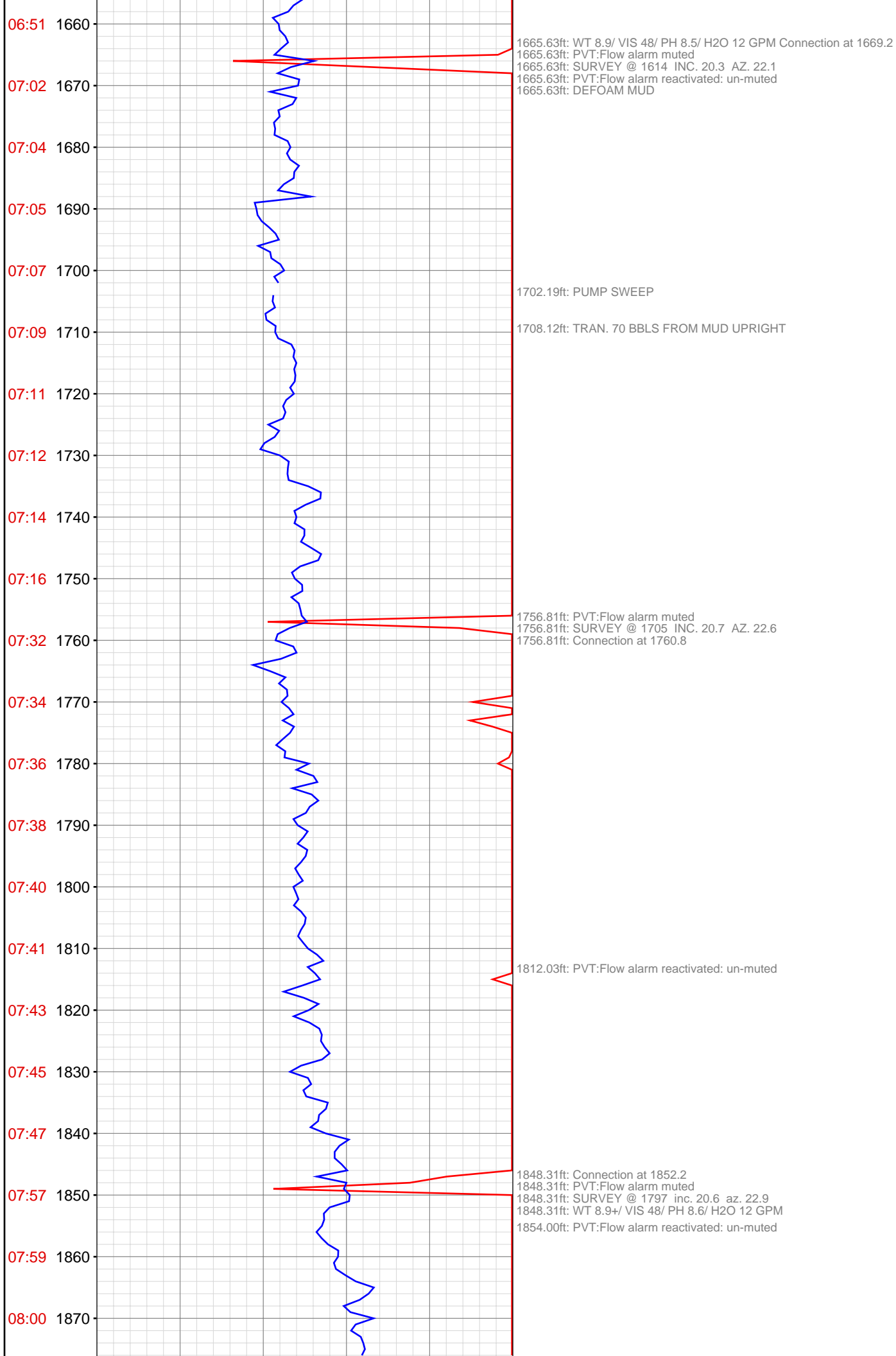
OPERATOR: EnCana Oil & Gas (USA), Inc.
WELL: Hagen 15-14A
FIELD:
LOCATION:
COUNTRY: USA
RIG: Pat-UTI 303

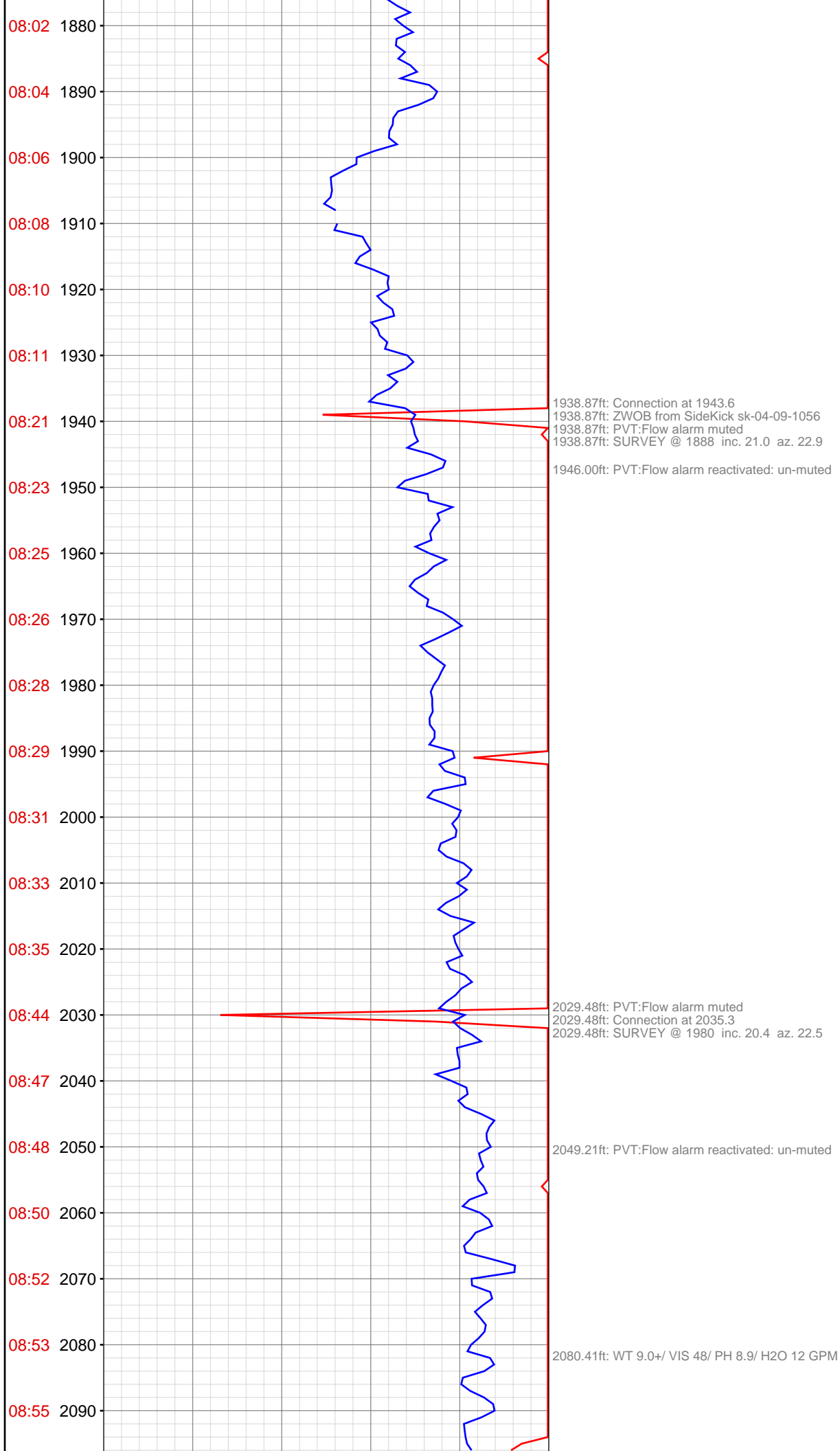
CONTRACTOR: Patterson-UTI Drilling Company
UNIQUE WELL ID:
SPUD DATE: Jul 16, 2013 00:00
RELEASE DATE: Jul 21, 2013 01:30

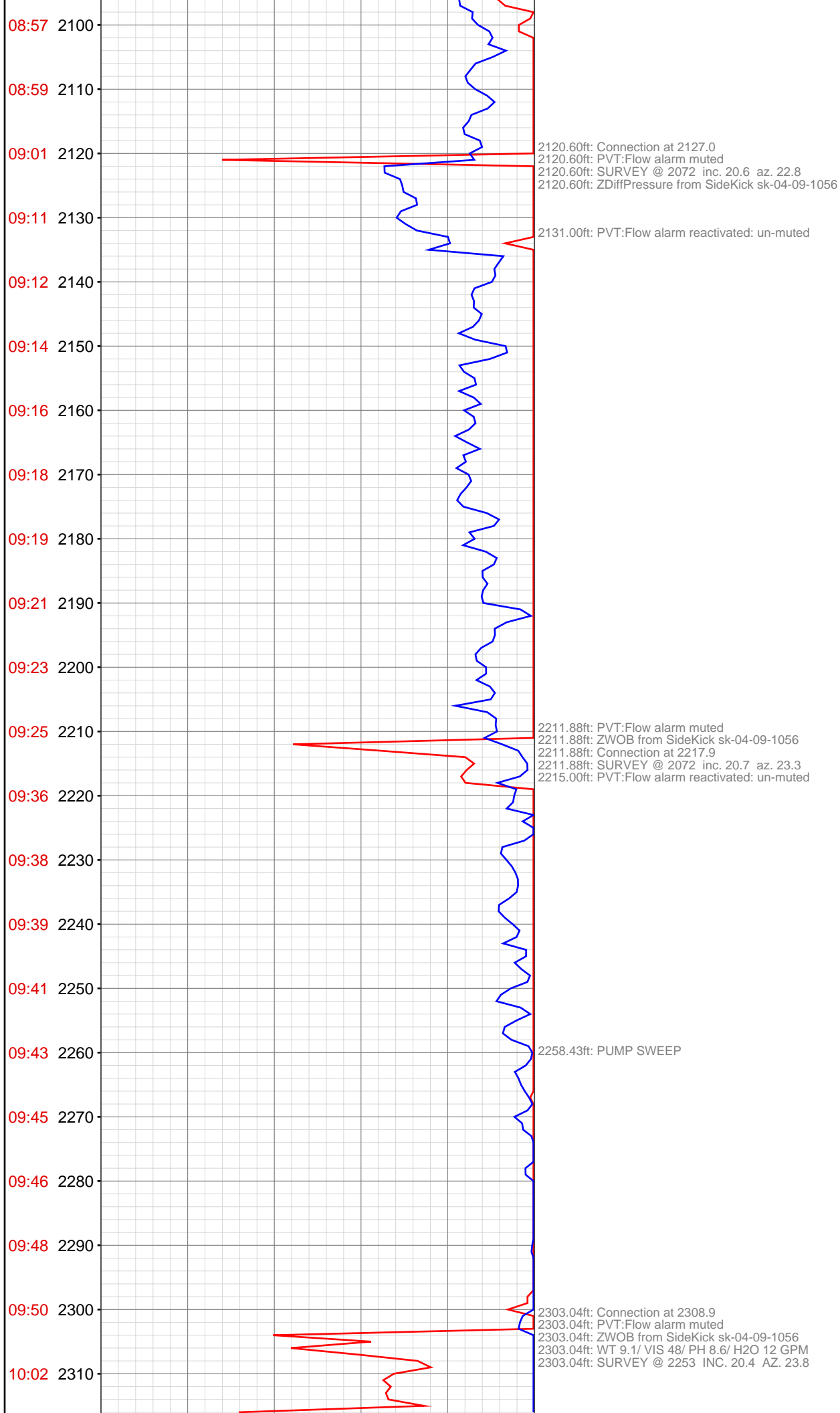


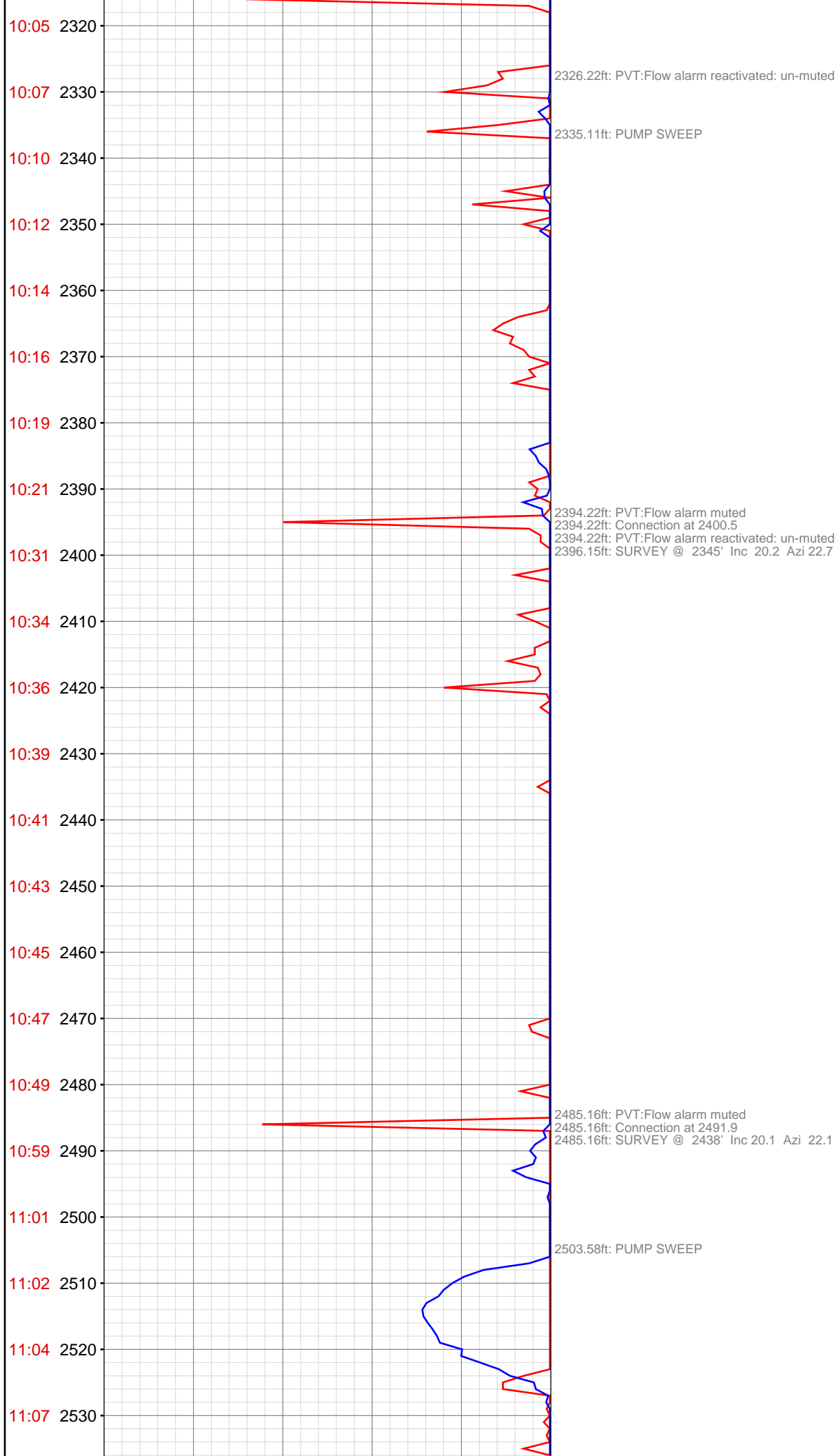


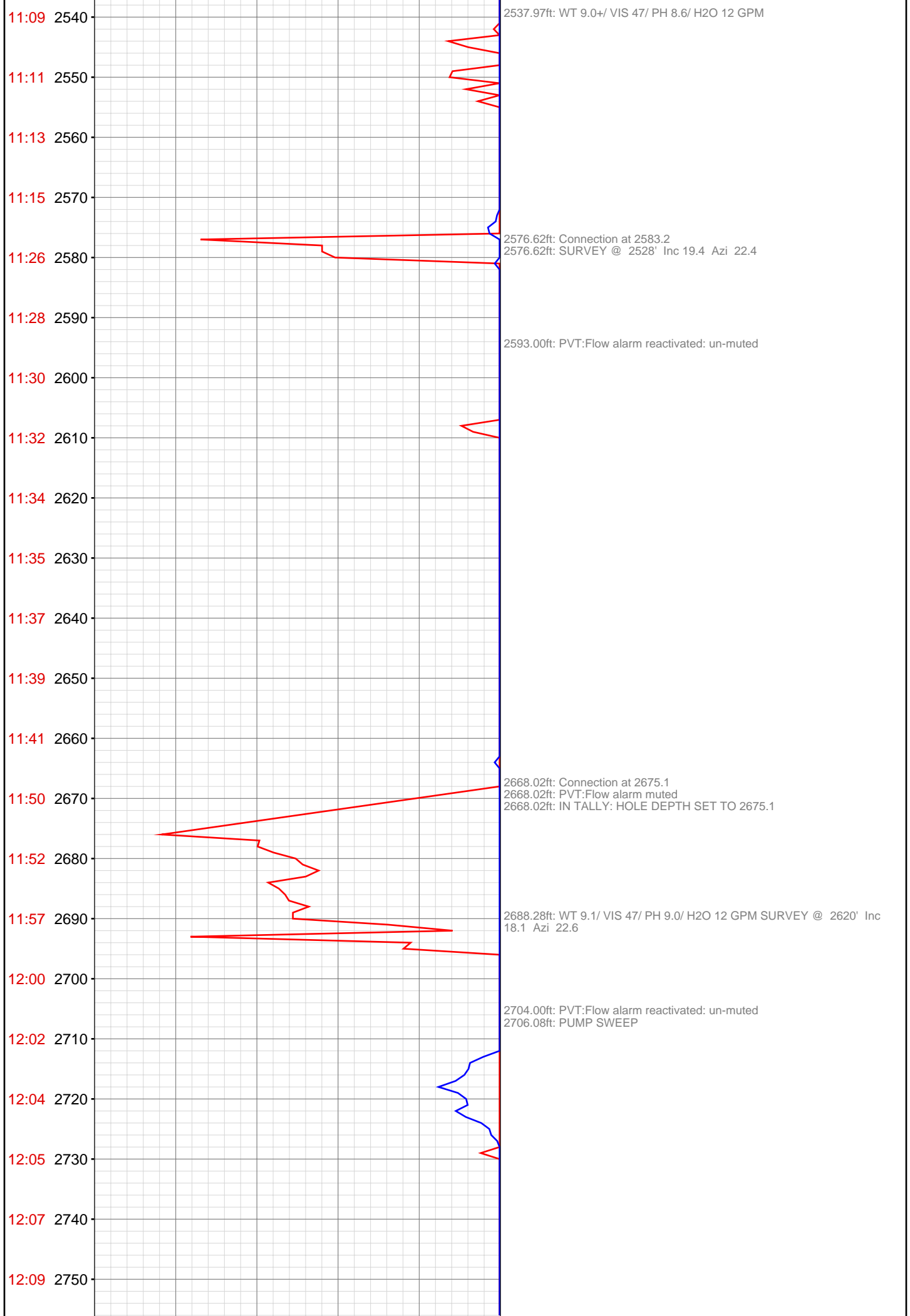


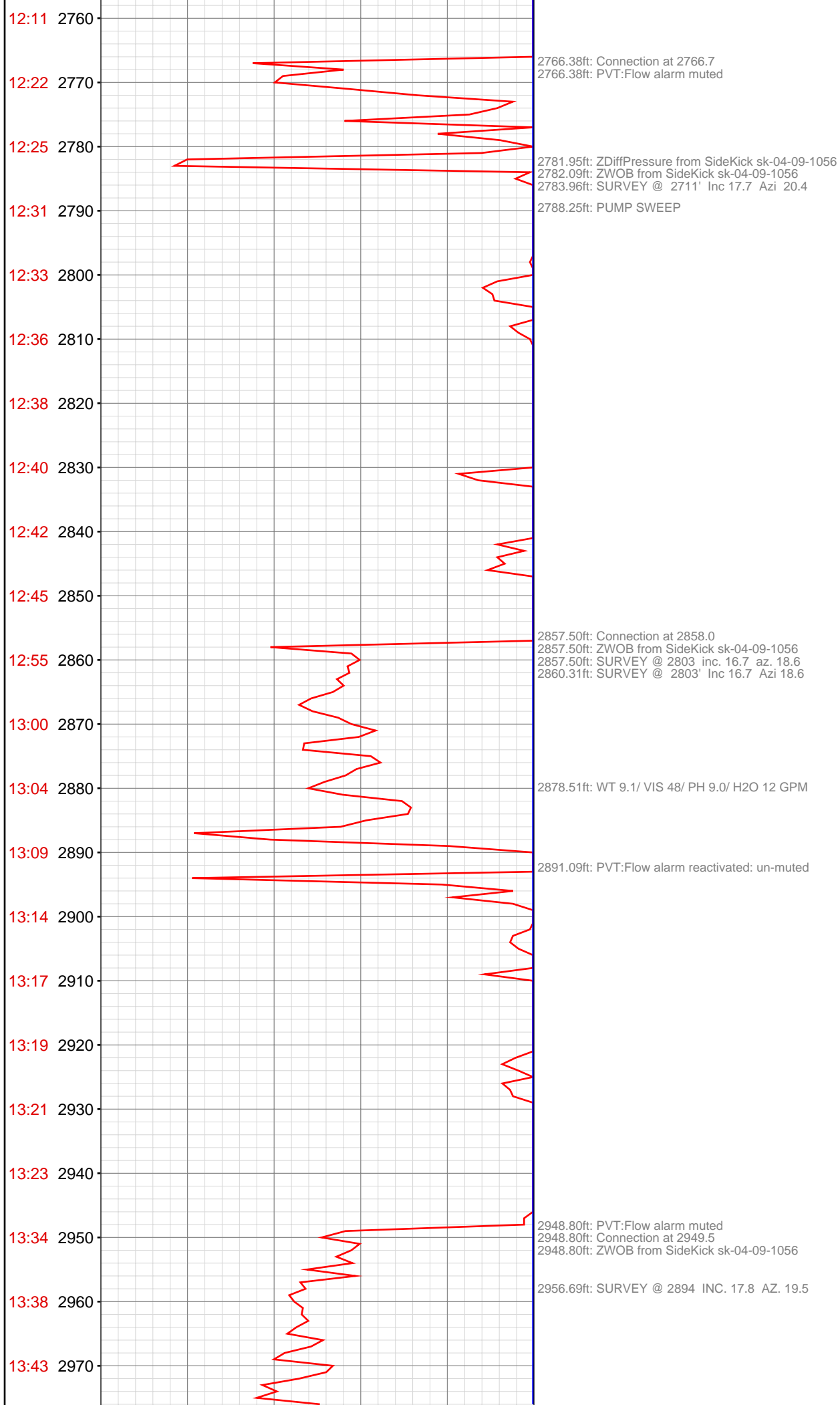


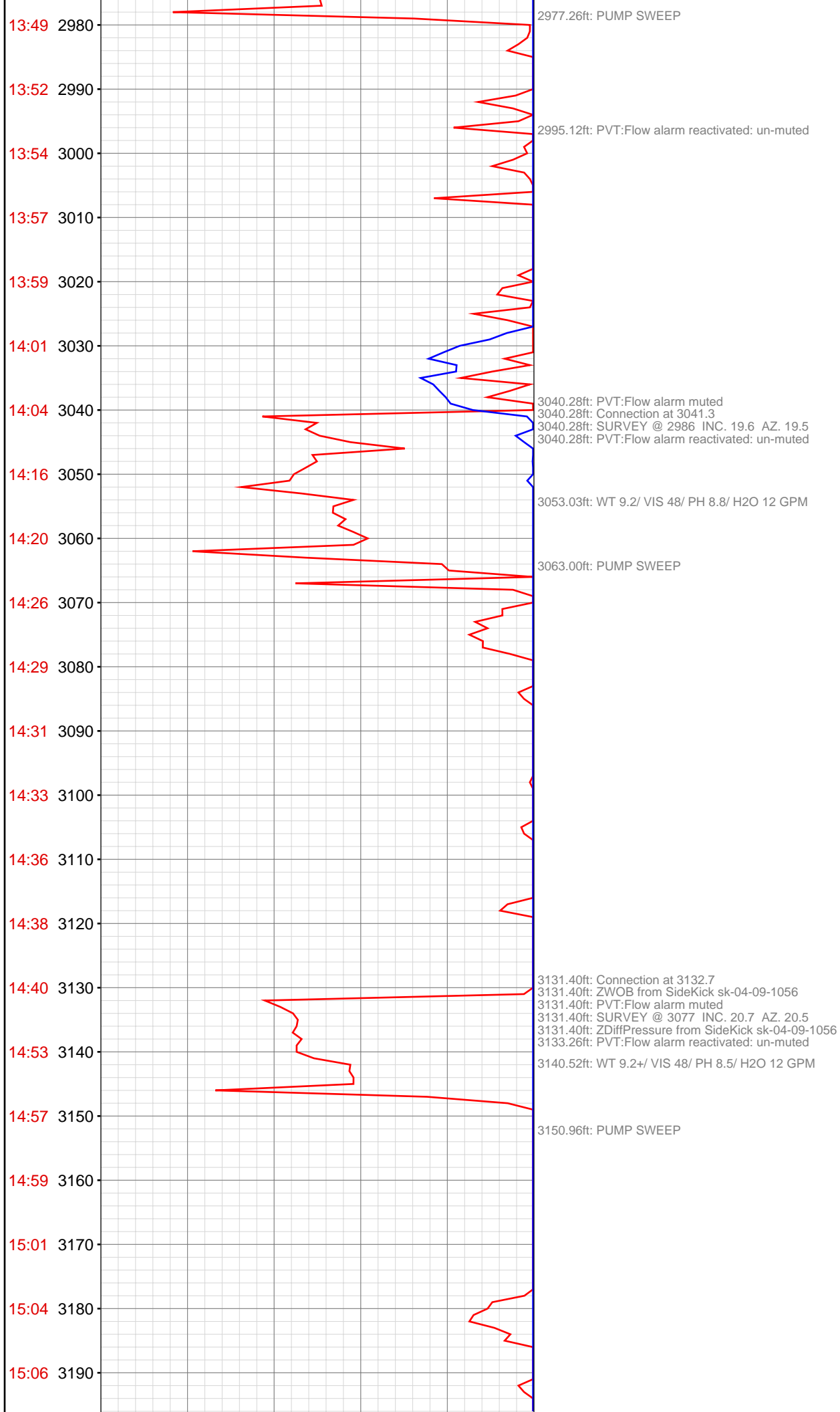


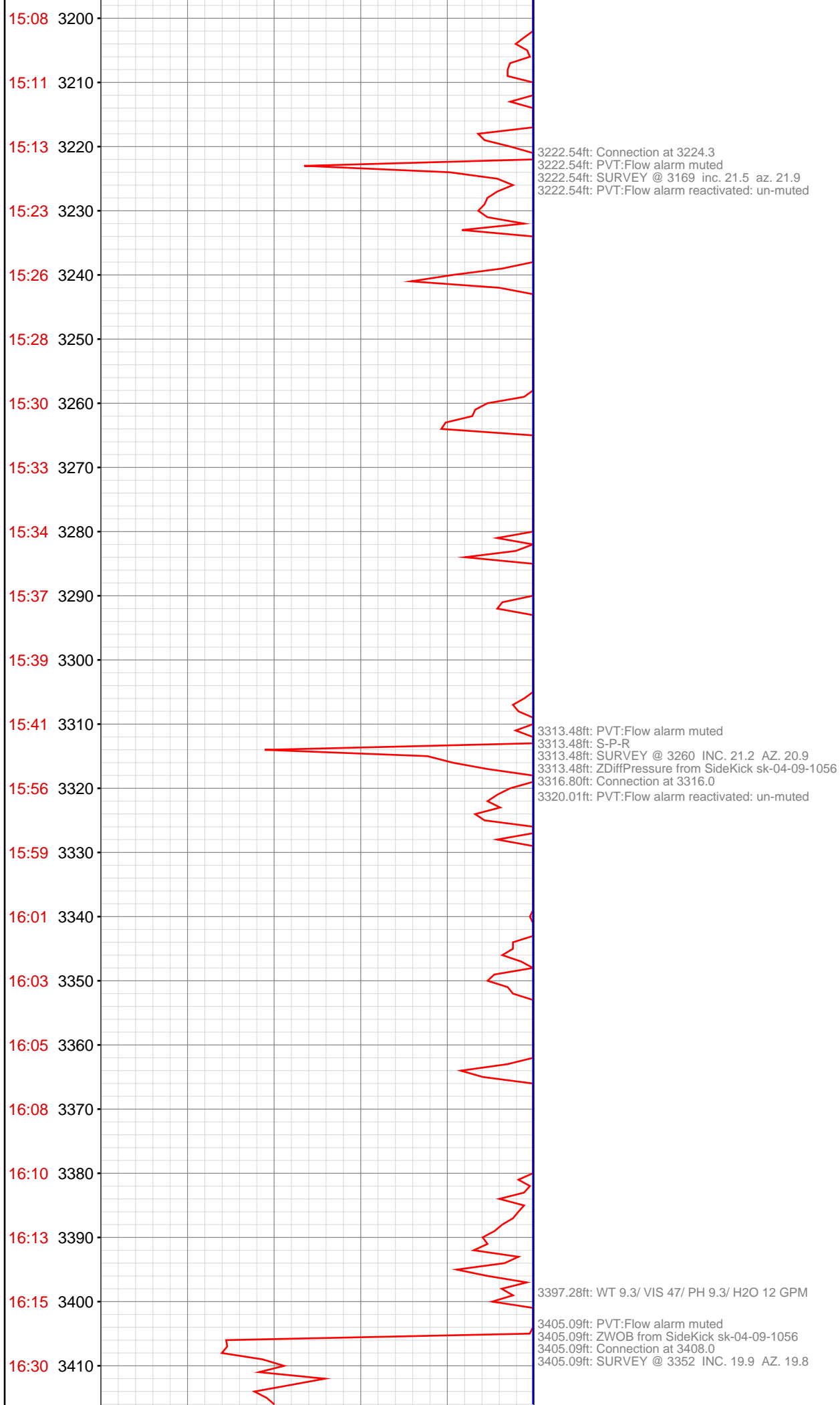


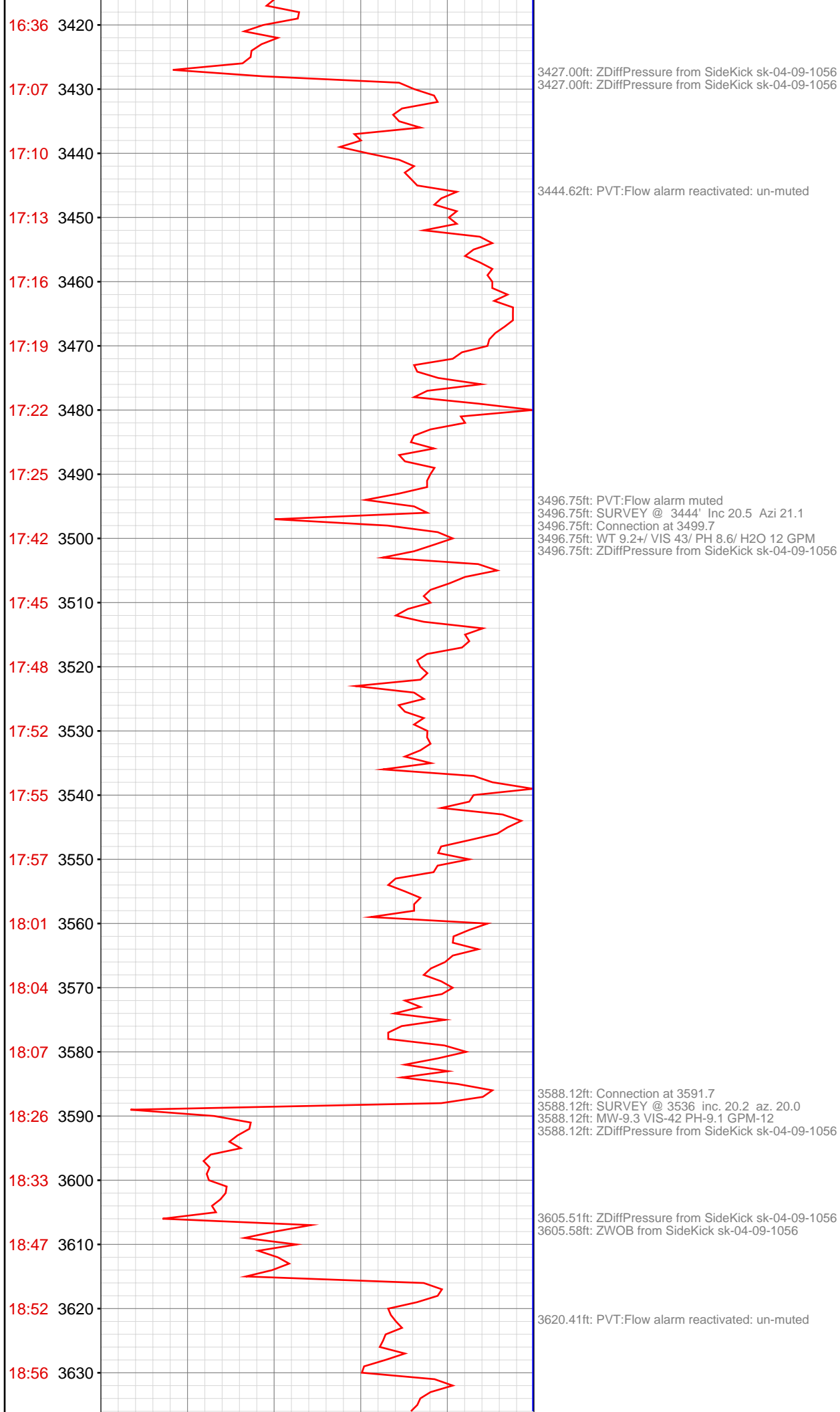


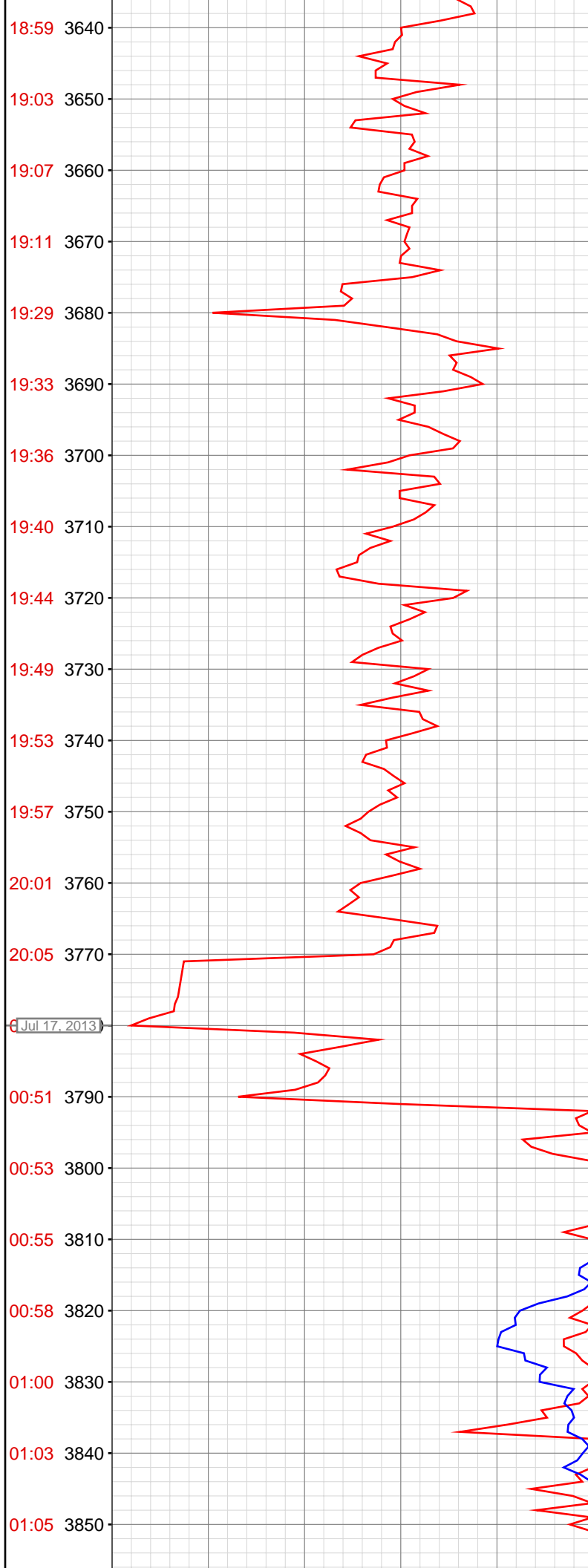






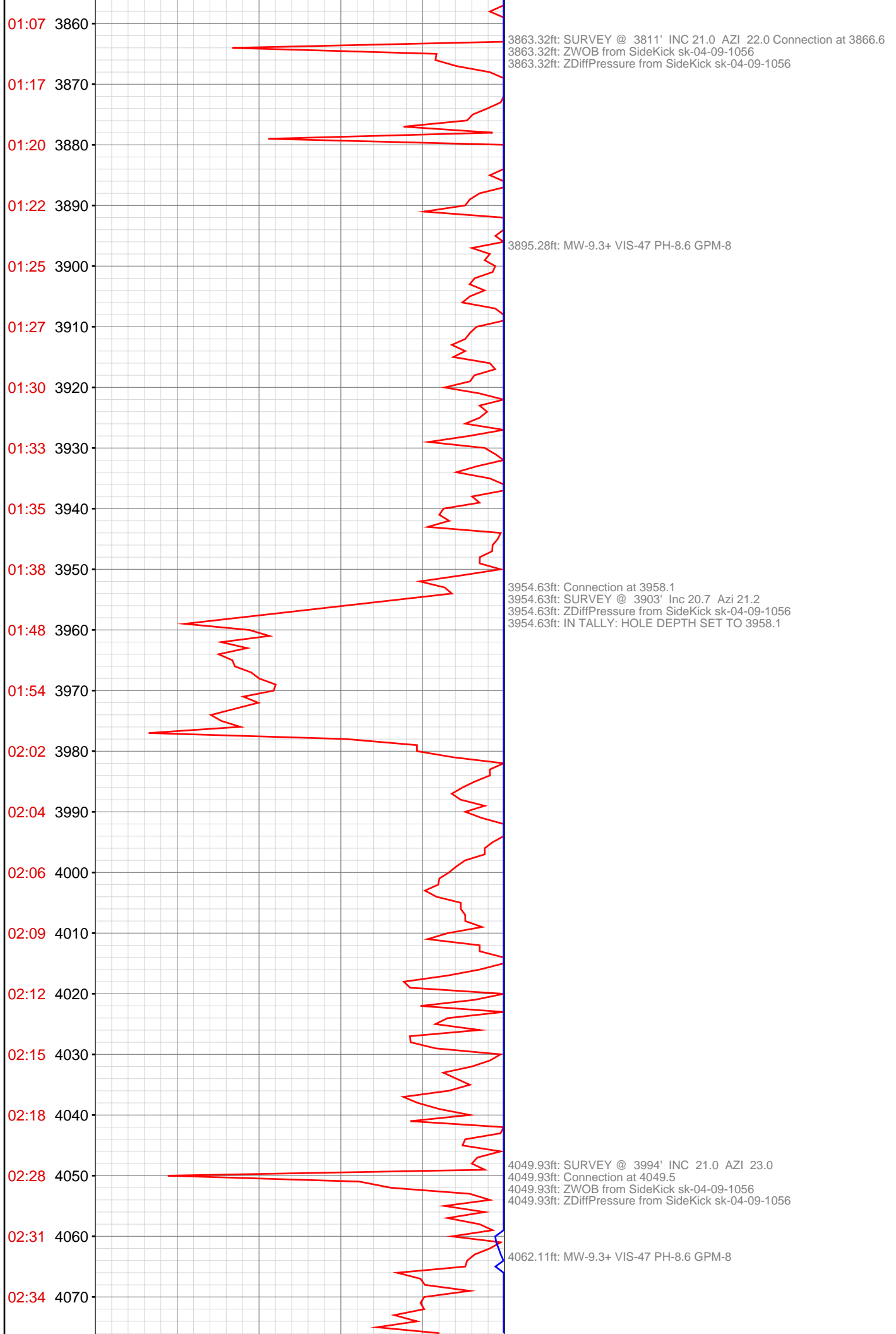


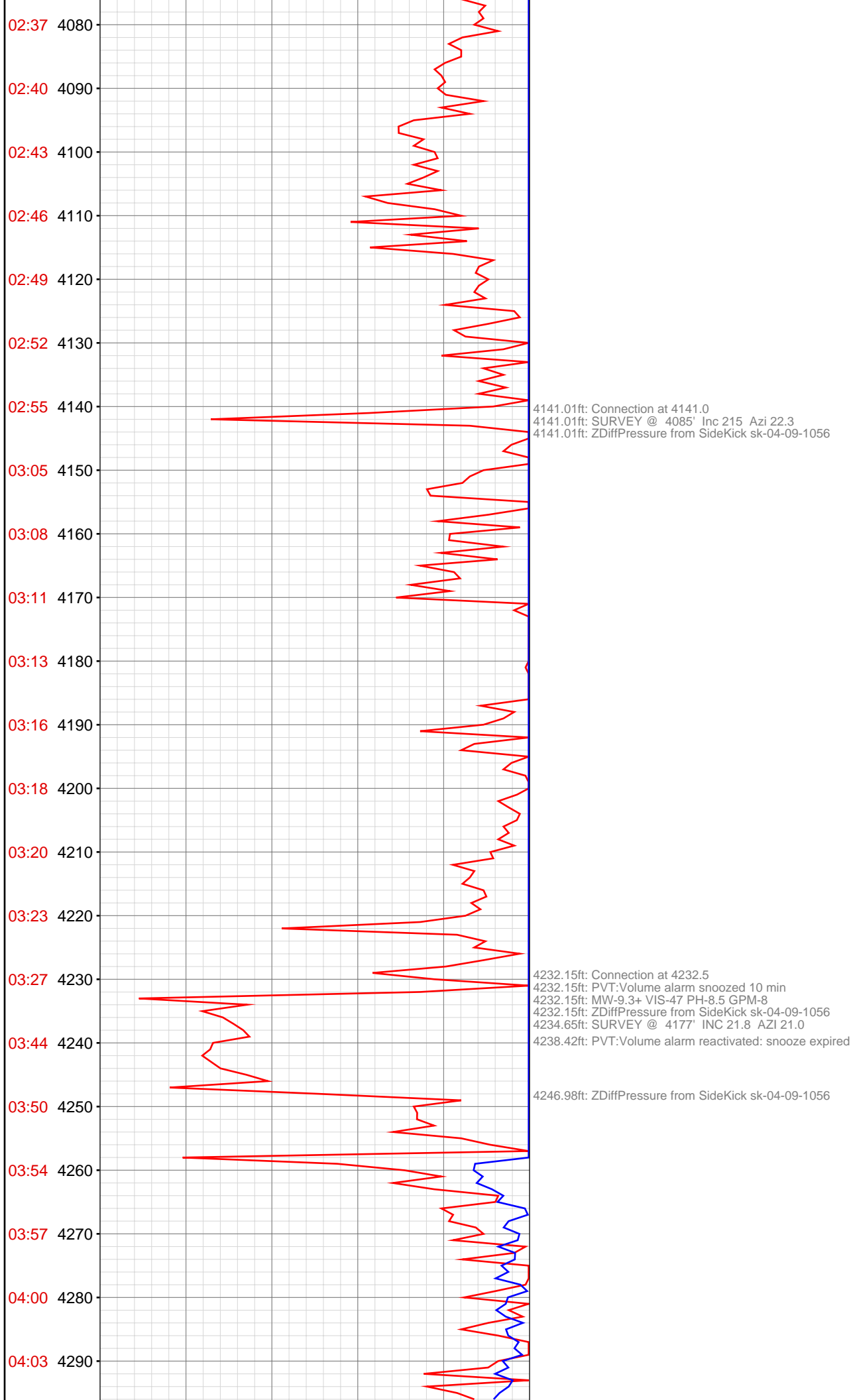


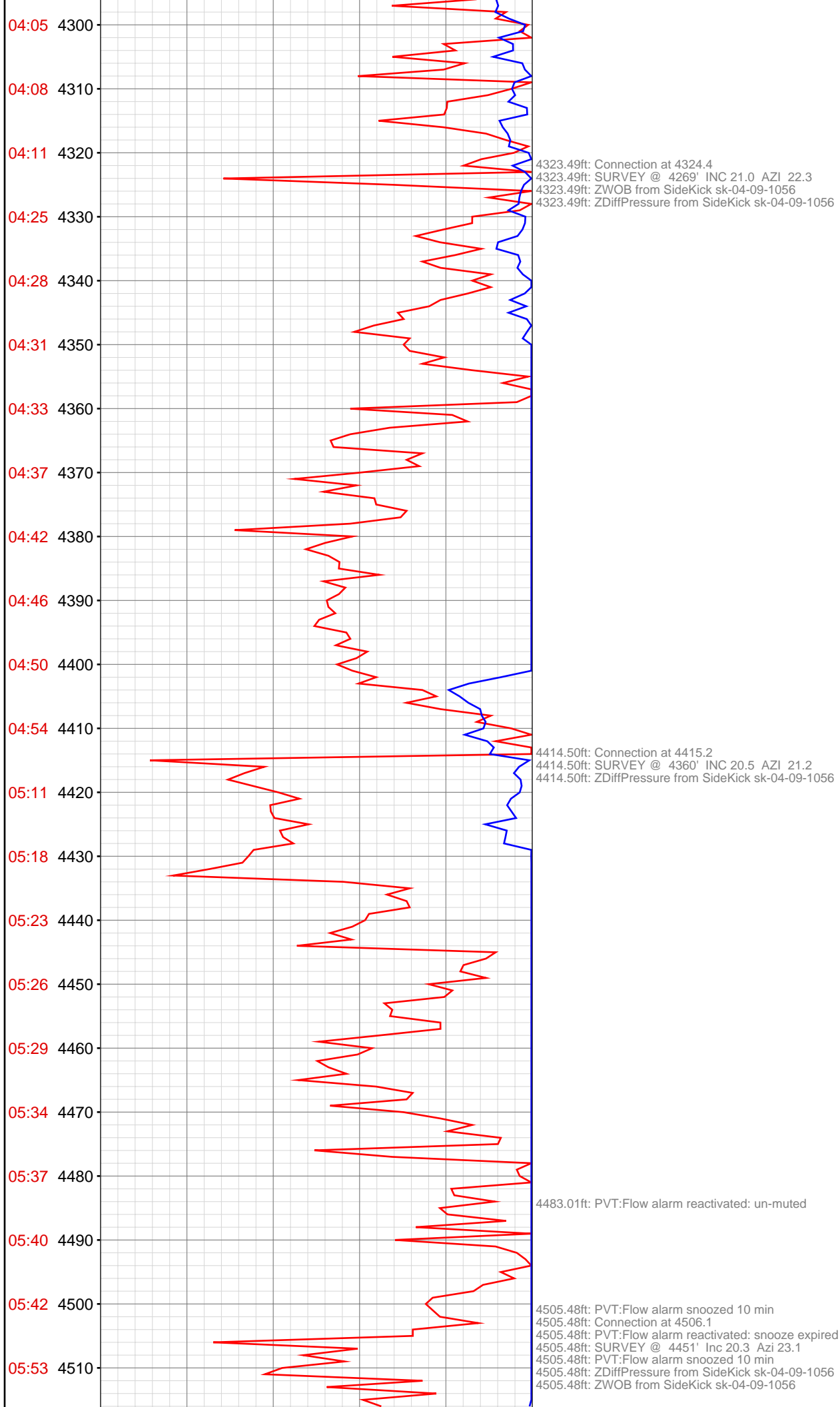


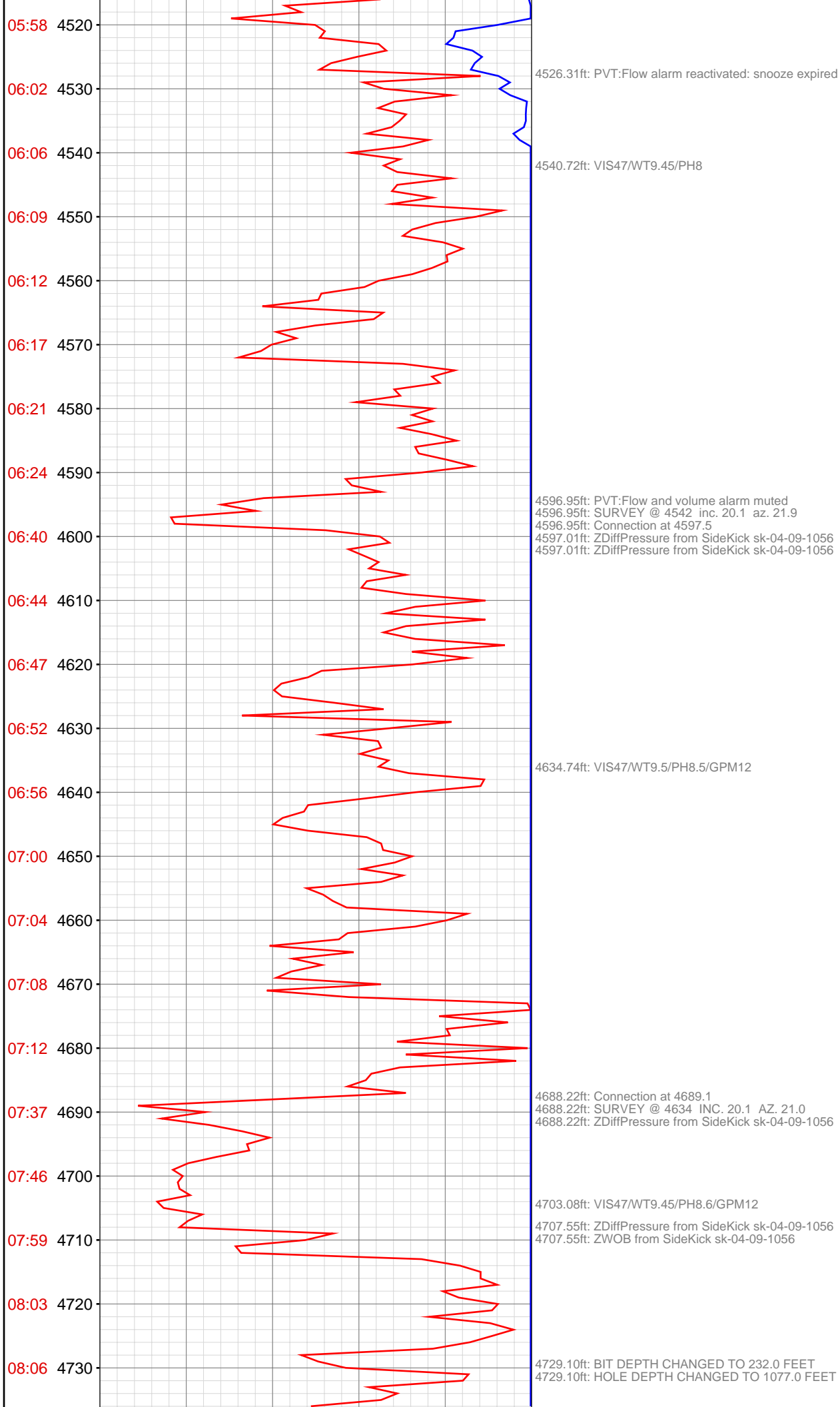
3679.69ft: Connection at 3683.4
3679.69ft: PVT:Flow and volume alarm snoozed 10 min
3679.69ft: PVT:Volume alarm reactivated: snooze expired
3679.69ft: SURVEY @ 3628' Inc 20.9 Azi 21.0
3679.69ft: ZDiffPressure from SideKick sk-04-09-1056
3679.69ft: ZWOB from SideKick sk-04-09-1056
3679.69ft: HOOK LOAD HIGH RECALIBRATED
3679.69ft: ZWOB from SideKick sk-04-09-1056
3679.69ft: ZDiffPressure from SideKick sk-04-09-1056
3689.24ft: PVT:Flow alarm reactivated: snooze cancelled

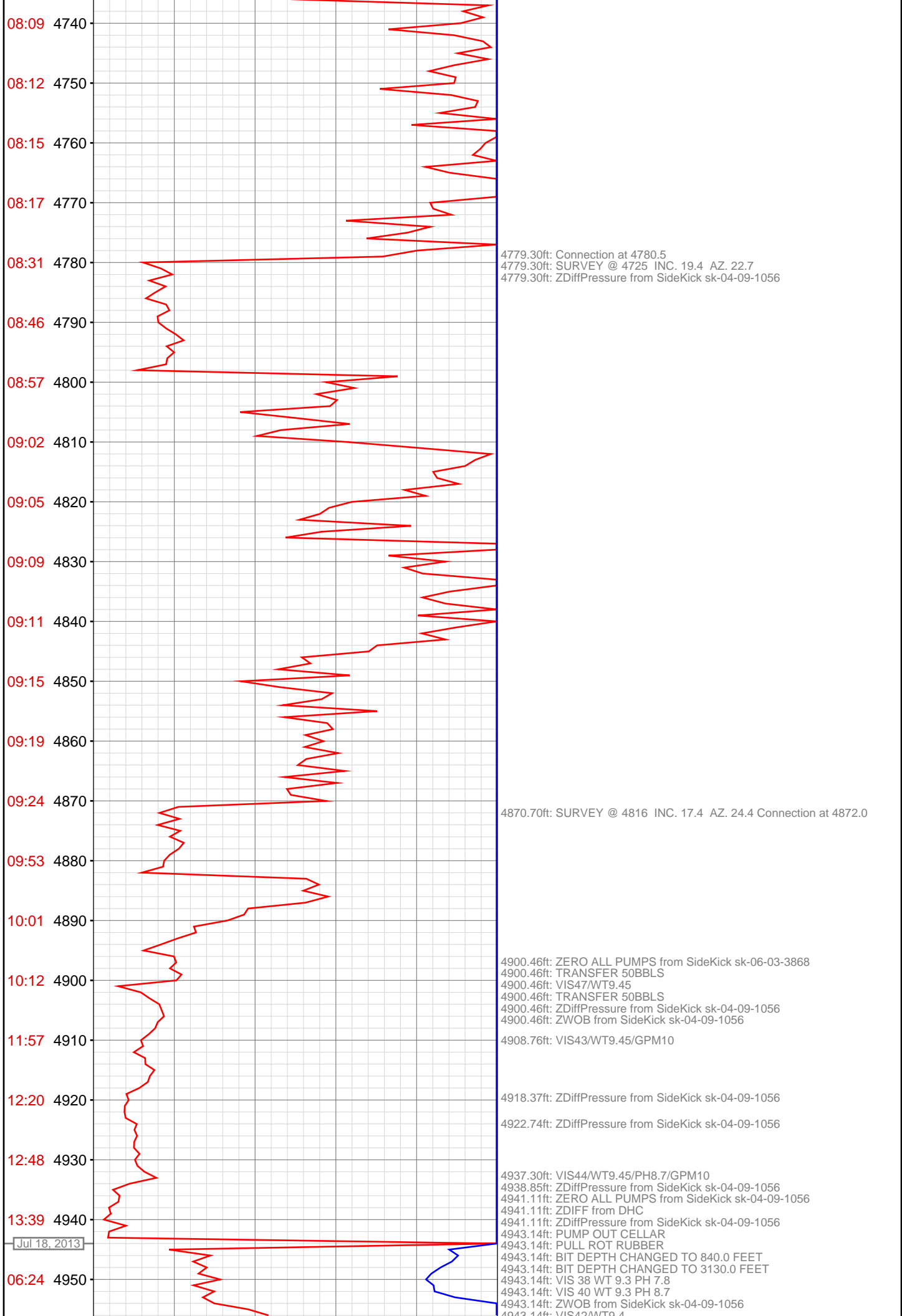
3770.96ft: PVT:Flow and volume alarm muted
3770.96ft: SURVEY @ 3720' INC 20.8 AZI 20.4
3770.96ft: ZDiffPressure from SideKick sk-04-09-1056
3770.96ft: Connection at 3775.1
3771.95ft: IN TALLY: HOLE DEPTH SET TO 3775.1
3779.20ft: ZERO ALL PUMPS from SideKick sk-04-09-1056
3779.20ft: ZERO ALL PUMPS from SideKick sk-04-09-1056
3779.20ft: PVT:Flow and volume alarm reactivated: un-muted
3779.20ft: PVT:Flow alarm snoozed 10 min
3779.20ft: PVT:Flow alarm reactivated: snooze cancelled
3779.20ft: PVT:Flow and volume alarm muted
3779.20ft: MW-9.3 VIS-44 PH-8.8
3779.20ft: PVT:Flow and volume alarm reactivated: un-muted
3779.20ft: PVT:Flow alarm muted
3779.20ft: MW-9.3 VIS-44 PH-8.6 GPM-8
3779.20ft: ZDiffPressure from SideKick sk-04-09-1056











4943.14ft: VIS42/WT9.4
4943.14ft: ZWOB from SideKick sk-04-09-1056
4961.78ft: Connection at 4963.4
4961.78ft: ZWOB from SideKick sk-04-09-1056
4962.11ft: SURVEY @ 4908 inc. 16.1 az. 24.1

4972.05ft: TRANSFER 50BBLs

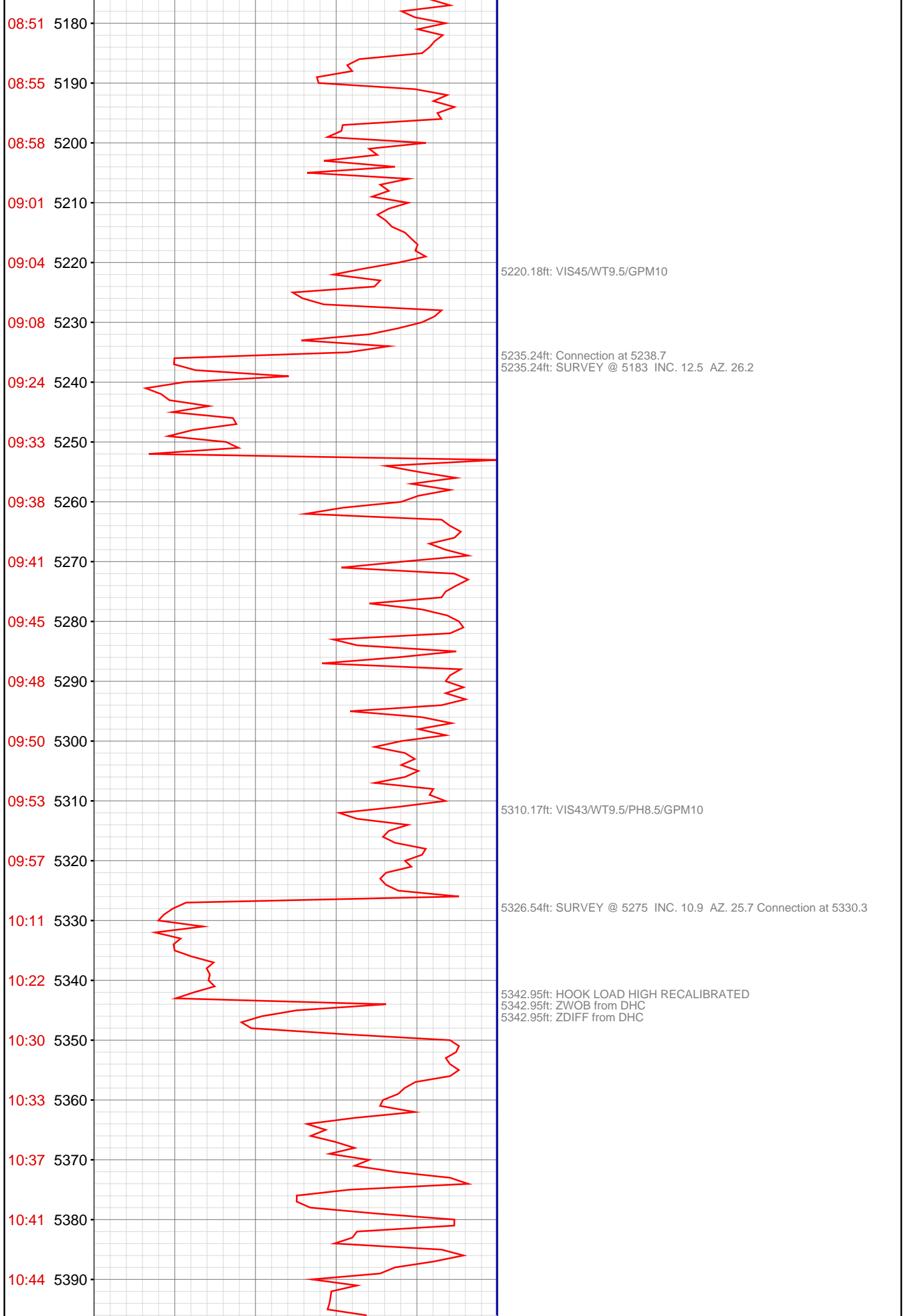
5052.89ft: SURVEY @ 5000 INC. 16.0 AZ. 24.1 Connection at 5055.2

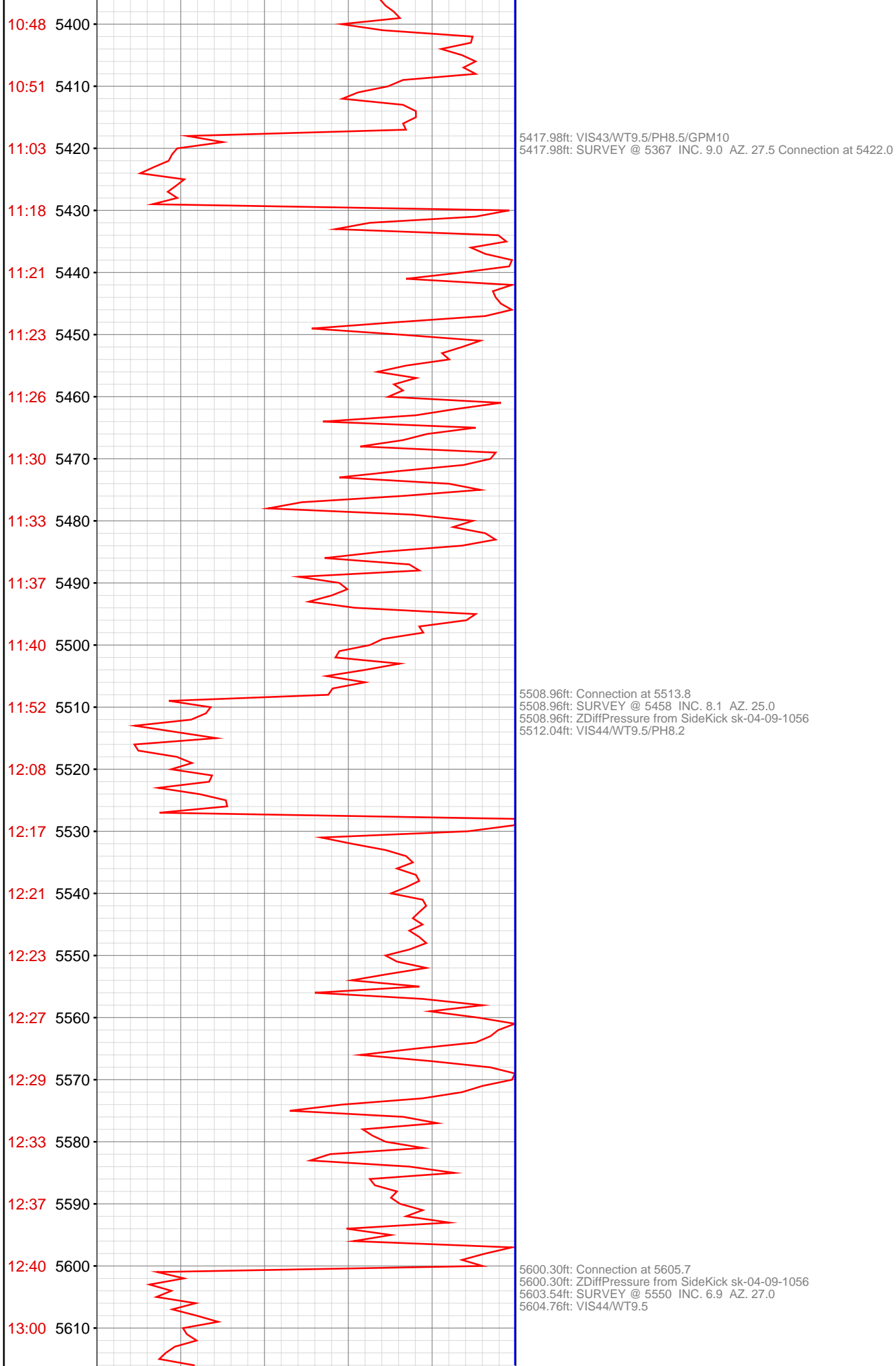
5072.24ft: ZDIFF from DHC

5122.61ft: VIS45/WT9.45/PH8.6/GPM10

5143.96ft: Connection at 5146.8
5143.96ft: SURVEY @ 5091 INC. 14.8 AZ. 26.4
5143.96ft: ZDiffPressure from SideKick sk-04-09-1056

5165.62ft: ZDiffPressure from SideKick sk-04-09-1056
5165.62ft: ZWOB from SideKick sk-04-09-1056





5615.72ft: PUMP OUT CELLAR

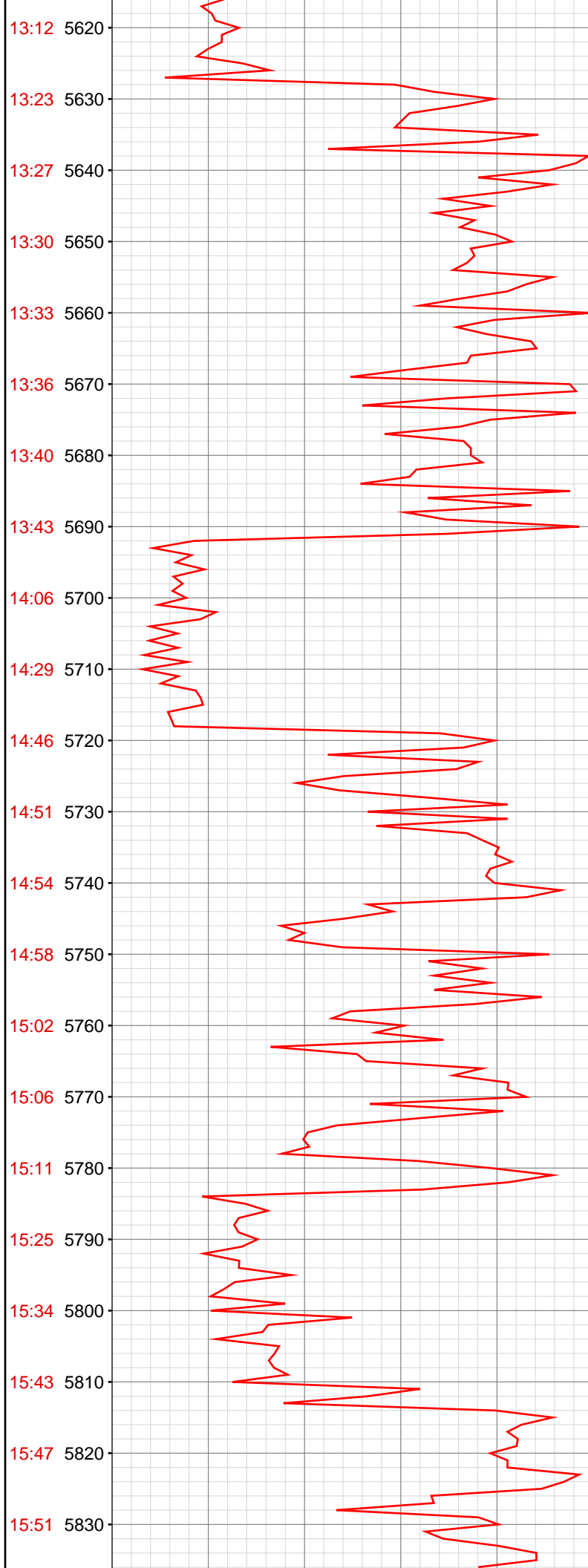
5626.48ft: ZDiffPressure from SideKick sk-04-09-1056

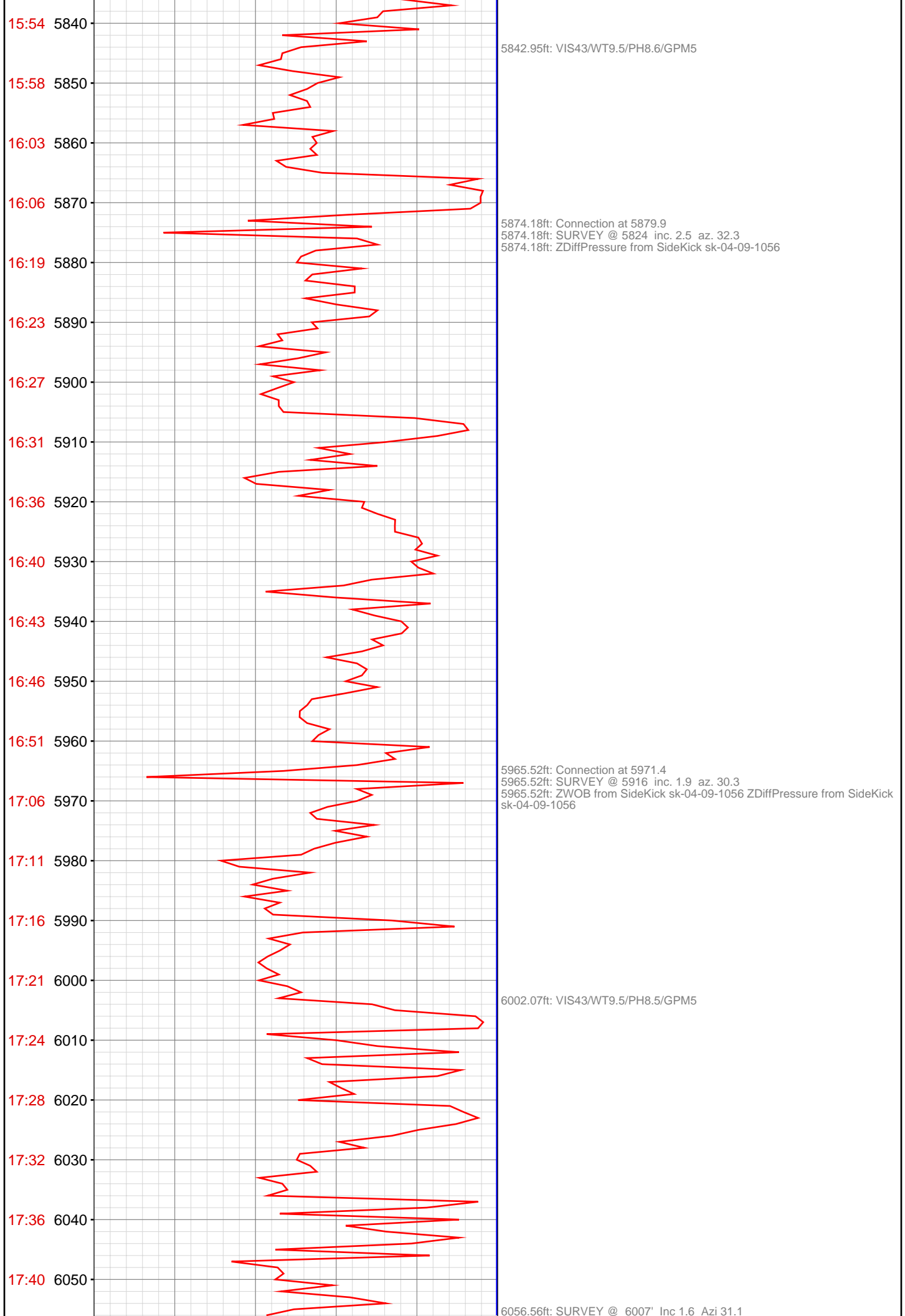
5691.44ft: Connection at 5696.9
5691.44ft: SURVEY @ 5641 INC. 5.6 AZ. 32.2
5691.44ft: ZDiffPressure from SideKick sk-04-09-1056

5702.00ft: VIS44/WT9.5/PH8.6/GPM10

5745.28ft: VIS45/WT9.55/PH8.8/GPM8

5783.04ft: Connection at 5788.6
5783.04ft: SURVEY @ 5733 INC. 4.1 AZ. 37.4



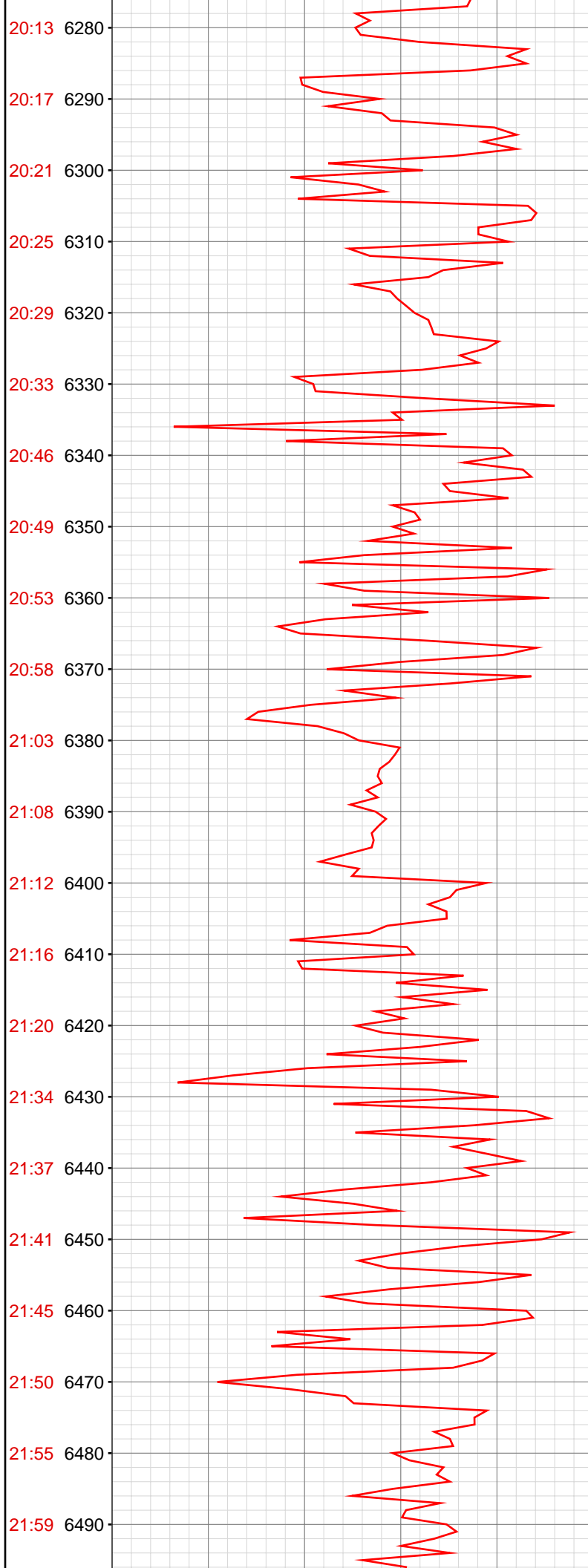


6056.56ft: ZDiffPressure from SideKick sk-04-09-1056
6057.02ft: Connection at 6062.4
6057.38ft: IN TALLY: HOLE DEPTH SET TO 6062.4

6098.69ft: 9.6\42VIS\9.1PH

6153.18ft: SURVEY @ 6098' Inc 1.5 Azi 25.3
6153.18ft: ZDiffPressure from SideKick sk-04-09-1056
6154.30ft: Connection at 6153.9
6156.69ft: 9.6\44VIS\9.PH

6244.69ft: SURVEY @ 6190' Inc 1.5 Azi 27.4
6244.69ft: ZDiffPressure from SideKick sk-04-09-1056
6244.69ft: ZWOB from SideKick sk-04-09-1056
6245.05ft: 9.75\44VIS\9.PH
6246.59ft: Connection at 6245.5 PUMP OUT CELLAR

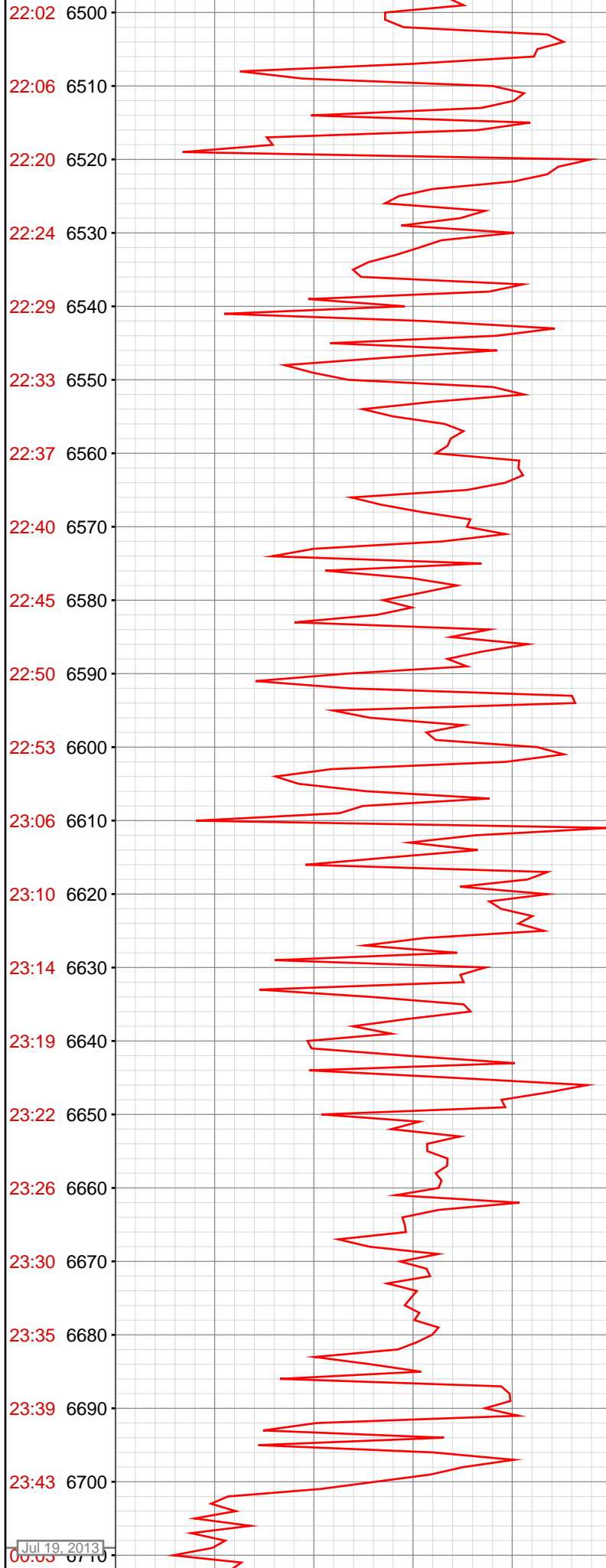


6335.63ft: SURVEY @ 6282' Inc 1.2 Azi 29.0
6335.63ft: ZDiffPressure from SideKick sk-04-09-1056
6337.34ft: Connection at 6337.4

6377.26ft: 9.75\44VIS\8.7PH

6427.36ft: SURVEY @ 6373' Inc .8 Azi 19.6
6427.36ft: ZDiffPressure from SideKick sk-04-09-1056
6427.40ft: Connection at 6428.7

6474.67ft: 9.8\43VIS\8.8PH



22:02 6500
22:06 6510
22:20 6520
22:24 6530
22:29 6540
22:33 6550
22:37 6560
22:40 6570
22:45 6580
22:50 6590
22:53 6600
23:06 6610
23:10 6620
23:14 6630
23:19 6640
23:22 6650
23:26 6660
23:30 6670
23:35 6680
23:39 6690
23:43 6700
00:05 6710

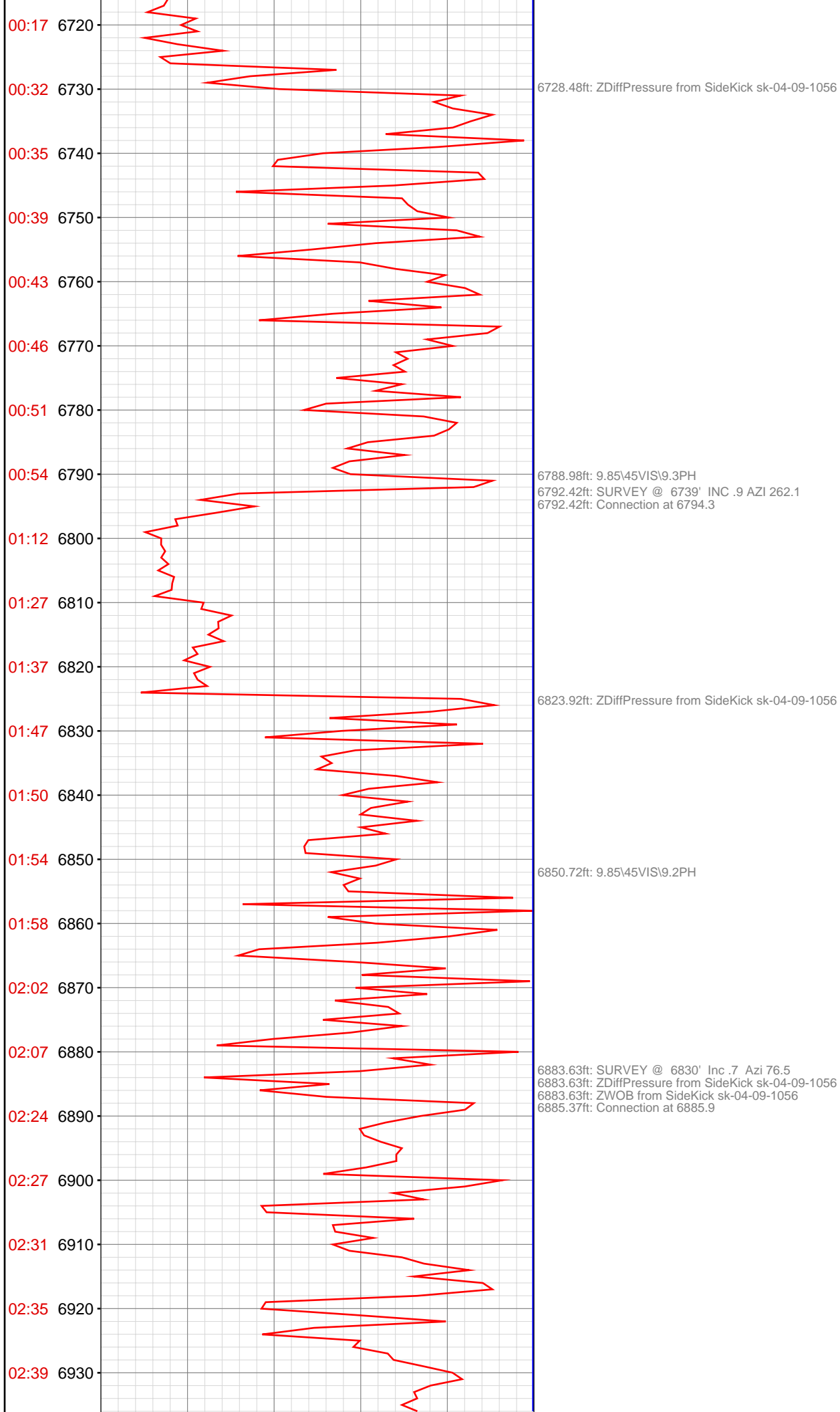
6518.50ft: SURVEY @ 6464' Inc .6 Azi 343.4
6518.50ft: ZDiffPressure from SideKick sk-04-09-1056
6518.50ft: ZWOB from SideKick sk-04-09-1056
6518.50ft: Connection at 6519.9

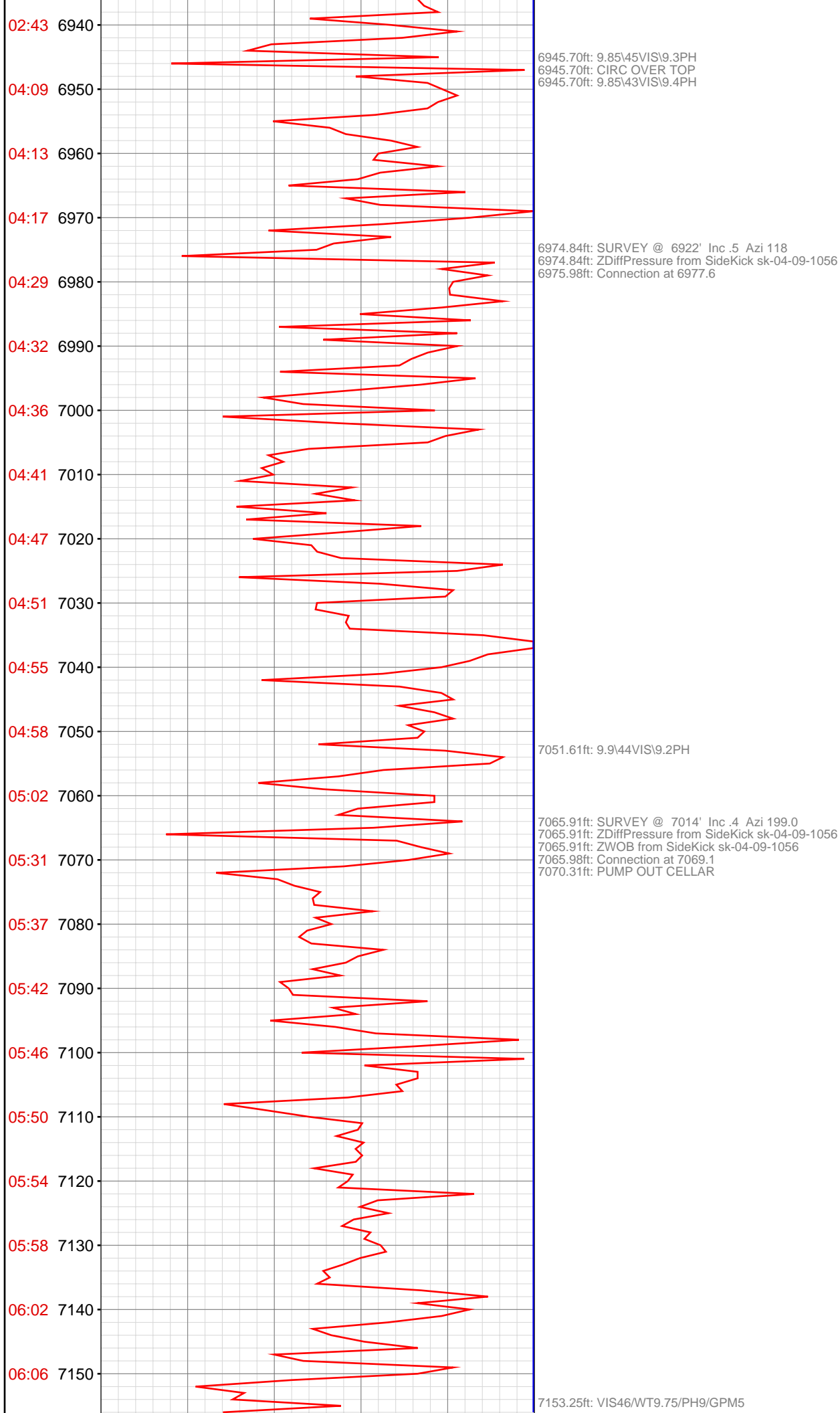
6601.97ft: 9.85\45VIS\8.9PH

6609.84ft: SURVEY @ 6556' Inc .6 Azi 293.8
6609.84ft: ZDiffPressure from SideKick sk-04-09-1056
6610.53ft: Connection at 6611.4

6701.05ft: SURVEY @ 6647' INC 1.3 AZI 267.4
6701.05ft: Connection at 6702.8

6714.14ft: 9.85\43VIS\9.PH





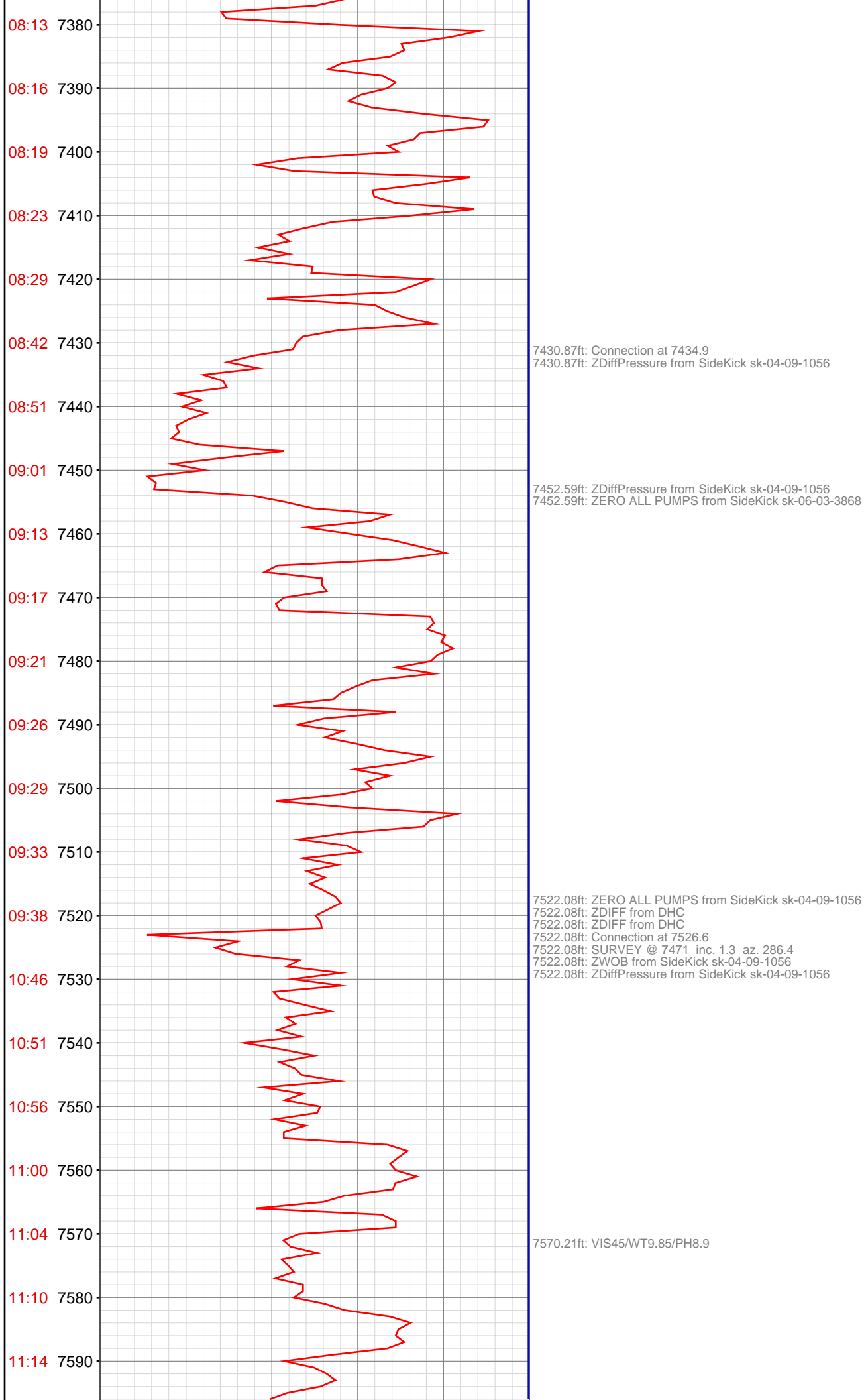
7157.05ft: Connection at 7160.8
7157.05ft: SURVEY @ 7105 inc. 0.6 az. 223.1

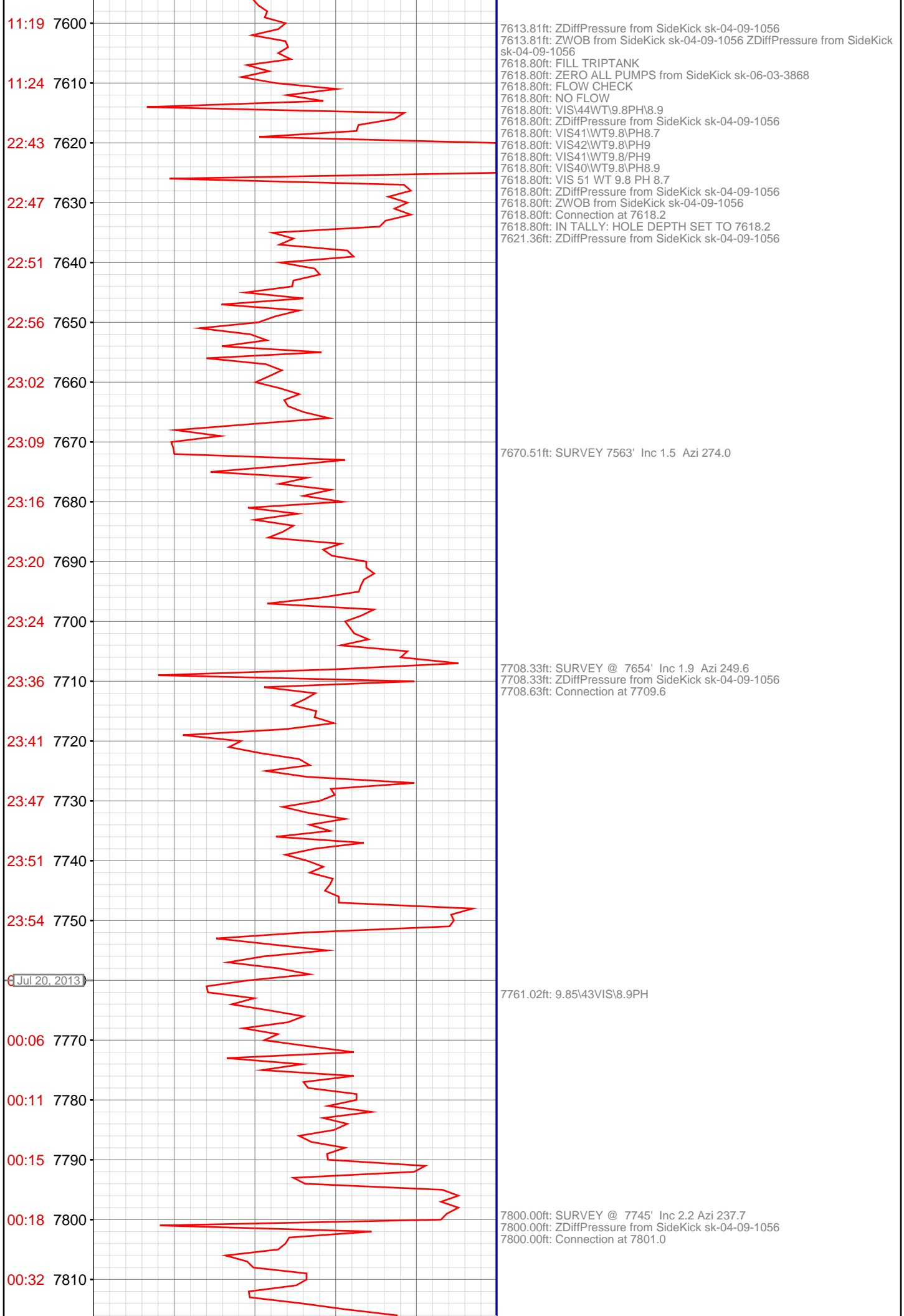
7238.32ft: VIS 45/WT9.8/PH9

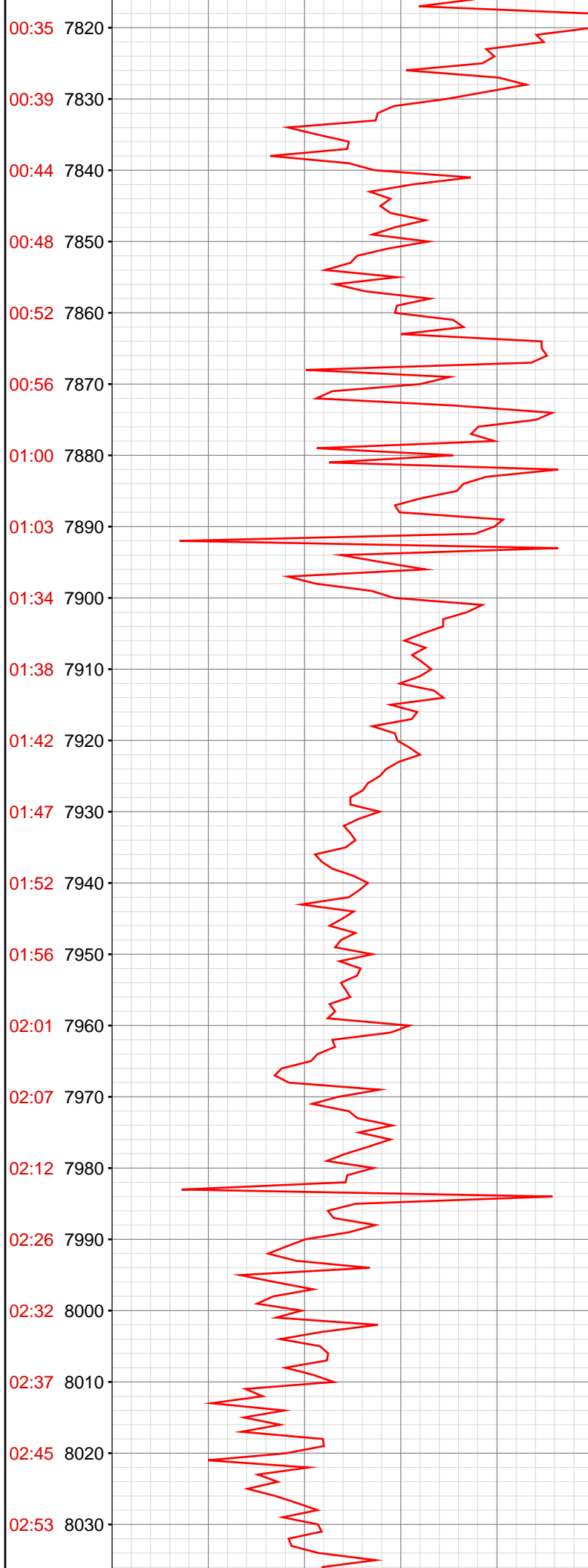
7248.20ft: SURVEY @ Connection at 7252.3
7248.20ft: SURVEY @ 7197 inc. 0.9 az. 257.7

7339.70ft: Connection at 7343.4
7339.70ft: SURVEY @ 7288 inc. 1.4 az. 260.1
7339.70ft: ZWOB from SideKick sk-04-09-1056 ZDiffPressure from SideKick sk-04-09-1056

7366.17ft: VIS45/WT9.8/PH/9







7880.18ft: 9.9\42VIS\8.9PH

7891.44ft: CIRC OUT GAS
7891.44ft: SURVEY @ 7837' Inc 2.3 Azi 248.5
7891.44ft: ZWOB from SideKick sk-04-09-1056
7891.44ft: ZDiffPressure from SideKick sk-04-09-1056
7891.44ft: Connection at 7892.2

7964.40ft: 9.9\42VIS\8.9PH

7982.71ft: SURVEY @ 7928' Inc 2.3 Azi 264.5
7982.71ft: ZWOB from SideKick sk-04-09-1056
7982.71ft: ZDiffPressure from SideKick sk-04-09-1056
7982.71ft: Connection at 7983.8

