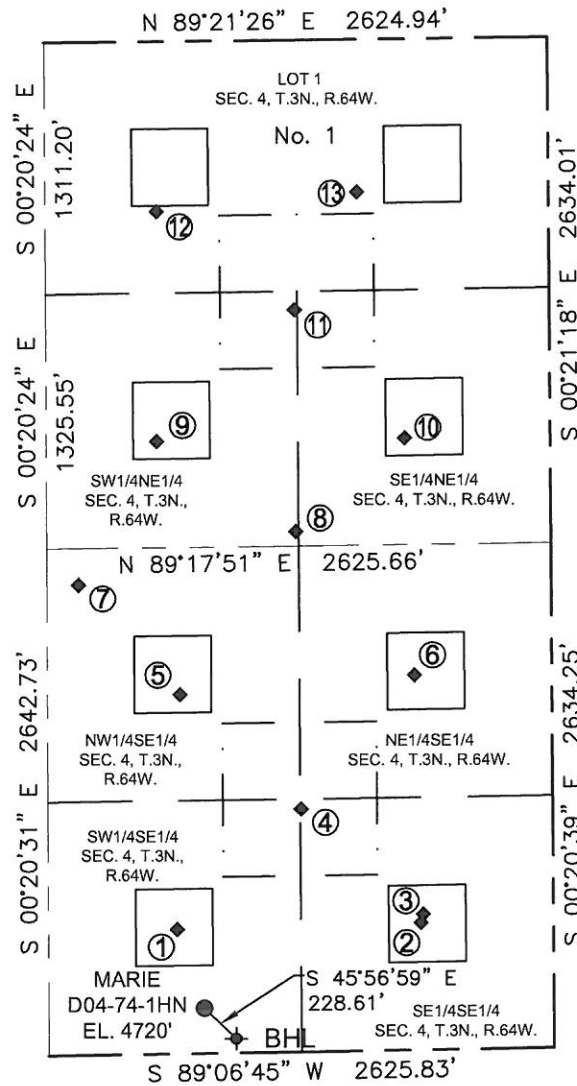


BRADLEY L. LAMAN, PLS 38345
COLORADO LICENSED PROFESSIONAL LAND SURVEYOR
FOR AND ON BEHALF OF P.F.S., LLC

SITE SKETCH

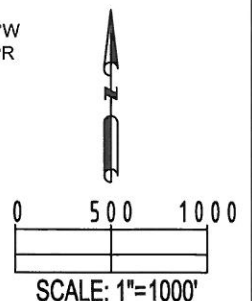
SECTION: 4
TOWNSHIP: 3N
RANGE: 64W



- | | | | | |
|--|---|--|---|--|
| ①
MARIE D4-15
SW1/4SE1/4
648' FSL
1951' FEL
LAT-40.24904°N
LONG-104.55362°W
WELL STATUS: PR | ②
MARIE D4-16
SE1/4SE1/4
665' FSL
688' FEL
LAT-40.24910°N
LONG-104.54909°W
WELL STATUS: PR | ③
GUTTERSEN D3-33D
SE1/4SE1/4
709' FSL
676' FEL
LAT-40.24922°N
LONG-104.54905°W
WELL STATUS: PR | ④
MARIE D4-23
SE1/4SE1/4
1268' FSL
1307' FEL
LAT-40.25075°N
LONG-104.55130°W
WELL STATUS: PR | ⑤
MARIE D 4-10
NW1/4SE1/4
1874' FSL
1930' FEL
LAT-40.25240°N
LONG-104.55352°W
WELL STATUS: PR |
| ⑥
MARIE D4-9
NE1/4SE1/4
1956' FSL
715' FEL
LAT-40.25264°N
LONG-104.54917°W
WELL STATUS: PR | ⑦
GUTTERSEN D4-21
NW1/4SE1/4
2451' FSL
2459' FEL
LAT-40.25398°N
LONG-104.55540°W
WELL STATUS: PR | ⑧
BURGHART D4-22
SW1/4NE1/4
2560' FNL
1326' FEL
LAT-40.25472°N
LONG-104.55134°W
WELL STATUS: PR | ⑨
KARCH BLUE D4-7
SW1/4NE1/4
2082' FNL
2044' FEL
LAT-40.25603°N
LONG-104.55391°W
WELL STATUS: PR | ⑩
GITTLEIN BLUE D4-08
SE1/4NE1/4
2079' FNL
759' FEL
LAT-40.25604°N
LONG-104.54930°W
WELL STATUS: PR |
| ⑪
KARCH D 4-17
SW1/4NE1/4
1405' FNL
1326' FEL
LAT-40.25789°N
LONG-104.55132°W
WELL STATUS: PR | ⑫
KARCH BLUE D4-2
LOT 1
884' FNL
2038' FEL
LAT-40.25932°N
LONG-104.55387°W
WELL STATUS: PR | ⑬
TWO E RANCH 1-4
LOT 1
794' FNL
998' FEL
LAT-40.25956°N
LONG-104.55014°W
WELL STATUS: PR | | |

LEGEND

- = PROPOSED WELL
- ◆ = BOTTOM HOLE
- ◆ = EXISTING WELL



FIELD
DATE:
06-11-13

DRAWING
DATE:
07-26-13

DRAWN BY:
KAD

CHECKED BY:
TJN