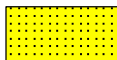


LOG created using LPLLOT VH Version 3.0, June 29, 2013, Copyright (C) 1999-2009 Pason Systems Corp.

OPERATOR: NOBLE ENERGY INC
WELL: TIMBRO LD19-73HN
LOCATION: SEC 19 T9N R58W
COUNTY: WELD
STATE: COLORADO
SPOT: 288' FSL; 300' FEL
ELEVATION: 4825' GL; 4849' KB
FIELD: WILDCAT
SPUD DATE: 6/21/2013
TD DATE: 6/23/2013
DATES LOGGED: 6/22/2013 - 6/23/2013
DEPTHS LOGGED: 800' - 5216' MD
LOGGERS: LAURA KELLOGG; CONOR PESICKA
DRILLING FLUID: LSND
DRILLING RIG: H&P 273
API: 05-123-36268
LOG TYPE: VERTICAL
SCALE: 1:240 (5 inches per 100 feet)
REMARKS: WELLSITE GEOLOGICAL SERVICES
 PROVIDED BY COLUMBINE LOGGING INC

LITHOLOGIES



Sandstone



Shaly Sandstone



Silty Shale

ENGINEERING SYMBOLS



Connection



Connection Gas



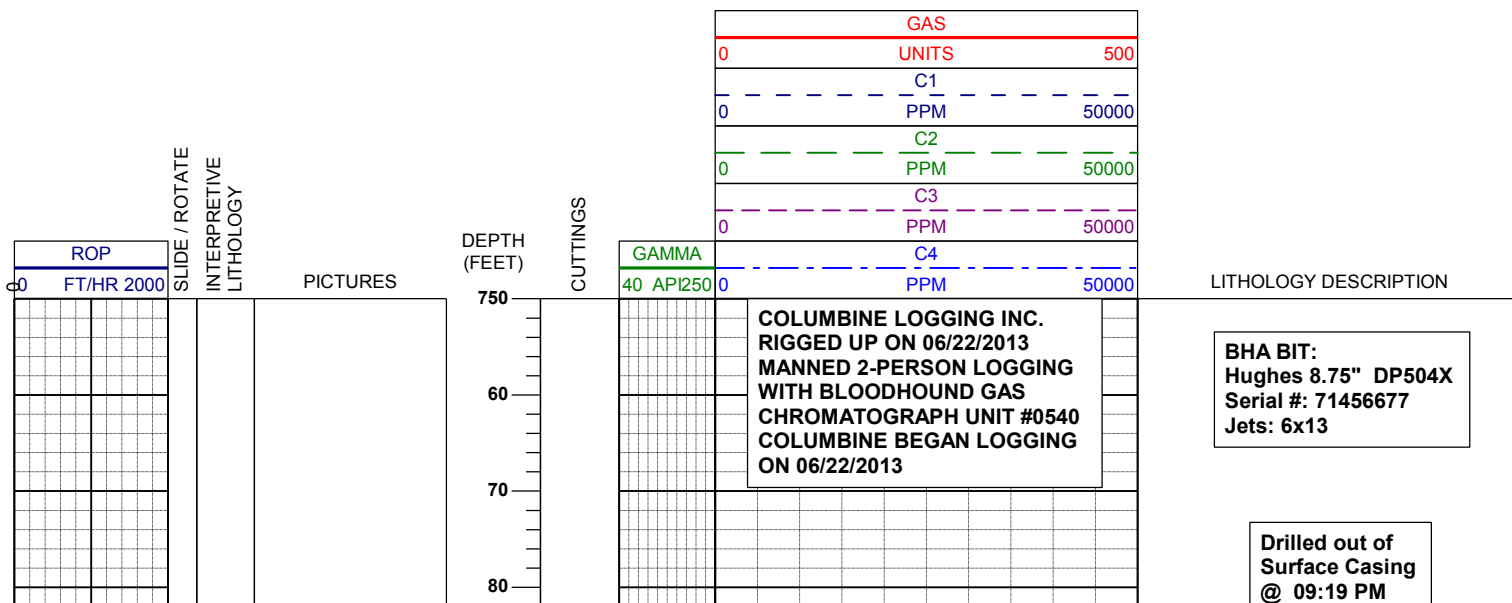
Arrow



Midnight Depth



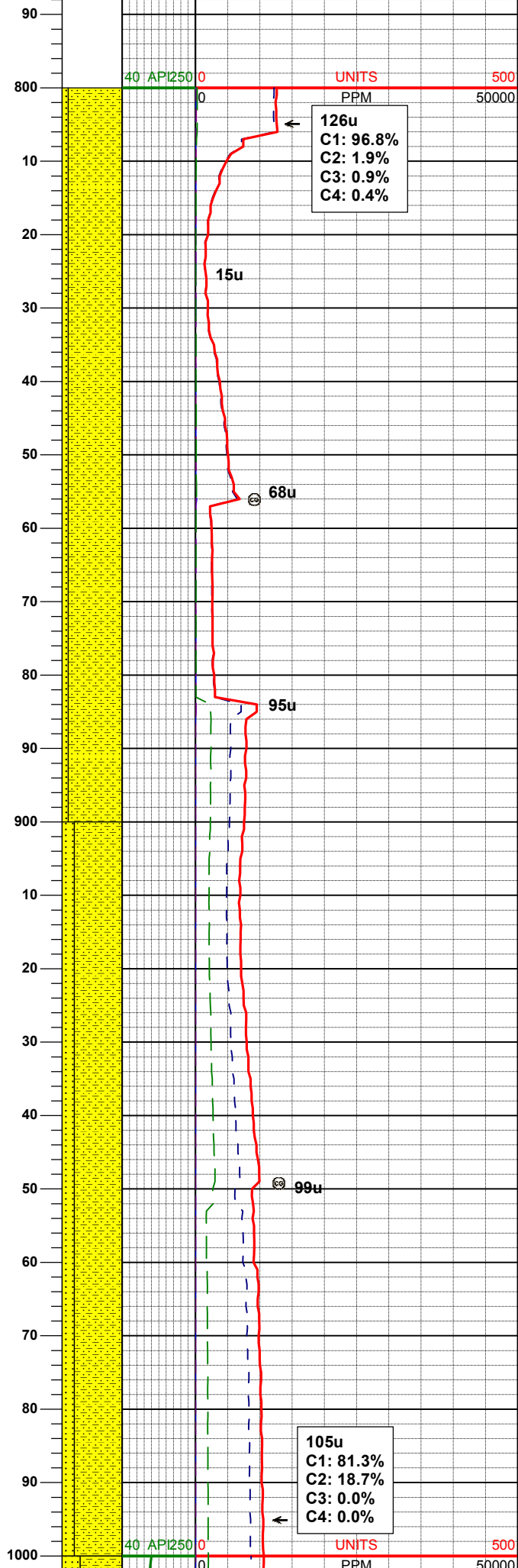
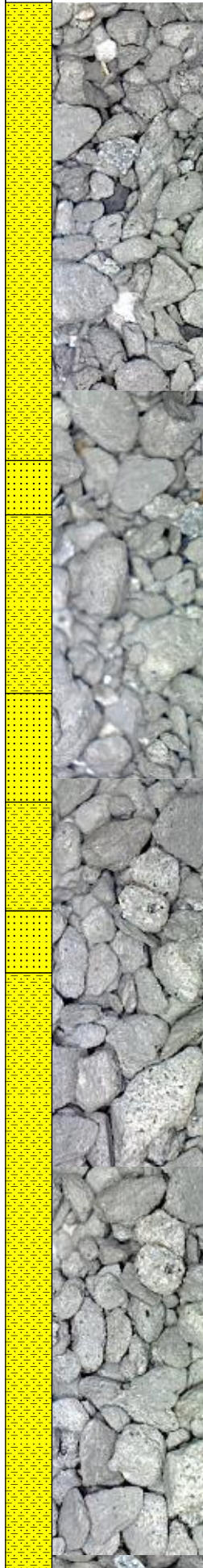
Arrow



06/22/2013

0 FT/HR 2000

0 FT/HR 2000



WT IN 8.40/ OUT 8.40
VIS IN 25/ OUT 25

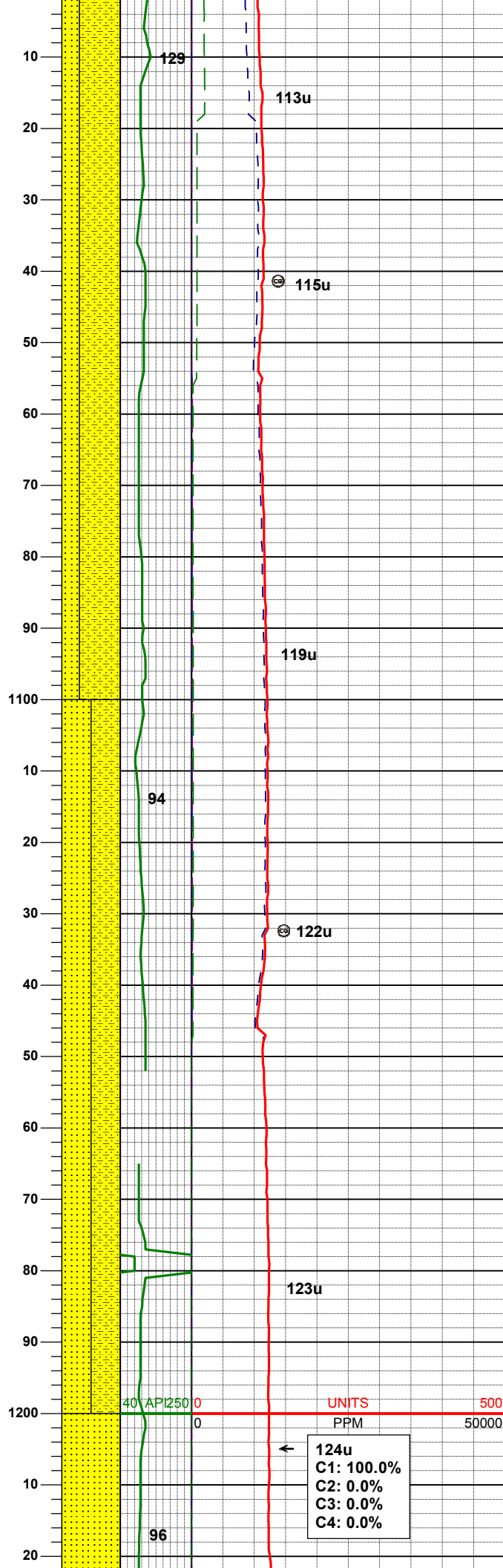
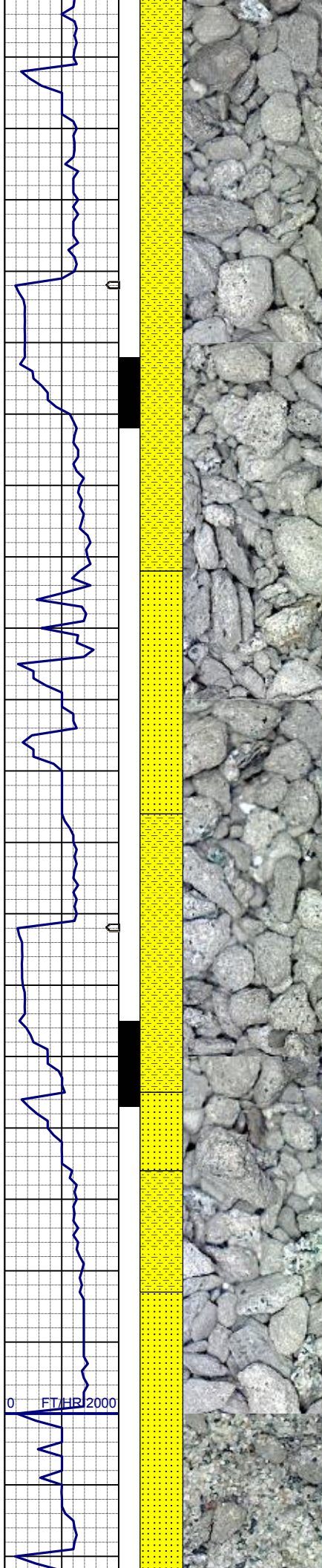
MD 816'
INC 0.1°
AZM 224.2°
TVD 816.00'

SHYSS: ltgy-gy, s&p ip, sbang, v fri,
vfgr, psrt, wrndd, abnt cly, arg cmt, sl
calc, tr lit frag
SS: ltgy-gy-trnsl, sbang-ang, p ind,
fgr, psrt, wrndd, arg cmt, abnt lit frag

MD 909'
INC 0.2°
AZM 210.0°
TVD 909.00'

SHYSS: ltgy-gy, s&p ip, sbang, v fri,
vfgr, psrt, wrndd, abnt cly, arg cmt, sl
calc, tr lit frag
SS: ltgy-gy-trnsl, sbang-ang, p ind,
fgr, psrt, wrndd, arg cmt, abnt lit frag

MD 1002'
INC 0.2°



AZM 237.9°
TVD 1002.00'

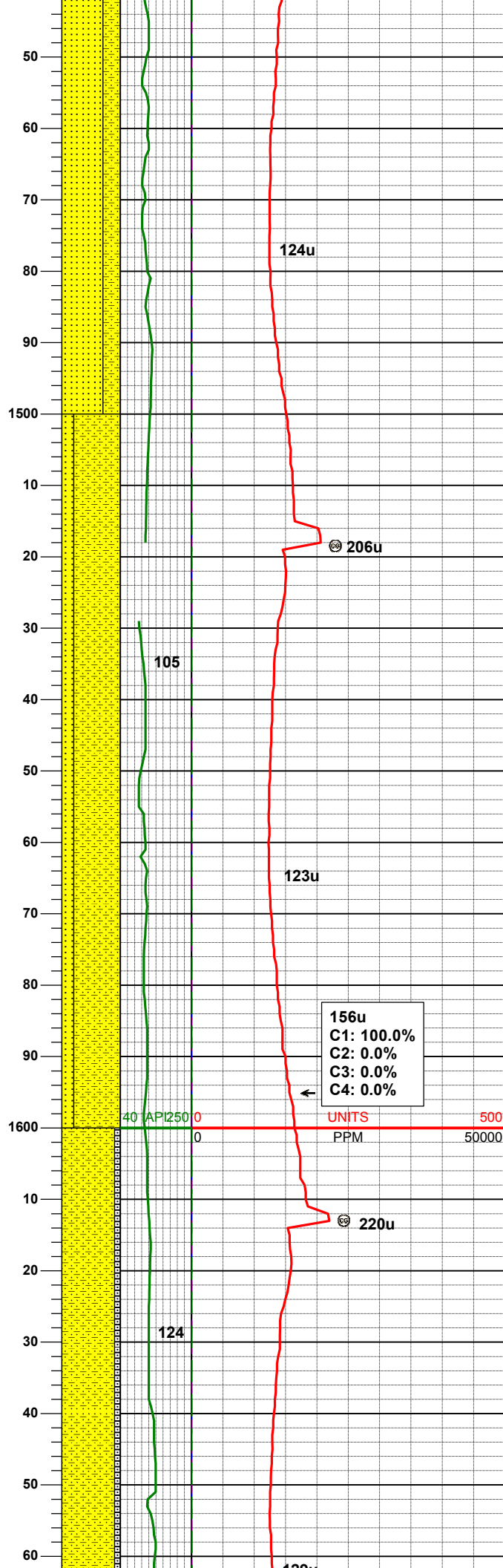
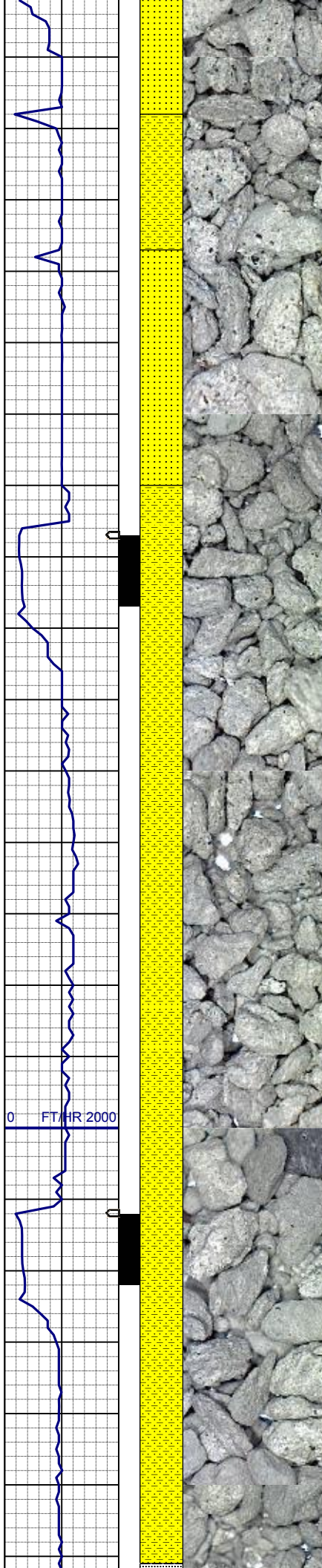
SHYSS: ltgy-gy, s&p ip, sbang, v fri,
vfgr, psrt, wrnnd, abnt cly, arg cmt, sl
calc, tr lit frag
SS: ltgy-gy-trnsl, sbang-ang, p ind,
fgr, psrt, wrnnd, arg cmt, abnt lit frag,
tr glau

MD 1095'
INC 1.7°
AZM 317.4°
TVD 1094.98'

SHYSS: ltgy-gy, s&p ip, sbang, v fri,
vfgr, psrt, wrnnd, abnt cly, arg cmt, sl
calc, tr lit frag
SS: ltgy-gy-trnsl, sbang-ang, p ind,
fgr, psrt, wrnnd, arg cmt, abnt lit frag,
tr glau

MD 1188'
INC 3.7°
AZM 300.3°
TVD 1187.88'

124u
C1: 100.0%
C2: 0.0%
C3: 0.0%
C4: 0.0%



SS: ltgy-gy-trnsl, sbang-ang, p ind, fgr, psrt, wrnnd, arg cmt, abnt lit frag, tr glau
SHYSS: ltgy-gy, s&p ip, sbang, v fri, vfgr, psrt, wrnnd, abnt cly, arg cmt, sl calc, tr lit frag

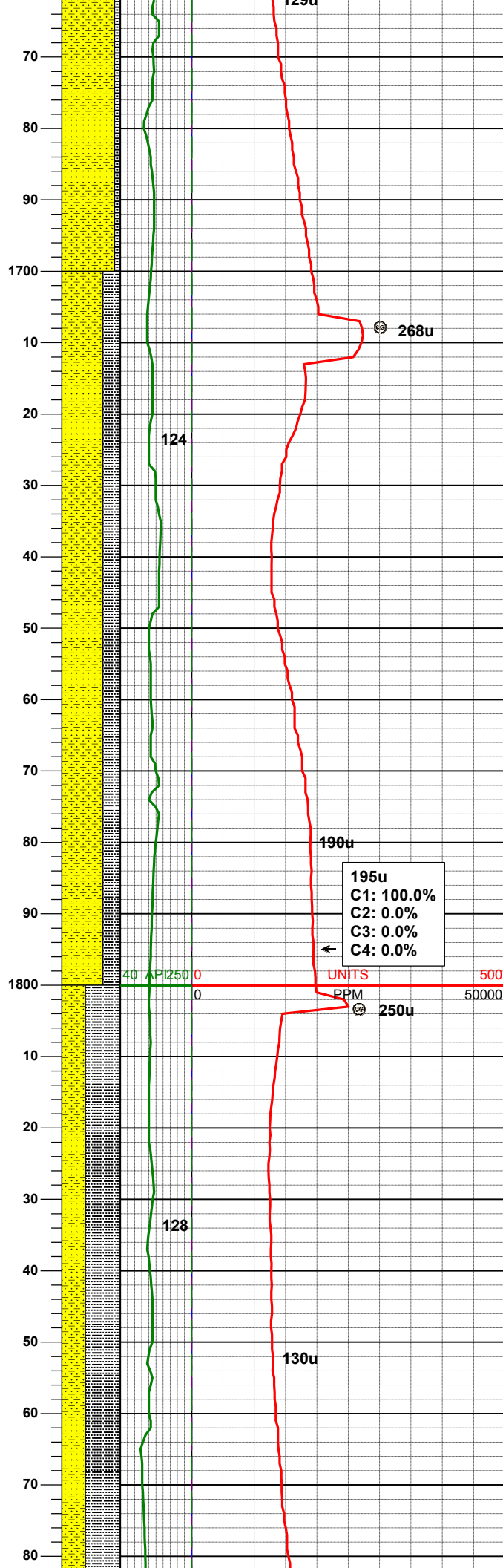
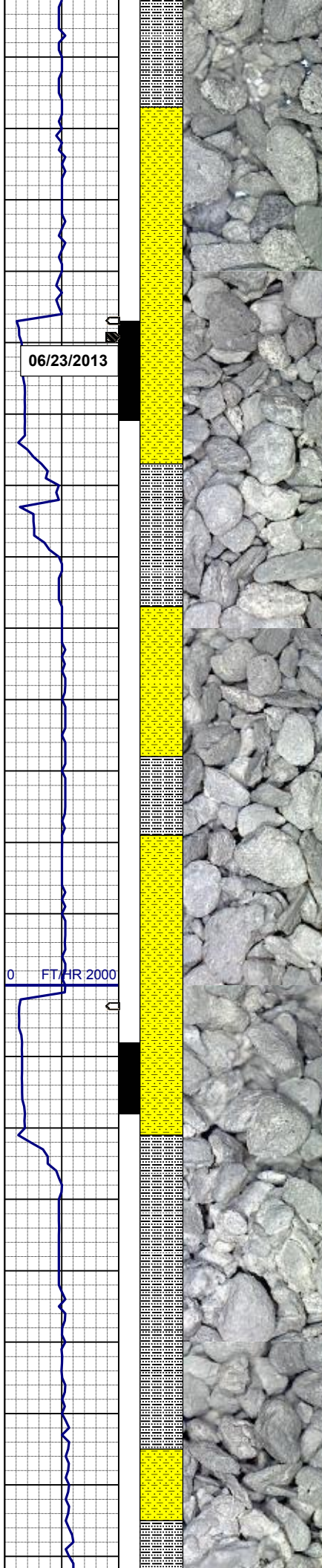
MD 1467'
INC 8.0°
AZM 256.4°
TVD 1465.44'

SHYSS: ltgy-gy, s&p ip, sbang, v fri, vfgr, psrt, wrnnd, abnt cly, arg cmt, sl calc, tr lit frag
SS: ltgy-gy-trnsl, sbang-ang, p ind, fgr, psrt, wrnnd, arg cmt, abnt lit frag, tr glau

MD 1562'
INC 9.8°
AZM 257.2°
TVD 1559.29'

SHYSS: ltgy-gy, s&p ip, sbang, v fri, vfgr, psrt, wrnnd, abnt cly, arg cmt, sl calc, tr lit frag
SLTYSH: ltgy-gy, sbblky-sbplty, sft, gt-sdy tex, arg cmt

MD 1657'



INC 111.0°
AZM 254.6°
TVD 1652.73'

SHYSS: ltgy-gy, s&p ip, sbang, v fri,
vfgr, psrt, wrndd, abnt cly, arg cmt, sl
calc, tr lit frag
SLTYSH: ltgy-gy, sbblky-sbplty, sft, gt
-sdy tex, arg cmt

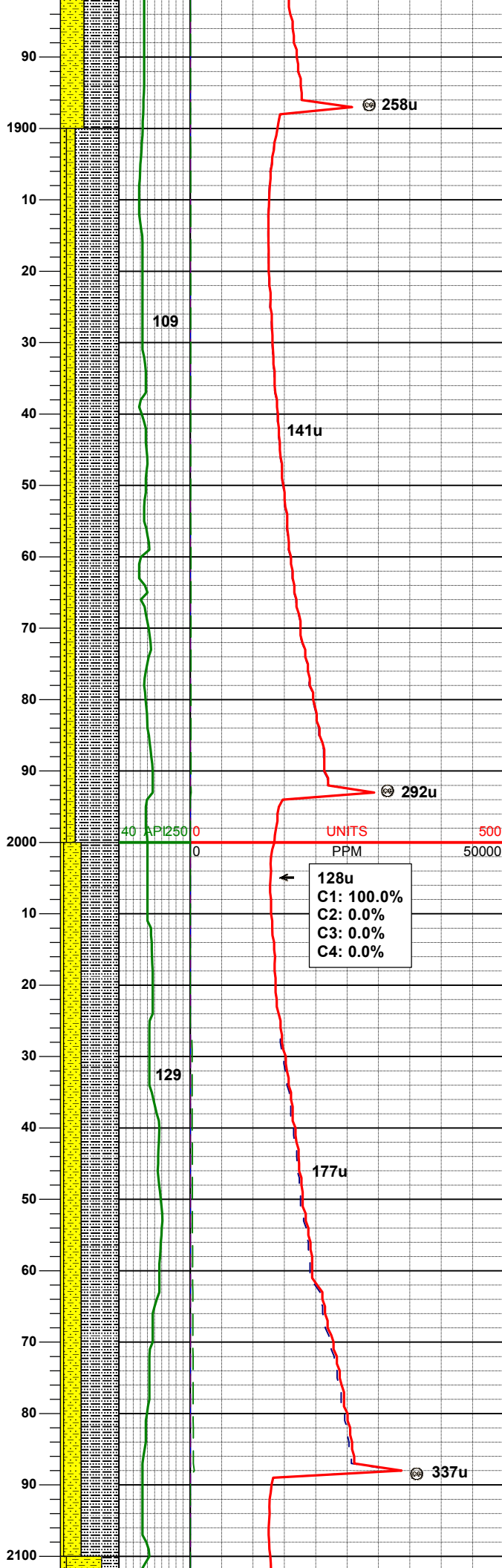
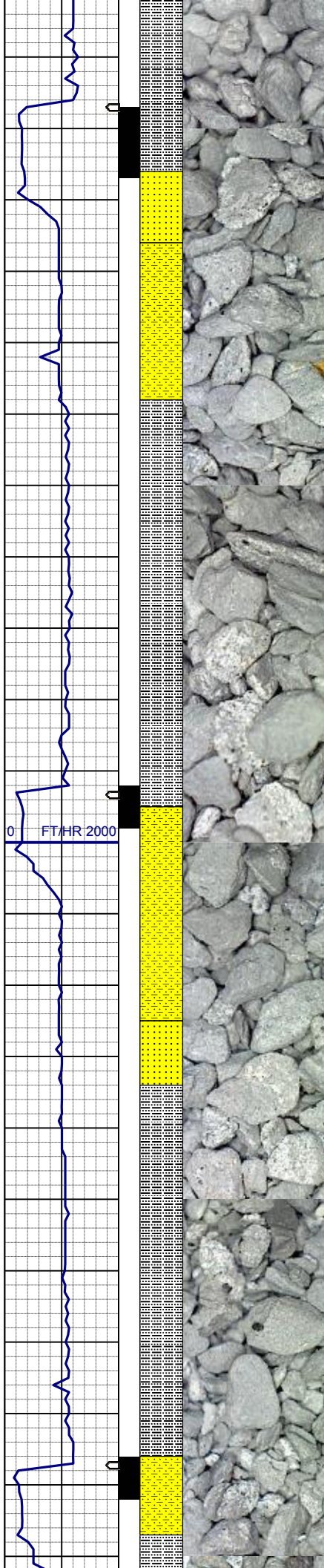
MD 1752'
INC 12.0°
AZM 253.2°
TVD 1745.82'

195u
C1: 100.0%
C2: 0.0%
C3: 0.0%
C4: 0.0%

WT IN 8.45/ OUT 8.45
VIS IN 27/ OUT 27

MD 1847'
INC 13.3°
AZM 254.3°
TVD 1838.51'

SLTYSH: ltgy-gy, sbblky-sbplty, sft, gt
-sdy tex, arg cmt
SHYSS: ltgy-gy, s&p ip, sbang, v fri,
vfgr, psrt, wrndd, abnt cly, arg cmt, sl
calc



MD 1942'
INC 13.9°
AZM 256.7°
TVD 1930.85'

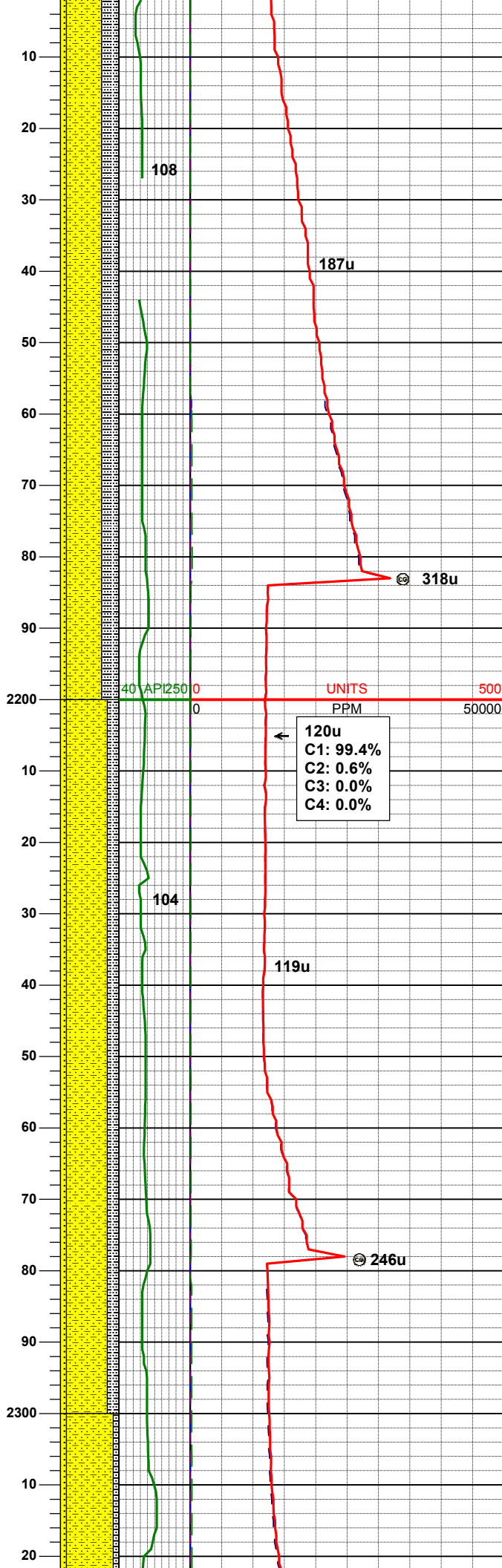
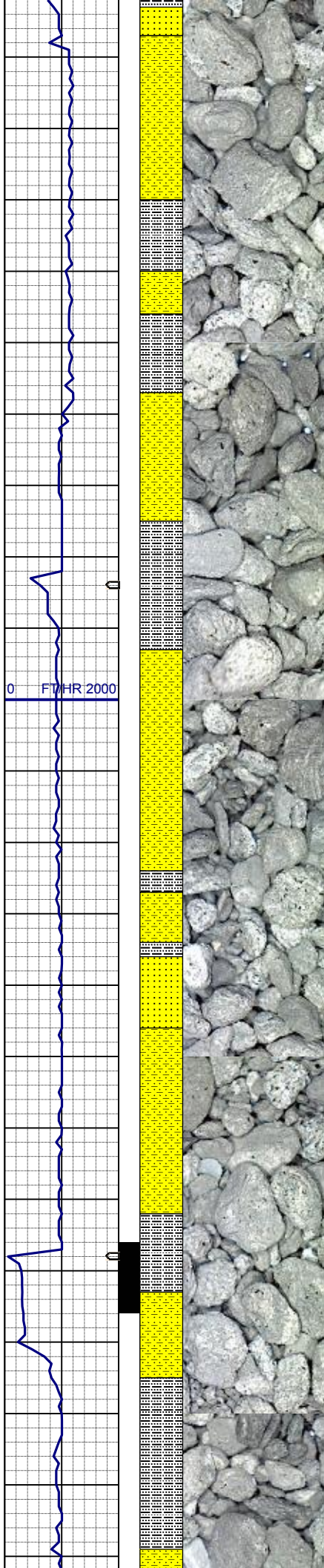
SLTYSH: ltgy-gy, sbbiky-sbply, sft, gt
-sdy tex, arg cmt
SHYSS: ltgy-gy, s&p ip, sbang, v fri,
vfgr, psrt, wrndd, abnt cly, arg cmt, sl
calc
SS: ltgy-gy-trnsl, sbang-ang, p ind,
fgr, psrt, wrndd, arg cmt, tr lit frag, tr
glau

WT IN 8.45/ OUT 8.45
VIS IN 27/ OUT 27

128u
C1: 100.0%
C2: 0.0%
C3: 0.0%
C4: 0.0%

MD 2036'
INC 14.2°
AZM 253.6°
TVD 2022.04'

SLTYSH: ltgy-gy, sbbiky-sbply, sft, gt
-sdy tex, arg cmt
SHYSS: ltgy-gy, s&p ip, sbang, v fri,
vfgr, psrt, wrndd, abnt cly, arg cmt, sl
calc
SS: ltgy-gy-trnsl, sbang-ang, p ind,
fgr, psrt, wrndd, arg cmt, tr lit frag, tr
glau



MD 2131'
INC 14.9°
AZM 255.3°
TVD 2113.99'

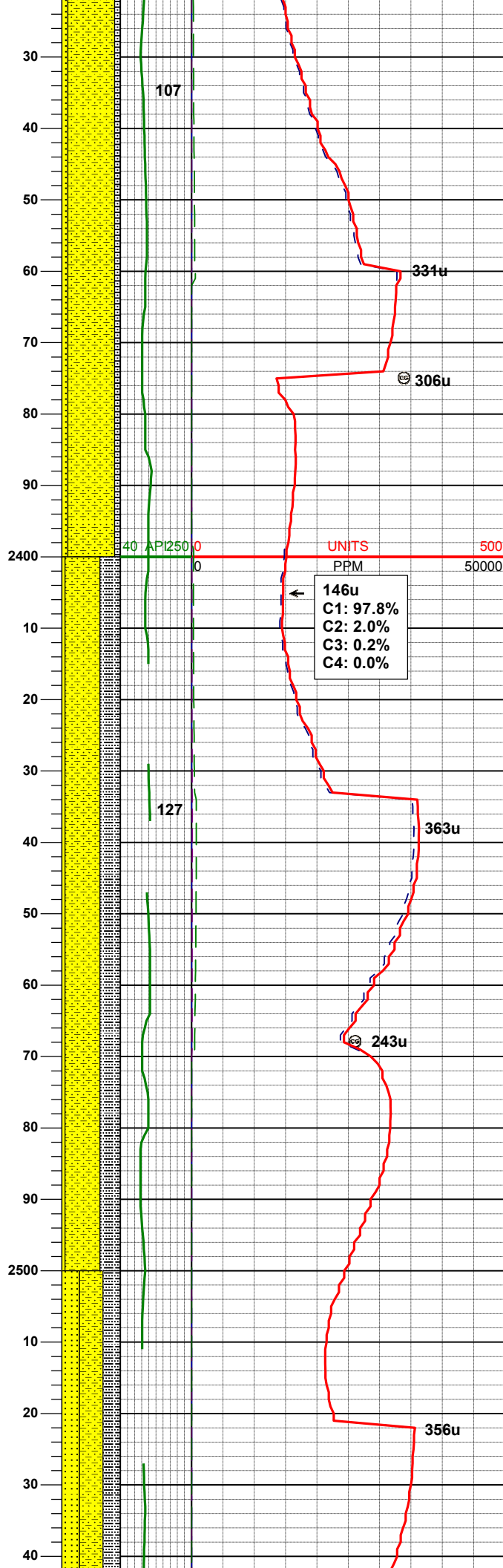
SHYSS: ltgy-gy, s&p ip, sbang, v fri, vfgr, psrt, wrndd, abnt cly, arg cmt, sl calc
SLTYSH: ltgy-gy, sbblky-sbplty, sft, gt -sdy tex, arg cmt
SS: ltgy-gy-trnsl, sbang-ang, p ind, fgr, psrt, wrndd, arg cmt, tr lit frag, tr glau

MD 2226'
INC 14.4°
AZM 253.7°
TVD 2205.99'

SHYSS: ltgy-gy, s&p ip, sbang, v fri, vfgr, psrt, wrndd, abnt cly, arg cmt, sl calc
SLTYSH: ltgy-gy, sbblky-sbplty, sft, gt -sdy tex, arg cmt
SS: ltgy-gy-trnsl, sbang-ang, p ind, fgr, psrt, wrndd, arg cmt, tr lit frag, tr glau

MD 2321'
INC 14.6°
AZM 253.9°
TVD 2305.99'

AZM 256.4
TVD 2297.88'



SHYSS: ltgy-gy, s&p ip, sbang, v fri, vfgr, psrt, wrnnd, abnt cly, arg cmt, sl calc
SLTYSH: ltgy-gy, sbblky-sbplty, sft, gt -sdy tex, arg cmt
SS: ltgy-gy-trnsl, sbang-ang, p ind, fgr, psrt, wrnnd, arg cmt, tr lit frag, tr glau

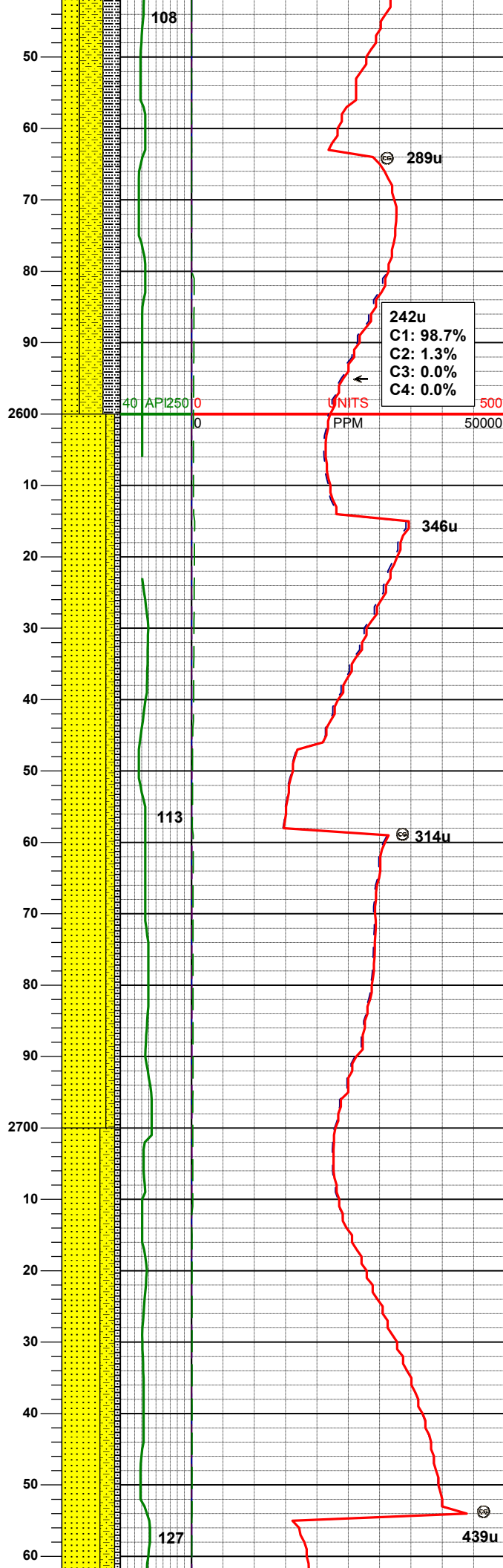
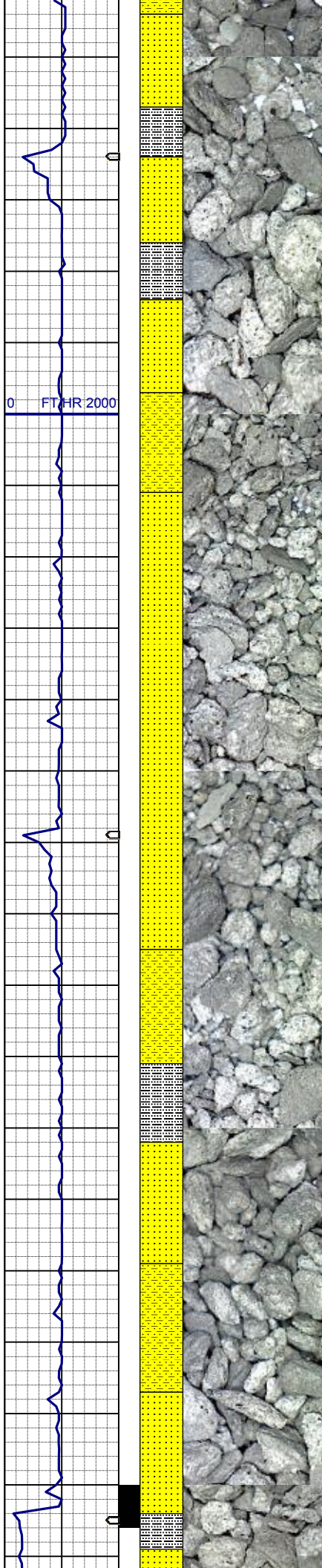
MD 2416'
INC 14.5°
AZM 256.4°
TVD 2389.83'

SHYSS: ltgy-gy, s&p ip, sbang, v fri, vfgr, psrt, wrnnd, abnt cly, arg cmt, sl calc
SLTYSH: ltgy-gy, sbblky-sbplty, sft, gt -sdy tex, arg cmt
SS: ltgy-gy-trnsl, sbang-ang, p ind, fgr, psrt, wrnnd, arg cmt, tr lit frag, tr glau

WT IN 8.40/ OUT 8.40
VIS IN 27/ OUT 27

MD 2510'
INC 14.5°
AZM 256.5°
TVD 2480.83'

SHYSS: ltgy-gy, s&p ip, sbang, v fri



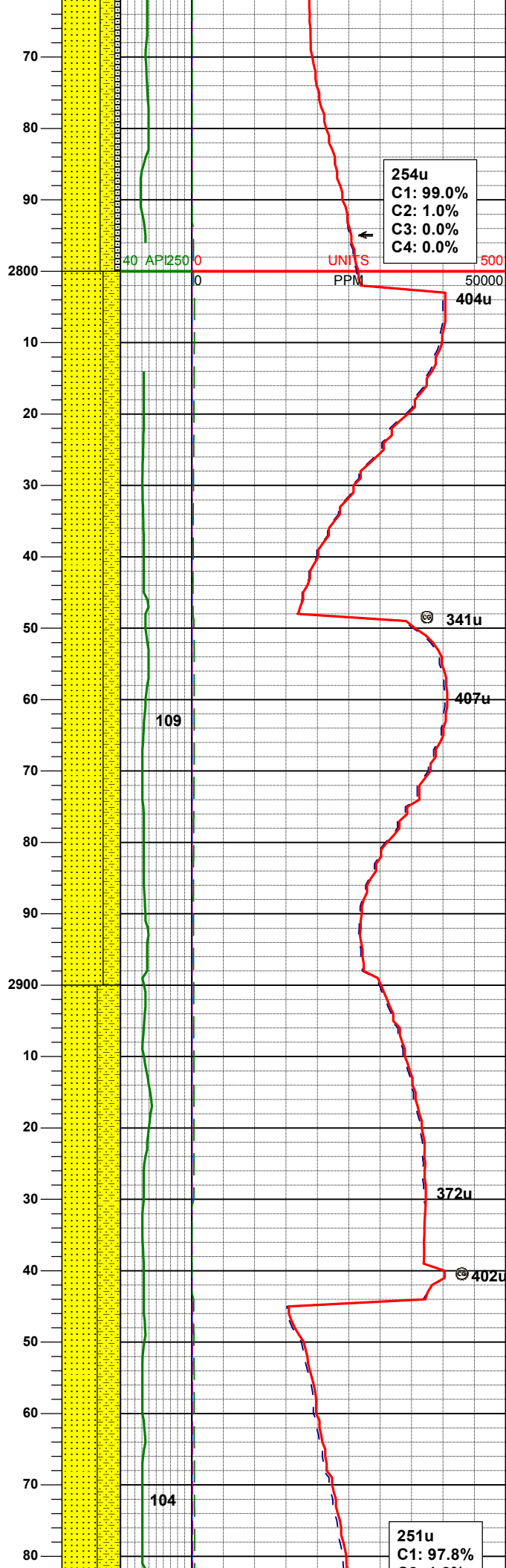
vfgr, psrt, wrnnd, abnt cly, arg cmt, sl
calc
SLTYSH: ltgy-gy, sbblky-sbply, sft, gt
-sdy tex, arg cmt
SS: ltgy-gy-trnsl, sbang-ang, p ind,
fgr, psrt, wrnnd, arg cmt, tr lit frag, tr
glau

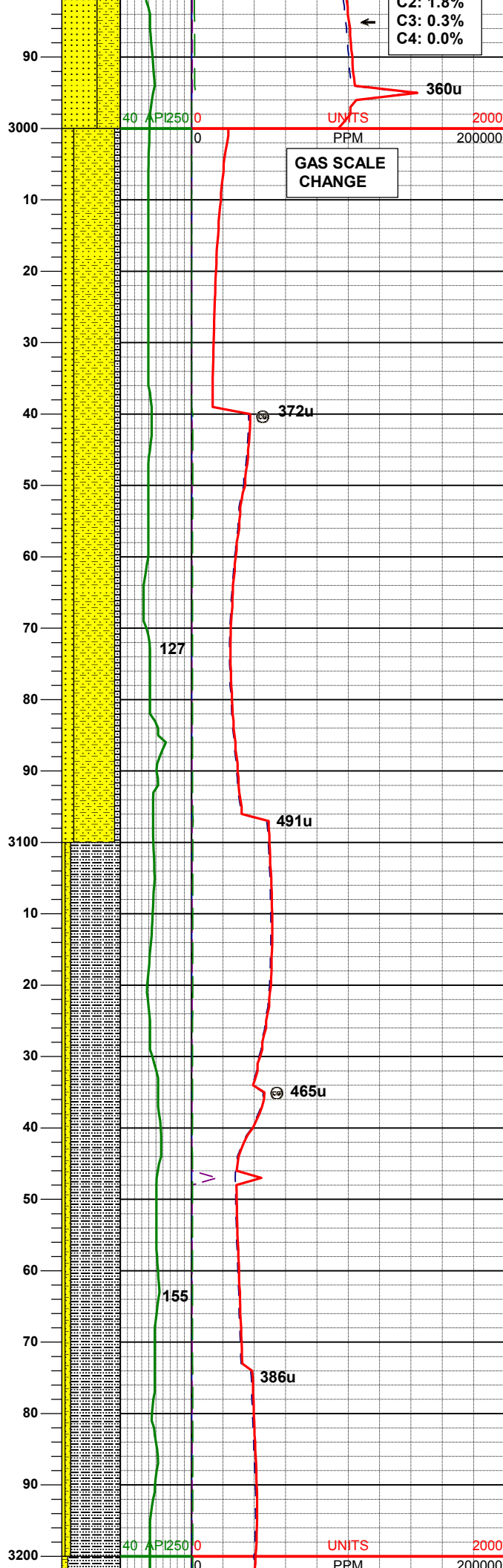
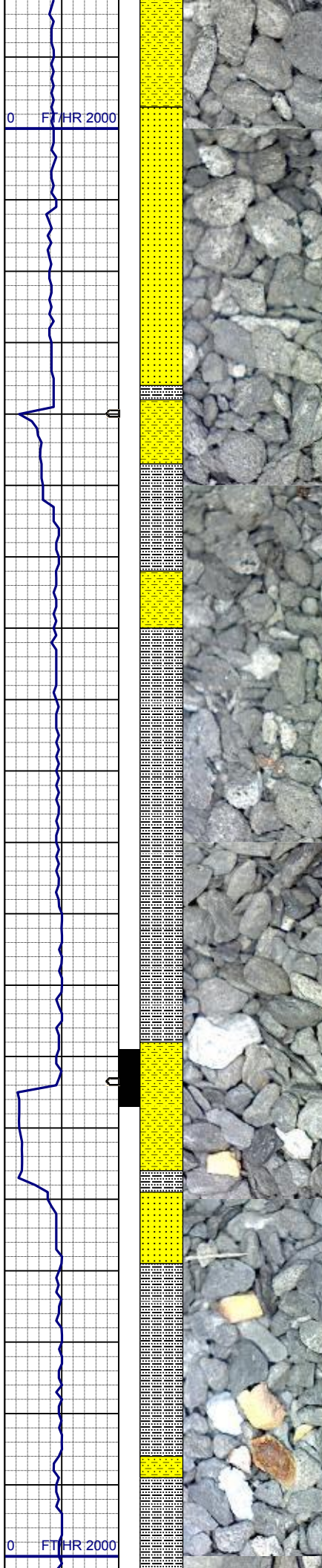
MD 2605'
INC 14.9°
AZM 257.9°
TVD 2572.73'

SS: ltgy-wh-trnsl, sbang-ang, p ind,
fgr, psrt, wrnnd, arg cmt, tr lit frag, tr
glau
SHYSS: ltgy-gy, s&p ip, sbang, v fri,
vfgr, psrt, wrnnd, abnt cly, arg cmt, sl
calc
SLTYSH: ltgy-gy, sbblky-sbply, sft, gt
tex, arg cmt

MD 2700'
INC 15.0°
AZM 257.6°
TVD 2664.51'

SS: ltgy-wh-trnsl, sbang-ang, p ind,
fgr, psrt, wrnnd, arg cmt, tr lit frag, tr
glau
SHYSS: ltgy-gy, s&p ip, sbang, v fri,
vfgr, psrt, wrnnd, abnt cly, arg cmt, sl
calc
SLTYSH: ltgy-gy, sbblky-sbply, sft, gt
tex, arg cmt





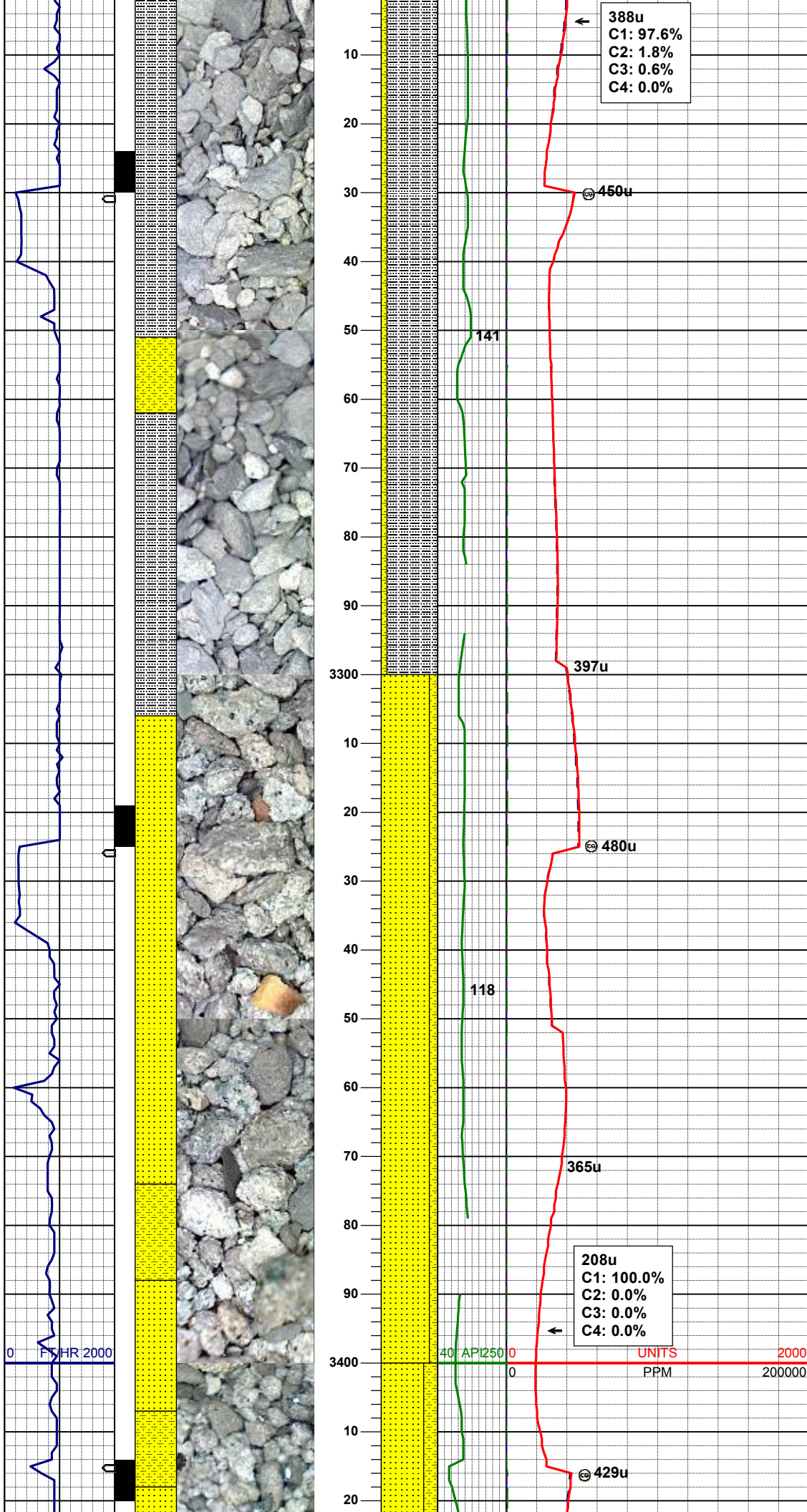
INC 13.8°
AZM 257.1°
TVD 2939.29'

SHYSS: ltgy-gy, s&p ip, sbang, v fri, vfgr, psrt, wrndd, abnt cly, arg cmt, sl calc
SS: gy-wh-trnsl, sbang-ang, p ind, fgr, psrt, wrndd, arg cmt, tr lit frag, tr glau
SLTYSH: ltgy-gy, sbbiky-sbply, sft, gt -sly tex, arg cmt

MD 3079'
INC 12.1°
AZM 253.6°
TVD 3031.87'

SLTYSH: ltgy-gy, sbbiky-sbply, sft, gt -sly tex, arg cmt
SHYSS: ltgy-gy, s&p ip, sbang, v fri, vfgr, psrt, wrndd, abnt cly, arg cmt, sl calc
SS: gy-wh-trnsl, sbang-ang, p ind, fgr, psrt, wrndd, arg cmt, tr lit frag, tr glau

MD 3174'
INC 11.9°
AZM 257.6°
TVD 3124.80'

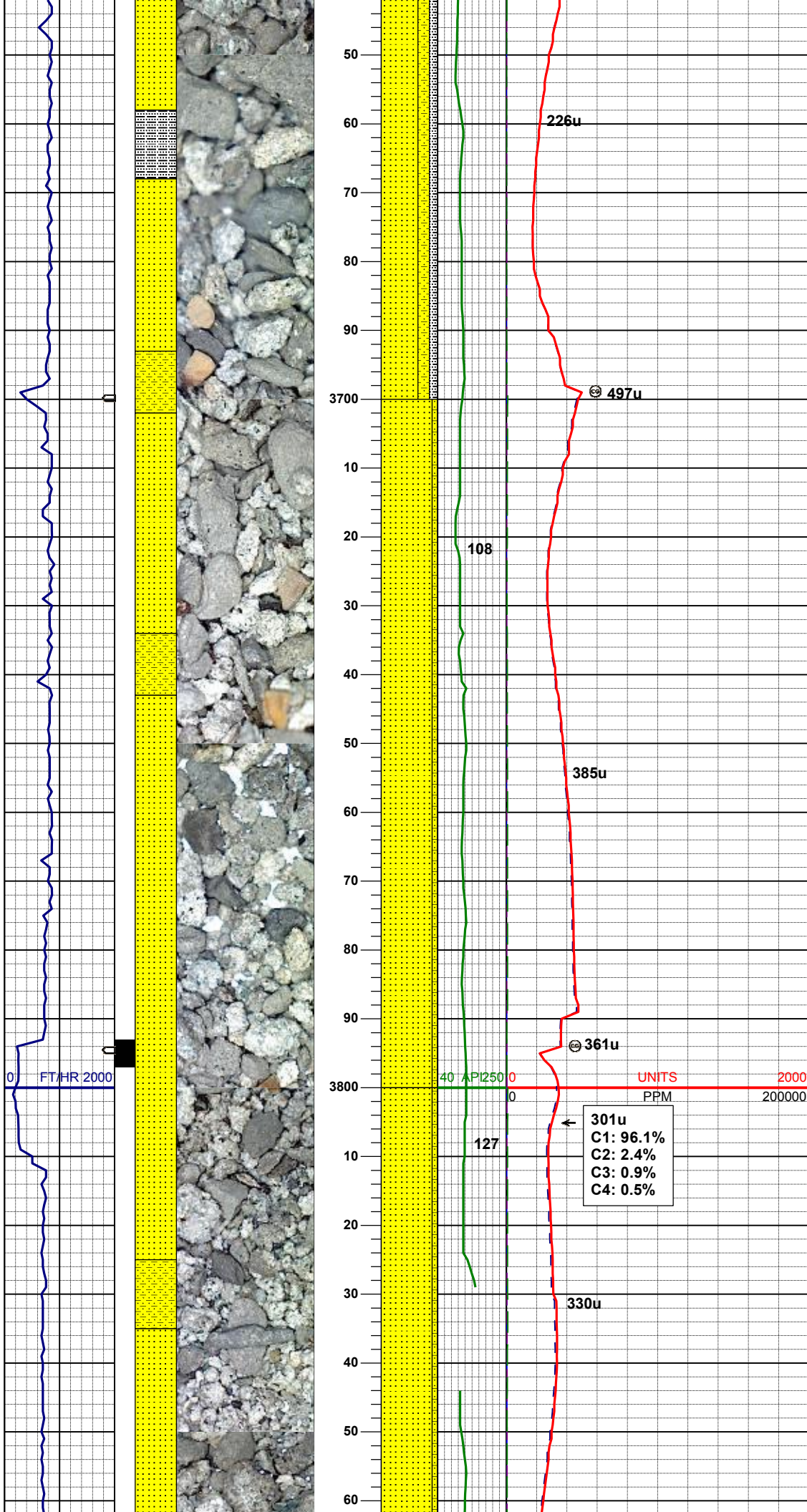


SLTYSH: ltgy-gy, sbblky-sbply, sft, gt
-sly tex, arg cmt
SHYSS: ltgy-gy, s&p ip, sbang, v fri,
vfgr, psrt, wrndd, abnt cly, arg cmt, sl
calc

MD	3269'
INC	12.4°
AZM	259.2°
TVD	3217.67'

SS: gy-wh-trnsl, sbang-ang, p ind, fgr,
psrt, wrndd, arg cmt, tr lit frag, tr glau
SHYSS: ltgy-gy, s&p ip, sbang, v fri,
vfgr, psrt, wrndd, abnt cly, arg cmt, sl
calc

MD	3364'
INC	13.8°
AZM	256.5°
TVD	3310.20'



SS: gy-wh-trnsl, sbang-ang, p ind, fgr, psrt, wrnnd, arg cmt, tr lit frag, tr glau
SHYSS: ltgy-gy, s&p ip, sbang, v fri, vfgr, psrt, wrnnd, abnt cly, arg cmt, sl calc
SLTYSH: ltgy-gy, sbblky-sbplty, sft, gt-slty tex, arg cmt

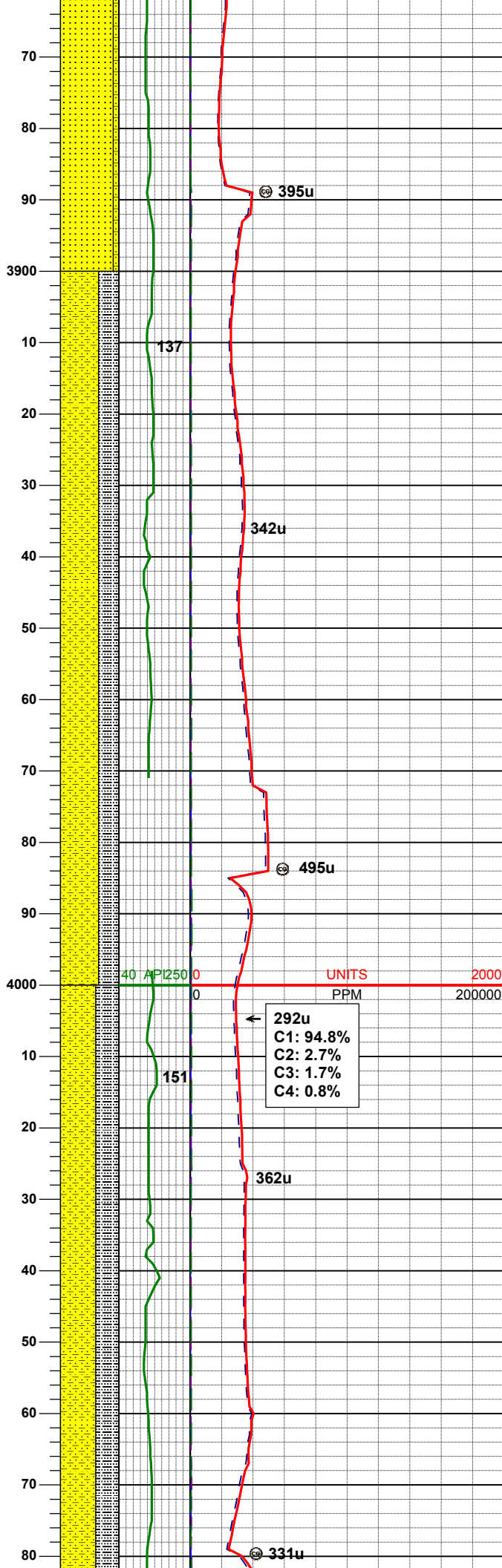
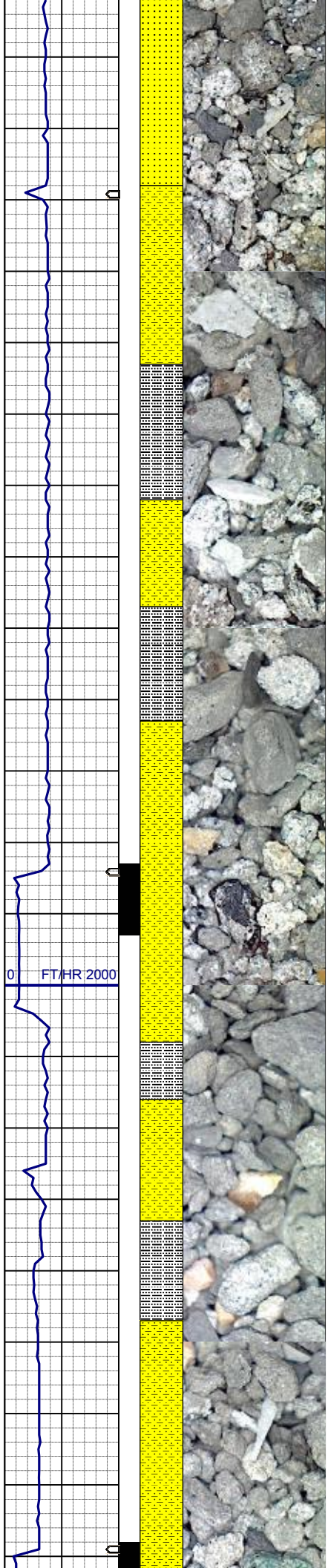
MD	3743'
INC	17.5°
AZM	255.5°
TVD	3675.11'

SS: gy-wh-trnsl, sbang-ang, p ind, fgr, psrt, wrnnd, arg cmt, tr lit frag, tr glau
SHYSS: ltgy-gy, s&p ip, sbang, v fri, vfgr, psrt, wrnnd, abnt cly, arg cmt, sl calc

301u
C1: 96.1%
C2: 2.4%
C3: 0.9%
C4: 0.5%

MD	3838'
INC	17.1°
AZM	255.5°
TVD	3765.81'

SS: gy-wh-trnsl, sbang-ang, p ind, fgr, psrt, wrnnd, arg cmt, tr lit frag, tr glau
SHYSS: ltgy-gy, s&p ip, sbang, v fri, vfgr, psrt, wrnnd, abnt cly, arg cmt, sl calc

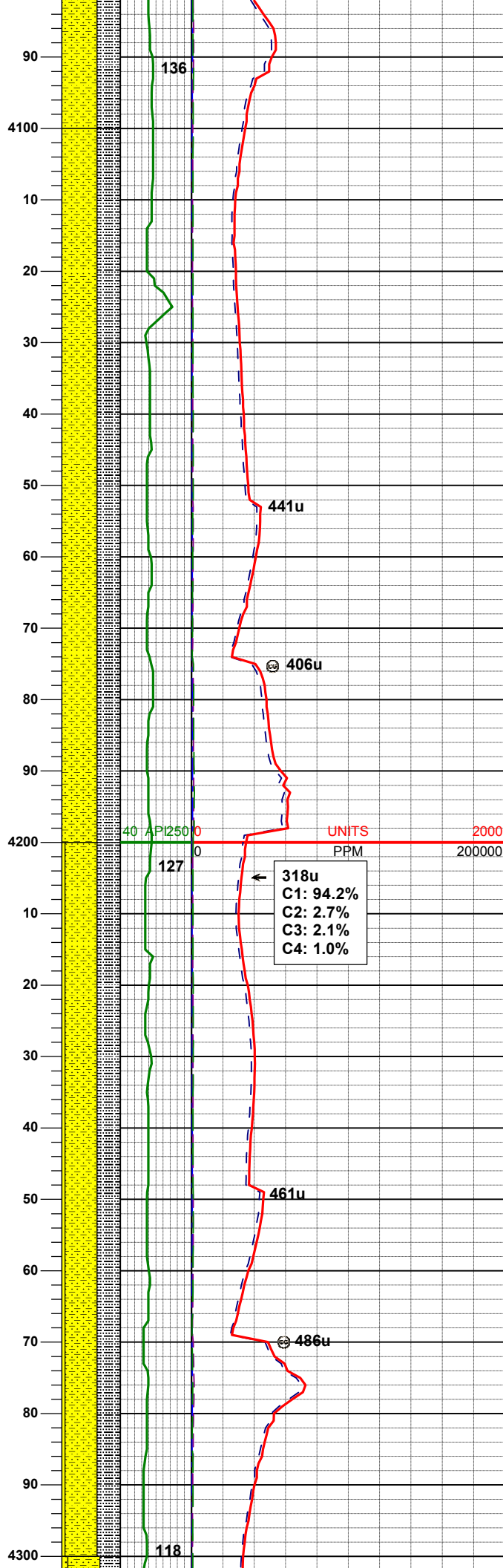
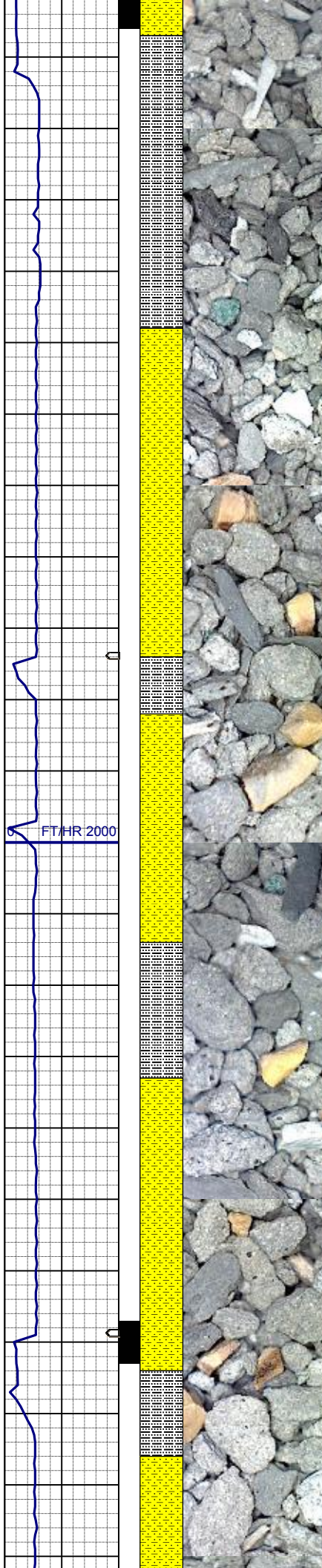


MD 3933'
INC 15.6°
AZM 252.9°
TVD 3856.97'

SHYSS: ltgy-gy, s&p ip, sbang, v fri,
vfgr, psrt, wrndd, abnt cly, arg cmt, sl
calc
SLTYSH: ltgy-gy, sbblky-sbplty, sft, gt
-slty tex, arg cmt

MD 4028'
INC 14.6°
AZM 256.0°
TVD 3948.69'

SHYSS: ltgy-gy, s&p ip, sbang, v fri,
vfgr, psrt, wrndd, abnt cly, arg cmt, sl
calc
SLTYSH: ltgy-gy, sbblky-sbplty, sft, gt
-slty tex, arg cmt

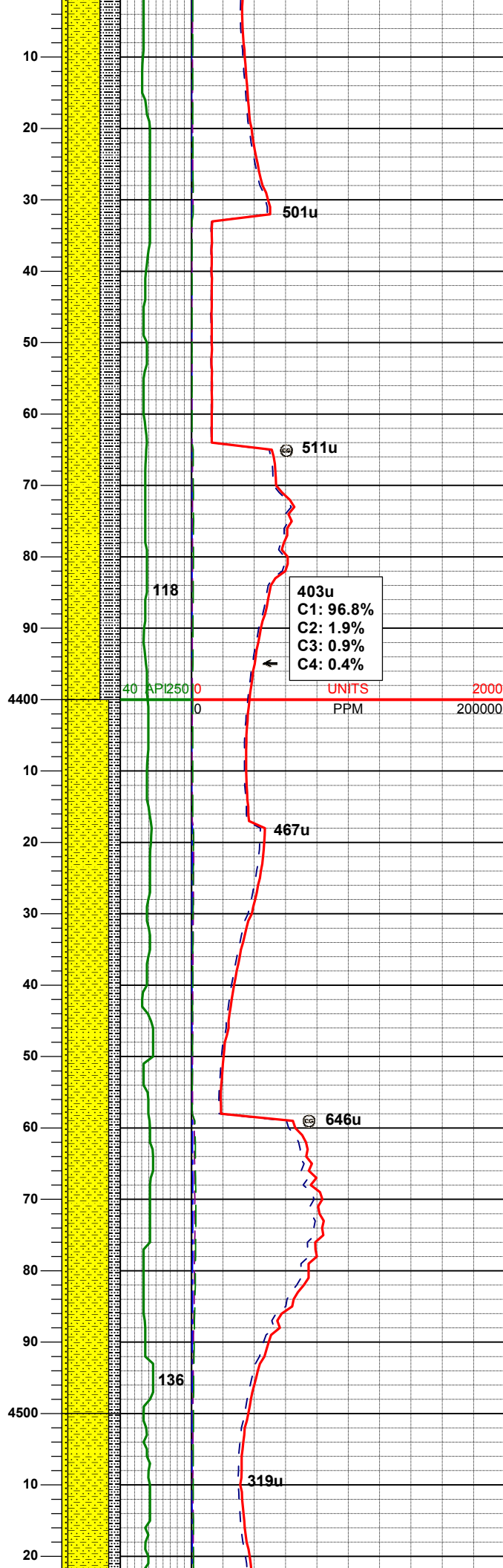
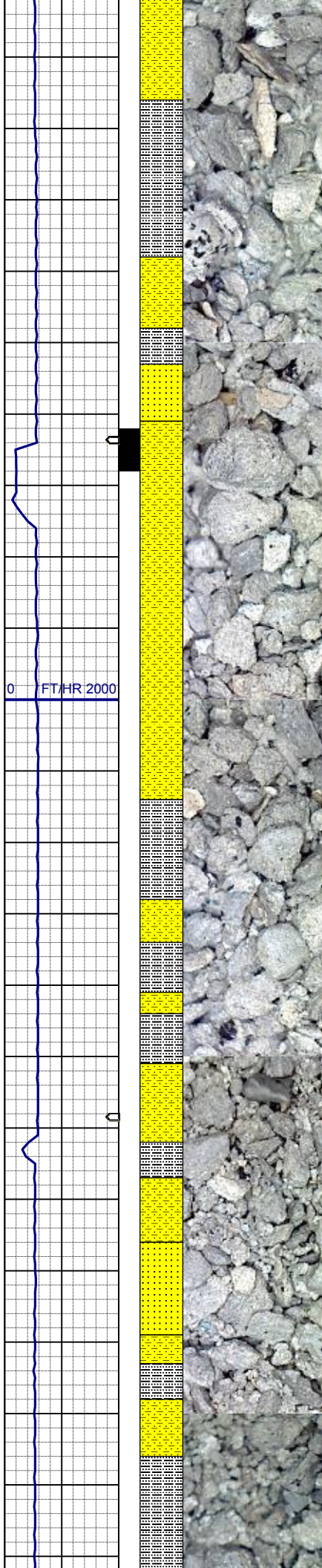


MD 4122'
INC 14.1°
AZM 255.5°
TVD 4039.76'

SHYSS: ltgy-gy, s&p ip, sbang, v fri,
vfgr, psrt, wrndd, abnt cly, arg cmt, sl
calc
SLTYSH: ltgy-gy, sbbiky-sbply, sft, gt
-sly tex, arg cmt

MD 4217'
INC 13.3°
AZM 254.3°
TVD 4132.05'

SHYSS: ltgy-gy, s&p ip, sbang, v fri,
vfgr, psrt, wrndd, abnt cly, arg cmt, sl
calc
SLTYSH: ltgy-gy, sbbiky-sbply, sft, gt
-sly tex, arg cmt
SS: gy-wh-trnsl, sbang-ang, p ind, fgr,
psrt, wrndd, arg cmt, tr lit frag, tr glau



MD 4312'
INC 12.8°
AZM 254.6°
TVD 4224.60'

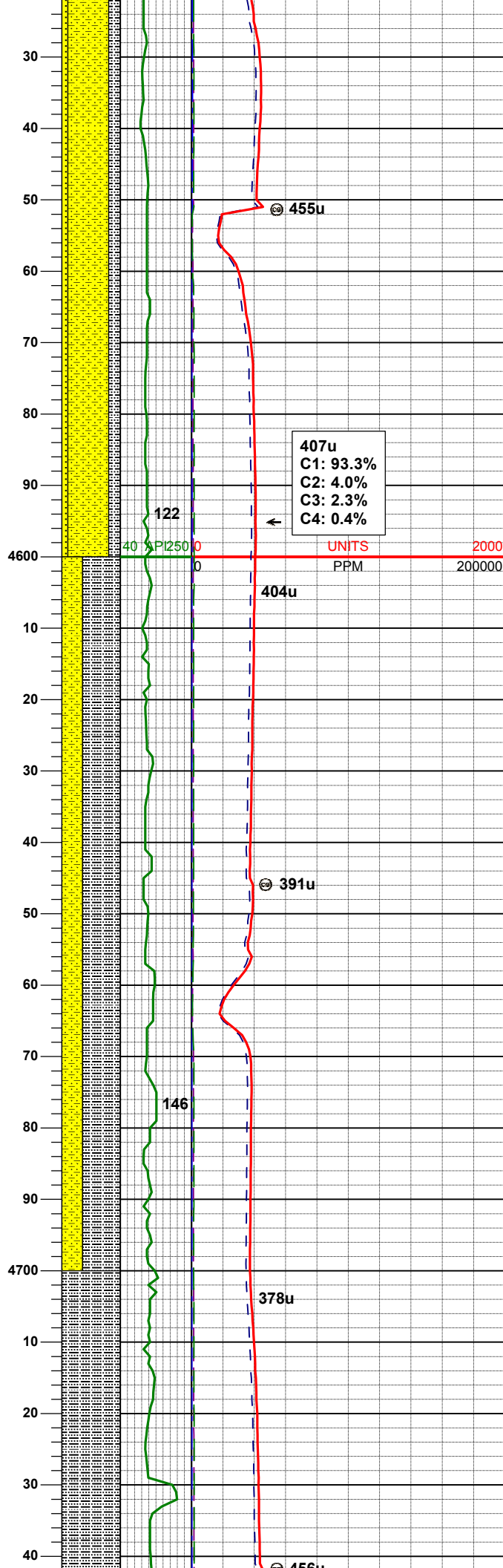
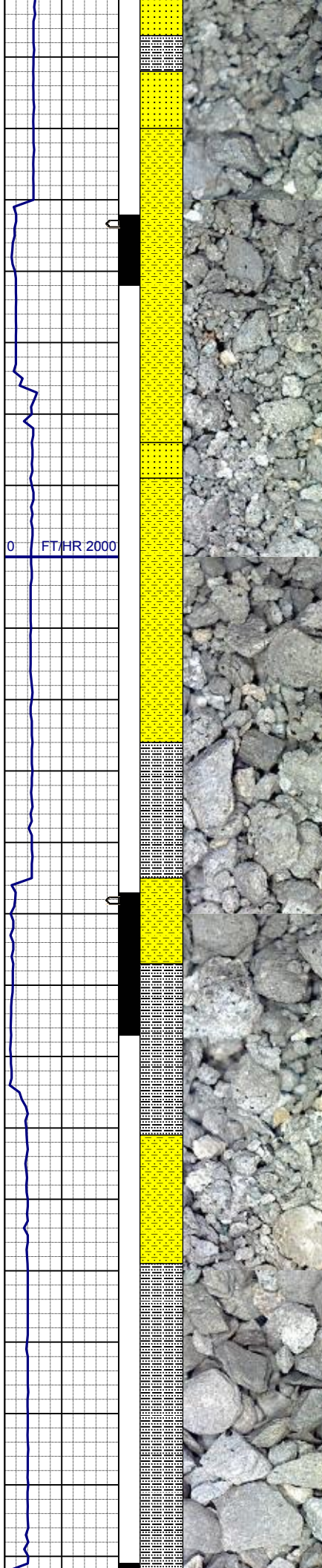
SHYSS: ltgy-gy, s&p ip, sbang, v fri, vfgr, psrt, wrndd, abnt cly, arg cmt, sl calc
SLTYSH: ltgy-gy, sbblky-sbplty, sft, gt -sly tex, arg cmt
SS: gy-wh-trnsl, sbang-ang, p ind, fgr, psrt, wrndd, arg cmt, tr lit frag, tr glau

MD 4407'
INC 12.8°
AZM 255.7°
TVD 4317.24'

WT IN 9.00/ OUT 9.00
VIS IN 30/ OUT 30

SHYSS: ltgy-gy, s&p ip, sbang, v fri, vfgr, psrt, wrndd, abnt cly, arg cmt, sl calc
SLTYSH: ltgy-gy, sbblky-sbplty, sft, gt -sly tex, arg cmt
SS: gy-wh-trnsl, sbang-ang, p ind, fgr, psrt, wrndd, arg cmt, tr lit frag, tr glau

MD 4502'
INC 10.8°
AZM 257.1°
TVD 4410.23'



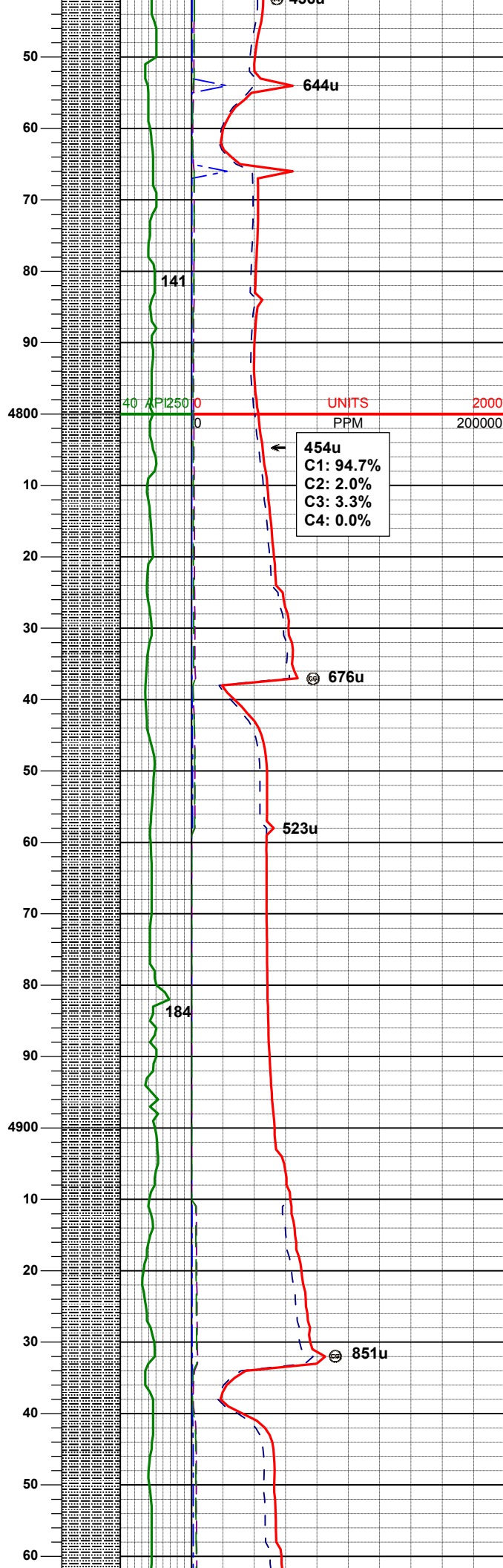
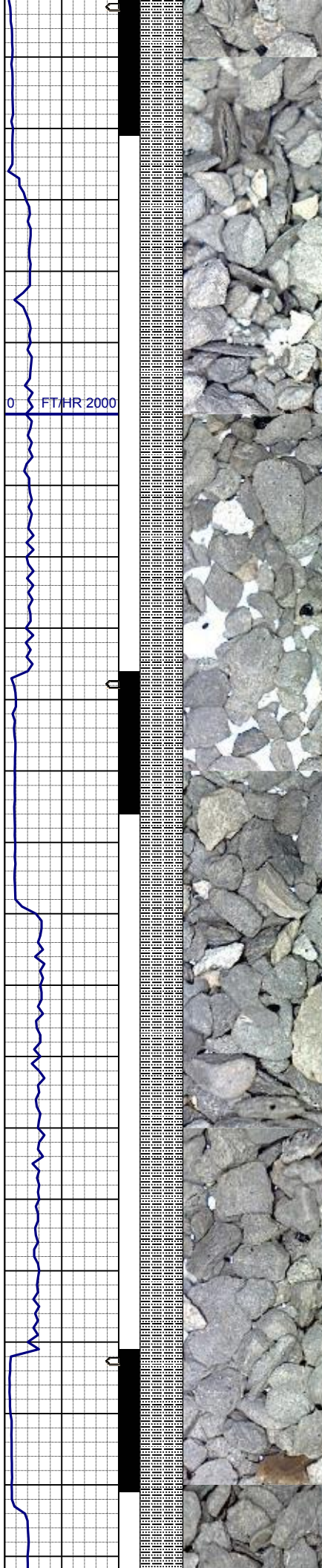
SHYSS: ltgy-gy, s&p ip, sbang, v fri, vfgr, psrt, wrnnd, abnt cly, arg cmt, sl calc
SLTYSH: ltgy-gy, sbblky-sbply, sft, gt -slty tex, arg cmt
SS: gy-wh-trnsl, sbang-ang, p ind, fgr, psrt, wrnnd, arg cmt, tr lit frag, tr glau

MD	4597'
INC	10.0°
AZM	253.2°
TVD	4503.67'

WT IN 9.20/ OUT 9.20
VIS IN 35/ OUT 35

SLTYSH: ltgy-gy, sbblky-sbply, sft, gt -slty tex, arg cmt
SHYSS: ltgy-gy, s&p ip, sbang, v fri, vfgr, psrt, wrnnd, abnt cly, arg cmt, sl calc

MD	4691'
INC	8.9°
AZM	248.8°
TVD	4596.39'



SLTYSH: ltgy-gy, sbblky-sbplty, sft, gt
-silty tex, arg cmt

WT IN 9.40/ OUT 9.40
VIS IN 35/ OUT 35

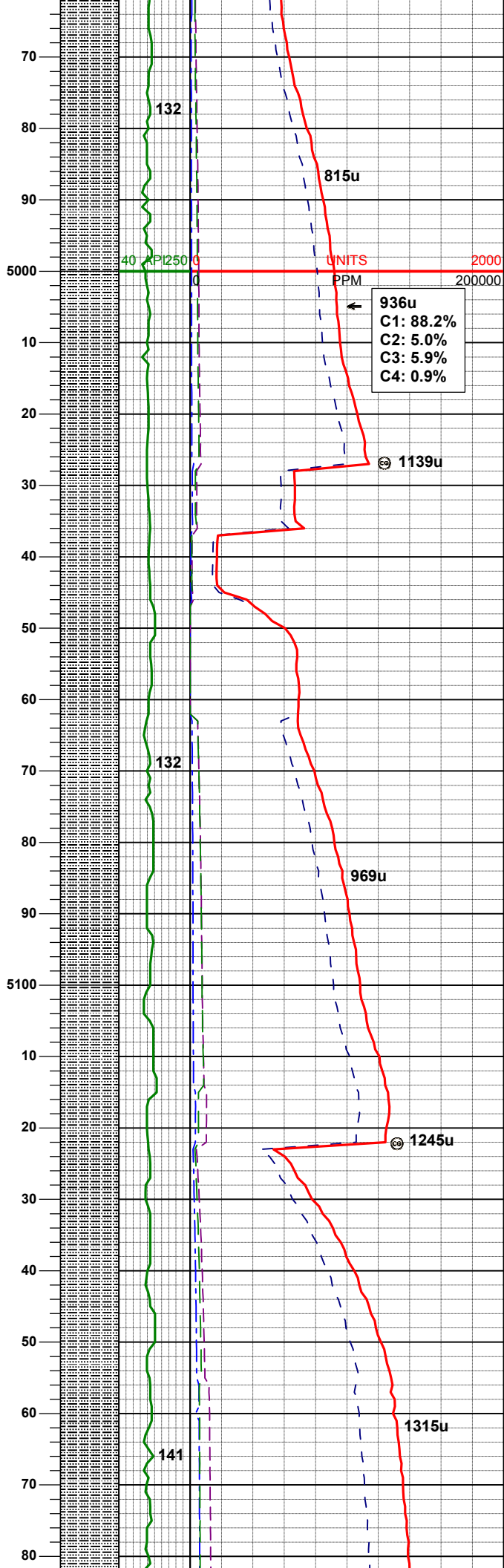
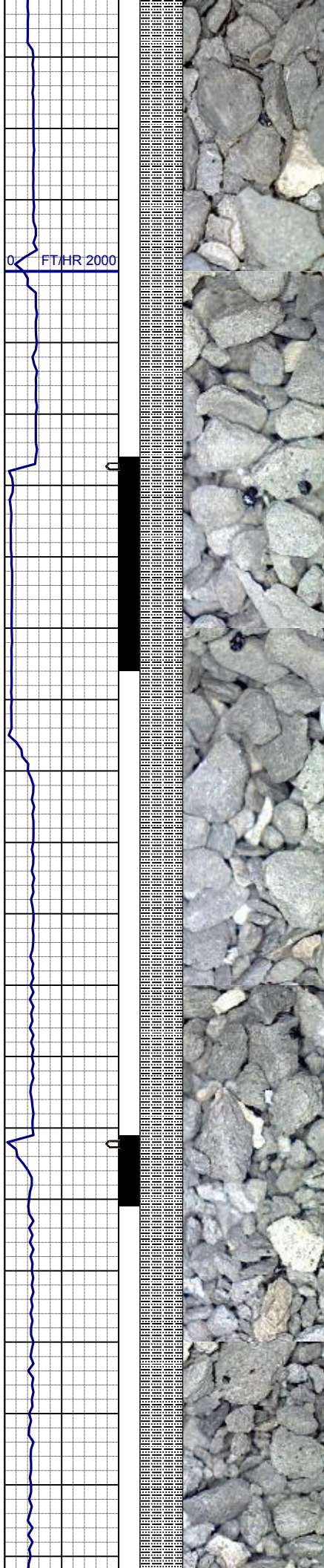
MD	4786'
INC	8.7°
AZM	253.2°
TVD	4690.27'

454u
C1: 94.7%
C2: 2.0%
C3: 3.3%
C4: 0.0%

SLTYSH: lt gy - gy, sbblky - sbplty,
mod firm, gt - slty tex, arg cmt, non
calc

MD	4881'
INC	9.0°
AZM	259.0°
TVD	4784.14'

SLTYSH: lt gy - gy, sbblky - sbplty,
mod firm, gt - slty tex, arg cmt, non
calc



MD	4976'
INC	8.8°
AZM	260.9°
TVD	4878.00'

WT IN 9.40+ OUT 9.40+
VIS IN 34/ OUT 34

SLTYSH: lt gy - gy, sbblky - sbplty,
mod firm, gt - slty tex, arg cmt, non
calc

MD	5071'
INC	9.8°
AZM	261.5°
TVD	4971.75'

WT IN 9.50/ OUT 9.50
VIS IN 34/ OUT 34

SLTYSH: lt gy - gy, sbblky - sbplty,
mod firm, gt - slty tex, arg cmt, non
calc

