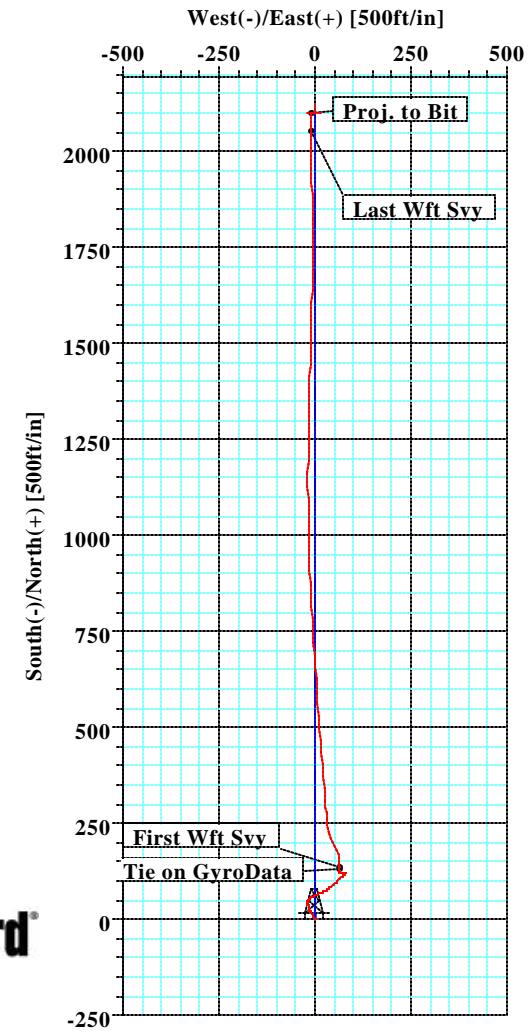
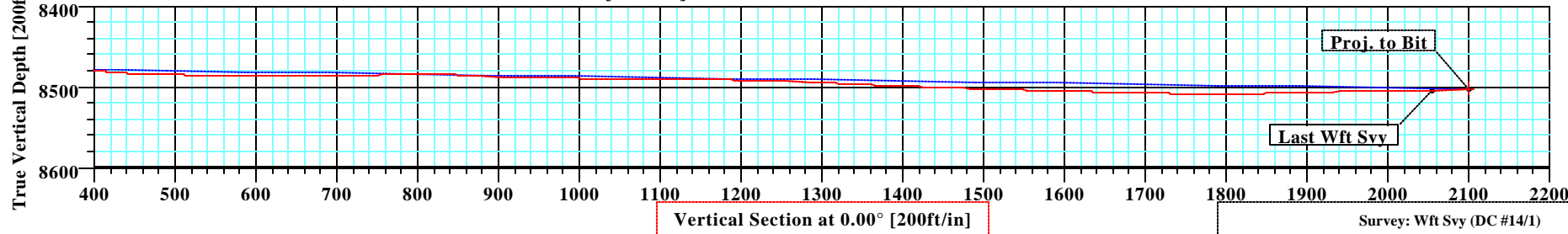
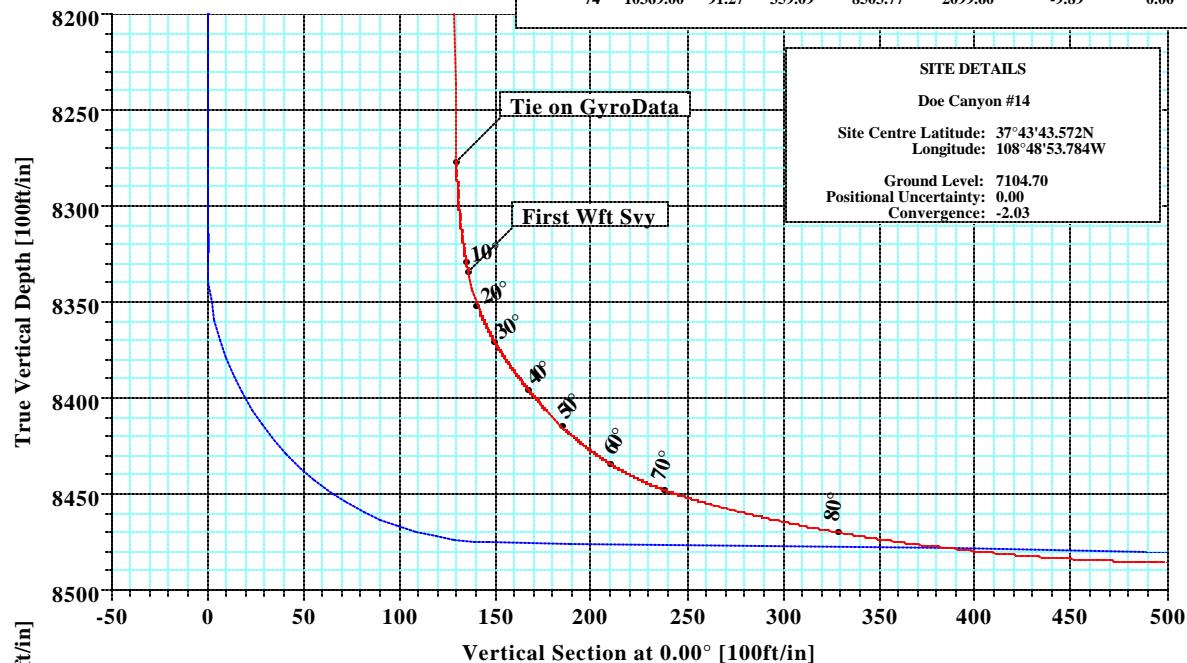


## Doe Canyon #14 Dolores Co., Colorado



KB ELEV: 7129.7  
GL ELEV: 7104.7





<b>Company:</b> Kinder Morgan	<b>Date:</b> 9/5/2013	<b>Time:</b> 07:37:48	<b>Page:</b> 1
<b>Field:</b> Dolores County, CO (NAD 83)	<b>Co-ordinate(NE) Reference:</b> Well: DC #14, True North		
<b>Site:</b> Doe Canyon #14	<b>Vertical (TVD) Reference:</b> SITE 7129.7		
<b>Well:</b> DC #14	<b>Section (VS) Reference:</b> Well (0.00N,0.00E,0.00Azi)		
<b>Wellpath:</b> 1	<b>Survey Calculation Method:</b> Minimum Curvature	<b>Db:</b> Sybase	

<b>Survey:</b> Wft Svy	<b>Start Date:</b> 8/25/2013
------------------------	------------------------------

<b>Company:</b> Weatherford International Ltd.	<b>Engineer:</b> Patrick Rudolph
<b>Tool:</b> MWD;MWD - Standard	<b>Tied-to:</b> User Defined

**Field:** Dolores County, CO (NAD 83)

USA

**Map System:** US State Plane Coordinate System 1983

**Geo Datum:** GRS 1980

**Sys Datum:** Mean Sea Level

**Map Zone:** Colorado, Southern Zone

**Coordinate System:** Well Centre

**Geomagnetic Model:** IGRF2010

**Site:** Doe Canyon #14

<b>Site Position:</b>	<b>Northing:</b> 1403744.14 ft	<b>Latitude:</b> 37 43 43.572 N
<b>From:</b> Geographic	<b>Easting:</b> 2041503.28 ft	<b>Longitude:</b> 108 48 53.784 W
<b>Position Uncertainty:</b> 0.00 ft		<b>North Reference:</b> True
<b>Ground Level:</b> 7104.70 ft		<b>Grid Convergence:</b> -2.03 deg

**Well:** DC #14

**Slot Name:**

<b>Well Position:</b> +N/-S 0.00 ft	<b>Northing:</b> 1403744.14 ft	<b>Latitude:</b> 37 43 43.572 N
+E/-W 0.00 ft	<b>Easting:</b> 2041503.28 ft	<b>Longitude:</b> 108 48 53.784 W
<b>Position Uncertainty:</b> 0.00 ft		

**Wellpath:** 1

<b>Drilled From:</b> Surface
<b>Tie-on Depth:</b> 0.00 ft
<b>Above System Datum:</b> Mean Sea Level
<b>Declination:</b> 10.20 deg
<b>Mag Dip Angle:</b> 64.05 deg
<b>Direction:</b> deg

<b>Current Datum:</b> SITE	<b>Height</b> 7129.70 ft
<b>Magnetic Data:</b> 9/1/2013	
<b>Field Strength:</b> 50985 nT	
<b>Vertical Section:</b> Depth From (TVD) ft	+N/-S ft
0.00	0.00

#### Survey

MD ft	Incl deg	Azim deg	TVD ft	N/S ft	E/W ft	VS ft	DLS deg/100ft	Lat	Min	Sec	Long	Min	Sec	Comment
8280.00	0.88	0.92	8276.80	129.89	62.79	129.89	0.00	37	43	44.856	108	48	53.002	Tie on Gyro
8338.00	10.96	355.80	8334.42	135.85	62.39	135.85	17.39	37	43	44.915	108	48	53.007	First Wft Sv
8348.00	16.10	354.40	8344.14	138.18	62.18	138.18	51.50	37	43	44.938	108	48	53.010	
8359.00	21.59	359.25	8354.54	141.73	62.01	141.73	51.86	37	43	44.973	108	48	53.012	
8368.00	25.97	359.61	8362.78	145.36	61.97	145.36	48.69	37	43	45.009	108	48	53.013	Csg
8374.00	28.89	359.79	8368.10	148.12	61.96	148.12	48.69	37	43	45.036	108	48	53.013	
8390.00	35.40	355.00	8381.64	156.61	61.54	156.61	43.67	37	43	45.120	108	48	53.018	
8405.00	39.07	345.19	8393.60	165.52	59.95	165.52	46.46	37	43	45.208	108	48	53.038	
8422.00	45.08	336.61	8406.22	176.24	56.19	176.24	48.86	37	43	45.314	108	48	53.085	
8437.00	50.99	331.00	8416.25	186.23	51.25	186.23	48.20	37	43	45.413	108	48	53.146	
8454.00	56.20	331.09	8426.34	198.20	44.63	198.20	30.65	37	43	45.531	108	48	53.229	
8469.00	59.75	339.00	8434.30	209.72	39.28	209.72	50.56	37	43	45.645	108	48	53.295	
8485.00	65.00	345.00	8441.72	223.19	34.92	223.19	46.68	37	43	45.779	108	48	53.349	
8512.00	73.19	355.24	8451.37	247.99	30.67	247.99	46.60	37	43	46.024	108	48	53.402	
8527.00	75.42	356.74	8455.43	262.39	29.66	262.39	17.71	37	43	46.166	108	48	53.415	
8544.00	76.18	356.56	8459.60	278.84	28.70	278.84	4.59	37	43	46.329	108	48	53.427	
8559.00	77.39	355.82	8463.02	293.41	27.73	293.41	9.39	37	43	46.473	108	48	53.439	
8575.00	78.71	355.58	8466.34	309.02	26.55	309.02	8.38	37	43	46.627	108	48	53.453	
8607.00	80.72	355.53	8472.05	340.41	24.11	340.41	6.28	37	43	46.937	108	48	53.484	
8639.00	83.04	355.66	8476.57	372.00	21.68	372.00	7.26	37	43	47.250	108	48	53.514	
8670.00	84.06	355.63	8480.05	402.71	19.34	402.71	3.29	37	43	47.553	108	48	53.543	
8702.00	85.92	355.09	8482.85	434.48	16.76	434.48	6.05	37	43	47.868	108	48	53.575	
8734.00	87.57	354.87	8484.66	466.31	13.96	466.31	5.20	37	43	48.182	108	48	53.610	
8765.00	89.97	355.38	8485.33	497.18	11.33	497.18	7.91	37	43	48.487	108	48	53.643	



Company: Kinder Morgan  
Field: Dolores County, CO (NAD 83)  
Site: Doe Canyon #14  
Well: DC #14  
Wellpath: 1

Date: 9/5/2013 Time: 07:37:48 Page: 2  
Co-ordinate(NE) Reference: Well: DC #14, True North  
Vertical (TVD) Reference: SITE 7129.7  
Section (VS) Reference: Well (0.00N,0.00E,0.00Azi)  
Survey Calculation Method: Minimum Curvature Db: Sybase

## Survey

MD ft	Incl deg	Azim deg	TVD ft	N/S ft	E/W ft	VS ft	DLS deg/100ft	Lat	Min	Sec	Long	Min	Sec	Comment
8797.00	88.64	355.89	8485.72	529.09	8.90	529.09	4.45	37	43	48.803	108	48	53.673	
8829.00	88.72	356.33	8486.45	561.01	6.73	561.01	1.40	37	43	49.118	108	48	53.700	
8860.00	90.07	356.46	8486.78	591.94	4.78	591.94	4.37	37	43	49.424	108	48	53.725	
8892.00	90.25	356.25	8486.69	623.88	2.74	623.88	0.86	37	43	49.740	108	48	53.750	
8923.00	90.00	356.27	8486.62	654.81	0.72	654.81	0.81	37	43	50.046	108	48	53.775	
8955.00	90.13	356.00	8486.59	686.74	-1.44	686.74	0.94	37	43	50.362	108	48	53.802	
8986.00	91.17	356.28	8486.24	717.67	-3.52	717.67	3.47	37	43	50.667	108	48	53.828	
9018.00	91.75	356.67	8485.42	749.59	-5.49	749.59	2.18	37	43	50.983	108	48	53.852	
9049.00	92.05	356.29	8484.39	780.52	-7.39	780.52	1.56	37	43	51.289	108	48	53.876	
9081.00	89.07	356.44	8484.08	812.45	-9.42	812.45	9.32	37	43	51.604	108	48	53.901	
9112.00	87.01	357.19	8485.14	843.38	-11.14	843.38	7.07	37	43	51.910	108	48	53.923	
9138.00	87.69	357.78	8486.34	869.33	-12.28	869.33	3.46	37	43	52.167	108	48	53.937	
9144.00	87.85	357.82	8486.58	875.32	-12.51	875.32	2.75	37	43	52.226	108	48	53.940	
9176.00	87.90	358.11	8487.76	907.28	-13.65	907.28	0.92	37	43	52.542	108	48	53.954	
9208.00	89.00	358.38	8488.63	939.25	-14.63	939.25	3.54	37	43	52.858	108	48	53.966	
9239.00	89.19	358.29	8489.12	970.23	-15.53	970.23	0.68	37	43	53.164	108	48	53.977	
9271.00	89.02	359.09	8489.62	1002.22	-16.26	1002.22	2.56	37	43	53.481	108	48	53.986	
9302.00	89.44	358.88	8490.03	1033.21	-16.81	1033.21	1.51	37	43	53.787	108	48	53.993	
9334.00	89.72	359.16	8490.27	1065.21	-17.36	1065.21	1.24	37	43	54.103	108	48	54.000	
9366.00	90.14	359.26	8490.31	1097.20	-17.80	1097.20	1.35	37	43	54.420	108	48	54.006	
9397.00	90.65	359.10	8490.09	1128.20	-18.24	1128.20	1.72	37	43	54.726	108	48	54.011	
9429.00	87.71	0.32	8490.55	1160.19	-18.40	1160.19	9.95	37	43	55.042	108	48	54.013	
9461.00	88.19	0.50	8491.70	1192.17	-18.17	1192.17	1.60	37	43	55.359	108	48	54.010	
9492.00	88.20	0.41	8492.67	1223.15	-17.93	1223.15	0.29	37	43	55.665	108	48	54.007	
9524.00	88.36	0.77	8493.63	1255.14	-17.60	1255.14	1.23	37	43	55.981	108	48	54.003	
9554.00	88.43	1.36	8494.47	1285.12	-17.04	1285.12	1.98	37	43	56.278	108	48	53.996	
9586.00	87.09	1.58	8495.73	1317.09	-16.22	1317.09	4.24	37	43	56.594	108	48	53.986	
9618.00	87.57	2.00	8497.22	1349.04	-15.22	1349.04	1.99	37	43	56.909	108	48	53.973	
9649.00	87.92	1.69	8498.44	1379.99	-14.23	1379.99	1.51	37	43	57.216	108	48	53.961	
9681.00	87.76	1.25	8499.64	1411.96	-13.40	1411.96	1.46	37	43	57.532	108	48	53.951	
9713.00	88.19	1.38	8500.77	1443.93	-12.67	1443.93	1.40	37	43	57.848	108	48	53.942	
9745.00	87.95	1.28	8501.85	1475.91	-11.93	1475.91	0.81	37	43	58.164	108	48	53.932	
9776.00	88.22	1.49	8502.89	1506.88	-11.18	1506.88	1.10	37	43	58.470	108	48	53.923	
9795.00	88.39	1.53	8503.45	1525.86	-10.68	1525.86	0.92	37	43	58.658	108	48	53.917	
9839.00	87.88	1.50	8504.88	1569.83	-9.52	1569.83	1.16	37	43	59.092	108	48	53.902	
9873.00	89.56	2.13	8505.64	1603.80	-8.44	1603.80	5.28	37	43	59.428	108	48	53.889	
9905.00	88.13	2.00	8506.28	1635.77	-7.29	1635.77	4.49	37	43	59.744	108	48	53.875	
9936.00	88.56	0.88	8507.18	1666.75	-6.51	1666.75	3.87	37	44	0.051	108	48	53.865	
9968.00	89.50	0.38	8507.72	1698.74	-6.16	1698.74	3.33	37	44	0.367	108	48	53.861	
9999.00	88.37	359.91	8508.30	1729.73	-6.08	1729.73	3.95	37	44	0.673	108	48	53.860	
10031.00	87.25	359.25	8509.52	1761.71	-6.31	1761.71	4.06	37	44	0.989	108	48	53.863	
10056.00	89.90	359.65	8510.14	1786.70	-6.55	1786.70	10.72	37	44	1.236	108	48	53.866	
10094.00	92.56	359.38	8509.33	1824.69	-6.87	1824.69	7.04	37	44	1.612	108	48	53.870	
10125.00	91.99	359.20	8508.10	1855.66	-7.26	1855.66	1.93	37	44	1.918	108	48	53.874	
10157.00	91.58	359.24	8507.10	1887.64	-7.69	1887.64	1.29	37	44	2.234	108	48	53.880	
10189.00	90.72	359.60	8506.46	1919.63	-8.02	1919.63	2.91	37	44	2.551	108	48	53.884	
10221.00	90.94	359.75	8505.99	1951.63	-8.20	1951.63	0.83	37	44	2.867	108	48	53.886	
10253.00	90.38	359.50	8505.63	1983.62	-8.41	1983.62	1.92	37	44	3.183	108	48	53.889	
10284.00	90.50	359.50	8505.39	2014.62	-8.68	2014.62	0.39	37	44	3.490	108	48	53.892	
10324.00	91.27	359.09	8504.77	2054.61	-9.17	2054.61	2.18	37	44	3.885	108	48	53.898	Last Wft Sys
10369.00	91.27	359.09	8503.77	2099.60	-9.89	2099.60	0.00	37	44	4.330	108	48	53.907	Proj. to Bit

<b>Company:</b> Kinder Morgan	<b>Date:</b> 9/5/2013	<b>Time:</b> 07:37:48	<b>Page:</b> 3
<b>Field:</b> Dolores County, CO (NAD 83)	<b>Co-ordinate(NE) Reference:</b> Well: DC #14, True North		
<b>Site:</b> Doe Canyon #14	<b>Vertical (TVD) Reference:</b> SITE 7129.7		
<b>Well:</b> DC #14	<b>Section (VS) Reference:</b> Well (0.00N,0.00E,0.00Azi)		
<b>Wellpath:</b> 1	<b>Survey Calculation Method:</b> Minimum Curvature	<b>Db:</b> Sybase	

## Casing Points

MD ft	TVD ft	Diameter in	Hole Size in	Name
8368.00	8362.78	0.000	0.000	Csg

## Annotation

MD ft	TVD ft	
8280.00	8276.80	Tie on GyroData
8338.00	8334.42	First Wft Svy
10324.00	8504.77	Last Wft Svy
10369.00	8503.77	Proj. to Bit

## Formations

MD	TVD	Formations	Lithology	Dip Angle	Dip Direction