

1910 Brass Cap,
1.1' High,
Pile of Stones
Lat: 40.644628°
Long: 107.468453°

T8N, R90W, 6th P.M.

S89°22'08"E
2630.55' (Meas.)

S89°11'E - 2788.50' (G.L.O)

1910 Brass Cap,
0.5' High, S-E Fence
Lat: 40.644539°
Long: 107.458978°

BULLDOG #22-41V-890
Elev. Ungraded Ground = 6352'

Target
Bottom
Hole

LOT 1

H.E. 221

D.S. 54

LOT 2

1910 Brass Cap, 1.0'
High, N-E Fence
Lat: 40.637228°
Long: 107.467858°

LOT 4

NOTE:
THE PROPOSED TARGET BOTTOM HOLE FOR
THIS WELL IS LOCATED IN LOT 1 OF SECTION
22, T8N, R90W, 6th P.M. AT 700' FNL 700'
FEL. IT BEARS S58°23'30"W 1154.98' FROM
THE PROPOSED WELL HEAD.

H.E. 508

LOT 3

LOT 5

LOT 6

LOT 7

S89°14'E - 5347.32' (G.L.O)

LINE TABLE

LINE	DIRECTION	LENGTH
L1	S58°23'30"W	1154.98'

PDOP = 1.3

NAD 83 (SURFACE LOCATION)
LATITUDE = 40°38'39.56" (40.644322)
LONGITUDE = 107°28'02.19" (107.467275)
NAD 27 (SURFACE LOCATION)
LATITUDE = 40°38'39.67" (40.644353)
LONGITUDE = 107°27'59.96" (107.466656)
STATE PLANE NAD 83
N: 1483624.56 E: 2454113.23
STATE PLANE NAD 27
N: 483623.21 E: 1454270.68

AXIA ENERGY

Well location, BULLDOG #22-41V-890 (SURFACE LOCATION), located as shown in Lot 1 of Section 23, T8N, R90W, 6th P.M., Moffat County, Colorado.

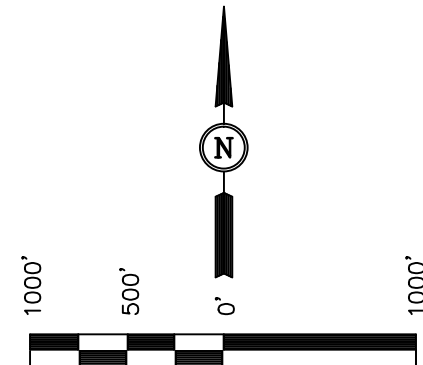
BASIS OF ELEVATION

SPOT ELEVATION LOCATED AT THE SOUTHWEST CORNER OF SECTION 15, T7N, R91W, 6th P.M. TAKEN FROM THE CRAIG QUADRANGLE, COLORADO, MOFFAT COUNTY, 7.5 MINUTE QUAD (TOPOGRAPHIC MAP) PUBLISHED BY THE UNITED STATES DEPARTMENT OF THE INTERIOR, GEOLOGICAL SURVEY. SAID ELEVATION IS MARKED AS BEING 6672 FEET.

BASIS OF BEARINGS

BASIS OF BEARINGS IS A G.P.S. OBSERVATION.

N02°42'W - 5377.02' (G.L.O)



SCALE
CERTIFICATE

THIS IS TO CERTIFY THAT THE ABOVE PLAT WAS PREPARED FROM FIELD NOTES OF ACTUAL SURVEYS MADE BY ME OR UNDER MY SUPERVISION AND THAT THE SAME ARE TRUE AND CORRECT TO THE BEST OF MY KNOWLEDGE AND BELIEF.

REGISTERED LAND SURVEYOR
REGISTRATION NO. 17492
STATE OF COLORADO

REVISED: 10-15-13

UINTAH ENGINEERING & LAND SURVEYING

85 SOUTH 200 EAST - VERNAL, UTAH 84078

(435) 789-1017

SCALE 1" = 1000'	DATE SURVEYED: 05-02-13	DATE DRAWN: 05-03-13
PARTY B.H. A.H. A.D.	REFERENCES G.L.O. PLAT	
WEATHER WARM	FILE AXIA ENERGY	

LEGEND:

└─ = 90° SYMBOL

● = PROPOSED WELL HEAD.

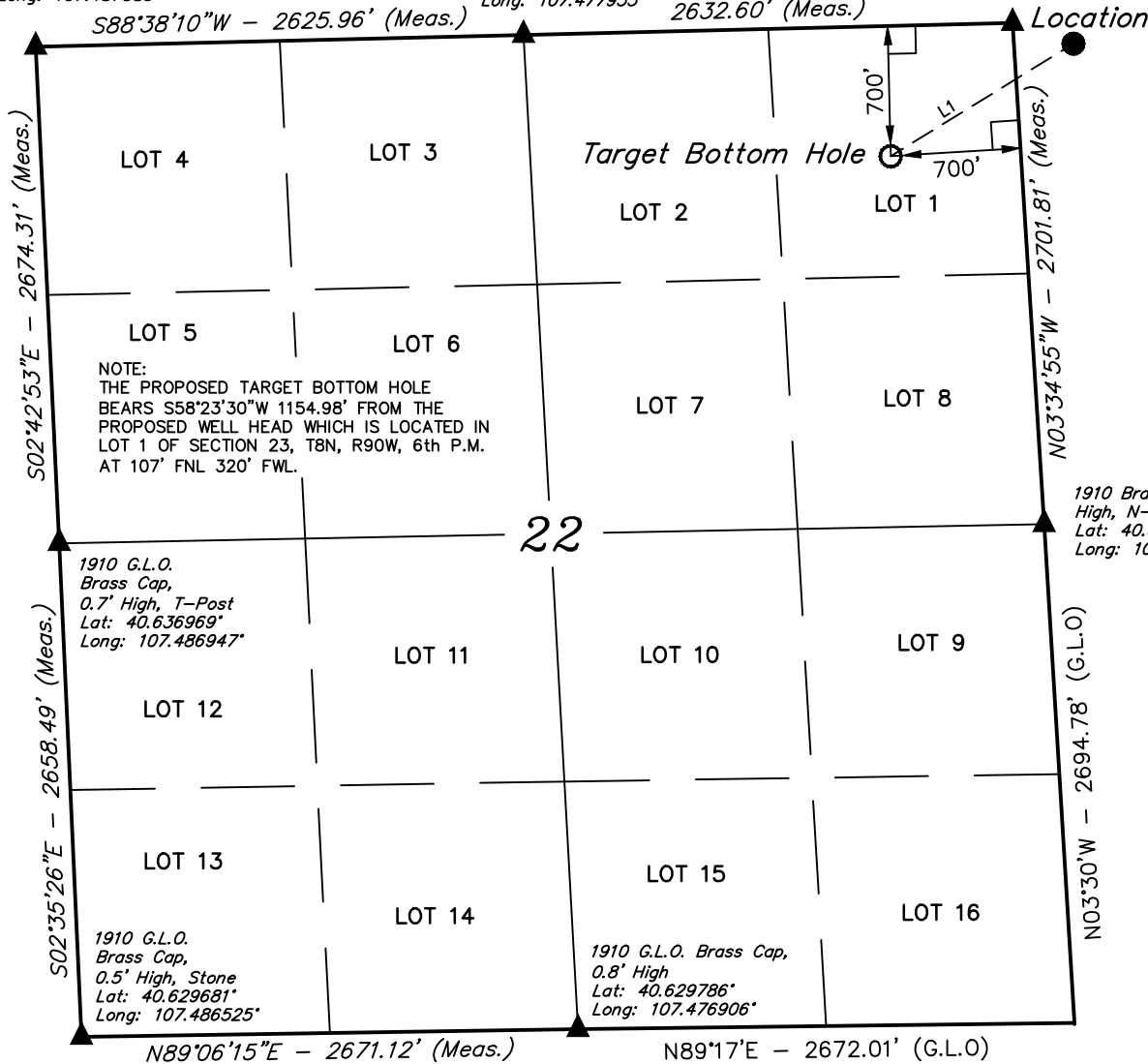
▲ = SECTION CORNERS LOCATED.

T8N, R90W, 6th P.M.

1910 G.L.O. Brass Cap,
0.1' High, T-Post
Lat: 40.644300°
Long: 107.487389°

1910 G.L.O. Brass Cap,
1.3' High, N-E Fence
Lat: 40.644461°
Long: 107.477933°

1910 Brass Cap,
1.1' High,
Pile of Stones
Lat: 40.644628°
Long: 107.468453°



AXIA ENERGY

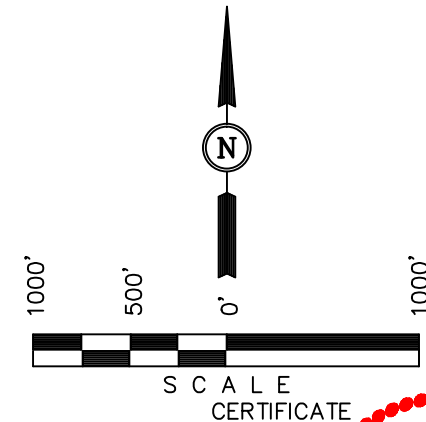
Well location, BULLDOG #22-41V-890 (TARGET
BOTTOM HOLE), located as shown in Lot 1 of
Section 22, T8N, R90W, 6th P.M., Moffat County,
Colorado.

BASIS OF ELEVATION

SPOT ELEVATION LOCATED AT THE SOUTHWEST CORNER OF
SECTION 15, T7N, R91W, 6th P.M. TAKEN FROM THE CRAIG
QUADRANGLE, COLORADO, MOFFAT COUNTY, 7.5 MINUTE QUAD
(TOPOGRAPHIC MAP) PUBLISHED BY THE UNITED STATES
DEPARTMENT OF THE INTERIOR, GEOLOGICAL SURVEY. SAID
ELEVATION IS MARKED AS BEING 6672 FEET.

BASIS OF BEARINGS

BASIS OF BEARINGS IS A G.P.S. OBSERVATION.



THIS IS TO CERTIFY THAT THE ABOVE PLAT WAS PREPARED FROM
FIELD NOTES OF ACTUAL SURVEYS MADE BY ME OR UNDER MY
SUPERVISION AND THAT THE SAME ARE TRUE AND CORRECT TO THE
BEST OF MY KNOWLEDGE AND BELIEF.

REGISTERED LAND SURVEYOR
REGISTRATION NO. 17492
STATE OF COLORADO

REVISED: 10-15-13

UINTAH ENGINEERING & LAND SURVEYING
85 SOUTH 200 EAST - VERNAL, UTAH 84078
(435) 789-1017

LEGEND:

- └─┘ = 90° SYMBOL
- = PROPOSED WELL HEAD.
- ▲ = SECTION CORNERS LOCATED.

LINE TABLE

LINE	DIRECTION	LENGTH
L1	S58°23'30"W	1154.98'

NAD 83 (TARGET BOTTOM HOLE)	
LATITUDE =	40°38'33.60" (40.642667)
LONGITUDE =	107°28'14.95" (107.470819)
NAD 27 (TARGET BOTTOM HOLE)	
LATITUDE =	40°38'33.70" (40.642694)
LONGITUDE =	107°28'12.73" (107.470203)
STATE PLANE NAD 83	
N: 1483042.91	E: 2453115.86
STATE PLANE NAD 27	
N: 483041.56	E: 1453273.31

SCALE 1" = 1000'	DATE SURVEYED: 05-02-13	DATE DRAWN: 05-03-13
PARTY B.H. A.H. A.D.	REFERENCES G.L.O. PLAT	
WEATHER WARM	FILE AXIA ENERGY	