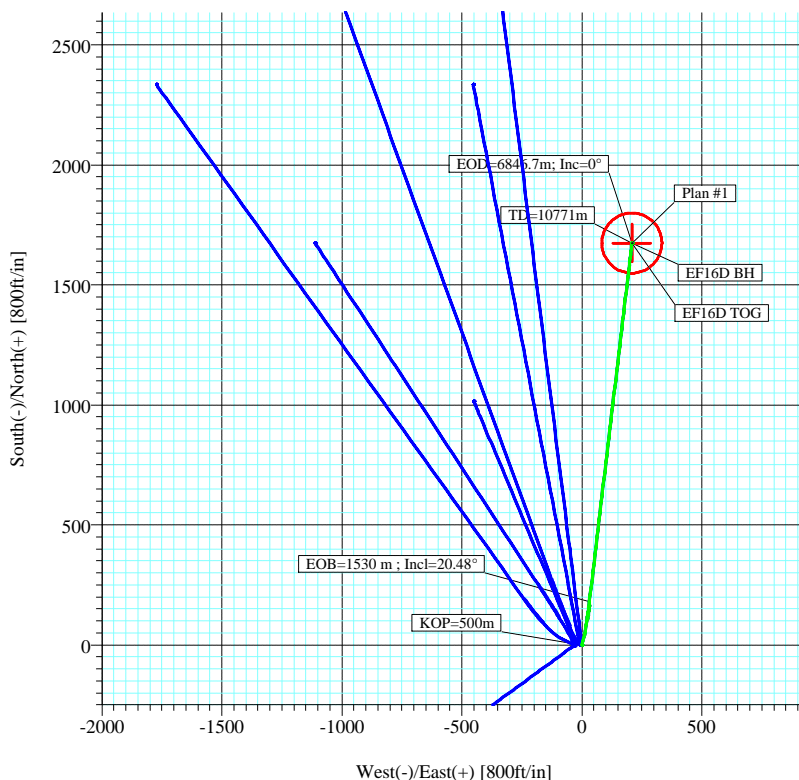
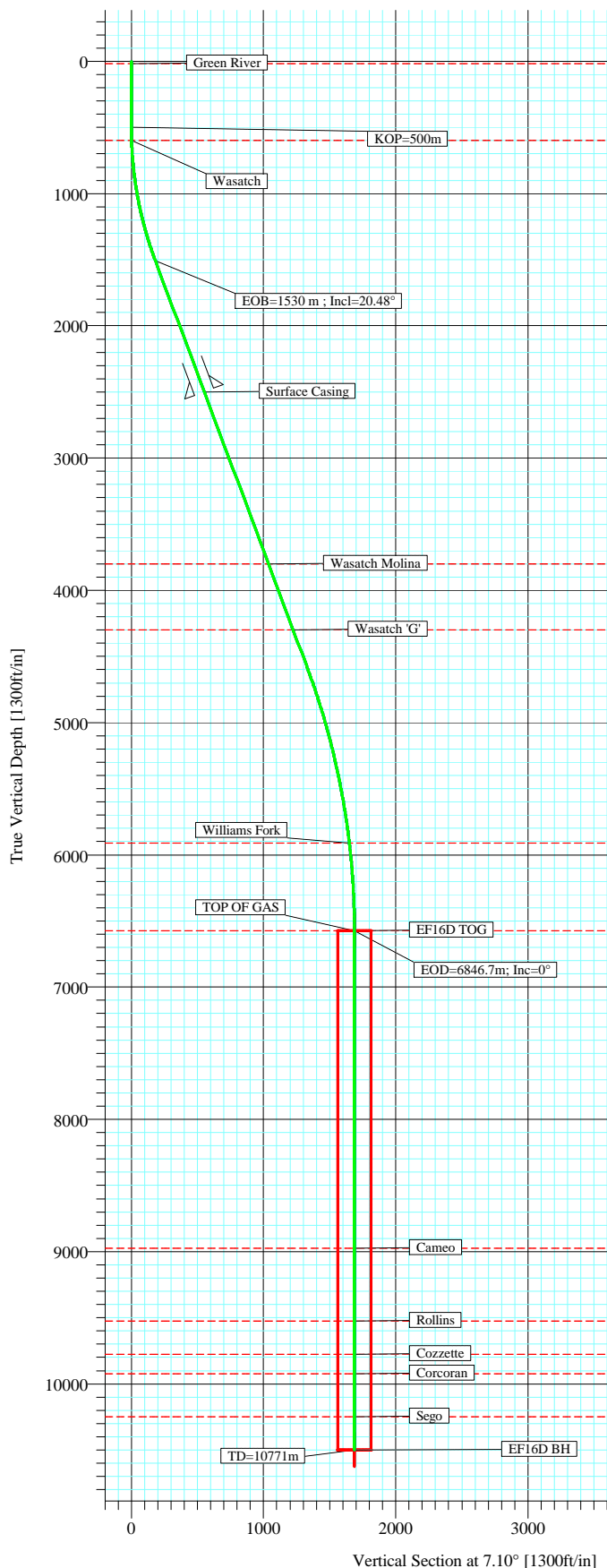




Field: Garfield
 Site: Pad H29A 595
 Well: N. Parachute EF16D H29A 595
 Wellpath: DD
 Plan: Plan #1



SECTION DETAILS										
Sec	MD	Inc	Azi	TVD	+N/-S	+E/-W	DLeg	TFace	VSec	Target
1	0.0	0.00	0.00	0.0	0.0	0.0	0.00	0.00	0.0	
2	500.0	0.00	0.00	500.0	0.0	0.0	0.00	0.00	0.0	
3	900.0	8.00	15.00	898.7	26.9	7.2	2.00	15.00	27.6	
4	1530.6	20.48	6.75	1508.8	179.5	31.6	2.00	-13.29	182.0	
5	4799.0	20.48	6.75	4570.7	1315.0	166.0	0.00	0.00	1325.5	
6	6846.7	0.00	0.00	6575.0	1674.6	208.6	1.00	180.00	1687.5	EF16D TOG
7	10771.7	0.00	0.00	10500.0	1674.6	208.6	0.00	0.00	1687.5	EF16D BH

FORMATION TOP DETAILS			
No.	TVDPath	MDPath	Formation
1	17.0	17.0	Green River
2	600.0	600.0	Wasatch
3	3800.0	3976.4	Wasatch Molina
4	4300.0	4510.1	Wasatch 'G'
5	5910.0	6180.2	Williams Fork
6	6575.0	6846.7	TOP OF GAS
7	8975.0	9246.7	Cameo
8	9525.0	9796.7	Rollins
9	9775.0	10046.7	Cozzette
10	9925.0	10196.7	Corcoran
11	10250.0	10521.7	Sego

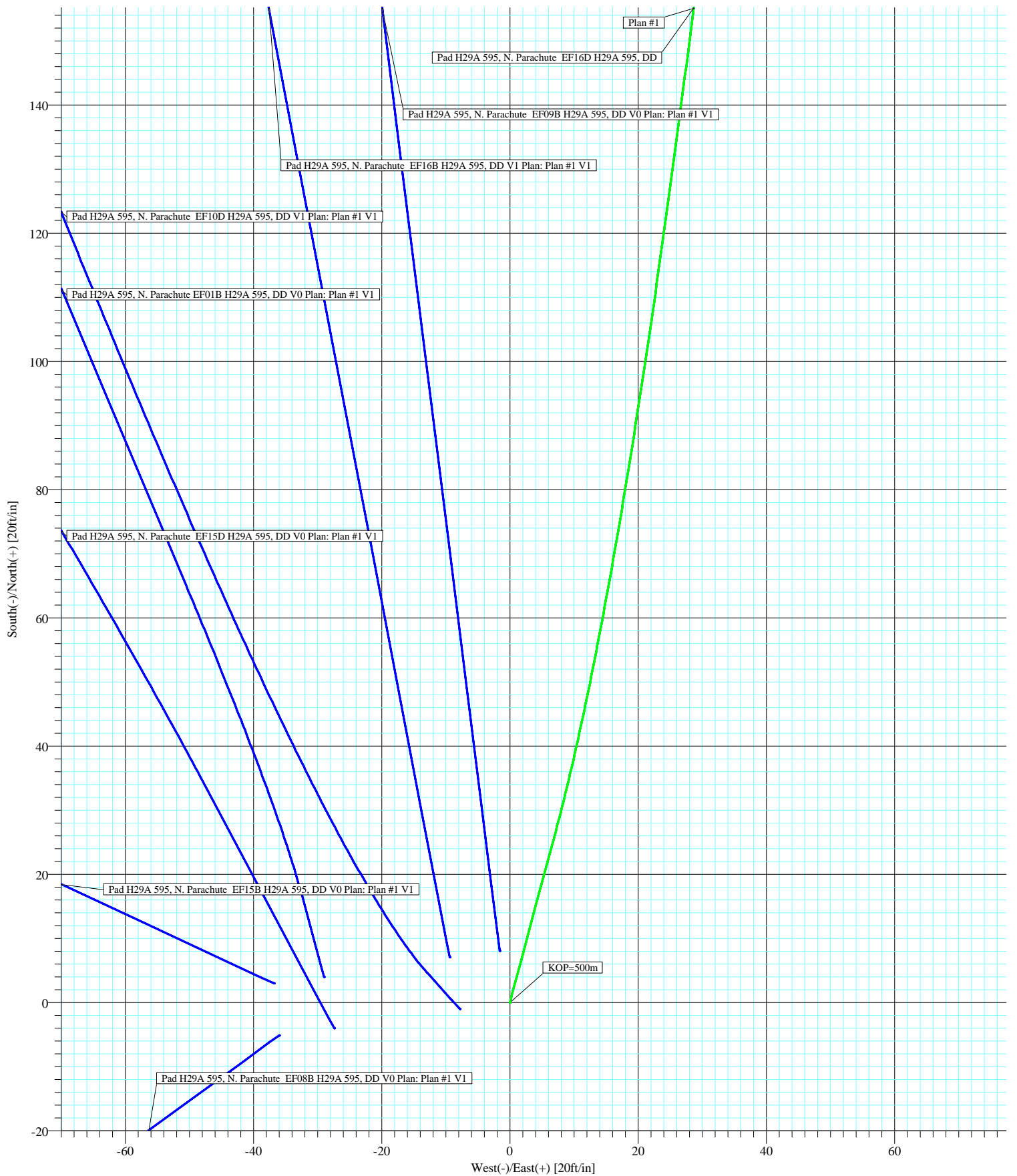


Azimuths to True North
 Magnetic North: 11.13°
 Magnetic Field
 Strength: 52931nT
 Dip Angle: 65.96°
 Date: 9/22/2005
 Model: igrf2005

WELLPATH DETAILS			
DD			
Job#xxxx ;AQ			
Rig:			
Ref. Datum:	KBE(EF16D)	6251.0ft	
V.Section	Origin	Origin	Starting
Angle	+N/-S	+E/-W	From TVD
7.10°	0.0	0.0	0.0



Field: Garfield
Site: Pad H29A 595
Well: N. Parachute EF16D H29A 595
Wellpath: DD
Plan: Plan #1



Directional Plus

Planning Report

Company: EnCana Oil & Gas (USA) Inc Field: Garfield Site: Pad H29A 595 Well: N. Parachute EF16D H29A 595 Wellpath: DD	Date: 9/27/2005 Co-ordinate(NE) Reference: Well: N. Parachute EF16D H29A 595 Vertical (TVD) Reference: KBE(EF16D) 6251.0 Section (VS) Reference: Well (0.00N,0.00E,7.10Azi) Plan: Plan #1	Time: 17:15:45 Page: 1
--	--	---

Field: Garfield	
Map System: US State Plane Coordinate System 1983 Geo Datum: GRS 1980 Sys Datum: Mean Sea Level	Map Zone: Colorado, Central Zone Coordinate System: Well Centre Geomagnetic Model: igrf2005

Site: Pad H29A 595	
Site Position: From: Geographic Position Uncertainty: 0.0 ft Ground Level: 6234.0 ft	Northing: 502750.90 m Easting: 693614.03 m Latitude: 39 35 18.140 N Longitude: 108 4 14.060 W North Reference: True Grid Convergence: -1.62 deg

Well: N. Parachute EF16D H29A 595	Slot Name:
Well Position: +N/-S 0.0 ft +E/-W 0.0 ft Position Uncertainty: 0.0 ft	Northing: 502750.90 m Easting : 693614.03 m Latitude: 39 35 18.140 N Longitude: 108 4 14.060 W

Wellpath: DD Job#xxxx ;AQ Current Datum: KBE(EF16D) Magnetic Data: 9/22/2005 Field Strength: 52931 nT Vertical Section: Depth From (TVD) ft	Height 6251.0 ft	Drilled From: Surface Tie-on Depth: 0.0 ft Above System Datum: Mean Sea Level Declination: 11.13 deg Mag Dip Angle: 65.96 deg +E/-W ft Direction deg
0.0	0.0	0.0 7.10

Plan: Plan #1 Principal: Yes	Date Composed: 9/22/2005 Version: 1 Tied-to: From Surface
---	--

Plan Section Information										
MD ft	Incl deg	Azim deg	TVD ft	+N/-S ft	+E/-W ft	DLS deg/100ft	Build deg/100ft	Turn deg/100ft	TFO deg	Target
0.0	0.00	0.00	0.0	0.0	0.0	0.00	0.00	0.00	0.00	
500.0	0.00	0.00	500.0	0.0	0.0	0.00	0.00	0.00	0.00	
900.0	8.00	15.00	898.7	26.9	7.2	2.00	2.00	0.00	15.00	
1530.6	20.48	6.75	1508.8	179.5	31.6	2.00	1.98	-1.31	-13.29	
4799.0	20.48	6.75	4570.7	1315.0	166.0	0.00	0.00	0.00	0.00	
6846.7	0.00	0.00	6575.0	1674.6	208.6	1.00	-1.00	0.00	180.00	EF16D TOG
10771.7	0.00	0.00	10500.0	1674.6	208.6	0.00	0.00	0.00	0.00	EF16D BH

Survey										
MD ft	Incl deg	Azim deg	TVD ft	+N/-S ft	+E/-W ft	VS ft	DLS deg/100ft	Build deg/100ft	Turn deg/100ft	Tool/Comment
0.0	0.00	0.00	0.0	0.0	0.0	0.0	0.00	0.00	0.00	
17.0	0.00	0.00	17.0	0.0	0.0	0.0	0.00	0.00	0.00	Green River
100.0	0.00	0.00	100.0	0.0	0.0	0.0	0.00	0.00	0.00	MWD
200.0	0.00	0.00	200.0	0.0	0.0	0.0	0.00	0.00	0.00	MWD
300.0	0.00	0.00	300.0	0.0	0.0	0.0	0.00	0.00	0.00	MWD
400.0	0.00	0.00	400.0	0.0	0.0	0.0	0.00	0.00	0.00	MWD
500.0	0.00	0.00	500.0	0.0	0.0	0.0	0.00	0.00	0.00	KOP=500m
600.0	2.00	15.00	600.0	1.7	0.5	1.7	2.00	2.00	0.00	MWD
600.0	2.00	15.00	600.0	1.7	0.5	1.7	0.00	0.00	0.00	Wasatch
700.0	4.00	15.00	699.8	6.7	1.8	6.9	2.00	2.00	0.00	MWD
800.0	6.00	15.00	799.5	15.2	4.1	15.5	2.00	2.00	0.00	MWD
900.0	8.00	15.00	898.7	26.9	7.2	27.6	2.00	2.00	0.00	MWD
1000.0	9.96	12.34	997.5	42.1	10.9	43.1	2.00	1.96	-2.66	MWD
1100.0	11.93	10.55	1095.6	60.7	14.6	62.0	2.00	1.97	-1.79	MWD
1200.0	13.91	9.26	1193.1	82.7	18.4	84.4	2.00	1.98	-1.29	MWD

Directional Plus

Planning Report

Company: EnCana Oil & Gas (USA) Inc
Field: Garfield
Site: Pad H29A 595
Well: N. Parachute EF16D H29A 595
Wellpath: DD

Date: 9/27/2005
Co-ordinate(NE) Reference: Well: N. Parachute EF16D H29A 595
Vertical (TVD) Reference: KBE(EF16D) 6251.0
Section (VS) Reference: Well (0.00N,0.00E,7.10Azi)
Plan: Plan #1

Time: 17:15:45
Page: 2

Survey

MD ft	Incl deg	Azim deg	TVD ft	+N/-S ft	+E/-W ft	VS ft	DLS deg/100ft	Build deg/100ft	Turn deg/100ft	Tool/Comment
1300.0	15.89	8.29	1289.7	108.1	22.3	110.1	2.00	1.98	-0.97	MWD
1400.0	17.88	7.53	1385.4	136.9	26.3	139.1	2.00	1.99	-0.76	MWD
1500.0	19.87	6.91	1480.0	169.0	30.4	171.5	2.00	1.99	-0.61	MWD
1530.6	20.48	6.75	1508.8	179.5	31.6	182.0	2.00	1.99	-0.54	MWD
1530.6	20.48	6.75	1508.8	179.5	31.6	182.0	0.00	0.00	0.00	EOB=1530 m ; Incl=20.48°
1600.0	20.48	6.75	1573.8	203.6	34.5	206.3	0.00	0.00	0.00	MWD
1700.0	20.48	6.75	1667.5	238.3	38.6	241.3	0.00	0.00	0.00	MWD
1800.0	20.48	6.75	1761.1	273.1	42.7	276.3	0.00	0.00	0.00	MWD
1900.0	20.48	6.75	1854.8	307.8	46.8	311.2	0.00	0.00	0.00	MWD
2000.0	20.48	6.75	1948.5	342.6	50.9	346.2	0.00	0.00	0.00	MWD
2100.0	20.48	6.75	2042.2	377.3	55.0	381.2	0.00	0.00	0.00	MWD
2200.0	20.48	6.75	2135.9	412.1	59.2	416.2	0.00	0.00	0.00	MWD
2300.0	20.48	6.75	2229.5	446.8	63.3	451.2	0.00	0.00	0.00	MWD
2400.0	20.48	6.75	2323.2	481.5	67.4	486.2	0.00	0.00	0.00	MWD
2500.0	20.48	6.75	2416.9	516.3	71.5	521.2	0.00	0.00	0.00	MWD
2600.0	20.48	6.75	2510.6	551.0	75.6	556.1	0.00	0.00	0.00	MWD
2700.0	20.48	6.75	2604.3	585.8	79.7	591.1	0.00	0.00	0.00	MWD
2800.0	20.48	6.75	2697.9	620.5	83.8	626.1	0.00	0.00	0.00	MWD
2900.0	20.48	6.75	2791.6	655.3	87.9	661.1	0.00	0.00	0.00	MWD
3000.0	20.48	6.75	2885.3	690.0	92.1	696.1	0.00	0.00	0.00	MWD
3100.0	20.48	6.75	2979.0	724.7	96.2	731.1	0.00	0.00	0.00	MWD
3200.0	20.48	6.75	3072.7	759.5	100.3	766.1	0.00	0.00	0.00	MWD
3300.0	20.48	6.75	3166.3	794.2	104.4	801.0	0.00	0.00	0.00	MWD
3400.0	20.48	6.75	3260.0	829.0	108.5	836.0	0.00	0.00	0.00	MWD
3500.0	20.48	6.75	3353.7	863.7	112.6	871.0	0.00	0.00	0.00	MWD
3600.0	20.48	6.75	3447.4	898.5	116.7	906.0	0.00	0.00	0.00	MWD
3700.0	20.48	6.75	3541.1	933.2	120.8	941.0	0.00	0.00	0.00	MWD
3800.0	20.48	6.75	3634.8	967.9	125.0	976.0	0.00	0.00	0.00	MWD
3900.0	20.48	6.75	3728.4	1002.7	129.1	1011.0	0.00	0.00	0.00	MWD
3976.4	20.48	6.75	3800.0	1029.2	132.2	1037.7	0.00	0.00	0.00	Wasatch Molina
4000.0	20.48	6.75	3822.1	1037.4	133.2	1045.9	0.00	0.00	0.00	MWD
4100.0	20.48	6.75	3915.8	1072.2	137.3	1080.9	0.00	0.00	0.00	MWD
4200.0	20.48	6.75	4009.5	1106.9	141.4	1115.9	0.00	0.00	0.00	MWD
4300.0	20.48	6.75	4103.2	1141.7	145.5	1150.9	0.00	0.00	0.00	MWD
4400.0	20.48	6.75	4196.8	1176.4	149.6	1185.9	0.00	0.00	0.00	MWD
4500.0	20.48	6.75	4290.5	1211.2	153.7	1220.9	0.00	0.00	0.00	MWD
4510.1	20.48	6.75	4300.0	1214.7	154.2	1224.4	0.00	0.00	0.00	Wasatch 'G'
4600.0	20.48	6.75	4384.2	1245.9	157.8	1255.9	0.00	0.00	0.00	MWD
4700.0	20.48	6.75	4477.9	1280.6	162.0	1290.8	0.00	0.00	0.00	MWD
4799.0	20.48	6.75	4570.7	1315.0	166.0	1325.5	0.00	0.00	0.00	MWD
4900.0	19.47	6.75	4665.5	1349.3	170.1	1360.0	1.00	-1.00	0.00	MWD
5000.0	18.47	6.75	4760.1	1381.6	173.9	1392.5	1.00	-1.00	0.00	MWD
5100.0	17.47	6.75	4855.2	1412.2	177.5	1423.3	1.00	-1.00	0.00	MWD
5200.0	16.47	6.75	4950.9	1441.2	181.0	1452.5	1.00	-1.00	0.00	MWD
5300.0	15.47	6.75	5047.0	1468.5	184.2	1480.0	1.00	-1.00	0.00	MWD
5400.0	14.47	6.75	5143.6	1494.2	187.2	1505.8	1.00	-1.00	0.00	MWD
5500.0	13.47	6.75	5240.7	1518.1	190.1	1530.0	1.00	-1.00	0.00	MWD
5600.0	12.47	6.75	5338.1	1540.4	192.7	1552.4	1.00	-1.00	0.00	MWD
5700.0	11.47	6.75	5435.9	1561.0	195.1	1573.2	1.00	-1.00	0.00	MWD
5800.0	10.47	6.75	5534.1	1579.9	197.4	1592.2	1.00	-1.00	0.00	MWD
5900.0	9.47	6.75	5632.6	1597.1	199.4	1609.5	1.00	-1.00	0.00	MWD
6000.0	8.47	6.75	5731.4	1612.6	201.2	1625.1	1.00	-1.00	0.00	MWD
6100.0	7.47	6.75	5830.4	1626.3	202.9	1638.9	1.00	-1.00	0.00	MWD

Directional Plus

Planning Report

Company: EnCana Oil & Gas (USA) Inc
Field: Garfield
Site: Pad H29A 595
Well: N. Parachute EF16D H29A 595
Wellpath: DD

Date: 9/27/2005
Co-ordinate(NE) Reference: Well: N. Parachute EF16D H29A 595
Vertical (TVD) Reference: KBE(EF16D) 6251.0
Section (VS) Reference: Well (0.00N,0.00E,7.10Azi)
Plan: Plan #1

Page: 3

Survey

MD ft	Incl deg	Azim deg	TVD ft	+N/-S ft	+E/-W ft	VS ft	DLS deg/100ft	Build deg/100ft	Turn deg/100ft	Tool/Comment
6180.2	6.67	6.75	5910.0	1636.1	204.0	1648.8	1.00	-1.00	0.00	Williams Fork
6200.0	6.47	6.75	5929.7	1638.4	204.3	1651.1	1.00	-1.00	0.00	MWD
6300.0	5.47	6.75	6029.1	1648.7	205.5	1661.5	1.00	-1.00	0.00	MWD
6400.0	4.47	6.75	6128.7	1657.3	206.5	1670.1	1.00	-1.00	0.00	MWD
6500.0	3.47	6.75	6228.5	1664.2	207.3	1677.1	1.00	-1.00	0.00	MWD
6600.0	2.47	6.75	6328.4	1669.3	208.0	1682.2	1.00	-1.00	0.00	MWD
6700.0	1.47	6.75	6428.3	1672.7	208.4	1685.7	1.00	-1.00	0.00	MWD
6800.0	0.47	6.75	6528.3	1674.4	208.6	1687.3	1.00	-1.00	0.00	MWD
6846.7	0.00	0.00	6575.0	1674.6	208.6	1687.5	1.00	-1.00	0.00	EF16D TOG
6900.0	0.00	0.00	6628.3	1674.6	208.6	1687.5	0.00	0.00	0.00	MWD
7000.0	0.00	0.00	6728.3	1674.6	208.6	1687.5	0.00	0.00	0.00	MWD
7100.0	0.00	0.00	6828.3	1674.6	208.6	1687.5	0.00	0.00	0.00	MWD
7200.0	0.00	0.00	6928.3	1674.6	208.6	1687.5	0.00	0.00	0.00	MWD
7300.0	0.00	0.00	7028.3	1674.6	208.6	1687.5	0.00	0.00	0.00	MWD
7400.0	0.00	0.00	7128.3	1674.6	208.6	1687.5	0.00	0.00	0.00	MWD
7500.0	0.00	0.00	7228.3	1674.6	208.6	1687.5	0.00	0.00	0.00	MWD
7600.0	0.00	0.00	7328.3	1674.6	208.6	1687.5	0.00	0.00	0.00	MWD
7700.0	0.00	0.00	7428.3	1674.6	208.6	1687.5	0.00	0.00	0.00	MWD
7800.0	0.00	0.00	7528.3	1674.6	208.6	1687.5	0.00	0.00	0.00	MWD
7900.0	0.00	0.00	7628.3	1674.6	208.6	1687.5	0.00	0.00	0.00	MWD
8000.0	0.00	0.00	7728.3	1674.6	208.6	1687.5	0.00	0.00	0.00	MWD
8100.0	0.00	0.00	7828.3	1674.6	208.6	1687.5	0.00	0.00	0.00	MWD
8200.0	0.00	0.00	7928.3	1674.6	208.6	1687.5	0.00	0.00	0.00	MWD
8300.0	0.00	0.00	8028.3	1674.6	208.6	1687.5	0.00	0.00	0.00	MWD
8400.0	0.00	0.00	8128.3	1674.6	208.6	1687.5	0.00	0.00	0.00	MWD
8500.0	0.00	0.00	8228.3	1674.6	208.6	1687.5	0.00	0.00	0.00	MWD
8600.0	0.00	0.00	8328.3	1674.6	208.6	1687.5	0.00	0.00	0.00	MWD
8700.0	0.00	0.00	8428.3	1674.6	208.6	1687.5	0.00	0.00	0.00	MWD
8800.0	0.00	0.00	8528.3	1674.6	208.6	1687.5	0.00	0.00	0.00	MWD
8900.0	0.00	0.00	8628.3	1674.6	208.6	1687.5	0.00	0.00	0.00	MWD
9000.0	0.00	0.00	8728.3	1674.6	208.6	1687.5	0.00	0.00	0.00	MWD
9100.0	0.00	0.00	8828.3	1674.6	208.6	1687.5	0.00	0.00	0.00	MWD
9200.0	0.00	0.00	8928.3	1674.6	208.6	1687.5	0.00	0.00	0.00	MWD
9246.7	0.00	0.00	8975.0	1674.6	208.6	1687.5	0.00	0.00	0.00	Cameo
9300.0	0.00	0.00	9028.3	1674.6	208.6	1687.5	0.00	0.00	0.00	MWD
9400.0	0.00	0.00	9128.3	1674.6	208.6	1687.5	0.00	0.00	0.00	MWD
9500.0	0.00	0.00	9228.3	1674.6	208.6	1687.5	0.00	0.00	0.00	MWD
9600.0	0.00	0.00	9328.3	1674.6	208.6	1687.5	0.00	0.00	0.00	MWD
9700.0	0.00	0.00	9428.3	1674.6	208.6	1687.5	0.00	0.00	0.00	MWD
9796.7	0.00	0.00	9525.0	1674.6	208.6	1687.5	0.00	0.00	0.00	Rollins
9800.0	0.00	0.00	9528.3	1674.6	208.6	1687.5	0.00	0.00	0.00	MWD
9900.0	0.00	0.00	9628.3	1674.6	208.6	1687.5	0.00	0.00	0.00	MWD
10000.0	0.00	0.00	9728.3	1674.6	208.6	1687.5	0.00	0.00	0.00	MWD
10046.7	0.00	0.00	9775.0	1674.6	208.6	1687.5	0.00	0.00	0.00	Cozzette
10100.0	0.00	0.00	9828.3	1674.6	208.6	1687.5	0.00	0.00	0.00	MWD
10196.7	0.00	0.00	9925.0	1674.6	208.6	1687.5	0.00	0.00	0.00	Corcoran
10200.0	0.00	0.00	9928.3	1674.6	208.6	1687.5	0.00	0.00	0.00	MWD
10300.0	0.00	0.00	10028.3	1674.6	208.6	1687.5	0.00	0.00	0.00	MWD
10400.0	0.00	0.00	10128.3	1674.6	208.6	1687.5	0.00	0.00	0.00	MWD
10500.0	0.00	0.00	10228.3	1674.6	208.6	1687.5	0.00	0.00	0.00	MWD
10521.7	0.00	0.00	10250.0	1674.6	208.6	1687.5	0.00	0.00	0.00	Sego
10600.0	0.00	0.00	10328.3	1674.6	208.6	1687.5	0.00	0.00	0.00	MWD
10700.0	0.00	0.00	10428.3	1674.6	208.6	1687.5	0.00	0.00	0.00	MWD

Directional Plus

Planning Report

Company: EnCana Oil & Gas (USA) Inc	Date: 9/27/2005	Time: 17:15:45	Page: 4
Field: Garfield	Co-ordinate(NE) Reference: Well: N. Parachute EF16D H29A 595		
Site: Pad H29A 595	Vertical (TVD) Reference: KBE(EF16D) 6251.0		
Well: N. Parachute EF16D H29A 595	Section (VS) Reference: Well (0.00N,0.00E,7.10Azi)		
Wellpath: DD	Plan: Plan #1		

Survey

MD ft	Incl deg	Azim deg	TVD ft	+N/-S ft	+E/-W ft	VS ft	DLS deg/100ft	Build deg/100ft	Turn deg/100ft	Tool/Comment
10771.7	0.00	0.00	10500.0	1674.6	208.6	1687.5	0.00	0.00	0.00	EF16D BH

Targets

Name	Description Dip.	Dir.	TVD ft	+N/-S ft	+E/-W ft	Map Northing m	Map Easting m	<--- Latitude ---> Deg Min Sec			<--- Longitude ---> Deg Min Sec		
EF16D TOG			6575.0	1674.6	208.6	503259.32	693692.02	39	35	34.691 N	108	4	11.395 W
-Plan hit target													
EF16D BH			10500.0	1674.6	208.6	503259.32	693692.02	39	35	34.691 N	108	4	11.395 W
-Circle (Radius: 125)													
-Plan hit target													

Formations

MD ft	TVD ft	Formations	Lithology	Dip Angle deg	Dip Direction deg
17.0	17.0	Green River		0.00	0.00
600.0	600.0	Wasatch		0.00	0.00
3976.4	3800.0	Wasatch Molina		0.00	0.00
4510.1	4300.0	Wasatch 'G'		0.00	0.00
6180.2	5910.0	Williams Fork		0.00	0.00
6846.7	6575.0	TOP OF GAS		0.00	0.00
9246.7	8975.0	Cameo		0.00	0.00
9796.7	9525.0	Rollins		0.00	0.00
10046.7	9775.0	Cozzette		0.00	0.00
10196.7	9925.0	Corcoran		0.00	0.00
10521.7	10250.0	Sego		0.00	0.00

Annotation

MD ft	TVD ft	
500.0	500.0	KOP=500m
1530.6	1508.8	EOB=1530 m ; Incl=20.48°
6846.7	6575.0	EOD=6846.7m; Inc=0°
10771.7	10500.0	TD=10771m

Directional Plus

Anticollision Report

Company: EnCana Oil & Gas (USA) Inc	Date: 9/27/2005	Time: 17:16:45	Page: 1
Field: Garfield			
Reference Site: Pad H29A 595	Co-ordinate(NE) Reference:	Well: N. Parachute EF16D H29A 595	
Reference Well: N. Parachute EF16D H29A 595	Vertical (TVD) Reference:	KBE(EF16D) 6251.0	
Reference Wellpath: DD	Db: Sybase		

NO GLOBAL SCAN: Using user defined selection & scan criteria

Interpolation Method: MD **Interval:** 50.0 ft

Depth Range: 0.0 to 10771.7 ft

Maximum Radius: 200.0 ft

Reference: Plan: Plan #1
Error Model: Systematic Ellipse
Scan Method: Closest Approach 3D
Error Surface: Ellipse

Plan: Plan #1

Date Composed: 9/22/2005

Principal: Yes

Version: 1
Tied-to: From Surface

Summary

<----- Offset Wellpath ----->			Reference	Offset	Ctr-Ctr	Edge	Separation	Warning
Site	Well	Wellpath	MD ft	MD ft	Distance ft	Distance ft	Factor	
Pad H29A 595	N. Parachute	EF08BDD V0 Plan: Plan #1 V1	750.0	751.7	41.8	39.3	16.24	
Pad H29A 595	N. Parachute	EF09BDD V0 Plan: Plan #1 V1	600.0	599.5	9.3	7.3	4.58	
Pad H29A 595	N. Parachute	EF10DDD V1 Plan: Plan #1 V1	550.0	550.9	8.4	6.6	4.52	
Pad H29A 595	N. Parachute	EF15BDD V0 Plan: Plan #1 V1	650.0	649.0	43.2	41.0	19.53	
Pad H29A 595	N. Parachute	EF15DDD V0 Plan: Plan #1 V1	700.0	701.2	32.8	30.4	13.65	
Pad H29A 595	N. Parachute	EF16BDD V1 Plan: Plan #1 V1	700.0	701.8	11.2	8.8	4.68	
Pad H29A 595	N. Parachute	EF01BDD V0 Plan: Plan #1 V1	850.0	850.5	39.3	36.3	12.94	

Site: Pad H29A 595

Well: N. Parachute EF08B H29A 595

Wellpath: DD V0 Plan: Plan #1 V1

Inter-Site Error: 0.0 ft

Reference		Offset		Semi-Major Axis			Offset Location		Ctr-Ctr	Edge	Separation	Warning
MD ft	TVD ft	MD ft	TVD ft	Ref ft	Offset ft	TFO-HS deg	North ft	East ft	Distance ft	Distance ft	Factor	
0.0	0.0	2.0	2.0	0.0	0.0	261.94	-5.1	-36.0	36.4	36.4	12859.53	
50.0	50.0	52.0	52.0	0.1	0.1	261.94	-5.1	-36.0	36.4	36.2	277.32	
100.0	100.0	102.0	102.0	0.1	0.1	261.94	-5.1	-36.0	36.4	36.1	125.50	
150.0	150.0	152.0	152.0	0.2	0.2	261.94	-5.1	-36.0	36.4	35.9	78.32	
200.0	200.0	202.0	202.0	0.3	0.3	261.94	-5.1	-36.0	36.4	35.7	56.92	
250.0	250.0	252.0	252.0	0.4	0.4	261.94	-5.1	-36.0	36.4	35.5	44.70	
300.0	300.0	302.0	302.0	0.5	0.5	261.94	-5.1	-36.0	36.4	35.4	36.81	
350.0	350.0	352.0	352.0	0.6	0.6	261.94	-5.1	-36.0	36.4	35.2	31.28	
400.0	400.0	402.0	402.0	0.7	0.7	261.94	-5.1	-36.0	36.4	35.0	27.20	
450.0	450.0	452.0	452.0	0.8	0.8	261.94	-5.1	-36.0	36.4	34.8	24.06	
500.0	500.0	502.0	502.0	0.8	0.8	261.94	-5.1	-36.0	36.4	34.7	21.57	
550.0	550.0	552.0	552.0	0.9	0.9	246.31	-5.1	-36.0	36.5	34.7	19.63	
600.0	600.0	602.0	602.0	1.0	1.0	244.47	-5.1	-36.0	37.1	35.0	18.21	
650.0	649.9	651.9	651.9	1.1	1.1	241.52	-5.1	-36.0	38.1	35.9	17.18	
700.0	699.8	701.8	701.8	1.2	1.2	237.67	-5.1	-36.0	39.6	37.2	16.55	
750.0	749.7	751.7	751.7	1.3	1.3	233.17	-5.1	-36.0	41.8	39.3	16.24	
800.0	799.5	801.5	801.5	1.4	1.4	228.33	-5.1	-36.0	44.9	42.1	16.28	
850.0	849.1	851.1	851.1	1.5	1.5	223.44	-5.1	-36.0	48.8	45.9	16.59	
900.0	898.7	900.7	900.7	1.7	1.5	218.73	-5.1	-36.0	53.8	50.7	17.22	
950.0	948.2	950.2	950.2	1.8	1.6	215.78	-5.1	-36.0	59.7	56.4	18.05	
1000.0	997.5	999.5	999.5	1.9	1.7	212.85	-5.1	-36.0	66.5	63.0	19.09	
1050.0	1046.6	1047.4	1047.4	2.1	1.8	210.23	-5.3	-36.3	74.7	71.0	20.39	
1100.0	1095.6	1095.0	1095.0	2.3	1.9	208.00	-6.0	-37.3	84.6	80.7	22.05	
1150.0	1144.5	1142.0	1142.0	2.5	2.0	206.19	-7.2	-38.8	96.1	92.1	23.96	
1200.0	1193.1	1188.5	1188.4	2.7	2.0	204.75	-8.8	-41.0	109.3	105.1	26.12	
1250.0	1241.5	1234.4	1234.2	2.9	2.1	203.65	-10.7	-43.7	124.0	119.7	28.43	
1300.0	1289.7	1279.7	1279.3	3.1	2.2	202.81	-13.1	-47.0	140.3	135.7	30.91	
1350.0	1337.7	1326.5	1325.9	3.4	2.3	202.08	-15.8	-50.7	157.6	152.9	33.37	
1400.0	1385.4	1373.0	1372.1	3.6	2.4	201.42	-18.5	-54.3	175.7	170.8	35.82	
1450.0	1432.9	1419.2	1418.1	3.9	2.5	200.83	-21.1	-58.0	194.7	189.6	38.22	

Directional Plus

Anticollision Report

Company: EnCana Oil & Gas (USA) Inc	Date: 9/27/2005	Time: 17:16:45	Page: 2
Field: Garfield			
Reference Site: Pad H29A 595	Co-ordinate(NE) Reference:	Well: N. Parachute EF16D H29A 595	
Reference Well: N. Parachute EF16D H29A 595	Vertical (TVD) Reference:	KBE(EF16D) 6251.0	
Reference Wellpath: DD	Db: Sybase		

Site: Pad H29A 595
Well: N. Parachute EF09B H29A 595
Wellpath: DD V0 Plan: Plan #1 V1

Inter-Site Error: 0.0 ft

Reference		Offset		Semi-Major Axis			Offset Location		Ctr-Ctr	Edge	Separation	Warning
MD	TVD	MD	TVD	Ref	Offset	TFO-HS	North	East	Distance	Distance	Factor	
ft	ft	ft	ft	ft	ft	deg	ft	ft	ft	ft		
0.0	0.0	0.0	0.0	0.0	0.0	348.83	8.1	-1.6	8.3			No Data
50.0	50.0	50.0	50.0	0.1	0.1	348.83	8.1	-1.6	8.3	8.1	63.50	
100.0	100.0	100.0	100.0	0.1	0.1	348.83	8.1	-1.6	8.3	8.0	28.50	
150.0	150.0	150.0	150.0	0.2	0.2	348.83	8.1	-1.6	8.3	7.8	17.78	
200.0	200.0	200.0	200.0	0.3	0.3	348.83	8.1	-1.6	8.3	7.6	12.93	
250.0	250.0	250.0	250.0	0.4	0.4	348.83	8.1	-1.6	8.3	7.4	10.15	
300.0	300.0	300.0	300.0	0.5	0.5	348.83	8.1	-1.6	8.3	7.3	8.36	
350.0	350.0	350.0	350.0	0.6	0.6	348.83	8.1	-1.6	8.3	7.1	7.10	
400.0	400.0	400.0	400.0	0.7	0.7	348.83	8.1	-1.6	8.3	6.9	6.18	
450.0	450.0	450.0	450.0	0.8	0.8	348.83	8.1	-1.6	8.3	6.7	5.46	
500.0	500.0	500.0	500.0	0.8	0.8	348.83	8.1	-1.6	8.3	6.6	4.90	
550.0	550.0	549.8	549.8	0.9	0.9	332.85	8.7	-1.7	8.5	6.7	4.58	
600.0	600.0	599.5	599.5	1.0	1.0	330.25	10.7	-1.9	9.3	7.3	4.58	
650.0	649.9	649.3	649.1	1.1	1.1	326.80	13.9	-2.3	10.7	8.5	4.83	
700.0	699.8	698.9	698.6	1.2	1.2	323.23	18.4	-2.9	12.6	10.2	5.28	
750.0	749.7	748.5	747.8	1.3	1.3	320.02	24.1	-3.6	15.1	12.6	5.90	
800.0	799.5	798.0	796.8	1.4	1.5	317.33	31.1	-4.5	18.3	15.5	6.63	
850.0	849.1	847.4	845.5	1.5	1.6	315.16	39.4	-5.5	22.0	19.1	7.44	
900.0	898.7	896.6	893.8	1.7	1.8	313.43	48.8	-6.7	26.4	23.2	8.32	
950.0	948.2	945.7	941.7	1.8	2.0	313.66	59.5	-8.0	31.3	27.9	9.19	
1000.0	997.5	994.6	989.1	1.9	2.2	314.06	71.3	-9.5	36.6	32.9	10.06	
1050.0	1046.6	1043.4	1036.1	2.1	2.4	314.57	84.3	-11.1	42.3	38.4	10.87	
1100.0	1095.6	1092.0	1082.6	2.3	2.6	315.14	98.4	-12.9	48.4	44.3	11.68	
1150.0	1144.5	1140.4	1128.5	2.5	2.9	315.74	113.7	-14.7	55.0	50.6	12.42	
1200.0	1193.1	1188.6	1173.8	2.7	3.2	316.35	130.0	-16.8	62.0	57.3	13.16	
1250.0	1241.5	1236.6	1218.5	2.9	3.5	316.95	147.3	-18.9	69.4	64.4	13.83	
1300.0	1289.7	1284.4	1262.5	3.1	3.8	317.55	165.7	-21.2	77.2	71.8	14.49	
1350.0	1337.7	1331.9	1305.9	3.4	4.2	318.13	185.1	-23.6	85.3	79.7	15.09	
1400.0	1385.4	1379.2	1348.5	3.6	4.5	318.68	205.4	-26.2	93.9	87.9	15.68	
1450.0	1432.9	1426.3	1390.4	3.9	4.9	319.22	226.7	-28.8	102.8	96.5	16.22	
1500.0	1480.0	1473.1	1431.5	4.2	5.3	319.74	248.8	-31.6	112.1	105.4	16.75	
1550.0	1526.9	1519.6	1471.8	4.5	5.7	320.12	271.8	-34.4	121.8	114.7	17.26	
1600.0	1573.8	1565.7	1511.3	4.8	6.2	320.45	295.6	-37.4	132.4	125.0	17.86	
1650.0	1620.6	1611.4	1549.7	5.1	6.6	320.92	320.0	-40.5	144.1	136.4	18.59	
1700.0	1667.5	1656.5	1587.1	5.4	7.0	321.50	345.1	-43.6	156.9	148.8	19.41	
1750.0	1714.3	1701.1	1623.5	5.7	7.5	322.15	370.7	-46.8	170.6	162.2	20.35	
1800.0	1761.1	1745.1	1658.7	6.0	8.0	322.84	396.8	-50.0	185.4	176.8	21.37	

Site: Pad H29A 595
Well: N. Parachute EF10D H29A 595
Wellpath: DD V1 Plan: Plan #1 V1

Inter-Site Error: 0.0 ft

Reference		Offset		Semi-Major Axis			Offset Location		Ctr-Ctr	Edge	Separation	Warning
MD	TVD	MD	TVD	Ref	Offset	TFO-HS	North	East	Distance	Distance	Factor	
ft	ft	ft	ft	ft	ft	deg	ft	ft	ft	ft		
0.0	0.0	1.0	1.0	0.0	0.0	262.69	-1.0	-7.8	7.9	7.9	5494.69	
50.0	50.0	51.0	51.0	0.1	0.1	262.69	-1.0	-7.8	7.9	7.7	60.22	
100.0	100.0	101.0	101.0	0.1	0.1	262.69	-1.0	-7.8	7.9	7.6	27.14	
150.0	150.0	151.0	151.0	0.2	0.2	262.69	-1.0	-7.8	7.9	7.4	16.94	
200.0	200.0	201.0	201.0	0.3	0.3	262.69	-1.0	-7.8	7.9	7.2	12.31	
250.0	250.0	251.0	251.0	0.4	0.4	262.69	-1.0	-7.8	7.9	7.1	9.67	
300.0	300.0	301.0	301.0	0.5	0.5	262.69	-1.0	-7.8	7.9	6.9	7.96	
350.0	350.0	351.0	351.0	0.6	0.6	262.69	-1.0	-7.8	7.9	6.7	6.77	

Directional Plus

Anticollision Report

Company: EnCana Oil & Gas (USA) Inc	Date: 9/27/2005	Time: 17:16:45	Page: 3
Field: Garfield			
Reference Site: Pad H29A 595	Co-ordinate(NE) Reference:	Well: N. Parachute EF16D H29A 595	
Reference Well: N. Parachute EF16D H29A 595	Vertical (TVD) Reference:	KBE(EF16D) 6251.0	
Reference Wellpath: DD	Db: Sybase		

Site: Pad H29A 595
Well: N. Parachute EF10D H29A 595
Wellpath: DD V1 Plan: Plan #1 V1

Inter-Site Error: 0.0 ft

Reference		Offset		Semi-Major Axis			Offset Location		Ctr-Ctr	Edge	Separation	Warning
MD	TVD	MD	TVD	Ref	Offset	TFO-HS	North	East	Distance	Distance	Factor	
ft	ft	ft	ft	ft	ft	deg	ft	ft	ft	ft		
400.0	400.0	401.0	401.0	0.7	0.7	262.69	-1.0	-7.8	7.9	6.5	5.88	
450.0	450.0	451.0	451.0	0.8	0.8	262.69	-1.0	-7.8	7.9	6.4	5.20	
500.0	500.0	501.0	501.0	0.8	0.8	262.70	-1.0	-7.8	7.9	6.2	4.66	
550.0	550.0	550.9	550.9	0.9	0.9	248.76	-0.5	-8.3	8.4	6.6	4.52	
600.0	600.0	600.7	600.7	1.0	1.0	251.00	1.0	-9.6	10.1	8.0	4.93	
650.0	649.9	650.4	650.3	1.1	1.1	253.41	3.4	-11.8	12.8	10.6	5.76	
700.0	699.8	700.1	699.8	1.2	1.2	255.66	6.8	-14.7	16.5	14.1	6.86	
750.0	749.7	749.8	749.1	1.3	1.3	258.12	11.5	-18.0	20.9	18.3	7.99	
800.0	799.5	799.3	798.1	1.4	1.5	260.53	17.4	-21.7	26.0	23.1	9.17	
850.0	849.1	848.7	846.8	1.5	1.6	262.78	24.5	-25.7	31.6	28.6	10.29	
900.0	898.7	897.9	895.1	1.7	1.8	264.83	32.7	-30.1	38.0	34.7	11.45	
950.0	948.2	946.9	943.0	1.8	2.0	268.14	42.1	-34.7	44.9	41.3	12.45	
1000.0	997.5	995.8	990.5	1.9	2.1	270.99	52.7	-39.7	52.3	48.4	13.44	
1050.0	1046.6	1044.4	1037.4	2.1	2.4	273.48	64.3	-45.1	60.2	56.0	14.24	
1100.0	1095.6	1092.9	1083.8	2.3	2.6	275.69	77.1	-50.7	68.5	64.0	15.02	
1150.0	1144.5	1141.1	1129.6	2.5	2.9	277.67	90.9	-56.6	77.3	72.4	15.65	
1200.0	1193.1	1189.1	1174.8	2.7	3.1	279.45	105.7	-62.8	86.6	81.3	16.26	
1250.0	1241.5	1236.8	1219.4	2.9	3.5	281.08	121.5	-69.2	96.3	90.5	16.75	
1300.0	1289.7	1284.3	1263.2	3.1	3.8	282.57	138.4	-76.0	106.5	100.3	17.23	
1350.0	1337.7	1331.5	1306.4	3.4	4.1	283.93	156.1	-83.0	117.1	110.4	17.61	
1400.0	1385.4	1378.4	1348.9	3.6	4.5	285.20	174.8	-90.2	128.2	121.0	17.99	
1450.0	1432.9	1425.1	1390.6	3.9	4.8	286.38	194.3	-97.7	139.6	132.0	18.29	
1500.0	1480.0	1471.4	1431.5	4.2	5.2	287.48	214.7	-105.3	151.6	143.4	18.58	
1550.0	1526.9	1517.5	1471.6	4.5	5.6	288.35	235.9	-113.2	163.9	155.2	18.86	
1600.0	1573.8	1563.1	1510.8	4.8	6.1	289.07	257.8	-121.3	177.0	167.7	19.18	
1650.0	1620.6	1608.3	1549.0	5.1	6.5	289.96	280.4	-129.5	190.8	181.0	19.58	

Site: Pad H29A 595
Well: N. Parachute EF15B H29A 595
Wellpath: DD V0 Plan: Plan #1 V1

Inter-Site Error: 0.0 ft

Reference		Offset		Semi-Major Axis			Offset Location		Ctr-Ctr	Edge	Separation	Warning
MD	TVD	MD	TVD	Ref	Offset	TFO-HS	North	East	Distance	Distance	Factor	
ft	ft	ft	ft	ft	ft	deg	ft	ft	ft	ft		
0.0	0.0	2.0	2.0	0.0	0.0	274.66	3.0	-36.8	36.9	36.9	13058.51	
50.0	50.0	52.0	52.0	0.1	0.1	274.66	3.0	-36.8	36.9	36.8	281.61	
100.0	100.0	102.0	102.0	0.1	0.1	274.66	3.0	-36.8	36.9	36.6	127.44	
150.0	150.0	152.0	152.0	0.2	0.2	274.66	3.0	-36.8	36.9	36.5	79.53	
200.0	200.0	202.0	202.0	0.3	0.3	274.66	3.0	-36.8	36.9	36.3	57.80	
250.0	250.0	252.0	252.0	0.4	0.4	274.66	3.0	-36.8	36.9	36.1	45.40	
300.0	300.0	302.0	302.0	0.5	0.5	274.66	3.0	-36.8	36.9	35.9	37.38	
350.0	350.0	352.0	352.0	0.6	0.6	274.66	3.0	-36.8	36.9	35.8	31.76	
400.0	400.0	402.0	402.0	0.7	0.7	274.66	3.0	-36.8	36.9	35.6	27.62	
450.0	450.0	452.0	452.0	0.8	0.8	274.66	3.0	-36.8	36.9	35.4	24.43	
500.0	500.0	502.0	502.0	0.8	0.8	274.66	3.0	-36.8	36.9	35.2	21.90	
550.0	550.0	551.1	551.1	0.9	0.9	259.39	3.3	-37.4	37.7	35.8	20.25	
600.0	600.0	600.1	600.0	1.0	1.0	258.60	4.1	-39.2	39.7	37.7	19.55	
650.0	649.9	649.0	648.8	1.1	1.1	257.44	5.5	-42.1	43.2	41.0	19.53	
700.0	699.8	697.7	697.3	1.2	1.2	256.09	7.3	-46.1	48.1	45.7	20.10	
750.0	749.7	746.1	745.4	1.3	1.3	254.73	9.7	-51.1	54.3	51.8	21.02	
800.0	799.5	794.2	793.0	1.4	1.5	253.45	12.6	-57.3	62.0	59.2	22.30	
850.0	849.1	841.8	840.0	1.5	1.6	252.32	15.9	-64.5	71.0	68.0	23.70	
900.0	898.7	889.1	886.4	1.7	1.8	251.35	19.7	-72.6	81.4	78.2	25.31	

Directional Plus

Anticollision Report

Company: EnCana Oil & Gas (USA) Inc	Date: 9/27/2005	Time: 17:16:45	Page: 4
Field: Garfield			
Reference Site: Pad H29A 595	Co-ordinate(NE) Reference:	Well: N. Parachute EF16D H29A 595	
Reference Well: N. Parachute EF16D H29A 595	Vertical (TVD) Reference:	KBE(EF16D) 6251.0	
Reference Wellpath: DD	Db: Sybase		

Site: Pad H29A 595
Well: N. Parachute EF15B H29A 595
Wellpath: DD V0 Plan: Plan #1 V1

Inter-Site Error: 0.0 ft

Reference		Offset		Semi-Major Axis			Offset Location		Ctr-Ctr	Edge	Separation	Warning
MD	TVD	MD	TVD	Ref	Offset	TFO-HS	North	East	Distance	Distance	Factor	
ft	ft	ft	ft	ft	ft	deg	ft	ft	ft	ft		
950.0	948.2	936.9	933.1	1.8	1.9	252.08	24.2	-81.7	92.8	89.4	26.72	
1000.0	997.5	984.8	979.8	1.9	2.1	252.90	29.8	-91.2	104.7	101.0	27.98	
1050.0	1046.6	1032.6	1026.0	2.1	2.3	253.80	36.6	-101.1	117.0	112.9	28.87	
1100.0	1095.6	1080.3	1071.9	2.3	2.6	254.75	44.4	-111.4	129.6	125.2	29.65	
1150.0	1144.5	1127.8	1117.3	2.5	2.8	255.73	53.2	-121.9	142.6	137.9	30.11	
1200.0	1193.1	1175.1	1162.3	2.7	3.1	256.72	63.2	-132.8	156.0	150.9	30.48	
1250.0	1241.5	1222.2	1206.7	2.9	3.3	257.72	74.1	-144.0	169.8	164.2	30.62	
1300.0	1289.7	1269.1	1250.6	3.1	3.6	258.72	86.0	-155.5	183.9	177.9	30.71	
1350.0	1337.7	1315.8	1293.9	3.4	3.9	259.72	98.9	-167.3	198.4	191.9	30.63	

Site: Pad H29A 595
Well: N. Parachute EF15D H29A 595
Wellpath: DD V0 Plan: Plan #1 V1

Inter-Site Error: 0.0 ft

Reference		Offset		Semi-Major Axis			Offset Location		Ctr-Ctr	Edge	Separation	Warning
MD	TVD	MD	TVD	Ref	Offset	TFO-HS	North	East	Distance	Distance	Factor	
ft	ft	ft	ft	ft	ft	deg	ft	ft	ft	ft		
0.0	0.0	2.0	2.0	0.0	0.0	261.69	-4.0	-27.4	27.7	27.7	9793.49	
50.0	50.0	52.0	52.0	0.1	0.1	261.69	-4.0	-27.4	27.7	27.6	211.20	
100.0	100.0	102.0	102.0	0.1	0.1	261.69	-4.0	-27.4	27.7	27.4	95.57	
150.0	150.0	152.0	152.0	0.2	0.2	261.69	-4.0	-27.4	27.7	27.2	59.64	
200.0	200.0	202.0	202.0	0.3	0.3	261.69	-4.0	-27.4	27.7	27.1	43.35	
250.0	250.0	252.0	252.0	0.4	0.4	261.69	-4.0	-27.4	27.7	26.9	34.05	
300.0	300.0	302.0	302.0	0.5	0.5	261.69	-4.0	-27.4	27.7	26.7	28.03	
350.0	350.0	352.0	352.0	0.6	0.6	261.69	-4.0	-27.4	27.7	26.5	23.82	
400.0	400.0	402.0	402.0	0.7	0.7	261.69	-4.0	-27.4	27.7	26.4	20.71	
450.0	450.0	452.0	452.0	0.8	0.8	261.69	-4.0	-27.4	27.7	26.2	18.32	
500.0	500.0	502.0	502.0	0.8	0.8	261.70	-4.0	-27.4	27.7	26.0	16.42	
550.0	550.0	551.8	551.8	0.9	0.9	246.79	-3.6	-27.6	28.0	26.2	15.05	
600.0	600.0	601.7	601.6	1.0	1.0	246.92	-2.4	-28.2	29.0	27.0	14.23	
650.0	649.9	651.4	651.4	1.1	1.1	247.08	-0.5	-29.3	30.6	28.4	13.77	
700.0	699.8	701.2	701.0	1.2	1.2	247.25	2.2	-30.7	32.8	30.4	13.65	
750.0	749.7	750.9	750.6	1.3	1.3	247.44	5.7	-32.6	35.7	33.1	13.68	
800.0	799.5	800.6	800.0	1.4	1.4	247.62	9.9	-34.8	39.2	36.4	13.95	
850.0	849.1	850.1	849.3	1.5	1.5	247.80	14.9	-37.4	43.4	40.3	14.24	
900.0	898.7	899.6	898.3	1.7	1.7	247.97	20.6	-40.5	48.2	44.9	14.69	
950.0	948.2	949.1	947.2	1.8	1.8	249.56	27.0	-43.9	53.5	49.9	15.06	
1000.0	997.5	998.4	995.9	1.9	1.9	250.81	34.2	-47.7	59.2	55.4	15.49	
1050.0	1046.6	1047.5	1044.2	2.1	2.1	251.79	42.0	-51.9	65.4	61.3	15.81	
1100.0	1095.6	1096.5	1092.2	2.3	2.3	252.54	50.5	-56.6	72.2	67.7	16.20	
1150.0	1144.5	1145.3	1139.9	2.5	2.5	253.13	59.6	-61.8	79.5	74.6	16.48	
1200.0	1193.1	1194.0	1187.3	2.7	2.6	253.59	69.4	-67.5	87.3	82.1	16.82	
1250.0	1241.5	1242.6	1234.3	2.9	2.9	253.96	79.7	-73.6	95.6	90.0	17.06	
1300.0	1289.7	1291.0	1281.0	3.1	3.1	254.26	90.7	-80.1	104.5	98.5	17.34	
1350.0	1337.7	1339.3	1327.4	3.4	3.3	254.50	102.3	-87.1	113.9	107.4	17.52	
1400.0	1385.4	1387.4	1373.3	3.6	3.6	254.71	114.4	-94.6	123.8	116.8	17.75	
1450.0	1432.9	1435.3	1418.9	3.9	3.8	254.88	127.1	-102.4	134.2	126.7	17.89	
1500.0	1480.0	1483.1	1464.0	4.2	4.1	255.04	140.4	-110.7	145.1	137.1	18.07	
1550.0	1526.9	1530.7	1508.7	4.5	4.4	255.01	154.3	-119.4	156.5	147.9	18.22	
1600.0	1573.8	1578.1	1552.9	4.8	4.7	254.93	168.6	-128.5	168.3	159.1	18.37	
1650.0	1620.6	1625.4	1596.8	5.1	5.0	255.09	183.5	-138.0	180.4	170.7	18.52	
1700.0	1667.5	1672.4	1640.1	5.4	5.4	255.45	199.0	-147.9	192.9	182.6	18.66	

Directional Plus

Anticollision Report

Company: EnCana Oil & Gas (USA) Inc	Date: 9/27/2005	Time: 17:16:45	Page: 5
Field: Garfield			
Reference Site: Pad H29A 595	Co-ordinate(NE) Reference:	Well: N. Parachute EF16D H29A 595	
Reference Well: N. Parachute EF16D H29A 595	Vertical (TVD) Reference:	KBE(EF16D) 6251.0	
Reference Wellpath: DD	Db: Sybase		

Site: Pad H29A 595
Well: N. Parachute EF16B H29A 595
Wellpath: DD V1 Plan: Plan #1 V1

Inter-Site Error: 0.0 ft

Reference		Offset		Semi-Major Axis			Offset Location		Ctr-Ctr	Edge	Separation	Warning
MD	TVD	MD	TVD	Ref	Offset	TFO-HS	North	East	Distance	Distance	Factor	
ft	ft	ft	ft	ft	ft	deg	ft	ft	ft	ft		
0.0	0.0	2.0	2.0	0.0	0.0	307.06	7.1	-9.4	11.8	11.8	4166.35	
50.0	50.0	52.0	52.0	0.1	0.1	307.06	7.1	-9.4	11.8	11.6	89.85	
100.0	100.0	102.0	102.0	0.1	0.1	307.06	7.1	-9.4	11.8	11.5	40.66	
150.0	150.0	152.0	152.0	0.2	0.2	307.06	7.1	-9.4	11.8	11.3	25.37	
200.0	200.0	202.0	202.0	0.3	0.3	307.06	7.1	-9.4	11.8	11.1	18.44	
250.0	250.0	252.0	252.0	0.4	0.4	307.06	7.1	-9.4	11.8	11.0	14.48	
300.0	300.0	302.0	302.0	0.5	0.5	307.06	7.1	-9.4	11.8	10.8	11.92	
350.0	350.0	352.0	352.0	0.6	0.6	307.06	7.1	-9.4	11.8	10.6	10.13	
400.0	400.0	402.0	402.0	0.7	0.7	307.06	7.1	-9.4	11.8	10.4	8.81	
450.0	450.0	452.0	452.0	0.8	0.8	307.06	7.1	-9.4	11.8	10.3	7.79	
500.0	500.0	502.0	502.0	0.8	0.8	307.06	7.1	-9.4	11.8	10.1	6.99	
550.0	550.0	552.0	552.0	0.9	0.9	290.07	7.1	-9.4	11.6	9.8	6.24	
600.0	600.0	602.0	602.0	1.0	1.0	283.78	7.1	-9.4	11.2	9.2	5.52	
650.0	649.9	651.9	651.9	1.1	1.1	272.61	7.1	-9.4	10.9	8.7	4.93	
700.0	699.8	701.8	701.8	1.2	1.2	256.87	7.1	-9.4	11.2	8.8	4.68	
750.0	749.7	751.7	751.7	1.3	1.3	239.42	7.1	-9.4	12.7	10.1	4.92	
800.0	799.5	801.5	801.5	1.4	1.4	224.25	7.1	-9.4	15.7	12.9	5.70	
850.0	849.1	851.1	851.1	1.5	1.5	213.01	7.1	-9.4	20.1	17.2	6.88	
900.0	898.7	900.7	900.7	1.7	1.5	205.18	7.1	-9.4	25.9	22.8	8.35	
950.0	948.2	950.2	950.2	1.8	1.6	201.04	7.1	-9.4	32.7	29.4	10.00	
1000.0	997.5	999.5	999.5	1.9	1.7	197.99	7.1	-9.4	40.4	37.0	11.76	
1050.0	1046.6	1048.6	1048.6	2.1	1.8	195.67	7.1	-9.4	49.1	45.5	13.62	
1100.0	1095.6	1097.6	1097.6	2.3	1.9	193.86	7.1	-9.4	58.7	55.0	15.55	
1150.0	1144.5	1146.5	1146.5	2.5	2.0	192.43	7.1	-9.4	69.2	65.3	17.54	
1200.0	1193.1	1195.1	1195.1	2.7	2.1	191.26	7.1	-9.4	80.6	76.5	19.58	
1250.0	1241.5	1243.5	1243.5	2.9	2.1	190.31	7.1	-9.4	92.8	88.5	21.67	
1300.0	1289.7	1291.7	1291.7	3.1	2.2	189.51	7.1	-9.4	105.9	101.5	23.79	
1350.0	1337.7	1339.7	1339.7	3.4	2.3	188.83	7.1	-9.4	119.8	115.2	25.95	
1400.0	1385.4	1387.4	1387.4	3.6	2.4	188.25	7.1	-9.4	134.6	129.9	28.14	
1450.0	1432.9	1437.5	1437.5	3.9	2.5	187.77	7.5	-9.5	150.0	145.0	30.26	
1500.0	1480.0	1489.1	1489.0	4.2	2.6	187.53	9.1	-9.8	165.0	159.9	32.17	
1550.0	1526.9	1541.1	1541.0	4.5	2.7	187.36	12.2	-10.4	179.6	174.3	33.85	
1600.0	1573.8	1593.9	1593.6	4.8	2.8	187.22	16.8	-11.2	193.2	187.7	35.20	

Site: Pad H29A 595
Well: N. Parachute EF01B H29A 595
Wellpath: DD V0 Plan: Plan #1 V1

Inter-Site Error: 0.0 ft

Reference		Offset		Semi-Major Axis			Offset Location		Ctr-Ctr	Edge	Separation	Warning
MD	TVD	MD	TVD	Ref	Offset	TFO-HS	North	East	Distance	Distance	Factor	
ft	ft	ft	ft	ft	ft	deg	ft	ft	ft	ft		
0.0	0.0	2.0	2.0	0.0	0.0	277.85	4.0	-29.0	29.3	29.3	10353.76	
50.0	50.0	52.0	52.0	0.1	0.1	277.85	4.0	-29.0	29.3	29.1	223.28	
100.0	100.0	102.0	102.0	0.1	0.1	277.85	4.0	-29.0	29.3	29.0	101.04	
150.0	150.0	152.0	152.0	0.2	0.2	277.85	4.0	-29.0	29.3	28.8	63.06	
200.0	200.0	202.0	202.0	0.3	0.3	277.85	4.0	-29.0	29.3	28.6	45.83	
250.0	250.0	252.0	252.0	0.4	0.4	277.85	4.0	-29.0	29.3	28.5	35.99	
300.0	300.0	302.0	302.0	0.5	0.5	277.85	4.0	-29.0	29.3	28.3	29.63	
350.0	350.0	352.0	352.0	0.6	0.6	277.85	4.0	-29.0	29.3	28.1	25.18	
400.0	400.0	402.0	402.0	0.7	0.7	277.85	4.0	-29.0	29.3	27.9	21.90	
450.0	450.0	452.0	452.0	0.8	0.8	277.85	4.0	-29.0	29.3	27.8	19.37	
500.0	500.0	502.0	502.0	0.8	0.8	277.85	4.0	-29.0	29.3	27.6	17.36	
550.0	550.0	551.8	551.8	0.9	0.9	262.72	4.4	-29.1	29.5	27.6	15.84	

Directional Plus

Anticollision Report

Company: EnCana Oil & Gas (USA) Inc	Date: 9/27/2005	Time: 17:16:45	Page: 6
Field: Garfield			
Reference Site: Pad H29A 595	Co-ordinate(NE) Reference:	Well: N. Parachute EF16D H29A 595	
Reference Well: N. Parachute EF16D H29A 595	Vertical (TVD) Reference:	KBE(EF16D) 6251.0	
Reference Wellpath: DD	Db: Sybase		

Site: Pad H29A 595
Well: N. Parachute EF01B H29A 595
Wellpath: DD V0 Plan: Plan #1 V1

Inter-Site Error: 0.0 ft

Reference		Offset		Semi-Major Axis			Offset Location		Ctr-Ctr	Edge	Separation	Warning
MD	TVD	MD	TVD	Ref	Offset	TFO-HS	North	East	Distance	Distance	Factor	
ft	ft	ft	ft	ft	ft	deg	ft	ft	ft	ft		
600.0	600.0	601.7	601.6	1.0	1.0	262.22	5.5	-29.4	30.1	28.0	14.76	
650.0	649.9	651.5	651.4	1.1	1.1	261.40	7.2	-29.9	31.1	28.9	13.99	
700.0	699.8	701.3	701.2	1.2	1.2	260.32	9.7	-30.5	32.5	30.1	13.50	
750.0	749.7	751.1	750.9	1.3	1.3	259.05	12.9	-31.4	34.3	31.7	13.15	
800.0	799.5	800.9	800.5	1.4	1.4	257.66	16.7	-32.4	36.5	33.7	13.00	
850.0	849.1	850.5	849.8	1.5	1.5	256.27	21.3	-33.7	39.3	36.3	12.94	
900.0	898.7	900.0	899.1	1.7	1.6	254.97	26.6	-35.5	42.7	39.4	13.09	
950.0	948.2	949.5	948.1	1.8	1.8	255.25	32.6	-37.6	46.7	43.2	13.23	
1000.0	997.5	998.9	997.0	1.9	1.9	255.34	39.4	-40.1	51.1	47.3	13.48	
1050.0	1046.6	1048.3	1045.7	2.1	2.0	255.32	46.9	-43.1	56.0	51.9	13.65	
1100.0	1095.6	1097.6	1094.2	2.3	2.2	255.25	55.2	-46.4	61.3	56.9	13.90	
1150.0	1144.5	1146.8	1142.5	2.5	2.4	255.15	64.1	-50.1	67.1	62.3	14.09	
1200.0	1193.1	1196.3	1190.9	2.7	2.5	254.84	73.7	-54.1	73.2	68.1	14.31	
1250.0	1241.5	1245.9	1239.4	2.9	2.7	254.00	83.2	-58.1	79.5	74.0	14.44	
1300.0	1289.7	1295.4	1287.8	3.1	2.9	252.74	92.7	-62.1	86.0	80.1	14.60	
1350.0	1337.7	1344.8	1336.1	3.4	3.1	251.16	102.3	-66.1	92.7	86.4	14.72	
1400.0	1385.4	1394.2	1384.4	3.6	3.3	249.34	111.8	-70.1	99.7	93.0	14.89	
1450.0	1432.9	1443.4	1432.5	3.9	3.4	247.35	121.2	-74.1	107.2	100.1	15.06	
1500.0	1480.0	1492.5	1480.6	4.2	3.6	245.24	130.7	-78.1	115.1	107.5	15.30	
1550.0	1526.9	1541.6	1528.5	4.5	3.8	242.94	140.1	-82.1	123.4	115.5	15.58	
1600.0	1573.8	1590.5	1576.4	4.8	4.0	240.65	149.6	-86.1	132.1	123.8	15.90	
1650.0	1620.6	1639.5	1624.3	5.1	4.2	238.64	159.0	-90.0	140.9	132.2	16.21	
1700.0	1667.5	1688.5	1672.2	5.4	4.4	236.86	168.4	-94.0	149.9	140.9	16.53	
1750.0	1714.3	1737.5	1720.1	5.7	4.6	235.29	177.9	-98.0	159.0	149.6	16.83	
1800.0	1761.1	1786.5	1768.0	6.0	4.8	233.89	187.3	-101.9	168.3	158.4	17.13	
1850.0	1808.0	1835.5	1815.9	6.3	5.0	232.63	196.7	-105.9	177.6	167.4	17.42	
1900.0	1854.8	1884.4	1863.9	6.6	5.1	231.50	206.2	-109.9	186.9	176.4	17.70	
1950.0	1901.7	1933.4	1911.8	6.9	5.3	230.47	215.6	-113.9	196.4	185.4	17.97	