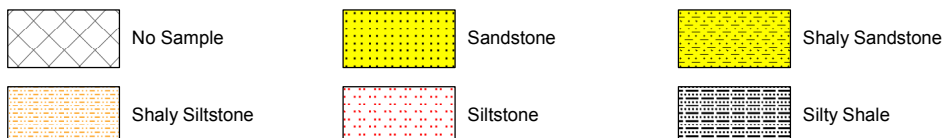


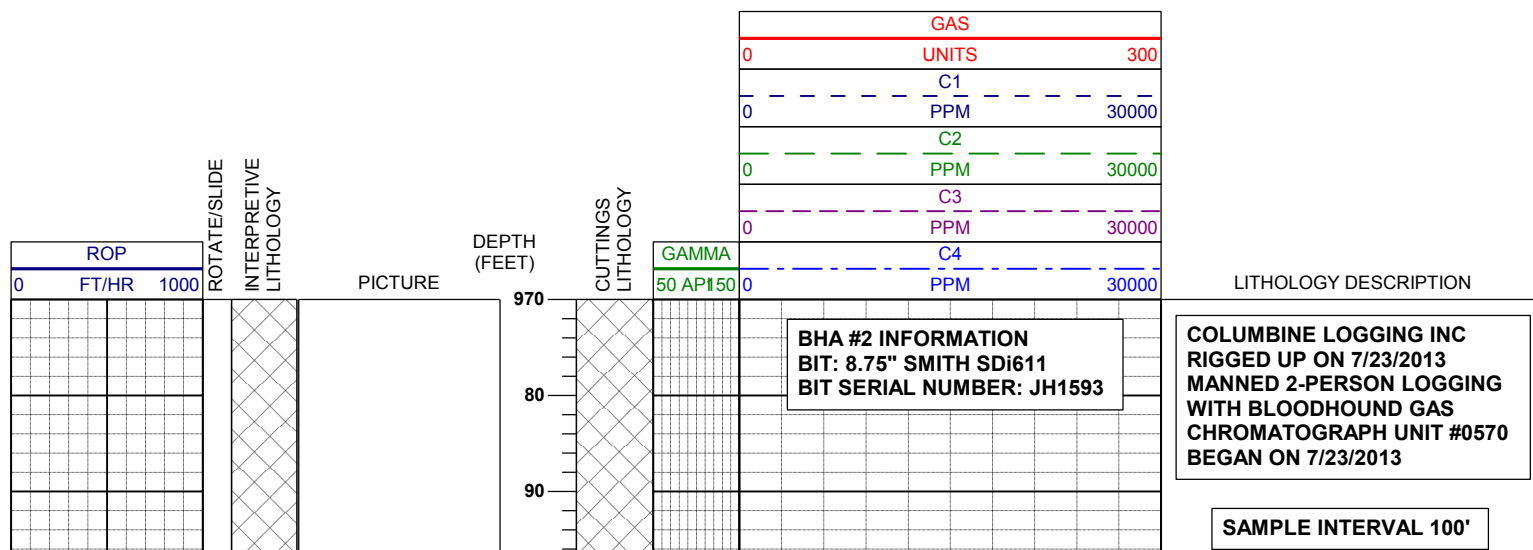
LOG created using LPLOT VH Version 3.0, July 30, 2013, Copyright (C) 1999-2009 Pason Systems Corp.

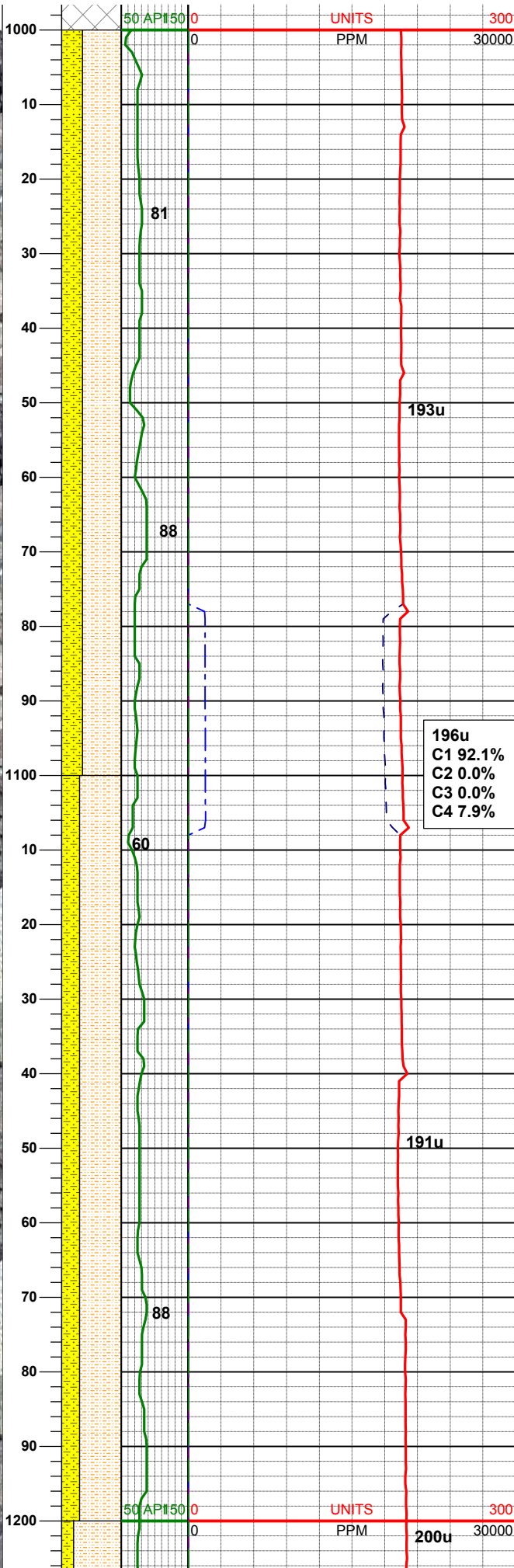
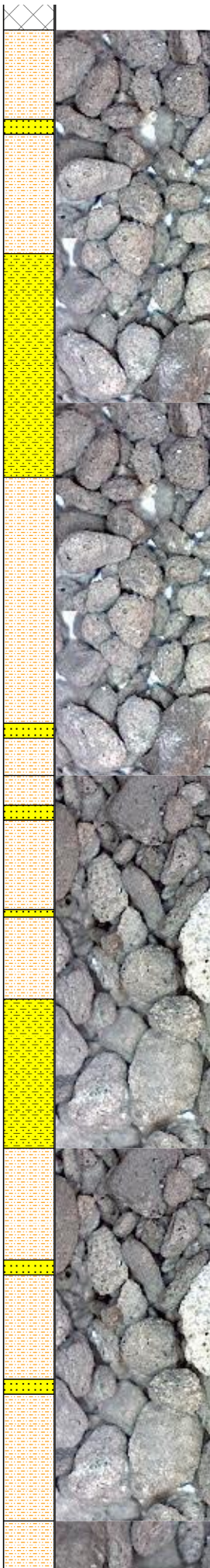
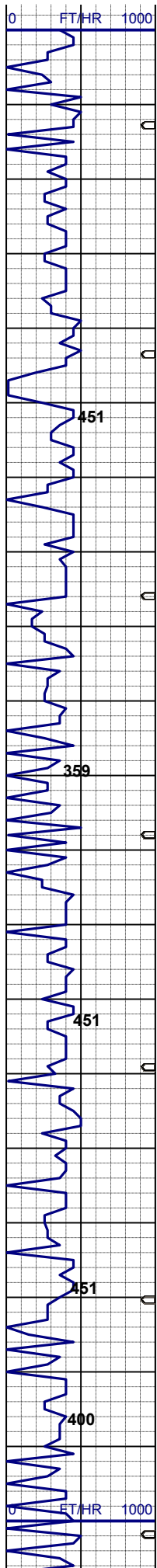
OPERATOR: NOBLE ENERGY
WELL: MOSER H27-79HN
LOCATION: SWSW SEC 22 T3N R65W
COUNTY: WELD
STATE: COLORADO
SPOT: 461' FSL, 291' FWL
ELEVATION: 4,813' GL, 4,826' KB
FIELD: WATTENBERG
SPUD DATE: 7/22/13
TD DATE: 7/30/13
DATES LOGGED: 7/23/13 - 7/30/13
DEPTHS LOGGED: 1,000' - 11568'
LOGGERS: RYAN SULLIVAN, MOHAMMED ALMUBARAK
DRILLING FLUID: H2O, LSND MUD
DRILLING RIG: ENSIGN # 121
API: 05-123-34757-00
LOG TYPE: Vertical
SCALE: 1:240 (5 inches per 100 feet)
REMARKS: Wellsite Geological Services Provided By Columbine Logging Inc.
 Latitude: N40.204950, Longitude: W-104.658240

LITHOLOGIES



ENGINEERING SYMBOLS



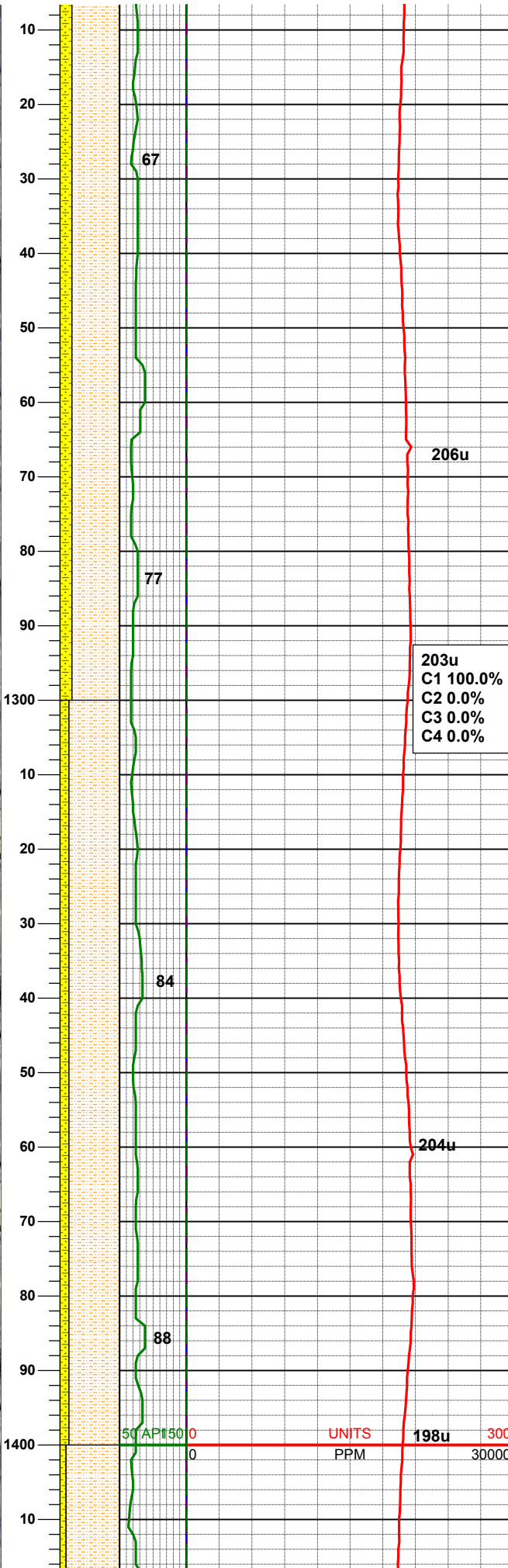
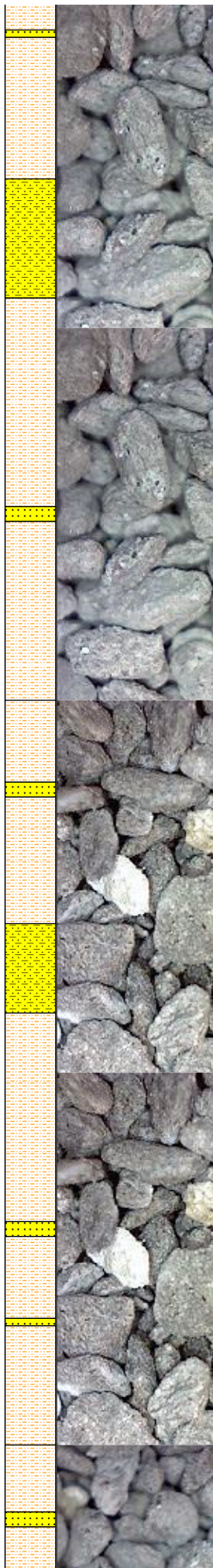
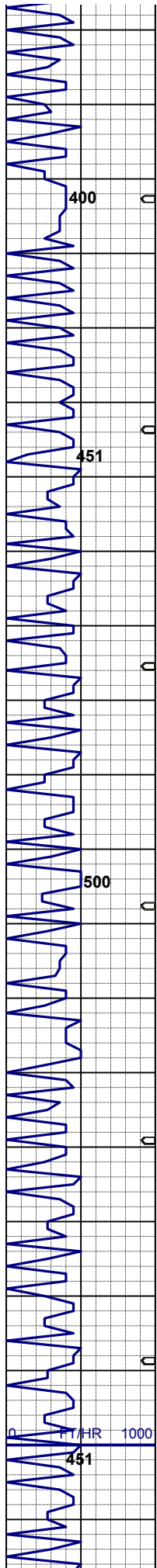


SURVEY @
MD 1025'
INC 0.3°
AZI 241.2°
TVD 1024.95'

SHYSS: lt-mgy, f-mfgr, sbrd-sbang,
mod-psrt, sft, ppor, argcmnt, slcalc,
phlog, grd to
SHYSLTST: lt-mgy, occ dk gy, f-vfgr,
sbrd-sbang, mod srt, arg mtx, sme ss,
slow. diffuse v sl stmg dull bl mky cut,
n flr stn or od

SURVEY @
MD 1119'
INC 0.1°
AZI 65.6°
TVD 1118.95'

SHYSS: lt-mgy, f-mfgr, sbrd-sbang,
mod-psrt, sft, ppor, argcmnt, slcalc,
phlog, grd to
SHYSLTST: lt-mgy, occ dk gy, f-vfgr,
sbrd-sbang, mod srt, arg mtx, sme ss,
slow. diffuse v sl stmg dull bl mky cut,
n flr stn or od



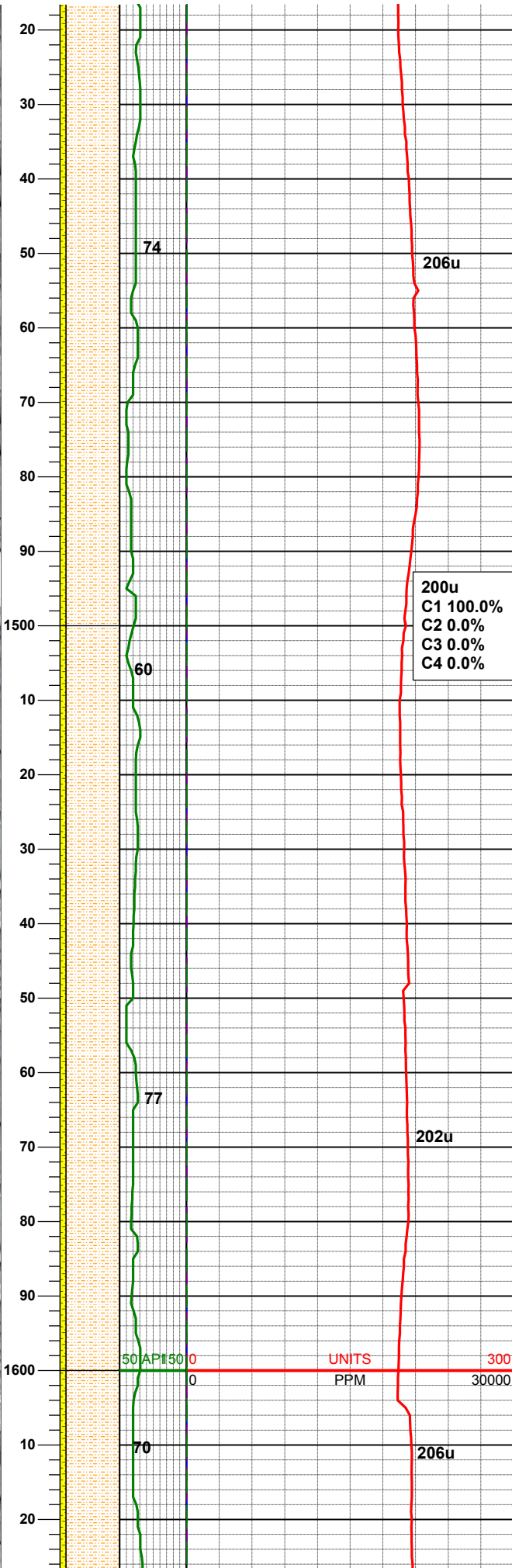
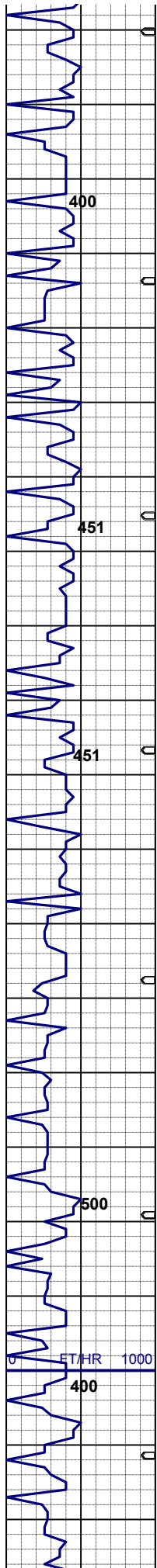
SURVEY @
MD 1214'
INC 0.4°
AZI 183.9°
TVD 1213.95'

SHYSS: lt-mgy, f-mfgr, sbrd-sbang,
mod-psrt, sft, ppor, argcmt, slcalc,
phlog, grd to
SHYSLTST: lt-mgy, occ dk gy, f-vfgr,
sbrd-sbang, mod srt, arg mtx, sme ss,
slow. diffuse v sl stmg dull bl mky cut,
n flor stn or od

SURVEY @
MD 1308'
INC 0.4°
AZI 204.8°
TVD 1307.94'

SHYSS: lt-mgy, f-mfgr, sbrd-sbang,
mod-psrt, sft, ppor, argcmt, slcalc,
phlog, grd to SHYSLTST: lt-mgy, occ
dk gy, f-vfgr, sbrd-sbang, mod srt, arg
mtx, sme ss, slow. diffuse v sl stmg
dull bl mky cut, n flor stn or od

SURVEY @
MD 1403'
INC 0.3°
AZI 276.0°
TVD 1402.94'

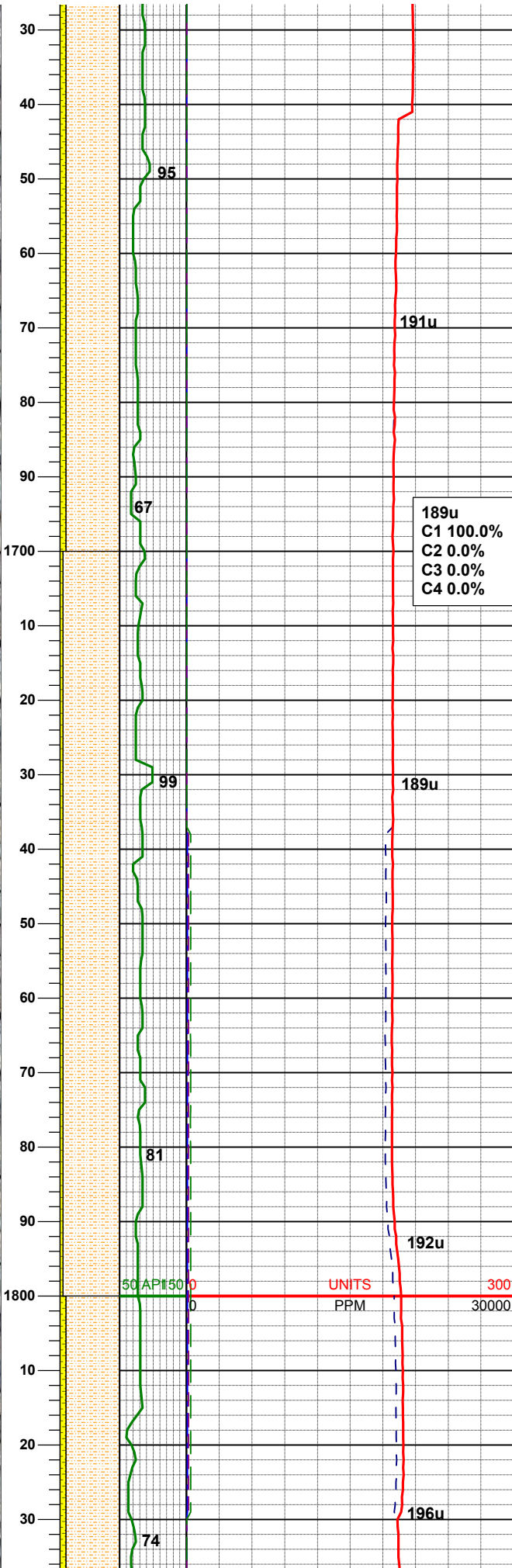
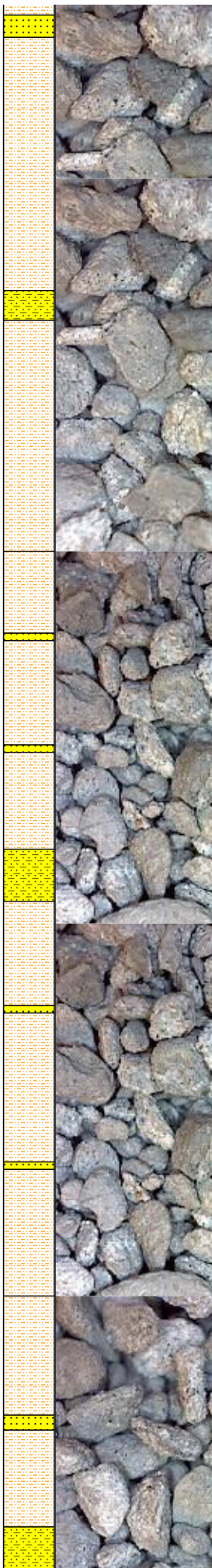
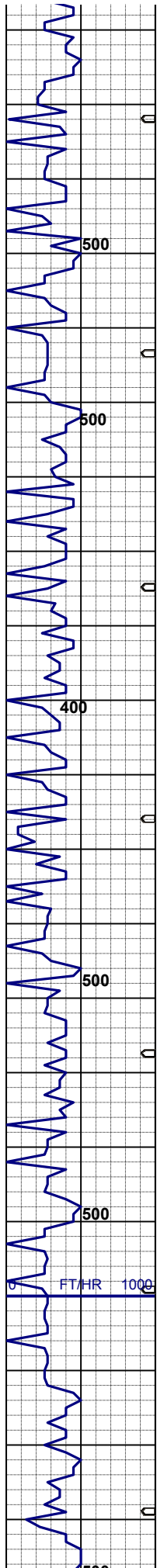


SHYSS: lt-mgy, f-mfgr, sbrd-sbang, mod-psrt, sft, ppor, argcmt, slcalc, phlog, grd to
SHYSLTST: lt-mgy, occ dk gy, f-vfgr, sbrd-sbang, mod srt, arg mtx, sme ss, slow. diffuse v sl stmg dull bl mky cut, n flr stn or od

SURVEY @
MD 1496'
INC 0.2°
AZI 286.1°
TVD 1495.94'

SHYSS: lt-mgy, f-mfgr, sbrd-sbang, mod-psrt, sft, ppor, argcmt, slcalc, phlog, grd to
SHYSLTST: lt-mgy, occ dk gy, f-vfgr, sbrd-sbang, mod srt, arg mtx, sme ss, slow. diffuse v sl stmg dull bl mky cut, n flr stn or od

SURVEY @
MD 1591'
INC 0.4°
AZI 284.1°
TVD 1590.94'

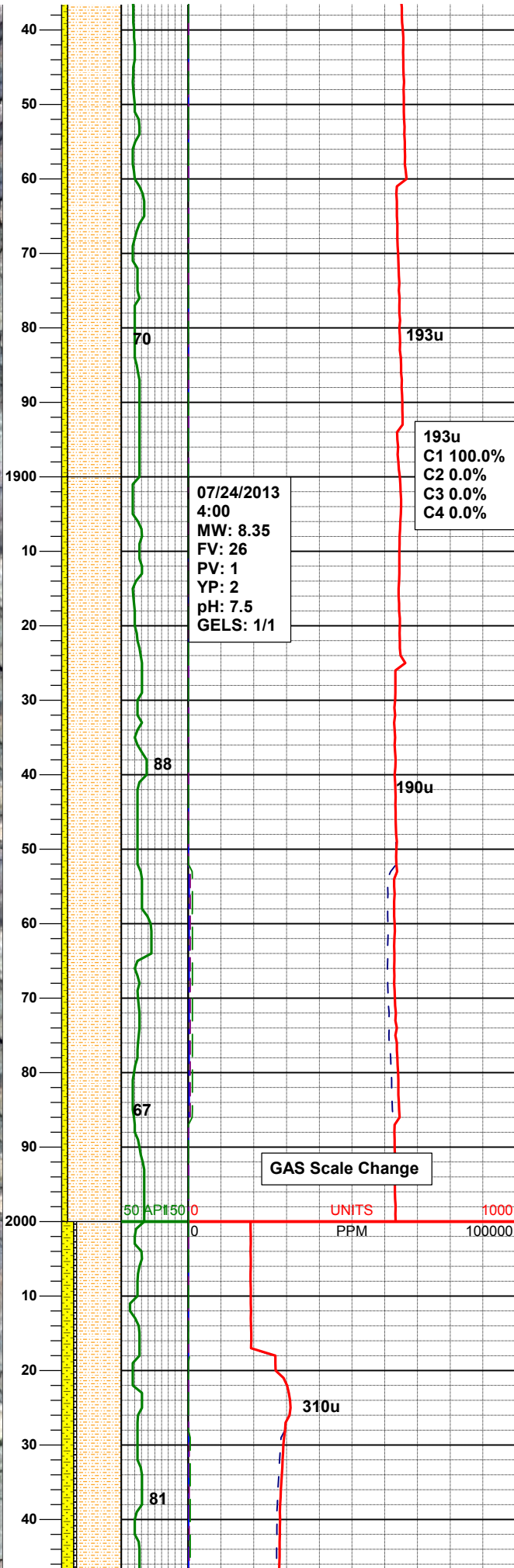
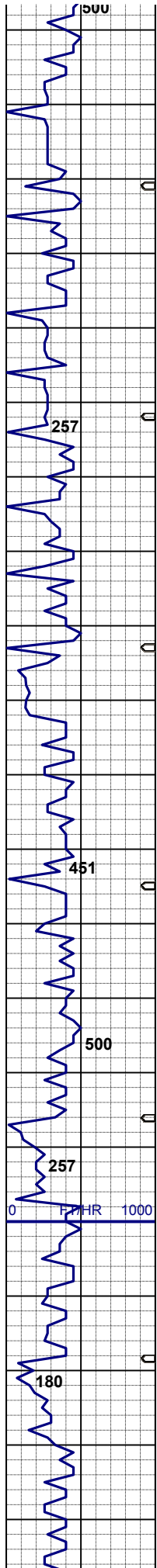


SHYSS: lt-mgy, f-mfgr, sbrd-sbang, mod-psrt, sft, ppor, argcmt, slcalc, phlog, grd to
SHYSLTST: lt-mgy, occ dk gy, f-vfgr, sbrd-sbang, mod srt, arg mtx, sme ss, slow. diffuse v sl stmg dull bl mky cut, n flr stn or od

SURVEY @
MD 1685'
INC 0.8°
AZI 307.3°
TVD 1684.94'

SHYSS: lt-mgy, f-mfgr, sbrd-sbang, mod-psrt, sft, ppor, argcmt, slcalc, phlog, grd to
SHYSLTST: lt-mgy, occ dk gy, f-vfgr, sbrd-sbang, mod srt, arg mtx, sme ss, slow. diffuse v sl stmg dull bl mky cut, n flr stn or od

SURVEY @
MD 1778'
INC 0.7°
AZI 334.6°
TVD 1777.93



SHYSS: lt-mgy, f-mfgr, sbrd-sbang,
mod-psrt, sft, ppor, argcmt, slcalc,
phlog, grd to
SHYSLTST: lt-mgy, occ dk gy, f-vfgr,
sbrd-sbang, mod srt, arg mtx, sme ss,
slow. diffuse v sl stmg dull bl mky cut,
n flr stn or od

MUD WT: 8.4+ VIS: 28 IN
MUD WT: 8.4+ VIS: 28 OUT

SURVEY @
MD 1872'
INC 0.9°
AZI 306.3°
TVD 1871.92'

193u
C1 100.0%
C2 0.0%
C3 0.0%
C4 0.0%

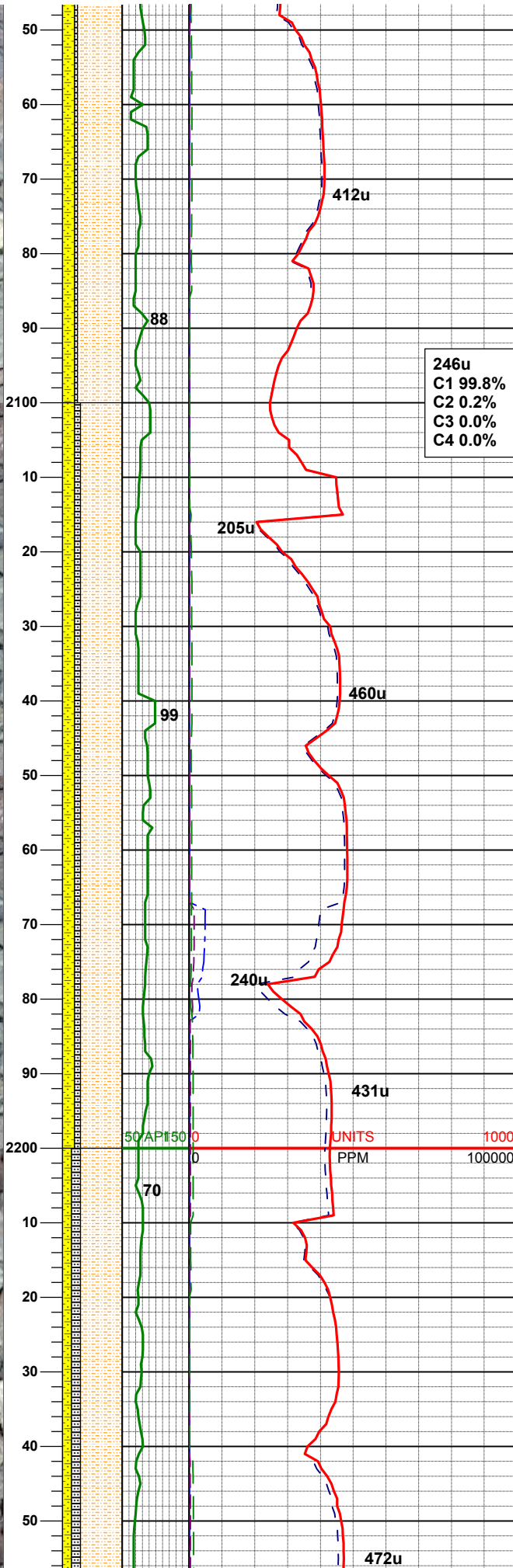
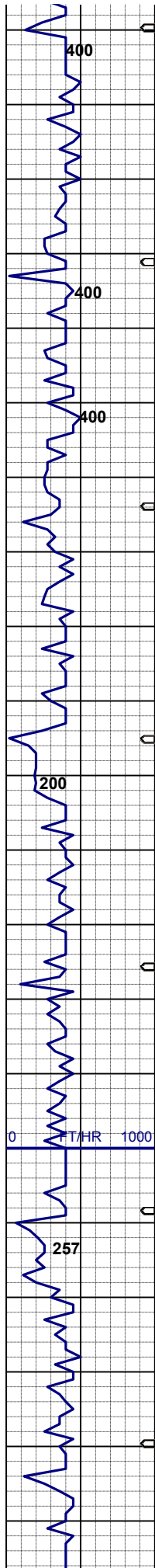
SHYSS: lt-mgy, f-mfgr, sbrd-sbang,
mod-psrt, sft, ppor, argcmt, slcalc,
phlog, grd to
SHYSLTST: lt-mgy, occ dk gy, f-vfgr,
sbrd-sbang, mod srt, arg mtx, sme ss,
slow. diffuse v sl stmg dull bl mky cut,
n flr stn or od

SURVEY @
MD 1967'
INC 1.1°
AZI 117.1°
TVD 1966.91'

GAS Scale Change

UNITS
PPM

SHYSLTST: lt gy, vf-f gr, sbang-sbrd,
mod srt, gt tex, arg-sltly mtx, m sft, brit
fri vel calc spec w/ mica frag thru



SHYSS: lt gy, clr-trnsl gr, vf-f gr, sbang-sbrd, mod srt, mod cmt, mod hd, fri ip, tt clus, v sl calc; tr sltysh, slow. diffuse sl stmg dull bl mky cut, n flr stn or od

SURVEY @
MD 2062'
INC 3.0°
AZI 224°
TVD 2061.90'

MUD WT: 8.4 **VIS: 27 IN**
MUD WT: 8.4+ **VIS: 28 OUT**

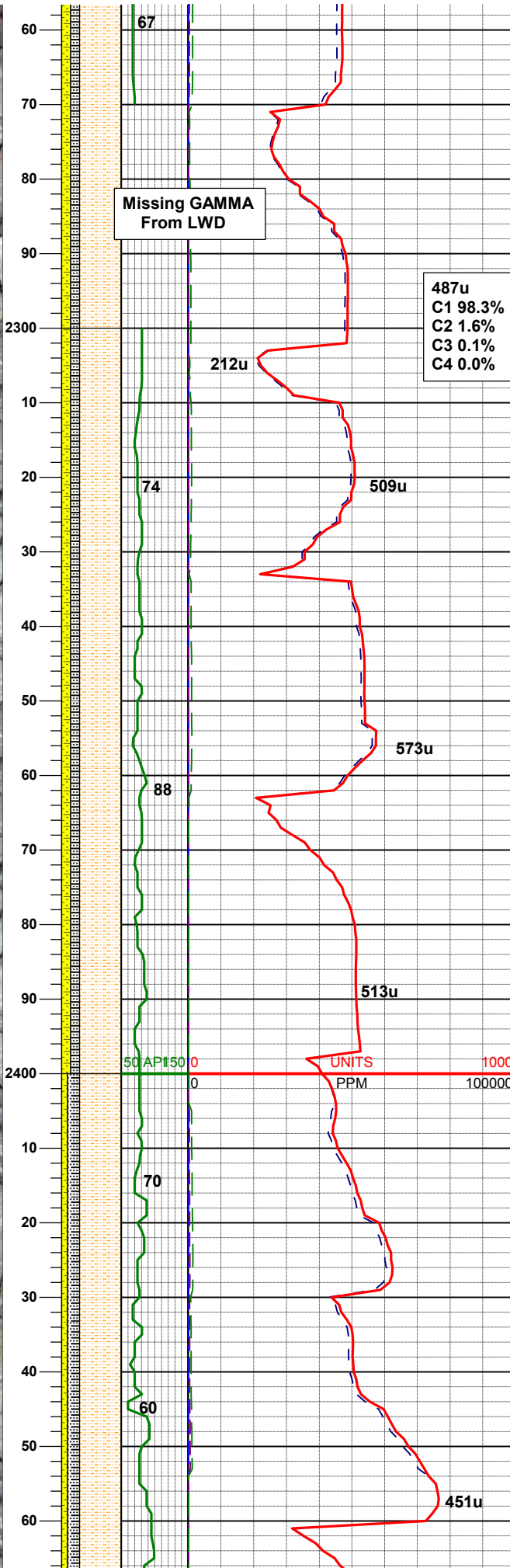
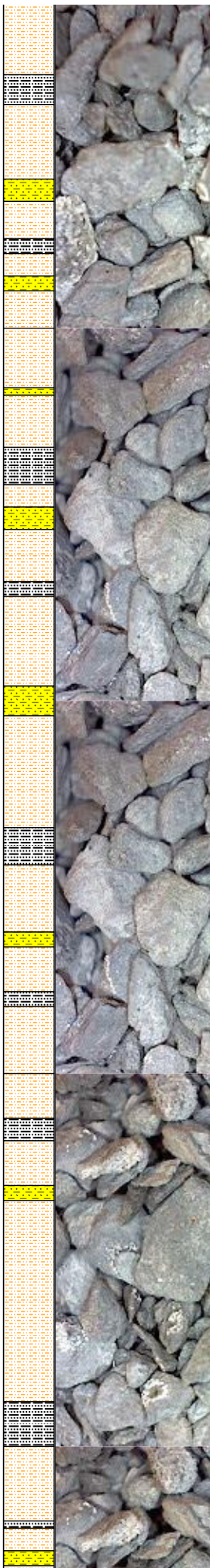
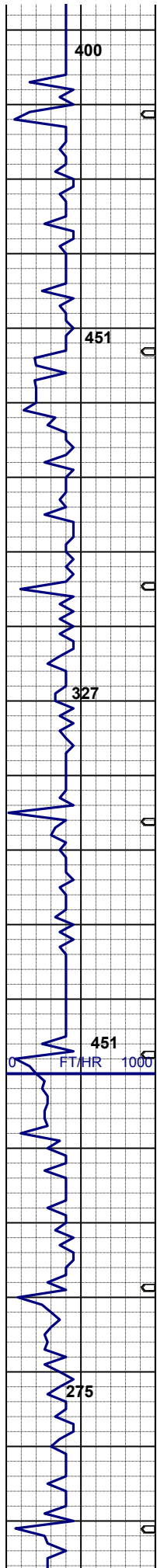
246u
C1 99.8%
C2 0.2%
C3 0.0%
C4 0.0%

SHYSLTST: lt gy, vf-f gr, sbang-sbrd, mod srt, gt tex, arg-sltly mtz, m sft, brit -fri, vsl calc, spec w/ mica frag thru; SHYSS: lt gy, clr-trnsl gr, vf-f gr, sbang-sbrd, mod srt, mod cmt, mod hd, fri ip, tt clus, v sl calc; tr sltysh, slow. diffuse sl stmg dull bl mky cut, n flr stn or od

SURVEY @
MD 2157'
INC 3.3°
AZI 207.3°
TVD 2156.73'

MUD WT: 8.4 **VIS: 27 IN**
MUD WT: 8.4+ **VIS: 28 OUT**

SHYSLTST: lt gy, vf-f gr, sbang-sbrd, mod srt, gt tex, arg-sltly mtz, m sft, brit -fri, vsl calc, spec w/ mica frag thru; SHYSS: lt gy, clr-trnsl gr, vf-f gr, sbang-sbrd, mod srt, mod cmt, mod hd, fri ip, tt clus, v sl calc; tr sltysh, slow. diffuse sl stma dull bl mkv cut. n



flor stn or od

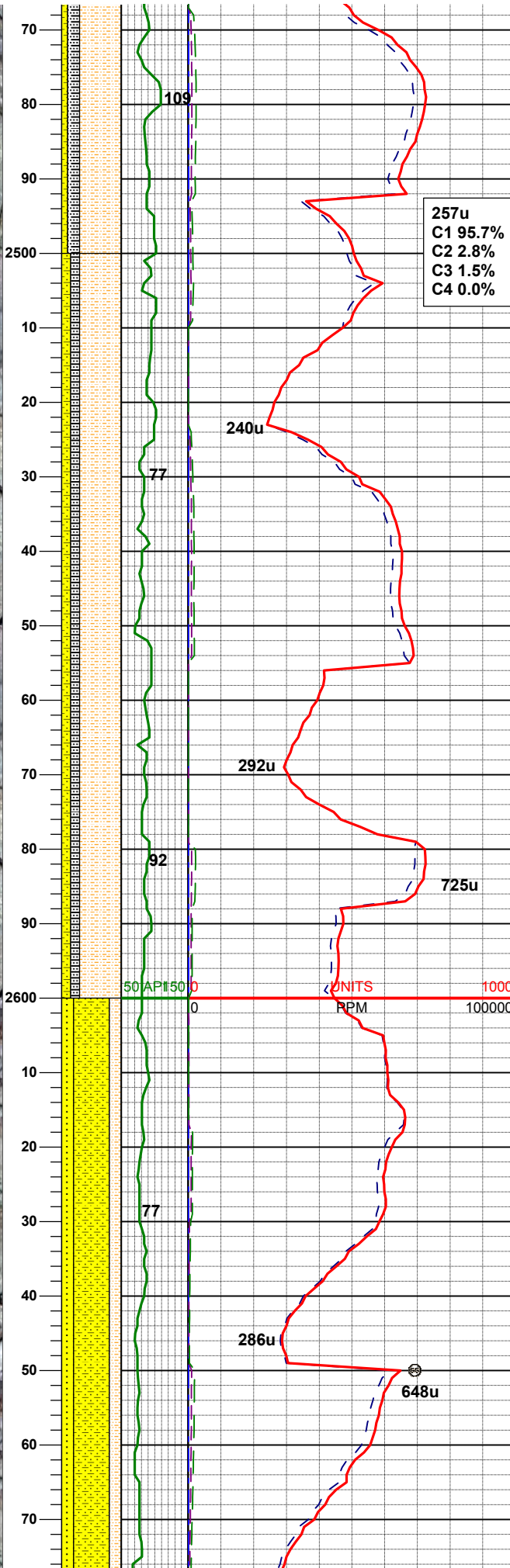
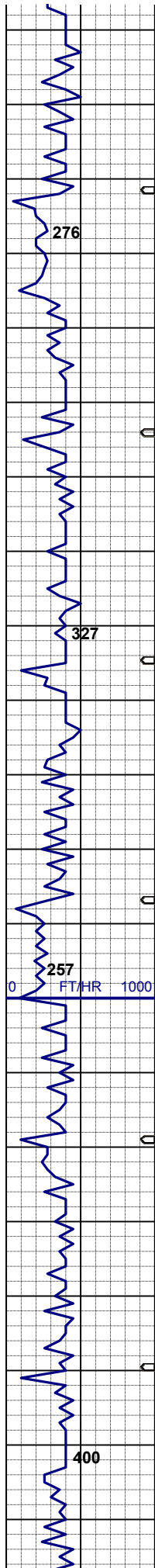
SURVEY @
MD 2252'
INC 3.8°
AZI 212.8°
TVD 2251.55'

SURVEY @
MD 2346'
INC 4.1°
AZI 221.9°
TVD 2345.32'

SHYSLTST: lt gy, vf-f gr, sbang-sbrd, mod srt, gt tex, arg-sltly mtz, m sft - firm, brit-fri, vsl calc, spec w/ mica frag thru; SHYSS: lt gy, clr-trnsl gr, vf-f gr, sbang-sbrd, mod srt, mod cmt, mod hd, fri ip, tt clus, v sl calc; tr sltysh, slow. diffuse sl stmg dull bl mky cut, n flor stn or od

SURVEY @
MD 2441'
INC 4.5°
AZI 213.1°
TVD 2440.06'

SHYSLTST: lt gy, vf-f gr, sbang-sbrd, mod srt, gt tex, arg-sltly mtz, m sft - firm, brit-fri, vsl calc, spec w/ mica frag thru; SLTYSH: lt gy - m gy, sme dk gy - gybrn, sft - mod firm, brit ip, sbply - sbblky, sme ply, sl gt tex, arg -slty mtz, sl calc; SHYSS: lt gy, clr-trnsl gr, vf-f gr, sbang-sbrd, mod srt, mod cmt, mod hd, fri ip, tt clus, v sl calc; slow. diffuse sl stmg dull bl mky cut, n flor stn or od



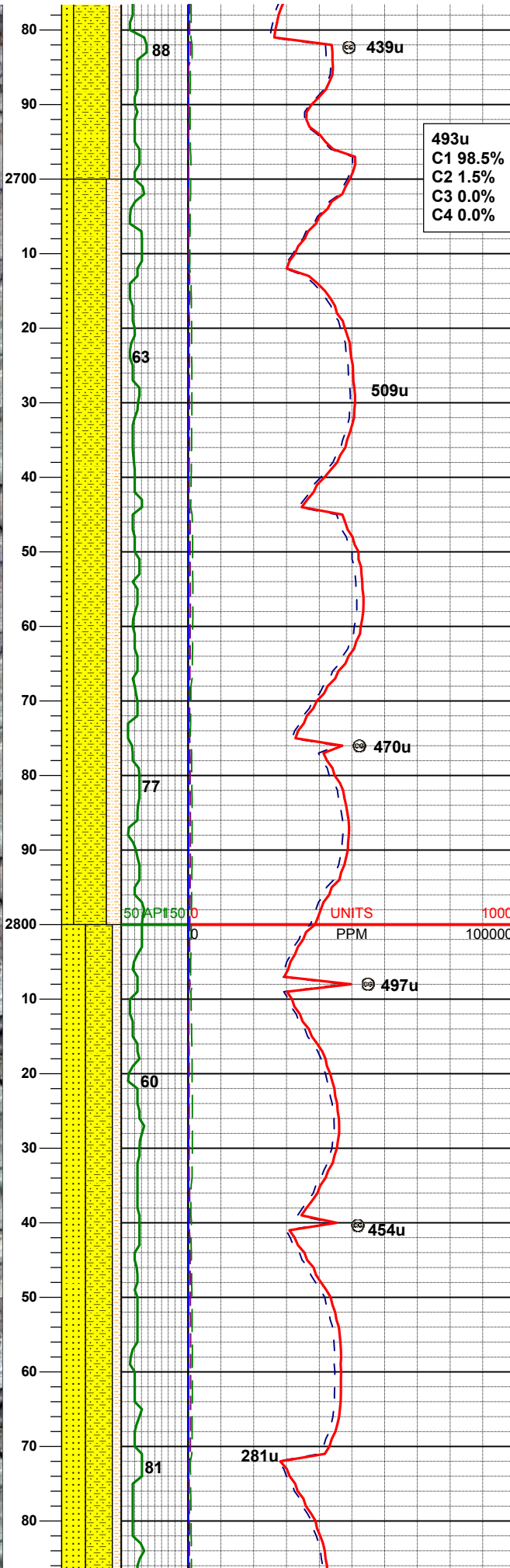
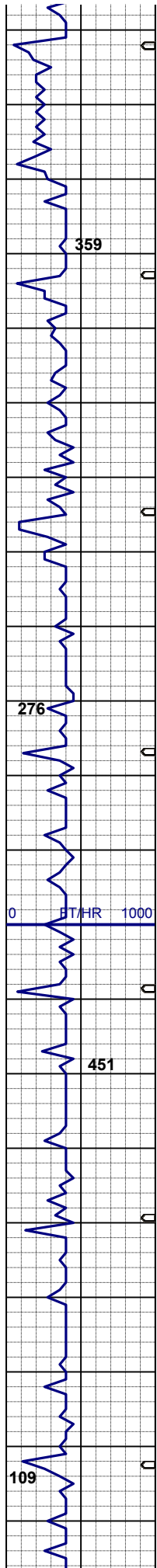
257u
C1 95.7%
C2 2.8%
C3 1.5%
C4 0.0%

SURVEY @
MD 2536'
INC 5.5°
AZI 224.2°
TVD 2534.7'

SHYSLTST: lt gy, vf-f gr, sbang-sbrd, mod srt, gt tex, arg-sltly mtz, m sft - firm, brit-fri, vsl calc, spec w/ mica frag thru; SLTYSH: lt gy - m gy, sme dk gy - gybrn, sft - mod firm, brit ip, sbply - sbbly, sme pty, sl gt tex, arg-sltly mtz, w/ sme dism pyr, sl calc; SHYSS: lt gy - wh ip, clr-trnsl gr, vf-f gr, sbang-sbrd, mod srt, mod cmt, mod hd, fri ip, tt clus, v sl calc; slow. diffuse sl stmg dull bl mky cut, n flor stn or od

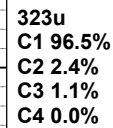
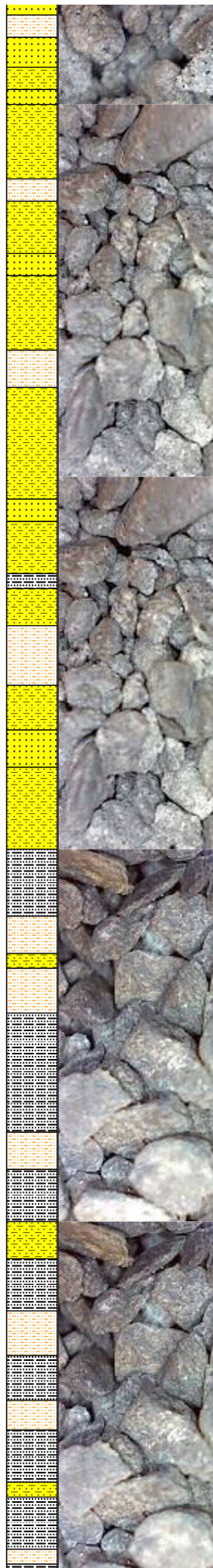
SURVEY @
MD 2631'
INC 5.9°
AZI 211.0°
TVD 2629.23'

SHYSS: lt gy - wh ip, clr-trnsl gr, vf-f gr, sbang-sbrd, mod srt, mod cmt, mod hd, fri ip, tt clus, v sl calc; SS: wh -ltgy, s&p, clr - trnsl gr, f - m gr, sbbly - sb ang, p - mod srt, argcmt, m sft - hd, pred brit, sl calc, tr glau; SHYSLTST: lt gy, vf-f gr, sbang-sbrd, mod srt, gt tex, arg-sltly mtz, m sft - firm, brit-fri, sl calc, spec w/ mica frag thru; tr sltysh, slow. diffuse sl stmg dull bl mky cut, n flor stn or od



SHYSS: lt gy - wh ip, clr-trnsl gr, vf-f gr, sbang-sbrd, mod srt, mod cmt, mod hd, brit - fri ip, tt clus, v sl calc; SS: wh-ltgy, s&p, clr - trnsl gr, f - m gr, sbblky - sb ang, p - mod srt, argcmt, m sft - hd, pred brit, sl calc, tr glau; SHYSLTST: lt gy - gy brn, vf-f gr, sbang-sbrd, mod srt, gt tex, arg-slty mtx, m sft - firm, brit-fri, sl calc, spec w/ mica frag thru; tr sltysh, slow. diffuse sl stmg dull bl mky cut, n flor stn or od

SHYSS: lt gy - wh ip, clr-trnsl gr, vf-f gr, sbang-sbrd, mod srt, mod cmt, mod sft - hd, brit - fri ip, tt clus, v sl calc; SS: ltgy, s&p, clr - trnsl gr, f - m gr, sbblky - sb ang, p - mod srt, argcmt, mod hd, pred brit, sl calc, tr glau; SHYSLTST: lt gy - gy brn, vf-f gr, sbang-sbrd, mod srt, gt tex, arg-slty mtx, m sft - firm, brit-fri, sl calc, spec w/ mica frag thru; tr sltysh, slow. diffuse sl stmg dull bl mky cut, n flor stn or od



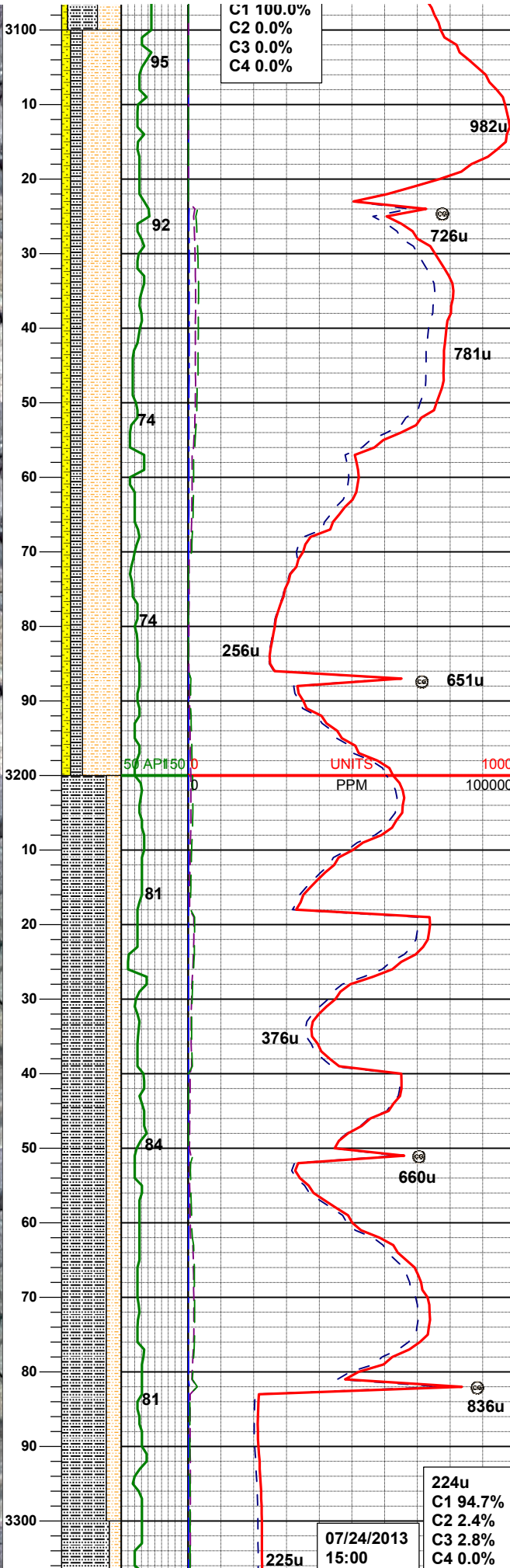
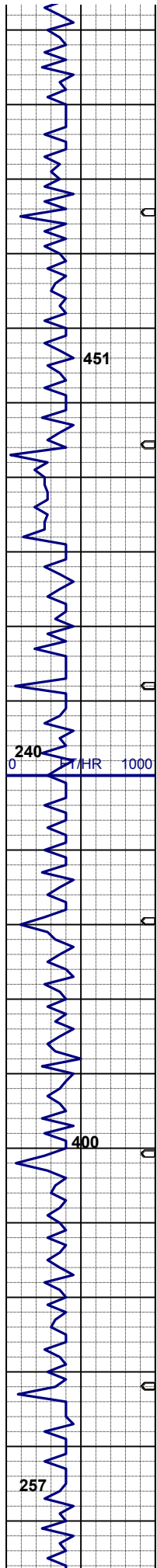
SURVEY @
MD 2915'
INC 7.1°
AZI 208.4°
TVD 2910.94'

SHYSS: lt gy - wh ip, clr-trnsl gr, vf-f gr, sbang-sbrd, mod srt, mod cmt, mod sft - hd, brit - fri ip, tt clus, v sl calc; SS: ltgy, s&p, clr - trnsl gr, f - m gr, sbblky - sb ang, p - mod srt, argcmt, mod hd, pred brit, sl calc, tr glau; SHYSLTST: lt gy - gy brn, vf-f gr, sbang-sbrd, mod srt, gt tex, arg-sly mtX, m sft - firm, brit-fri, sl calc, spec w/ mica frag thru; tr sitysh, slow. diffuse sl stmg dull bl mky cut, n flor stn or od

**Logger's Top Pierre
@ 3000' MD**

SURVEY @
MD 3010'
INC 7.1°
AZI 206.3°
TVD 3005.21'

SLTYSH: lt gy - m gy, sme dk gy, v sft
- mod frm, brit ip, sbply - sbblky, sme
ppty, sl gt tex, arg-sly mtx, v sl calc,
SHYSTLT: lt gy - gy brn, sdy ip, vf-f
gr, sbang-sbrd, gt tex, arg-sly mtx,
mod srt, m sft - frm, brit-fri, sl calc,
spec w/ mica frag thru; ocl shy ss,
slow. diffuse sl stmg dur bl mky cut, tr
dul yelgn & orng mnrl flr, n stn or od



SURVEY @
MD 3105'
INC 6.3°
AZI 201.2°
TVD 3099.56'

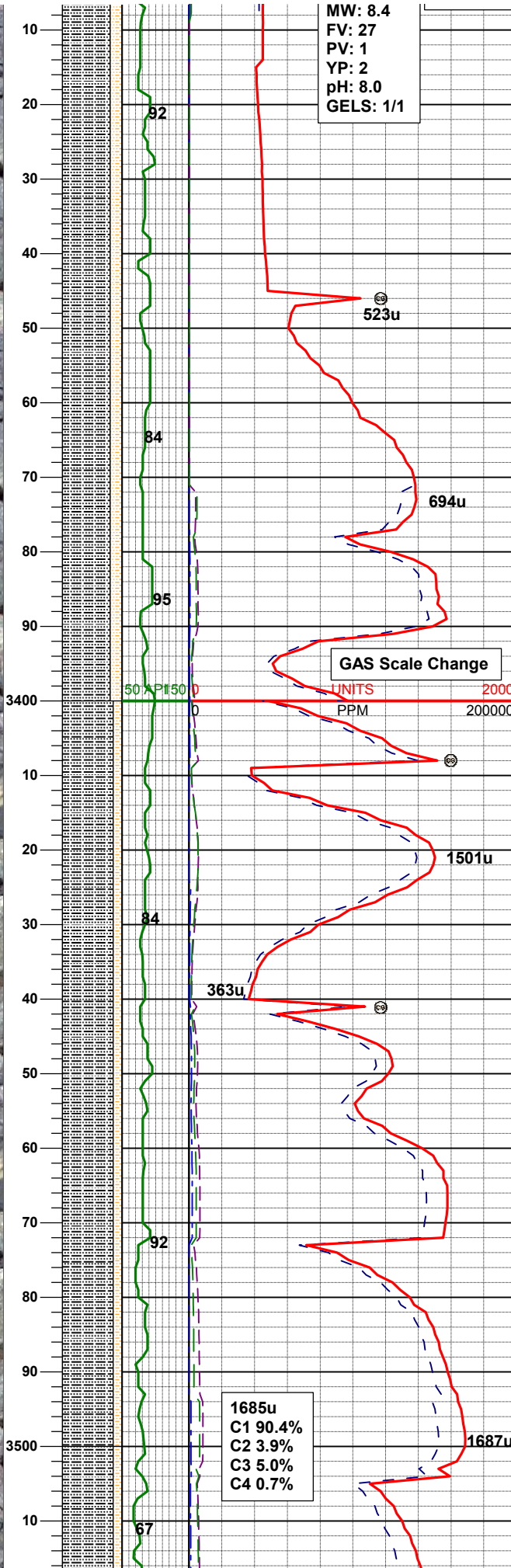
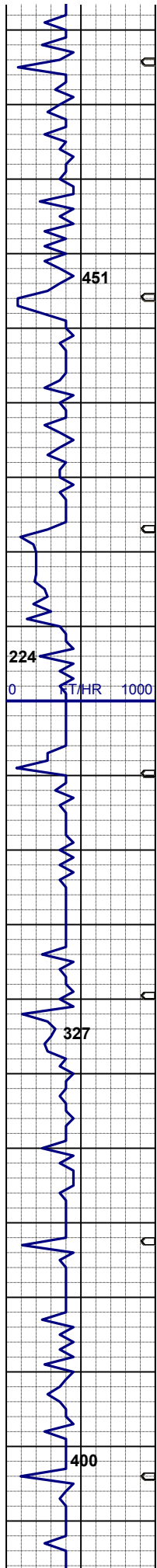
SHYSLTST: lt gy - gy brn, sdy ip, vf-f gr, sbang-sbrd, gt tex, arg-slty mtx, mod srt, m sft - firm, brit-fri, sl calc, spec w/ mica frag thru; SLTYSH: lt gy - m gy, sme dk gy, v sft - mod firm, brit ip, sbply - sbbly, sme pty, sl gt tex, arg-slty mtx, v sl calc, occ shy ss, slow. diffuse sl stmg dull bl mky cut, tr dul yelgn & org mnrl flor, n stn or od

SURVEY @
MD 3200'
INC 7.9°
AZI 206.8°
TVD 3193.83'

SLTYSH: lt gy - m gybrn, sme dk gy, mod firm, brit ip, sbply - sbbly, sme pty, sl gt tex, arg-slty mtx, w/ dism pyr, v sl calc; SHYSLTST: lt gy - gy brn, sdy ip, vf-f gr, sbang-sbrd, gt tex, arg-slty mtx, mod srt, m sft - firm, brit-fri, sl calc, v slow. diffuse sl stmg dull bl mky cut, tr dul yelgn mnrl flor, n stn or od

SURVEY @
MD 3295'
INC 7.4°
AZI 202.7°
TVD 3287.99'

224u
C1 94.7%
C2 2.4%
C3 2.8%
C4 0.0%



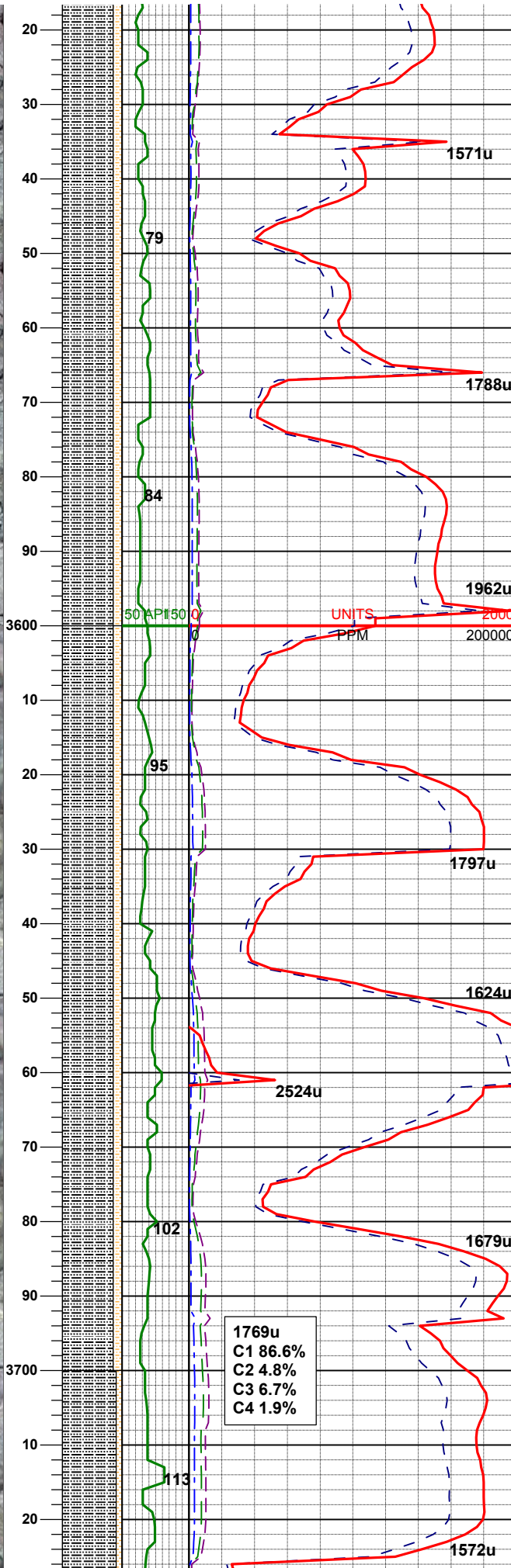
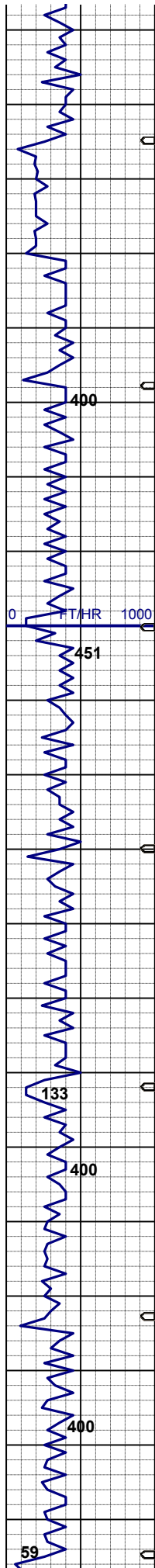
MW: 8.4
FV: 27
PV: 1
YP: 2
pH: 8.0
GELS: 1/1

SLTYSH: lt gy - m gybrn, sme dk gy, mod firm - firm, brit ip, sbply - sbbkly, sme pty, sl gt tex, arg-sltly mtx, w/ dism pyr, v sl calc; SHYSLTST: lt gy - gy brn, sdy ip, vf-f gr, sbang-sbrd, gt tex, arg-sltly mtx, mod srt, m sft - firm, brit-fri, sl calc, n flor cut stn or od

SURVEY @
MD 3389'
INC 7.7°
AZI 205.2°
TVD 3381.17'

SLTYSH: lt gy - m gybrn, sme dk gy, mod firm - firm, brit ip, sbply - sbbkly, sme pty, sl gt tex, arg-sltly mtx, w/ dism pyr, v sl calc; SHYSLTST: lt gy - gy brn, sdy ip, vf-f gr, sbang-sbrd, gt tex, arg-sltly mtx, mod srt, m sft - firm, brit-fri, sl calc, n flor cut stn or od

SURVEY @
MD 3484'
INC 7.1°
AZI 199.8°
TVD 3475.38'



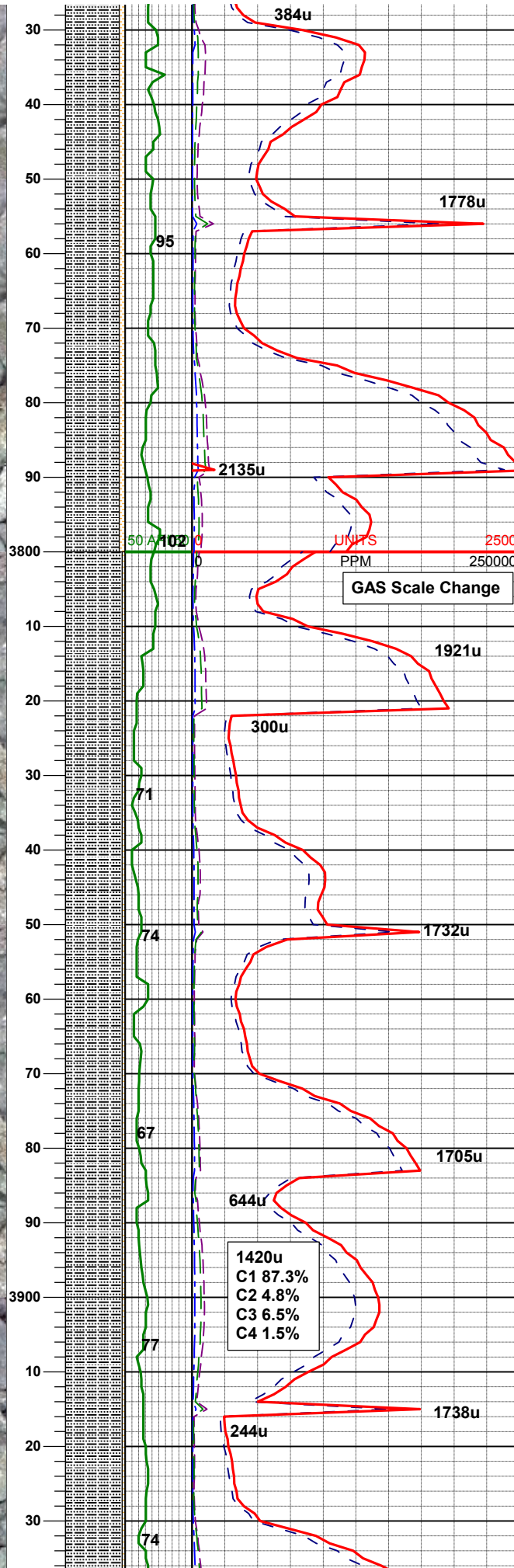
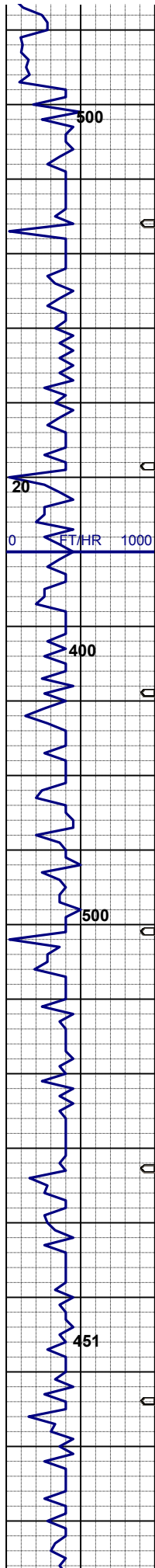
SLTYSH: lt gy - m gybrn, sme dk gy,
mod firm - firm, brit ip, sbply - sbbly,
sme pty, sl gt tex, arg-sly mtx, w/
dism pyr, v sl calc; SHYSLTST: lt gy -
gy brn, sdy ip, vf-f gr, sbang-sbrd, gt
tex, arg-sly mtx, mod srt, m sft - firm,
brit-fri, sl calc, n flor cut stn or od

MUD WT: 8.4 VIS: 28 IN
MUD WT: 8.4+ VIS: 27 OUT

SURVEY @
MD 3579'
INC 7.6°
AZI 211.2°
TVD 3569.61'

SLTYSH: lt gy - m gybrn, sme dk gy,
mod firm - firm, brit ip, sbply - sbbly,
sme pty, sl gt tex, arg-sly mtx, w/
dism pyr, v sl calc; SHYSLTST: lt gy -
gy brn, sdy ip, vf-f gr, sbang-sbrd, gt
tex, arg-sly mtx, mod srt, m sft - firm,
brit-fri, sl calc, n flor cut stn or od

SURVEY @
MD 3674'
INC 7.0°
AZI 209.1°
TVD 3663.84'



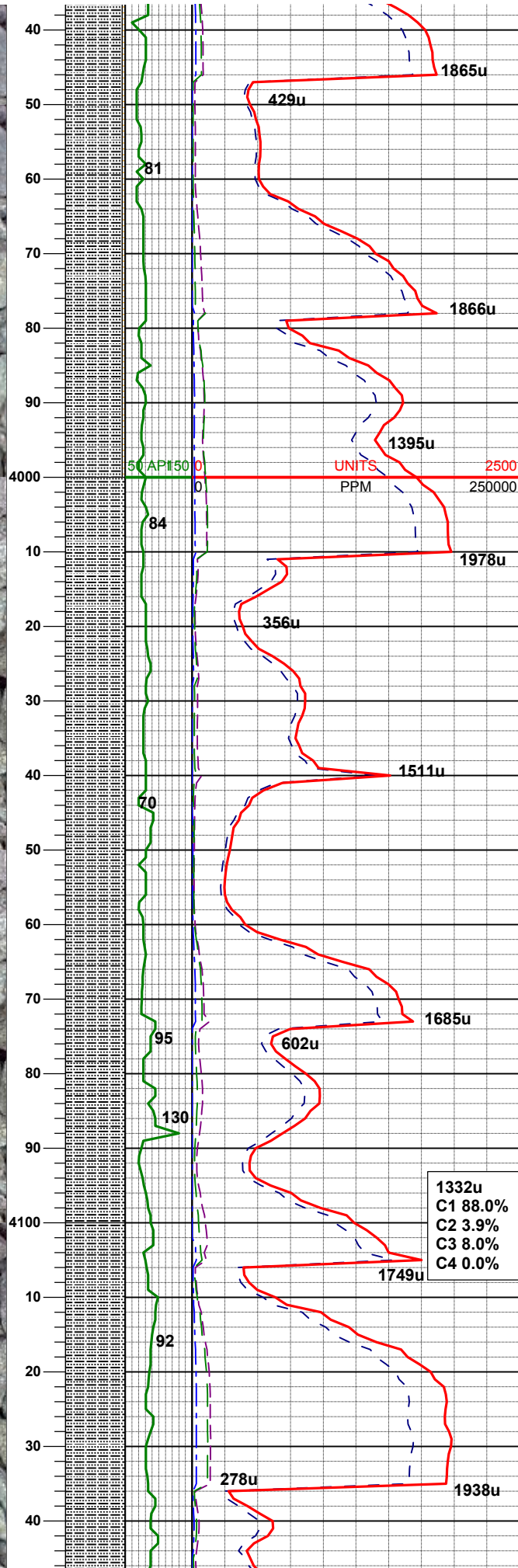
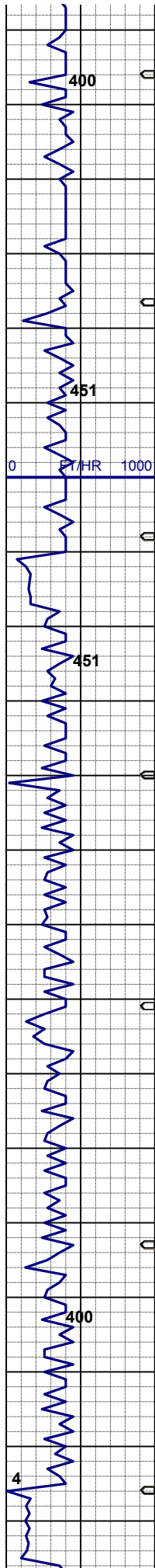
SLTYSH: lt gy - m gybrn, sme dk gy, mod firm - firm, brit ip, sbply - sbbky, sme ply, sl gt tex, arg-sltly mtx, w/ dism pyr, v sl calc; SHYSLTST: lt gy - gy brn, sdy ip, vf-f gr, sbang-sbrd, gt tex, arg-sltly mtx, mod srt, m sft - firm, brit-fri, sl calc, n flor cut stn or od

Logger's Top Parkman
@ 3815' MD / 3804' TVD

SLTYSH: lt gy - m gybrn, sme dk gy, mod firm - firm, brit ip, sbply - sbbky, sme ply, sl gt tex, arg-sltly mtx, w/ dism pyr, v sl calc; SHYSLTST: lt gy - gy brn, sdy ip, vf-f gr, sbang-sbrd, gt tex, arg-sltly mtx, mod srt, m sft - firm, brit-fri, sl calc, n flor cut stn or od

SURVEY @
MD 3863'
INC 6.0°
AZI 210.1°
TVD 3851.66'

MUD WT: 8.4 VIS: 28 IN
MUD WT: 8.4 VIS: 28 OUT



SLTYSH: lt gy - m gybrn, sme dk gy, mod firm - firm, brit ip, sbply - sbbky, sme ply, sl gt tex, arg-sly mtz, w/ dism pyr, v sl calc; SHYSLTST: lt gy - gy brn, sdy ip, vf-f gr, sbang-sbrd, gt tex, arg-sly mtz, mod srt, m sft - firm, brit-fri, sl calc, n flor cut stn or od

SURVEY @
MD 3957'
INC 6.0°
AZI 211.0°
TVD 3945.14'

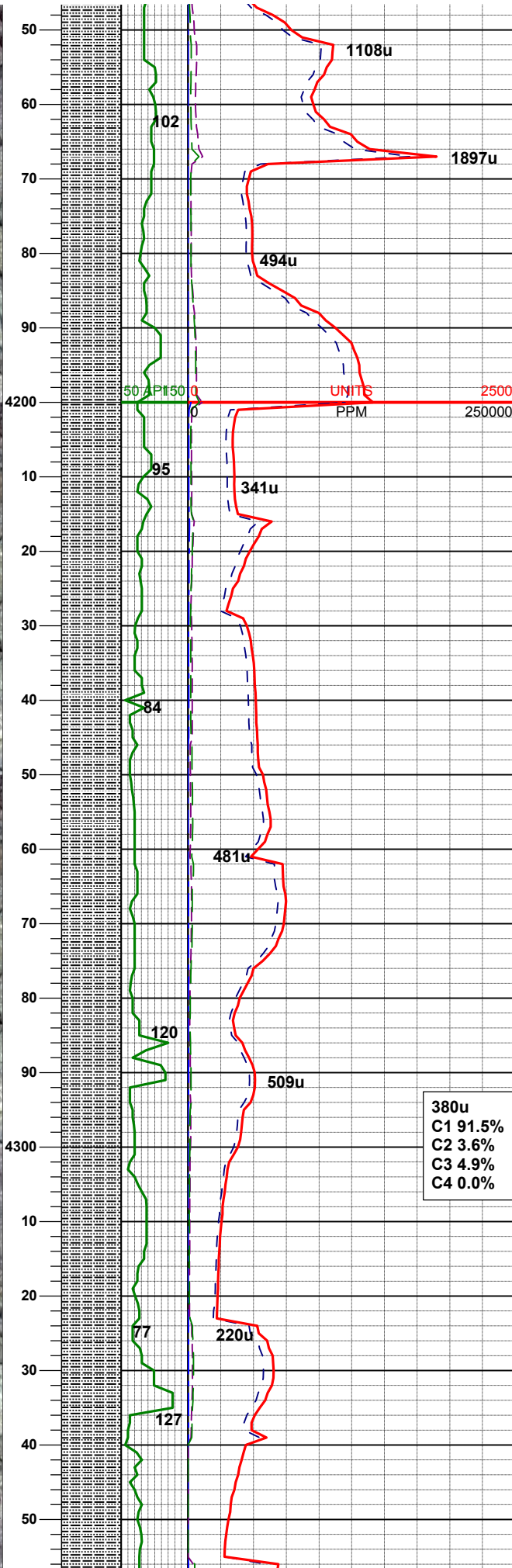
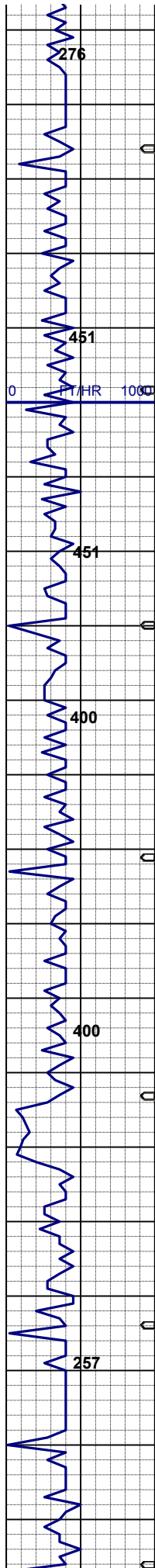
SLTYSH: lt gy - m gybrn, sme dk gy, mod firm - firm, brit ip, sbply - sbbky, sme ply, sl gt tex, arg-sly mtz, w/ dism pyr, v sl calc

SURVEY @
MD 4052'
INC 6.9°
AZI 221.0°
TVD 4039.54'

1332u
 C1 88.0%
 C2 3.9%
 C3 8.0%
 C4 0.0%

SURVEY @
MD 4147'
INC 7.7°
AZI 218.7°
TVD 4133.77'

SLTYSH: lt gy - m gybrn, sme dk gy, mod firm - firm, brit ip, sbply - sbbky, sme ply, sl gt tex, arg-sly mtz, w/ dism pyr, v sl calc



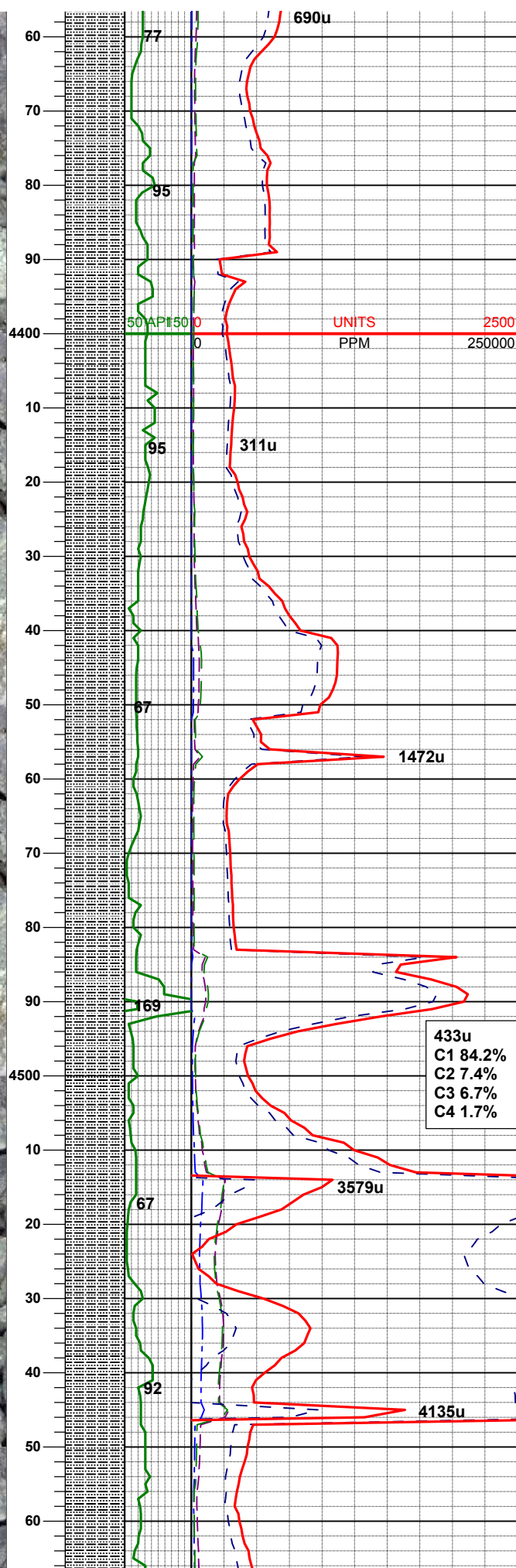
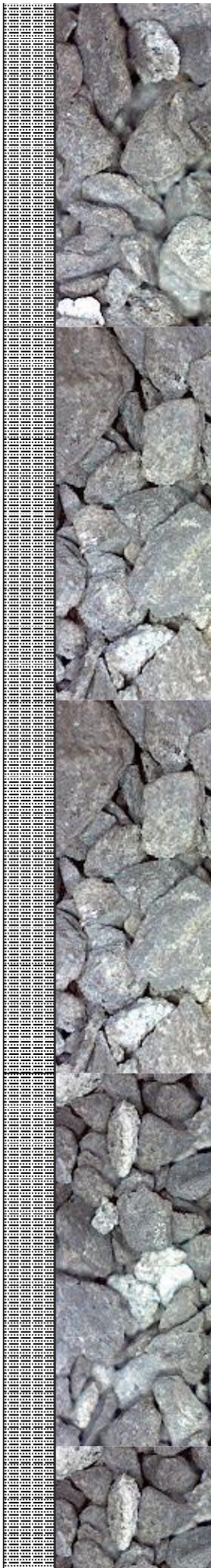
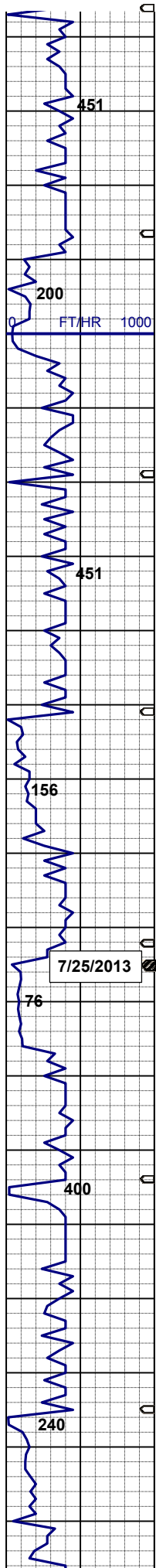
mod firm - firm, brit ip, sbply - sbbky,
sme ply, sl gt tex, arg-sly mtx, w/
dism pyr, v sl calc

SURVEY @
MD 4242'
INC 7.5°
AZI 217.3°
TVD 4227.94'

SLTYSH: lt gy - m gybrn, sme dk gy,
mod firm - firm, brit ip, sbply - sbbky,
sme ply, sl gt tex, arg-sly mtx, w/
dism pyr, v sl calc

SURVEY @
MD 4336'
INC 8.3°
AZI 223.3°
TVD 4321.05'

SLTYSH: lt gy - m gybrn, sme dk gy,
mod firm - firm, brit ip, sbply - sbbky,
sme ply, sl gt tex, arg-sly mtx, w/
dism pyr, v sl calc



Logger's Top Sussex
@ 4418' MD / 4403' TVD

SURVEY @
MD 4431'
INC 6.2°
AZI 214.0°
TVD 4415.29'

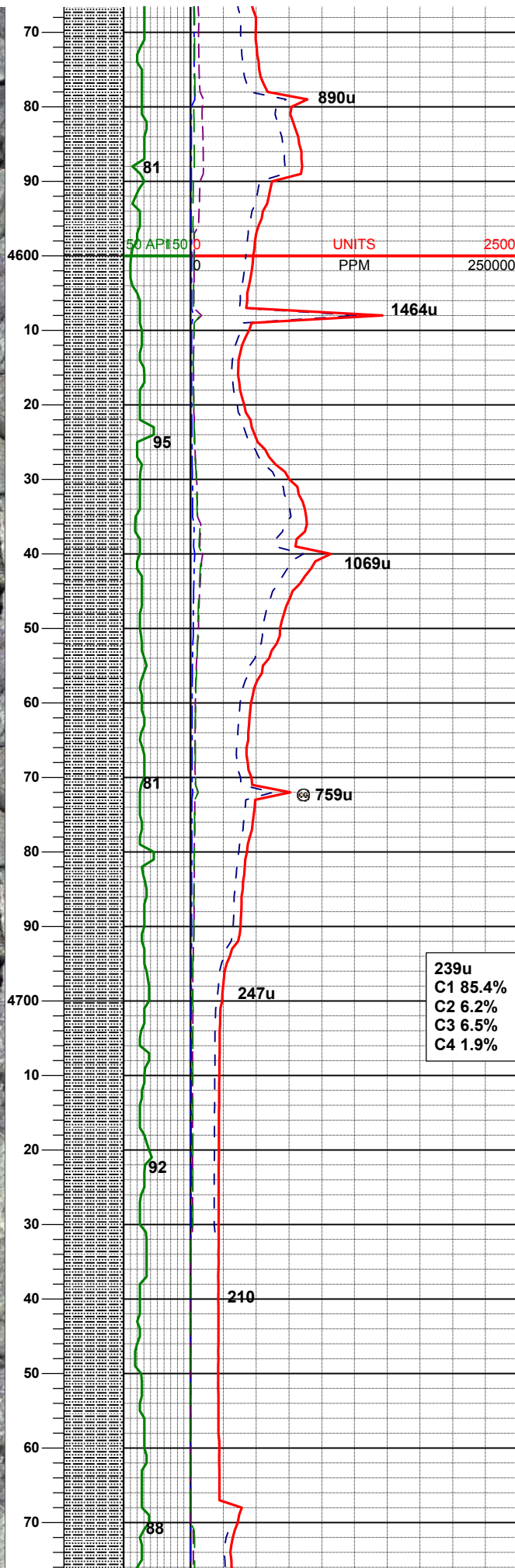
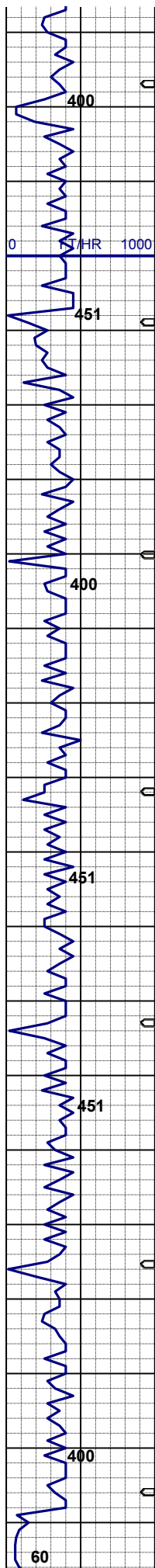
SLTYSH: lt gy - m gybrn, sme dk gy,
mod firm - firm, brit ip, sbply - sbbly,
sme ply, sl gt tex, arg-sly mtz, w/
dism pyr, v sl calc

MUD WT: 8.4 VIS: 28 IN
MUD WT: 8.4 VIS: 28 OUT

433u
C1 84.2%
C2 7.4%
C3 6.7%
C4 1.7%

SURVEY @
MD 4526'
INC 7.7°
AZI 230.3°
TVD 4509.60'

SLTYSH: lt gy - m gybrn, sme dk gy,
mod firm - firm, brit ip, sbply - sbbly,
sme ply, sl gt tex, arg-sly mtz, w/
dism pyr, v sl calc

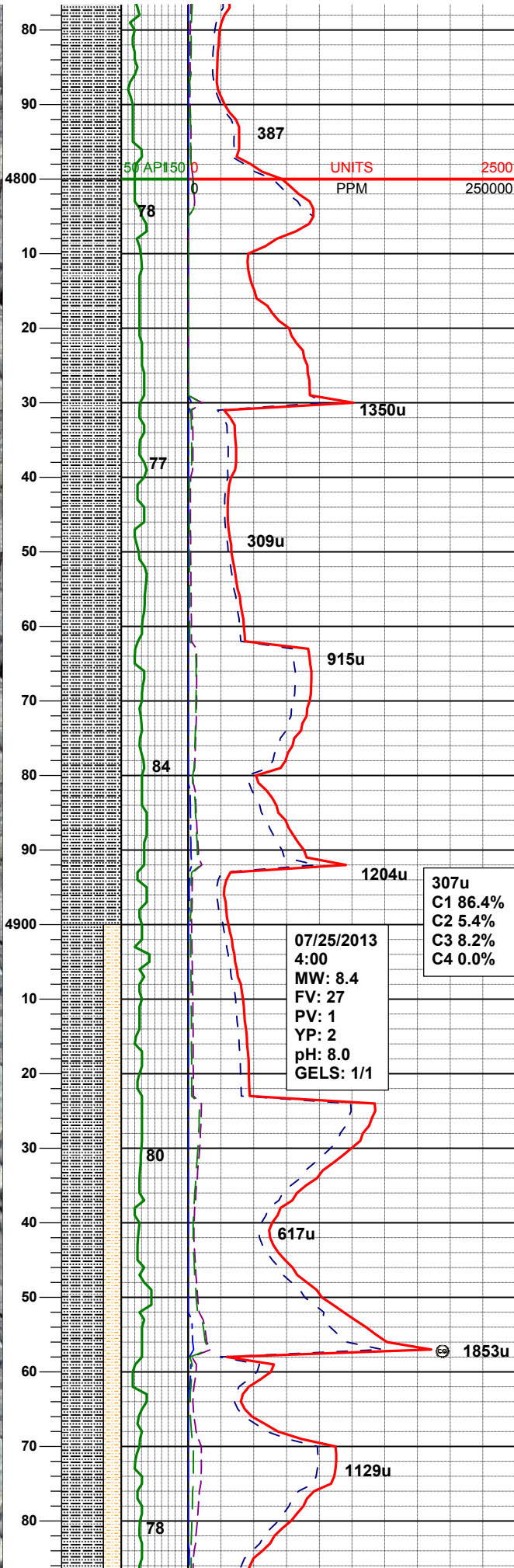
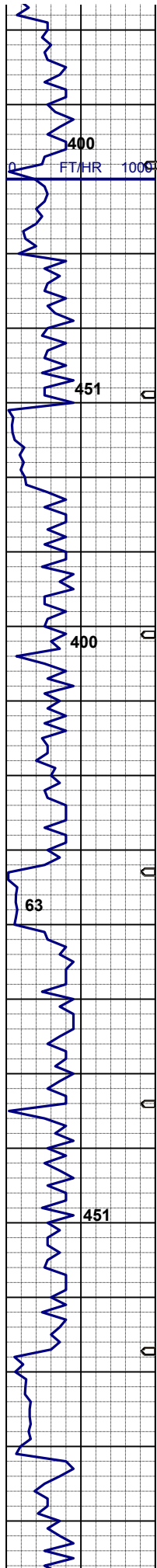


SURVEY @
MD 4621'
INC 8.9°
AZI 216.4°
TVD 4603'

SLTYSH: lt gy - m gybrn, sme dk gy,
mod firm - firm, brit ip, sbply - sbblky,
sme pty, sl gt tex, arg-sly mtz, w/
dism pyr, v sl calc

SURVEY @
MD 4715'
INC 7.5°
AZI 218.4°
TVD 4696.64'

SLTYSH: lt gy - m gybrn, sme dk gy,
mod firm - firm, brit ip, sbply - sbblky,
sme ply, sl gt tex, arg-sly mtz, w/
dism pyr, v sl calc



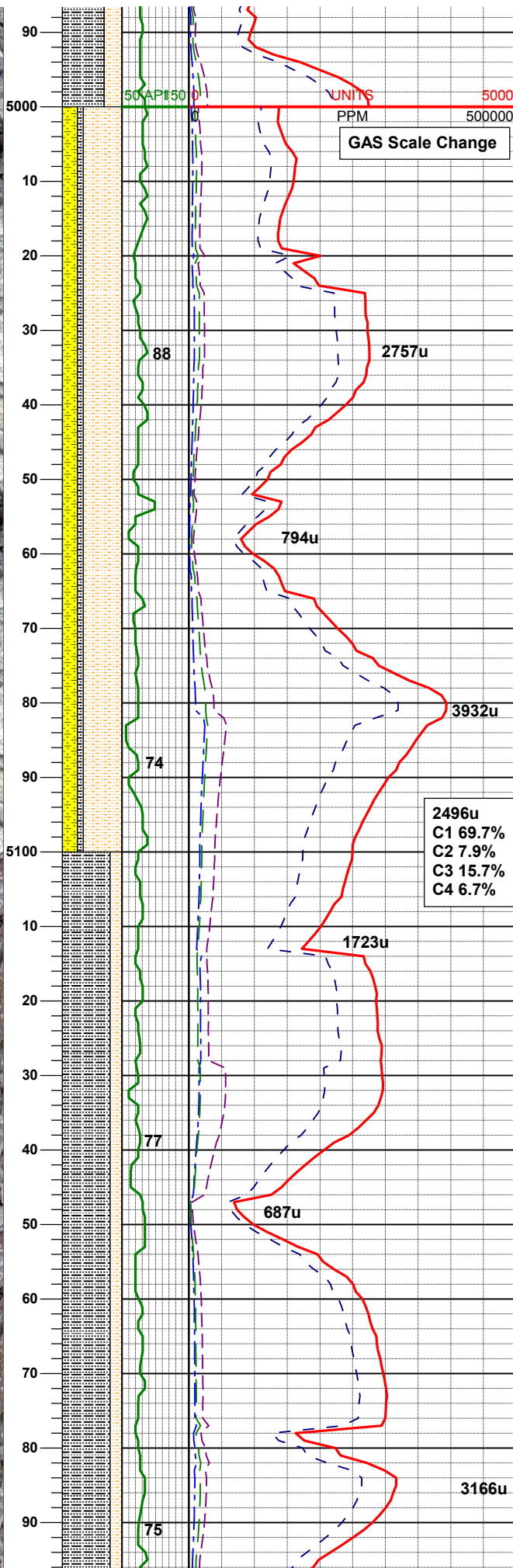
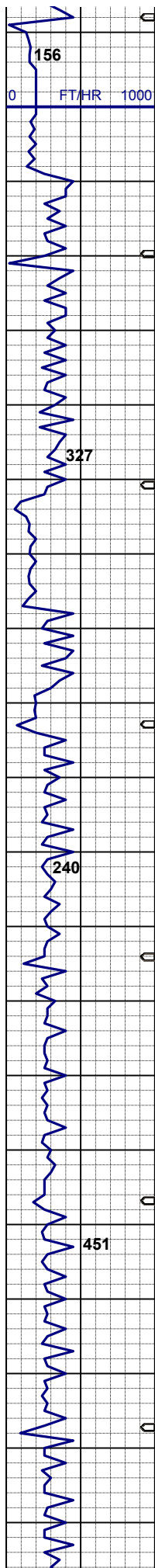
SURVEY @
MD 4810'
INC 5.5°
AZI 210.6°
TVD 4791.03'

SLTYSH: lt gy - m gybrn, sme dk gy,
mod firm - firm, brit ip, sbplty - sbbkly,
sme plty, sl gt tex, arg-slty mtz, w/
dism pyr, v sl calc

SURVEY @
MD 4905'
INC 5.4°
AZI 200.8°
TVD 4885.60'

SLTYSH: lt gy - m gybrn, sme dk gy,
mod firm - firm, brit ip, sbplty - sbbkly,
sl gt tex, arg-slty mtz, w/ dism pyr, v sl
calc; SHYSLTST: lt gy - m gy brn, sdy
ip, vf-f gr, sbang - sbrd - sbplty, gt tex,
arg-slty mtz, w srt, m sft - firm, fri -
brit, sl calc, tr dul yelgn mnrl flr, slow.
diffuse dul bl wh cut, n stn or od

MUD WT: 8.4 VIS: 28 IN
MUD WT: 8.4 VIS: 28 OUT



**SURVEY @
MD 5000'
INC 5.3°
AZI 221.2°
TVD 4980.20'**

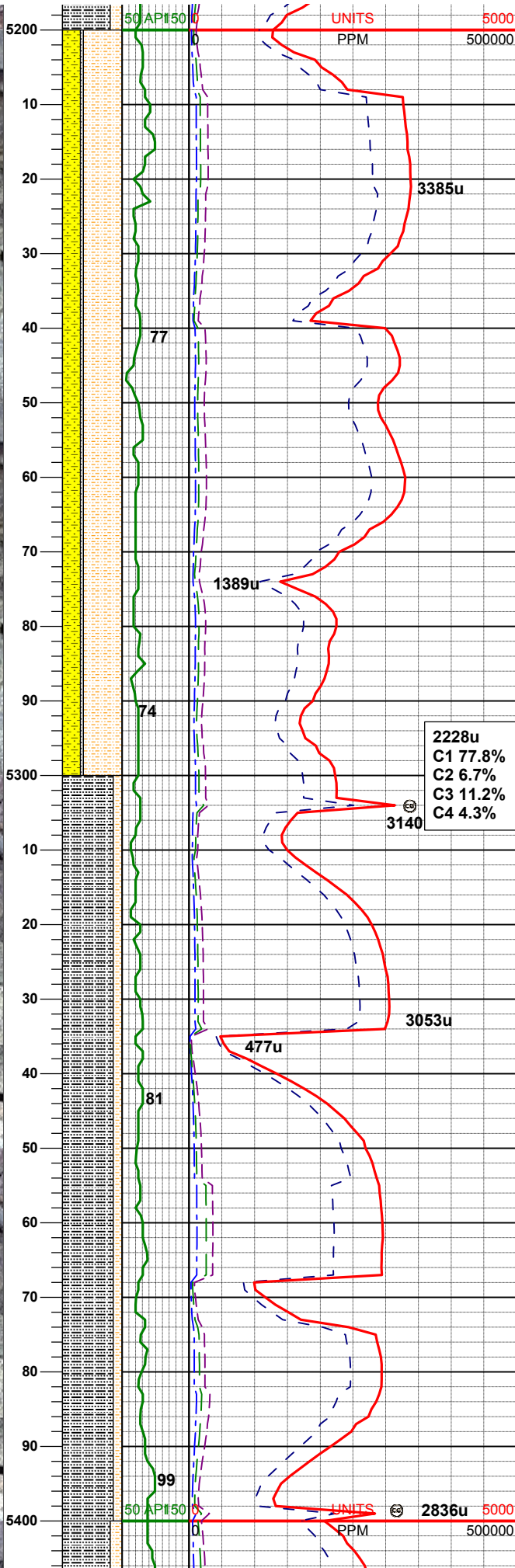
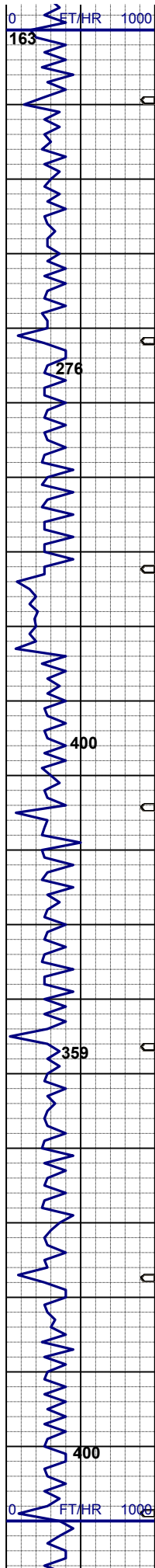
SHYSLTST: lt gy - m gy brn, sdy ip, vf
-f gr, sbang - sbrd - sbply, sdy ip, gt
tex, arg-sly mtx, w srt, mod - firm,
brit, sl calc, SHYSS: lt gy - lt gybrn,
wh, clr - trsl gr, sl s&p ip, pred mod
firm - occ sft, brit, vf - f gr, sbrd -
sbang, mod srt, sbbly - bly, occ sly
sh, tr dul blgn mnrl flr, slow. diffuse
dull bl wh cut, cut stn or od

**SURVEY @
MD 5095'
INC 6.5°
AZI 225.1°
TVD 5074.69'**

MUD WT: 8.4 VIS: 27 IN
MUD WT: 8.4 VIS: 28 OUT

SLTYSH: lt gy - m gybrn, sme dk gy,
firm, brit, sbply - sbblky, sl gt tex, arg-
slyt mtx, w/ dism pyr, v sl calc;
SHYSLTWT: lt gyd - m gy brn, sdy ip, vf
-f gr, sbang - sbdr - sbply, gt tex, arg-
slyt mtx, w srl, m sft - firm, fri - brit, sl
calc, tr dul vel onrg mnrl flr, slow.
diffuse dull bl wh cut, n stn or od

SURVEY @
MD 5190'
INC 5.5°
AZI 219.6°
TVD 5169.17'



Logger's Top Shannon
@ 5206' MD / 5185' TVD

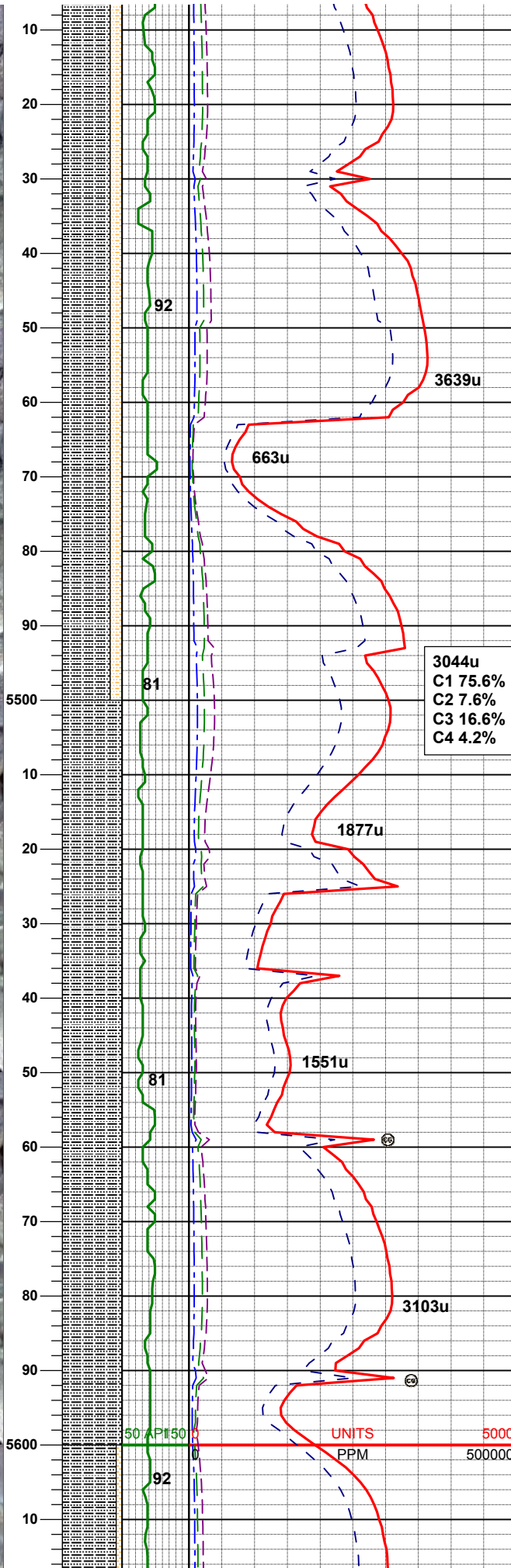
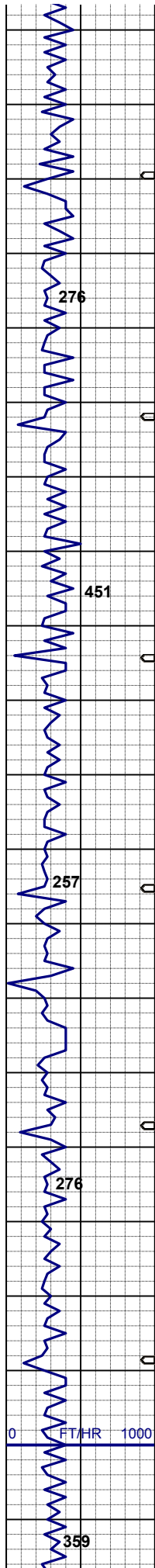
SHYSLTST: lt gy - m gy brn, sdy ip, vf
-f gr, sbang - sbrd - sbply, sdy ip, gt
tex, arg-sly mtz, w srt, mod - firm,
brit, sl calc, spec w/ mica frag,
SHYSS: lt gy - lt gybrn, wh, clr - trnsl
gr, sl s&p ip, pred mod firm - occ sft,
brit, vf - f gr, sbrd - sbang, mod srt,
sbbly - bly, occ sly sh, mod fast
diffuse mod bl wh cut, n flor stn or od

SURVEY @
MD 5285'
INC 5.9°
AZI 219.4°
TVD 5263.7'

MUD WT: 8.4+ VIS: 29 IN
MUD WT: 8.4+ VIS: 28 OUT

SLTYSH: lt gy - m gybrn, sme dk gy,
firm, brit, sbply - sbbly, sl gt tex, arg-
sly mtz, w/ diss pyr, v sl calc;
SHYSLTST: lt gy - m gy brn, sdy ip, vf
-f gr, sbang - sbrd - sbply, gt tex, arg-
sly mtz, w srt, m sft - firm, fri - brit, sl
calc, mod fast diffuse mod bl wh cut,
n flor stn or od

SURVEY @
MD 5379'
INC 5.5°
AZI 217.5°
TVD 5357.24'



SLTYSH: lt gy - m gybrn, sme dk gy, firm, brit, sbply - sbbly, sl gt tex, arg-slty mtz, w/ dism pyr, v sl calc;
SHYSLTST: lt gy - m gy brn, sdy ip, vf -f gr, sbang - sbrd - sbply, gt tex, arg-slty mtz, w srt, m sft - firm, fri - brit, sl calc, sl tr fos frag, mod fast diffuse dull bl wh cut, n flr stn or od

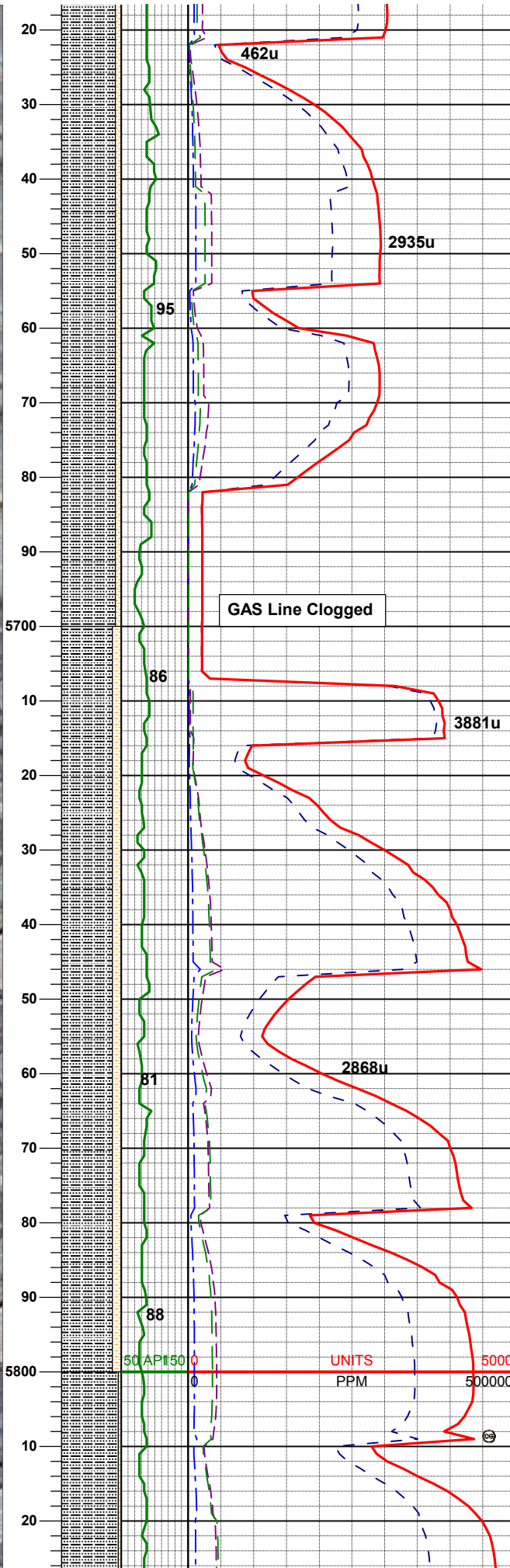
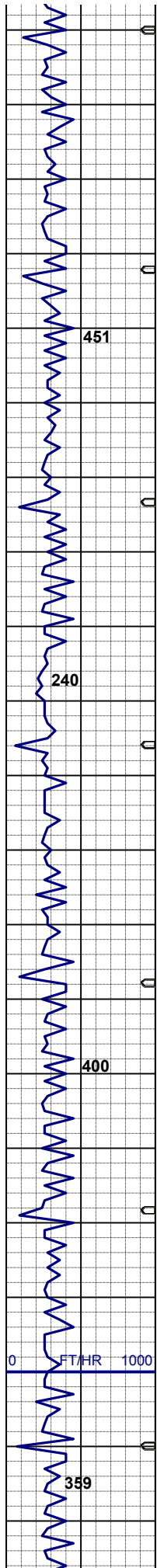
SURVEY @
MD 5474'
INC 4.6°
AZI 210.8°
TVD 5451.87'

3044u
C1 75.6%
C2 7.6%
C3 16.6%
C4 4.2%

MUD WT: 8.5+ VIS: 30 IN
MUD WT: 8.6 VIS: 29 OUT
SLTYSH: lt gy - m gybrn, sme dk gy, mod firm, brit, sbply - sbbly, sme pty, sl gt tex, arg-slty mtz, w/ dism pyr, v sl calc, mod fast diffuse, sl stmg, mod bri bl wh cut, n flr stn or od

SURVEY @
MD 5569'
INC 3.7°
AZI 209.8°
TVD 5546.66'

MUD WT: 8.5+ VIS: 30 IN
MUD WT: 8.6 VIS: 29 OUT



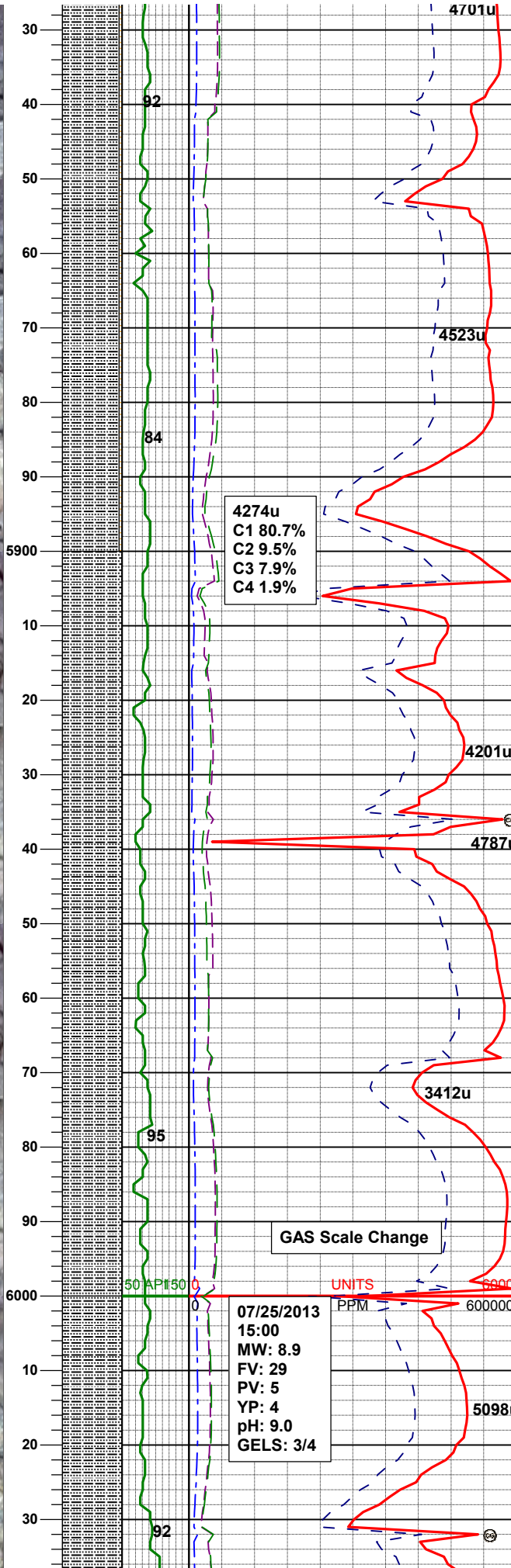
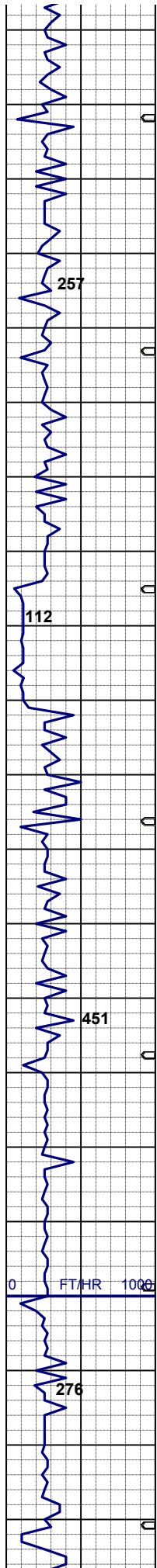
SLTYSH: lt gy - m gybrn, sme dk gy, mod firm - firm, brit, sbply - sbbkly, sme ply, sl gt tex, arg-sltly mtx, w/ dism pyr, v sl calc, occ shysltst, slow. diffuse, dull bl cut, n flor stn or od

SURVEY @
MD 5664'
INC 3.1°
AZI 208.7°
TVD 5641.49'

MUD WT: 8.6 VIS: 30 IN
MUD WT: 8.6 VIS: 29 OUT

SLTYSH: lt gy - m gybrn, sme dk gy, sft - mod firm, brit, sbply - sbbkly, sme ply, sl gt tex, arg-sltly mtx, w/ dism pyr, v sl calc, occ shysltst, slow. diffuse, dull bl cut, n flor stn or od

SURVEY @
MD 5759'
INC 2.4°
AZI 203.7°
TVD 5736.38'



SLTYSH: lt gy - m gybrn, sme dk gy, sft - mod firm, brit, sbply - sbblky, sme pty, sl gt tex, arg-sity mtz, w/ dism pyr, v sl calc, occ shysltst, mod fast diffuse, sl stmg mod bri bl cut, n flr stn or od

SURVEY @
MD 5854'
INC 2.3°
AZI 199.4°
TVD 5831.3'

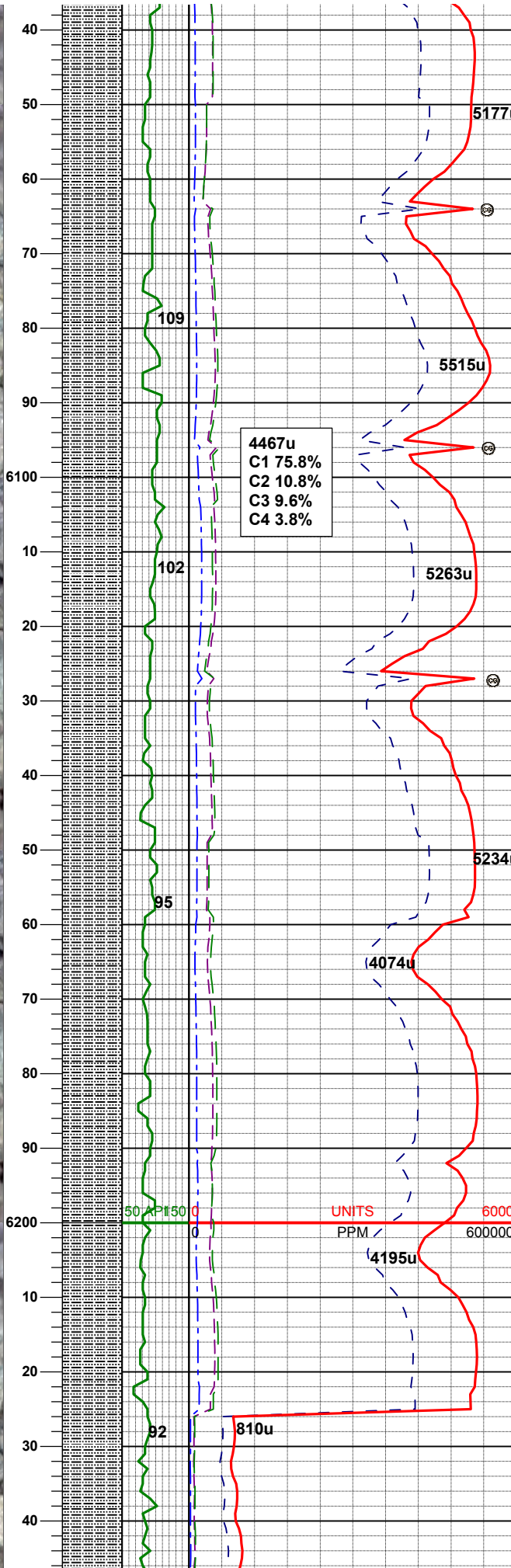
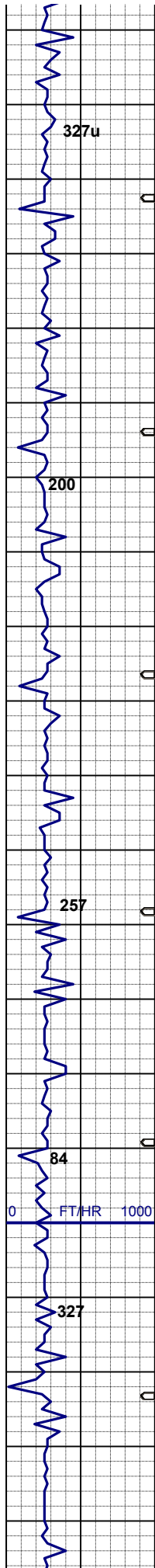
MUD WT: 8.6 VIS: 30 IN
MUD WT: 8.6 VIS: 29 OUT

SURVEY @
MD 5948'
INC 2.9°
AZI 263.6°
TVD 5925.27'

SLTYSH: lt gy - m gybrn, sme dk gy, sft - mod firm, brit, sbply - sbblky, sme pty, sl gt tex, arg-sity mtz, w/ dism pyr, v sl calc, tr shysltst, mod fast diffuse, sl stmg mod bri bl cut, n flr stn or od

MUD WT: 8.9 VIS: 30 IN
MUD WT: 8.9 VIS: 30 OUT

SURVEY @
MD 6043'
INC 0.5°
AZI 211.4°



AZI 244.9°
TVD 6020.26'

SLTYSH: lt gy - m gybrn, sme dk gy,
firm, brit, sbplty - sbblky, sme plty, sl
gt tex, arg-slty mtz, w/ dism pyr, v sl
calc, sl tr shysltst, mod fast diffuse,
stmg semi bri blwh mky cut, n flr stn
or od

Logger's Top Teepee Buttes
@ 6114' MD / 6091' TVD

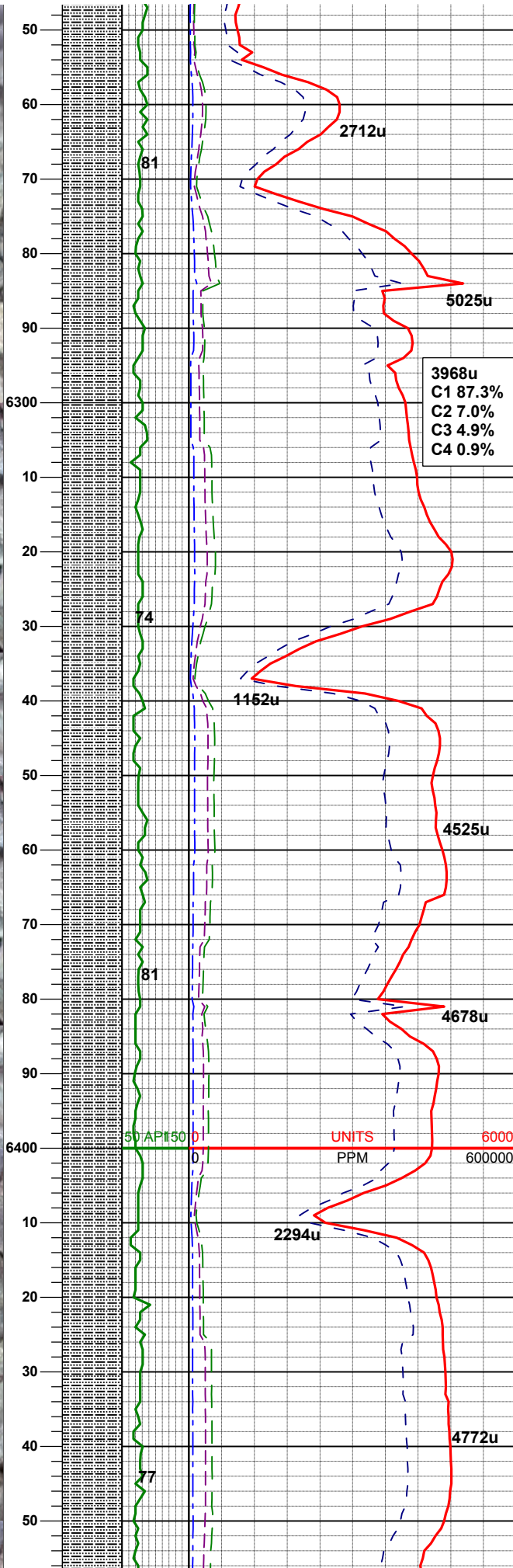
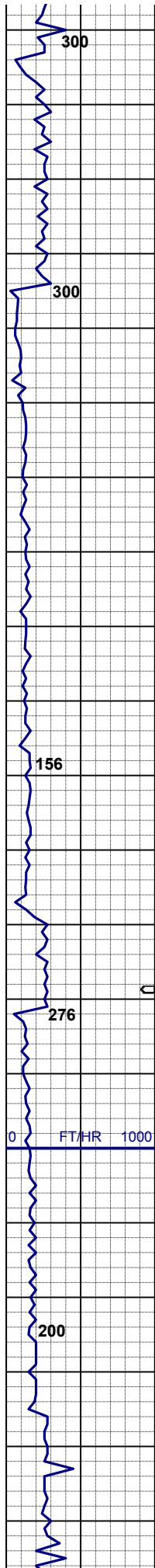
SURVEY @
MD 6138'
INC 0.4°
AZI 282.2°
TVD 6115.26'

SLTYSH: lt gy - m gybrn, sme dk gy,
sft - pred firm, brit, sbplty - sbblky, sl
gt tex, arg-slty mtz, w/ dism pyr, v sl
calc, sl tr shysltst, mod fast diffuse,
mod bri bl cut, n flr stn or od

SURVEY @
MD 6233'
INC 0.4°
AZI 339.8°
TVD 348.51'

MUD WT: 9.5 VIS: 31 IN
MUD WT: 9.5 VIS: 30 OUT

SLTYSH: lt gy - m gybrn, sme dk gy,



sft - pred firm, brit, sbpity - sbblky, sl
gt tex, arg-slty mtz, w/ dism pyr, v sl
calc, sl tr shysltst, mod fast diffuse,
mod bri bl cut, n flor stn or od

**Begin Building Curve
@ 6312' MD**

**SURVEY @
MD 6328'
INC 5.5°
AZI 181.3°
TVD 6305.12'**

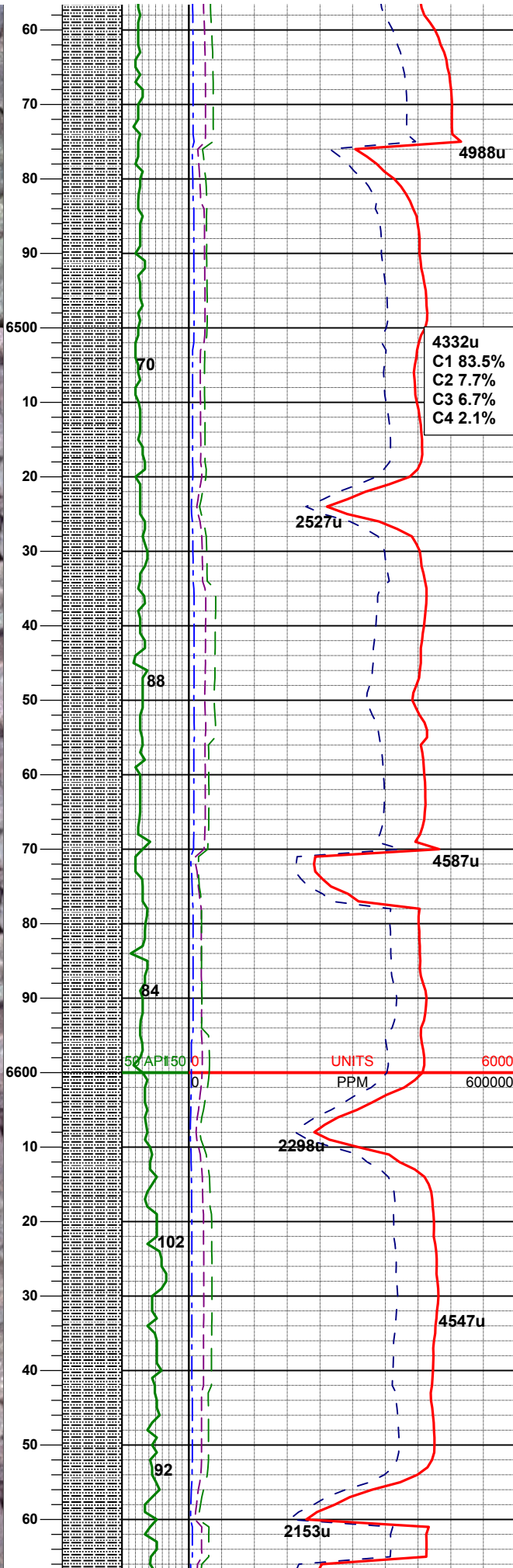
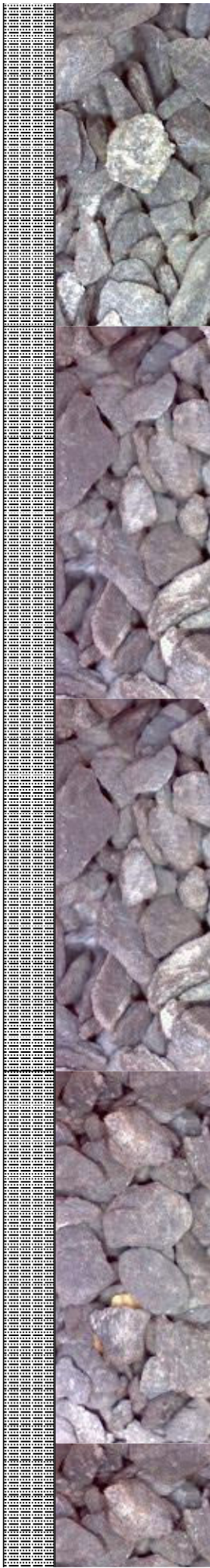
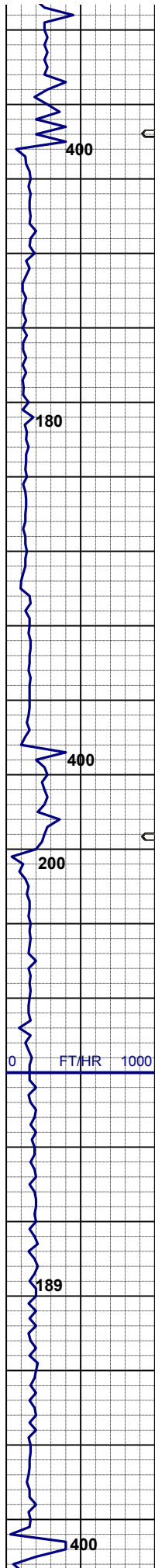
**MUD WT: 9.4 VIS: 29 IN
MUD WT: 9.3+ VIS: 29 OUT**

SLTYSH: lt gy - m gybrn, sme dk gy,
sft - pred firm, brit, sbpity - sbblky, sl
gt tex, arg-slty mtz, w/ dism pyr, v sl
calc, sl tr shysltst, mod fast diffuse,
mod bri bl cut, n flor stn or od

**SURVEY @
MD 6423'
INC 13.9°
AZI 185.2°
TVD 6398.68'**

**MUD WT: 9.7 VIS: 32 IN
MUD WT: 9.6 VIS: 31 OUT**

SLTYSH: lt gy - m gybrn, sme dk gy,
sft - pred firm, brit, sbpity - sbblky, sl
gt tex, arg-slty mtz, w/ dism pyr, v sl
calc, sl tr shysltst, mod fast diffuse,
mod bri bl cut, n flor stn or od



SURVEY @
MD 6517'
INC 16.1°
AZI 182.2°
TVD 6489.47'

MUD WT: 10 VIS: 32 IN
MUD WT: 9.9 VIS: 30 OUT

SLTYSH: lt gy - m gybrn, sme dk gy,
sft - pred firm, brit, sbply - sbblky, sl
gt tex, arg-silty mtx, w/ dism pyr, v sl
calc, sl tr shysltst, mod fast diffuse,
mod bri bl cut, n flor stn or od

SURVEY @
MD 6612'
INC 23.4°
AZI 183.4°
TVD 6578.82'

SLTYSH: lt gy - m gybrn, sme dk gy,
sft - pred firm, brit, sbply - sbblky, sl
gt tex, arg-silty mtx, w/ dism pyr, v sl
calc, sl tr shysltst, mod fast diffuse,
mod bri bl cut, n flor stn or od

