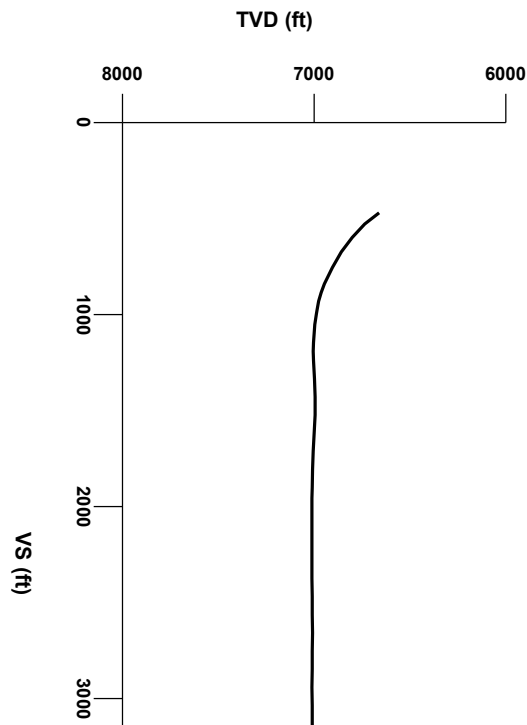




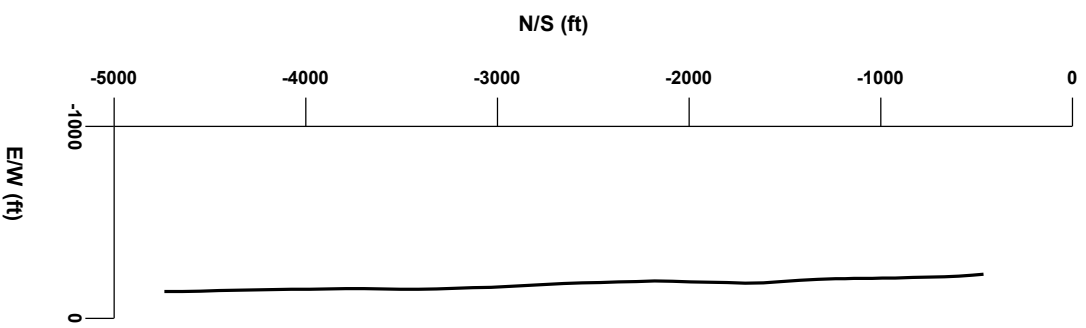
LOG created using LPLOT VH Version 3.0, July 30, 2013, Copyright (C) 1999-2009 Pason Systems Corp.

OPERATOR: NOBLE ENERGY
WELL: MOSER H27-79HN
LOCATION: SWSW SEC 22 T3N R65W
COUNTY: WELD
STATE: COLORADO
SPOT: 461' FSL, 291' FWL
ELEVATION: 4,813' GL, 4,826' KB
FIELD: WATTENBERG
SPUD DATE: 7/22/13
TD DATE: 7/30/13
DATES LOGGED: 7/23/13 - 7/30/13
DEPTHS LOGGED: 1,000' -
LOGGERS: RYAN SULLIVAN, MOHAMMED ALMUBARAK
DRILLING FLUID: H2O, LSND MUD
DRILLING RIG: ENSIGN # 121
API: 05-123-34757-00
LOG TYPE: Vertical
SCALE: 1:240 (5 inches per 100 feet)
REMARKS: Wellsite Geological Services Provided By Columbine Logging Inc.
Latitude: N40.204950, Longitude: W-104.658240



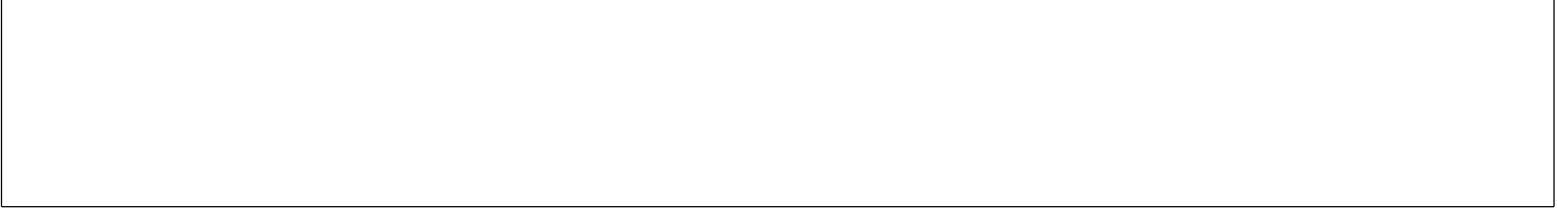
Survey Elevation

Survey Plan

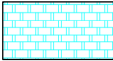



4000

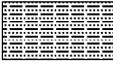
5000




LITHOLOGIES


Chalk


Marl


Silty Shale


ENGINEERING SYMBOLS


Bit Change

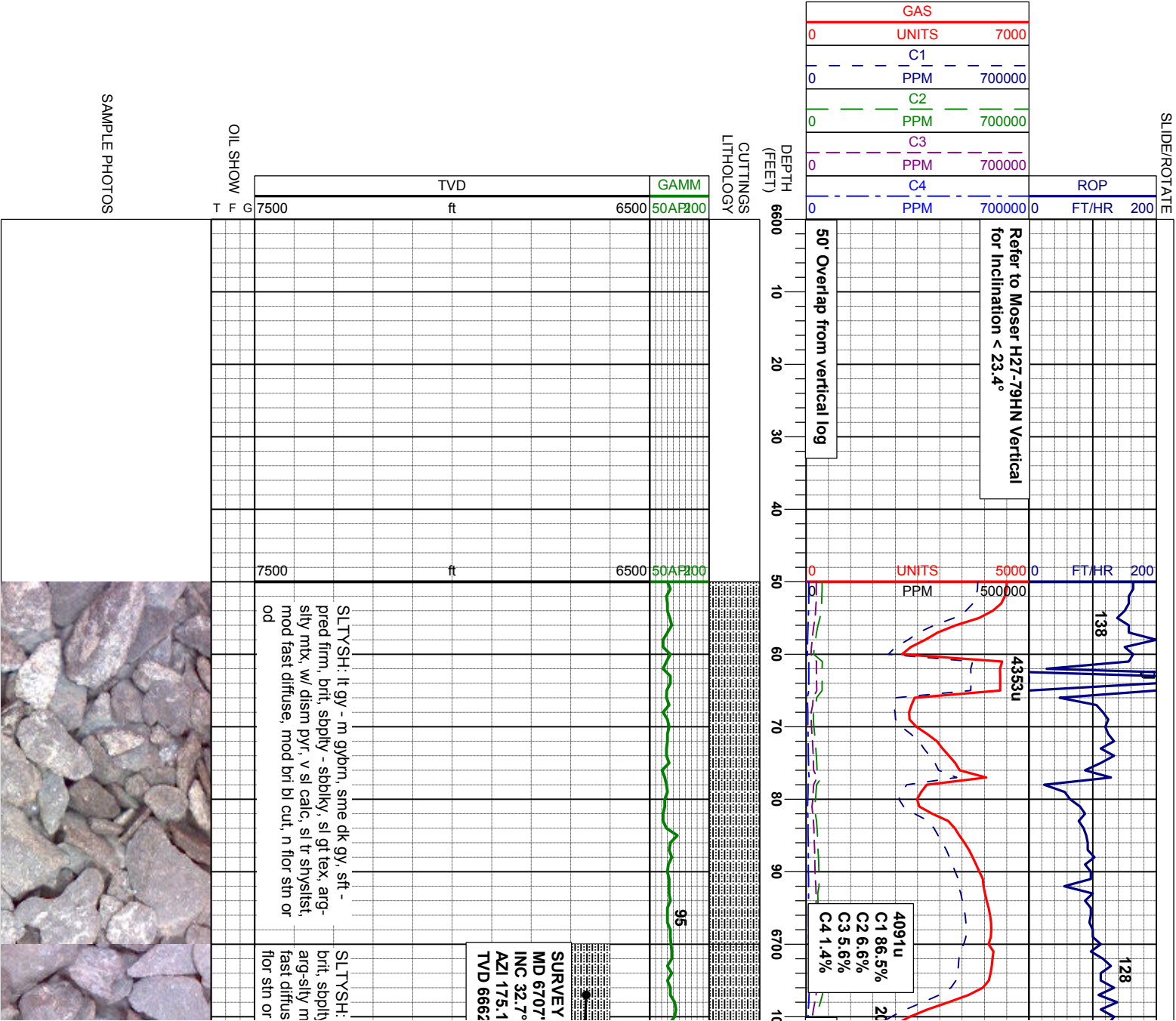
Casing

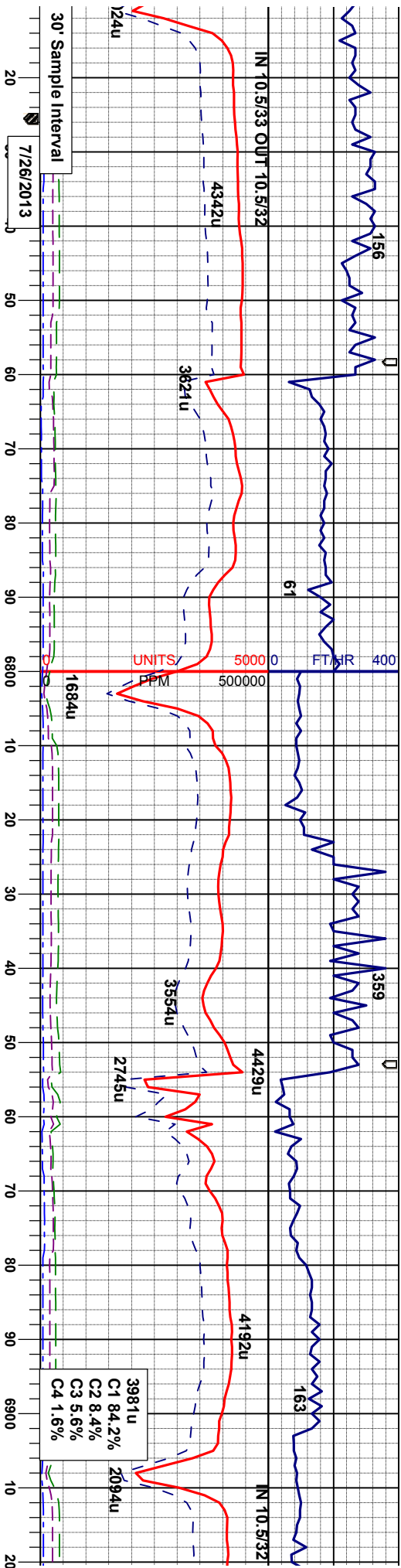
Casing

Connection

Connection Gas

Midnight Depth





Logger Top Sharon Springs
@ 6880 MD/ 6784 TVD

SURVEY @
MD 6802'
INC 44.7°
AZI 174.6°
TVD 6736.61'

SURVEY @
MD 6897'
INC 48.7°
AZI 177.6°
TVD 6801.76'

lt - m gy, sme dk gy, mod firm, sl
/- sbblky, sme sbfs, sbwxy tex,
tk, non calc, tr pyr clus, rr bent,
e, stmg, mod bri bl wh mky cut, n
od

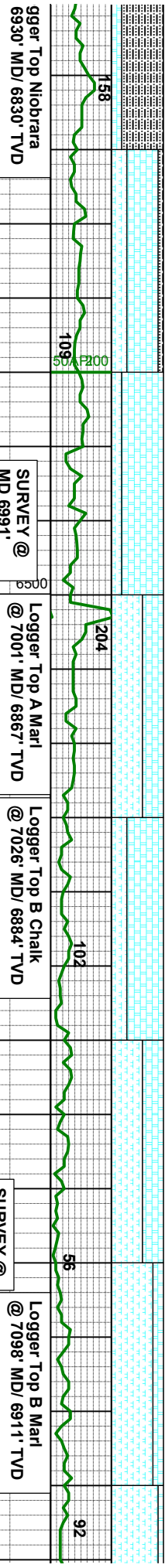
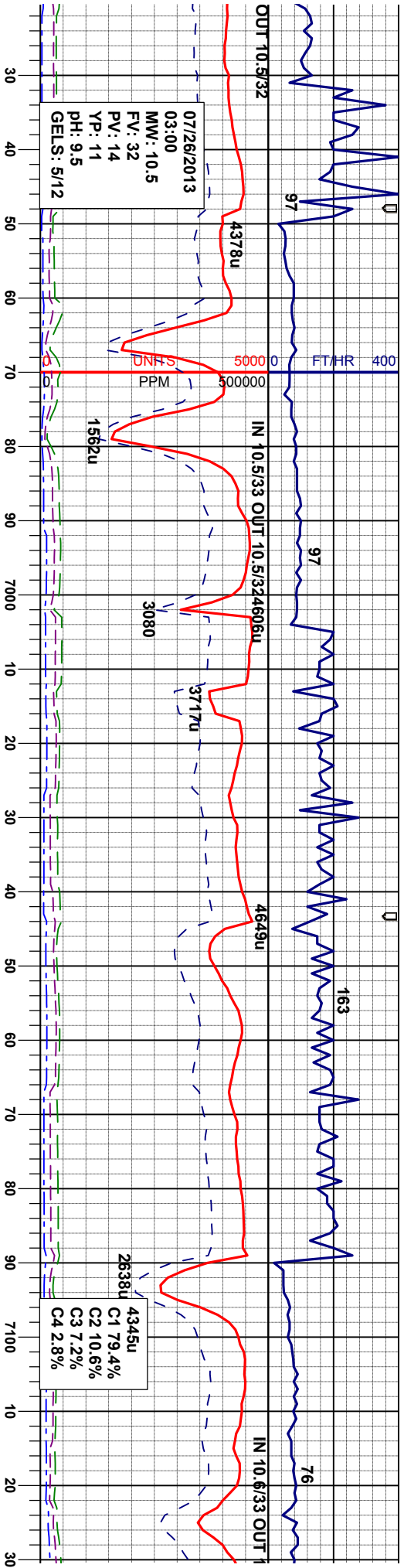
SLTYSH: lt - m gy, sme dk gy, mod firm, sl
brit, sbply - sbblky, sme sbfs, sbwxy tex,
arg-sily mtk, non calc, tr pyr clus, rr bent,
fast diffuse, stmg, mod bri bl wh mky cut, n
flor stn or od

SLTYSH: lt - m gy, sme dk gy, mod firm, sl
brit, sbply - sbblky, sme sbfs, sbwxy tex,
arg-sily mtk, non calc, tr pyr clus, rr bent,
fast diffuse, stmg, mod bri bl wh mky cut, n
flor stn or od

SLTYSH: lt - m gy, sme dk gy, mod firm, sl
brit, sbply - sbblky, sme sbfs, sbwxy tex,
arg-sily mtk, non calc, tr pyr clus, com bent,
fast diffuse, stmg, mod bri bl wh mky cut, n
flor stn or od

SLTYSH: lt - m g
brit, sbply - sbblk
arg-sily mtk, non
fast diffuse, stmg
flor stn or od





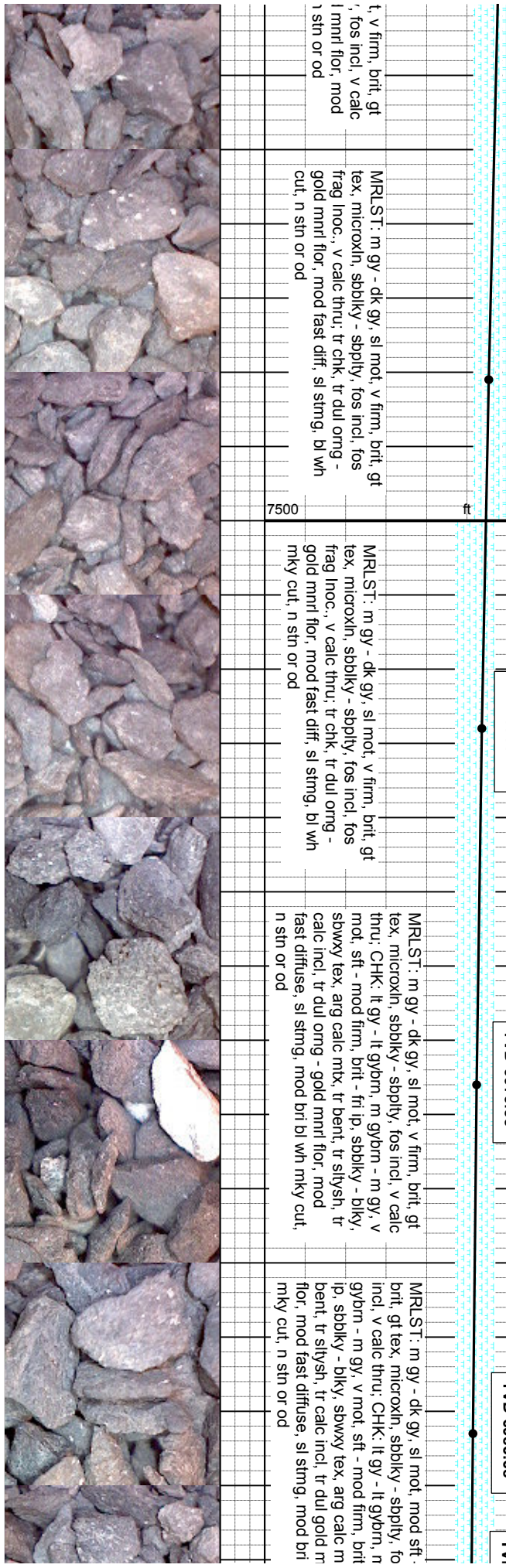
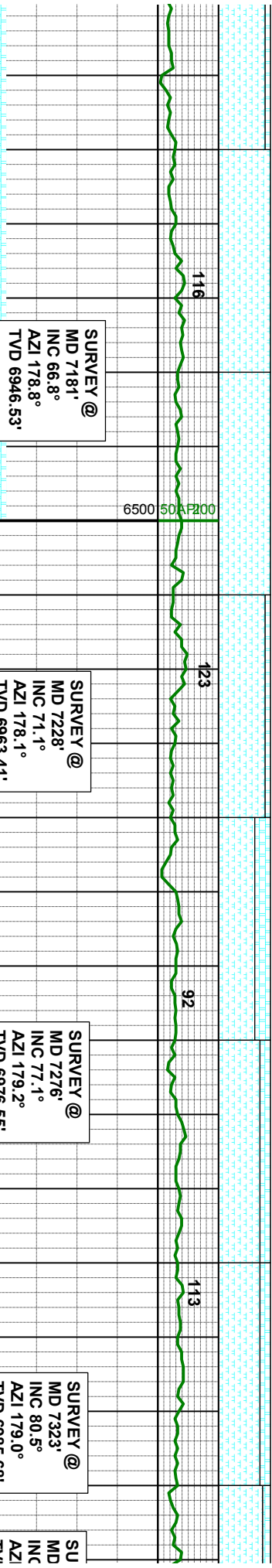
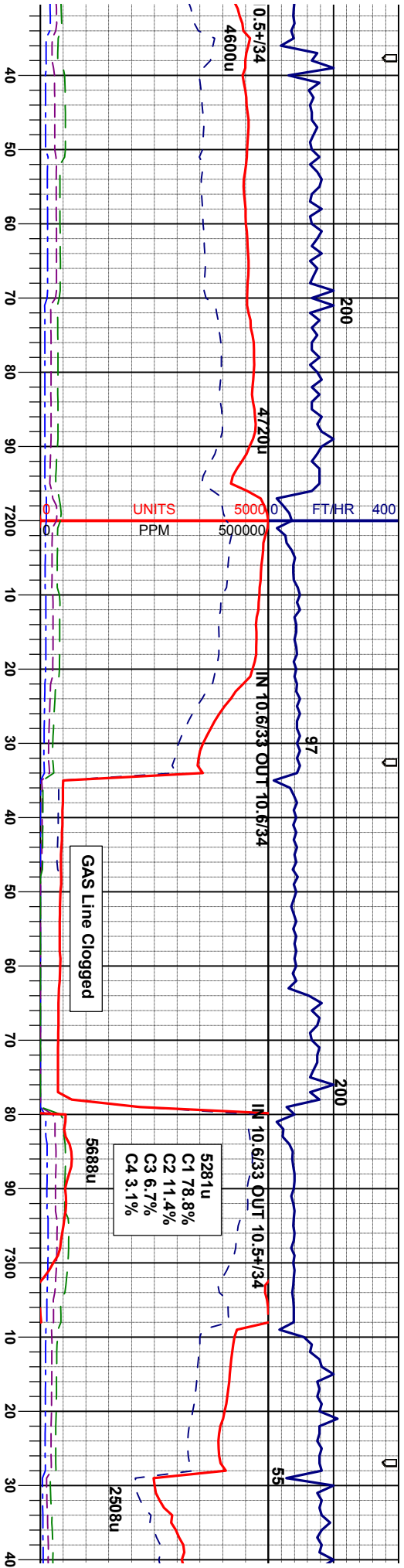
CHK: lt gy - lt gybrn, m gybrn - m gy, v mot, sft - mod firm, brt - fri ip, sbblky - blk, sbwxy tex, arg calc mtx, MRLST: m gy - dk gy, sl mot, sft - firm, brt, gt tex, microxn, sbblky - sbply, v calc thru, tr bent, tr sltsh, tr cal incl, tr dul yel - orng mnrl flr, mod fast diff, sl string, mod brt bl wh cut, n flr stn or od

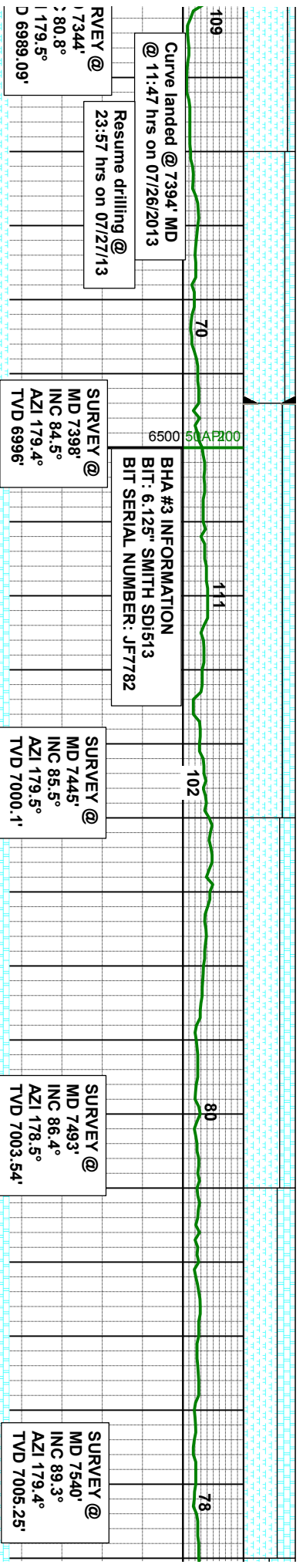
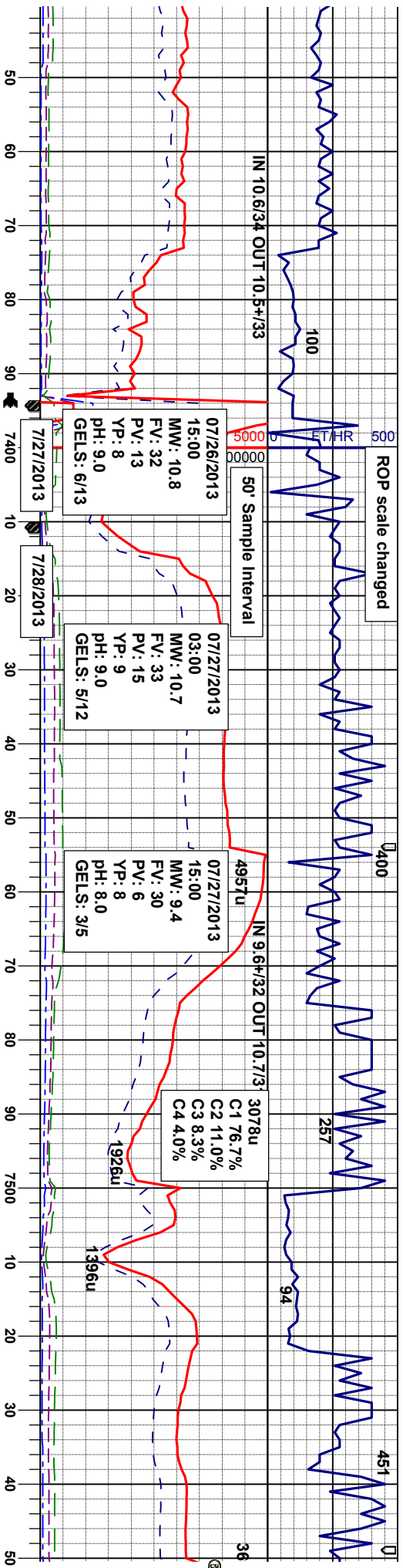
CHK: lt gy - lt gybrn, m gybrn - m gy, v mot, sft - mod firm, brt - fri ip, sbblky - blk, sbwxy tex, arg calc mtx, MRLST: m gy - dk gy, sl mot, sft - firm, brt, gt tex, microxn, sbblky - sbply, v calc thru, tr bent, tr sltsh, tr cal incl, tr dul yel - orng mnrl flr, mod fast diff, sl string, mod brt bl wh cut, n flr stn or od

MRLST: m gy - dk gy, sl mot, v firm, brt, gt tex, microxn, sbblky - sbply, fos incl, v calc thru; CHK: lt gy - lt gybrn, m gybrn - m gy, v mot, sft - mod firm, brt - fri ip, sbblky - blk, sbwxy tex, arg calc mtx, tr bent, tr sltsh, tr cal incl, tr dul orng - gold mnrl flr, slow, diff, non string, dull bl wh cut, n stn or od

MRLST: m gy - dk gy, sl mot, v firm, brt, gt tex, microxn, sbblky - sbply, fos incl, v calc thru; CHK: lt gy - lt gybrn, m gybrn - m gy, v mot, sft - mod firm, brt - fri ip, sbblky - blk, sbwxy tex, arg calc mtx, tr bent, tr sltsh, tr cal incl, tr dul orng - gold mnrl flr, slow, diff, non string, dull bl wh cut, n stn or od



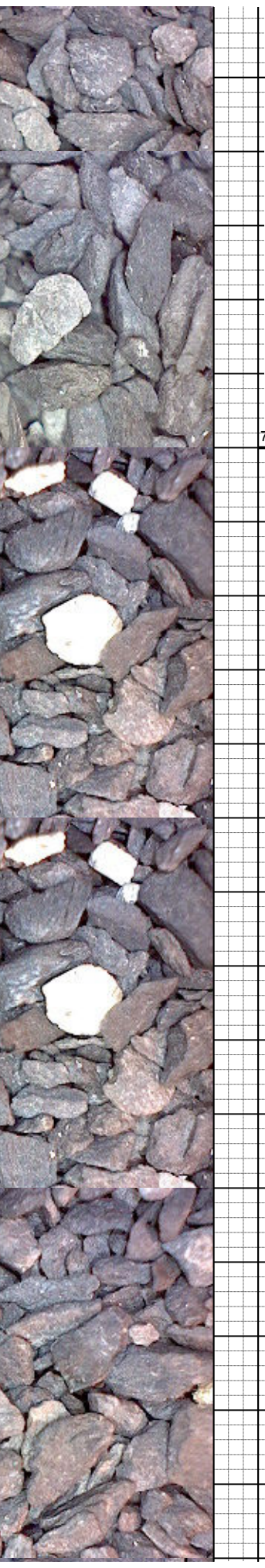


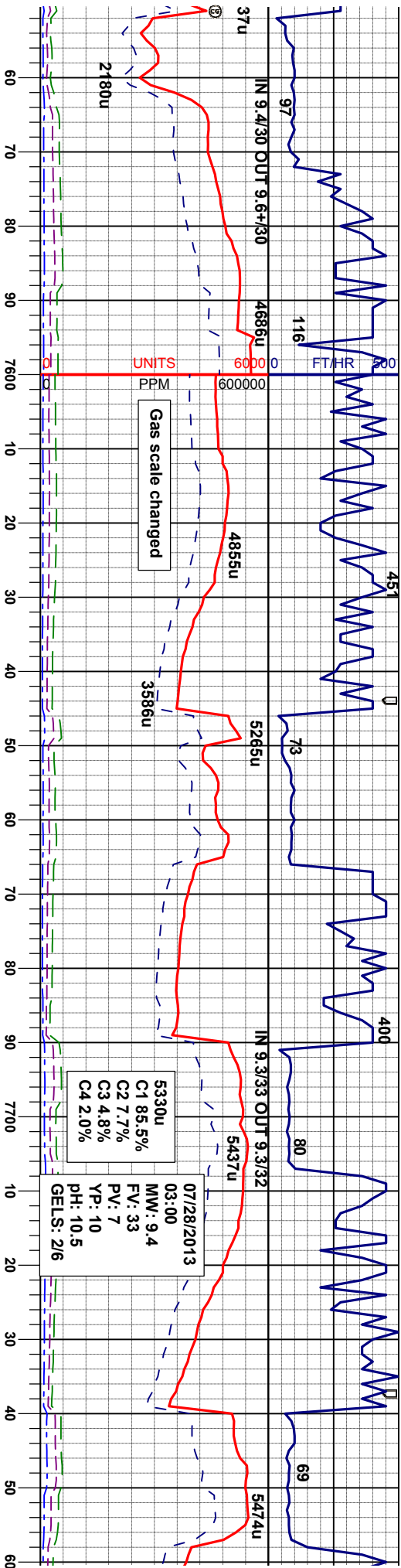


firm, bit, gt tex, microxin, sbblky - sbply, fos incl, v calc thru; CHK: lt gy - lt gybm, m gybm - m gy, v mot, sft - mod firm, brit - fri ip, sbblky - blkly, sbwxy tex, arg calc mtx, tr bent, tr sltysn, tr calc incl, tr dul gold mnt flr, mod fast diffuse, sl sting, mod bri bl wh mky cut, n stn or od

firm, bit, gt tex, microxin, sbblky - sbply, v calc, tr fos incl; CHK: lt gybm - m gybm, mot dk gy, sft - firm, brit - fri ip, sbblky - blkly, sbwxy tex, arg calc mtx, v calc, slow diffuse, sl sting, tr dul orng mnt flr, mod bri bl wh mky cut, n stn or od

firm, bit, gt tex, microxin, sbblky - sbply, v calc, tr fos; CHK: med gybm, mot dk gybm, sft - firm, brit - fri ip, sbblky - blkly, sbwxy tex, arg calc mtx, v calc, tr bent frag, tr dul orng mnt flr, slow diffuse, sl sting, mod bri bl wh mky cut, n flr stn or od





SURVEY @
MD 7588°
INC 93.4°
AZI 179.5°
TVD 7004.12

SURVEY @
MD 7682°
INC 93.1°
AZI 177.6°
TVD 6998.79°

CHK: med gybrn, mot dk gy, sft - firm, brit - fri ip, sbblky - blk, sbwxy tex - smwt gt tex, arg calc mtx, v calc w/ occ calc incl; MRLST: m - dk gyblk, sme blk, firm, brit, sl gt tex - sb wxy tex, microxin, sbblky - sbply, v calc, tr fos, tr bent, tr dul orng mntl flr, slow, diffuse, sl string, mod bri bl wh mky cut, n stn or od

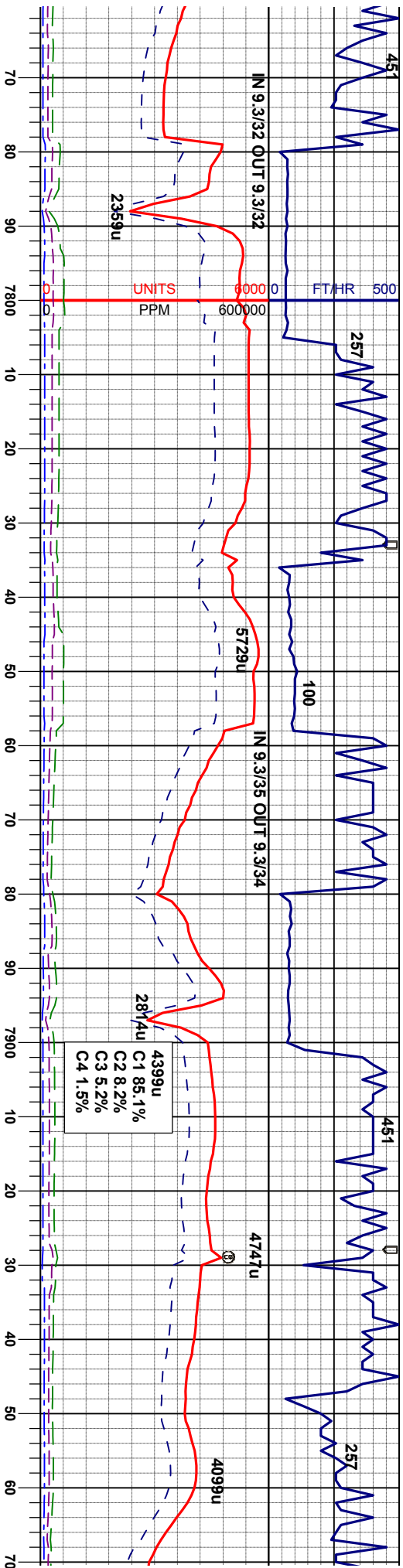
MRLST: m - dk gyblk, sme blk, firm, brit, sl gt tex - sb wxy tex, microxin, sbblky - sbply, v calc; CHK: med gybrn, mot dk gy, sft - firm, brit - fri ip, sbblky - blk, sbwxy tex - smwt gt tex, arg calc mtx, v calc w/ occ calc incl, tr fos, tr bent, tr dul orng mntl flr, slow, diffuse, sl string, mod bri bl wh mky cut, n stn or od

MRLST: dk gy - blk, mod firm, brit, sl gt tex - sb wxy tex, microxin, sbblky - sbply, v calc; CHK: m - dk gybrn, mot dk gybrn, firm, brit, sbblky - sbply, sbwxy tex, arg calc mtx, v calc, tr bent frag, tr dul orng mntl flr, slow, diffuse, sl string, mod bri bl wh mky cut, n stn or od

MRLST: dk gy - blk, mod firm, brit, sl gt tex - sb wxy tex, microxin, sbblky - sbply, v calc, tr chk, tr bent frag, tr fos frag inoc, tr dul orng mntl flr, slow, diffuse, sl string, dull bl wh mky cut, n stn or od

MRLST - sb wx calc inc frag inc sl string





SURVEY @
MD 7777'
INC 91.5°
AZI 175.7°
TVD 6994.98'

SURVEY @
MD 7872'
INC 97.5°
AZI 176.0°
TVD 6994.98'

SURVEY @
MD 7967'
INC 87.0°
AZI 176.7°
TVD 7000.

MR.LST: dk gy - blk, mod firm, brt, sl gt tex
v tex, microxln, sbblky - sbply, abnt
il, v calc, tr chk, tr bent frag, tr fos
ic, tr dul orng mnrl flor, slow, diffuse,
dull bl wh mky cut, n sin or od

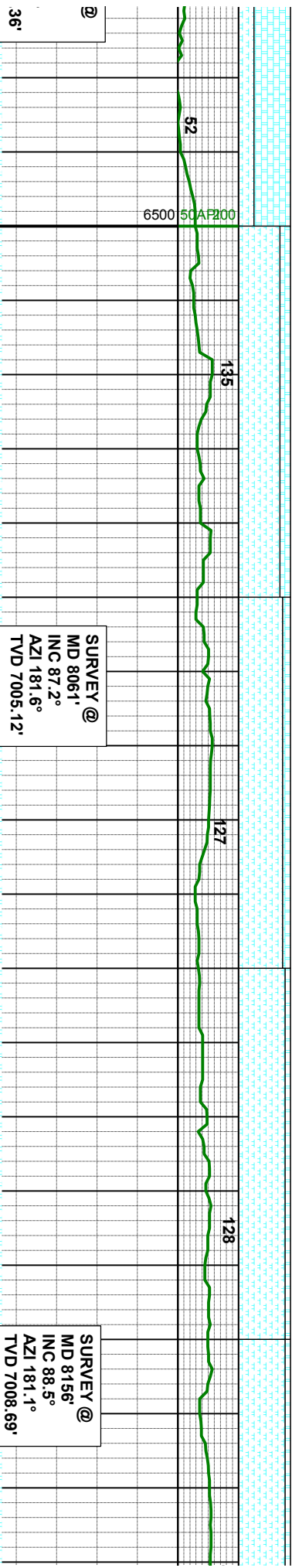
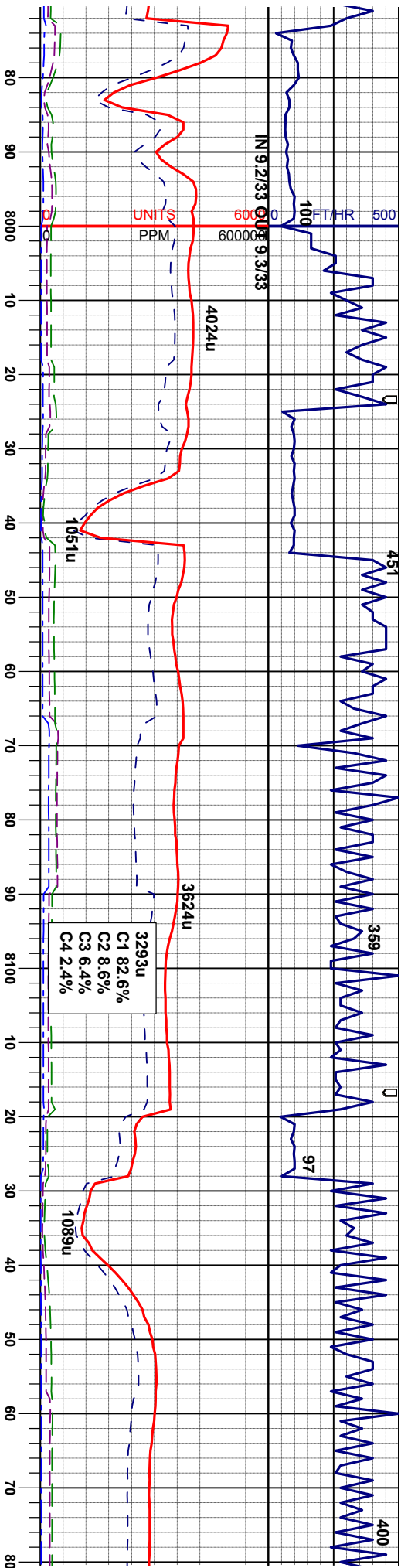
MR.LST: dk gy - blk, firm, brt, gt tex - sb
wxy tex, microxln, sbblky - sbply, dism pyr
thur, v calc, CHK: m - dk gybrn, occ mot
gybrn, v firm, brt, sbblky - sbply, sbwxy
tex, arg calc mnx, v calc, tr bent, tr dul orng
mnrl flor, mod fast diffuse, sl string, mod bri
bl wh mky cut, n sin or od

MR.LST: dk gy - blk, firm, brt, gt tex - sb
wxy tex, microxln, sbblky - sbply, dism pyr
thur, v calc, CHK: m - dk gybrn, occ mot
gybrn, v firm, brt, sbblky - sbply, sbwxy
tex, arg calc mnx, v calc, tr bent, tr dul orng
mnrl flor, mod fast diffuse, sl string, mod bri
bl wh mky cut, n sin or od

MR.LST: med gy - dk gy - blk, mod firm, brt,
gt tex - sb wxy tex, microxln, sbblky -
sbply, v calc, CHK: lt - m gy, sme m - dk
gybrn, mod hd, brt, sbblky - sbply, sbwxy
tex, arg calc mnx, v calc, tr fos frag inoc, sl
tr dul orng mnrl flor, moderate diffuse, sl
string, mod bri bl wh mky cut, n sin or od

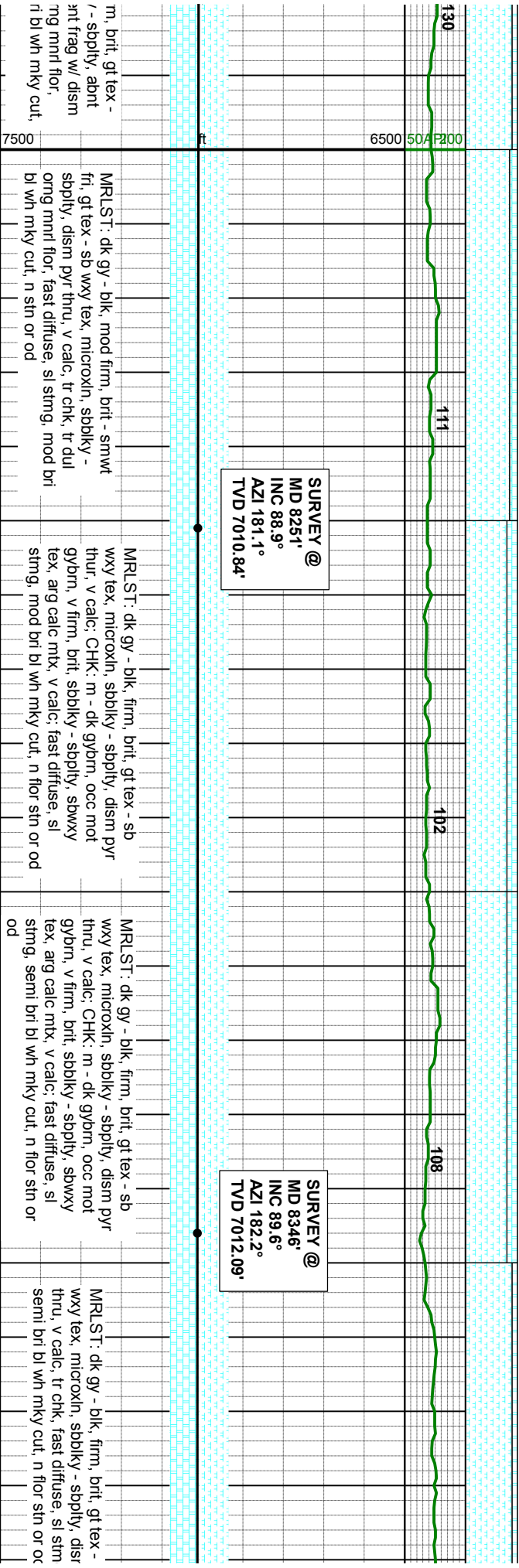
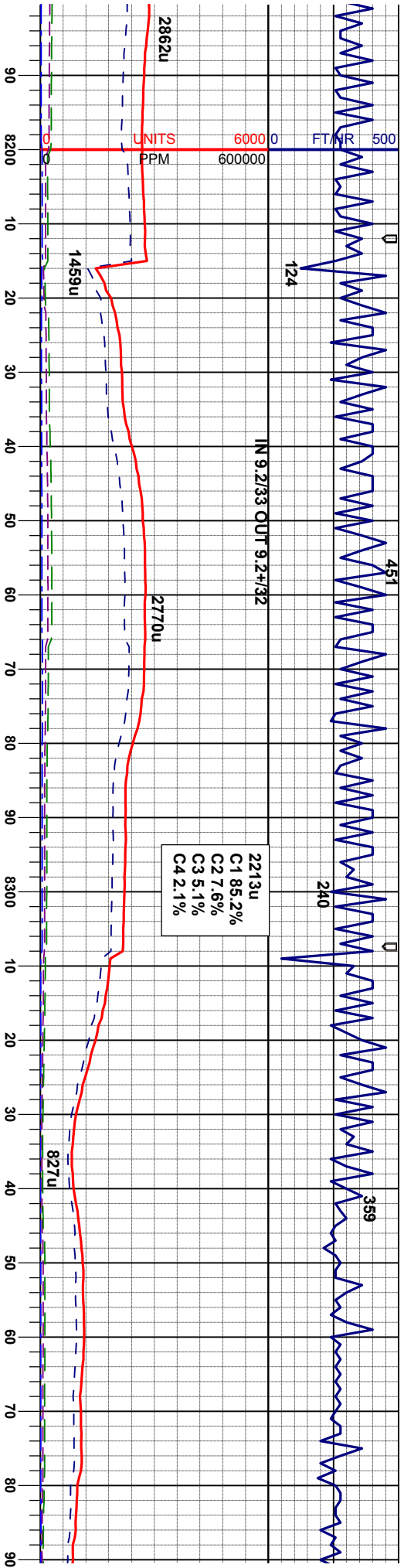
CHK: lt gy - lt gyb
sbblky - sbply, st
calc, MR.LST: me
brt, gt tex - sb wx
sbply, v calc, tr fc
mnrl flor, moderat
bl wh mky cut, n s

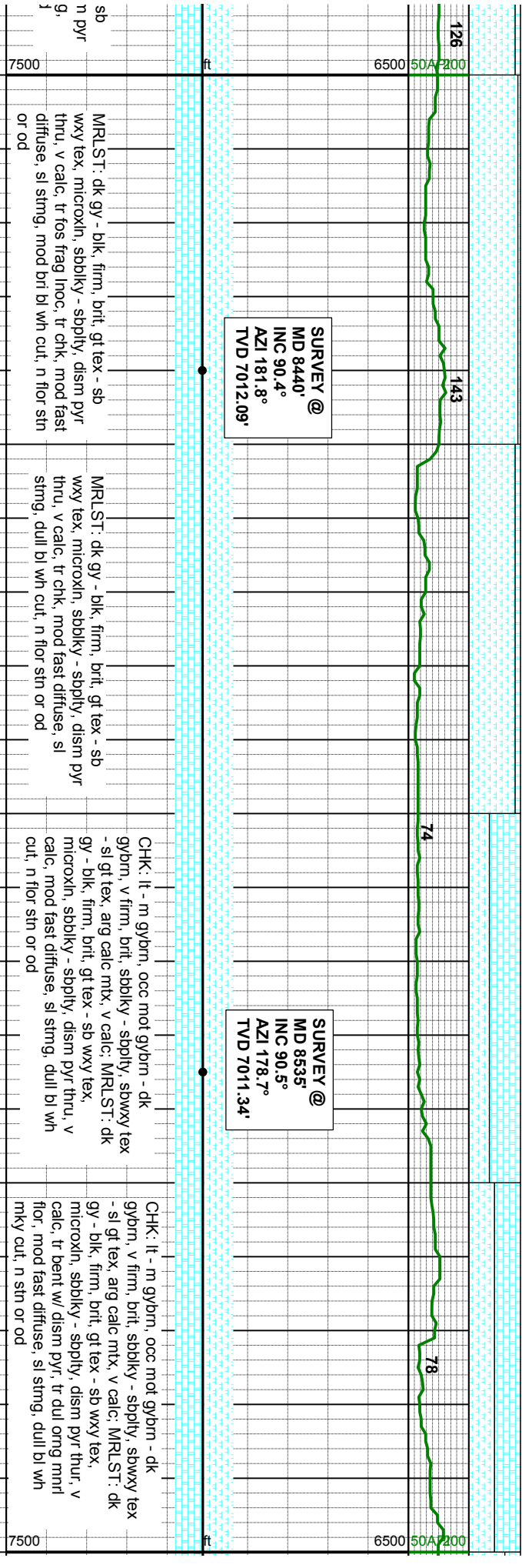
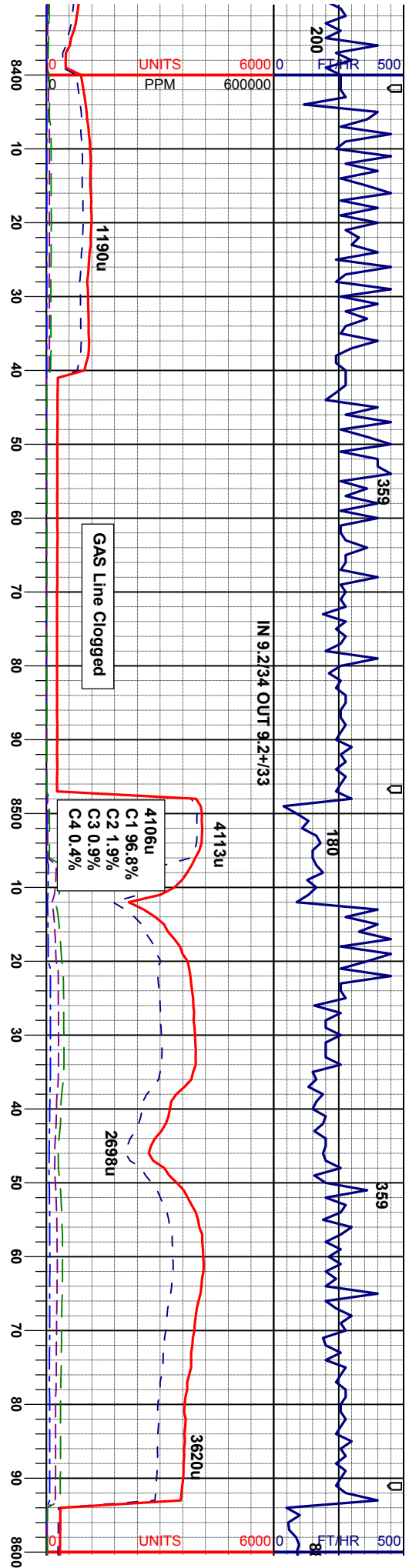


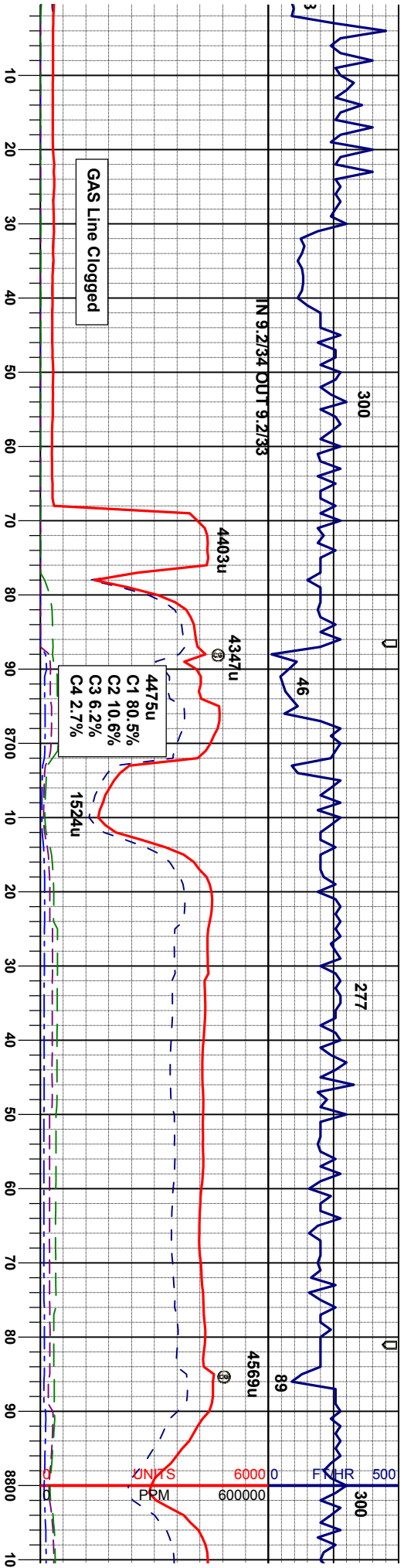


m, mot gybrn, v firm, brit, wxy tex, arg calc mtx, v dy - dk gy, mod firm, y tex, microxin, sbply - s frag incl, sl tr dul orng e diffuse, sl string, mod bri n sin or od	MR.LST: med gy - dk gy, mod firm, brit, gt tex - sb wxy tex, microxin, sbply - sbply, v calc; CHK: lt gy - lt gybrn, mot gybrn, v firm, brit, sbply - sbply, sbwxy tex, arg calc mtx, v calc; tr fos frag incl, sl tr dul orng mnrl flor, moderate diffuse, sl string, dull bign mky cut, n sin or od	MR.LST: med gy - dk gy, mod firm, brit, gt tex - sb wxy tex, microxin, sbply - sbply, v calc; CHK: lt gy - lt gybrn, mot gybrn, v firm, brit, sbply - sbply, sbwxy tex, arg calc mtx, v calc; tr fos frag incl, sl tr dul orng mnrl flor, moderate diffuse, sl string, dull bign mky cut, n sin or od	MR.LST: dk gy - blk, mod firm, brit, gt tex - sb wxy tex, microxin, sbply - sbply, abnt calc incl, v calc, tr chk, tr bent frag w/ dism pyr, tr fos frag lno, tr dul orng mnrl flor, fast diffuse, sl string, mod bri bl wh mky cut, n sin or od	MR.LST: dk gy - blk, mod fir sb wxy tex, microxin, sbply calc incl, v calc, tr chk, tr be pyr, tr fos frag lno, tr dul oi fast diffuse, sl string, mod b n sin or od
---	---	---	--	--









SURVEY @
MD 8630'
INC 90.0°
AZI 178.8°
TVD 7010.92'

SURVEY @
MD 8725'
INC 90.0°
AZI 178.5°
TVD 7010.92'

MRLST: dk gy - blk, firm, brit, gt tex - sb wxy tex, microxin, sbblky - sbply, dism pyr thru, v calc; CHK: lt - m gybrn, occ mot gybrn - dk gybrn, v firm, brit, sbblky - sbply, sbwxy tex - sl gt tex, arg calc mtx, v calc; tr du onrg mnrt flr, mod fast diffuse, sl stmg, mod bri bl wh cut, n stn or od

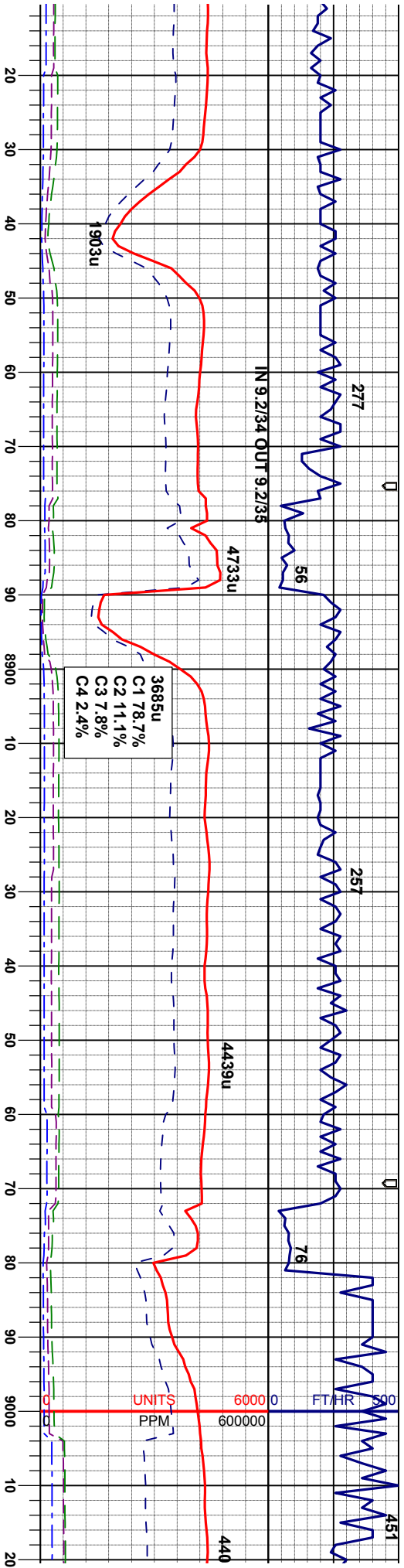
MRLST: m gy - dk gy - blk, firm, brit, gt tex - sb wxy tex, microxin, sbblky - sbply, dism pyr thru, intbd w/ fos frag Inoc, v calc; CHK: m gybrn, occ mot gybrn - dk gybrn, v firm, brit, sbblky - sbply, sbwxy tex - sl gt tex, arg calc mtx, v calc; tr du onrg mnrt flr, fast diffuse, sl stmg, dull bigy cut, n sin or od

MRLST: m gy - dk gy - blk, firm, brit, gt tex - sb wxy tex, microxin, sbblky - sbply, dism pyr thru, intbd w/ fos frag Inoc, v calc; tr chk, tr du onrg mnrt flr, fast diffuse, sl stmg, mod bri bl wh mky cut, n sin or od

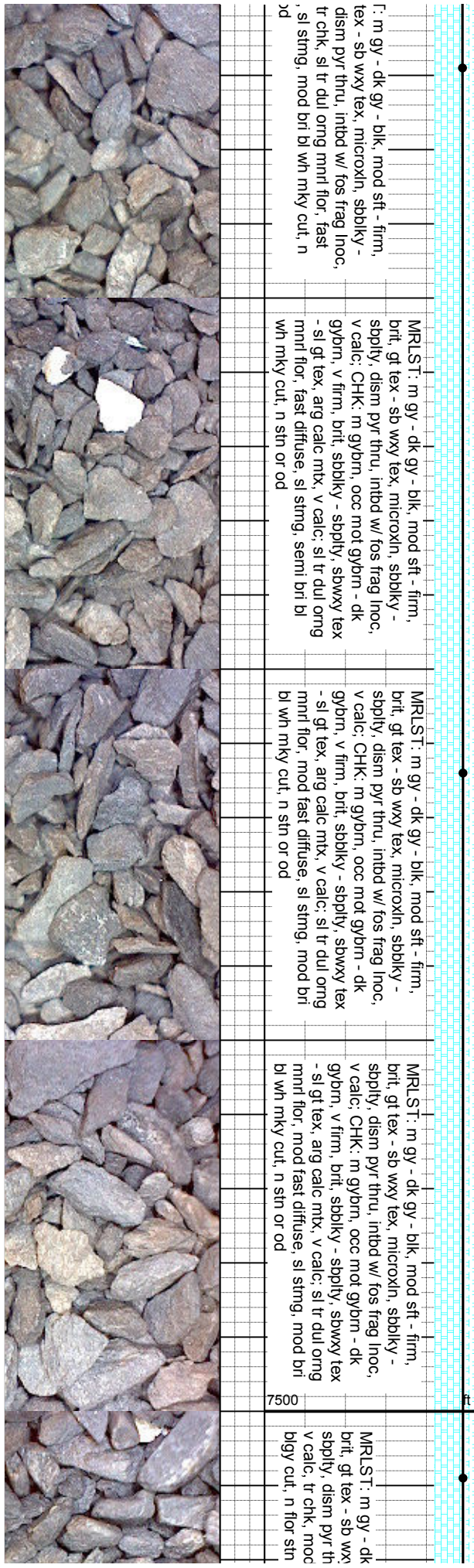
MRLST: m gy - dk gy - blk, mod sft - firm, brit, gt tex - sb wxy tex, microxin, sbblky - sbply, dism pyr thru, intbd w/ fos frag Inoc, v calc; tr chk, sl tr du onrg mnrt flr, fast diffuse, sl stmg, mod bri bl wh mky cut, n sin or od

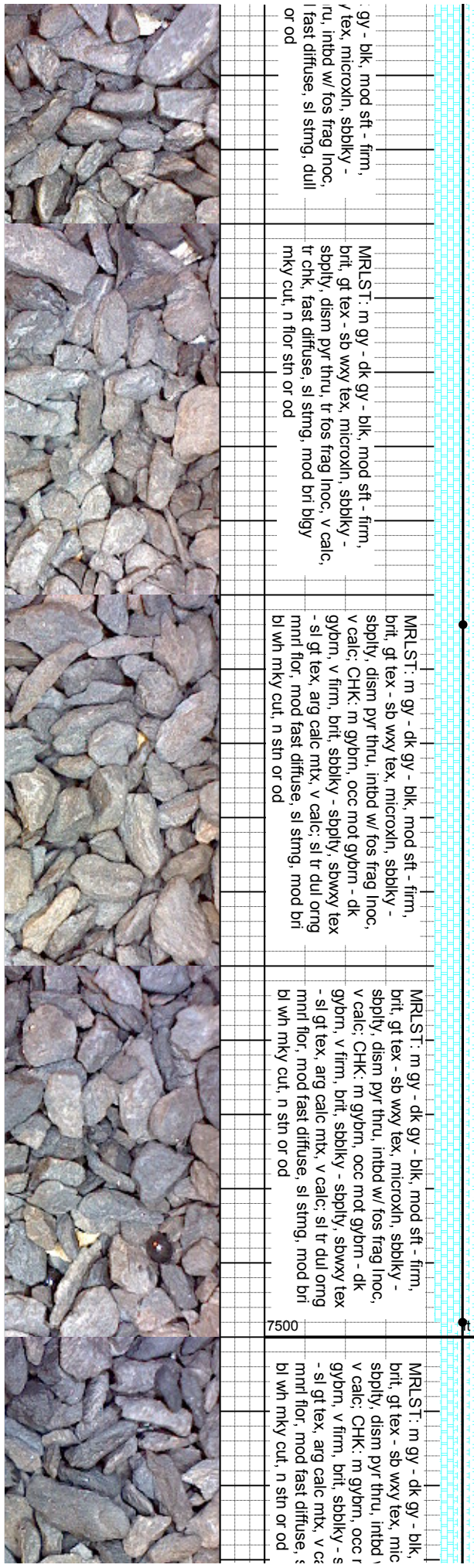
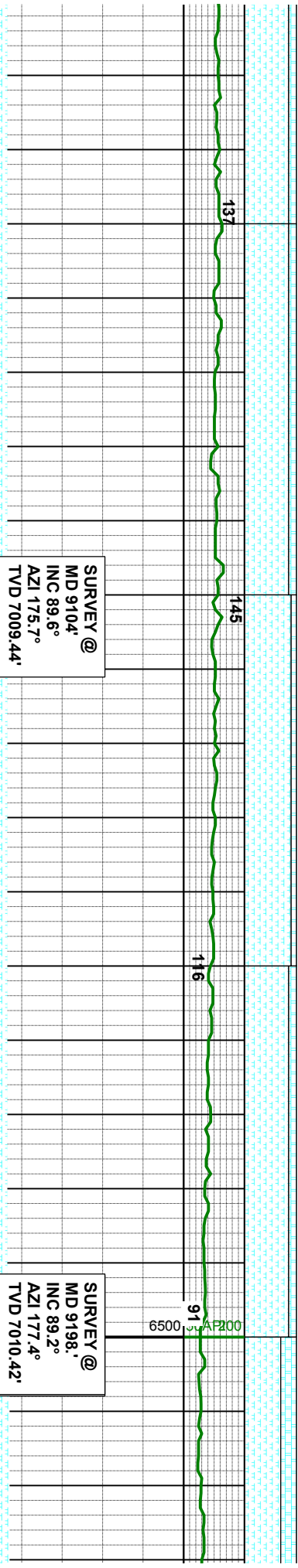
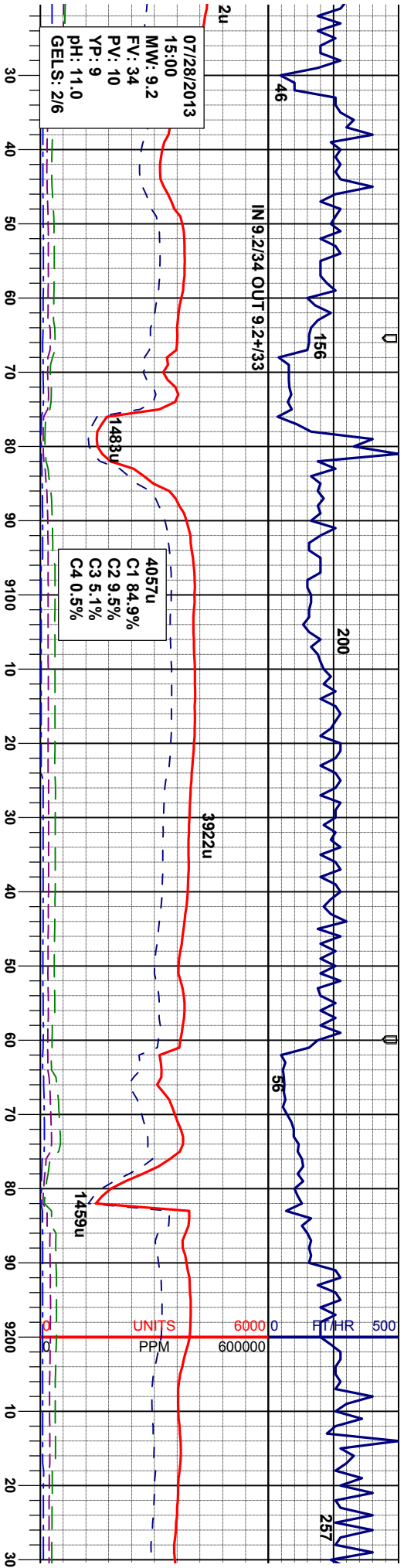
MRLST: brit, gt sbply, v calc; diffuse stn or c

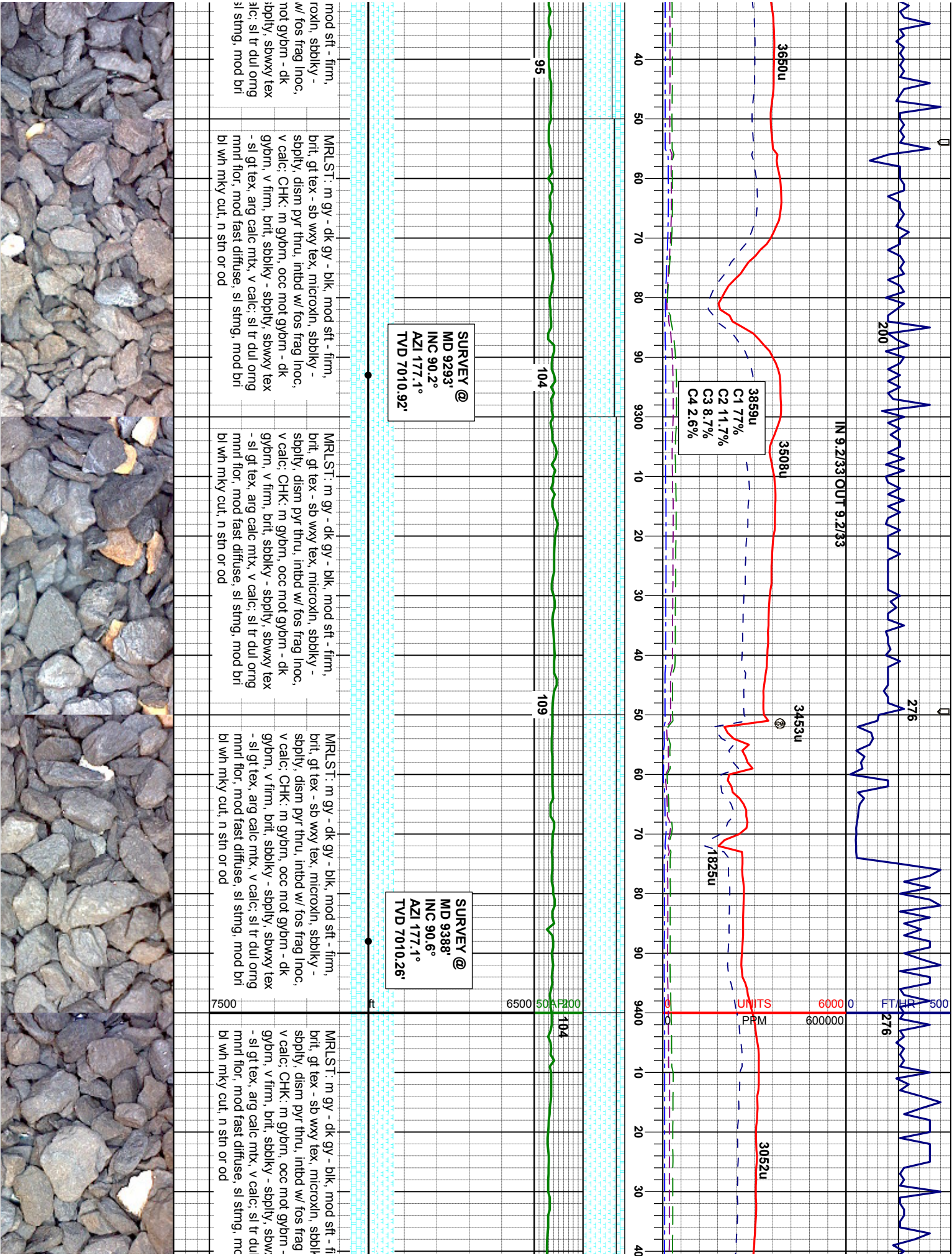


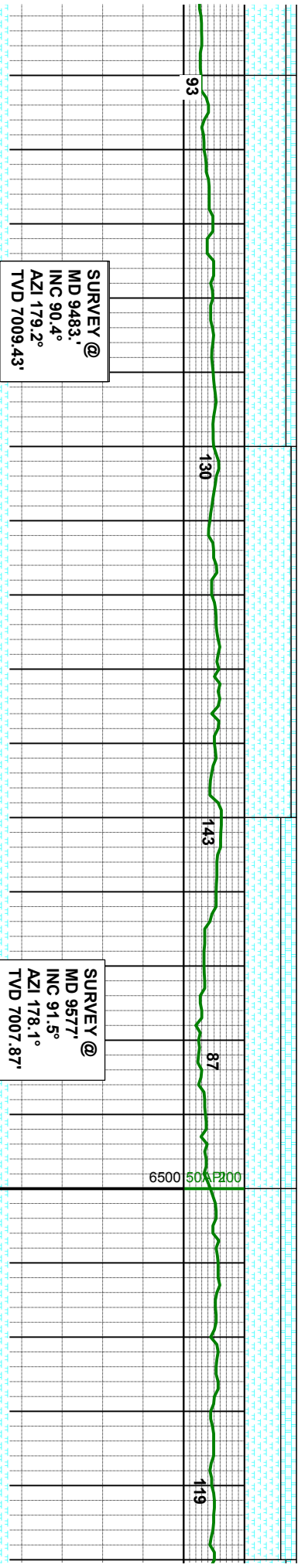
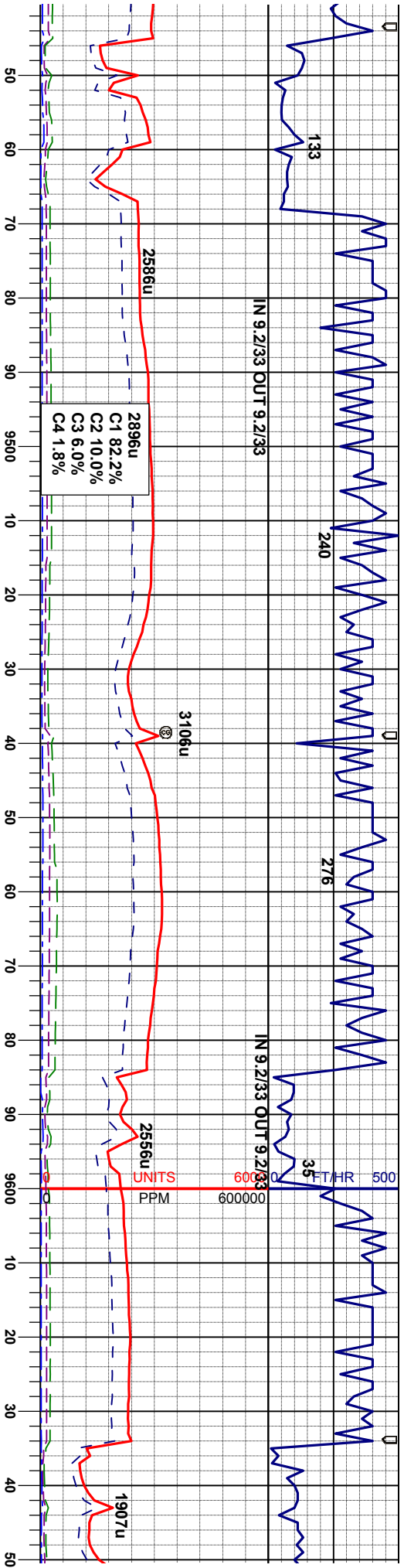


SURVEY @	MD 8839'	INC 90.7°	AZI 177.8°	TVD 7010.35'
MRLST: m gy - dk gy - blk, mod sft - firm, brit, gt tex - sb wxy tex, microxn, sbblky - sbply, disn pyr thru, intbd w/ fos frag inoc, v calc, CHK: m gybrn, occ mot gybrn - dk gybrn, v firm, brit, sbblky - sbply, sbwxy tex - sl gt tex, arg calc mtx, v calc; sl tr dul orng mnrl flor, fast diffuse, sl stmg, semi bri bl wh mky cut, n stn or od				
MRLST: m gy - dk gy - blk, mod sft - firm, brit, gt tex - sb wxy tex, microxn, sbblky - sbply, disn pyr thru, intbd w/ fos frag inoc, v calc, CHK: m gybrn, occ mot gybrn - dk gybrn, v firm, brit, sbblky - sbply, sbwxy tex - sl gt tex, arg calc mtx, v calc; sl tr dul orng mnrl flor, mod fast diffuse, sl stmg, mod bri bl wh mky cut, n stn or od				
MRLST: m gy - dk gy - blk, mod sft - firm, brit, gt tex - sb wxy tex, microxn, sbblky - sbply, disn pyr thru, intbd w/ fos frag inoc, v calc, CHK: m gybrn, occ mot gybrn - dk gybrn, v firm, brit, sbblky - sbply, sbwxy tex - sl gt tex, arg calc mtx, v calc; sl tr dul orng mnrl flor, mod fast diffuse, sl stmg, mod bri bl wh mky cut, n stn or od				
MRLST: m gy - dk gy - blk, mod sft - firm, brit, gt tex - sb wxy tex, microxn, sbblky - sbply, disn pyr thru, intbd w/ fos frag inoc, v calc, CHK: m gybrn, occ mot gybrn - dk gybrn, v firm, brit, sbblky - sbply, sbwxy tex - sl gt tex, arg calc mtx, v calc; sl tr dul orng mnrl flor, mod fast diffuse, sl stmg, mod bri bl wh mky cut, n stn or od				



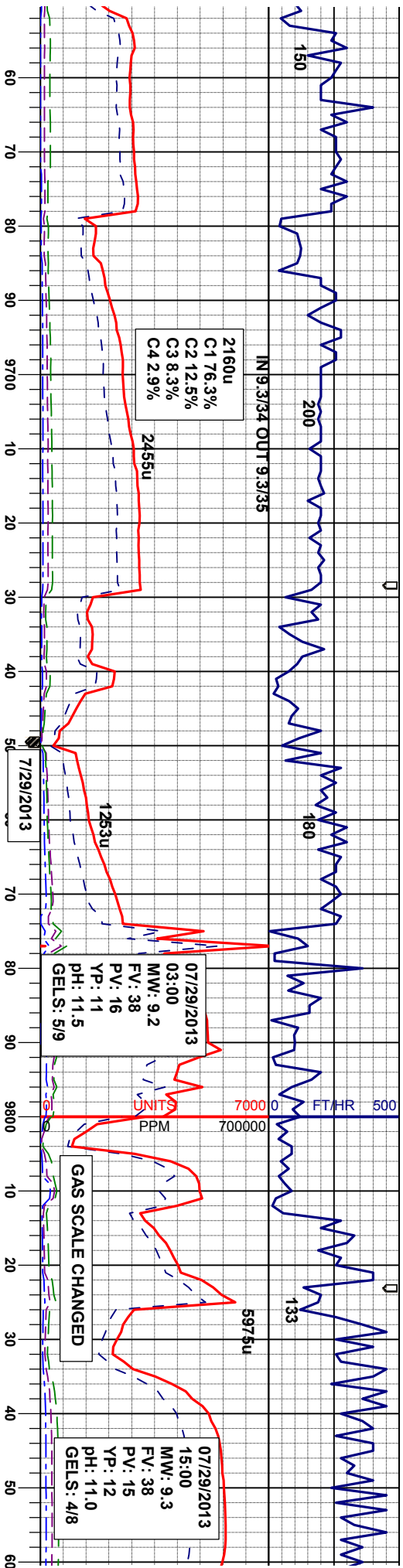






MR.LST: m gy - dk gy - blk, mod sft - firm, brit, gt tex - sb wxy tex, microxn, sbblky - sbply, disn pyr thru, intbd w/ fos frag inoc, v calc; CHK: m gybrn, occ mot gybrn - dk gybrn, v firm, brit, sbblky - sbply, sbwxy tex - sl gt tex, arg calc mtx, v calc; sl tr dul org mnrl flr, fast diffuse, multi sting, bri bl wh cut, n stn or od	MR.LST: m gy - dk gy - blk, mod sft - firm, brit, gt tex - sb wxy tex, microxn, sbblky - sbply, disn pyr thru, intbd w/ fos frag inoc, v calc; CHK: m gybrn, occ mot gybrn - dk gybrn, v firm, brit, sbblky - sbply, sbwxy tex - sl gt tex, arg calc mtx, v calc; sl tr dul org mnrl flr, mod fast diffuse, sl sting, mod bri bl wh mky cut, n stn or od	MR.LST: m gy - dk gy - blk, mod sft - firm, brit, gt tex - sb wxy tex, microxn, sbblky - sbply, disn pyr thru, intbd w/ fos frag inoc, v calc; CHK: m gybrn, occ mot gybrn - dk gybrn, v firm, brit, sbblky - sbply, sbwxy tex - sl gt tex, arg calc mtx, v calc; sl tr dul org mnrl flr, mod fast diffuse, sl sting, mod bri bl wh mky cut, n stn or od	MR.LST: m gy - dk gy - blk, mod sft - firm, brit, gt tex - sb wxy tex, microxn, sbblky - sbply, disn pyr thru, intbd w/ fos frag inoc, v calc; CHK: m gybrn, occ mot gybrn - dk gybrn, v firm, brit, sbblky - sbply, sbwxy tex - sl gt tex, arg calc mtx, v calc; sl tr dul org mnrl flr, mod fast diffuse, sl sting, mod bri bl wh mky cut, n stn or od
---	--	--	--





SURVEY @
MD 9672
INC 90.1°
AZI 178.0°
TVD 7006.54'

SURVEY @
MD 9767
INC 88.6°
AZI 179.4°
TVD 7007.62'

SUR
MD 9
INC 8
AZI 1
TVD

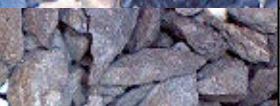
MR.LST: m gy - dk gy - blk, mod sft - firm,
brit, gt tex - sb wxy tex, microxn, sbblky -
sbply, disn pyr thru, intbd w/ fos frag inoc,
v calc; CHK: m gybrn, occ mot gybrn - dk
gybrn, v firm, brit, sbblky - sbply, sbwxy tex
- sl gt tex, arg calc mtx, v calc; sl tr dul orng
mnrl flor, mod fast diffuse, sl stmg, mod bri
bl wh mky cut, n stn or od

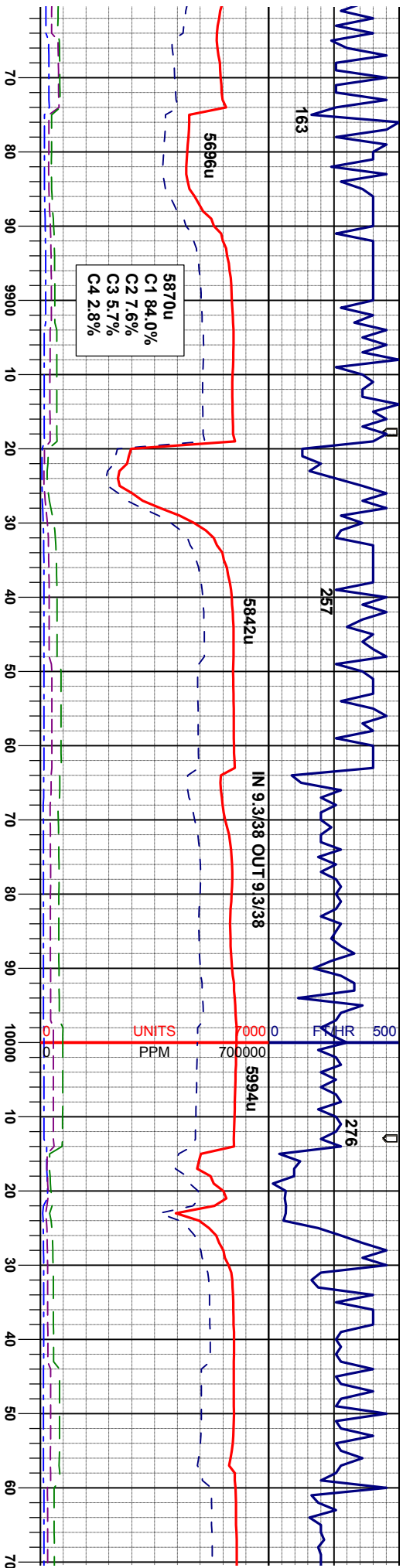
MR.LST: m gy - dk gy - blk, mod sft - firm,
brit, gt tex - sb wxy tex, microxn, sbblky -
sbply, disn pyr thru, intbd w/ fos frag inoc,
v calc; CHK: m gybrn, occ mot gybrn - dk
gybrn, v firm, brit, sbblky - sbply, sbwxy tex
- sl gt tex, arg calc mtx, v calc; sl tr dul orng
mnrl flor, mod fast diffuse, sl stmg, mod bri
bl wh mky cut, n stn or od

MR.LST: m gy - dk gy - blk, mod sft - firm,
brit, gt tex - sb wxy tex, microxn, sbblky -
sbply, disn pyr thru, intbd w/ fos frag inoc,
v calc; CHK: m gybrn, occ mot gybrn - dk
gybrn, v firm, brit, sbblky - sbply, sbwxy tex
- sl gt tex, arg calc mtx, v calc; sl tr dul orng
mnrl flor, fast diffuse, multi stmg, bri bl wh
cut, n stn or od

MR.LST: m gy - dk gy - blk, mod sft - firm,
brit, gt tex - sb wxy tex, microxn, sbblky -
sbply, disn pyr thru, intbd w/ fos frag inoc,
v calc; CHK: m gybrn, occ mot gybrn - dk
gybrn, v firm, brit, sbblky - sbply, sbwxy tex
- sl gt tex, arg calc mtx, v calc; sl tr dul orng
mnrl flor, mod fast diffuse, sl stmg, mod bri
bl wh mky cut, n stn or od

MR.LST
brit, gt t
sbply, t
v calc; t
gybrn, v
- sl gt te
mnrl flo
cut, n s





LEY @
862'
8.2°
81.5°
7010.27'

SURVEY @
MD 9956'
INC 90.1°
AZI 180.4°
TVD 7011.67'

SURVEY @
MD 10051'
INC 90.1°
AZI 180.1°
TVD 7011.50'

m gy - dk gy - blk, mod sft - firm, ex - sb wxy tex, microxln, sbblky - dism pyr thru, intbd w/ fos frag Inoc, CHK: m gybrn, occ mot gybrn - dk / firm, brit, sbblky - sbply, sbwxy tex - arg calc mtx, v calc; sl tr du orng r, fast diffuse, multi stmg, bri bi wh ln or od

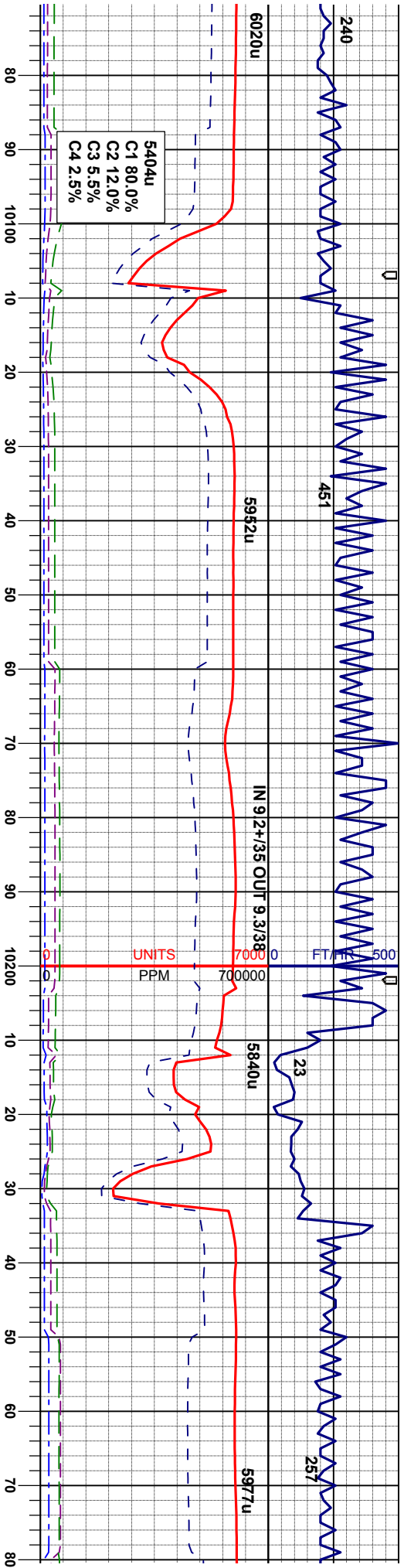
MRLST: m gy - dk gy - blk, mod sft - firm, brit, gt tex - sb wxy tex, microxln, sbblky - sbply, dism pyr thru, intbd w/ fos frag Inoc, v calc; CHK: m gybrn, occ mot gybrn - dk gybrn, v firm, brit, sbblky - sbply, sbwxy tex - sl gt tex, arg calc mtx, v calc; sl tr du orng mnrl flr, mod fast diffuse, sl stmg, mod bri bl wh mky cut, n sin or od

MRLST: m gy - dk gy - blk, mod sft - firm, brit, gt tex - sb wxy tex, microxln, sbblky - sbply, dism pyr thru, intbd w/ fos frag Inoc, v calc; CHK: m gybrn, occ mot gybrn - dk gybrn, v firm, brit, sbblky - sbply, sbwxy tex - sl gt tex, arg calc mtx, v calc; sl tr du orng mnrl flr, fast diffuse, multi stmg, bri bi wh cut, n sin or od

MRLST: m gy - dk gy - blk, mod sft - firm, brit, gt tex - sb wxy tex, microxln, sbblky - sbply, dism pyr thru, intbd w/ fos frag Inoc, v calc; CHK: m gybrn, occ mot gybrn - dk gybrn, v firm, brit, sbblky - sbply, sbwxy tex - sl gt tex, arg calc mtx, v calc; sl tr du orng mnrl flr, fast diffuse, multi stmg, bri bi wh cut, n sin or od

MRLST: m gy - dk gy - blk, mod sft - firm, brit, gt tex - sb wxy tex, microxln, sbblky - sbply, dism pyr thru, intbd w/ fos frag Inoc, v calc; CHK: m gybrn, v firm, brit, sbblky - sbply, sbwxy tex - sl gt tex, arg calc mtx, v calc; sl tr du orng mnrl flr, fast diffuse, multi stmg, bri bi wh cut, n sin or od





SURVEY @
MD 10146°
INC 91.4°
AZI 180.1°
TVD 7010.26'

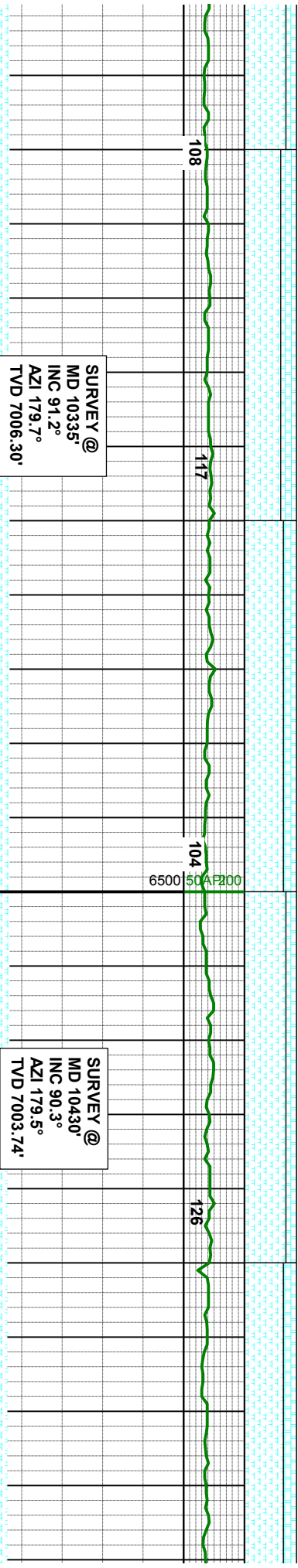
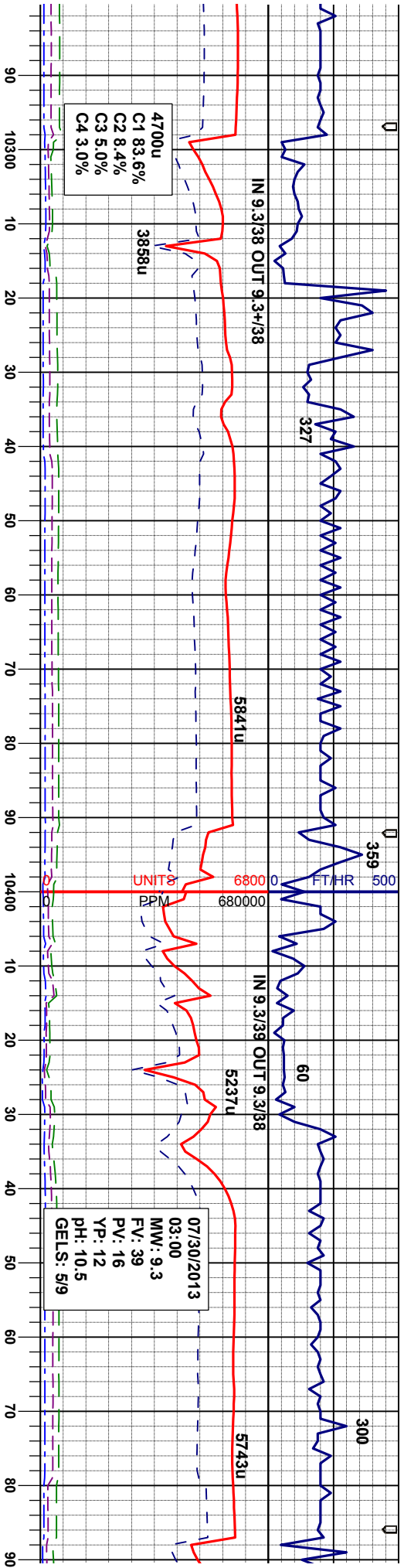
SURVEY @
MD 10241°
INC 91.1°
AZI 178.3°
TVD 7008.19'

MR.LST: m gy - dk gy - blk, mod sft - firm, brit, gt tex - sb wxy tex, microxln, sbblky - sbply, disn pyr thru, intbd w/ fos frag inoc, v calc; CHK: m gybrn, occ mot gybrn - dk gybrn, v firm, brit, sbblky - sbply, sbwxy tex - sl gt tex, arg calc mtx, v calc; sl tr dul orng mnrl flor, fast diffuse, multi string, bri bl wh cut, n sin or od

MR.LST: m gy - dk gy - blk, mod sft - firm, brit, gt tex - sb wxy tex, microxln, sbblky - sbply, disn pyr thru, intbd w/ fos frag inoc, v calc; CHK: m gybrn, occ mot gybrn - dk gybrn, v firm, brit, sbblky - sbply, sbwxy tex - sl gt tex, arg calc mtx, v calc; sl tr dul orng mnrl flor, fast diffuse, multi string, bri bl wh cut, n sin or od

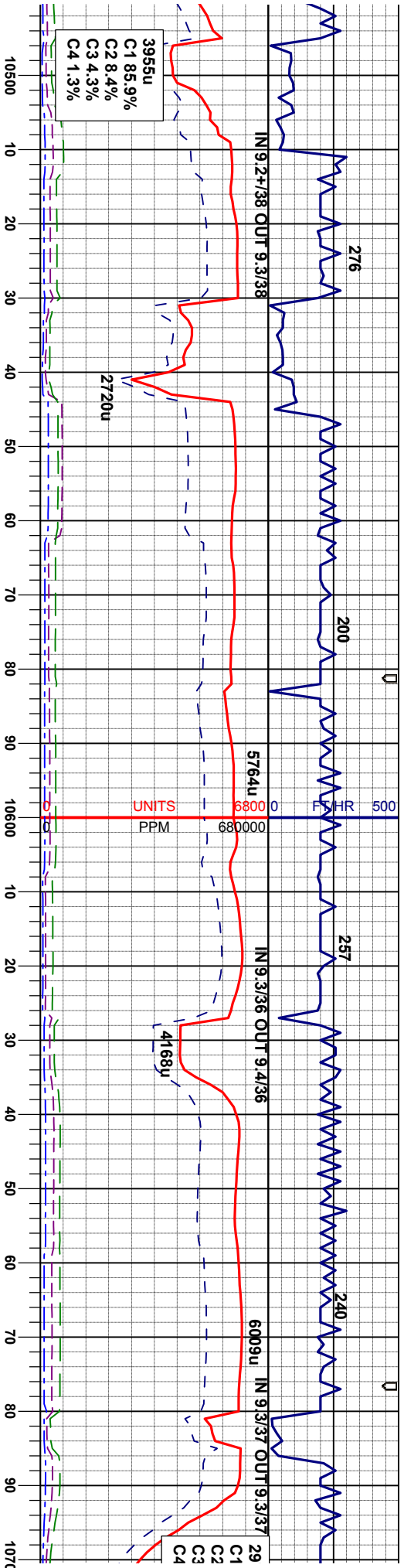
MR.LST: m gy - dk gy - blk, mod sft - firm, brit, gt tex - sb wxy tex, microxln, sbblky - sbply, disn pyr thru, intbd w/ fos frag inoc, v calc; CHK: m gybrn, occ mot gybrn - dk gybrn, v firm, brit, sbblky - sbply, sbwxy tex - sl gt tex, arg calc mtx, v calc; sl tr dul orng mnrl flor, fast diffuse, multi string, bri bl wh cut, n sin or od





nod sft - firm, oxln, sbblky - w/ fos frag inoc, not gybrn - dk pply, sbwxy tex lc; sl tr du orng stmg, bri bl wh	MR.LST: m gy - dk gy - blk, mod sft - firm, brit, gt tex - sb wxy tex, microxln, sbblky - sbply, disn pyr thru, intbd w/ fos frag inoc, v calc; CHK: m gybrn, occ mot gybrn - dk gybrn, v firm, brit, sbblky - sbply, sbwxy tex - sl gt tex, arg calc mtx, v calc; sl tr du orng mnrl flr, fast diffuse, multi stmg, bri bl wh cut, n stn or od	MR.LST: m gy - dk gy - blk, mod sft - firm, brit, gt tex - sb wxy tex, microxln, sbblky - sbply, disn pyr thru, intbd w/ fos frag inoc, v calc; CHK: m gybrn, occ mot gybrn - dk gybrn, v firm, brit, sbblky - sbply, sbwxy tex - sl gt tex, arg calc mtx, v calc; sl tr du orng mnrl flr, fast diffuse, multi stmg, bri bl wh cut, n stn or od	MR.LST: m gy - dk gy - blk, mod sft - firm, brit, gt tex - sb wxy tex, microxln, sbblky - sbply, disn pyr thru, intbd w/ fos frag inoc, v calc; CHK: m gybrn, occ mot gybrn - dk gybrn, v firm, brit, sbblky - sbply, sbwxy tex - sl gt tex, arg calc mtx, v calc; sl tr du orng mnrl flr, fast diffuse, multi stmg, bri bl wh cut, n stn or od
---	---	---	---



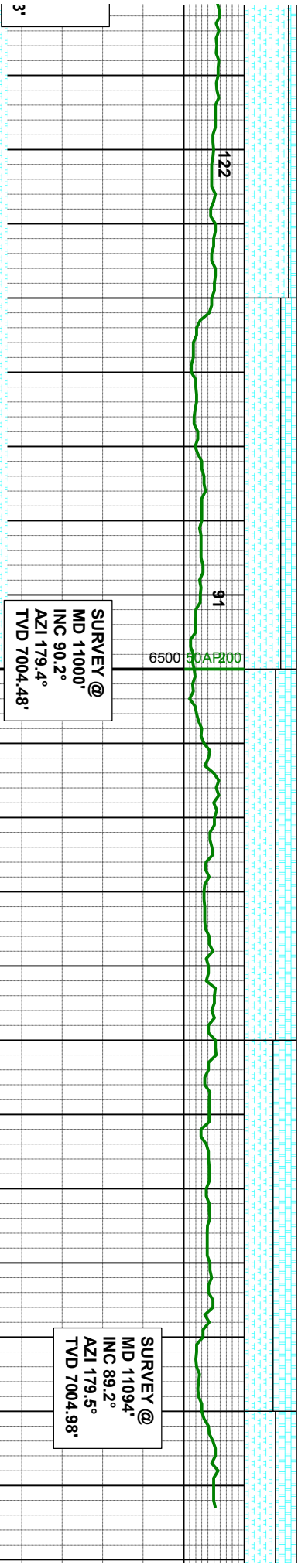
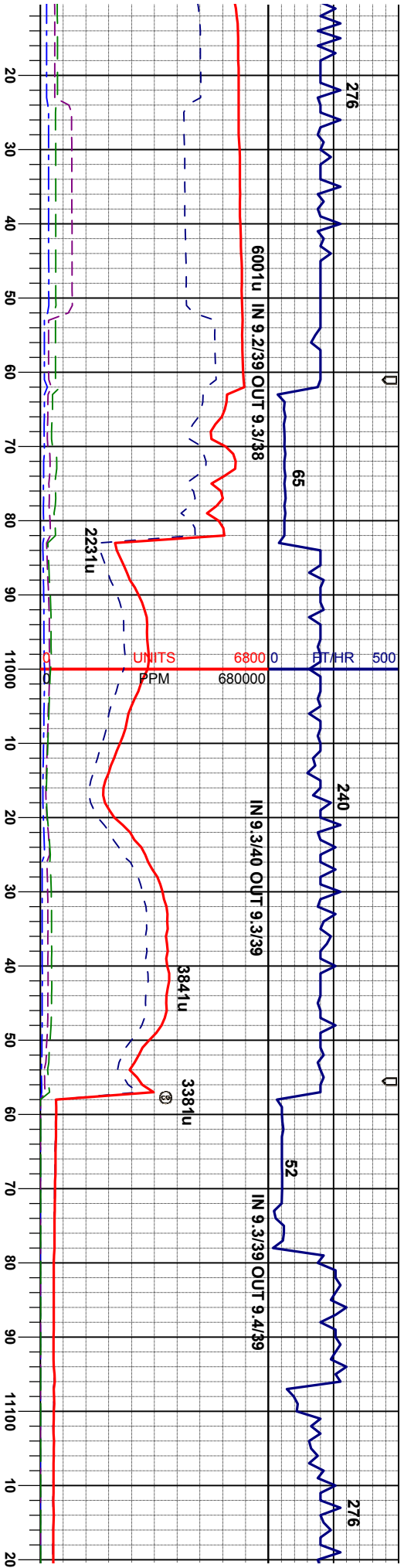


SURVEY @
MD 10525'
INC 89.7°
AZI 179.2°
TVD 7003.74'

SURVEY @
MD 10620'
INC 89.3°
AZI 178.8°
TVD 7004.57'

mod	MRLST: dk gy - blk, mod sft - mod firm, brit,	MRLST: dk gy - blk, mod sft - mod firm, brit,	MRLST: dk gy - blk, firm, brit, gt tex - sb wxy tex, microxn, sbblky - spblty, disn pyr thru, v calc: CHK: gybrn - dk gybrn, occ mot, mod firm, brit - smwt fri ip, sbblky - spblty, sbwxy tex - sl gt tex, arg calc mtk, v calc: occ fos frag, tr bent, tr dul org mnt flr, mod diffuse, sl string, mod bri bl wh cut, n sin or od
CHK:	gt tex - sb wxy tex, microxn, sbblky - spblty, disn pyr thru, v calc: tr chk, tr bent, tr dul org mnt flr, mod fast diffuse, mod string, mod bri bl wh cut, n sin or od	gt tex - sb wxy tex, microxn, sbblky - spblty, disn pyr thru, v calc: tr chk, tr bent, tr dul org mnt flr, mod fast diffuse, multi string, mod bri bl wh cut, n sin or od	gt tex - sb wxy tex, microxn, sbblky - spblty, disn pyr thru, v calc: CHK: gybrn - dk gybrn, occ mot, mod firm, brit - smwt fri ip, sbblky - spblty, sbwxy tex - sl gt tex, arg calc mtk, v calc: occ fos frag, tr bent, tr dul org mnt flr, mod diffuse, sl string, mod bri bl wh cut, n sin or od
ng			
x - sl			
ti, brit			
li bri bl			





SURVEY @
MD 11000'
INC 90.2°
AZI 179.4°
TVD 7004.48'

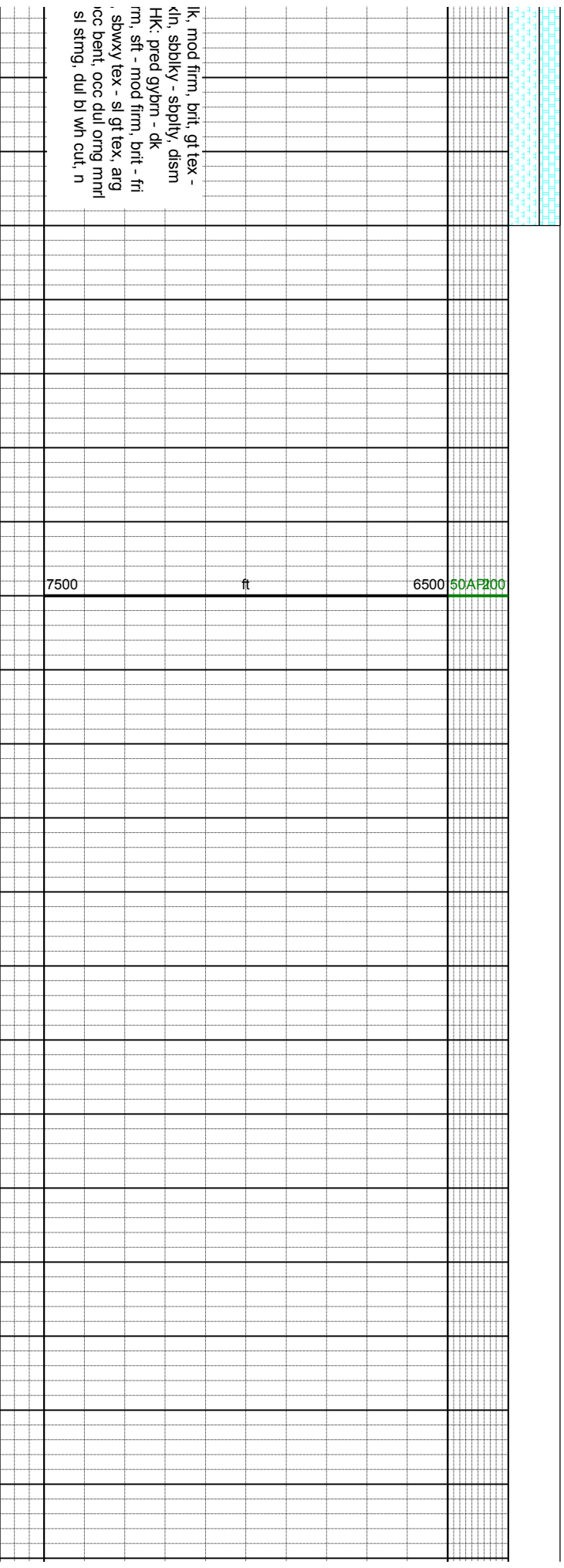
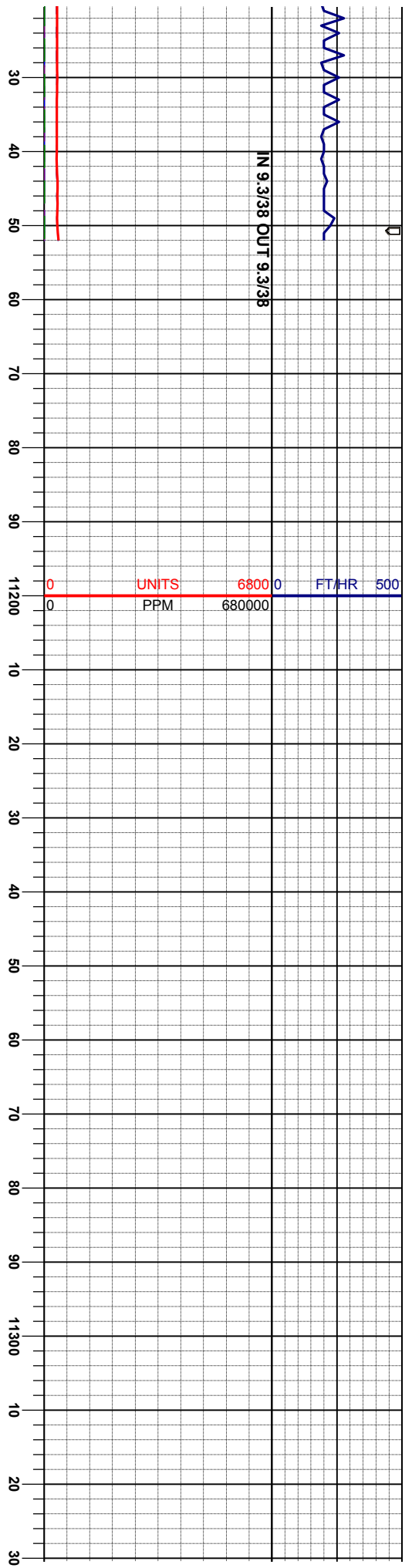
SURVEY @
MD 11094'
INC 89.2°
AZI 179.5°
TVD 7004.98'

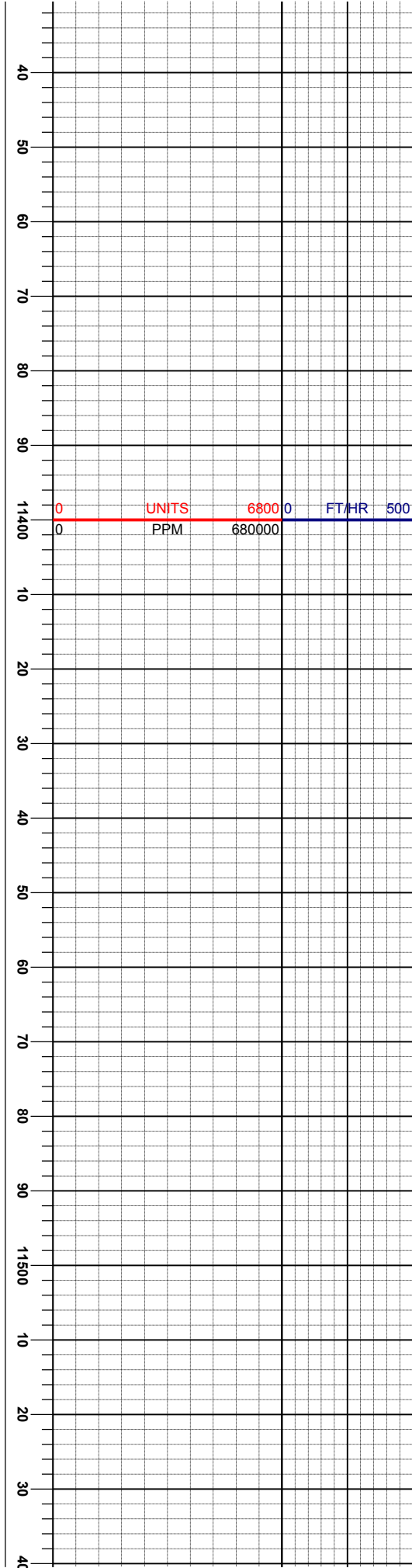
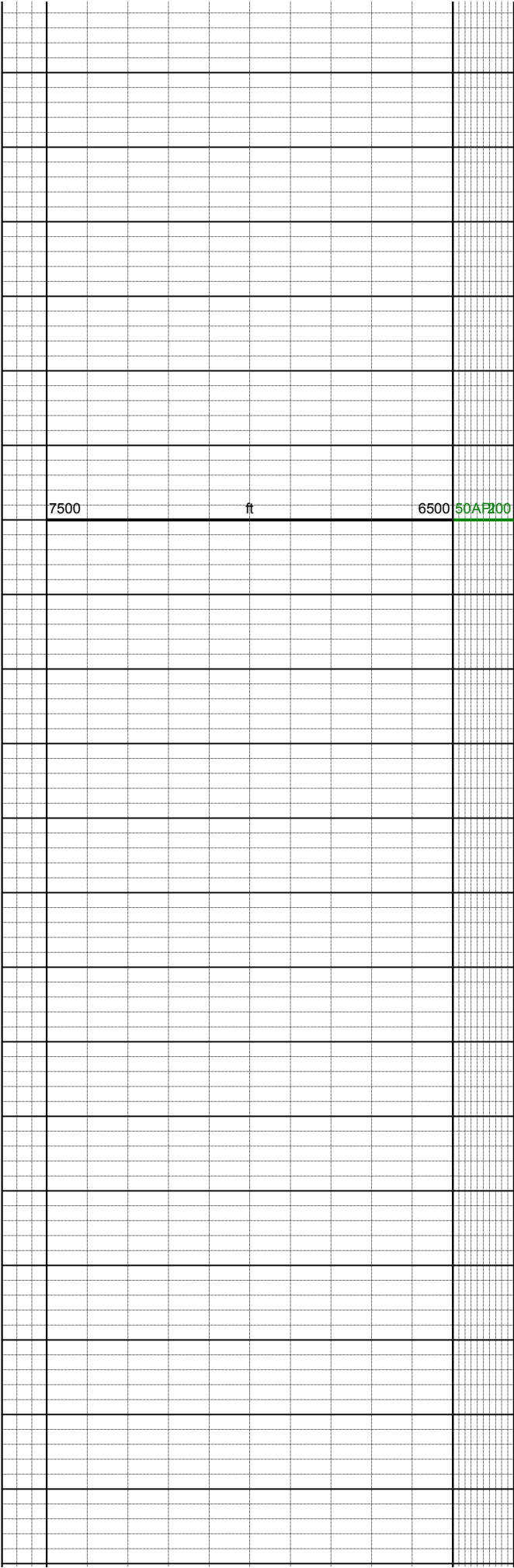
MRSLST: dk gy - blk, mod firm, brit, gt tex - sb wxy tex, microxn, sbblky - sbply, dism pyr thru, v calc: CHK: gybm - dk gybm, sme mot, mod firm - v firm, brit, sbblky - sbply, sbwxy tex - sl gt tex, arg calc mtx, v calc, sl tr bent, sl tr du orng mnrl flr, mod diffuse, sl sting, mod bri bl wh cut, n stn or od

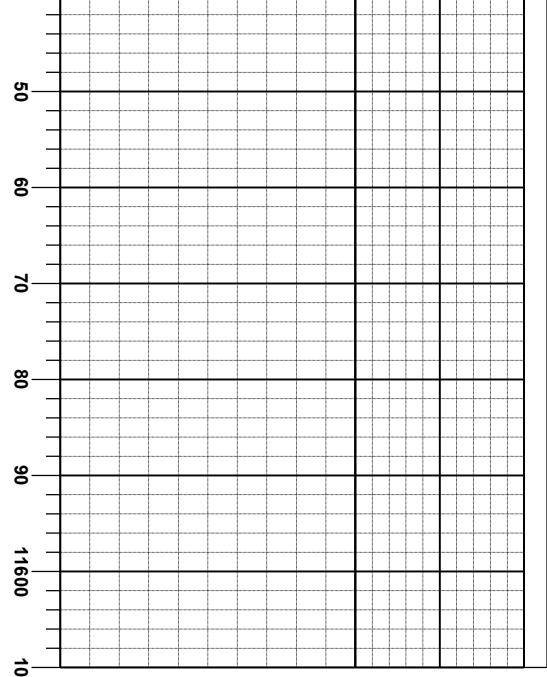
MRSLST: dk gy - blk, mod firm, brit, gt tex - sb wxy tex, microxn, sbblky - sbply, dism pyr thru, v calc: CHK: gybm - dk gybm, sme mot, sft - mod firm, brit - fri ip, sbblky - sbply, sbwxy tex - sl gt tex, arg calc mtx, v calc, sl tr bent, sl tr du orng mnrl flr, mod diffuse, sl sting, mod bri bl wh cut, n stn or od

MRSLST: dk gy - blk, mod firm, brit, gt tex - sb wxy tex, microxn, sbblky - sbply, dism pyr thru, v calc: CHK: pred gybm - dk gybm, sme mot crm, sft - mod firm, brit - fri ip, sbblky - sbply, sbwxy tex - sl gt tex, arg calc mtx, v calc, occ bent, occ du orng mnrl flr, slow, diffuse, sl sting, du bl wh cut, n stn or od









Thank You for Using
Columbine Logging, I

Moser H27-79HN Wellbore
11xxx' MD @ xxxx hrs on C