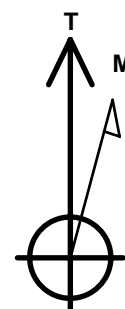
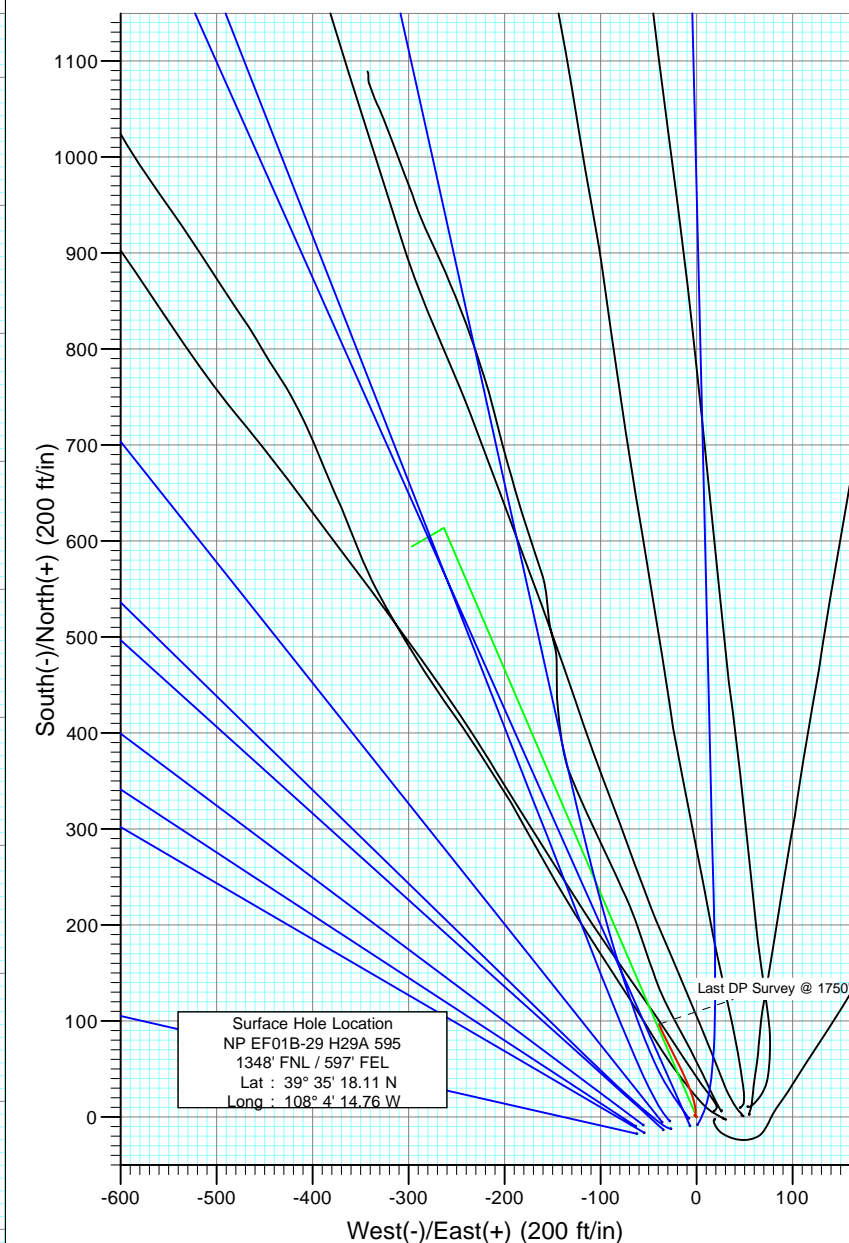
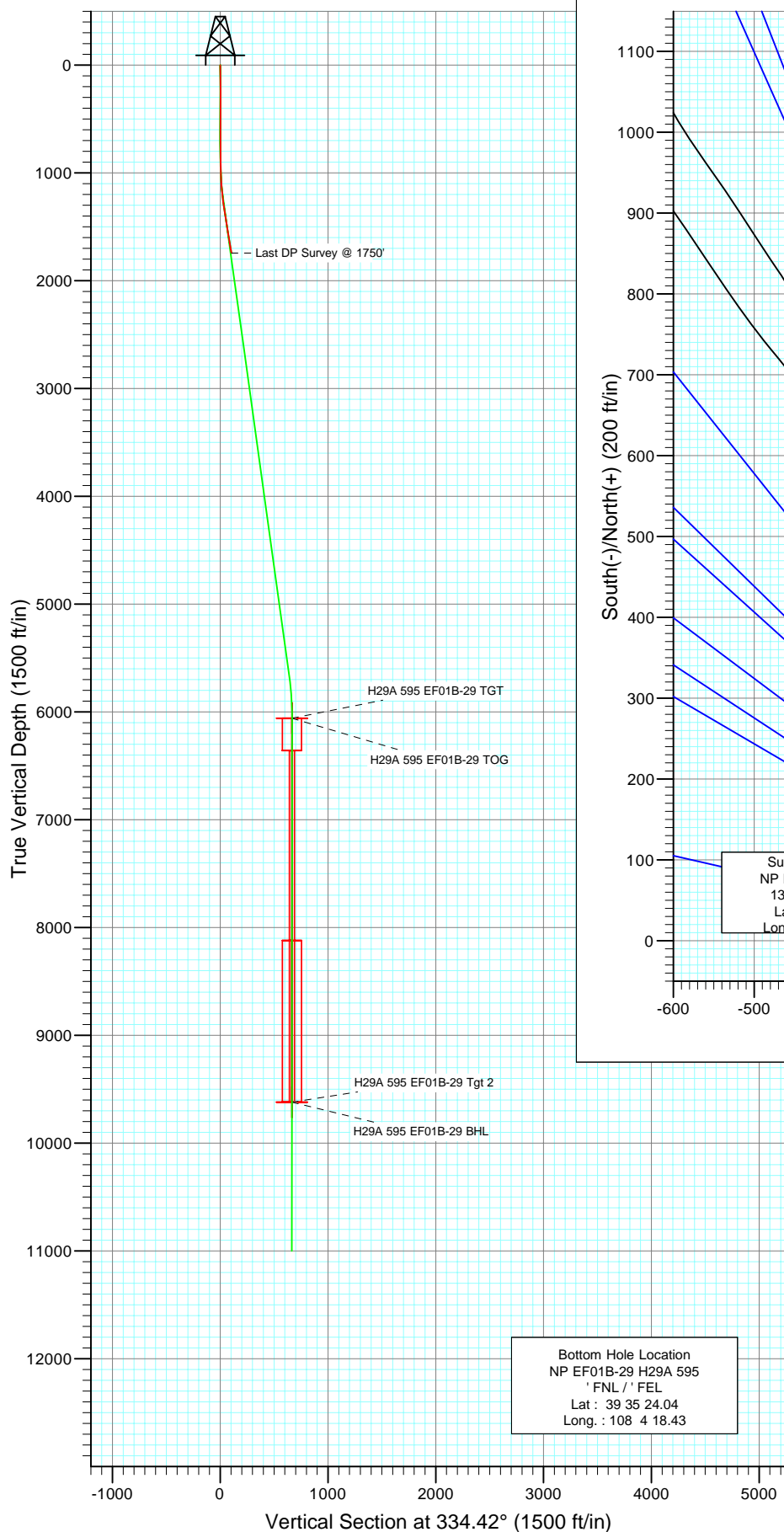




Project: North Piceance
 Site: H29A 595 Pad (SENE S29-T5S-R95W)
 Well: NP EF01B-29 H29A 595
 Wellbore: DD
 Design: DD



Azimuths to True North
 Magnetic North: 10.69°

Magnetic Field
 Strength: 52558.7snT
 Dip Angle: 65.88°
 Date: 1/8/2009
 Model: IGRF200510

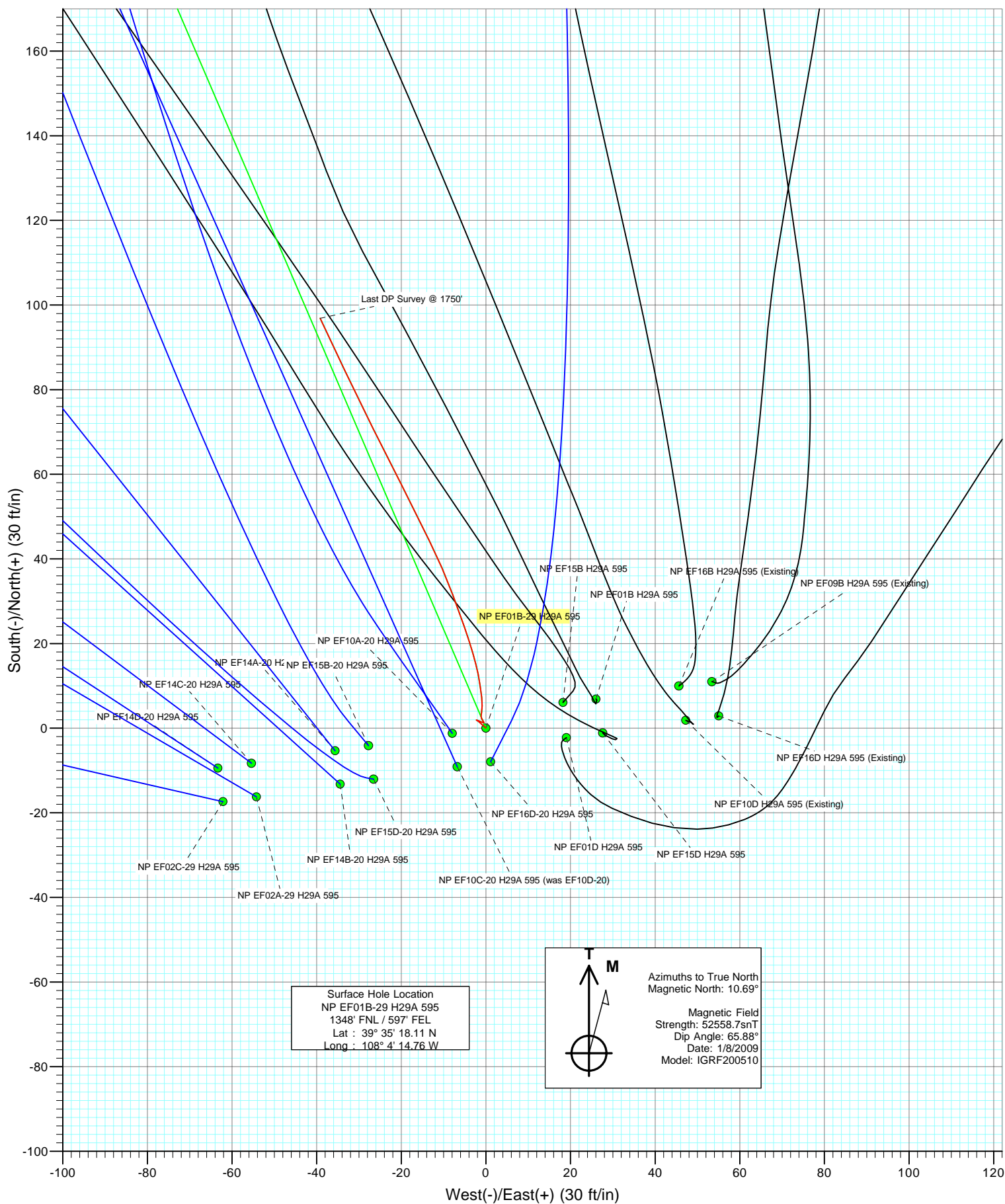
DESIGN DETAILS: DD

Job#: 95020:LR
 KBE @ 6259.0ft (Patterson 306)

Target	Azimuth	Origin	N/S	E/W	From TVD
No Target (Freehand)	334.42	Slot	0.0	0.0	0.0



Project: North Piceance
Site: H29A 595 Pad (SENE S29-T5S-R95W)
Well: NP EF01B-29 H29A 595
Wellbore: DD
Design: DD



Cathedral Energy Services

Survey Report

Company:	EnCana Oil & Gas (USA) Inc	Local Co-ordinate Reference:	Well NP EF01B-29 H29A 595
Project:	North Piceance	TVD Reference:	KBE @ 6259.0ft (Patterson 306)
Site:	H29A 595 Pad (SENE S29-T5S-R95W)	MD Reference:	KBE @ 6259.0ft (Patterson 306)
Well:	NP EF01B-29 H29A 595	North Reference:	True
Wellbore:	DD	Survey Calculation Method:	Minimum Curvature
Design:	DD	Database:	EDM 2003.21 US Multi Users DB

Project	North Piceance		
Map System:	US State Plane 1983	System Datum:	Mean Sea Level
Geo Datum:	North American Datum 1983		
Map Zone:	Colorado Central Zone		

Site	H29A 595 Pad (SENE S29-T5S-R95W)			
Site Position:		Northing:	1,649,445.22 ft	Latitude: 39° 35' 18.14 N
From:	Lat/Long	Easting:	2,275,636.58 ft	Longitude: 108° 4' 14.06 W
Position Uncertainty:	0.0 ft	Slot Radius:	0.000 in	Grid Convergence: -1.62 °

Well	NP EF01B-29 H29A 595			
Well Position	+N/-S	0.0 ft	Northing:	1,649,443.91 ft
	+E/-W	0.0 ft	Easting:	2,275,581.50 ft
Position Uncertainty	0.0 ft	Wellhead Elevation:	ft	Ground Level: 6,236.0 ft

Wellbore	DD				
Magnetics	Model Name	Sample Date	Declination (°)	Dip Angle (°)	Field Strength (nT)
	IGRF200510	1/8/2009	10.69	65.88	52,559

Design	DD			
Audit Notes:				
Version:	1.0	Phase:	ACTUAL	Tie On Depth: 0.0
Vertical Section:	Depth From (TVD)	+N/-S (ft)	+E/-W (ft)	Direction (°)
	0.0	0.0	0.0	334.42

Survey Program	Date	1/16/2009		
From (ft)	To (ft)	Survey (Wellbore)	Tool Name	Description
232.0	1,750.0	Survey #1 (DD)	MWD	Geolink MWD

Survey									
Measured Depth (ft)	Inclination (°)	Azimuth (°)	Vertical Depth (ft)	+N/-S (ft)	+E/-W (ft)	Vertical Section (ft)	Dogleg Rate (°/100ft)	Build Rate (°/100ft)	Formations / Comments
0.0	0.00	0.00	0.0	0.0	0.0	0.0	0.00	0.00	
232.0	1.10	312.10	232.0	1.5	-1.7	2.1	0.47	0.47	
293.0	0.30	280.70	293.0	1.9	-2.2	2.7	1.41	-1.31	
355.0	0.30	111.90	355.0	1.9	-2.3	2.7	0.96	0.00	
416.0	0.40	100.70	416.0	1.8	-1.9	2.4	0.20	0.16	
477.0	0.40	114.40	477.0	1.7	-1.5	2.1	0.16	0.00	
523.0	0.40	119.10	523.0	1.5	-1.2	1.9	0.07	0.00	
569.0	0.70	115.50	569.0	1.3	-0.8	1.5	0.66	0.65	
660.0	0.30	325.40	660.0	1.3	-0.4	1.3	1.07	-0.44	
752.0	0.40	337.30	752.0	1.8	-0.7	1.9	0.13	0.11	
844.0	0.40	321.10	844.0	2.3	-1.0	2.5	0.12	0.00	
935.0	1.60	10.30	935.0	3.8	-1.0	3.9	1.51	1.32	
1,027.0	2.70	354.20	1,026.9	7.2	-1.0	6.9	1.35	1.20	

Cathedral Energy Services

Survey Report

Company:	EnCana Oil & Gas (USA) Inc	Local Co-ordinate Reference:	Well NP EF01B-29 H29A 595
Project:	North Piceance	TVD Reference:	KBE @ 6259.0ft (Patterson 306)
Site:	H29A 595 Pad (SENE S29-T5S-R95W)	MD Reference:	KBE @ 6259.0ft (Patterson 306)
Well:	NP EF01B-29 H29A 595	North Reference:	True
Wellbore:	DD	Survey Calculation Method:	Minimum Curvature
Design:	DD	Database:	EDM 2003.21 US Multi Users DB

Survey

Measured Depth (ft)	Inclination (°)	Azimuth (°)	Vertical Depth (ft)	+N/-S (ft)	+E/-W (ft)	Vertical Section (ft)	Dogleg Rate (°/100ft)	Build Rate (°/100ft)	Formations / Comments
1,119.0	4.20	349.40	1,118.7	12.7	-1.8	12.2	1.66	1.63	
1,211.0	6.20	341.60	1,210.3	20.7	-4.0	20.4	2.30	2.17	
1,302.0	8.30	339.70	1,300.6	31.5	-7.9	31.8	2.32	2.31	
1,394.0	9.10	333.70	1,391.5	44.3	-13.4	45.7	1.31	0.87	
1,486.0	9.40	333.30	1,482.4	57.5	-20.0	60.5	0.33	0.33	
1,577.0	9.40	333.20	1,572.1	70.8	-26.7	75.4	0.02	0.00	
1,669.0	9.60	334.70	1,662.9	84.4	-33.3	90.6	0.35	0.22	
1,750.0	9.90	334.80	1,742.7	96.9	-39.2	104.3	0.37	0.37	Last DP Survey @ 1750'

Targets

Target Name - hit/miss target - Shape	Dip Angle (°)	Dip Dir. (°)	TVD (ft)	+N/-S (ft)	+E/-W (ft)	Northing (ft)	Easting (ft)	Latitude	Longitude
H29A 595 EF01B-29 BH - survey misses target center by 7896.3ft at 1750.0ft MD (1742.7 TVD, 96.9 N, -39.2 E) - Rectangle (sides W30.0 H50.0 D0.0)	0.00	0.00	9,619.0	599.8	-287.1	1,650,051.63	2,275,311.50	39° 35' 24.04 N	108° 4' 18.43 W
H29A 595 EF01B-29 TC - survey misses target center by 4352.6ft at 1750.0ft MD (1742.7 TVD, 96.9 N, -39.2 E) - Rectangle (sides W100.0 H200.0 D300.0)	0.00	0.00	6,059.0	599.8	-287.1	1,650,051.63	2,275,311.50	39° 35' 24.04 N	108° 4' 18.43 W
H29A 595 EF01B-29 TG - survey misses target center by 4352.9ft at 1750.0ft MD (1742.7 TVD, 96.9 N, -39.2 E) - Point	0.00	0.00	6,059.0	613.8	-263.1	1,650,064.91	2,275,335.87	39° 35' 24.18 N	108° 4' 18.12 W
H29A 595 EF01B-29 Tg - survey misses target center by 7896.3ft at 1750.0ft MD (1742.7 TVD, 96.9 N, -39.2 E) - Rectangle (sides W100.0 H200.0 D0.0)	0.00	0.00	9,619.0	599.8	-287.1	1,650,051.63	2,275,311.50	39° 35' 24.04 N	108° 4' 18.43 W

Survey Annotations

Measured Depth (ft)	Vertical Depth (ft)	Local Coordinates +N/-S (ft)	+E/-W (ft)	Comment
1,750.0	1,742.7	96.9	-39.2	Last DP Survey @ 1750'

Checked By: _____ Approved By: _____ Date: _____