



WELL INFORMATION					
MWD Run Number	100	200			
Date run completed	20-May-13	21-May-13			
Rig Bit Number	2	3			
Bit Size (in)	8.750	8.750			
Tool Nominal OD (in)	6.750	6.750			
Log Start Depth (TVD, ft)	638.96	5,876.98			
Log End Depth (TVD, ft)	5,876.98	6,657.79			
Drill or Wipe	Drill	Drill			
Drill/Wipe Start Date and Time	19-May-13 14:30	20-May-13 22:30			
Drill/Wipe End Date and Time	20-May-13 09:00	21-May-13 16:00			
Min Inc (deg) @ Depth (TVD, ft)	.36 @ 5,155.05	.14 @ 5,913.98			
Max Inc (deg) @ Depth (TVD, ft)	17.55 @ 3,941.43	86.05 @ 6,654.66			
Bit TFA(in2) / Bit Type	.86 / PDC	.86 / PDC			
Flow Rate (gpm)	585.36	558.33			
Max AV (fpm) / CV (fpm) @ MWD	357.0 / NA	374.0 / NA			
Fluid Type	Fresh Water Gel	Fresh Water Gel			
Density (ppg) / Viscosity (spqt)	8.75 / 26.00	9.93 / 38.00			
Filtrate CL (ppm)	2,600.00	2,300.00			
pH / Fluid Loss (mptm)	8.60 / 22	9.70 / 8			
PV (cP) / YP (Ihf2)	1 / 4.00	14 / 13.00			
% Solids / % Sand	2.4 / 0.25	11.2 / 0.20			
% Oil / Oil:Water Ratio	0 / 0:95	0 / 0:95			
Rm @ Measured Temp (degF)	NA @ NA	NA @ NA			
Rmf @ Measured Temp (degF)	NA @ NA	NA @ NA			
Rmc @ Measured Temp (degF)	NA @ NA	NA @ NA			
Max Tool Temp (deg F) / S	452.48 / PDM	427.27 / PDM			

Max Tool Temp (degF) / Source	150.10 / PCM	167.97 / PCM			
Rm @ Max Tool Temp (degF)	NA @ NA	NA @ NA			
Lead MWD Engineer	Gary Eifert	Gary Eifert			
Customer Representative	Johnny Sanchez	Johnny Sanchez			

SENSOR INFORMATION

Downhole Processor Information

Tool Type	PCM	PCM			
Software Version	5.76	5.76			
Sub Serial Number	11342299	11342299			
Insert Serial Number	11055831	11055831			
Date and Time Initialized	18-May-13 22:52	18-May-13 22:52:00			
Date and Time Read	22-May-13 00:46	22-May-13 01:05			
ECMB SW Version	N/A	N/A			

Directional Sensor Information

Tool Type	PCDC	PCDC			
Distance From Bit (ft)	57.00	55.00			
Software Version	6.21	6.21			
Sub Serial Number	11342299	11342299			
Sonde Serial Number	11833235	11833235			
Sensor ID Number	N/A	N/A			
Toolface Offset (deg)	319.76	300.00			

Gamma Ray Sensor Information

Tool Type	PCG	PCG			
Distance From Bit (ft)	50.58	48.23			
Recorded Sample Period (sec)	10	10			
Software Version	8.15	8.15			
Sub Serial Number	11342299	11342299			
Insert/Sonde Serial Number	11681007	11681007			

REMARKS

1. All depths are true vertical bit depths, referenced to the Driller's pipe tally and are measured from the Drill Floor, unless otherwise specified.
2. No depth corrections have been made for pipe stretch or compression.
3. Critical annual velocities are calculated using the "Power Law" model for water based fluids and the "Bingham Plastic" model for oil and synthetic based fluids.
4. All data presented is recorded data unless otherwise specified.
5. The following smoothing parameters have been applied to the data:
PGRC (Corrected Gamma Ray):
Interval Resolution: 0.5 ft
Interval Distance: 0.6 ft
Gap Fill: 3.0 ft
ROPA (Average Rate of Penetration)
Interval Resolution: 0.5 ft
Interval Distance: 1.2 ft
Gap Fill: 3.0 ft
6. Surveys at MD 366' and 639' were done by gyro.
7. INSITE version 7.4.01

WARRANTY

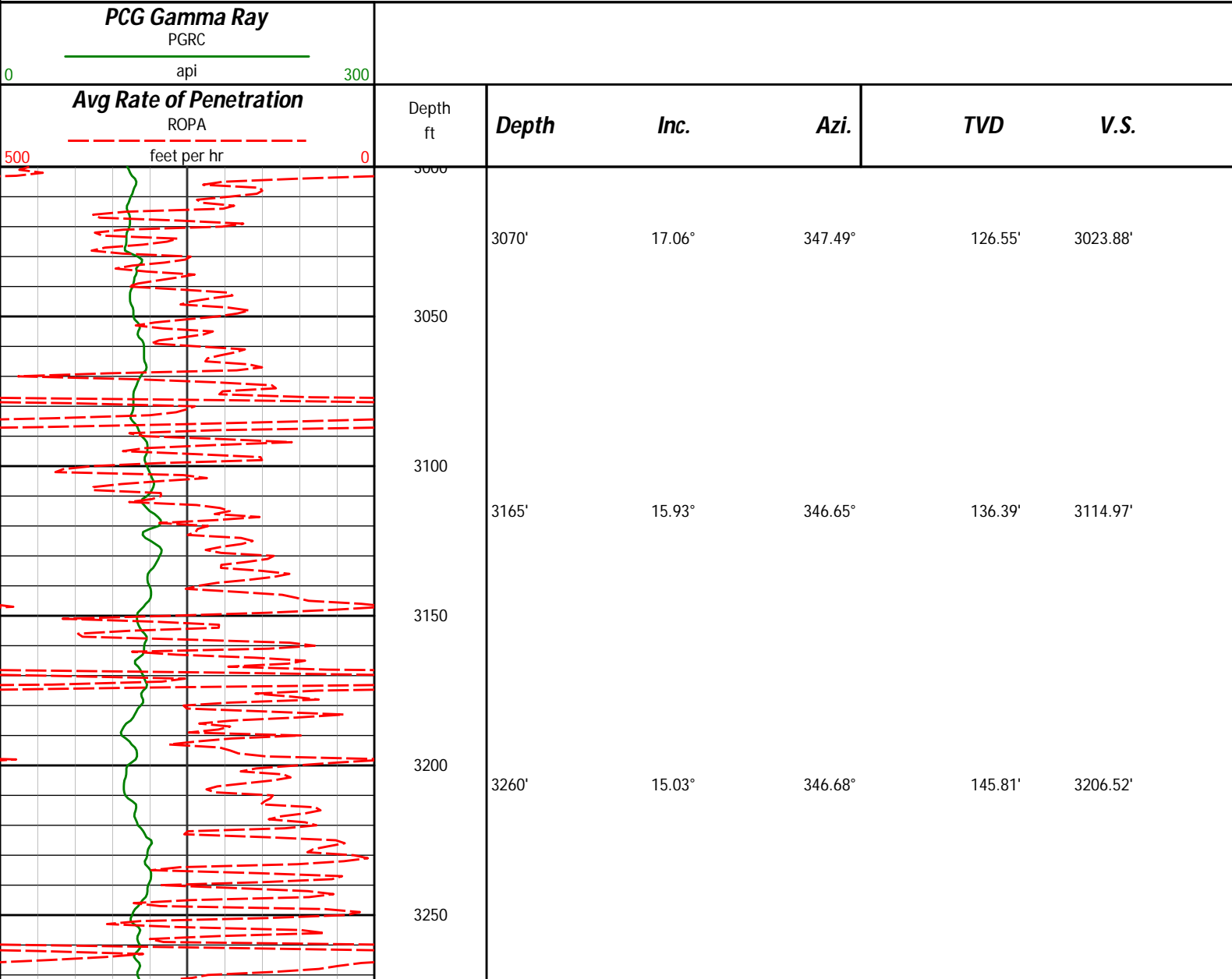
HALLIBURTON WILL USE ITS BEST EFFORTS TO FURNISH CUSTOMERS WITH ACCURATE INFORMATION AND INTERPRETATIONS THAT ARE PART OF, AND INCIDENT TO, THE SERVICES PROVIDED. HOWEVER, HALLIBURTON CANNOT AND DOES NOT WARRANT THE ACCURACY OR CORRECTNESS OF SUCH INFORMATION AND INTERPRETATIONS. UNDER NO CIRCUMSTANCES SHOULD ANY SUCH INFORMATION OR INTERPRETATION BE RELIED UPON AS THE SOLE BASIS FOR ANY DRILLING, COMPLETION, PRODUCTION, OR FINANCIAL DECISION OR ANY PROCEDURE INVOLVING ANY RISK TO THE SAFETY OF ANY DRILLING VENTURE, DRILLING RIG OR ITS CREW OR ANY OTHER THIRD PARTY. THE CUSTOMER HAS FULL RESPONSIBILITY FOR ALL DRILLING, COMPLETION AND PRODUCTION OPERATION. HALLIBURTON MAKES NO REPRESENTATIONS OR WARRANTIES, EITHER EXPRESSED OR IMPLIED, INCLUDING, BUT NOT LIMITED TO, THE IMPLIED WARRANTIES OF MERCHANTABILITY OR FITNESS FOR A PARTICULAR PURPOSE, WITH RESPECT TO THE SERVICES RENDERED. IN NO EVENT WILL HALLIBURTON BE LIABLE FOR FAILURE TO OBTAIN ANY PARTICULAR RESULTS OR FOR ANY DAMAGES, INCLUDING, BUT NOT LIMITED TO, INDIRECT, SPECIAL OR CONSEQUENTIAL DAMAGES, RESULTING FROM THE USE OF ANY INFORMATION OR INTERPRETATION PROVIDED BY HALLIBURTON.

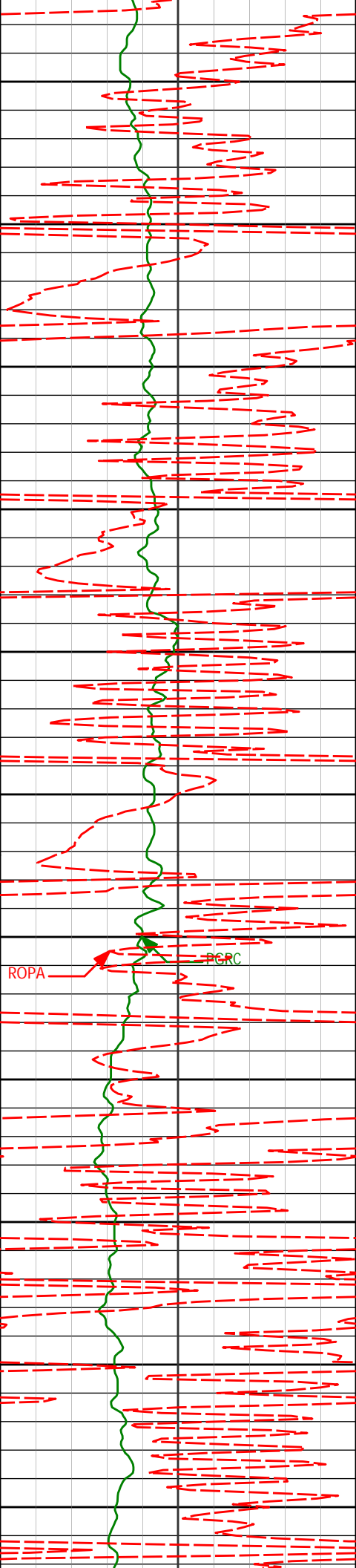
HALLIBURTON

Sperry Drilling Services

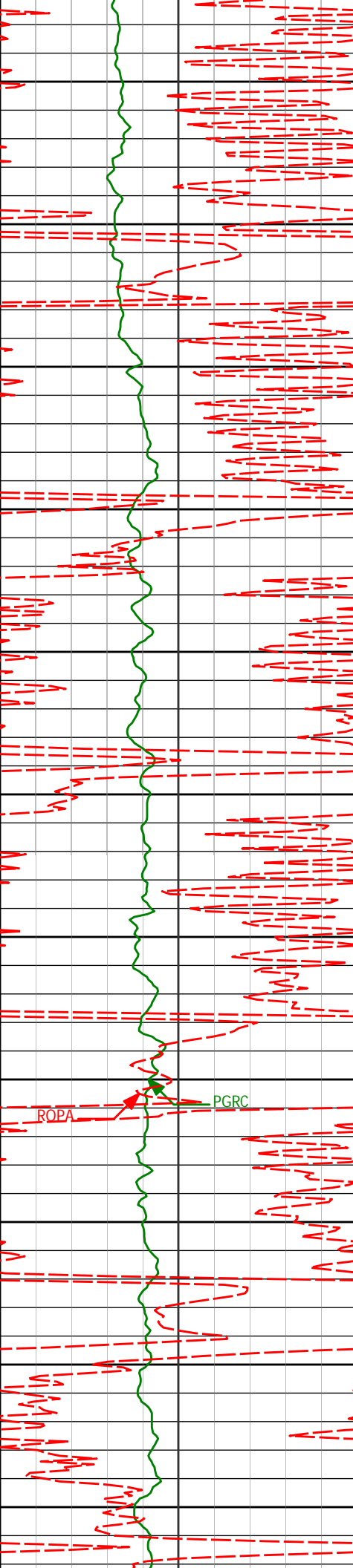
TVD Main Log 1:600

Noble Energy
Wells Ranch USX AA23-64-1HN
H&P 343
T6N-R63W

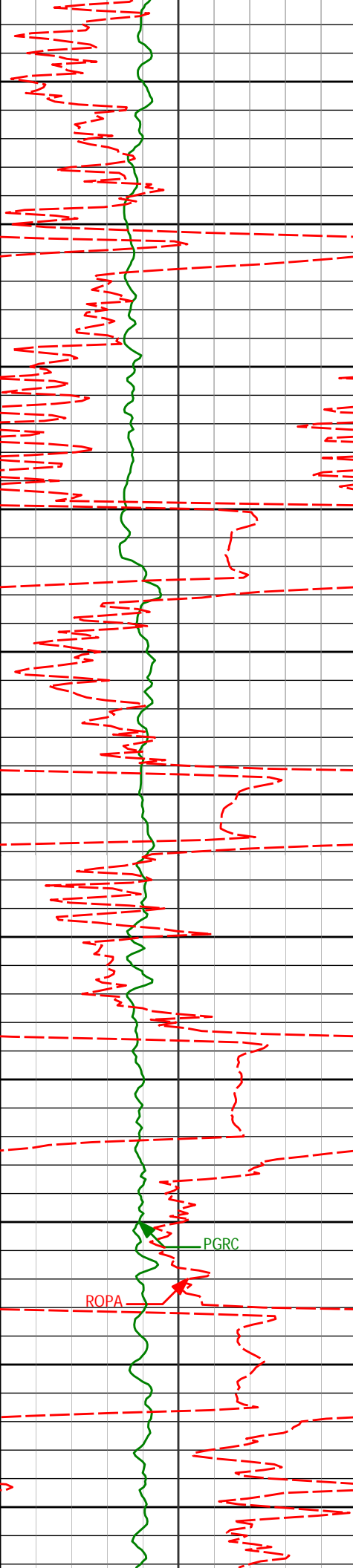




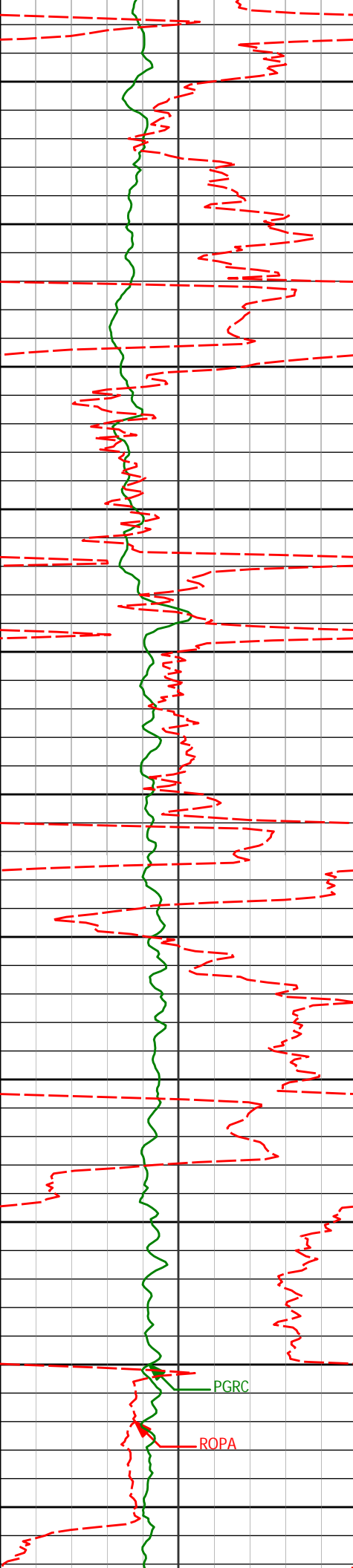
3300	3354'	13.49°	347.07°	154.33'	3297.62'
3350					
3400	3449'	14.19°	345.72°	162.87'	3389.86'
3450					
3500	3544'	12.84°	343.65°	171.81'	3482.23'
3550					
3600	3639'	12.68°	349.45°	179.63'	3574.89'
3650					
3700	3734'	14.36°	351.74°	186.42'	3667.26'
3750					
3800	3829'	15.57°	352.49°	193.32'	3759.03'



3850	3924'	15.95°	352.99°	200.31'	3850.46'
3900					
3950	4019'	17.55°	350.38°	208.25'	3941.43'
4000					
4050	4114'	16.09°	349.14°	217.05'	4032.37'
4100					
4150	4208'	14.64°	349.28°	225.26'	4123.00'
4200	4303'	15.56°	350.93°	233.05'	4214.72'
4250					
4300	4398'	13.52°	342.89°	241.69'	4306.69'
4350					



4400	4493'	11.30°	343.06°	250.48'	4399.46'
4450					
4500	4587'	10.89°	341.61°	258.44'	4491.70'
4550					
4600	4682'	8.71°	343.68°	265.51'	4585.31'
4650					
4700	4778'	5.79°	340.80°	270.81'	4680.53'
4750					
4800	4873'	3.64°	349.58°	274.01'	4775.21'
4850					
4900	4968'	1.62°	303.04°	276.21'	4870.11'



4950

5062'

1.67°

305.64°

278.63'

4964.07'

5000

5157'

0.46°

328.78°

280.10'

5059.06'

5100

5253'

0.36°

308.88°

280.61'

5155.05'

5200

5347'

0.76°

334.72°

281.21'

5249.05'

5300

5443'

0.43°

115.45°

281.21'

5345.05'

5400

PGRC

ROPA

5538'

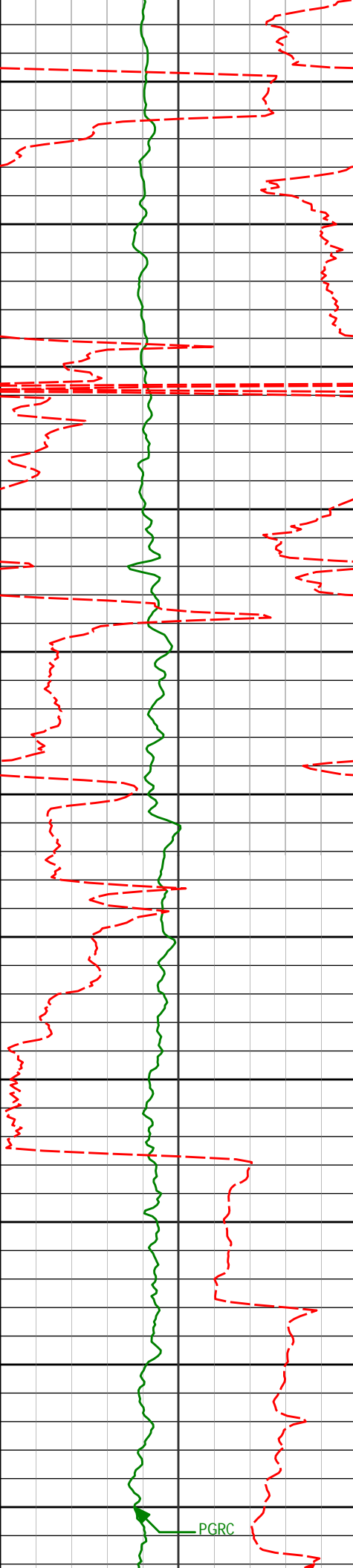
1.00°

61.13°

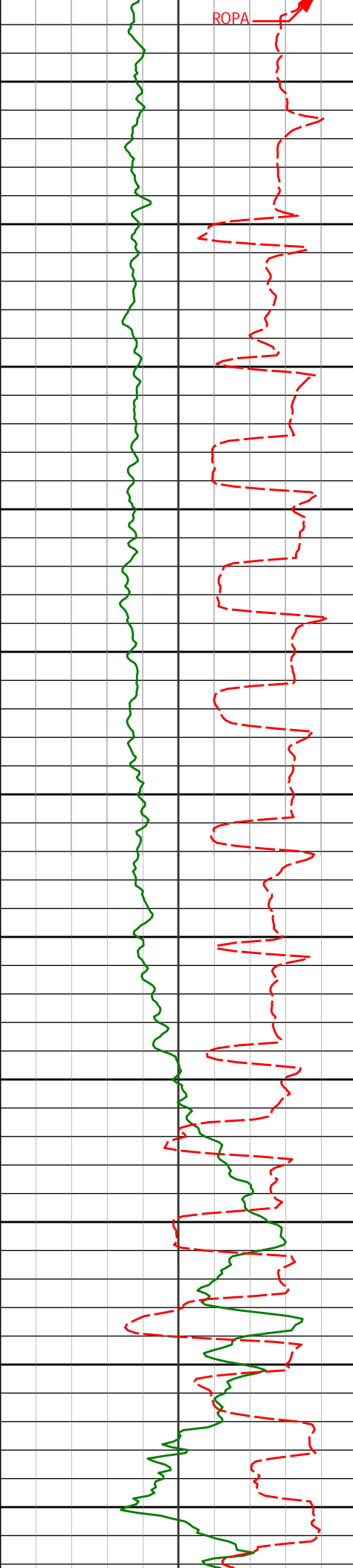
280.21'

5440.04'

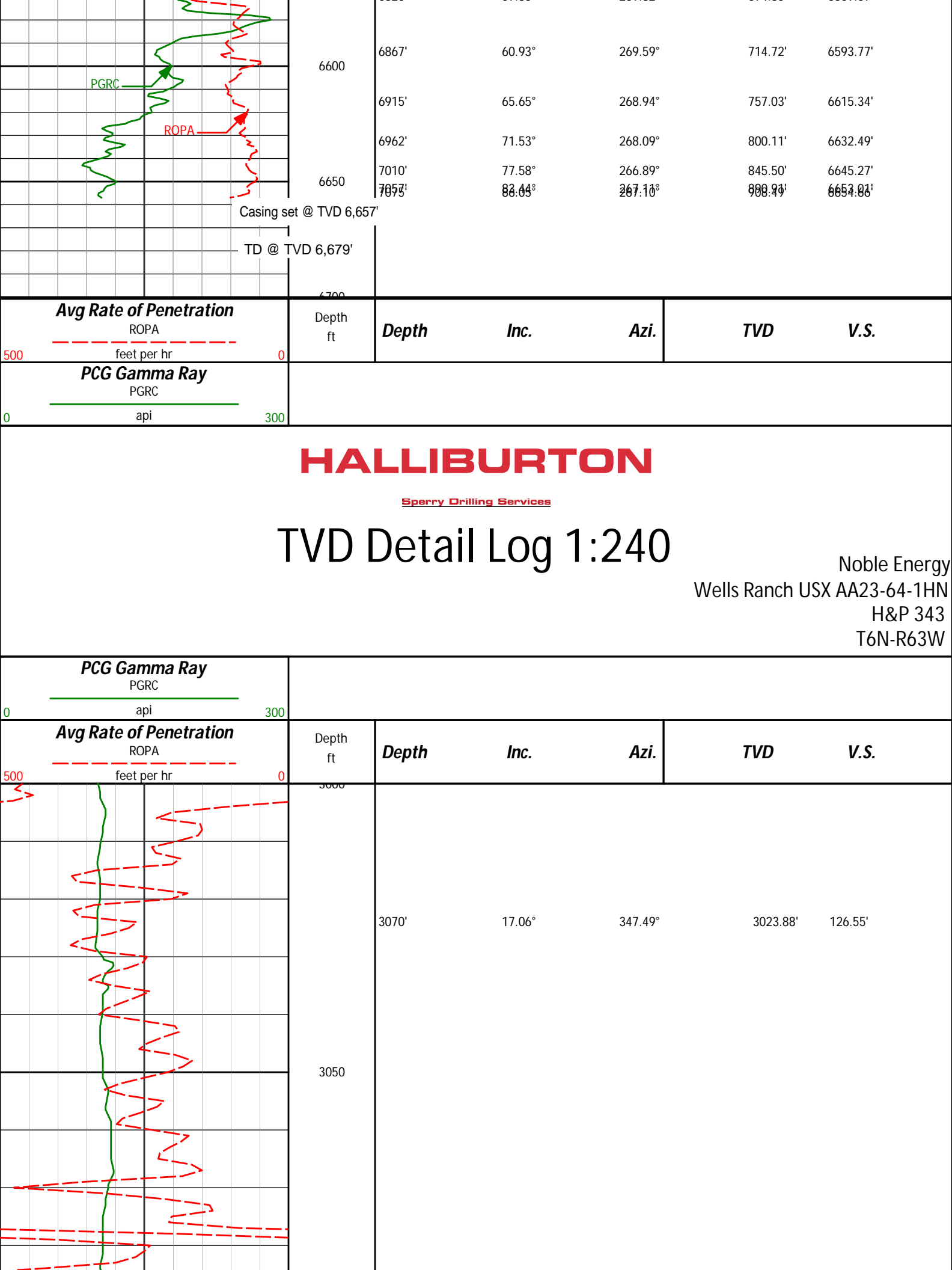
5450

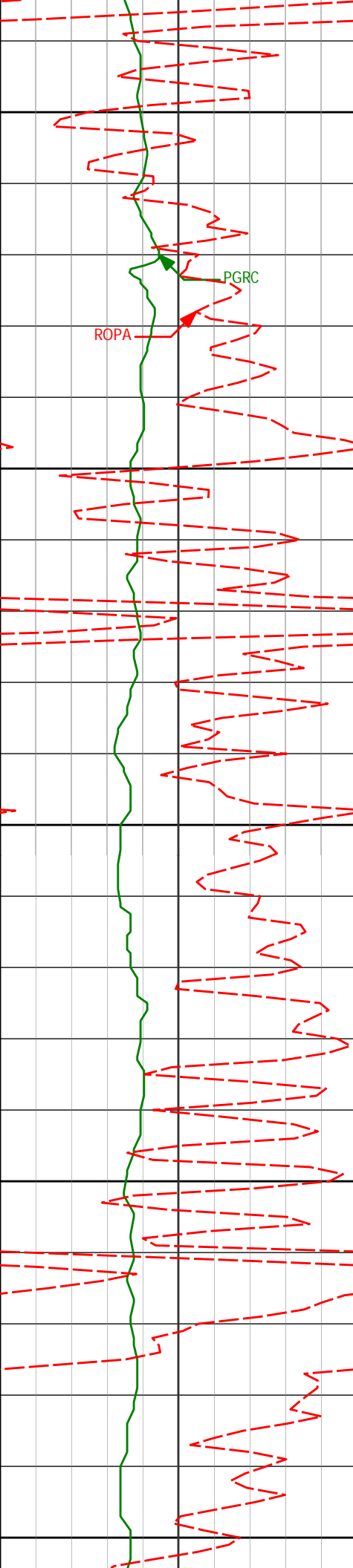


5500				
5633'	1.17°	82.50°	278.61'	5535.02'
5550				
5600				
5728'	1.05°	83.63°	276.84'	5630.00'
5650				
5700				
5823'	1.03°	77.16°	275.20'	5724.99'
5750				
5800				
5918'	0.57°	105.21°	273.94'	5819.98'
5850				
<Run 200>				
5900				
6012'	0.14°	116.06°	273.37'	5913.98'
5950				
6060'	4.83°	241.60°	274.93'	5961.92'
6000				
6107'	10.50°	244.63°	280.07'	6008.48'



6050	6155'	15.03°	248.38°	289.09'	6055.29'
6100	6202'	19.36°	255.19°	301.53'	6100.18'
6150	6250'	23.33°	253.17°	317.44'	6144.88'
6200	6297'	25.80°	256.12°	335.31'	6187.62'
6250	6345'	26.37°	262.16°	355.21'	6230.74'
6300	6392'	28.87°	264.56°	376.24'	6272.38'
6350	6440'	32.04°	267.17°	399.99'	6313.76'
6400	6487'	36.46°	272.37°	426.12'	6352.60'
6450	6535'	41.19°	275.07°	456.10'	6389.99'
	6582'	45.71°	275.50°	488.36'	6424.10'
6500	6630'	49.26°	273.77°	523.65'	6456.54'
	6677'	51.59°	271.86°	559.69'	6486.48'
6550	6725'	53.50°	270.54°	597.49'	6515.67'
	6772'	55.27°	270.57°	635.33'	6543.04'
	6820'	57.35°	269.82°	674.85'	6569.67'





3100

3165'

15.93°

346.65°

3114.97'

136.39'

PGRC

ROPA

3150

3200

3260'

15.03°

346.68°

3206.52'

145.81'

3250

3300

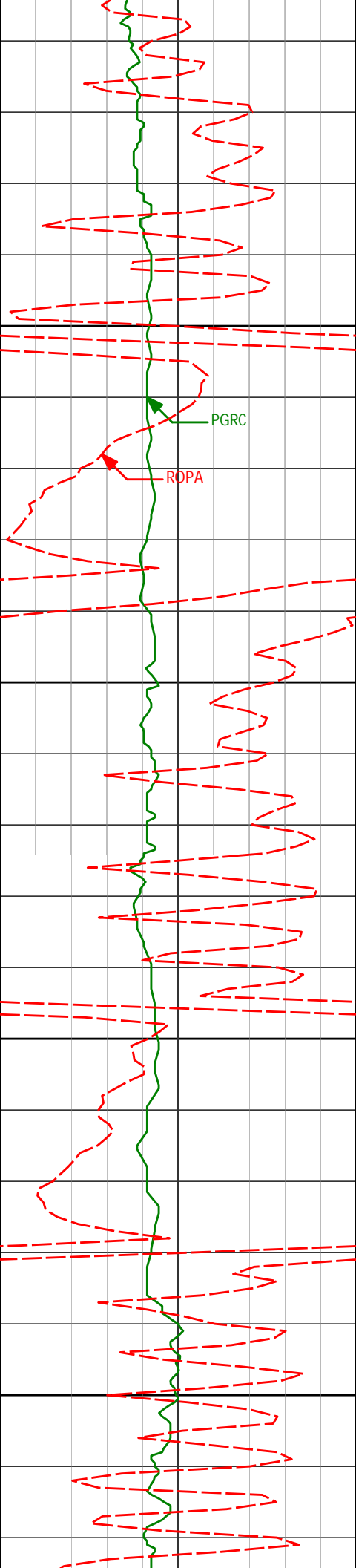
3354'

13.49°

347.07°

3297.62'

154.33'



3350

PGRC

ROPA

3400

3450

3500

3449'

14.19°

345.72°

3389.86'

162.87'

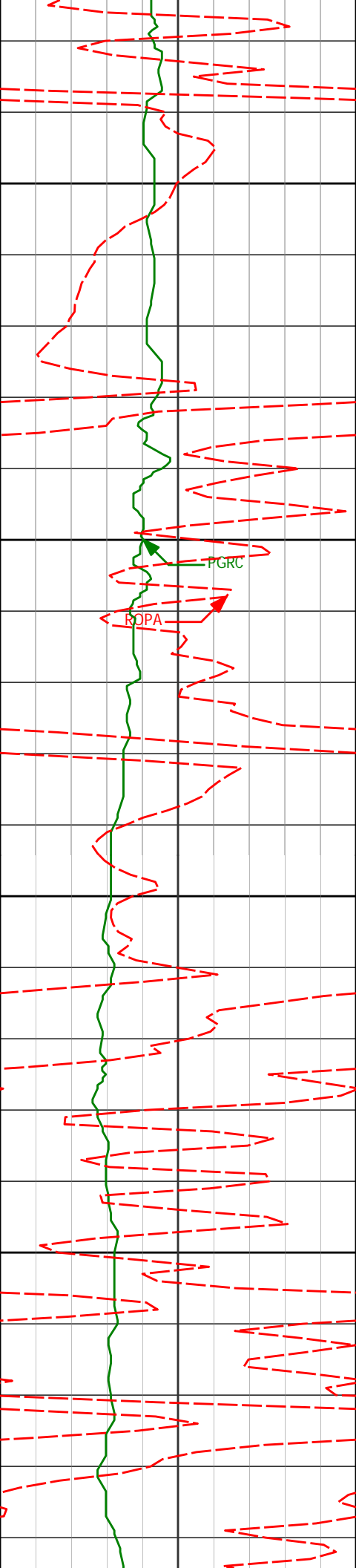
3544'

12.84°

343.65°

3482.23'

171.81'



3550

3639'

12.68°

349.45°

3574.89'

179.63'

3600

PGRC

ROPA

3650

3734'

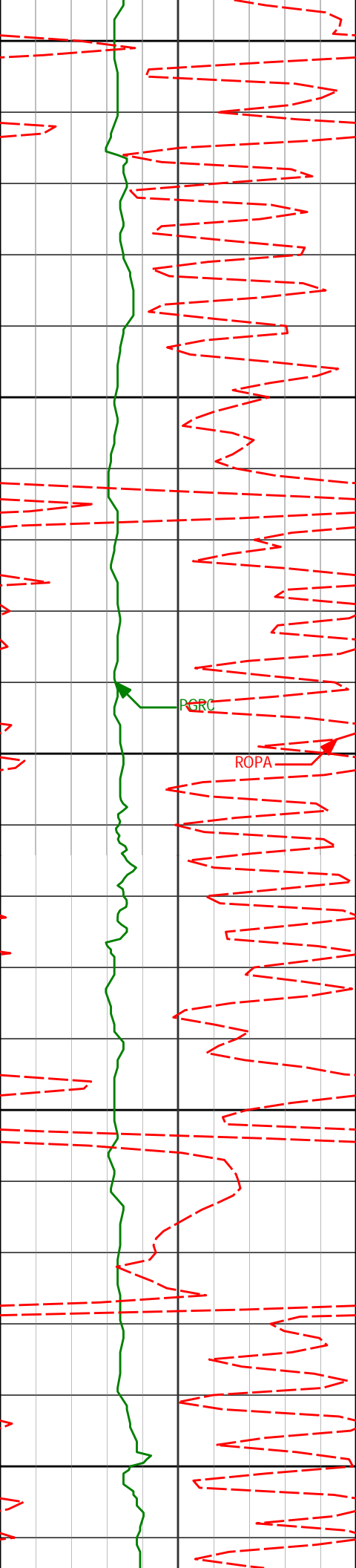
14.36°

351.74°

3667.26'

186.42'

3700



3750

3829'

15.57°

352.49°

3759.03'

193.32'

3800

3850

3924'

15.95°

352.99°

3850.46'

200.31'

3900

3950

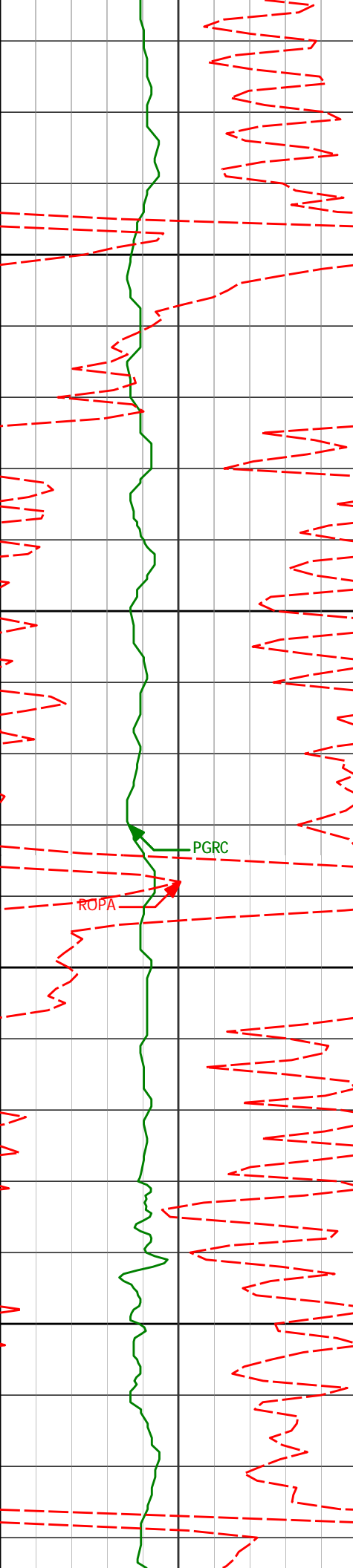
4019'

17.55°

350.38°

3941.43'

208.25'



4000

4050

4100

4150

4114'

16.09°

349.14°

4032.37'

217.05'

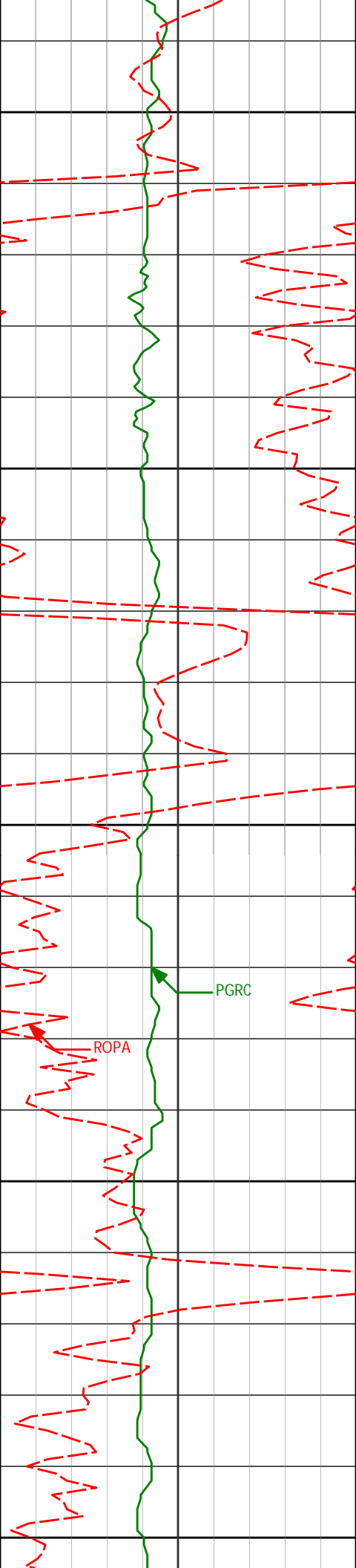
4208'

14.64°

349.28°

4123.00'

225.26'



4200

4303'

15.56°

350.93°

4214.72'

233.05'

4250

4300

4398'

13.52°

342.89°

4306.69'

241.69'

PGRC

ROPA

4350

4400

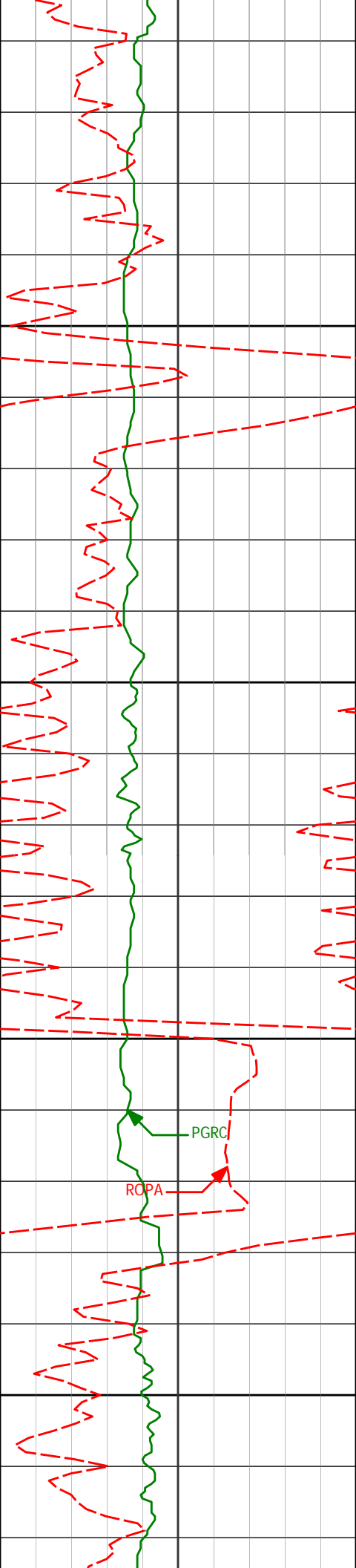
4493'

11.30°

343.06°

4399.46'

250.48'



4450

4587'

10.89°

341.61°

4491.70'

258.44'

4500

4550

PGRC

ROPA

4682'

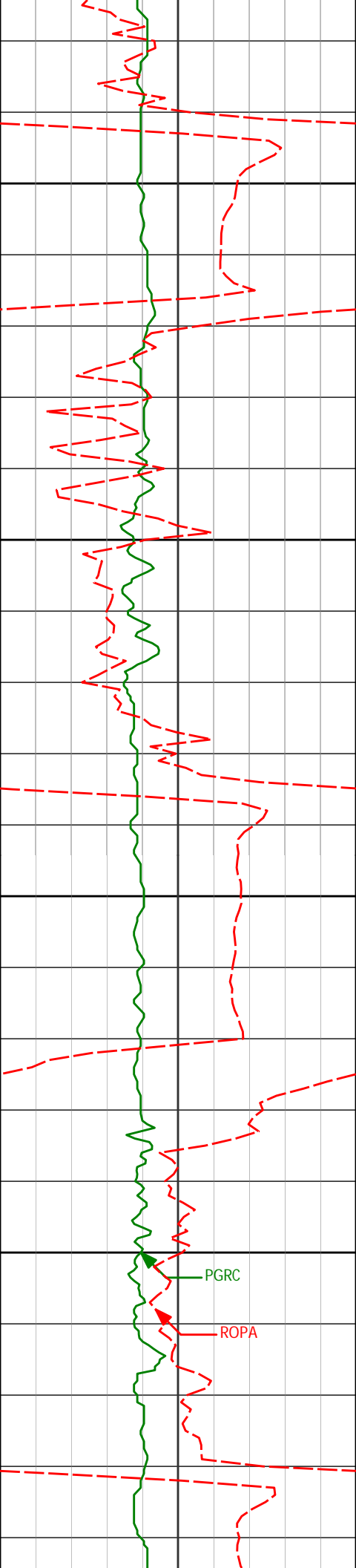
8.71°

343.68°

4585.31'

265.51'

4600



4650

4700

4750

4800

PGRC

ROPA

4778'

5.79°

340.80°

4680.53'

270.81'

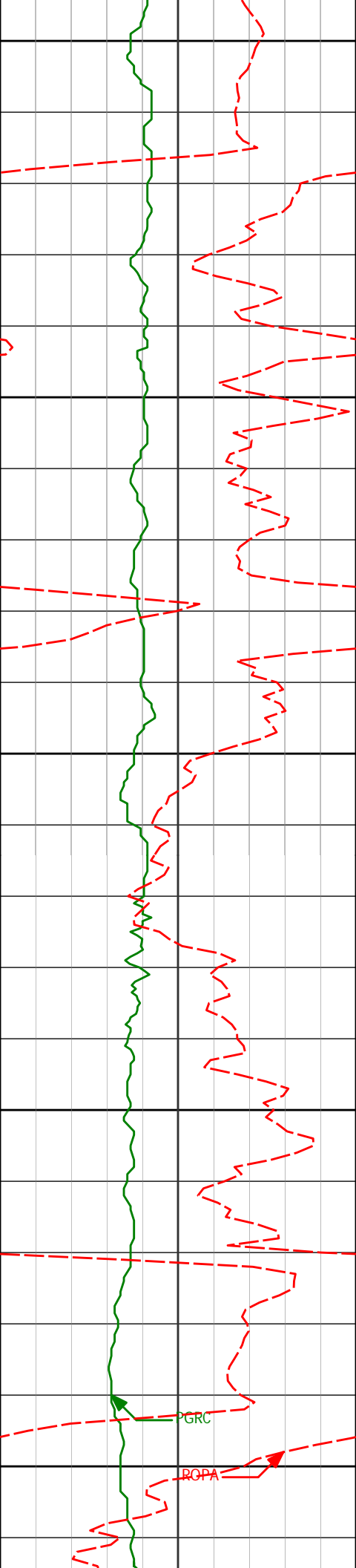
4873'

3.64°

349.58°

4775.21'

274.01'



4850

4968'

1.62°

303.04°

4870.11'

276.21'

4900

4950

5062'

1.67°

305.64°

4964.07'

278.63'

5000

5050

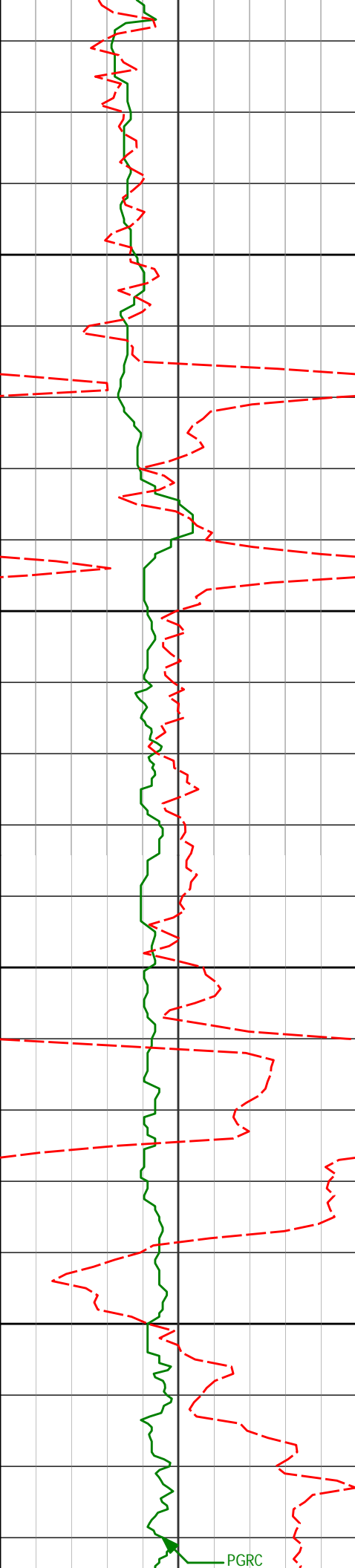
5157'

0.46°

328.78°

5059.06'

280.10'



5100

5150

5200

5250

5253'

0.36°

308.88°

5155.05'

280.61'

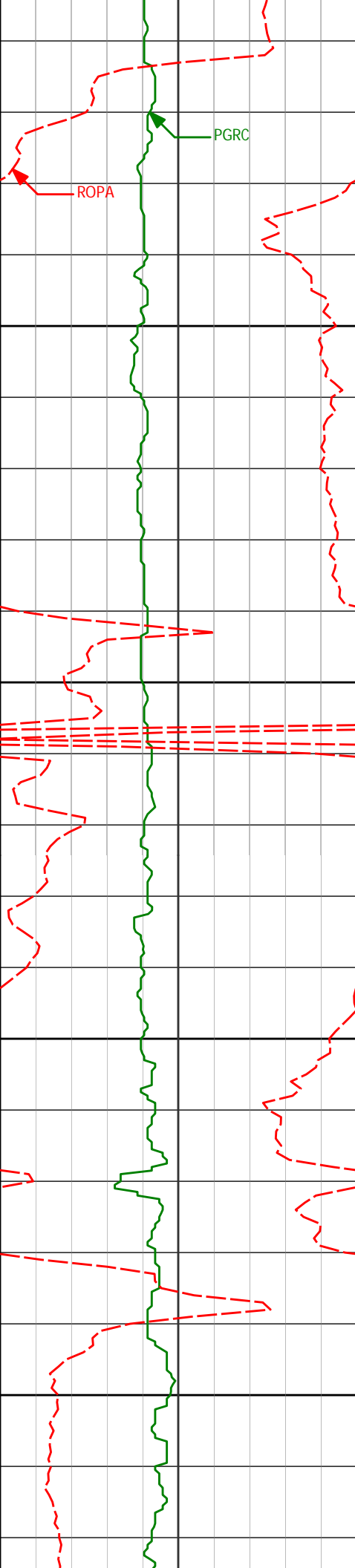
5347'

0.76°

334.72°

5249.05'

281.21'



5633'

1.17°

82.50°

5535.02'

278.61'

5550

5600

5728'

1.05°

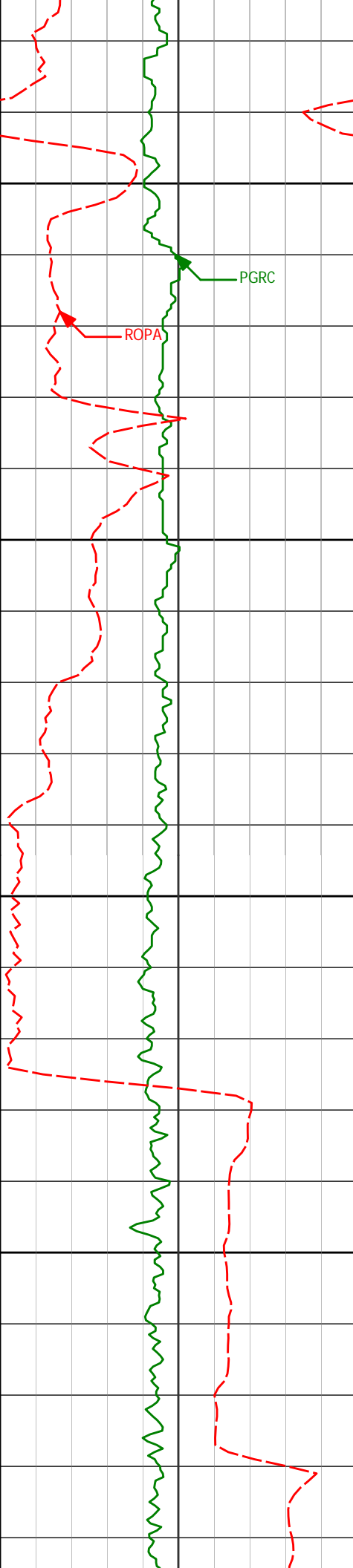
83.63°

5630.00'

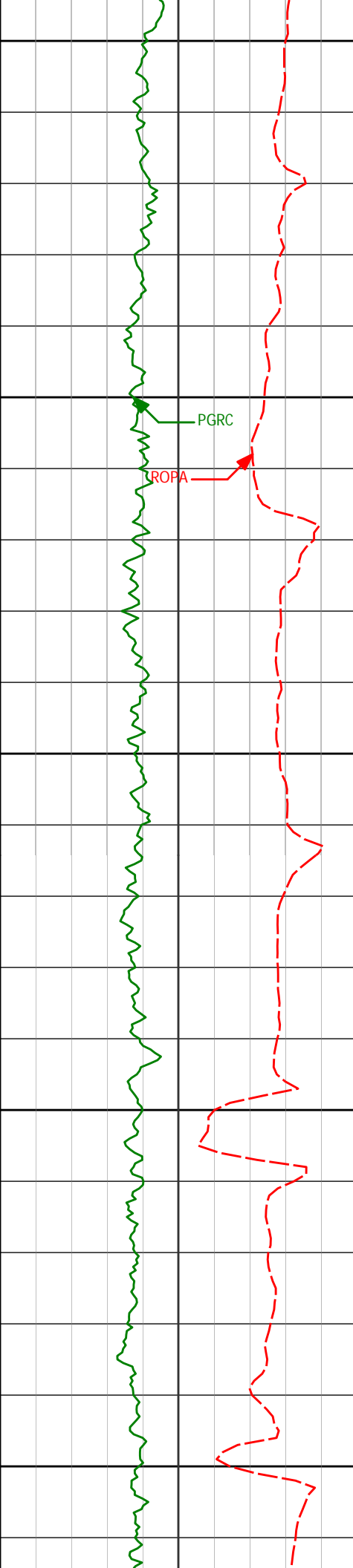
276.84'

5650

5700



Distance (ft)	Angle (°)	Distance (ft)	Angle (°)	Distance (ft)	Angle (°)
5823'	1.03°	77.16°	5724.99'	275.20'	
5918'	0.57°	105.21°	5819.98'	273.94'	
6012'	0.14°	116.06°	5913.98'	273.37'	



5950

6060'

4.83°

241.60°

5961.92'

274.93'

6000

6107'

10.50°

244.63°

6008.48'

280.07'

6050

6155'

15.03°

248.38°

6055.29'

289.09'

6100

6202'

19.36°

255.19°

6100.18'

301.53'

6150

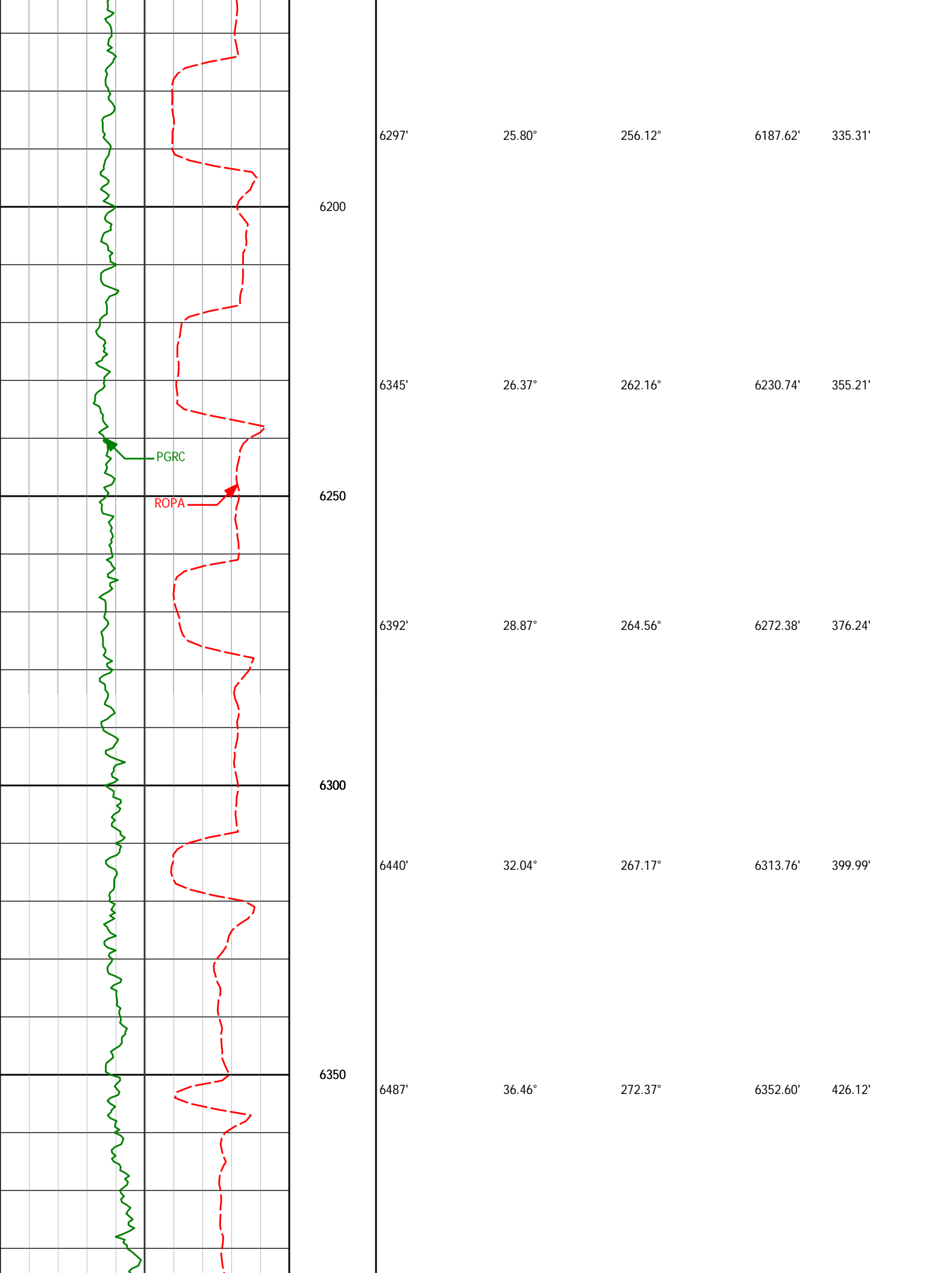
6250'

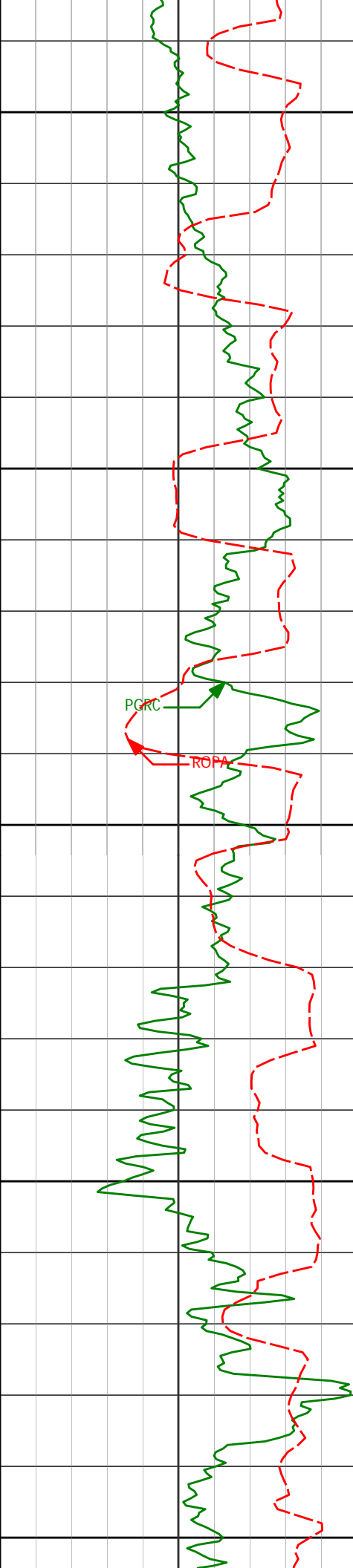
23.33°

253.17°

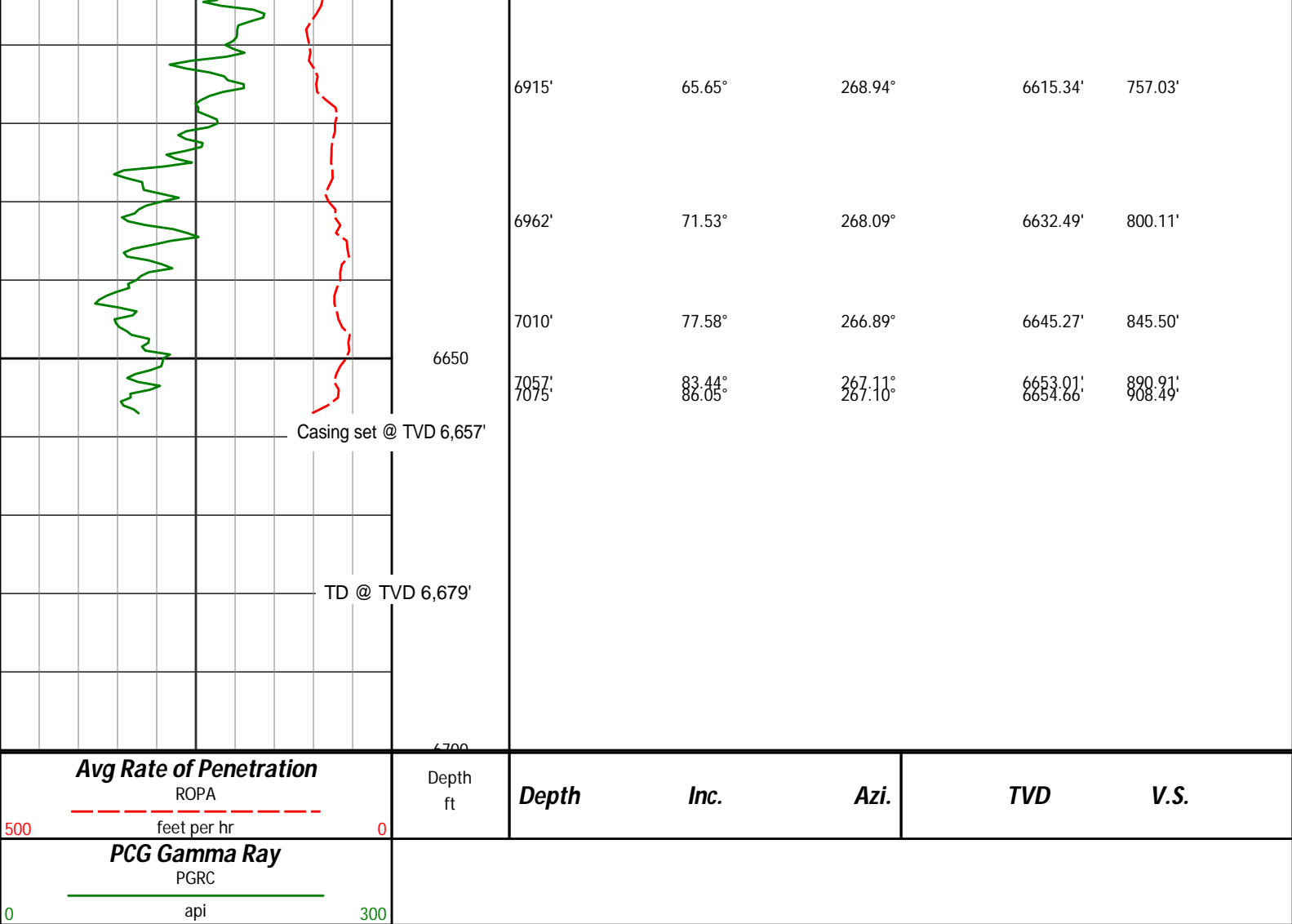
6144.88'

317.44'





6400	6535'	41.19°	275.07°	6389.99'	456.10'
	6582'	45.71°	275.50°	6424.10'	488.36'
6450	6630'	49.26°	273.77°	6456.54'	523.65'
	6677'	51.59°	271.86°	6486.48'	559.69'
6500	6725'	53.50°	270.54°	6515.67'	597.49'
	6772'	55.27°	270.57°	6543.04'	635.33'
6550	6820'	57.35°	269.82°	6569.67'	674.85'
	6867'	60.93°	269.59°	6593.77'	714.72'
6600					



HALLIBURTON

DIRECTIONAL SURVEY REPORT

Noble Energy
Wells Ranch USX AA23-64-1HN
Wattenberg
Weld Colorado
USA
CA-XX-0900392422

Surveys are tied into two non-Halliburton verified surveys taken while drilling the surface hole. Final survey is a straight-line projection to bit.

Measured Depth (feet)	Inclination (degrees)	Direction (degrees)	Vertical Depth (feet)	Latitude (feet)	Departure (feet)	Vertical Section (feet)	Dogleg (deg/100ft)
0.00	0.00	0.00	0.00	0.00 N	0.00 E	0.00	TIE-IN
366.00	1.00	184.40	365.98	3.18 S	0.25 W	-0.23	0.27
639.00	0.60	277.00	638.96	5.39 S	1.85 W	1.03	0.44
713.00	0.36	303.21	712.96	5.21 S	2.43 W	1.63	0.43
806.00	0.57	263.79	805.96	5.10 S	3.13 W	2.34	0.40
898.00	0.92	275.15	897.95	5.08 S	4.32 W	3.53	0.42
990.00	0.46	11.35	989.94	4.66 S	4.99 W	4.25	1.17
1082.00	0.72	253.29	1081.94	4.46 S	5.47 W	4.75	1.11
1176.00	0.37	299.38	1175.94	4.48 S	6.30 W	5.57	0.57
1270.00	0.62	303.64	1269.93	4.05 S	6.99 W	6.32	0.27
1363.00	0.50	330.03	1362.93	3.42 S	7.61 W	7.03	0.30
1457.00	1.12	261.89	1456.92	3.19 S	8.73 W	8.17	1.11
1552.00	2.38	346.52	1551.89	1.40 S	10.11 W	9.79	2.67
1646.00	4.58	359.04	1645.71	4.25 N	10.63 W	11.14	2.46
1741.00	8.42	346.18	1740.09	14.80 N	12.35 W	14.40	4.30

1836.00	9.14	346.02	1833.97	28.87 N	15.84 W	19.92	0.75
1931.00	12.07	349.07	1927.34	45.95 N	19.55 W	26.10	3.14
2026.00	15.20	347.95	2019.65	67.88 N	24.03 W	33.76	3.31
2121.00	15.61	348.27	2111.24	92.58 N	29.23 W	42.54	0.43
2216.00	15.83	347.10	2202.69	117.72 N	34.71 W	51.68	0.41
2310.00	14.91	345.92	2293.32	141.95 N	40.52 W	60.98	1.03
2405.00	16.64	352.73	2384.75	167.30 N	45.21 W	69.36	2.67
2500.00	15.24	352.19	2476.09	193.17 N	48.63 W	76.55	1.49
2595.00	16.36	352.02	2567.51	218.78 N	52.18 W	83.84	1.18
2690.00	15.03	349.19	2658.96	244.13 N	56.35 W	91.69	1.61
2785.00	16.74	350.38	2750.33	269.72 N	60.95 W	100.01	1.83
2880.00	14.99	349.45	2841.71	295.28 N	65.49 W	108.26	1.86
2975.00	16.98	348.89	2933.04	320.97 N	70.41 W	116.92	2.10
3070.00	17.06	347.49	3023.88	348.19 N	76.10 W	126.55	0.44
3165.00	15.93	346.65	3114.97	374.47 N	82.13 W	136.39	1.21
3260.00	15.03	346.68	3206.52	399.14 N	87.98 W	145.81	0.95
3354.00	13.49	347.07	3297.62	421.69 N	93.24 W	154.33	1.65
3449.00	14.19	345.72	3389.86	443.76 N	98.59 W	162.87	0.81
3544.00	12.84	343.65	3482.23	465.17 N	104.43 W	171.81	1.51
3639.00	12.68	349.45	3574.89	485.55 N	109.31 W	179.63	1.36
3734.00	14.36	351.74	3667.26	507.46 N	112.91 W	186.42	1.86
3829.00	15.57	352.49	3759.03	531.76 N	116.27 W	193.32	1.29
3924.00	15.95	352.99	3850.46	557.35 N	119.53 W	200.31	0.42
4019.00	17.55	350.38	3941.43	584.43 N	123.51 W	208.25	1.86
4114.00	16.09	349.14	4032.37	611.47 N	128.38 W	217.05	1.58
4208.00	14.64	349.28	4123.00	635.94 N	133.05 W	225.26	1.54
4303.00	15.56	350.93	4214.72	660.32 N	137.29 W	233.05	1.07
4398.00	13.52	342.89	4306.69	683.52 N	142.57 W	241.69	3.02
4493.00	11.30	343.06	4399.46	703.04 N	148.55 W	250.48	2.34
4587.00	10.89	341.61	4491.70	720.27 N	154.03 W	258.44	0.53
4682.00	8.71	343.68	4585.31	735.70 N	158.88 W	265.51	2.32
4778.00	5.79	340.80	4680.53	747.25 N	162.52 W	270.81	3.07
4873.00	3.64	349.58	4775.21	754.74 N	164.64 W	274.01	2.38
4968.00	1.62	303.04	4870.11	758.44 N	166.31 W	276.21	2.94
5062.00	1.67	305.64	4964.07	759.96 N	168.53 W	278.63	0.10
5157.00	0.46	328.78	5059.06	761.09 N	169.85 W	280.10	1.33
5253.00	0.36	308.88	5155.05	761.61 N	170.28 W	280.61	0.18
5347.00	0.76	334.72	5249.05	762.36 N	170.78 W	281.21	0.49
5443.00	0.43	115.45	5345.05	762.78 N	170.73 W	281.21	1.18
5538.00	1.00	61.13	5440.04	763.02 N	169.67 W	280.21	0.87
5633.00	1.17	82.50	5535.02	763.55 N	167.98 W	278.61	0.46
5728.00	1.05	83.63	5630.00	763.78 N	166.15 W	276.84	0.13
5823.00	1.03	77.16	5724.99	764.06 N	164.46 W	275.20	0.12
5918.00	0.57	105.21	5819.98	764.13 N	163.17 W	273.94	0.63
6012.00	0.14	116.06	5913.98	763.96 N	162.62 W	273.37	0.46
6060.00	4.83	241.60	5961.92	762.97 N	164.34 W	274.93	10.22
6107.00	10.50	244.63	6008.48	760.19 N	169.96 W	280.07	12.10
6155.00	15.03	248.38	6055.29	756.03 N	179.70 W	289.09	9.58
6202.00	19.36	255.19	6100.18	751.79 N	192.90 W	301.53	10.15
6250.00	23.33	253.17	6144.88	747.00 N	209.70 W	317.44	8.42
6297.00	25.80	256.12	6187.62	741.85 N	228.54 W	335.31	5.85
6345.00	26.37	262.16	6230.74	737.89 N	249.24 W	355.21	5.66
6392.00	28.87	264.56	6272.38	735.39 N	270.88 W	376.24	5.83
6440.00	32.04	267.17	6313.76	733.67 N	295.14 W	399.99	7.16
6487.00	36.46	272.37	6352.60	733.63 N	321.57 W	426.12	11.27
6535.00	41.19	275.07	6389.99	735.62 N	351.58 W	456.10	10.46
6582.00	45.71	275.50	6424.10	738.60 N	383.76 W	488.36	9.64
6630.00	49.26	273.77	6456.54	741.44 N	419.01 W	523.65	7.85
6677.00	51.59	271.86	6486.48	743.21 N	455.19 W	559.69	5.87
6725.00	53.50	270.54	6515.67	744.00 N	493.28 W	597.49	4.54
6772.00	55.27	270.57	6543.04	744.37 N	531.49 W	635.33	3.77
6820.00	57.35	269.82	6569.67	744.50 N	571.42 W	674.85	4.52
6867.00	60.93	269.59	6593.77	744.29 N	611.76 W	714.72	7.63
6915.00	65.65	268.94	6615.34	743.74 N	654.62 W	757.03	9.91
6962.00	71.53	268.09	6632.49	742.60 N	698.35 W	800.11	12.62
7010.00	77.58	266.89	6645.27	740.56 N	744.55 W	845.50	12.83
7057.00	83.44	267.11	6653.01	738.14 N	790.82 W	890.91	12.48
7075.00	86.05	267.10	6654.66	737.24 N	808.72 W	908.49	14.50
7248.00	90.40	270.76	6660.02	734.02 N	981.53 W	1078.94	3.29
7343.00	88.74	274.37	6660.74	738.28 N	1076.42 W	1173.42	4.18
7438.00	86.64	273.85	6664.57	745.08 N	1171.09 W	1268.06	2.28
7533.00	87.75	273.35	6669.22	751.04 N	1265.79 W	1362.60	1.28
7628.00	88.21	271.08	6672.57	754.71 N	1360.65 W	1456.97	2.44
7723.00	89.04	269.35	6674.85	755.07 N	1455.62 W	1550.96	2.02
7818.00	90.86	268.90	6674.93	753.62 N	1550.60 W	1644.69	1.97

7913.00	92.40	269.01	6672.22	751.89 N	1645.55 W	1738.34	1.63
8008.00	87.81	268.65	6672.04	749.95 N	1740.50 W	1831.98	4.85
8103.00	88.18	269.02	6675.36	748.02 N	1835.42 W	1925.58	0.56
8198.00	89.17	267.69	6677.55	745.30 N	1930.35 W	2019.08	1.74
8293.00	88.98	267.61	6679.09	741.40 N	2025.26 W	2112.38	0.22
8388.00	89.63	267.20	6680.24	737.11 N	2120.16 W	2205.60	0.81
8483.00	89.01	268.23	6681.37	733.32 N	2215.07 W	2298.93	1.26
8578.00	90.15	268.62	6682.06	730.71 N	2310.03 W	2392.47	1.27
8673.00	91.23	269.82	6680.91	729.42 N	2405.01 W	2486.22	1.70
8768.00	91.51	270.90	6678.64	730.02 N	2499.98 W	2580.24	1.17
8863.00	90.96	267.79	6676.59	728.93 N	2594.94 W	2674.01	3.32
8958.00	89.20	268.48	6676.46	725.84 N	2689.89 W	2767.46	1.99
9053.00	87.78	269.51	6678.96	724.17 N	2784.84 W	2861.13	1.84
9148.00	86.24	268.49	6683.92	722.51 N	2879.69 W	2954.70	1.95
9243.00	87.47	269.18	6689.13	720.58 N	2974.52 W	3048.22	1.49
9338.00	87.47	269.54	6693.32	719.52 N	3069.43 W	3141.93	0.38
9433.00	89.63	270.13	6695.73	719.25 N	3164.39 W	3235.81	2.36
9528.00	87.75	268.38	6697.90	718.01 N	3259.35 W	3329.56	2.70
9623.00	90.95	269.95	6698.98	716.63 N	3354.32 W	3423.28	3.76
9671.00	91.02	269.67	6698.15	716.47 N	3402.31 W	3470.73	0.61
9718.00	92.28	270.53	6696.80	716.55 N	3449.29 W	3517.21	3.26
9766.00	91.97	270.40	6695.02	716.94 N	3497.25 W	3564.71	0.70
9813.00	92.55	271.06	6693.16	717.54 N	3544.21 W	3611.24	1.87
9861.00	92.13	270.32	6691.20	718.12 N	3592.17 W	3658.76	1.78
9908.00	92.04	270.64	6689.49	718.51 N	3639.14 W	3705.27	0.70
10002.00	90.52	268.83	6687.39	718.07 N	3733.10 W	3798.15	2.51
10097.00	89.48	269.25	6687.39	716.48 N	3828.09 W	3891.87	1.19
10192.00	91.42	266.52	6686.65	712.97 N	3923.01 W	3985.23	3.53
10287.00	92.43	268.54	6683.46	708.88 N	4017.86 W	4078.45	2.39
10382.00	92.37	269.82	6679.47	707.52 N	4112.76 W	4172.12	1.35
10477.00	92.56	270.33	6675.38	707.65 N	4207.68 W	4266.01	0.57
10572.00	89.97	270.54	6673.29	708.37 N	4302.64 W	4360.05	2.74
10667.00	89.11	269.37	6674.05	708.29 N	4397.64 W	4454.00	1.53
10762.00	88.98	271.02	6675.64	708.62 N	4492.62 W	4547.99	1.75
10857.00	89.66	272.57	6676.76	711.60 N	4587.56 W	4642.34	1.78
10952.00	90.31	274.13	6676.79	717.16 N	4682.40 W	4736.96	1.77
11059.00	88.49	274.61	6677.91	725.31 N	4789.08 W	4843.67	1.75
11126.00	88.49	274.61	6679.67	730.69 N	4855.84 W	4910.50	0.01

CALCULATION BASED ON MINIMUM CURVATURE METHOD

SURVEY COORDINATES RELATIVE TO WELL SYSTEM REFERENCE POINT
TVD VALUES GIVEN RELATIVE TO DRILLING MEASUREMENT POINT

VERTICAL SECTION RELATIVE TO WELL HEAD
VERTICAL SECTION IS COMPUTED ALONG A DIRECTION OF 278.47 DEGREES (GRID)
A TOTAL CORRECTION OF 7.75 DEG FROM MAGNETIC NORTH TO GRID NORTH HAS BEEN APPLIED

HORIZONTAL DISPLACEMENT IS RELATIVE TO THE WELL HEAD.
HORIZONTAL DISPLACEMENT(CLOSURE) AT 11126.00 FEET
IS 4910.50 FEET ALONG 278.56 DEGREES (GRID)