

**CHEVRON - MID-CONTINENT EBIZ**  
**760 Horizon Dr**  
**Grand Junction, CO 81506**

**SKR 598-25-BV-04**

**Interval 1**  
**Garfield County, Colorado**

**Sales Order: 900659002**

## **Post Job Report**

**For: Kieth Hejl**  
**Date: Saturday, August 10, 2013**

Notice: Although the information contained in this report is based on sound engineering practices, the copyright owner(s) does (do) not accept any responsibility whatsoever, in negligence or otherwise, for any loss or damage arising from the possession or use of the report whether in terms of correctness or otherwise. The application, therefore, by the user of this report or any part thereof, is solely at the user's own risk.

**HALLIBURTON**

## Table of Contents

1.0	Well Information .....	3
1.1	Customer Information .....	3
1.2	Pipe Information .....	4
1.3	Perforation Intervals .....	4
2.0	Actual Stage Summary .....	5
2.1	Stage Summary .....	5
3.0	Performance Highlights.....	8
3.1	Job Summary.....	8
3.2	Job Event Log .....	9
4.0	Attachments.....	10
4.1	Treating Chart .....	10
4.2	Chemical Chart .....	11
4.3	Averages Chart.....	12
4.4	Net Pressure Plot .....	13

**1.0 WELL INFORMATION****1.1 Customer Information**

<b>Customer</b>	CHEVRON - MID-CONTINENT EBIZ
<b>Sales Order</b>	900659002
<b>Well Name</b>	SKR
<b>Rig Type</b>	None
<b>Interval</b>	1
<b>Well Number</b>	598-25-BV-04
<b>Job Date</b>	10-Aug-2013
<b>County</b>	Garfield
<b>State</b>	Colorado
<b>Country</b>	United States of America
<b>H2S Present</b>	Unknown
<b>CO2 Present</b>	Unknown
<b>Customer Representative</b>	Kieth Hejl
<b>Halliburton Representative</b>	Swanson

## 1.2 Pipe Information

Equipment	Top MD ft	Bottom MD ft	OD in	ID in	Weight lb/ft
Surface Pipe	0.0	50.0	5.000	4.000	
Casing	0.0	4856.0	4.500	4.000	11.60

## 1.3 Perforation Intervals

Top MD ft	Bottom MD ft	Number of Shots	Perf Density spf	Perf Diameter in
4666.0	4806.0	27	0.2	0.340

## 2.0 ACTUAL STAGE SUMMARY

### 2.1 Stage Summary

Stage Number	Stage Time	Start Time	End Time	Time min	Pump Time min	Max Treat Pr psi	Max Slurry Rate bpm
1	10-Aug-13 17:08:47	17:07:26	10-Aug-13 17:08:47	1.38	1.33	6300	55.8
2	10-Aug-13 17:12:31	17:08:48	10-Aug-13 17:12:31	3.74	3.73	4465	61.3
3	10-Aug-13 17:42:25	17:12:32	10-Aug-13 17:42:25	29.90	29.90	4577	63.7
4	10-Aug-13 18:02:17	17:42:26	10-Aug-13 18:02:17	19.87	19.87	4366	63.7
5	10-Aug-13 18:16:18	18:02:18	10-Aug-13 18:16:18	14.02	14.02	4519	64.4
6	10-Aug-13 18:19:41	18:16:19	10-Aug-13 18:19:41	3.38	3.20	4543	63.7
7	10-Aug-13 18:19:55	18:19:42	10-Aug-13 18:19:55	0.23	0.00	0	0.0

Stage Number	Stage Time	Max Wellhead Rate bpm	Max Prop Conc lb/gal	Max Slurry Prop Conc lb/gal	Avg Treating Pressure psi	Avg Clean Rate bpm	Avg Slurry Rate bpm
1	10-Aug-13 17:08:47	55.8	1.14	1.14	3192	44.8	45.1
2	10-Aug-13 17:12:31	61.3	0.88	0.88	4121	54.6	55.5
3	10-Aug-13 17:42:25	63.7	0.61	0.62	4227	61.3	62.8
4	10-Aug-13 18:02:17	63.7	0.83	0.84	4287	61.5	63.6

Stage Number	Stage Time	Max Wellhead Rate bpm	Max Prop Conc lb/gal	Max Slurry Prop Conc lb/gal	Avg Treating Pressure psi	Avg Clean Rate bpm	Avg Slurry Rate bpm
5	10-Aug-13 18:16:18	64.4	1.05	1.05	4164	59.1	61.7
6	10-Aug-13 18:19:41	63.7	0.25	0.00	3899	54.0	54.0
7	10-Aug-13 18:19:55	0.0	0.00	0.00	0	0.0	0.0

Stage Number	Stage Time	Avg Wellhead Rate bpm	Avg Slurry Prop Conc lb/gal	Avg Hydraulic Horsepower hp	Clean Volume gal	Slurry Volume gal	Wellhead Volume gal
1	10-Aug-13 17:08:47	45.1	0.84	3524	2563	2575	2523
2	10-Aug-13 17:12:31	55.5	0.37	5607	8578	8720	8720
3	10-Aug-13 17:42:25	62.8	0.53	6500	76955	78816	78816
4	10-Aug-13 18:02:17	63.6	0.76	6682	51300	53068	53068
5	10-Aug-13 18:16:18	61.7	0.98	6300	34806	36350	36350
6	10-Aug-13 18:19:41	54.0	0.00	5163	7264	7264	7264
7	10-Aug-13 18:19:55	0.0	0.00	0	0	0	0
Total					181466	186793	186741

Stage Number	Stage Time	Prop Mass 100*lb
1	10-Aug-13 17:08:47	2.80

Stage Number	Stage Time	Prop Mass 100*lb
2	10-Aug-13 17:12:31	31.26
3	10-Aug-13 17:42:25	410.02
4	10-Aug-13 18:02:17	389.49
5	10-Aug-13 18:16:18	340.13
6	10-Aug-13 18:19:41	0.00
7	10-Aug-13 18:19:55	0.00
Total		1173.71

### 3.0 PERFORMANCE HIGHLIGHTS

#### 3.1 Job Summary

Start Time	10-Aug-13 17:00:00	
End Time	10-Aug-13 18:19:55	

SKR 598-25-BV-04 Stage 1		
8/10/2013		
Engineering Notes		
Engineer on Location	Drew Mogck	
ISDP	1598	psi
Initial Pressure(Breakdown)	6300	psi
Max Pressure	6300	psi
Average Pressure	4275	psi
Max Rate	64.38	bpm
Average Rate	63.5	bpm
Proppant Design Volume	113,288	lbs
Proppant in Formation	114,000	lbs
FR-66 Used	37	gals
BE-7 Used	165	gals
SandWedge WF	126	lbs
SCW-4212 Used	22	gals
Clean Volume	4321	bbls
Start Time	5:07 PM	HH:MM
End Time	6:19 PM	HH:MM
Job Notes:		
Pump neutraled out in .5 ppg and 1 ppg stage due to losing pod pressure. Got rate back up both times and pumped job to completion.		

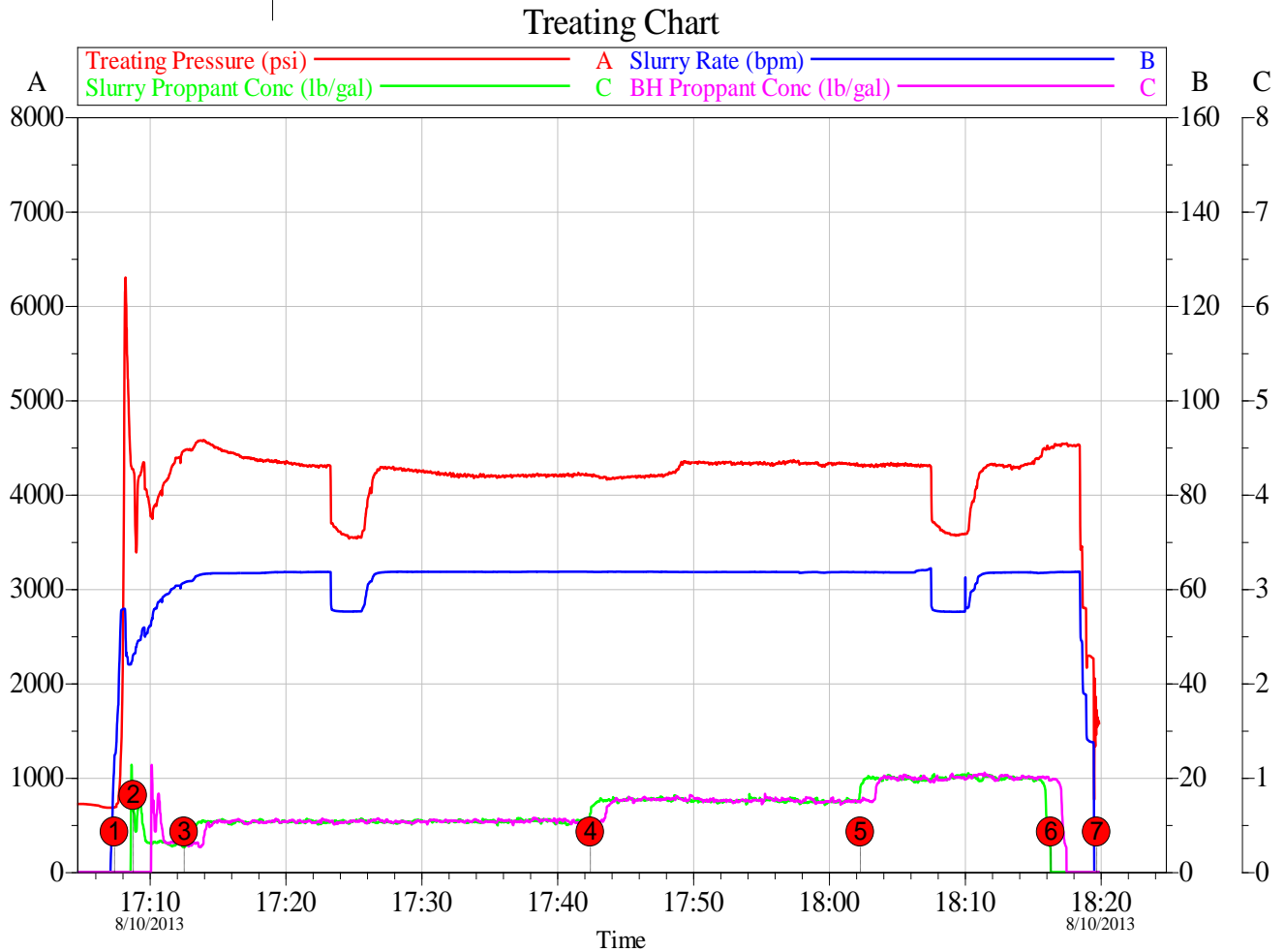


**3.2 Job Event Log**

Stage Number	Event Number	Time	Description	Comment	Treating Pressure psi	Slurry Rate bpm	N2 Pressure psi	Job Slurry Vol gal
	1	10-Aug-13 17:00:00	Start Job	Starting Job				
1		17:07:25	Stage 1	Pad	690	24.7	8	17
		17:07:26	Start Averaging	Start Avg Trt 1	690	24.9	7	35
	2	17:08:13	Break Formation	Break Formation = 6300 psi, 52.57 bpm	6299	52.6	8	1503
2		17:08:48	Stage 2	Proppant Laden Fluid	4267	46.0	8	2575
3		17:12:32	Stage 3	Proppant Laden Fluid	4466	61.3	9	11295
	3	17:23:20	Other	Lost pod pressure on a pump. Neutraled out	3881	63.6	13	40008
4		17:42:26	Stage 4	Proppant Laden Fluid	4209	63.6	227	90111
5		18:02:18	Stage 5	Proppant Laden Fluid	4306	63.6	229	143179
6		18:16:19	Stage 6	Flush	4500	63.5	231	179529
	4	18:19:33	ISIP	ISDP=1598 psi	1650	0.0	232	186793
7		18:19:42	Stage 7	Shut-In	1718	0.0	232	186793
		18:19:55	End Averaging	End Avg Trt 1	1583	0.0	232	186793
	5	18:19:59	End Job	Ending Job	1583	0.0	232	186793

## 4.0 ATTACHMENTS

### 4.1 Treating Chart

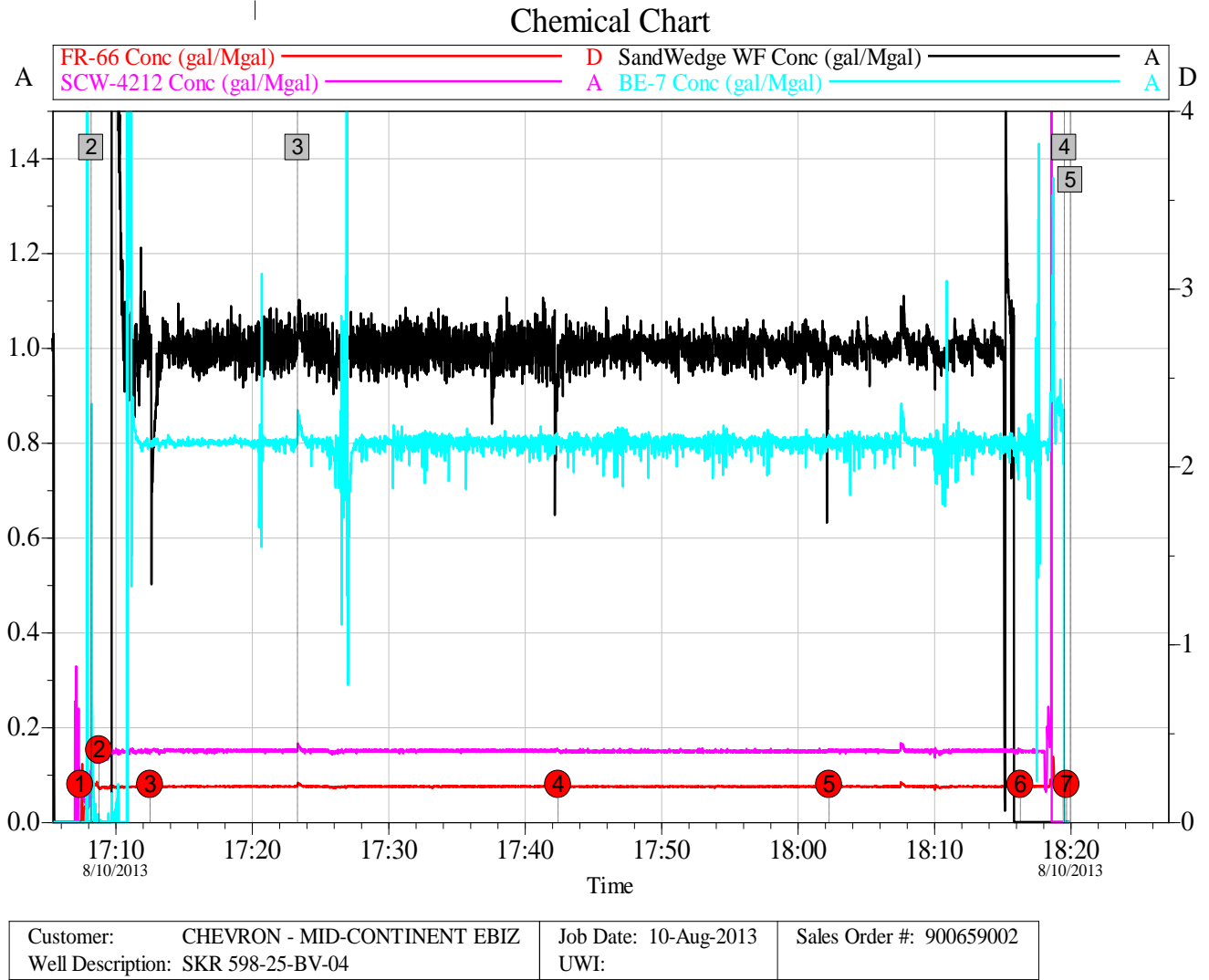


Customer: CHEVRON - MID-CONTINENT EBIZ  
Well Description: SKR 598-25-BV-04

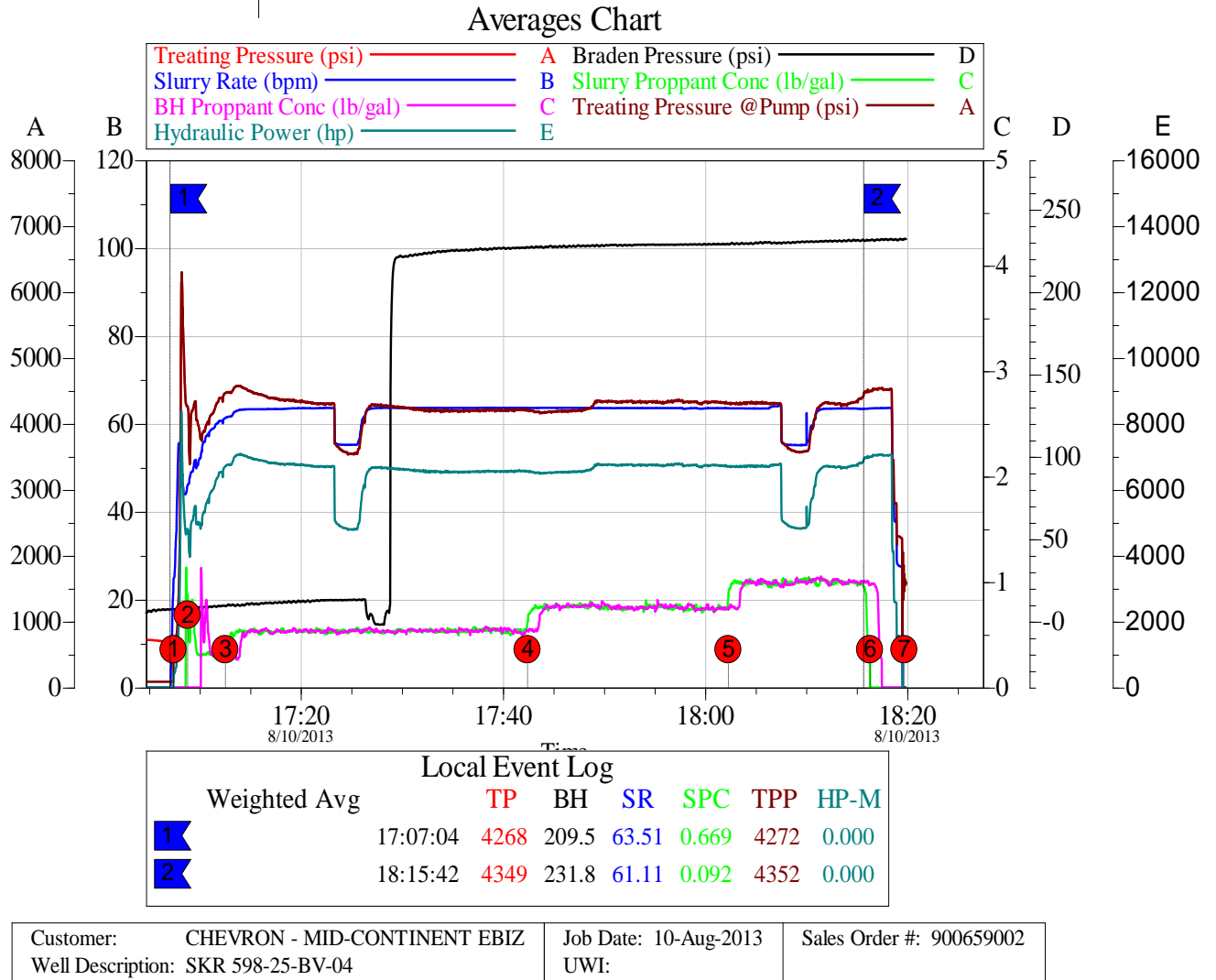
Job Date: 10-Aug-2013  
UWI:

Sales Order #: 900659002

## 4.2 Chemical Chart



## 4.3 Averages Chart



## 4.4 Net Pressure Plot



Customer: CHEVRON - MID-CONTINENT EBIZ  
Well Description: SKR 598-25-BV-04

Job Date: 10-Aug-2013  
UWI:

Sales Order #: 900659002