

WELLBORE DIAGRAM

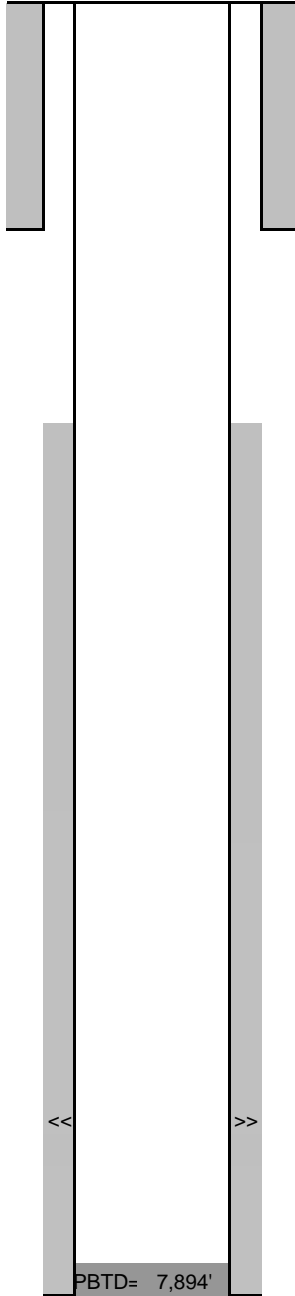
Directions: CR 74 @ CR 23, North 1.75 miles, West into

Bayswater E & P Hirsch 19-24

NENE Sec 26-T7N-R67W
SHL: 459' FNL, 254' FEL
BHL: 1211' FSL, 1218' FWL
Weld County CO
05-123-36414

Updated
3/25/2013
MMA

G.L.= 4953
K.B.= 4969
16



8-5/8" 24# set at 755'
Cmt'd w/ 274 sx to Surf.

TOC:1846'
CBL

<<

>>

Codell: 7764'-7781', 4spf, 68 holes
Frac on 3/25/2013 with 267,403 gals of slickwater and 180,120 lbs of 30/50.

PBTD= 7,894'

TD MD= 7,922'

TD VD= 7,451'

4 1/2", 11.6# NW-80 LTC 7909' (7-7/8" O.H.)

Cmt'd w/ 860 sx