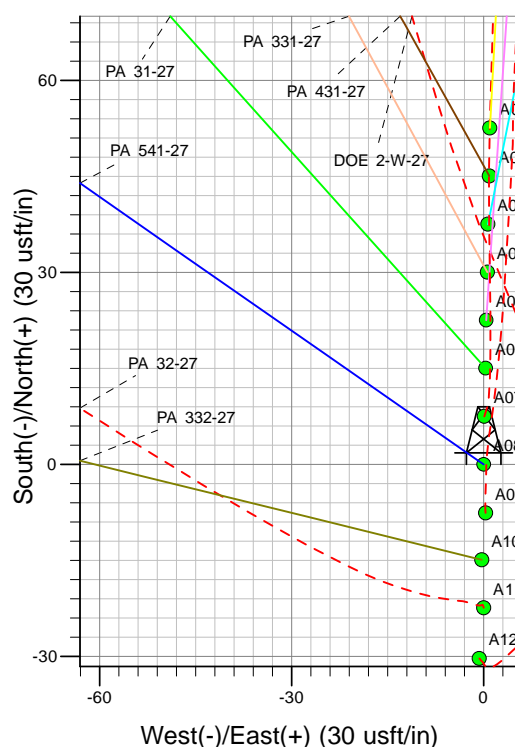
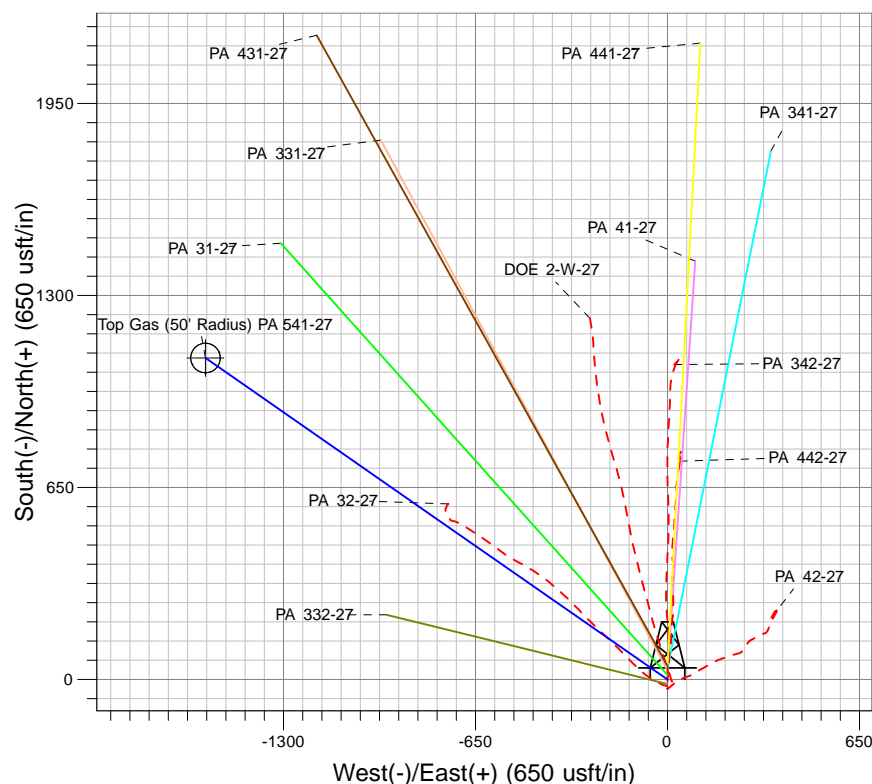
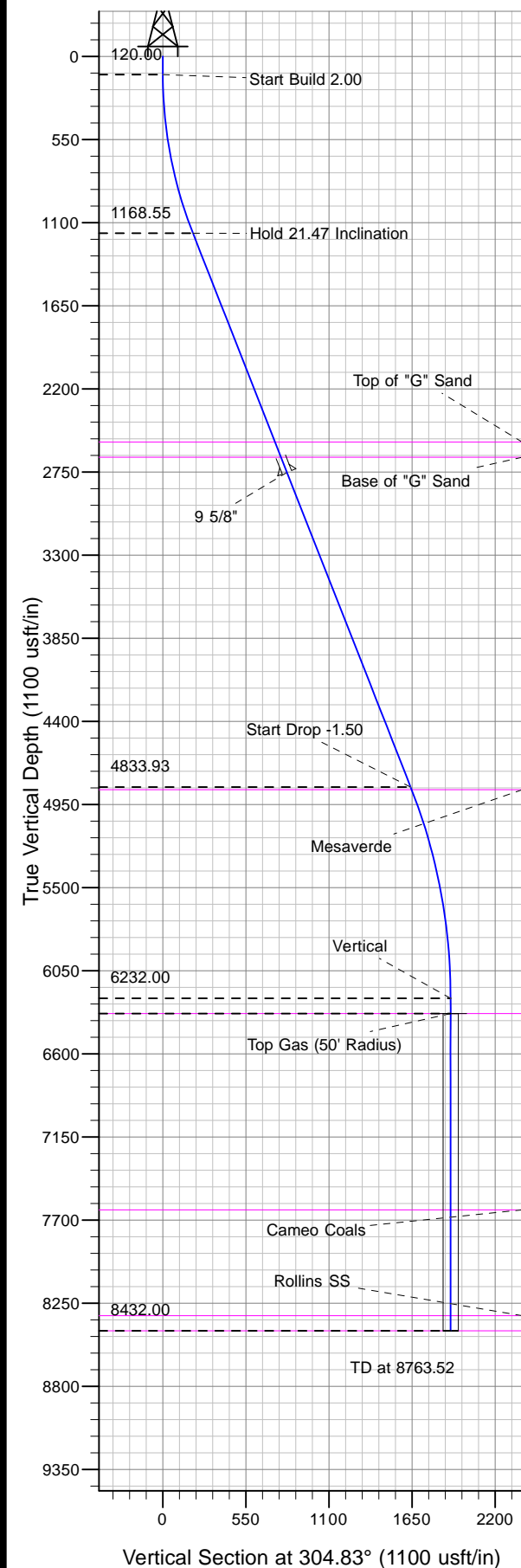




Well Name: PA 541-27
Surface Location: DOE 2-W-27 Pad
North American Datum 1983 , US State Plane 1983, Colorado Central Zone
Ground Elevation: 5856.00

+N/-S	+E/-W	Northing	Easting	Latitude	Longitude	Slot
0.00	0.00	1615057.80	2300864.10	39.49593	-107.97775	A08

KELLY BUSHING @ 5882.00usft (Nabors 577 (26' RKB) kjs)



Project: PA 27-06S-095W
Site: DOE 2-W-27 Pad
Well: PA 541-27
Design #1 13May13 kjs

Azimuths to True North
Magnetic North: 11.45°
Magnetic Field
Strength: 53051.5snT
Dip Angle: 65.99°
Date: 12/31/2004
Model: IGRF2000

ANNOTATIONS

TVD	MD	Inc	Azi	+N/-S	+E/-W	VSect	Departure	Annotation
120.00	120.00	0.00	0.00	0.00	0.00	0.00	0.00	Start Build 2.00
1168.55	1193.50	21.47	304.83	113.54	-163.17	198.79	198.79	Hold 21.47 Inclination
4833.93	5132.19	21.47	304.83	936.96	-1346.48	1640.40	1640.40	Start Drop -1.50
6232.00	6563.52	0.00	0.00	1088.35	-1564.04	1905.45	1905.45	Vertical
6332.00	6663.52	0.00	0.00	1088.35	-1564.04	1905.45	1905.45	Top Gas
8432.00	8763.52	0.00	0.00	1088.35	-1564.04	1905.45	1905.45	TD at 8763.52