

BILL BARRETT CORPORATION E-BILL
DO NOT MAIL-1099 18TH ST,STE 2300W
DENVER, Colorado

Greasewood 07-17H

Cade 24

Post Job Summary

Cement Intermediate Casing

Date Prepared: 10/11/2013
Version: 1

Service Supervisor: FANTASIA, JOSEPH

Submitted by: LANSDALE, JUSTIN

HALLIBURTON

Wellbore Geometry

Job Tubulars					MD		TVD		Shoe Joint Length ft
Type	Description	Size in	ID in	Wt lbm/ft	Top ft	Bottom ft	Top ft	Bottom ft	
Casing	9 5/8" Surface Casing	9.63	8.921	36.00	0.00	818.00			
Open Hole Section	8 3/4" Open Hole		8.750		818.00	6,612.00	818.00	6,257.00	
Casing	7" Intermediate Casing	7.00	6.276	26.00	0.00	6,654.00	0.00	6,257.00	42.00

HALLIBURTON

Pumping Schedule

Stage /Plug #	Fluid #	Fluid Type	Fluid Name	Surface Density lbm/gal	Avg Rate bbl/min	Surface Volume	Downhole Volume
1	1	Spacer	TUNED SPACER III	11.50	4.00	40.0 bbl	40.0 bbl
1	2	Cement Slurry	ExtendaCem B1	12.50	6.00	405.0 sacks	405.0 sacks
1	3	Cement Slurry	EXPANDACEM B1	13.50	4.00	175.0 sacks	175.0 sacks

Fluids Pumped

Stage/Plug # 1 Fluid 1: TUNED SPACER III
TUNED SPACER III - SBM (483826)
146.5 Barite
lbm/bbl

Fluid Density: 11.50 lbm/gal
Fluid Volume: 40.00 bbl

Stage/Plug # 1 Fluid 2: ExtendaCem B1
ECONOCEM (TM) SYSTEM
5 lbm Silicalite Compacted

Fluid Weight: 12.50 lbm/gal
Slurry Yield: 1.97 ft3/sack
Total Mixing Fluid: 10.72 Gal
Surface Volume: 405.0 sacks
Sacks: 405.0 sacks

Stage/Plug # 1 Fluid 3: EXPANDACEM B1
FRACCEN (TM) SYSTEM

Fluid Weight: 13.50 lbm/gal
Slurry Yield: 1.74 ft3/sack
Total Mixing Fluid: 8.30 Gal
Surface Volume: 175.0 sacks
Sacks: 175.0 sacks

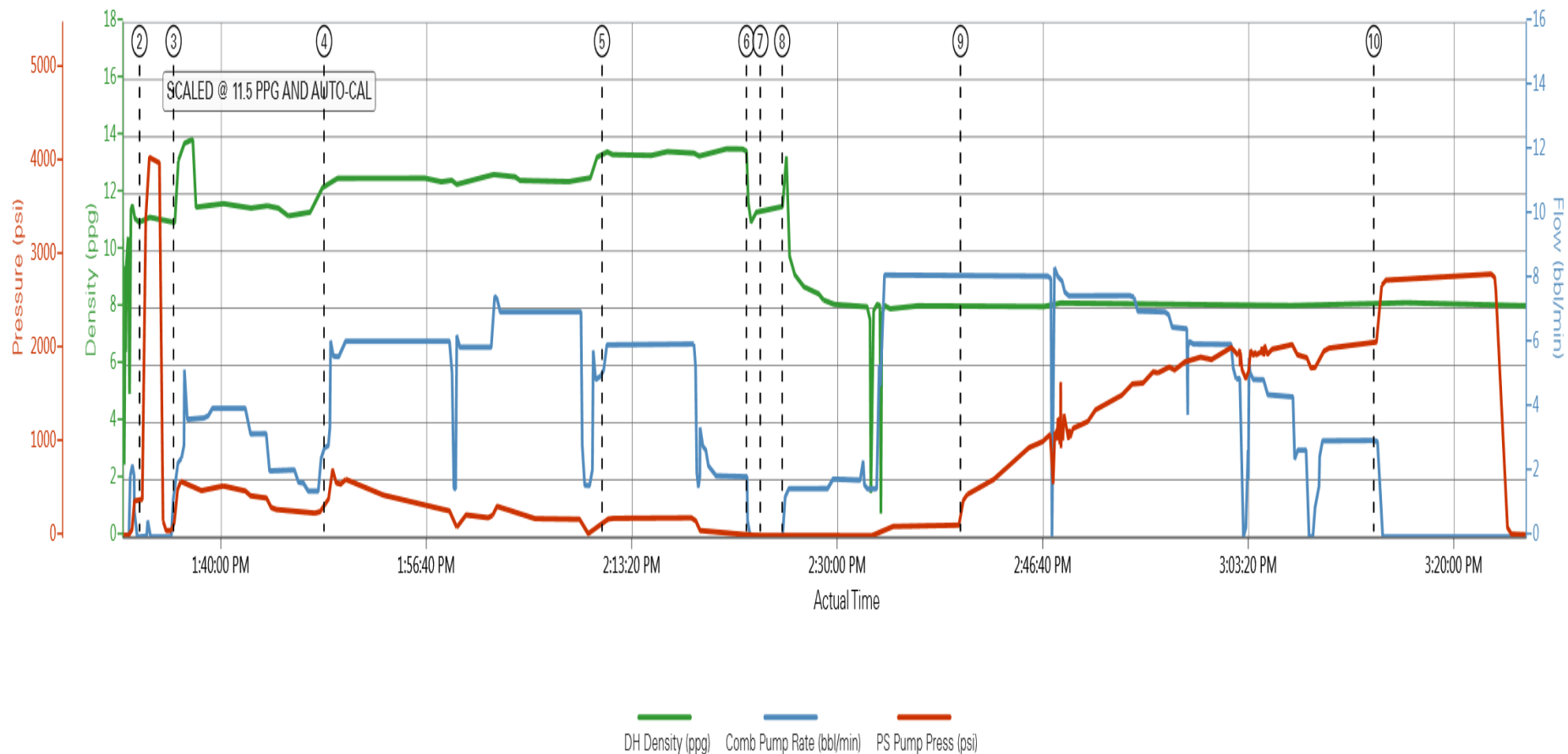
Stage/Plug # 1 Fluid 4: MUD
DISPLACEMENT

Fluid Density: 9.60 lbm/gal

HALLIBURTON

Data Acquisition

Custom Results



- ① Start Job ⑥ Shutdown ⑩ End Job
- ② Test Lines ⑦ Drop Top Plug
- ③ Pump Spacer 1 ⑧ Pump Displacement
- ④ Pump Cement ⑨ Displ Reached Cmnt
- ⑤ Pump Tail Cement ⑪ Bump Plug

▲ Halliburton | iCem Service®

Created: 2013-09-02 04:38:02, Version: 1.4.96

Edit

HALLIBURTON

Service Supervisor Reports

Job Log

Date/Time	Chart #	Activity Code	Pump Rate	Cum Vol	Pump		Pressure (psig)		Comments
09/02/2013 10:00		Arrive at Location from Service Center							ARRIVE AT LOCATION AND PERFORM HAZARD HUNT AND SITE ASSESSMENT WITH CREW. RIG RUNNING CASING.
09/02/2013 10:15		Assessment Of Location Safety Meeting							
09/02/2013 13:00		Start Job							PERFORM PRE JOB SAFETY MEETING WITH ALL PRESENT PERSONELL.
09/02/2013 13:33		Test Lines						4020.0	PRESSURE TEST LINES TO 4000 PSI.
09/02/2013 13:36		Pump Spacer 1	5	40				270.0	40 BBLS TUNED SPACER MIXED AT 11.5 PPG
09/02/2013 13:48		Pump Lead Cement	6	142				380.0	405 SKS ECONOCHEM MIXED AT 12.5 PPG USING RIG WATER
09/02/2013 14:11		Pump Tail Cement	6	54				150.0	175 SKS FRACCHEM MIXED AT 13.5 PPG USING RIG WATER
09/02/2013 14:22		Shutdown							
09/02/2013 14:23		Drop Top Plug							TOP PLUG PRELOADED
09/02/2013 14:25		Pump Displacement	8					320.0	GOOD RETURNS THROUGHOUT. CEMENT TO SURFACE AT 240 BBLS INTO 253 BBLS OF TOTAL DISPLACEMENT. APPROX 40 BBLS OF SPACER AND 13 BBLS CEMENT TO SURFACE.
09/02/2013 15:13		Bump Plug	3					2077.0	PLUG LANDED AT 2077 PSI. BRING PRESSURE TO 2800 PSI AND HOLD FOR 10 MIN.
09/02/2013 15:23		Check Floats							FLOATS HELD
09/02/2013 15:30		End Job							
09/02/2013 15:45		Post-Job Safety Meeting (Pre Rig-Down)							PERFORM PRE RIG DOWN SAFETY MEETING WITH CREW PRIOR TO RIGGING DOWN.

The Road to Excellence Starts with Safety

Sold To #: 343492	Ship To #: 3098667	Quote #:	Sales Order #: 900714446
Customer: BILL BARRETT CORPORATION E-BILL		Customer Rep: Randolph, Glen	
Well Name: Greasewood		Well #: 07-17H	API/UWI #: 05-123-37200
Field: WATTENBURG	City (SAP): GREELEY	County/Parish: Weld	State: Colorado
Lat: N 40.401 deg. OR N 40 deg. 24 min. 2.016 secs.		Long: W 104.519 deg. OR W -105 deg. 28 min. 53.256 secs.	
Job Purpose: Cement Intermediate Casing			
Well Type: Development Well		Job Type: Cement Intermediate Casing	
Sales Person: GREGORY, JON		Srv Supervisor: FANTASIA, JOSEPH	MBU ID Emp #: 485445

Job Personnel

HES Emp Name	Exp Hrs	Emp #	HES Emp Name	Exp Hrs	Emp #	HES Emp Name	Exp Hrs	Emp #
ALVARADO, JOSE	7.0	505918	FANTASIA, JOSEPH Brandon	7.0	485445	GRIFFITHS, ZACHARY	7.0	123456
HINKLE, BRADLEY Dean	7.0	512123	ROBERTSON, TROY	7.0	123456			

Equipment

HES Unit #	Distance-1 way	HES Unit #	Distance-1 way	HES Unit #	Distance-1 way	HES Unit #	Distance-1 way
11338223	60 mile	11398319	60 mile	11410470C	60 mile	11764052	60 mile
11764739	60 mile						

Formation Name					Date	Time	Time Zone
Formation Depth (MD)	Top		Bottom		Called Out	02 - Sep - 2013	03:00 MST
Form Type		BHST			On Location	02 - Sep - 2013	10:00 MST
Job depth MD	6654. ft	Job Depth TVD	6257. ft		Job Started	02 - Sep - 2013	13:00 MST
Water Depth		Wk Ht Above Floor			Job Completed	02 - Sep - 2013	15:45 MST
Perforation Depth (MD)	From		To		Departed Loc	02 - Sep - 2013	17:00 MST

Well Data

Description	New / Used	Max pressure psig	Size in	ID in	Weight lbm/ft	Thread	Grade	Top MD ft	Bottom MD ft	Top TVD ft	Bottom TVD ft
8 3/4" Open Hole				8.75				818.	6612.	818.	6257.
7" Intermediate Casing	New		7.	6.276	26.	LTC	HCP110	.	6654.	.	6257.
9 5/8" Surface Casing	Unknown		9.625	8.921	36.		J-55	.	818.		

Fluid Data

Stage/Plug #: 1

Fluid #	Stage Type	Fluid Name	Qty	Qty uom	Mixing Density lbm/gal	Yield ft3/sk	Mix Fluid Gal/sk	Rate bbl/min	Total Mix Fluid Gal/sk
---------	------------	------------	-----	---------	------------------------	--------------	------------------	--------------	------------------------

1	TUNED SPACER III	TUNED SPACER III - SBM (483826)	40.00	bbl	11.5	7.21	53.96	4.0	
	146.5 lbm/bbl	BARITE, 100 LB SK (100003680)							
	36.09 gal/bbl	FRESH WATER							
2	ExtendaCem B1	ECONOCEM (TM) SYSTEM (452992)	405.0	sacks	12.5	1.97	10.72	6.0	10.72
	5 lbm	SILICALITE - COMPACTED, 50 LB SK (100012223)							
	10.72 Gal	FRESH WATER							
3	EXPANDACEM B1	FRACCEM (TM) SYSTEM (452963)	175.0	sacks	13.5	1.74	8.3	4.0	8.3
	8.3 Gal	FRESH WATER							
4	MUD DISPLACEMENT			bbl	9.6			6.0	
Rates									
Circulating		Mixing		Displacement		Avg. Job			
Cement Left In Pipe	Amount	42 ft	Reason	Shoe Joint					
Frac Ring # 1 @	ID	Frac ring # 2 @	ID	Frac Ring # 3 @	ID	Frac Ring # 4 @	ID		
The Information Stated Herein Is Correct				Customer Representative Signature					

