
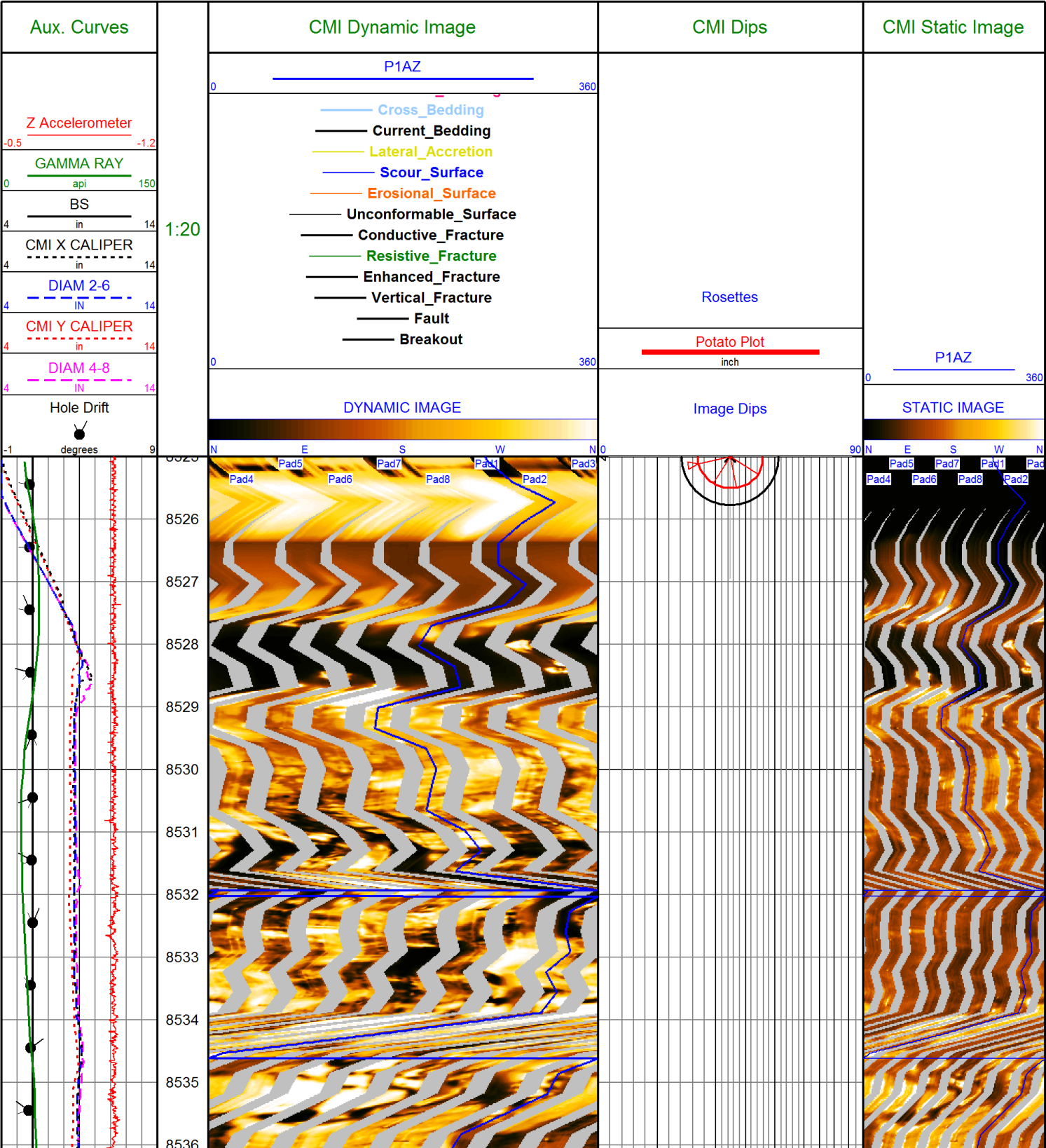
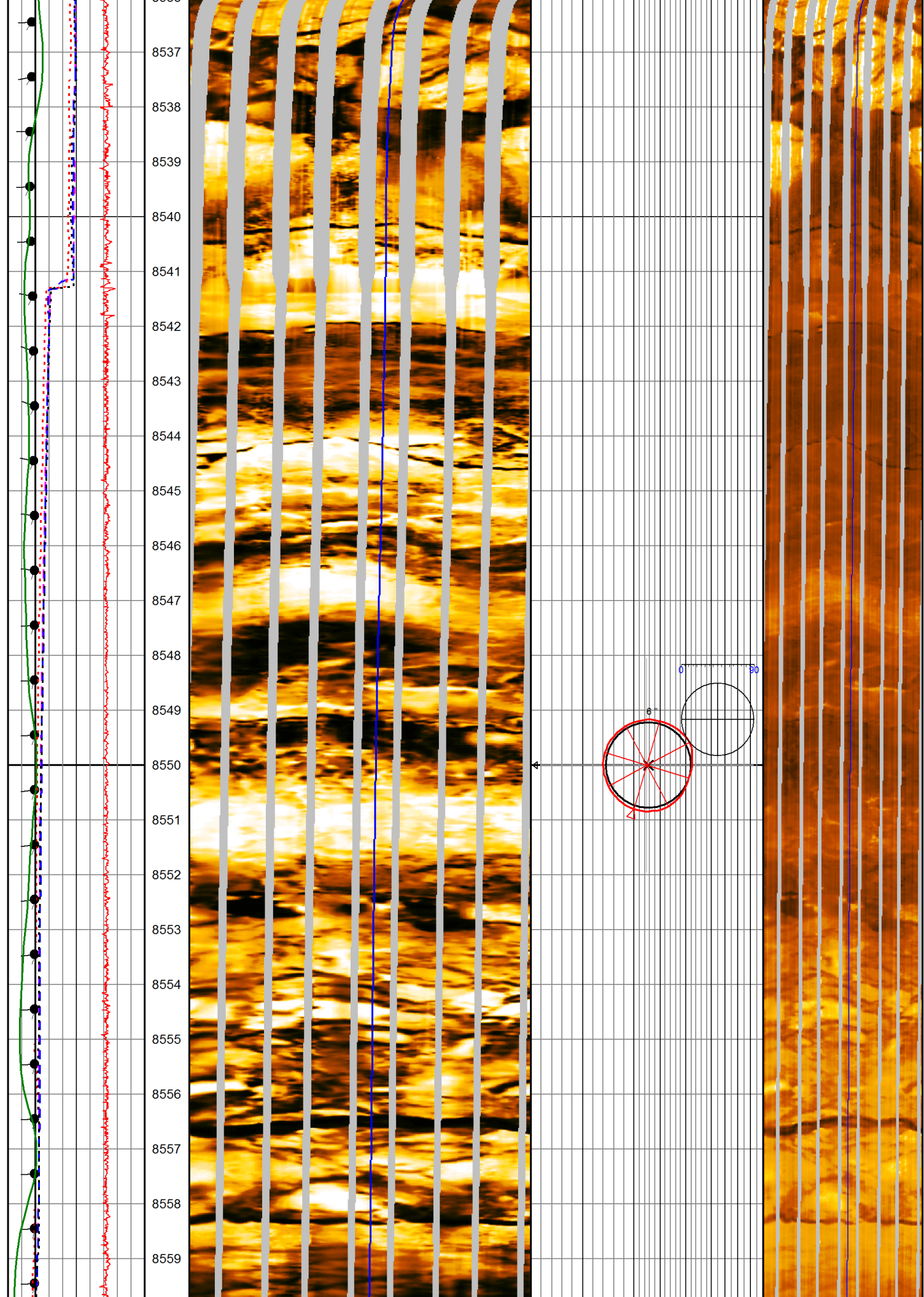
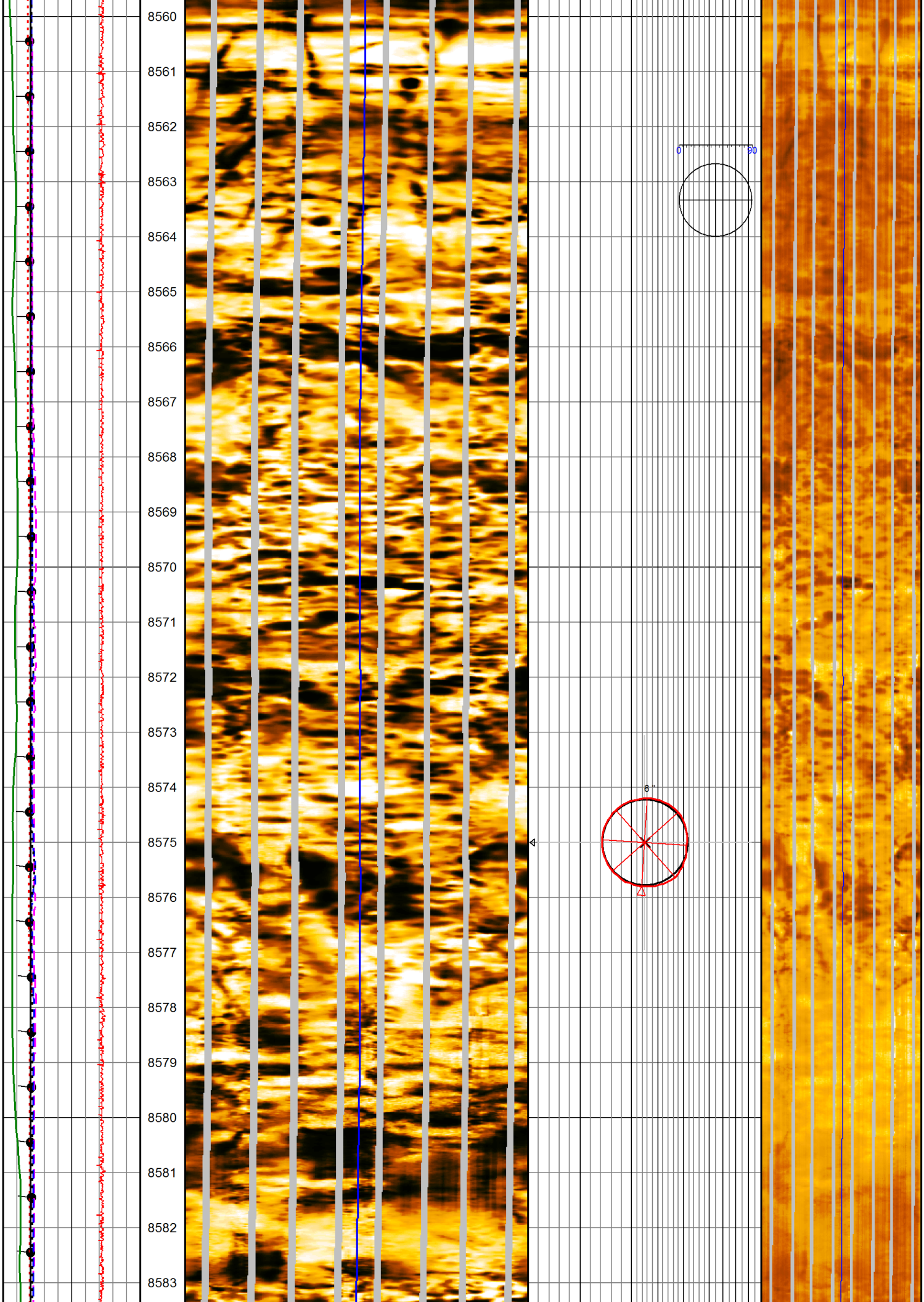


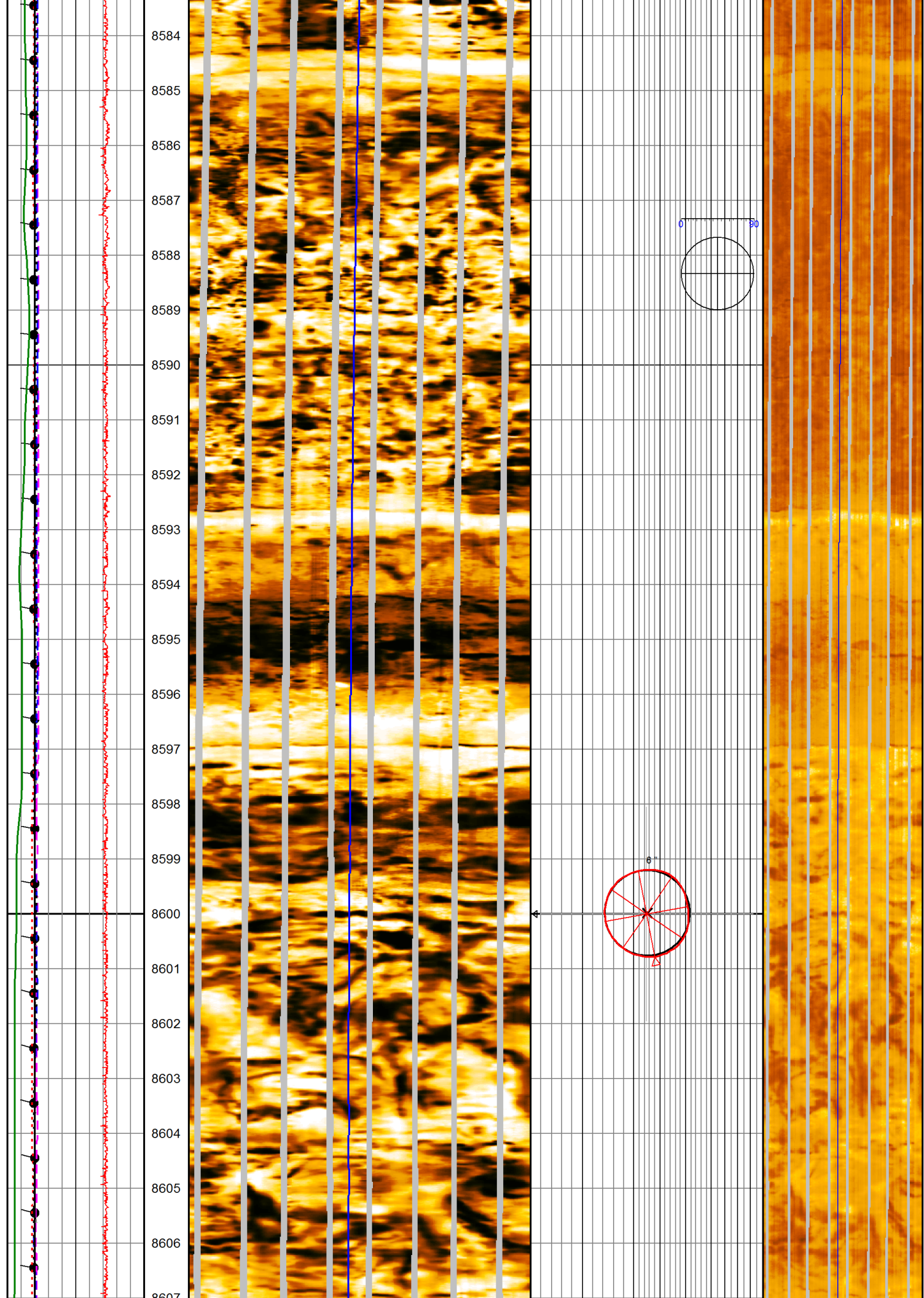
<div></div> <div>Compact Micro-Imager Image Only</div>			
COMPANY: KINDER MORGAN CO2 Co. L.P			
WELL: DOE CANYON #15			
FIELD: DOE CANYON			
COUNTY: DOLORES		STATE: COLORADO	
Location: 1069' FSL & 1610' FWL SEC 11, TWP 40N, RGE 18W 37.74347		Latitude: 37.74347	
API: 05-033-06176		Longitude: -108.81942	
Licence:		Other Services: COMPENSATED NEUTRON COMPENSATED DENSITY DUAL LATEROLOG MICRO-RESISTIVITY LOG SPECTRAL GAMMA RAY	
Permanent Datum: GL		Elevation: 7227.00 ft	
Log measured from KB 23.00 ft		above Permanent Datum	
Drilling measured from KB		Elevations: K.B.: 7250.00 ft D.F.: 7250.00 ft G.L.: 7227.00 ft	
Date		24-AUG-2013	
Run Number		ONE	
Service Order		3529587	
Depth Driller		8710.00 ft	
Depth Logger		8705.00 ft	
First Reading		8703.00 ft	
Last Reading		8525.00 ft	
Casing Driller		7.00 in @ 8534.00 ft	
Casing Logger		8525.00 ft	
Bit Size		6.00 in	
Hole Fluid Type		H2O	
Density		Viscosity 9.40 g/c3 29.00 CP	
pH		Fluid Loss 7.00	
Sample Source		PIT	
Rm @ Measured Temperature		0.95 ohm-m @ 86.00° F	
Rmt @ Measured Temperature		0.76 ohm-m @ 86.00° F	
Rmc @ Measured Temperature		1.14 ohm-m @ 86.00° F	
Source Rmt		CALC	
Rmc		CALC	
Rm @ BHT		0.49 ohm-m @ 172.00° F	
Time Since Circulation		8 HOURS	
Maximum Recorded Temperature		172.00° F @	
Equipment No.		Location 13045 GJ/CO	
Recorded By		S.LACKEY	
Witnessed By		D.MOORE	

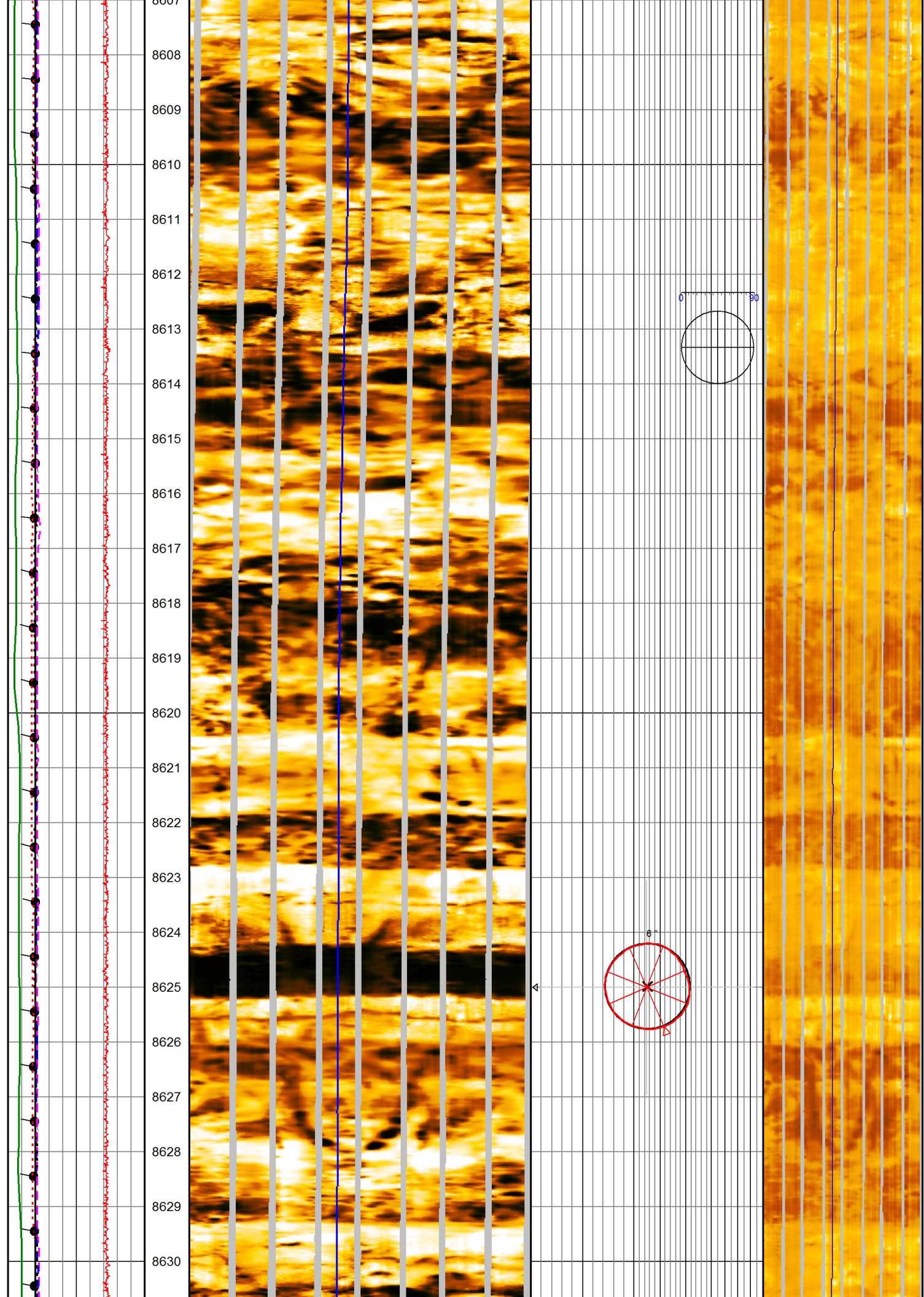
All interpretation of log data are opinions based on inferences from electrical or other measurements. We do not guarantee the accuracy or correctness of any interpretation or recommendation and we shall not be liable or responsible for any loss, cost, damages or expenses incurred or sustained by anyone resulting from any interpretation or recommendation made by any of our employees or agents.			
Rig:	NABORS M13	Remarks:	Service Order # 3529587
Drilling Stopped		CMI PASS DEPTH CORRECTED TO OPEN HOLE GAMMA RAY.	
Circulation Stopped	8 HOURS	TIGHT PULLS, BOREHOLE SIZE AND RUGOSITY WILL AFFECT DATA QUALITY.	
Tool on Bottom			
BHT	172.00° F		
Equipment Data			
Tool Type		Tool Type	Other
MIE-A.A 102 MIM-A.A 207			PROCESSED BY J. TURNER
CORRELATION PARAMETERS			

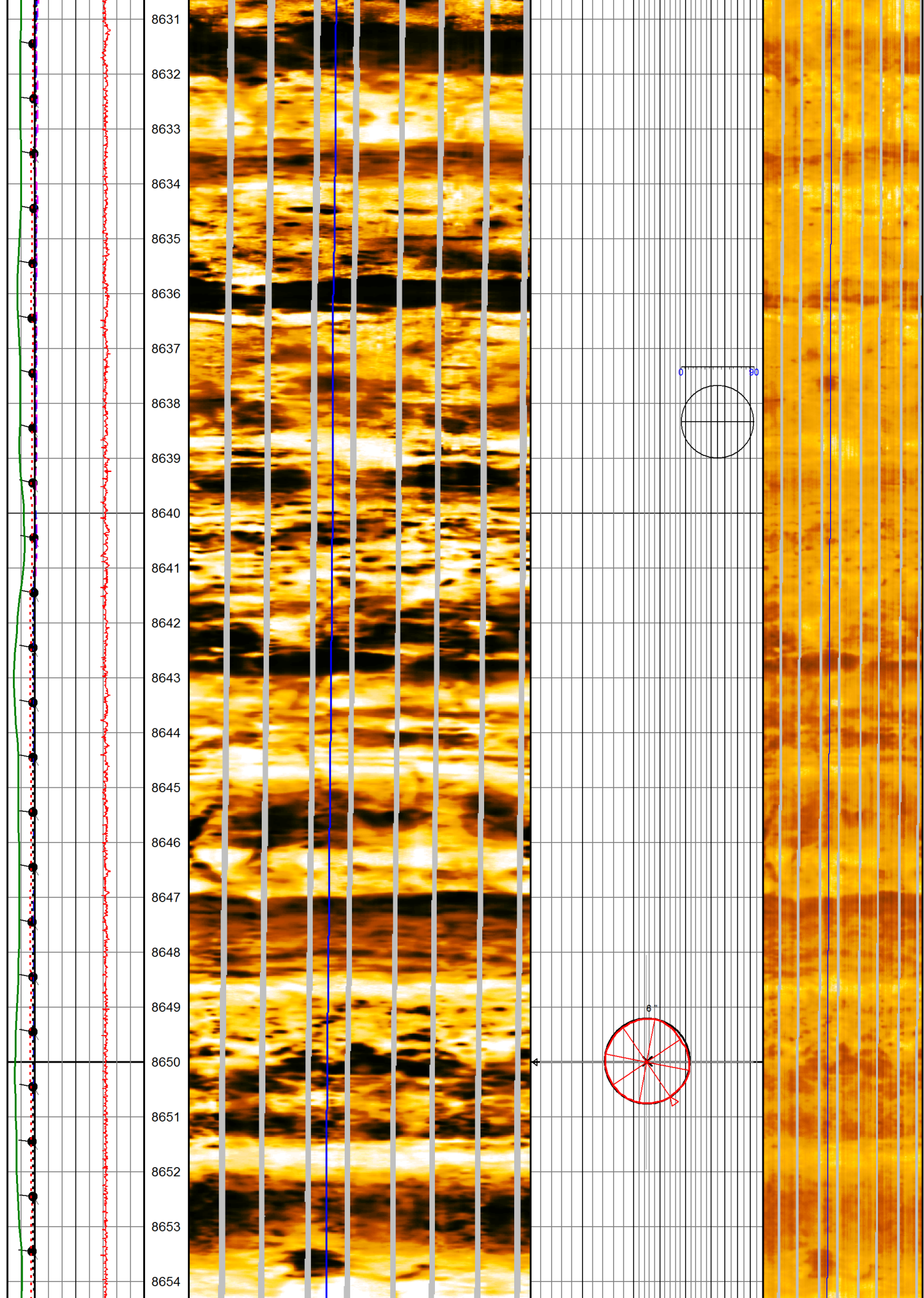


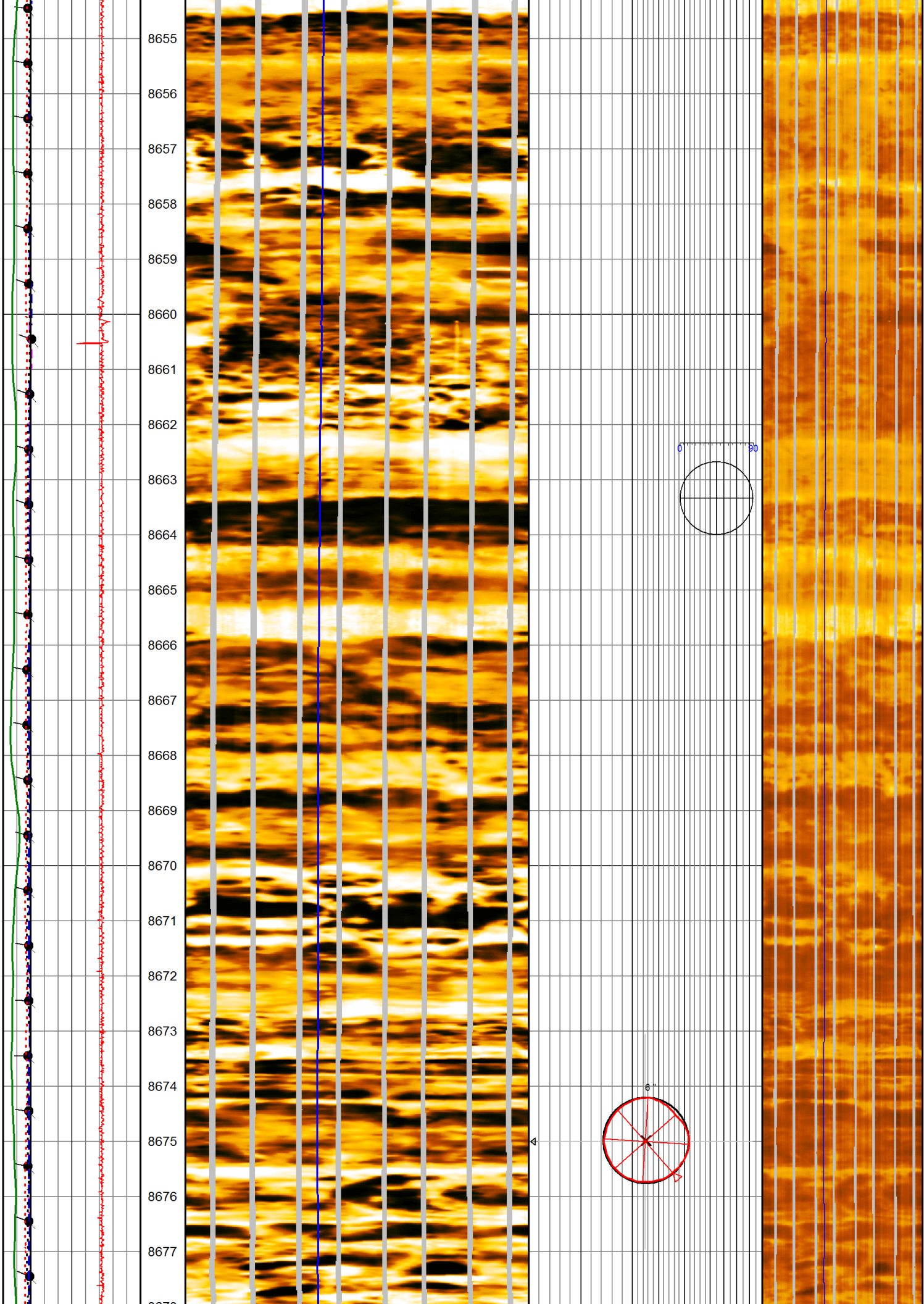


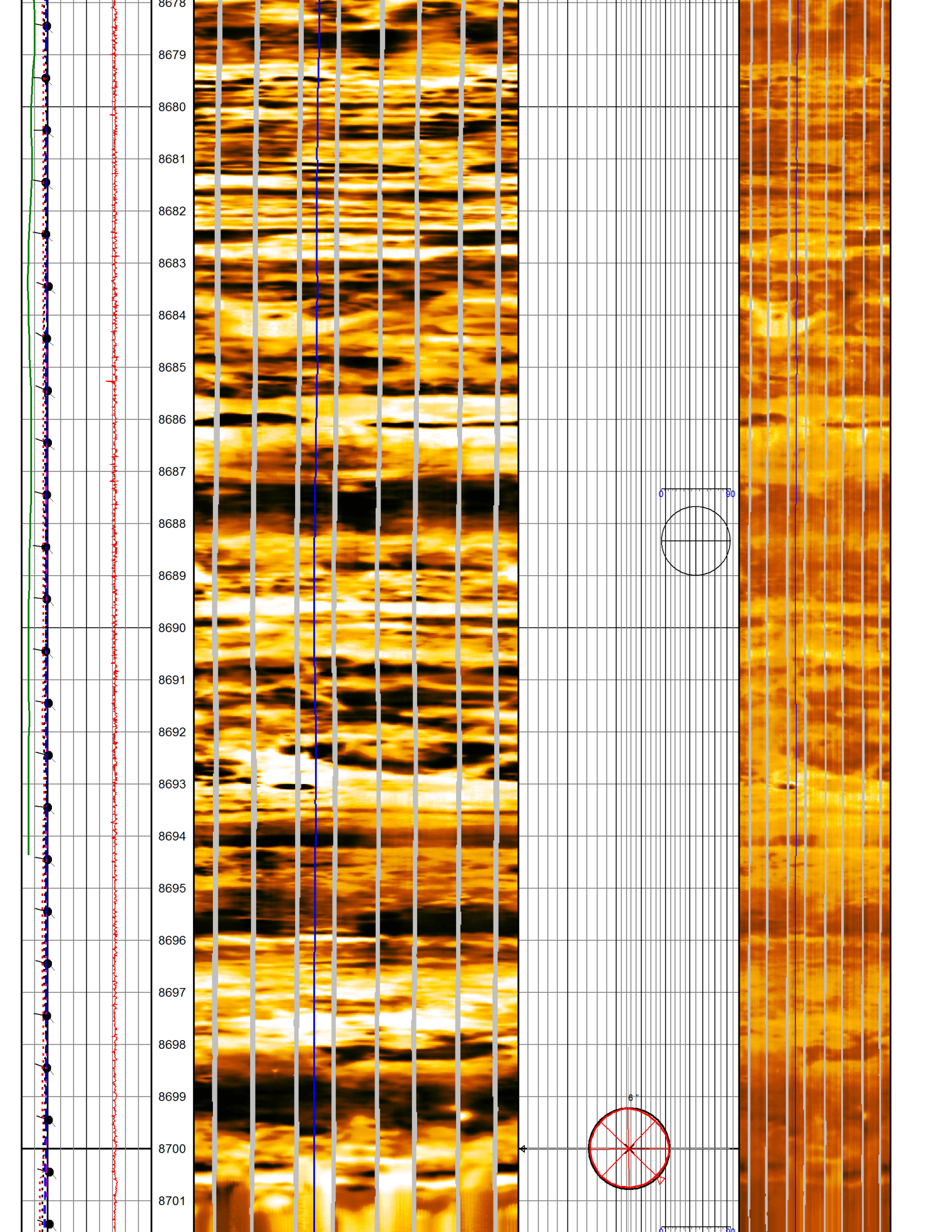


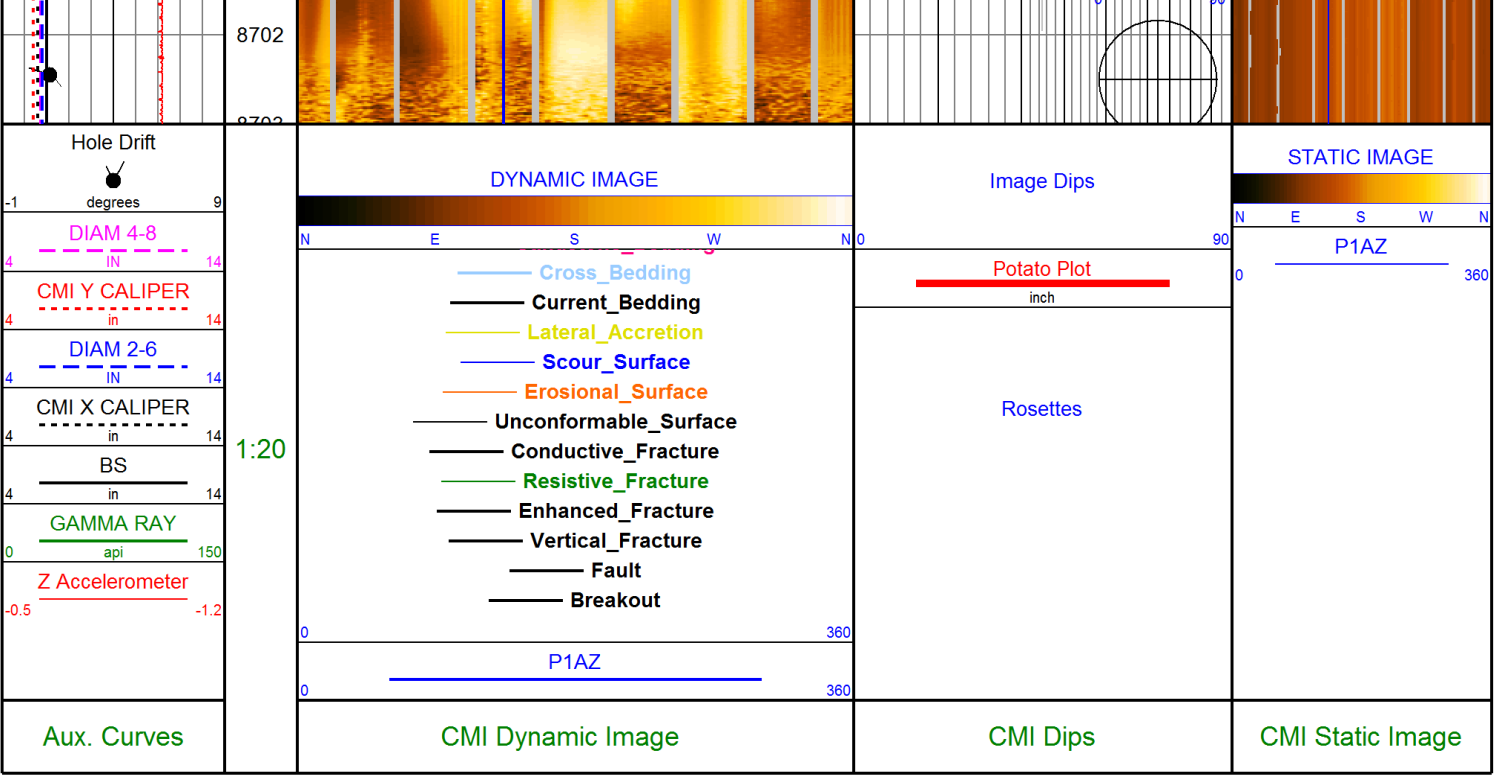













COMPANY:	KINDER MORGAN C02 Co. L.P
WELL:	DOE CANYON #15
FIELD:	DOE CANYON
COUNTY:	DOLORES
STATE:	COLORADO



Weatherford®

Compact Micro-Imager
Image Only