
KINDER MORGAN INC - EBUS

Doe Canyon 15

Dolores County , Colorado

Plug Back

25-Aug-2013

Job Site Documents

The Road to Excellence Starts with Safety

| | | | |
|------------------------------------|------------------------------------|------------------------|--------------------------|
| Sold To #: 320986 | Ship To #: 3011447 | Quote #: | Sales Order #: 900692524 |
| Customer: KINDER MORGAN INC - EBUS | Customer Rep: Moore, Dave | | |
| Well Name: Doe Canyon | Well #: 15 | API/UWI #: | |
| Field: | City (SAP): DOVE CREEK | County/Parish: Dolores | State: Colorado |
| Contractor: | Rig/Platform Name/Num: Nabors M-13 | | |
| Job Purpose: Plug Back | | | |
| Well Type: Producing Well | Job Type: Plug Back | | |
| Sales Person: KIDDOO, JUSTIN | Srvc Supervisor: JAMISON, PRICE | MBU ID Emp #: | 229155 |

Job Personnel

| HES Emp Name | Exp Hrs | Emp # | HES Emp Name | Exp Hrs | Emp # | HES Emp Name | Exp Hrs | Emp # |
|------------------------|---------|--------|---------------|---------|--------|------------------|---------|--------|
| BRANDT, NICHOLAS Wayne | 4.0 | 487947 | ETCITY, JERRY | 4.0 | 227876 | JAMISON, PRICE W | 4.0 | 229155 |

Equipment

| HES Unit # | Distance-1 way | HES Unit # | Distance-1 way | HES Unit # | Distance-1 way | HES Unit # | Distance-1 way |
|------------|----------------|------------|----------------|------------|----------------|------------|----------------|
| 10025039 | 100 mile | 10724579 | 100 mile | 11223557 | 100 mile | 11259886 | 100 mile |

Job Hours

| Date | On Location Hours | Operating Hours | Date | On Location Hours | Operating Hours | Date | On Location Hours | Operating Hours |
|---------|-------------------|-----------------|------|-------------------|-----------------|------|-------------------|-----------------|
| 8/25/13 | 4 | 1 | | | | | | |

TOTAL Total is the sum of each column separately

Job

| Formation Name | Top | Bottom | Called Out | Date | Time | Time Zone |
|------------------------|----------|-------------------|---------------|-----------------|-------|-----------|
| Formation Depth (MD) | | | On Location | 25 - Aug - 2013 | 13:00 | MST |
| Form Type | BHST | | Job Started | 25 - Aug - 2013 | 18:00 | MST |
| Job depth MD | 8710. ft | Job Depth TVD | Job Completed | 25 - Aug - 2013 | 19:42 | MST |
| Water Depth | | Wk Ht Above Floor | Departed Loc | 25 - Aug - 2013 | 20:31 | MST |
| Perforation Depth (MD) | From | To | | 25 - Aug - 2013 | 22:00 | MST |

Well Data

| Description | New / Used | Max pressure psig | Size in | ID in | Weight lbm/ft | Thread | Grade | Top MD ft | Bottom MD ft | Top TVD ft | Bottom TVD ft |
|----------------------|------------|-------------------|---------|-------|---------------|--------|-------|-----------|--------------|------------|---------------|
| 6" Pilot Hole | | | | 6. | | | | 8488. | 8863. | | |
| 7" Production Casing | Used | | 7. | 6.184 | 29. | | | 8344. | 8540. | | |
| 3 1/2" Drill Pipe | Unknown | | 3.5 | 2.602 | 16.69 | | | . | 8463. | | |
| 2 7/8" Tubing | Unknown | | 2.875 | 2.441 | 6.5 | | | 8463. | 8863. | | |

Tools and Accessories

| Type | Size | Qty | Make | Depth | Type | Size | Qty | Make | Depth | Type | Size | Qty | Make |
|--------------|------|-----|------|-------|-------------|------|-----|------|-------|----------------|------|-----|------|
| Guide Shoe | | | | | Packer | | | | | Top Plug | | | |
| Float Shoe | | | | | Bridge Plug | | | | | Bottom Plug | | | |
| Float Collar | | | | | Retainer | | | | | SSR plug set | | | |
| Insert Float | | | | | | | | | | Plug Container | | | |
| Stage Tool | | | | | | | | | | Centralizers | | | |

Miscellaneous Materials

| Gelling Agt | Conc | Surfactant | Conc | Acid Type | Qty | Conc | % |
|---------------|------|------------|------|-----------|------|------|---|
| Treatment Fld | Conc | Inhibitor | Conc | Sand Type | Size | Qty | |

Fluid Data

| Stage/Plug #: 1 | Fluid Name | Qty | Qty uom | Mixing Density lbm/gal | Yield ft ³ /sk | Mix Fluid Gal/sk | Rate bbl/min | Total Mix Fluid Gal/sk |
|-----------------|------------|-----|---------|------------------------|---------------------------|------------------|--------------|------------------------|
| Fluid # | Stage Type | | | | | | | |

Stage/Plug #: 1

| Stage/Plug #: 1 | | | | | | | | | |
|--|--------------------|---|-----------------|-----------------------------------|------------------------|---------------------------|------------------|-----------------|------------------------|
| Fluid # | Stage Type | Fluid Name | Qty | Qty uom | Mixing Density lbm/gal | Yield ft ³ /sk | Mix Fluid Gal/sk | Rate bbl/min | Total Mix Fluid Gal/sk |
| 1 | Fresh Water Spacer | | 10.00 | bbl | 8.33 | .0 | .0 | .0 | |
| 2 | Plug Cement | CMT - PREMIUM - CLASS G, 94 LB SK (100003685) | 100 | sacks | 17. | .99 | 3.75 | | 3.75 |
| | 94 lbm | CMT - PREMIUM - CLASS G REG OR TYPE V, BULK (100003685) | | | | | | | |
| | 0.4 % | HR-5, 50 LB SK (100005050) | | | | | | | |
| | 0.2 % | CFR-3, W/O DEFOAMER, 50 LB SK (100003653) | | | | | | | |
| | 0.125 lbm | POLY-E-FLAKE (101216940) | | | | | | | |
| | 3.746 Gal | FRESH WATER | | | | | | | |
| 3 | Displacement | | 60.8 | bbl | 8.33 | .0 | .0 | .0 | |
| Calculated Values | | Pressures | | Volumes | | | | | |
| Displacement | 60.8 | Shut In: Instant | | Lost Returns | NO | Cement Slurry | 17.8 | Pad | |
| Top Of Cement | 8350 ??? | 5 Min | | Cement Returns | NO | Actual Displacement | 60.8 | Treatment | |
| Frac Gradient | | 15 Min | | Spacers | 10 | Load and Breakdown | | Total Job | 88 |
| Rates | | | | | | | | | |
| Circulating | RIG | Mixing | 2 | Displacement | 2 | Avg. Job | 2 | | |
| Cement Left In Pipe | Amount | ft | Reason | Shoe Joint | | | | | |
| Frac Ring # 1 @ | ID | | Frac ring # 2 @ | ID | | Frac Ring # 3 @ | ID | Frac Ring # 4 @ | ID |
| The Information Stated Herein Is Correct | | | | Customer Representative Signature | | | | | |

The Road to Excellence Starts with Safety

| | | | |
|---|-------------------------------|---|---------------------------------|
| Sold To #: 320986 | Ship To #: 3011447 | Quote #: | Sales Order #: 900692524 |
| Customer: KINDER MORGAN INC - EBUS | | Customer Rep: Moore, Dave | |
| Well Name: Doe Canyon | | Well #: 15 | API/UWI #: |
| Field: | City (SAP): DOVE CREEK | County/Parish: Dolores | State: Colorado |
| Legal Description: | | | |
| Lat: | | Long: | |
| Contractor: | | Rig/Platform Name/Num: Nabors M-13 | |
| Job Purpose: Plug Back | | | Ticket Amount: |
| Well Type: Producing Well | | Job Type: Plug Back | |
| Sales Person: KIDDOO, JUSTIN | | Srvc Supervisor: JAMISON, PRICE | MBU ID Emp #: 229155 |

| Activity Description | Date/Time | Cht # | Rate bbl/ min | Volume bbl | | Pressure psig | | Comments |
|--|---------------------|----------|---------------------|---------------|-------|------------------|------------|--|
| | | | | Stage | Total | Tubing | Casing | |
| Call Out | 08/25/2013 13:00 | | | | | | | DRILL PIPE 8320.34 TAIL PIPE 2.375 382.51 FT 7 IN SET @ 8534 6 IN OPEN HOLE 8534 TO 8710 |
| Depart Yard Safety Meeting | 08/25/2013 15:30 | | | | | | | |
| Crew Leave Yard | 08/25/2013 15:45 | | | | | | | |
| Arrive At Loc | 08/25/2013 18:00 | | | | | | | |
| Assessment Of Location Safety Meeting | 08/25/2013 18:20 | | | | | | | |
| Pre-Rig Up Safety Meeting | 08/25/2013 18:30 | | | | | | | |
| Pre-Job Safety Meeting | 08/25/2013 19:00 | | | | | | | |
| Start Job | 08/25/2013 19:42 | | | | | | | |
| Prime Pumps | 08/25/2013 19:43 | | 2 | 3 | | | 160.0 | FRESH WATER |
| Test Lines | 08/25/2013 19:46 | | | | | | 3000. 0 | |
| Pump Spacer | 08/25/2013 19:48 | | 2 | 10 | | | 160.0 | |
| Pump Cement | 08/25/2013 19:53 | | 2 | 17.6 | | | 160.0 | MIXED @ 17 PPG YIELD .99 WAT/REQ 3.75 100 SKS |
| Pump Displacement | 08/25/2013 20:04 | | 2 | 60.8 | | | 250.0 | HAD TO SHUT DOWN TO GET CEMENT BACK UP TO WEIGHT |
| Shutdown | 08/25/2013 20:29 | | | | | | | RELEASED PRESSURE GOT .5 BBLs BACK TO PUMP |
| Activity Description | Date/Time | Cht | Rate bbl/ min | Volume bbl | | Pressure psig | | Comments |

Sold To # : 320986

Ship To # :3011447

Quote # :

Sales Order # : 900692524

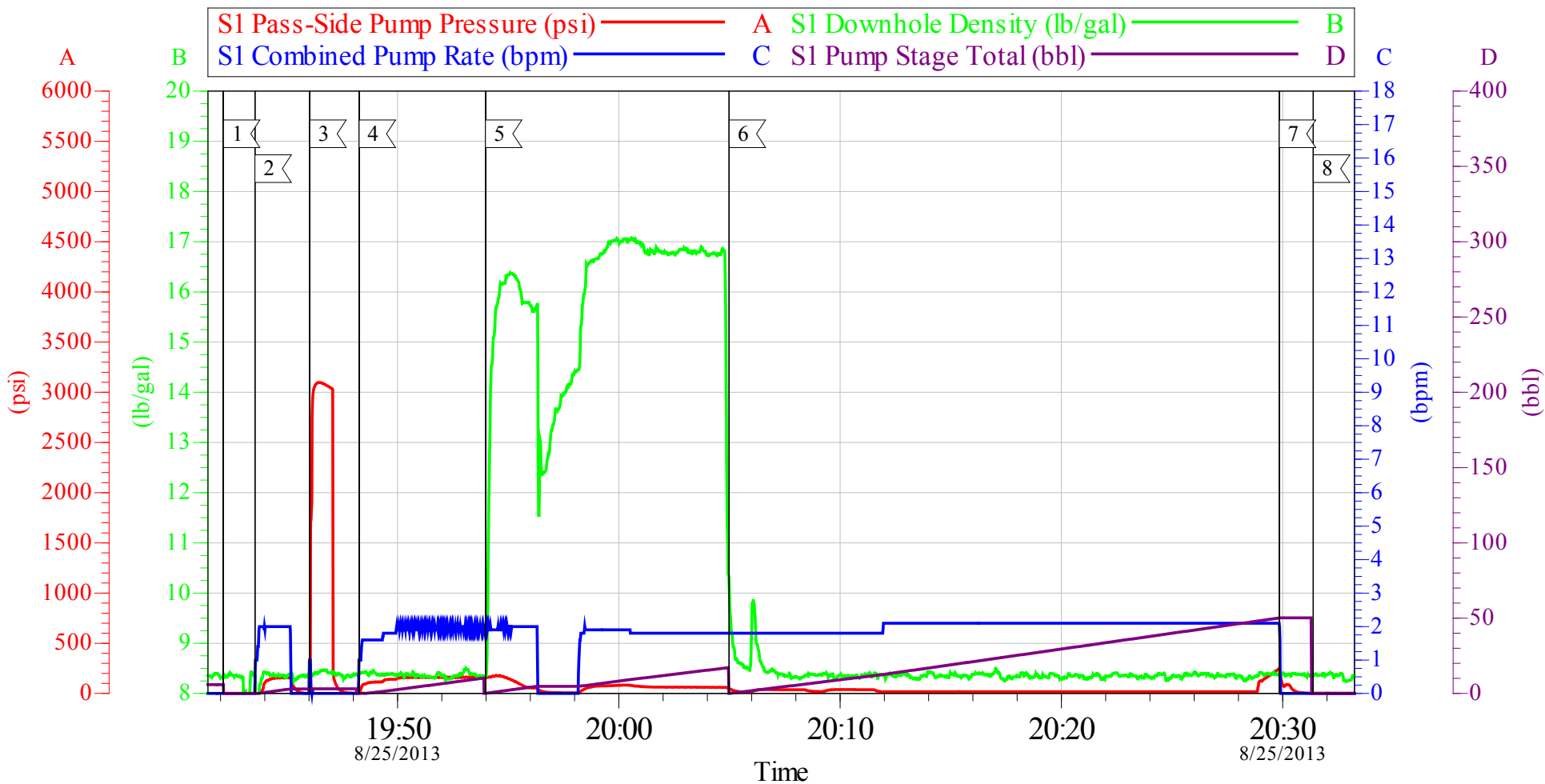
SUMMIT Version: 7.3.0106

Wednesday, August 28, 2013 08:43:00

| | | # | | Stage | Total | Tubing | Casing | |
|---|---------------------|---|--|-------|-------|--------|--------|--|
| End Job | 08/25/2013 20:31 | | | | | | | RIG PULLED 12 STANDS BEFORE CIRCULATING ALL STANDS PULLED DRY |
| Post-Job Safety Meeting (Pre Rig-Down) | 08/25/2013 20:58 | | | | | | | GOOD CIRCULATION THROUGH OUT JOB |
| Depart Location Safety Meeting | 08/25/2013 20:58 | | | | | | | DRILL PIPE WAS NOT MOVED THROUGHOUT JOB |
| Crew Leave Location | 08/25/2013 22:00 | | | | | | | THANKS FOR USING HALLIBURTON BILL JAMISON & CREW |

KINDER MORGAN

DOE CANYON # 15 PLUG



| Local Event Log | | | | | |
|-----------------|---------------------------|----------|---|--------------------------|----------|
| 1 | START JOB | 19:42:08 | 2 | PRIME LINES | 19:43:33 |
| 3 | TEST LINES | 19:46:02 | 4 | START FRESH WATER SPACER | 19:48:16 |
| 5 | START CEMENT | 19:53:58 | 6 | START DISPLACEMENT | 20:04:59 |
| 7 | SHUT DOWN/RELEASE PRESSUE | 20:29:51 | 8 | END JOB | 20:31:23 |

Customer: KINDER MORGAN
 Well Description: DOE CANYON # 15
 Supervisor: BILL JAMISON

Job Date: 25-Aug-2013
 Job Type: CEMENT
 Operator: JERRY ETCITY

Sales Order #: 900692524
 CO.REP: DAVE MOORE
 RED TIGER: 11223557

OptiCem v6.4.10
 25-Aug-13 20:47