
KINDER MORGAN INC - EBUS

Doe Canyon 15

Dolores County , Colorado

Cement Intermediate Casing

20-Aug-2013

Job Site Documents

The Road to Excellence Starts with Safety

Sold To #: 320986	Ship To #: 3011447	Quote #:	Sales Order #: 900656713
Customer: KINDER MORGAN INC - EBUS		Customer Rep: Knorigy, Kenny	
Well Name: Doe Canyon	Well #: 15	API/UWI #:	
Field:	City (SAP): DOVE CREEK	County/Parish: Dolores	State: Colorado
Contractor: NABORS	Rig/Platform Name/Num: Nabors M13		
Job Purpose: Cement Intermediate Casing			
Well Type: Producing Well	Job Type: Cement Intermediate Casing		
Sales Person: FLING, MATTHEW	Srvc Supervisor: WOOD, BRANDON	MBU ID Emp #:	412753

Job Personnel

HES Emp Name	Exp Hrs	Emp #	HES Emp Name	Exp Hrs	Emp #	HES Emp Name	Exp Hrs	Emp #
AYERS, JACOB Cedric	11	487729	BRANDT, NICHOLAS Wayne	11	487947	CHEE, NEWMAN Lamar	11	515460
ETCITY, JERRY	11	227876	FORSHEY, MEGAN	11	525690	JAMISON, PRICE W	11	229155
TALLMAN, JESS L	11	122519	VALDEZ, EUTIMIA Amor	11	514129	WOOD, BRANDON M	11	412753

Equipment

HES Unit #	Distance-1 way	HES Unit #	Distance-1 way	HES Unit #	Distance-1 way	HES Unit #	Distance-1 way
10001398C	117 mile	10025040	117 mile	10025061	117 mile	10713294	117 mile
10822043	117 mile	11223557	117 mile	11259886	117 mile	11324578	117 mile
11338219	117 mile	11583925	117 mile	54283	117 mile		

Job Hours

Date	On Location Hours	Operating Hours	Date	On Location Hours	Operating Hours	Date	On Location Hours	Operating Hours

TOTAL Total is the sum of each column separately

Job

Formation Name	Job	Job Times
Formation Depth (MD)	Top Bottom	Date Time Time Zone
Form Type	BHST	20 - Aug - 2013 02:00 MST
Job depth MD	8488. ft	20 - Aug - 2013 15:00 MST
Water Depth	Wk Ht Above Floor 3. ft	20 - Aug - 2013 00:00 MST
Perforation Depth (MD)	From To	20 - Aug - 2013 00:00 MST

Well Data

Description	New / Used	Max pressure psig	Size in	ID in	Weight lbm/ft	Thread	Grade	Top MD ft	Bottom MD ft	Top TVD ft	Bottom TVD ft
8 3/4" Open Hole				8.75				2519.	8488.		
7" Production Casing	Used		7.	6.184	29.			.	5869.		
7" Production Casing	Used		7.	6.184	29.			8344.	8488.		
7" Production Casing	Used		7.	6.094	32.			5869.	8344.		
9 5/8" Surface	Used		9.625	8.921	36.		J-55	.	2519.		

Sales/Rental/3rd Party (HES)

Description	Qty	Qty uom	Depth	Supplier
CENTRALIZER-7"-CSG-8-1/2"-HINGED	65	EA		
CLAMP - LIMIT - 7 - HINGED -	1	EA		
KIT,HALL WELD-A	3	EA		
PLUG,CMTG,TOP,7,HWE,5.66 MIN/6.54 MAX CS	1	EA		
SUGAR, GRANULATED, IMPERIAL	300	LB		

Tools and Accessories

Type	Size	Qty	Make	Depth	Type	Size	Qty	Make	Depth	Type	Size	Qty	Make
Guide Shoe					Packer					Top Plug			

Float Shoe					Bridge Plug					Bottom Plug								
Float Collar					Retainer					SSR plug set								
Insert Float										Plug Container								
Stage Tool										Centralizers								
Miscellaneous Materials																		
Gelling Agt		Conc		Surfactant		Conc		Acid Type		Qty		Conc	%					
Treatment Fld		Conc		Inhibitor		Conc		Sand Type		Size		Qty						
Fluid Data																		
Stage/Plug #: 1																		
Fluid #	Stage Type	Fluid Name			Qty	Qty uom	Mixing Density lbm/gal	Yield ft3/sk	Mix Fluid Gal/sk	Rate bbl/min	Total Mix Fluid Gal/sk							
1	Water Spacer				10.00	bbl	8.33	.0	.0	.0								
2	CHEMICAL WASH	CHEMICAL WASH - SBM (21914)			20.00	bbl	8.4	.0	.0	.0								
3	Water Spacer				10.00	bbl	8.33	.0	.0	.0								
4	Foamed Lead	ELASTISEAL (TM) SYSTEM (450262)			2000.0	sacks	13.	1.43	6.76		6.76							
	0.2 %	VERSASET, 55 LB SK (101376573)																
	0.2 %	HALAD-766, 55 LB SACK (101477695)																
	1.5 %	CHEM - FOAMER 760, TOTETANK (101664089)																
	6.764 Gal	FRESH WATER																
5	Tail Cement	HALCEM (TM) SYSTEM (452986)			300.0	sacks	13.5	1.28	5.67		5.67							
	0.2 %	VERSASET, 55 LB SK (101376573)																
	0.2 %	HALAD-766, 55 LB SACK (101477695)																
	5.667 Gal	FRESH WATER																
6	Displacement				312.4	bbl	8.33	.0	.0	.0								
7	CAP CEMENT	PLUGCEM (TM) SYSTEM (452969)			100.0	sacks	15.8	1.17	5.02		5.02							
	2 %	CALCIUM CHLORIDE - HI TEST PELLET (100005053)																
	5.019 Gal	FRESH WATER																
Calculated Values		Pressures			Volumes													
Displacement		Shut In: Instant			Lost Returns		Cement Slurry			Pad								
Top Of Cement		5 Min			Cement Returns		Actual Displacement			Treatment								
Frac Gradient		15 Min			Spacers		Load and Breakdown			Total Job								
Rates																		
Circulating		Mixing			Displacement		Avg. Job											
Cement Left In Pipe		Amount	40 ft	Reason	Shoe Joint													
Frac Ring # 1 @		ID		Frac ring # 2 @		ID		Frac Ring # 3 @		ID		Frac Ring # 4 @		ID				
The Information Stated Herein Is Correct					Customer Representative Signature													

The Road to Excellence Starts with Safety

Sold To #: 320986	Ship To #: 3011447	Quote #:	Sales Order #: 900656713
Customer: KINDER MORGAN INC - EBUS		Customer Rep: Knorigy, Kenny	
Well Name: Doe Canyon	Well #: 15	API/UWI #:	
Field:	City (SAP): DOVE CREEK	County/Parish: Dolores	State: Colorado
Legal Description:			
Lat:		Long:	
Contractor: NABORS		Rig/Platform Name/Num: Nabors M13	
Job Purpose: Cement Intermediate Casing			Ticket Amount:
Well Type: Producing Well		Job Type: Cement Intermediate Casing	
Sales Person: FLING, MATTHEW		Srv Supervisor: WOOD, BRANDON	MBU ID Emp #: 412753

Activity Description	Date/Time	Cht #	Rate bbl/min	Volume bbl		Pressure psig		Comments
				Stage	Total	Tubing	Casing	
Call Out	08/20/2013 02:00							
Depart Yard Safety Meeting	08/20/2013 12:25							SAFETY MEETING INVOLVING THE CMT CREW
Crew Leave Yard	08/20/2013 12:30							
Arrive At Loc	08/20/2013 15:00							1- F-450 11583925, 2- RED TIGER PUMP TRUCKS, 2 - 660 BULK TRUCK TRAILERS, 2 FSB'S
Assessment Of Location Safety Meeting	08/20/2013 15:05							ASSESSMENT OF LOCATION INVOLVING THE CMT CREW
Pre-Rig Up Safety Meeting	08/20/2013 15:10							SAFETY MEETING INVOLVING THE ENTIRE CMT/ RIG CREW
Rig-Up Equipment	08/20/2013 16:00							
Pre-Job Safety Meeting	08/20/2013 19:30							SAFETY MEETING INVOLVING EVERYONE ON LOCATION
Start Job	08/20/2013 20:06							TP 8540.99 FT, FC 8498.45 FT, SJ 42.54 FT, 7 " 29 & 32 # CSGS, 8 3/4 OH, 9 5/8 36 # SURFACESET @ 2519 FT
Test Lines	08/20/2013 20:11		0.5		0.4		5160.0	PRESSURE TEST GOOD TO 5160 PSI, CEMENT SIDE
Pump Spacer 1	08/20/2013 20:29		2		10		120.0	PUMP 10 BBLS H2O SPACER

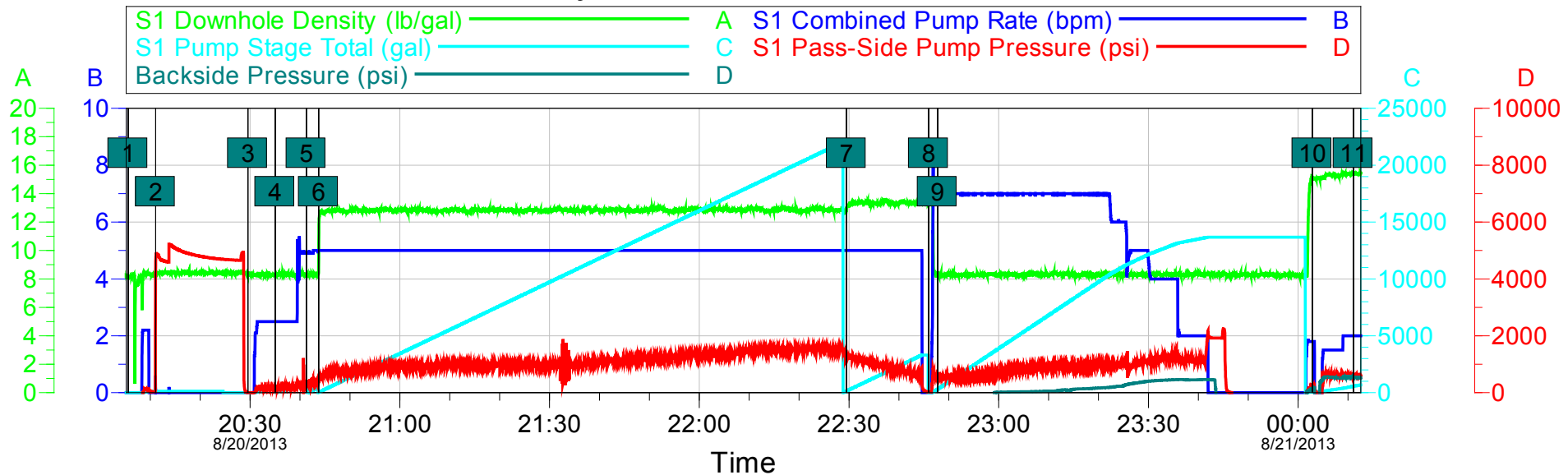
Activity Description	Date/Time	Cht #	Rate bbl/min	Volume bbl		Pressure psig		Comments
				Stage	Total	Tubing	Casing	
Pump Spacer 2	08/20/2013 20:35		2.5		20		160.0	PUMP 20 BBLS CHEMWASH SPACER
Pump Spacer 1	08/20/2013 20:39		4		10		434.0	PUMP 10 BBLS H2O SPACER
Pump Lead Cement	08/20/2013 20:45		5		520.1		754.0	2000 SKS, 1.46 YLD, 6.93 GAL H2O/SK, 520.1 BBLS @ 12.4 #, 184.4 BBLS H2O REQ, 238000 SCF NITROGEN USED TO FOAM CEMENT
Pump Tail Cement	08/20/2013 22:30		5		70		90.0	300 SKS, 1.18 YLD, 5.2 GAL H2O/SK, 63 BBLS @ 15.6 #, 37.1 BBLS H2O REQ
Shutdown	08/20/2013 22:44							SHUT DOWN TO DROP TOP PLUG
Drop Top Plug	08/20/2013 22:45							TATTLE TAIL INDICATED PLUG LEFT THE PLUG CONTAINER
Pump Displacement	08/20/2013 22:48		7		312.4		570.0	CALCULATED 312.4 BBLS DISPLACEMENT, ACTUALLY PUMPED 315.4 BBLS ON TANKS MARK TO MARK TO BUMP PLUG
Cement Returns to Surface	08/20/2013 23:12				115			CALCULATED SHOULD CIRCULATE 343 BBLS UNFOAMED CEMENT RETURNS TO SURFACE, ACTUALLY CIRCULATED 115 BBLS FOAMED CEMENT TO SURFACE
Slow Rate	08/20/2013 23:36		2				1436.0	SLOW RATE 2 BPM TO LAND THE PLUG
Bump Plug	08/20/2013 23:42		2				1010.0	CALCULATED 1010 PSI DIFFERENTIAL WHEN PLUG LANDS, PLUG BUMPED @ 1500 PSI
Check Floats	08/20/2013 23:45				3		2000.0	PRESSURED UP TO 2000 PSI, RELEASED PRESSURE FLOATS HELD, FLOWED BACK 3 BBLS
Activity Description	Date/Time	Cht #	Rate bbl/min	Volume bbl		Pressure psig		Comments
				Stage	Total	Tubing	Casing	

Cementing Job Log

Pump Cap Cement	08/21/2013 00:03		2		20.8		560.0	100 SKS, 1.17 YLD, 5.02 GAL/SK, 20.8 BBLs @ 15.8 #, 12 BBLs MIX WATER REQ.
Pump Water	08/21/2013 00:20		2		10		560.0	PUMP 10 BBLs FRESH WATER BEHIND CAP CEMENT.
End Job	08/21/2013 00:30							GOOD CIRCULATION THROUGHOUT THE ENTIRE CMT JOB, NO PIPE MOVEMENT,
Pre-Rig Down Safety Meeting	08/21/2013 00:35							SAFETY MEETING INVOLVING THE CMT/RIG CREW
Rig-Down Equipment	08/21/2013 00:40							
Safety Meeting - Departing Location	08/21/2013 01:55							SAFETY MEETING INVOLVING THE CMT CREW
Depart Location for Service Center or Other Site	08/21/2013 02:00							THANK YOU FOR USING HALLIBURTON, BRANDON WOOD AND CREW

Kinder Morgan

Doe Canyon 15 Foam Intermediate



Local Event Log

Intersection			SPPP
1	Start Job	8/20/2013 20:05:34	-2.000
2	Pressure Test	8/20/2013 20:11:04	4461
3	Pump Fresh Water Spacer	8/20/2013 20:29:32	3.000
4	Pump ChemWash	8/20/2013 20:35:01	171.7
5	Pump Fresh Water Spacer	8/20/2013 20:41:15	332.7
6	Pump Foamed Lead	8/20/2013 20:43:44	395.6
7	Pump Tail Cement	8/20/2013 22:29:31	1306
8	Drop Plug	8/20/2013 22:45:59	31.00
9	Pump Displacement	8/20/2013 22:47:44	587.7
10	Pump Cap Cement	8/21/2013 00:02:49	235.0
11	End Job	8/21/2013 00:11:04	601.0

Customer: Kinder Morgan
Well Description: Doe Canyon 15
Customer Rep: Dave Moore

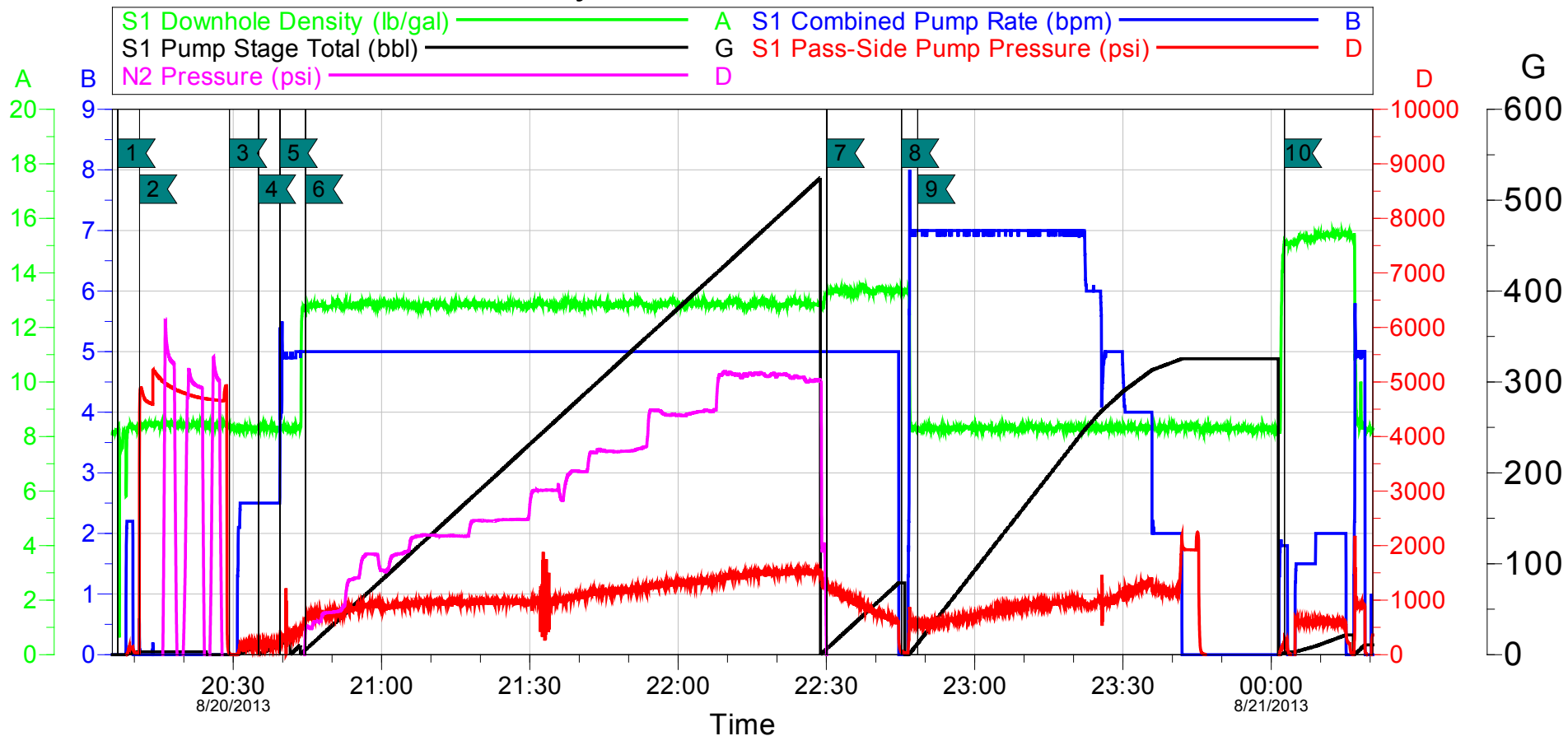
Job Date: 20-Aug-2013
Job Type: Foam Intermediate
Service Supervisor: Brandon Wood

Sales Order #: 900656713
ADC used: Yes
Pump Operator: Lydell Begay

OptiCem v6.4.21
21-Aug-13 00:42

Kinder Morgan

Doe Canyon 15 Foam Intermediate



Local Event Log

Intersection			SPPP	Intersection			SPPP
1	Start Job	8/20/2013 20:06:41	-2.000	2	Pressure Test	8/20/2013 20:11:03	4209
3	Start Fresh Water Spacer	8/20/2013 20:29:14	17.11	4	Start ChemWash	8/20/2013 20:35:06	169.4
5	Start Fresh Water Spacer	8/20/2013 20:39:28	253.0	6	Start Foamed Lead Cement	8/20/2013 20:44:37	552.1
7	Start Tail Cement	8/20/2013 22:30:06	1216	8	Drop Plug	8/20/2013 22:45:12	55.81
9	Pump Displacement	8/20/2013 22:48:30	551.9	10	Pump Cap Cement	8/21/2013 00:02:39	226.9

Customer: Kinder Morgan
Well Description: Doe Canyon 15
Customer Rep: Dave Moore

Job Date: 20-Aug-2013
Job Type: Foam Intermed
Service Supervisor: Brandon Wood

Sales Order #: 900656713
ADC used: yes
Pump Operator: Lydell Begay

OptiCem v6.4.21
21-Aug-13 00:36