
KINDER MORGAN INC - EBUS

Doe Canyon 15

Dolores County , Colorado

Cement Surface Casing

29-Jul-2013

Job Site Documents

The Road to Excellence Starts with Safety

Sold To #: 320986	Ship To #: 3011447	Quote #:	Sales Order #: 900614877
Customer: KINDER MORGAN INC - EBUS	Customer Rep:		
Well Name: Doe Canyon	Well #: 15	API/UWI #:	
Field:	City (SAP): DOVE CREEK	County/Parish: Dolores	State: Colorado
Contractor: Nabors	Rig/Platform Name/Num: Nabors M 13		
Job Purpose: Cement Surface Casing			
Well Type: Producing Well	Job Type: Cement Surface Casing		
Sales Person: KIDDOO, JUSTIN	Srv Supervisor: WOOD, BRANDON	MBU ID Emp #:	412753

Job Personnel

HES Emp Name	Exp Hrs	Emp #	HES Emp Name	Exp Hrs	Emp #	HES Emp Name	Exp Hrs	Emp #
AXT, STEPHEN Gary	16	434802	ETCITY, JERRY	16	227876	HUGHTE, LANDON Jacob	16	549879
RAFF, JOHN	16	473512	WOOD, BRANDON M	16	412753			

Equipment

HES Unit #	Distance-1 way	HES Unit #	Distance-1 way	HES Unit #	Distance-1 way	HES Unit #	Distance-1 way
10025031	117 mile	10025039	117 mile	10025041	117 mile	10713294	117 mile
10724579	117 mile	10741115	117 mile	10804563	117 mile	11223557	117 mile
11381461	117 mile						

Job Hours

Date	On Location Hours	Operating Hours	Date	On Location Hours	Operating Hours	Date	On Location Hours	Operating Hours

TOTAL Total is the sum of each column separately

Job				Job Times			
Formation Name				Date	Time	Time Zone	
Formation Depth (MD)	Top	Bottom		Called Out	28 - Jul - 2013	05:00	MST
Form Type		BHST		On Location	28 - Jul - 2013	10:30	MST
Job depth MD	2545. ft	Job Depth TVD	2499.8 ft	Job Started	28 - Jul - 2013	14:30	MST
Water Depth		Wk Ht Above Floor	2.5 ft	Job Completed	29 - Jul - 2013	00:00	MST
Perforation Depth (MD)	From	To		Departed Loc	29 - Jul - 2013	00:00	MST

Well Data

Description	New / Used	Max pressure psig	Size in	ID in	Weight lbm/ft	Thread	Grade	Top MD ft	Bottom MD ft	Top TVD ft	Bottom TVD ft
12 1/4" Open Hole				12.25				.	2519.		
9 5/8" Surface	Used		9.625	8.921	36.		J-55	.	2519.		

Sales/Rental/3rd Party (HES)

Description	Qty	Qty uom	Depth	Supplier
CLR,FLT,TROPHY SEAL, 9-5/8 8RD	1	EA		
SHOE,FLT,TROPHY SEAL,9 5/8 8RD	1	EA		
PLUG,CMTG,TOP,9 5/8,HWE,8.16 MIN/9.06 MA	1	EA		
CENTRALIZER-9-5/8"-CSG-12 1/4"-HINGED	15	EA		
COLLAR-STOP-9 5/8"-FRICTION-HINGED	1	EA		
KIT,HALL WELD-A	1	EA		
AUTOFILL KIT,TROPHY SEAL	2	EA		
SUGAR, GRANULATED, IMPERIAL	300	LB		

Tools and Accessories

Type	Size	Qty	Make	Depth	Type	Size	Qty	Make	Depth	Type	Size	Qty	Make
Guide Shoe					Packer					Top Plug			
Float Shoe					Bridge Plug					Bottom Plug			
Float Collar					Retainer					SSR plug set			
Insert Float										Plug Container			

Stage Tool										Centralizers																													
Miscellaneous Materials																																							
Gelling Agt					Conc					Surfactant					Conc					Acid Type					Qty					Conc					%				
Treatment Fld					Conc					Inhibitor					Conc					Sand Type					Size					Qty									
Fluid Data																																							
Stage/Plug #: 1																																							
Fluid #	Stage Type	Fluid Name								Qty	Qty uom	Mixing Density lbm/gal	Yield ft3/sk	Mix Fluid Gal/sk	Rate bbl/min	Total Mix Fluid Gal/sk																							
1	Water Spacer									10.00	bbl	8.33	.0	.0	.0																								
2	CHEMICAL WASH	CHEMICAL WASH - SBM (21914)								20.00	bbl	8.4	.0	.0	.0																								
3	Water Spacer									10.00	bbl	8.33	.0	.0	.0																								
4	Lead Cement	HALLIBURTON LIGHT PREMIUM - SBM (12311)								800.0	sacks	12.4	1.9	9.68		9.68																							
0.125 lbm		POLY-E-FLAKE (101216940)																																					
5 lbm		KOL-SEAL, BULK (100064233)																																					
9.682 Gal		FRESH WATER																																					
5	Tail Cement	CMT - PREMIUM - CLASS G, 94 LB SK (100003685)								300.0	sacks	15.8	1.15	4.96		4.96																							
94 lbm		CMT - PREMIUM - CLASS G REG OR TYPE V, BULK (100003685)																																					
0.1 %		HALAD(R)-9, 50 LB (100001617)																																					
0.125 lbm		POLY-E-FLAKE (101216940)																																					
4.962 Gal		FRESH WATER																																					
6	Displacement									193.24	bbl	8.33	.0	.0	.0																								
7	Top Out	CMT - PREMIUM - CLASS G, 94 LB SK (100003685)								40.0	sacks	15.8	1.17	5.02		5.02																							
94 lbm		CMT - PREMIUM - CLASS G REG OR TYPE V, BULK (100003685)																																					
2 %		CALCIUM CHLORIDE - HI TEST PELLET (100005053)																																					
5.019 Gal		FRESH WATER																																					
Calculated Values					Pressures					Volumes																													
Displacement		193.24		Shut In: Instant					Lost Returns		NO		Cement Slurry				Pad																						
Top Of Cement		SURFACE		5 Min					Cement Returns		140		Actual Displacement		195.25		Treatment																						
Frac Gradient				15 Min					Spacers		40		Load and Breakdown				Total Job																						
Rates																																							
Circulating					Mixing					Displacement					Avg. Job																								
Cement Left In Pipe		Amount		45.19 ft		Reason		Shoe Joint																															
Frac Ring # 1 @		ID		Frac ring # 2 @		ID		Frac Ring # 3 @		ID		Frac Ring # 4 @		ID																									
The Information Stated Herein Is Correct										Customer Representative Signature																													

The Road to Excellence Starts with Safety

Sold To #: 320986	Ship To #: 3011447	Quote #:	Sales Order #: 900614877
Customer: KINDER MORGAN INC - EBUS		Customer Rep:	
Well Name: Doe Canyon		Well #: 15	API/UWI #:
Field:	City (SAP): DOVE CREEK	County/Parish: Dolores	State: Colorado
Legal Description:			
Lat:		Long:	
Contractor: Nabors		Rig/Platform Name/Num: Nabors M 13	
Job Purpose: Cement Surface Casing			Ticket Amount:
Well Type: Producing Well		Job Type: Cement Surface Casing	
Sales Person: KIDDOO, JUSTIN	Srv Supervisor: WOOD, BRANDON		MBU ID Emp #: 412753

Activity Description	Date/Time	Cht #	Rate bbl/min	Volume bbl		Pressure psig		Comments
				Stage	Total	Tubing	Casing	
Call Out	07/28/2013 05:00							
Depart Yard Safety Meeting	07/28/2013 07:25							SAFETY MEETING INVOLVING THE CMT CREW
Crew Leave Yard	07/28/2013 07:30							
Arrive At Loc	07/28/2013 10:30							1- F-450 11583925, 1- RED TIGER PUMP TRUCK 11324578, 2 - 660 BULK TRUCK TRAILERS 10025024, 10025041, FSB 10856450
Assessment Of Location Safety Meeting	07/28/2013 10:35							ASSESSMENT OF LOCATION INVOLVING THE CMT CREW
Pre-Rig Up Safety Meeting	07/28/2013 13:00							SAFETY MEETING INVOLVING THE ENTIRE CMT/ RIG CREW
Rig-Up Equipment	07/28/2013 13:05							
Pre-Job Safety Meeting	07/28/2013 14:00							SAFETY MEETING INVOLVING EVERYONE ON LOCATION
Start Job	07/28/2013 14:30							TP 2545.03 FT, FC 2499.84 FT, SJ 45.19 FT, 9 5/8 36 # K-55, 12 1/4 OH, 80 FT 14" 50 # CONDUCTOR
Test Lines	07/28/2013 14:36		0.5		0.3		3150.0	PRESSURE TEST GOOD TO 3150 PSI
Pump Spacer	07/28/2013 14:40		2		10		59.0	PUMP 10 BBLS H2O SPACER

Activity Description	Date/Time	Cht #	Rate bbl/min	Volume bbl		Pressure psig		Comments
				Stage	Total	Tubing	Casing	
Pump Spacer 1	07/28/2013 14:44		3.5		20		73.0	PUMP 20 BBLS CHEMWASH SPACER
Pump Spacer 2	07/28/2013 14:49		4		10		99.0	PUMP 10 BBLS H2O SPACER
Pump Lead Cement	07/28/2013 14:52		4		270.7		80.0	800 SKS, 1.9 YLD, 9.68 GAL H2O/SK, 270.7 BBLS @ 12.4 #, 184.4 BBLS H2O REQ
Pump Tail Cement	07/28/2013 15:59		4		61.4		160.0	300 SKS, 1.15 YLD, 4.96 GAL H2O/SK, 61.4 BBLS @ 15.8 #, 35.4 BBLS H2O REQ
Shutdown	07/28/2013 16:13							SHUT DOWN TO DROP TOP PLUG
Drop Top Plug	07/28/2013 16:13							TATTLE TAIL INDICATED PLUG LEFT THE PLUG CONTAINER
Pump Displacement	07/28/2013 16:14		5.5		193.24		65.0	CALCULATED 193.24 BBLS DISPLACEMENT, ACTUALLY PUMPED 195.25 BBLS ON TANKS MARK TO MARK TO BUMP PLUG
Slow Rate	07/28/2013 16:23		2				45.0	SLOW RATE .5 BPM WHEN GOOD CEMENT TO SURFACE
Cement Returns to Surface	07/28/2013 16:27				140		74.0	CALCULATED SHOULD CIRCULATE 184.5 BBLS CEMENT RETURNS TO SURFACE, ACTUALLY CIRCULATED 140 BBLS BACK
Bump Plug	07/28/2013 17:38		1				776.0	CALCULATED 704 PSI DIFFERENTIAL WHEN PLUG LANDS, PLUG BUMPED @ 776 PSI
Check Floats	07/28/2013 17:39						1375.0	PRESSURED UP TO 1375 PSI, RELEASED PRESSURE FLOATS HELD, FLOWED BACK 1 BBL
Activity Description	Date/Time	Cht #	Rate bbl/min	Volume bbl		Pressure psig		Comments
				Stage	Total	Tubing	Casing	

Cementing Job Log

End Job	07/28/2013 17:40							GOOD CIRCULATION THROUGHOUT THE ENTIRE CMT JOB, NO PIPE MOVEMENT,, TAGGED CEMENT ABOUT 30 FT DOWN FOR TOP OUT
Pump Cap Cement	07/29/2013 01:55		1		8		.0	MIXED AND PUMPED 40 SKS, 8 BBLS CEMENT, 1.15 YLD, 4.98 GAL/SK, 4.6 BBLS H2O
Shutdown	07/29/2013 02:10							SHUTDOWN GOOD CEMENT TO SURFACE
Pre-Rig Down Safety Meeting	07/29/2013 02:15							SAFETY MEETING INVOLVING THE CMT/RIG CREW
Rig-Down Equipment	07/29/2013 02:20							
Safety Meeting - Departing Location	07/29/2013 02:55							SAFETY MEETING INVOLVING THE CMT CREW
Depart Location for Service Center or Other Site	07/29/2013 03:00							THANK YOU FOR USING HALLIBURTON, BRANDON WOOD AND CREW

HALLIBURTON

iCem[®] Service

KINDER MORGAN INC

For: DAVE MOORE

Date: Sunday, July 28, 2013

15

DOE CANYON

900614877

Sincerely,

BRANDON WOOD

Legal Notice

Warning Disclaimer

Although the information contained in this report is based on sound engineering practices, the copyright owner(s) does (do) not accept any responsibility whatsoever, in negligence or otherwise, for any loss or damage arising from the possession or use of the report whether in terms of correctness or otherwise. The application, therefore, by the user of this report or any part thereof, is solely at the user's own risk.

Limitations of Liability

Except as expressly set forth herein, there are no representations or warranties by Halliburton, express or implied, including implied warranties of merchantability and/or fitness for a particular purpose. In no event will Halliburton or its suppliers be liable for consequential, incidental, special, punitive or exemplary damages (including, without limitation, loss of data, profits, use of hardware, or software). Customer accepts full responsibility for any investment made based on results from the Software. Any interpretations, analyses or modeling of any data, including, but not limited to Customer data, and any recommendation or decisions based upon such interpretations, analyses or modeling are opinions based upon inferences from measurements and empirical relationships and assumptions, which inferences and assumptions are not infallible, and with respect to which professional may differ. Accordingly, Halliburton cannot and does not warrant the accuracy, correctness or completeness of any such interpretation, recommendation, modeling or other products of the Software Product. As such, any interpretation, recommendation or modeling resulting from the Software for the purpose of any drilling, well treatment, production or financial decision will be at the sole risk of Customer. Under no circumstances will Halliburton or its suppliers be liable for any damages.

Table of Contents

1.0	Job Design	4
2.0	Temperature Modeling	4
3.0	Real-Time Job Summary	4
3.1	Stage Summary - Liquid Volume, Density, & Design Shutdown	4
3.2	Stage Summary - Pump Pressure & ECD	4
3.3	Stage Summary - Pump Rate & Nitrogen Rate	4
3.4	Shutdown Summary	4
3.5	Job Event Log	5
4.0	Attachments	6
4.1	KINDER MORGAN, DOE CANYON # 15, SURFACE.png	6
5.0	Custom Graphs	7
5.1	Custom Graph	7
6.0	Appendix	8
6.1	One-Minutes Real-Time Data Listing	9

1.0 Job Design

2.0 Temperature Modeling

3.0 Real-Time Job Summary

3.1 Stage Summary - Liquid Volume, Density, & Design Shutdown

3.2 Stage Summary - Pump Pressure & ECD

3.3 Stage Summary - Pump Rate & Nitrogen Rate

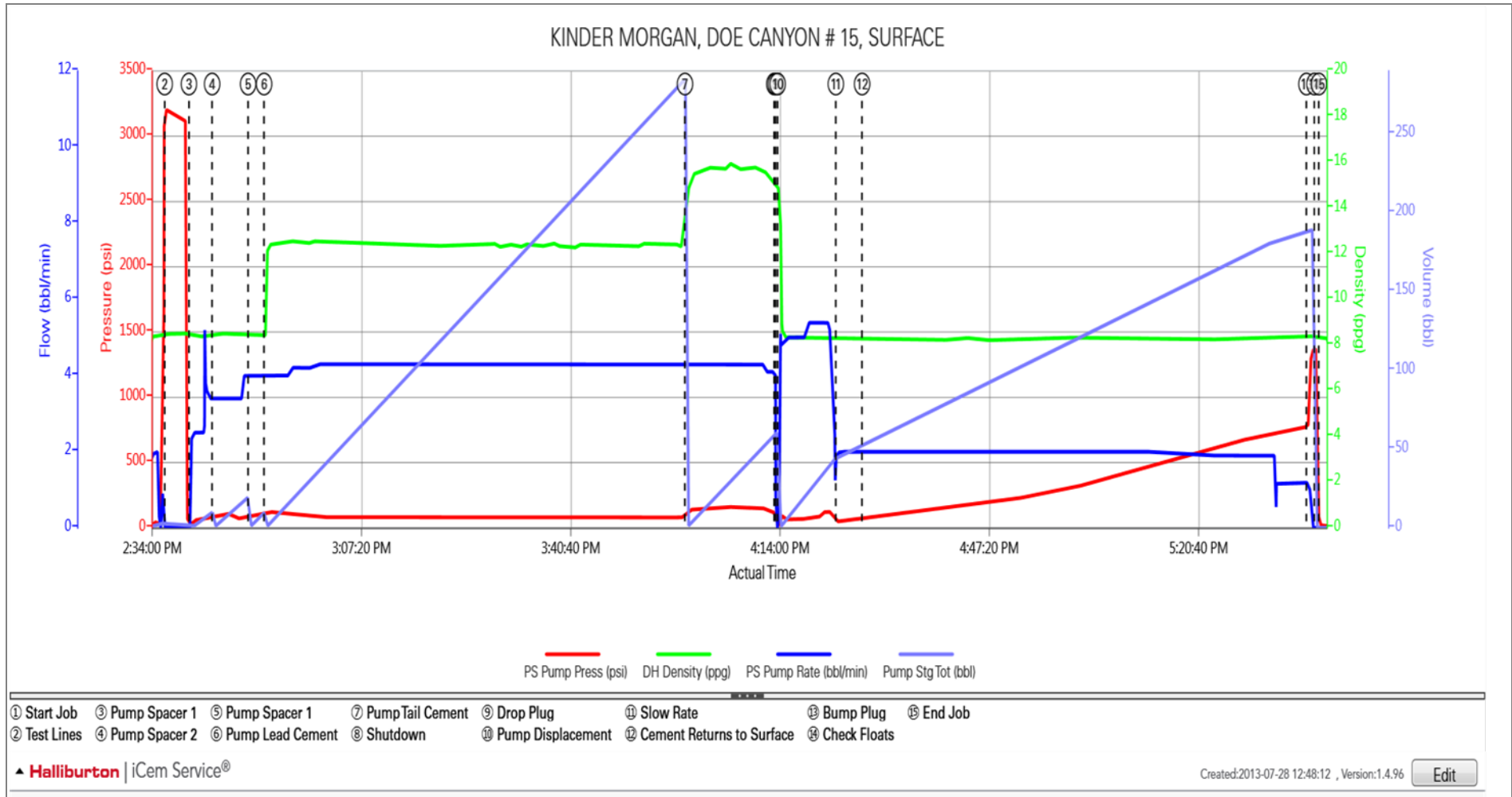
3.4 Shutdown Summary

3.5 Job Event Log

Time	Description	Graph Label	Pass-Side Pump Pressure (psi)	Downhole Density (ppg)	Pass-Side Pump Rate (bbl/min)	Pump Stage Total (bbl)	Comment
02:32:26	Start Job	Start Job	4.00	8.36	0.00	14.30	
02:36:10	Test Lines	Test Lines	3211.00	8.51	0.00	2.80	
02:40:02	Pump Spacer 1	Pump Spacer 1	10.00	8.44	1.00	0.00	
02:43:43	Pump Spacer 2	Pump Spacer 2	78.00	8.37	3.40	0.20	
02:49:27	Pump Spacer 1	Pump Spacer 1	88.00	8.38	4.00	0.40	
02:52:00	Pump Lead Cement	Pump Lead Cement	104.00	8.40	4.00	0.00	
03:59:02	Pump Tail Cement	Pump Tail Cement	106.00	14.24	4.30	0.10	
04:13:15	Shutdown	Shutdown	90.00	15.07	0.00	60.50	
04:13:30	Drop Top Plug	Drop Plug	26.00	14.87	0.00	60.50	
04:13:48	Pump Displacement	Pump Displacement	12.00	15.02	1.00	0.00	
04:23:04	Slow Rate	Slow Rate	48.00	8.30	2.00	44.60	
04:27:15	Cement Returns to Surface	Cement Returns to Surface	74.00	8.23	2.00	53.00	
05:38:01	Bump Plug	Bump Plug	776.00	8.30	1.20	188.70	
05:39:17	Check Floats	Check Floats	1375.00	8.37	0.00	0.00	
05:40:00	End Job	End Job	23.00	8.27	0.00	0.00	

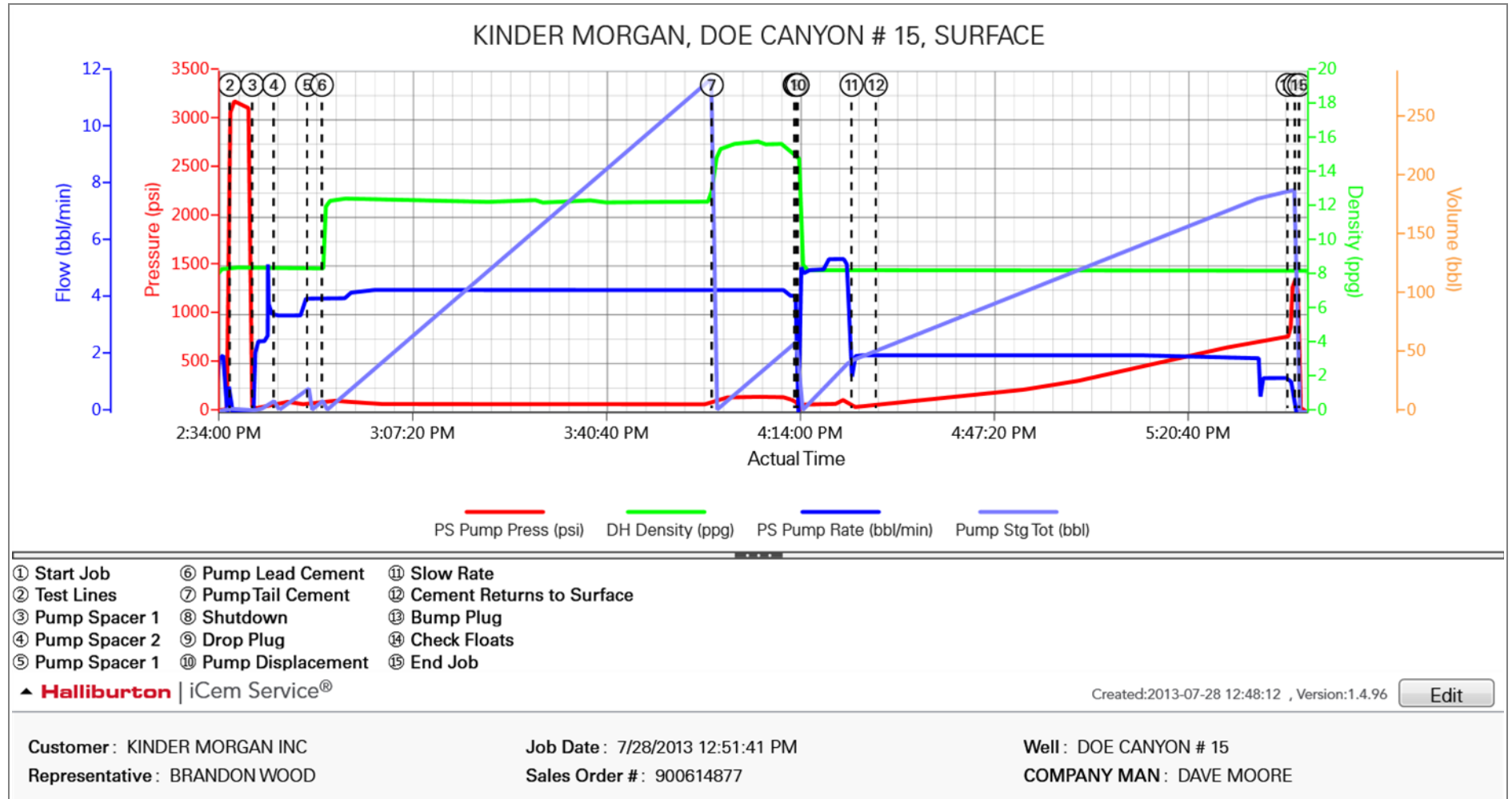
4.0 Attachments

4.1 KINDER MORGAN, DOE CANYON # 15, SURFACE.png



5.0 Custom Graphs

5.1 Custom Graph



6.0 Appendix

6.1 One-Minutes Real-Time Data Listing
