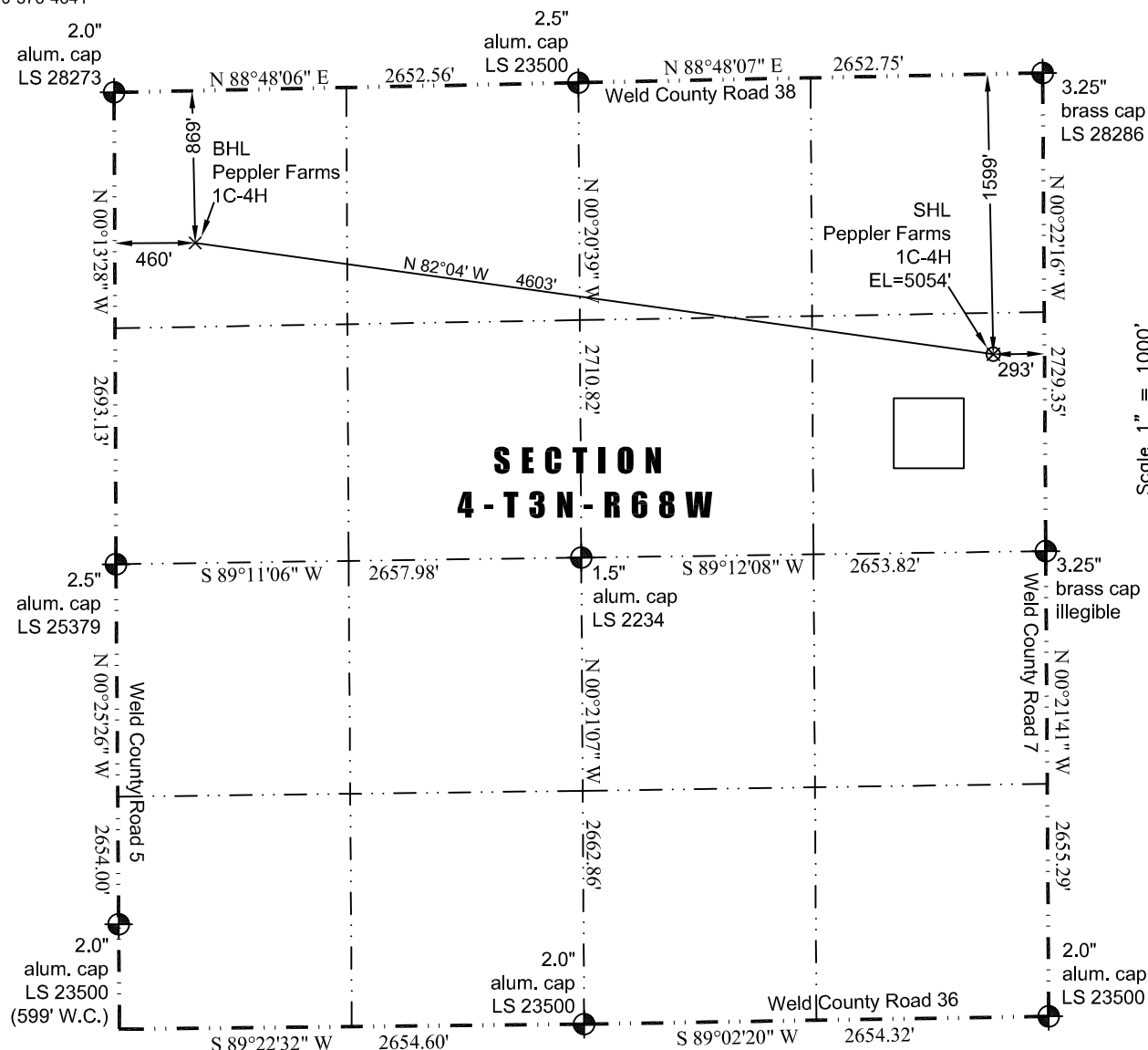


8114 Northstar Drive  
Windsor, Colorado 80528  
P. 970-576-4641

THIS MAP DOES NOT REPRESENT A BOUNDARY SURVEY



Latitude: N 40.25814° (BHL: 40.25995°)  
Longitude: W 104.99973° (BHL: 105.01605°)  
PDOP: 2.0

Building/Building Unit: 474' northeast      Above Ground Utility: 261' east  
Public Road: 279' east      Railroad: +5,280'  
Property Line: 293' east      Well Window: SHL is 303' outside  
Existing Well: WCLI USX S 33-16, 2,283' northwest  
High Occupancy Building Unit: +5,280'

- 1) Bearings and distances based on NAD 83 Colorado North State Plane Coordinate, using RTK GPS observations taken 10/9/13 by operator John Rice.
- 2) Conversion factor to ground (1.0002813141).
- 3) Elevations based on NAVD 88 GPS heights and Geoid 2003 corrections.
- 4) See Location Drawing for visible improvements within 400 feet of Pad Site.
- 5) The surface use is a cultivated field.

I hereby certify that this Well Location Certificate was prepared by me or under my direct supervision on 10/9/2013 for and on behalf of EnCana Oil & Gas (USA) Inc. That it is not a Land Survey Plat or an Improvement Survey Plat and that it is not to be relied upon for establishment of fences, buildings, or other future improvement lines.

John Robert McGehee LS#38219  
Well: Peppler Farms 1C-4H WLC