

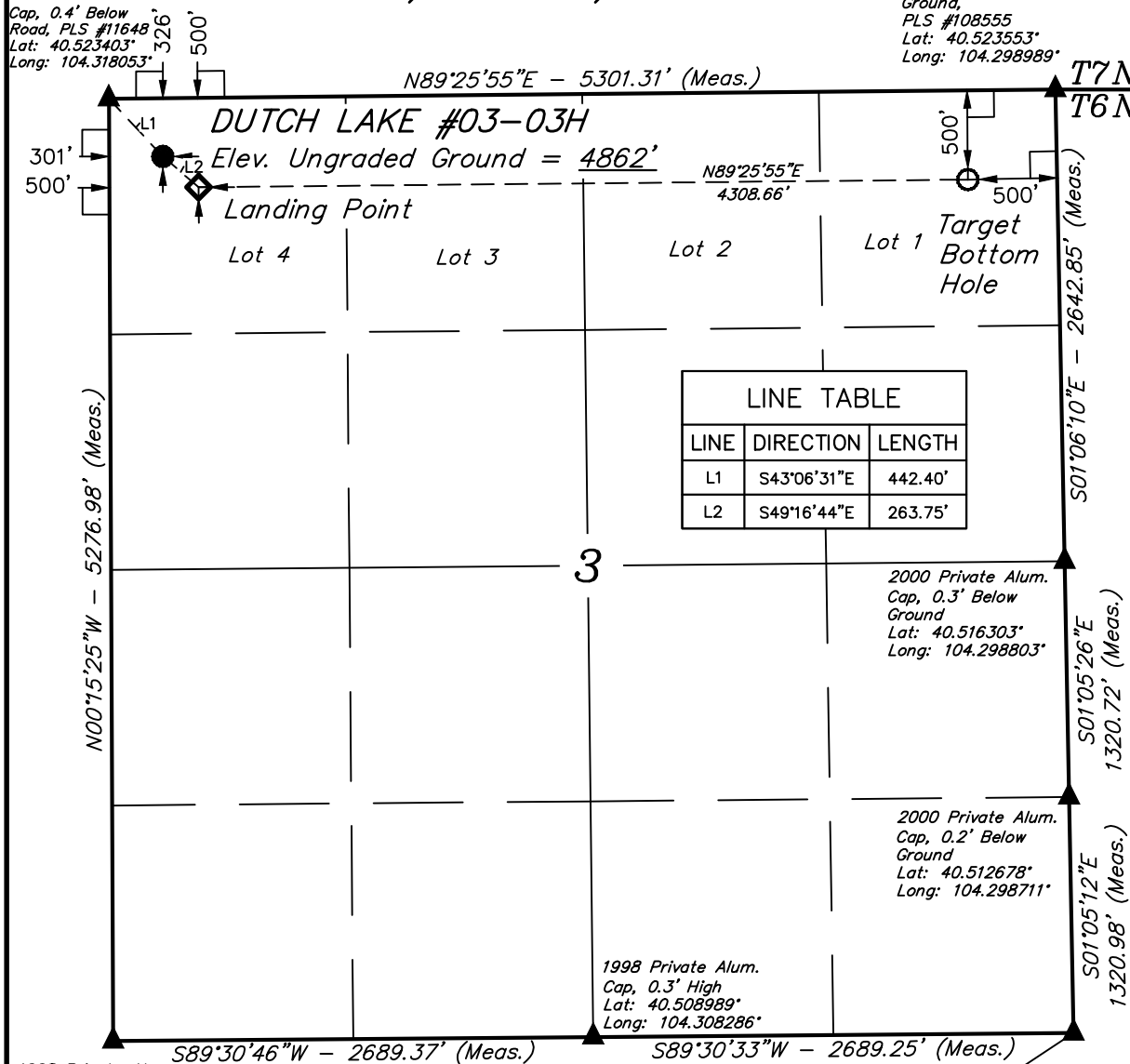
T6N, R62W, 6th. P.M.

1998 Private Alum.
Cap, 0.4' Below
Road, PLS #11648
Lat: 40.523403°
Long: 104.318053°

2000 Private Alum.
Cap, 0.5' Below
Ground,
PLS #108555
Lat: 40.523553°
Long: 104.298989°

BILL BARRETT CORPORATION

Well location, DUTCH LAKE #03-03H, located as shown in Lot 4 of Section 3, T6N, R62W, 6th. P.M., Weld County, Colorado.



1998 Private Alum.
Cap, Flush w/Ground
PLS #11648
Lat: 40.508919°
Long: 104.317956°

1998 Private Alum.
Cap, 0.5' Below
Ground
Lat: 40.509056°
Long: 104.298617°

PDOP = 2.2

LINE TABLE

| LINE | DIRECTION | LENGTH |
|------|-------------|---------|
| L1 | S43°06'31"E | 442.40' |
| L2 | S49°16'44"E | 263.75' |

BASIS OF ELEVATION

SPOT ELEVATION LOCATED AT THE NORTHEAST CORNER OF SECTION 24, T5N, R62W, 6th. P.M. TAKEN FROM THE POINT OF ROCKS, QUADRANGLE, COLORADO, WELD COUNTY, 7.5 MINUTE QUAD (TOPOGRAPHIC MAP) PUBLISHED BY THE UNITED STATES DEPARTMENT OF THE INTERIOR, GEOLOGICAL SURVEY. SAID ELEVATION IS MARKED AS BEING 4530 FEET.

BASIS OF BEARINGS

BASIS OF BEARINGS IS A G.P.S. OBSERVATION.

LEGEND:

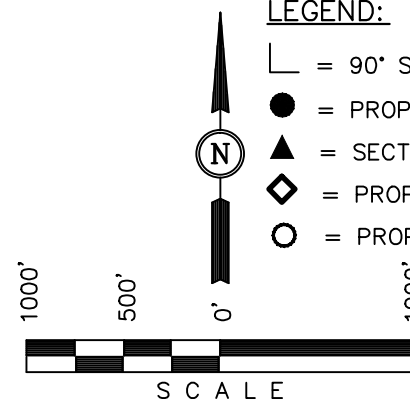
└─┘ = 90° SYMBOL

● = PROPOSED WELL HEAD.

▲ = SECTION CORNERS LOCATED.

◆ = PROPOSED LANDING POINT.

○ = PROPOSED TARGET BOTTOM HOLE.



CERTIFICATE

THIS IS TO CERTIFY THAT THE ABOVE PLAT WAS PREPARED FROM FIELD NOTES OF ACTUAL SURVEYS MADE BY ME OR UNDER MY SUPERVISION AND THAT THE SAME ARE TRUE AND CORRECT TO THE BEST OF MY KNOWLEDGE AND BELIEF.

REGISTERED LAND SURVEYOR
REGISTRATION NO. 17492
STATE OF COLORADO
08-21-13

REV.: 08-21-13 B.D.H.
REV.: 10-23-12 J.G.G.
REV.: 08-17-12 B.D.H.

UINTAH ENGINEERING & LAND SURVEYING
85 SOUTH 200 EAST - VERNAL, UTAH 84078
(435) 789-1017

| NAD 83 (TARGET BOTTOM HOLE) | NAD 83 (LANDING POINT) | NAD 83 (SURFACE LOCATION) |
|--|--|--|
| LATITUDE = 40°31'19.80" (40.522167) | LATITUDE = 40°31'19.36" (40.522044) | LATITUDE = 40°31'21.06" (40.522517) |
| LONGITUDE = 104°18'02.71" (104.300753) | LONGITUDE = 104°18'58.48" (104.316244) | LONGITUDE = 104°19'01.07" (104.316964) |
| NAD 27 (TARGET BOTTOM HOLE) | NAD 27 (LANDING POINT) | NAD 27 (SURFACE LOCATION) |
| LATITUDE = 40°31'19.86" (40.522183) | LATITUDE = 40°31'19.42" (40.522061) | LATITUDE = 40°31'21.12" (40.522533) |
| LONGITUDE = 104°18'00.88" (104.300244) | LONGITUDE = 104°18'56.66" (104.315739) | LONGITUDE = 104°18'59.25" (104.316458) |
| STATE PLANE NAD 83 COLORADO NORTH | STATE PLANE NAD 83 COLORADO NORTH | STATE PLANE NAD 83 COLORADO NORTH |
| N: 1435320.81 E: 3333390.99 | N: 1435217.95 E: 3329084.65 | N: 1435387.35 E: 3328882.59 |
| STATE PLANE NAD 27 COLORADO NORTH | STATE PLANE NAD 27 COLORADO NORTH | STATE PLANE NAD 27 COLORADO NORTH |
| N: 435321.28 E: 2333540.51 | N: 435218.46 E: 2329234.15 | N: 435387.86 E: 2329032.10 |

| | | |
|-------------------------|----------------------------------|-------------------------|
| SCALE 1" = 1000' | DATE SURVEYED: 12-16-10 | DATE DRAWN: 01-05-11 |
| PARTY R.P. M.S. J.I. | REFERENCES G.L.O. PLAT | |
| WEATHER COOL | FILE BILL BARRETT CORPORATION | |