

## The Road to Excellence Starts with Safety

Sold To #: 303209		Ship To #: 3109764		Quote #:		Sales Order #: 900794680	
Customer: K P KAUFFMAN CO, INC. EBIZ				Customer Rep: Laramesa, Susi			
Well Name: Sucklabrown			Well #: 16		API/UWI #: 05-123-08877		
Field: WATTENBERG		City (SAP): FORT LUPTON		County/Parish: Weld		State: Colorado	
Contractor: WORKOVER			Rig/Platform Name/Num: Workover				
Job Purpose: Recement Service							
Well Type: Development Well			Job Type: Recement Service				
Sales Person: MCKAY, ADAM			Srv Supervisor: FANTASIA, JOSEPH			MBU ID Emp #: 485445	

## Job Personnel

HES Emp Name	Exp Hrs	Emp #	HES Emp Name	Exp Hrs	Emp #	HES Emp Name	Exp Hrs	Emp #
FANTASIA, JOSEPH Brandon	5.5	485445	MARKOVICH, STEVEN Michael	5.5	502964	TORREY, SPENCER Kenneth	5.5	549837

## Equipment

HES Unit #	Distance-1 way	HES Unit #	Distance-1 way	HES Unit #	Distance-1 way	HES Unit #	Distance-1 way
11362287C	8 mile	11566182	8 mile	11645065	8 mile		

## Job Hours

Date	On Location Hours	Operating Hours	Date	On Location Hours	Operating Hours	Date	On Location Hours	Operating Hours
10-03-2013	5.5	4						
TOTAL			Total is the sum of each column separately					

## Job

## Job Times

Formation Name	Top	Bottom	Called Out	Date	Time	Time Zone
Formation Depth (MD)			On Location	03 - Oct - 2013	07:30	MST
Form Type	BHST		Job Started	03 - Oct - 2013	09:00	MST
Job depth MD	1029. ft	Job Depth TVD	Job Completed	02 - Oct - 2013	12:30	GMT
Water Depth		Wk Ht Above Floor	Departed Loc	03 - Oct - 2013	13:00	MST
Perforation Depth (MD)	From	To				

## Well Data

Description	New / Used	Max pressure psig	Size in	ID in	Weight lbm/ft	Thread	Grade	Top MD ft	Bottom MD ft	Top TVD ft	Bottom TVD ft
10" Open Hole				10.				766.	1341.		
4-1/2" Production Casing	Unknown		4.5	4.	11.6			.	1341.		
8-5/8" Surface Casing	Unknown		8.625	8.097	24.			.	766.		
1-1/4" Tubing	Unknown		1.25	.824	2.4			.	1029.		

## Tools and Accessories

Type	Size	Qty	Make	Depth	Type	Size	Qty	Make	Depth	Type	Size	Qty	Make
Guide Shoe					Packer					Top Plug			
Float Shoe					Bridge Plug					Bottom Plug			
Float Collar					Retainer					SSR plug set			
Insert Float										Plug Container			
Stage Tool										Centralizers			

## Miscellaneous Materials

Gelling Agt	Conc	Surfactant	Conc	Acid Type	Qty	Conc	%
Treatment Fld	Conc	Inhibitor	Conc	Sand Type	Size	Qty	

## Fluid Data

Stage/Plug #: 1										
Fluid #	Stage Type	Fluid Name	Qty	Qty uom	Mixing Density lbm/gal	Yield ft3/sk	Mix Fluid Gal/sk	Rate bbl/min	Total Mix Fluid Gal/sk	

2	12# Surface VariCem	VARICEM (TM) CEMENT (452009)	175.0	sacks	12.	2.2	12.53	2.0	12.53
	3 %	SALT, 100 LB BAG (100003652)							
	1.5 %	ECONOLITE (100001580)							
	3 lbm	SILICALITE - COMPACTED, 50 LB SK (100012223)							
	12.529 Gal	FRESH WATER							
3	HalCem	HALCEM (TM) SYSTEM (452986)	50.0	sacks	15.8	1.15	5.0	2	5.0
	5 Gal	FRESH WATER							
<b>Calculated Values</b>		<b>Pressures</b>		<b>Volumes</b>					
Displacement		Shut In: Instant		Lost Returns		Cement Slurry		Pad	
Top Of Cement		5 Min		Cement Returns		Actual Displacement		Treatment	
Frac Gradient		15 Min		Spacers		Load and Breakdown		Total Job	
<b>Rates</b>									
Circulating		Mixing		Displacement		Avg. Job			
Cement Left In Pipe	Amount	0 ft	Reason	Shoe Joint					
Frac Ring # 1 @	ID	Frac ring # 2 @	ID	Frac Ring # 3 @	ID	Frac Ring # 4 @	ID		
<b>The Information Stated Herein Is Correct</b>				Customer Representative Signature					

## The Road to Excellence Starts with Safety

<b>Sold To #:</b> 303209		<b>Ship To #:</b> 3109764		<b>Quote #:</b>		<b>Sales Order #:</b> 900794680	
<b>Customer:</b> K P KAUFFMAN CO, INC. EBIZ				<b>Customer Rep:</b> Laramesa, Susi			
<b>Well Name:</b> Sucklabrown			<b>Well #:</b> 16		<b>API/UWI #:</b> 05-123-08877		
<b>Field:</b> WATTENBERG		<b>City (SAP):</b> FORT LUPTON		<b>County/Parish:</b> Weld		<b>State:</b> Colorado	
<b>Legal Description:</b>							
<b>Lat:</b> N 0 deg. OR N 0 deg. 0 min. 0 secs.				<b>Long:</b> E 0 deg. OR E 0 deg. 0 min. 0 secs.			
<b>Contractor:</b> WORKOVER			<b>Rig/Platform Name/Num:</b> Workover				
<b>Job Purpose:</b> Recement Service						<b>Ticket Amount:</b>	
<b>Well Type:</b> Development Well			<b>Job Type:</b> Recement Service				
<b>Sales Person:</b> MCKAY, ADAM			<b>Srvc Supervisor:</b> FANTASIA, JOSEPH			<b>MBU ID Emp #:</b> 485445	

Activity Description	Date/Time	Cht #	Rate bbl/ min	Volume bbl		Pressure psig		Comments
				Stage	Total	Tubing	Casing	
Arrive at Location from Service Center	10/03/2013 07:30							ARRIVE @ LOCATION. RIG READY. TUBING SET @ 1029'
Assessment Of Location Safety Meeting	10/03/2013 07:45							PERFORM PRE RIG UP SAFETY MEETING PRIOR TO SPOTTING AND RIGGING UP EQUIPMENT.
Start Job	10/03/2013 09:00							PERFORM PRE JOB SAFETY MEETING WITH ALL PRESENT PERSONELL
Test Lines	10/03/2013 09:22							PRESSURE TEST LINES TO 3000 PSI.
Pump Spacer 1	10/03/2013 09:24		2	5			100.0	PUMP 5 BBLS WATER AHEAD TO CLEAR TUBING AND ESTABLISH CIRCULATION.
Pump Lead Cement	10/03/2013 09:33		2	68			93.0	175 SKS SURFACE VARICEM MIXED AT 12 PPG USING SUPPLIED WATER. DENSITY VERIFIED BY SCALE.
Pump Tail Cement	10/03/2013 10:05		2	10			89.0	50 SKS G CEMENT MIXED AT 15.8 PPG WITH (100 LBS) 2% CALCIUM CHLORIDE ADDED ON THE FLY USING SUPPLIED WATER. DENSITY VERIFIED BY SCALE.
Activity Description	Date/Time	Cht #	Rate bbl/ min	Volume bbl		Pressure psig		Comments
				Stage	Total	Tubing	Casing	

Sold To #: 303209

Ship To #: 3109764

Quote #:

Sales Order #: 900794680

SUMMIT Version: 7.3.0106

Thursday, October 03, 2013 12:36:00

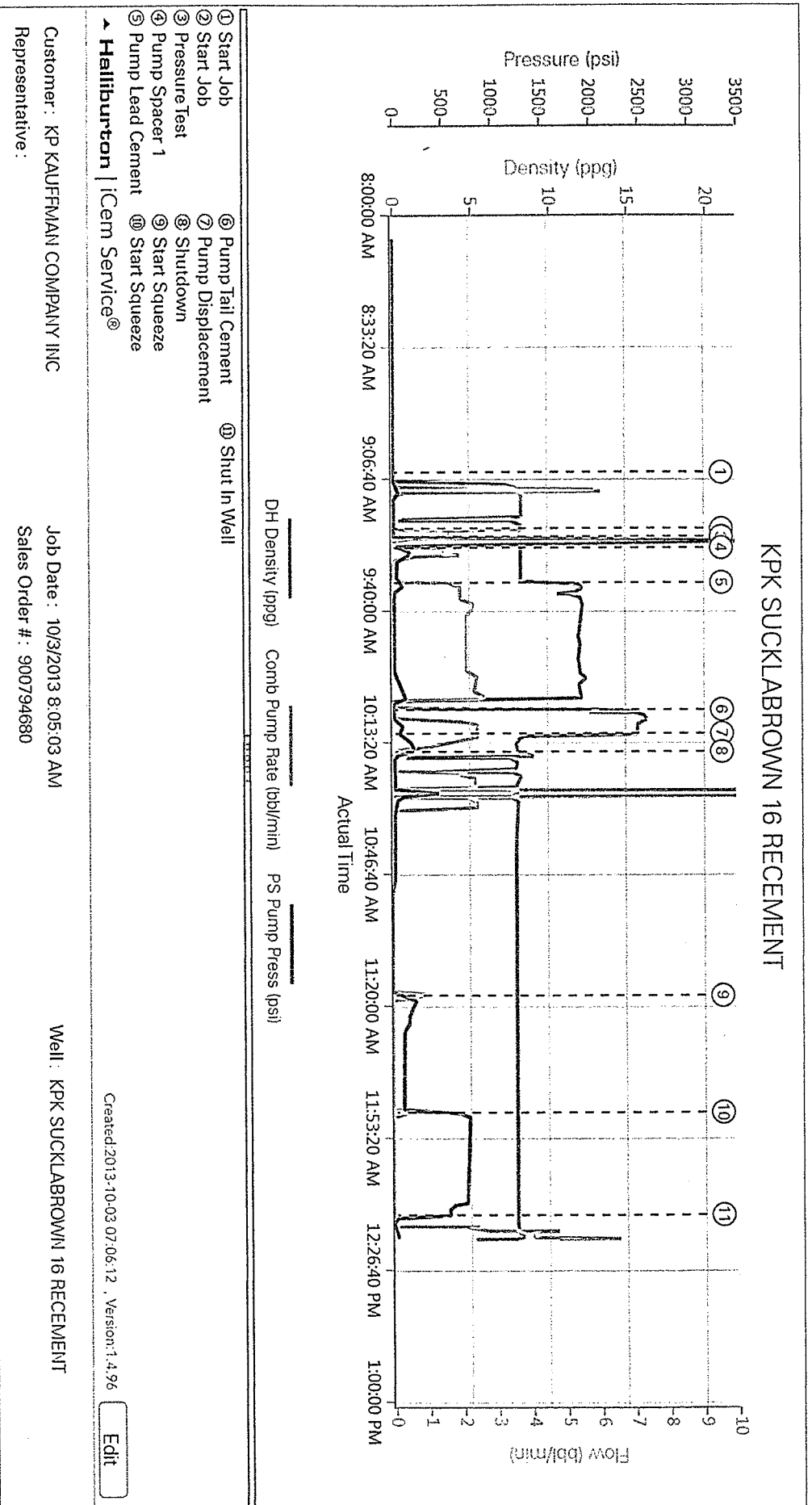
Pump Displacement	10/03/2013 10:11		2	6			230.0	DISPLACE TUBING CAPACITY + 2.5 BBLS. 6 BBLS TOTAL DISPLACEMENT.
Shutdown	10/03/2013 10:16							SHUTDOWN AND WOC TO ALLOW CEMENT TO THICKEN.
Start Squeeze	10/03/2013 11:17		0.5	0.5			289.0	PUMPED 1/2 BBL AND SAW SMALL CLIMB IN PRESSURE BEFORE IT LEVELED OFF @ 289 PSI. SHUTDOWN TO WOC 30 MINUTES.
Start Squeeze	10/03/2013 11:47		0.5	0.3			789.0	PUMPED 1/3 BBL AND PRESSURE CLIMBED TO 789 BEFORE SHUTTING DOWN. PRESSURE FELL OFF SLOWLY APPROX 3-4 PSI/ MINUTE. THEN FELL SLOWER AROUND 750 PSI.
Shut In Well	10/03/2013 12:13						590.0	WELL WAS SHUT IN @ 590 PSI.
End Job	10/03/2013 13:00							PERFORM PRE RIG DOWN SAFETY MEETING PRIOR TO RIGGING UP EQUIPMENT.

## 4.5 Job Event Log

Time	Description	Graph Label	Downhole Density (ppg)	Combined Pump Rate (bbl/min)	Pass-Side Pump Pressure (psi)	Comment
09:05:24	Start Job	Start Job	-0.55	0.00	25.00	
09:19:38	Start Job	Start Job	8.26	0.00	25.00	
09:21:37	Pressure Test	Pressure Test	8.29	0.00	1583.00	
09:24:28	Pump Spacer 1	Pump Spacer 1	8.40	1.50	154.00	
09:33:15	Pump Lead Cement	Pump Lead Cement	12.35	2.00	153.00	
10:05:22	Pump Tail Cement	Pump Tail Cement	15.66	0.00	27.00	
10:11:23	Pump Displacement	Pump Displacement	10.88	2.50	78.00	
10:16:02	Shutdown	Shutdown	8.24	0.00	199.00	
11:17:45	Start Squeeze	Start Squeeze	7.99	0.50	264.00	
11:47:15	Start Squeeze	Start Squeeze	8.06	0.00	782.00	
12:13:11	Shut In Well	Shut In Well	8.04	0.00	364.00	

## 5.0 Custom Graphs

### 5.1 Custom Graph



HALLIBURTON

---

K P KAUFFMAN CO, INC. EBIZ

---

Sucklabrown 16  
WATTENBERG  
Weld County , Colorado

Recement Service  
02-Oct-2013

Job Site Documents

# HALLIBURTON

## Field Ticket

<b>Field Ticket Number:</b> 900794680		<b>Field Ticket Date:</b> Thursday, October 03, 2013	
<b>Bill To:</b> K P KAUFFMAN CO, INC. EBIZ 1675 BROADWAY STE 2800-DO NOT MAIL DENVER, CO 80202		<b>Job Name:</b> Annular Fill <b>Order Type:</b> Streamline Order (ZOH) <b>Well Name:</b> Sucklabrown 16 <b>Company Code:</b> 1100 <b>Customer PO No.:</b> NA <b>Shipping Point:</b> Ft Lupton, CO, USA <b>Sales Office:</b> Rocky Mountains BD <b>Well Type:</b> Oil <b>Well Category:</b> Development	
<b>Ship To:</b> SUCKLA-BROWN UNIT #16,WELD SUCKLA-BROWN UNIT #16 3109784 S10-T1N-R67W FORT LUPTON, CO 80621			

Material	Description	QTY	UOM	Base Amt	Unit Amt	Gross Amount	Discount	Net Amount
14099	CMT RECEMENT BOM	1	JOB	0.00	0.00	0.00		0.00
16091	ZI - PUMPING CHARGE	1	EA	0.00	5,290.00	5,290.00	50%	2,645.00
	DEPTH	1029						
	FEET/METERS (FT/M)		FT					
452009	VARICEM (TM) CEMENT	175	SK			5,960.09	50.0%	2,980.04
100003652	SALT,MORTON-PUREX-FINE	450	LB	0.00	0.57	256.50	50%	128.25
100001580	ECONOLITE-ADDITIVE	226	LB	0.00	5.59	1,263.34	50%	631.67
100012223	SILICALITE COMPACTED	526	LB	0.00	3.22	1,693.72	50%	846.86
432904	CMT, ROCKIES SG SETUP	1	EA			8,077.00	43.82%	4,538.00
432905	CMT, ROCKIES SG MILEAGE	16	MI			263.36	47.24%	138.96
	Number of Units	1						
432906	CMT, ROCKIES SG DELIVERY	16	TNM			1,668.02	49.42%	843.61
	NUMBER OF TONS	10.44						
452986	HALCEM (TM) SYSTEM	50	SK			2,213.00	50.0%	1,106.50
100008028	SUGAR, GRANULATED, IMPERIAL	50	LB	0.00	6.96	348.00	50%	174.00
101509387	CALCIUM CHLORIDE, PELLET	2	SK	0.00	180.30	360.60	50%	180.30
				<b>Totals</b>	<b>USD</b>	<b>27,393.63</b>	<b>13,180.44</b>	<b>14,213.19</b>

Halliburton Rep: JOSEPH FANTASIA  
 Customer Agent: Susi Laramesa  
 Halliburton Approval