

VISIBLE IMPROVEMENTS TABLE			
#	DESCRIPTION	DISTANCE	BEARING
1	UTILITY POLE	475'	N15E
2	UTILITY POLE	494'	N18E
3	UTILITY POLE	536'	N31E
4	UTILITY POLE	607'	N41E
5	BUILDING	1045'	S87E
6	BUILDING	961'	S86E
7	HYDRANT	597'	S76E
8	BUILDING	751'	S63E
9	HYDRANT	341'	S65E
10	SANITARY SEWER MAIN	414'	S63E
11	BUILDING	854'	S29E
12	BUILDING	747'	S2E
13	RAIL	703'	S2E
14	UTILITY POLE	1145'	S38W
15	UTILITY POLE	1019'	S40W
16	UTILITY POLE	892'	S42W
17	UTILITY POLE	770'	S45W
18	UTILITY POLE	652'	S50W
19	UTILITY POLE	543'	S57W

VISIBLE IMPROVEMENTS TABLE			
#	DESCRIPTION	DISTANCE	BEARING
20	LIGHT POLE	887'	S60W
21	UTILITY POLE	445'	S67W
22	UTILITY POLE	370'	S82W
23	LIGHT POLE	550'	N79W
24	UTILITY POLE	444'	N62W
25	RAIL	364'	N61W
26	UTILITY POLE	369'	N40W
27	HWY 85	397'	N23W
28	UTILITY POLE	372'	N9W
29	WATER WELL	936'	S88E
30	WATER WELL	686'	S71E
31	WATER WELL	658'	S14E
32	WATER WELL	901'	S0W
33	WATER WELL	732'	S73W
34	GREELEY COMMERCE CENTER 4 #20-2H5	497'	N40E
35	GREELEY COMMERCE CENTER 3 #20-1H5	737'	N90E
36	EXISTING PRODUCTION TANKS	786'	N85E
37	EXISTING SEPERATOR	712'	N83E

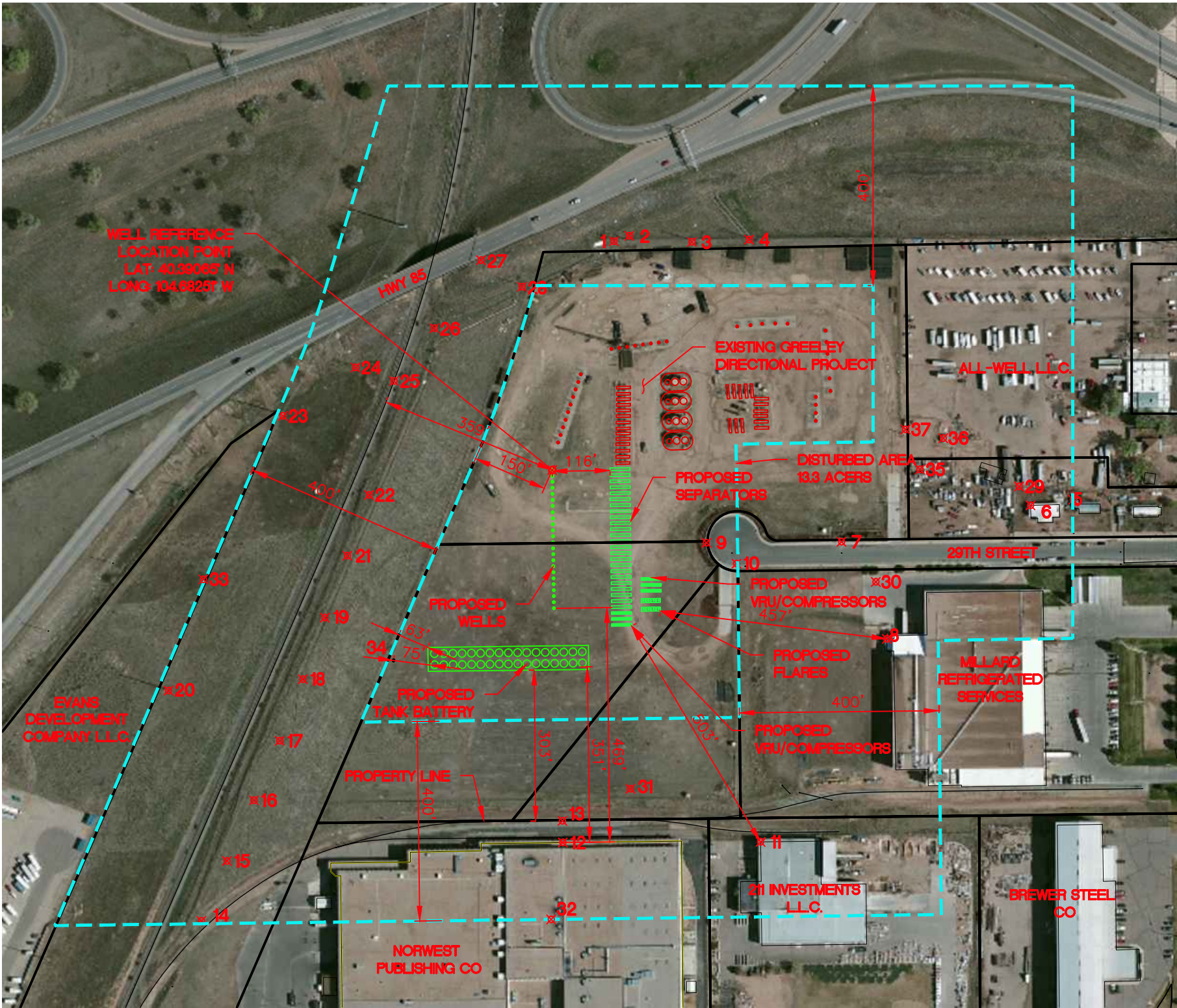
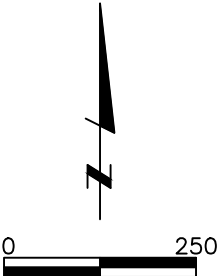
EXISTING EQUIPMENT

WELLS	34
SEPARATORS	28
OIL TANKS	8
WATER TANKS	4
VRU	1
FLARES	3

OPERATOR
MINERAL RESOURCES, INC
PO BOX 328
GREELEY, CO 80632
(970) 352-9446

PROPOSED EQUIPMENT

WELLS	24
SEPARATORS	24
OIL TANKS	30
WATER TANKS	4
VRU	3
FLARES	8



NOTES

- ALL DISTANCES REPORTED IN THE VISIBLE IMPROVEMENTS TABLE ARE MEASURED FROM THE WELL REFERENCE LOCATION.
- EXISTING FEATURES ARE SHOWN IN RED.
- PROPOSED FEATURES ARE SHOWN IN GREEN.



4715 Innovation Drive
Fort Collins, CO 80525
www.LRA-Inc.com

970.226.0342 | P
970.226.0879 | F

GREELEY DIRECTIONAL PROJECT
LOCATION DRAWING

drawn by	designed by	reviewed by	project - task number	date	book and page	revisions
SSZ	EKM	EKM	0213001.01	10/10/13		
path/filename P:_Engineering\0213001.01\DRAWINGS\EXHIBITS\Form 2A\0213001-01_Location_Drawing.dwg						

COGCC ID: 332837
NE/4,NE/4, SEC20, T5N, R65W