



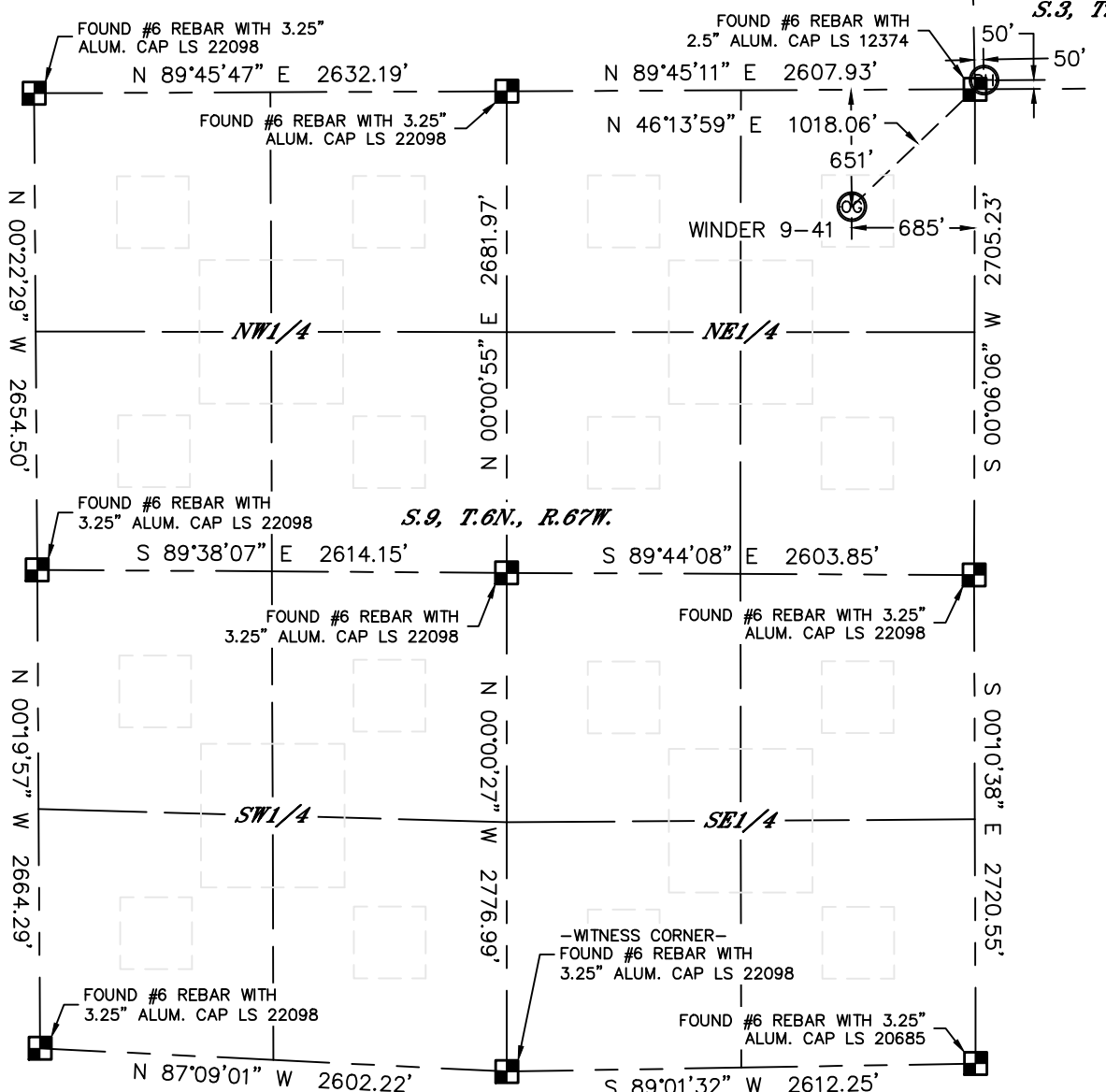
Lat40°, Inc. 1635 Foxtrail Drive, Suite 325 Loveland, CO 970-776-3321

WELL LOCATION CERTIFICATE

THIS MAP DOES NOT REPRESENT A BOUNDARY SURVEY

SECTION: 9
TOWNSHIP: 6N
RANGE: 67W

S.3, T.6N., R.67W.



In accordance with a request from Jonathan Runge with EXTRACTION OIL & GAS, LLC Lat40°, Inc. has determined the surface location of the WINDER 9-41 to be 651' from the NORTH line and 685' from the EAST line as measured at right angles from the section lines of Section 9, Township 6 North, Range 67 West and the bottom hole to be 50' from the SOUTH line and 50' from the WEST line as measured at right angles from the section lines of Section 3, Township 6 North, Range 67 West of the Sixth Principal Meridian, County of Weld, State of Colorado.

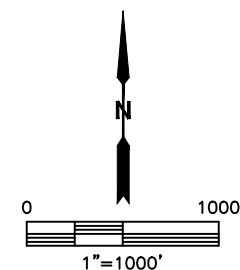
I hereby state that this Well Location Certificate was prepared by me, or under my direct supervision, that the fieldwork was completed on 9/19/2013, for and on behalf of EXTRACTION OIL & GAS, LLC That this is not a Land Survey Plat or an Improvement Survey Plat, and that it is not to be relied upon for establishment of fence, building, or other future improvement lines.

SURFACE LOCATION

LAT: 40.50722N
LONG: 104.89128W
PDOP: 2.3
ELEV: 4868'
1/4,1/4: NE1/4NE1/4
NEAREST PROPERTY LINE: 651' NORTH

BOTTOM HOLE

LAT: 40.50914N
LONG: 104.88862W



NOTE:

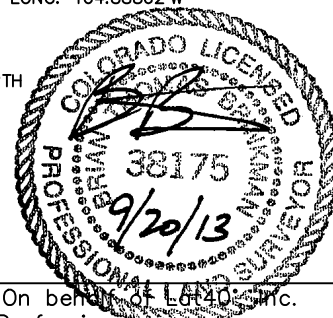
- 1) Bearings shown are Grid Bearings of the Colorado State Plane Coordinate System, North Zone, North American Datum 1983/2007. The lineal dimensions as contained herein are based upon the "U.S. Survey Foot."
- 2) Ground elevations are based on an observed GPS elevation (NAVD 1988 DATUM).
- 3) SURFACE USE: CROP FIELD
- 4) INSTRUMENT OPERATOR: MARK ANGELL

LEGEND

- = ALIQUOT MONUMENT AS DESCRIBED
- = CALCULATED POSITION

SHEET 1 OF 2

Brian T. Brinkman—On behalf of Lat40°, Inc.
Colorado Licensed Professional Land Surveyor No. 38175
DATE: 9/20/2013
PROJECT#: 2013132



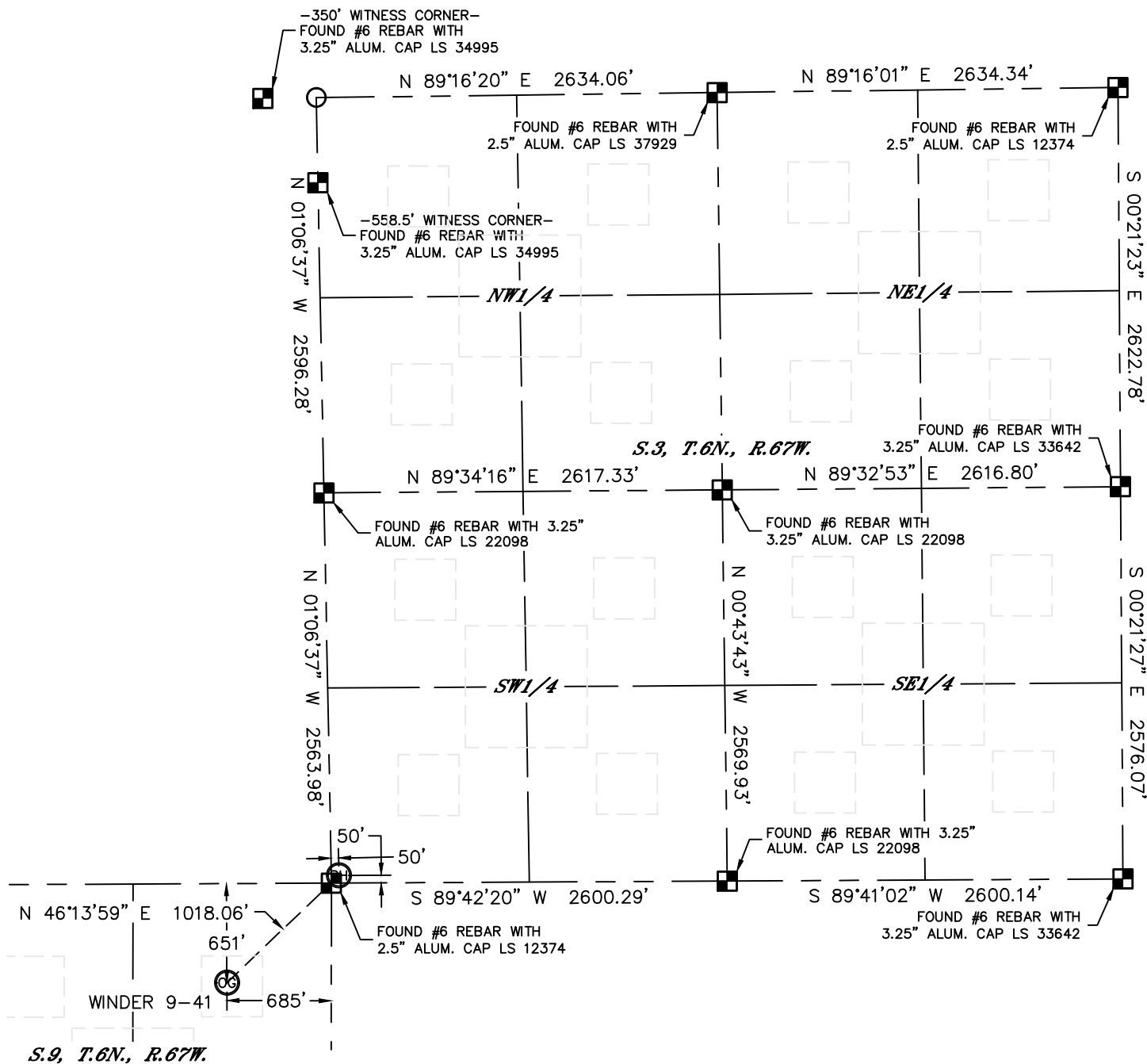


Lat40°, Inc. 1635 Foxtrail Drive, Suite 325 Loveland, CO 970-776-3321

WELL LOCATION CERTIFICATE

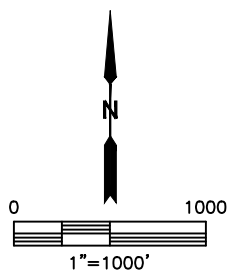
THIS MAP DOES NOT REPRESENT A BOUNDARY SURVEY

SECTION: 9
TOWNSHIP: 6N
RANGE: 67W



LEGEND

- = ALIQUOT MONUMENT AS DESCRIBED
- = CALCULATED POSITION



SHEET 2 OF 2

Brian T. Brinkman—On behalf of Lat40, Inc.
Colorado Licensed Professional Land Surveyor No. 38175
DATE: 9/20/2013
PROJECT#: 2013132

