

Schlumberger

Company: **OMIMEX PETROLEUM INC.**

Well: **Bledsoe 9-1-5-45**

Field: **Ballyneal**

County: **Yuma**

State: **Colorado**

Well: **Bledsoe 9-1-5-45**
Field: **Ballyneal**
County: **Yuma**
State: **Colorado**

Field: **Ballyneal**
County: **Yuma**
State: **Colorado**

County: **Yuma** State: **Colorado**

[illegible]

Logging Date					
Run Number					
Depth Driller					
Schlumberger Depth					
Bottom Log Interval					
Top Log Interval					
Casing Driller Size @ Depth		@			
Casing Schlumberger					
Bit Size					
Type Fluid In Hole					
Density		Viscosity			
Fluid Loss		PH			
Source Of Sample					
RM @ Measured Temperature		@			
RMF @ Measured Temperature		@			
RMC @ Measured Temperature		@			
Source RMF		RMF			
RM @ MRT		RMF @ MRT	@		@
Maximum Recorded Temperatures					
Circulation Stopped		Time			
Logger On Bottom		Time			
Unit Number		Location			
Recorded By					
Witnessed By					

DISCLAIMER

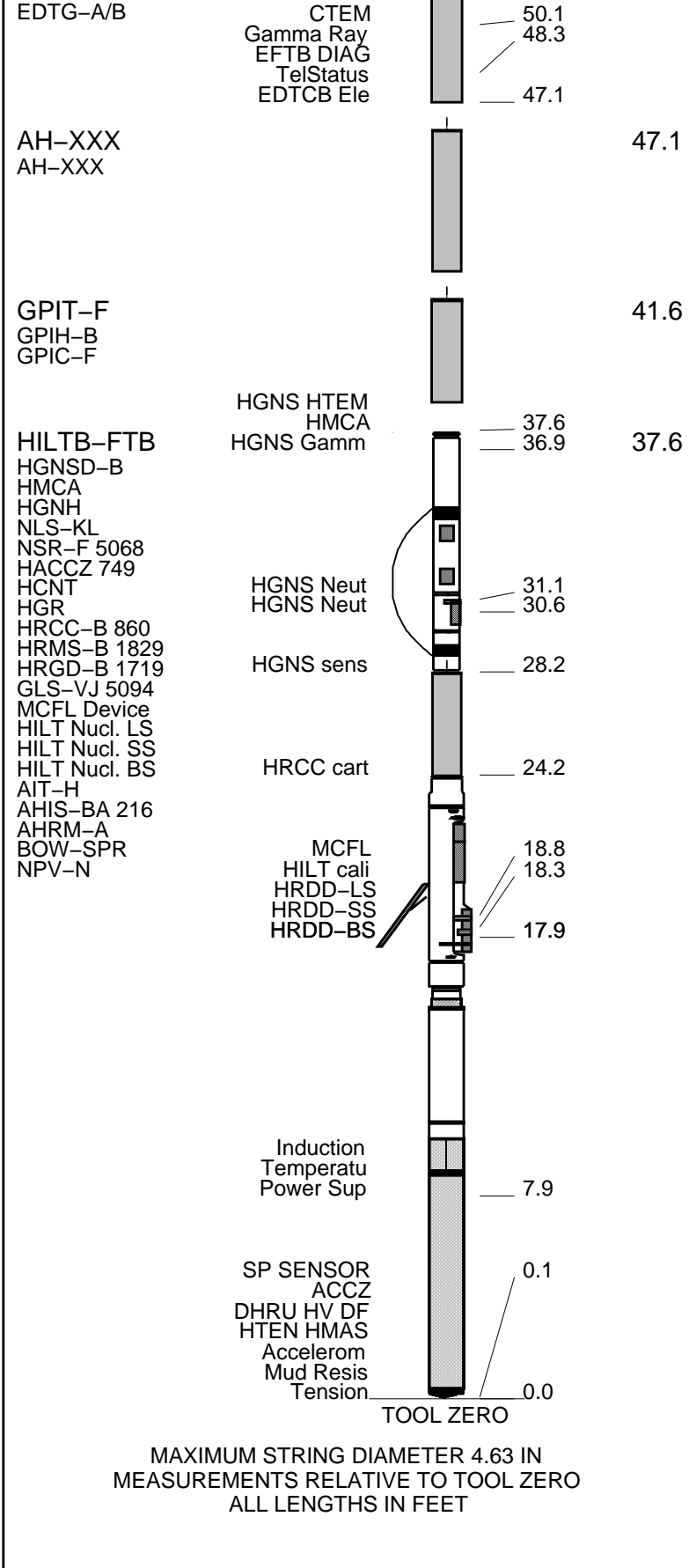
THE USE OF AND RELIANCE UPON THIS RECORDED-DATA BY THE HEREIN NAMED COMPANY (AND ANY OF ITS AFFILIATES, PARTNERS, REPRESENTATIVES, AGENTS, CONSULTANTS AND EMPLOYEES) IS SUBJECT TO THE TERMS AND CONDITIONS AGREED UPON BETWEEN SCHLUMBERGER AND THE COMPANY, INCLUDING: (a) RESTRICTIONS ON USE OF THE RECORDED-DATA; (b) DISCLAIMERS AND WAIVERS OF WARRANTIES AND REPRESENTATIONS REGARDING COMPANY'S USE OF AND RELIANCE UPON THE RECORDED-DATA; AND (c) CUSTOMER'S FULL AND SOLE RESPONSIBILITY FOR ANY INFERENCE DRAWN OR DECISION MADE IN CONNECTION WITH THE USE OF THIS RECORDED-DATA.

REMARKS: RUN NUMBER 1	REMARKS: RUN NUMBER 2
-----------------------	-----------------------

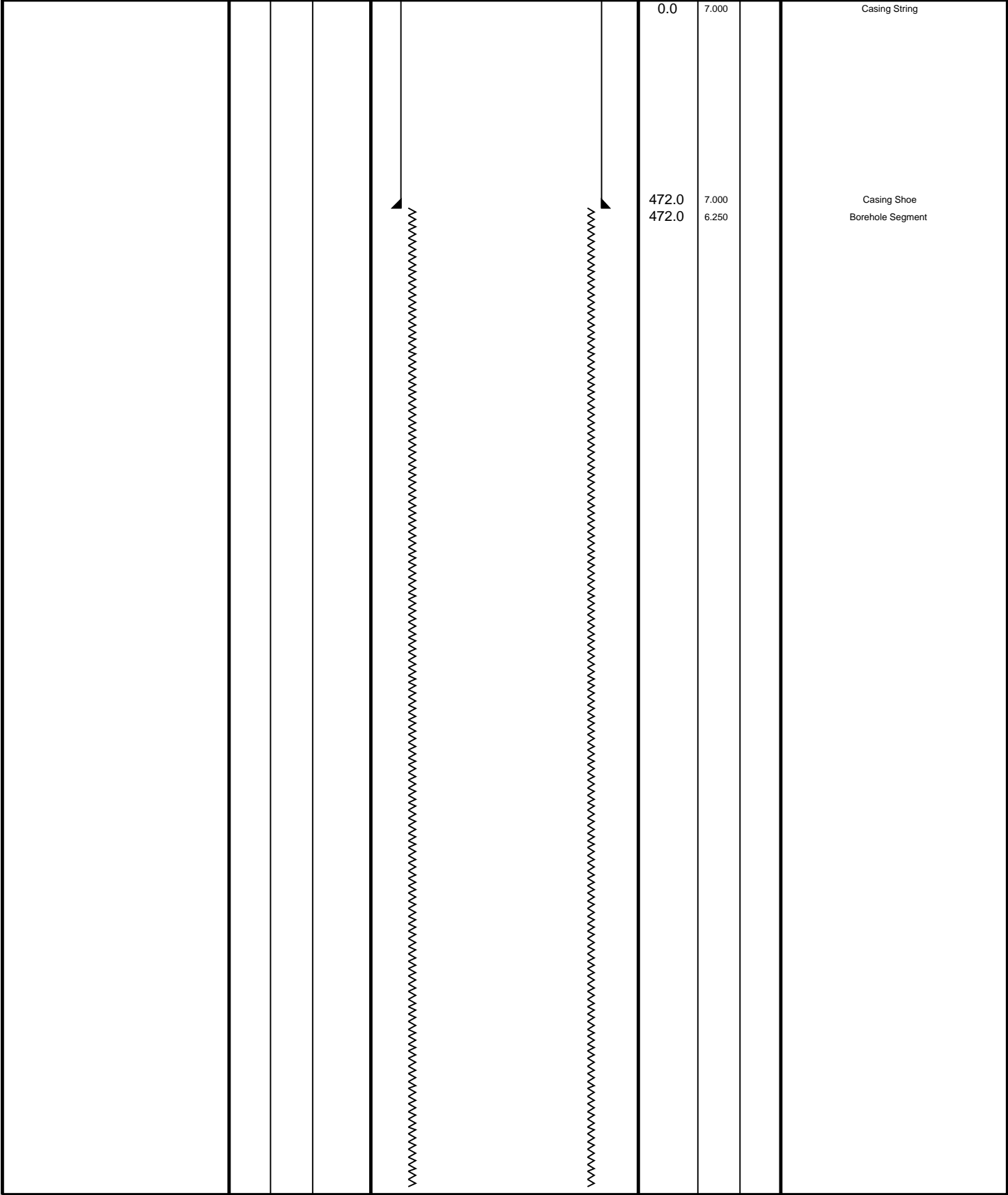
Rig: Exell 2	
Crew: Troy Ocanas	

	EQUIPMENT	DESCRIPTION
RUN 1		RUN 2

DOWNHOLE EQUIPMENT			
LEH-QT			56.6
LEH-QT			
	MDSB_EDTC		
	Mud Tempe		
EDTC-B		53.6	53.6
EDTH-B			
EDTC-B			



Production String	(in)	(ft)	Well Schematic	(ft)	(in)	Casing String
	OD	ID	MD	MD	OD	ID



Input DLIS Files

DEFAULT AIT_TLD_MCFL_CNL_IS_005LUP FN:4 PRODUCER 16-Feb-2012 22:21 2700.0 FT 333.0 FT

Output DLIS Files

DEFAULT AIT_TLD_MCFL_CNL_IS_009PUP FN:8 PRODUCER 17-Feb-2012 00:00 2700.0 FT 333.0 FT

Integrated Hole/Cement Volume Summary

Hole Volume = 526.94 F3
Cement Volume = 280.71 F3 (assuming 4.50 IN casing O.D.)
Computed from 2700.0 FT to 471.0 FT using data channel(s) HCAL

OP System Version: 18C0-147

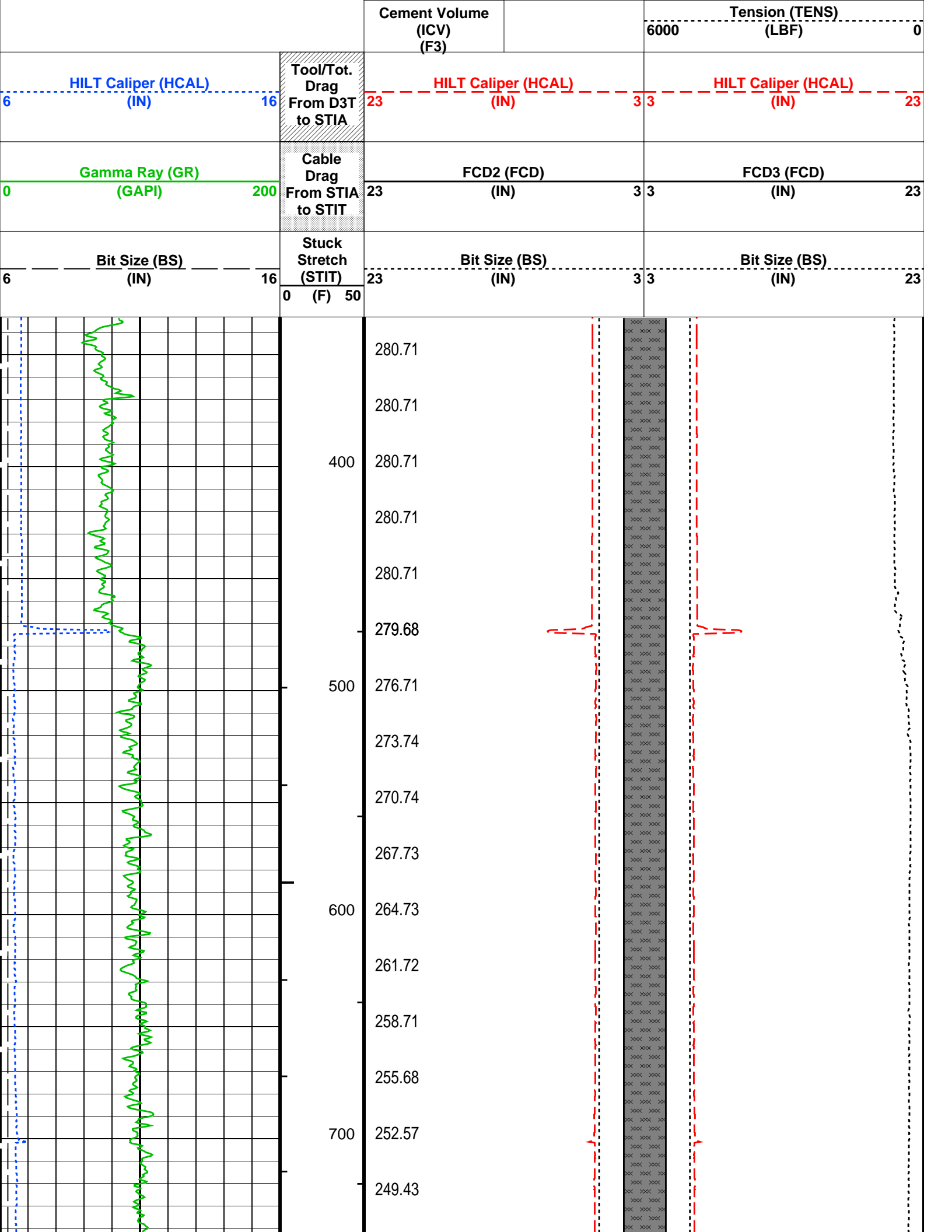
HILTB-FTB 18C0-147 GPIT-F SRPC-4072-Q4_2010_OP18
EDTC-B SRPC-4072-Q4_2010_OP18

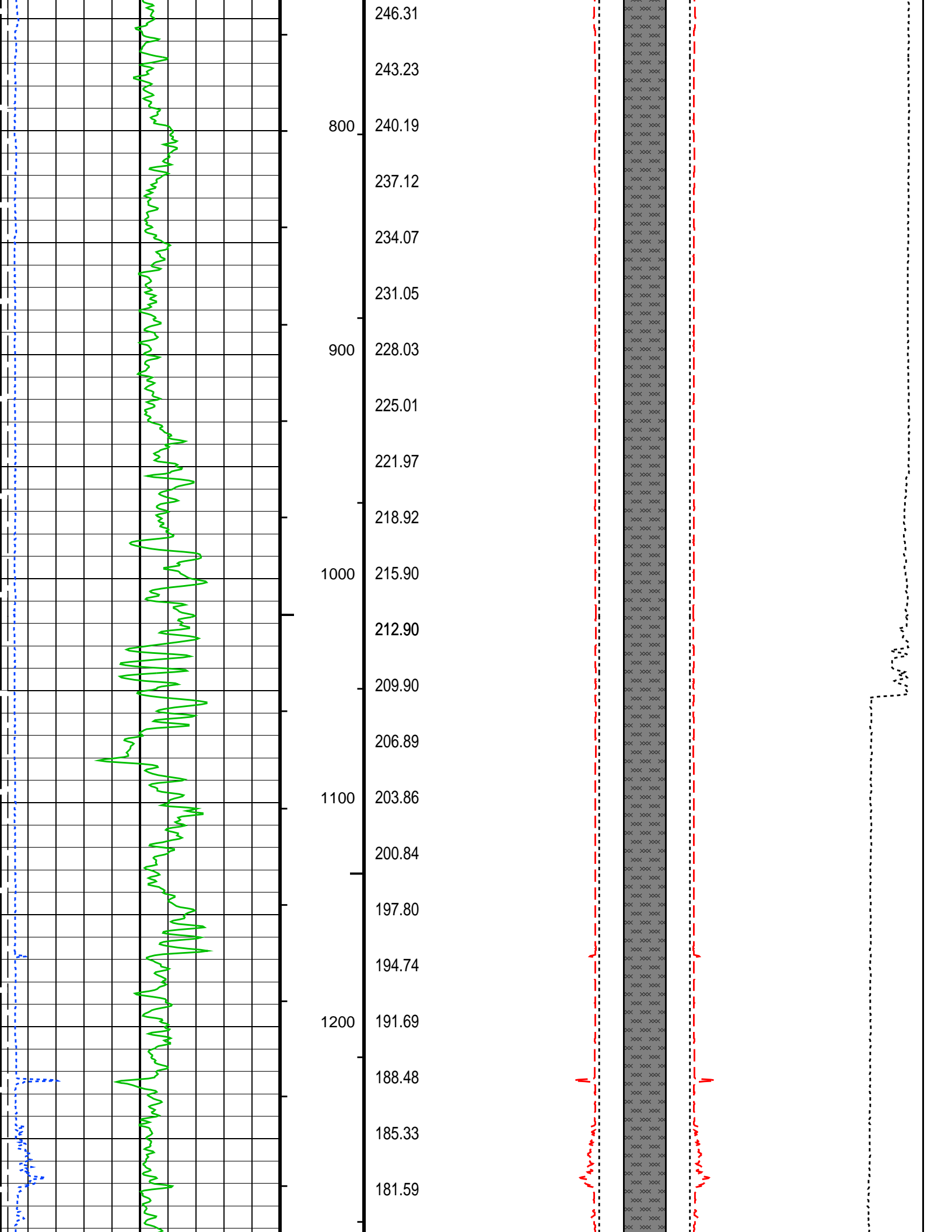
PIP SUMMARY

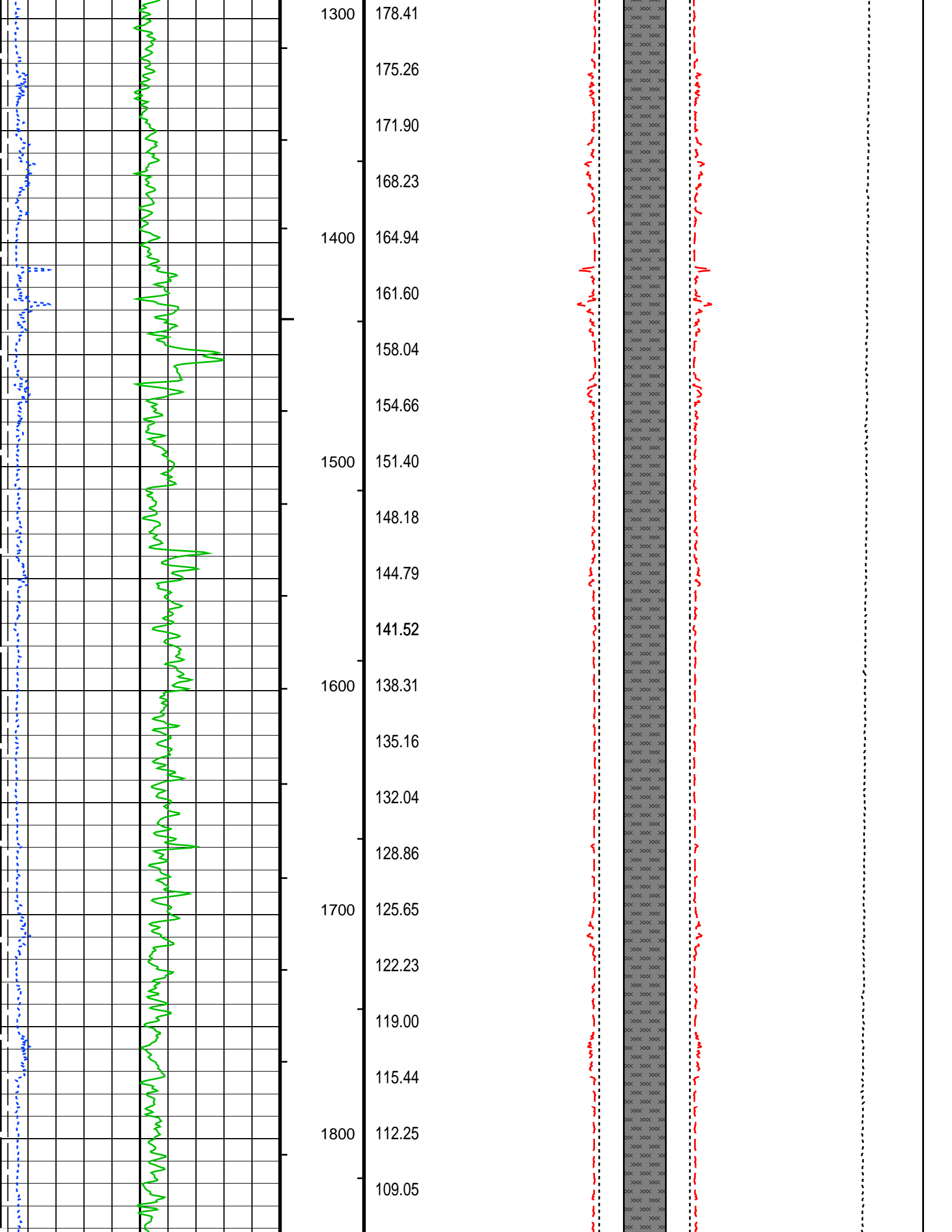
- └ Integrated Hole Volume Minor Pip Every 10 F3
- └ Integrated Hole Volume Major Pip Every 100 F3
 - └ Integrated Cement Volume Minor Pip Every 10 F3
 - └ Integrated Cement Volume Major Pip Every 100 F3

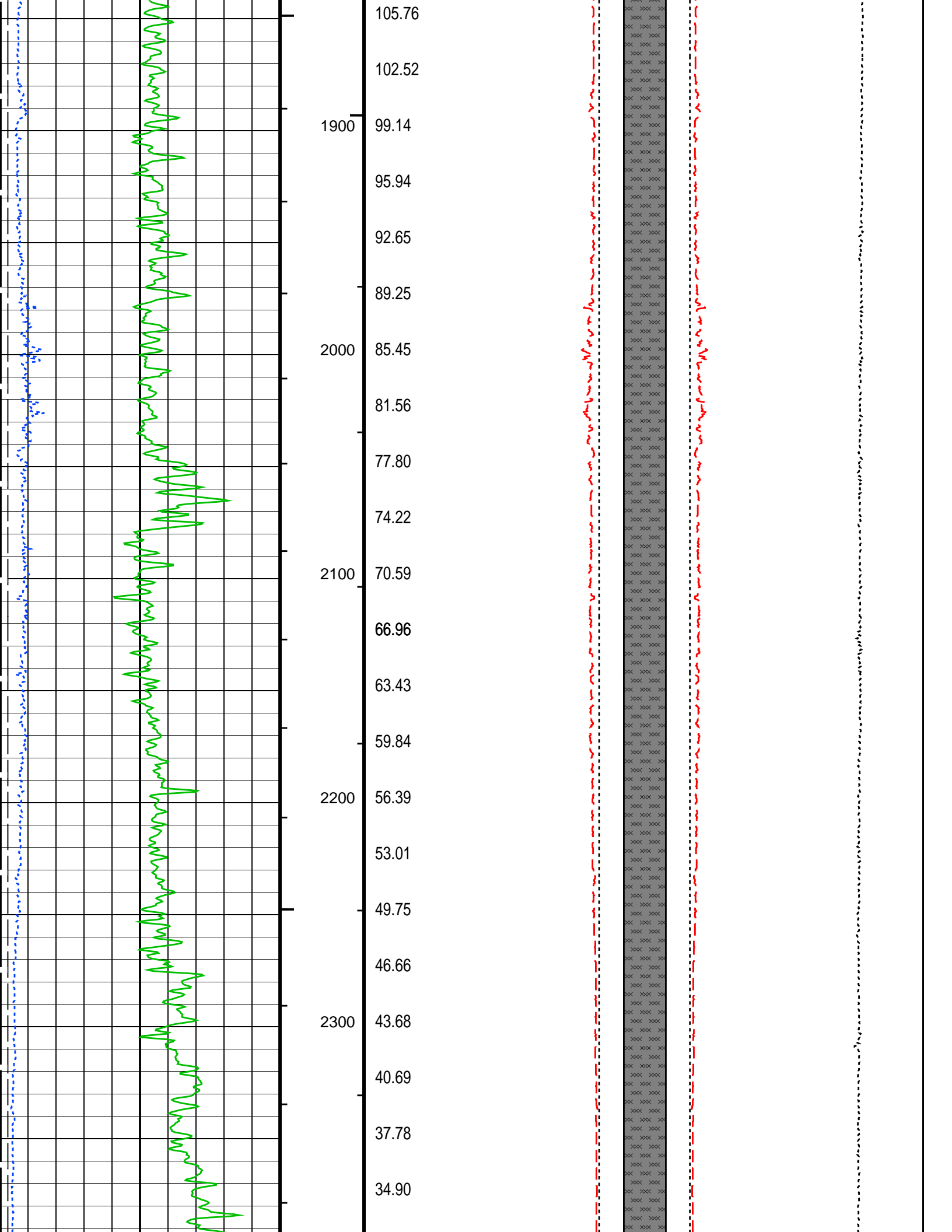
Time Mark Every 60 S

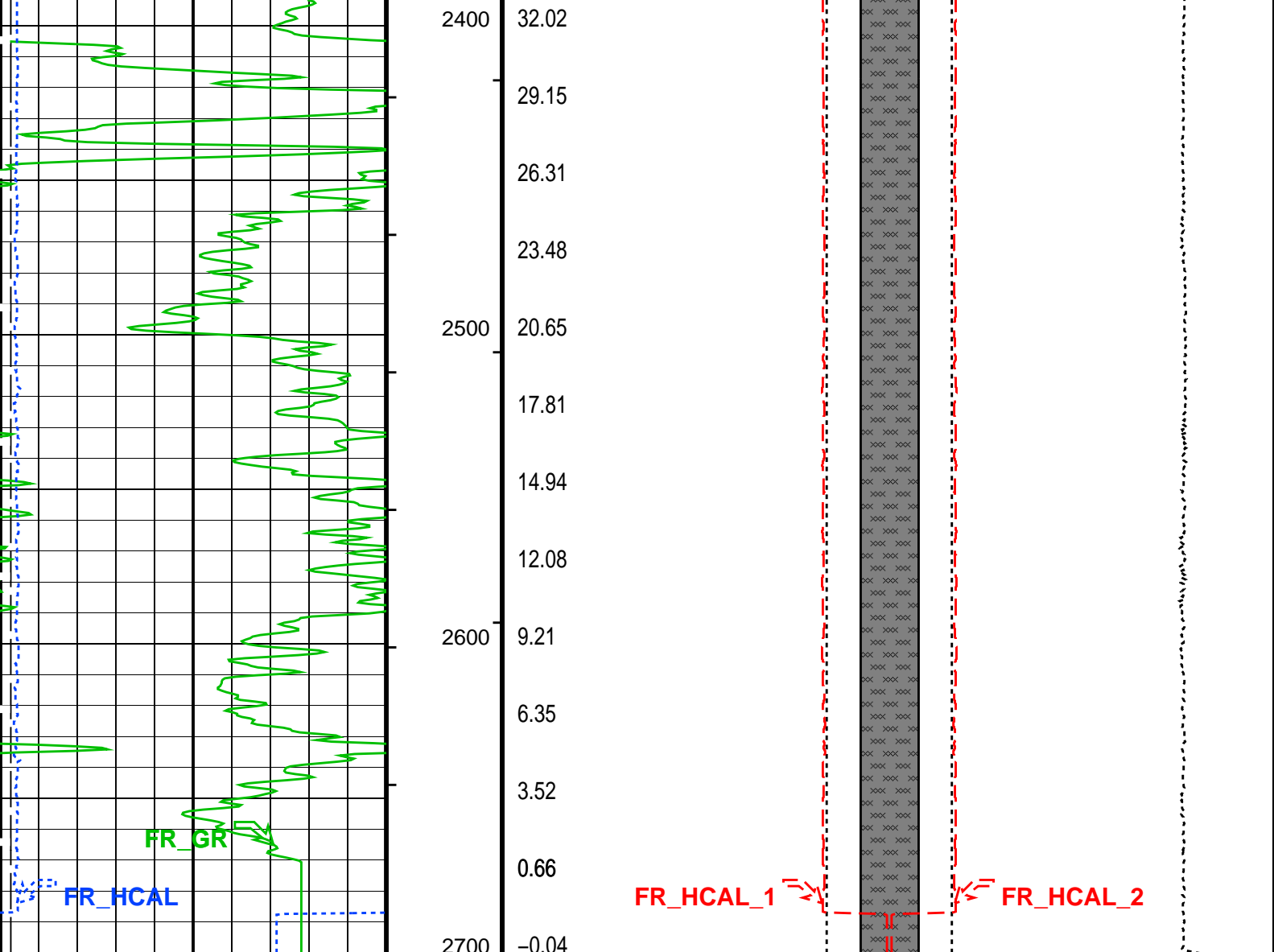
FCD2 - FCD3
From FCD2 to FCD3











Bit Size (BS) (IN)		Stuck Stretch (STIT) 0 (F) 50	Bit Size (BS) (IN)		Bit Size (BS) (IN)	
6	16		23	3 3	23	
Gamma Ray (GR) (GAPI)		Cable Drag From STIA to STIT	FCD2 (FCD) (IN)		FCD3 (FCD) (IN)	
0	200		23	3 3	23	
HILT Caliper (HCAL) (IN)		Tool/Tot. Drag From D3T to STIA	HILT Caliper (HCAL) (IN)		HILT Caliper (HCAL) (IN)	
6	16		23	3 3	23	
			Cement Volume (ICV) (F3)	Tension (TENS) (LBF)		
				6000	0	
			FCD2 – FCD3 From FCD2 to FCD3			

PIP SUMMARY

- Integrated Hole Volume Minor Pip Every 10 F3
- Integrated Hole Volume Major Pip Every 100 F3
- Integrated Cement Volume Minor Pip Every 10 F3
- Integrated Cement Volume Major Pip Every 100 F3

Time Mark Every 60 S

Parameters		
PLUS Name	Description	Value

DLIS Name	Description	Value
	HOLEV: Integrated Hole/Cement Volume	
FCD	Future Casing (Outer) Diameter	4.5 IN
HVCS	Integrated Hole Volume Caliper Selection	AUTOMATIC
	STI: Stuck Tool Indicator	
LBFR	Trigger for MAXIS First Reading Label	TDL
STKT	STI Stuck Threshold	2.5 FT
TDD	Total Depth – Driller	2702.00 FT
TDL	Total Depth – Logger	2702.00 FT
	DIR: Directional Survey Computation	
SPVD	TVD of Starting Point	2699.18 FT
TIMD	Along-hole depth of Tie-in Point	472 FT
TIVD	TVD of Tie-in Point	472 FT
	System and Miscellaneous	
BS	Bit Size	6.250 IN
DO	Depth Offset for Playback	0.0 FT
PP	Playback Processing	NORMAL
TD	Total Depth	2702 FT

Format: G_DCAL_FORMAT Vertical Scale: 2" per 100' Graphics File Created: 17-Feb-2012 00:00

OP System Version: 18C0-147

HILTB-FTB	18C0-147	GPIT-F	SRPC-4072-Q4_2010_OP18
EDTC-B	SRPC-4072-Q4_2010_OP18		

Input DLIS Files

DEFAULT	AIT_TLD_MCFL_CNL_IS_005LUP	FN:4	PRODUCER	16-Feb-2012 22:21	2700.0 FT	333.0 FT
---------	----------------------------	------	----------	-------------------	-----------	----------

Output DLIS Files

DEFAULT	AIT_TLD_MCFL_CNL_IS_009PUP	FN:8	PRODUCER	17-Feb-2012 00:00
---------	----------------------------	------	----------	-------------------

Company: **OMIMEX PETROLEUM INC.**

Schlumberger

Well: **Bledsoe 9-1-5-45**

Field: **Ballyneal**

County: **Yuma**

State: **Colorado**

PEX AIT GPIT BHC
Caliper Log
Cement Volume